



## Phanteks PH-HRLCD BK01 Hi-Res Display User Manual

[Home](#) » [PHANTEKS](#) » Phanteks PH-HRLCD BK01 Hi-Res Display User Manual 

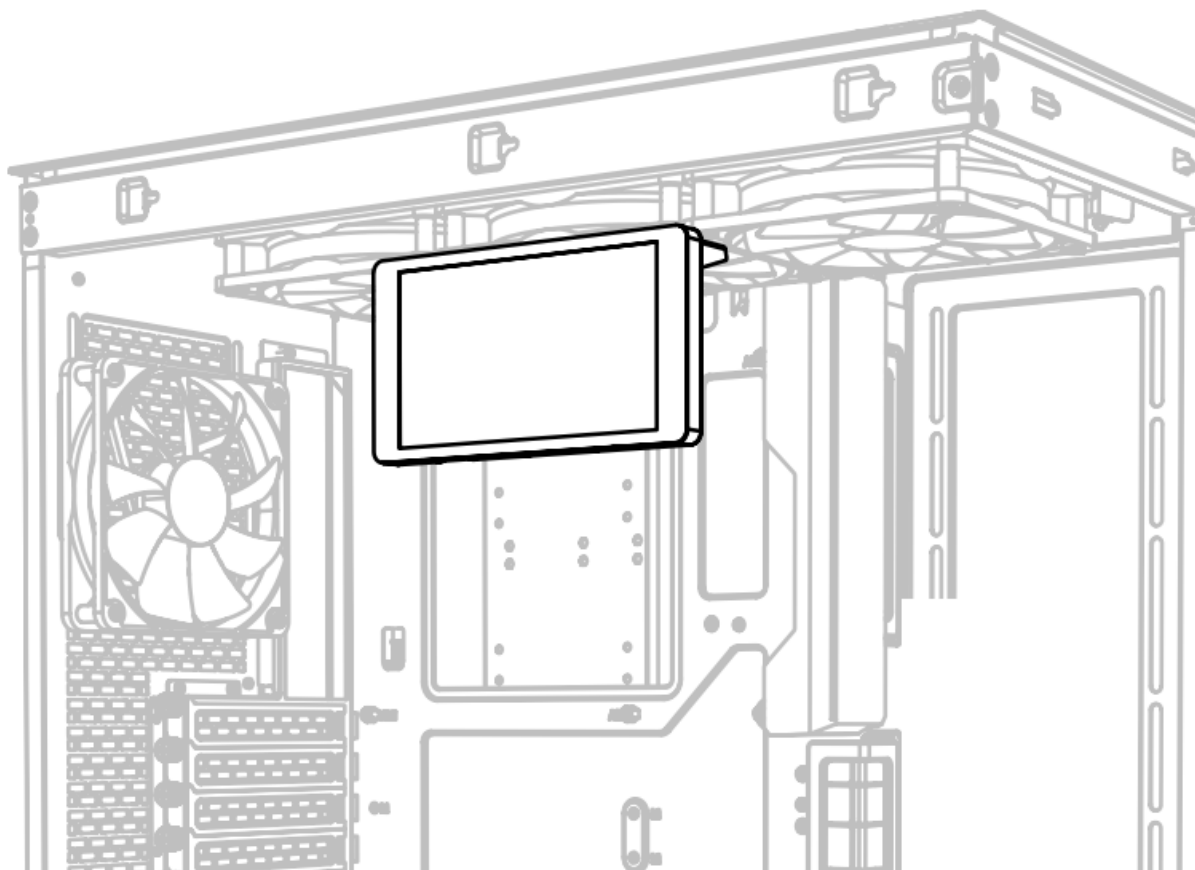
# **PHANTEKS**

PH-HRLCD BK01 Hi-Res Display  
User Manual

### Contents

- [1 PH-HRLCD BK01 Hi-Res Display](#)
- [2 Legenda](#)
- [3 SCOPE OF DELIVERY](#)
- [4 CABLES INSTALLATION](#)
- [5 MOUNTING OPTIONS](#)
- [6 SETTING UP THE HI-RES DISPLAY](#)
- [7 DISPLAY SHOWS BLACK SCREEN](#)
- [8 SAFETY INFORMATION](#)
- [9 Documents / Resources](#)
  - [9.1 References](#)

### PH-HRLCD BK01 Hi-Res Display



**INSTALLATION GUIDE**  
**5.5 "HI- RES DISPLAY**





Online Manual

<https://phanteks.com/55-hires-display/>

THIS MANUAL IS FOR THE FOLLOWING MODELS

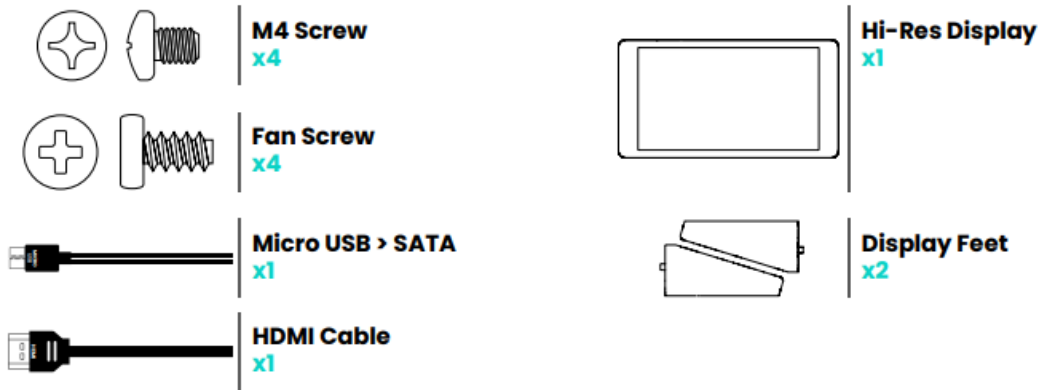
PH-HRLCD_BK01 PH-HRLCD_WT01	5.5" Hi-Res Display 5.5" Hi-Res Display	Black White
--------------------------------	--	----------------

**Legenda**

 Remove  
 Install

Phanteks will not take responsibility for any damages incurred due to incorrect installation or usage of this product.

**SCOPE OF DELIVERY**



## CABLES INSTALLATION

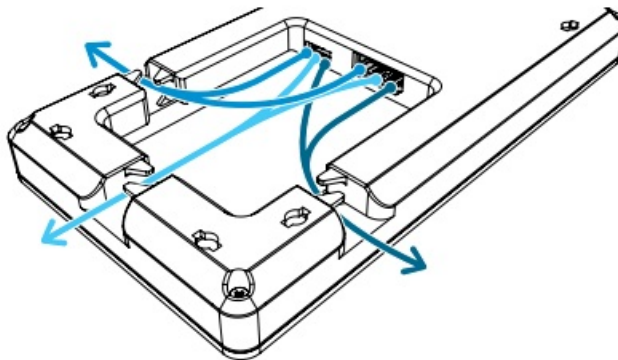
Connect HDMI for the display



Connect SATA to power the display

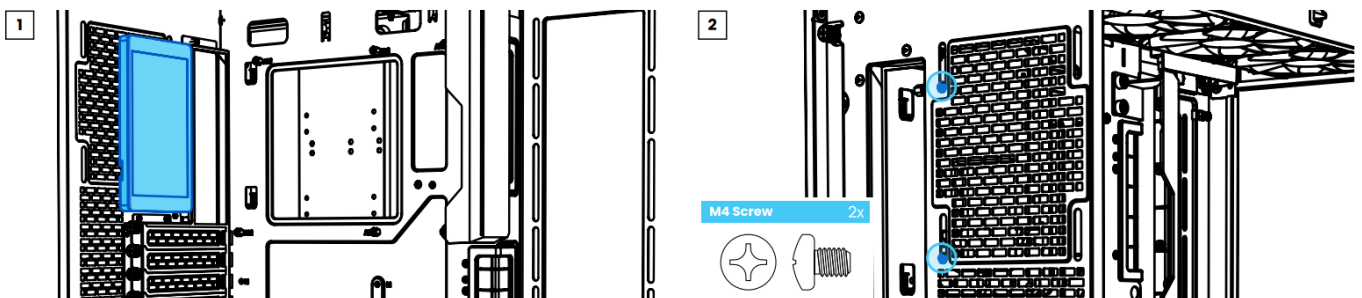


## CABLE ROUTING

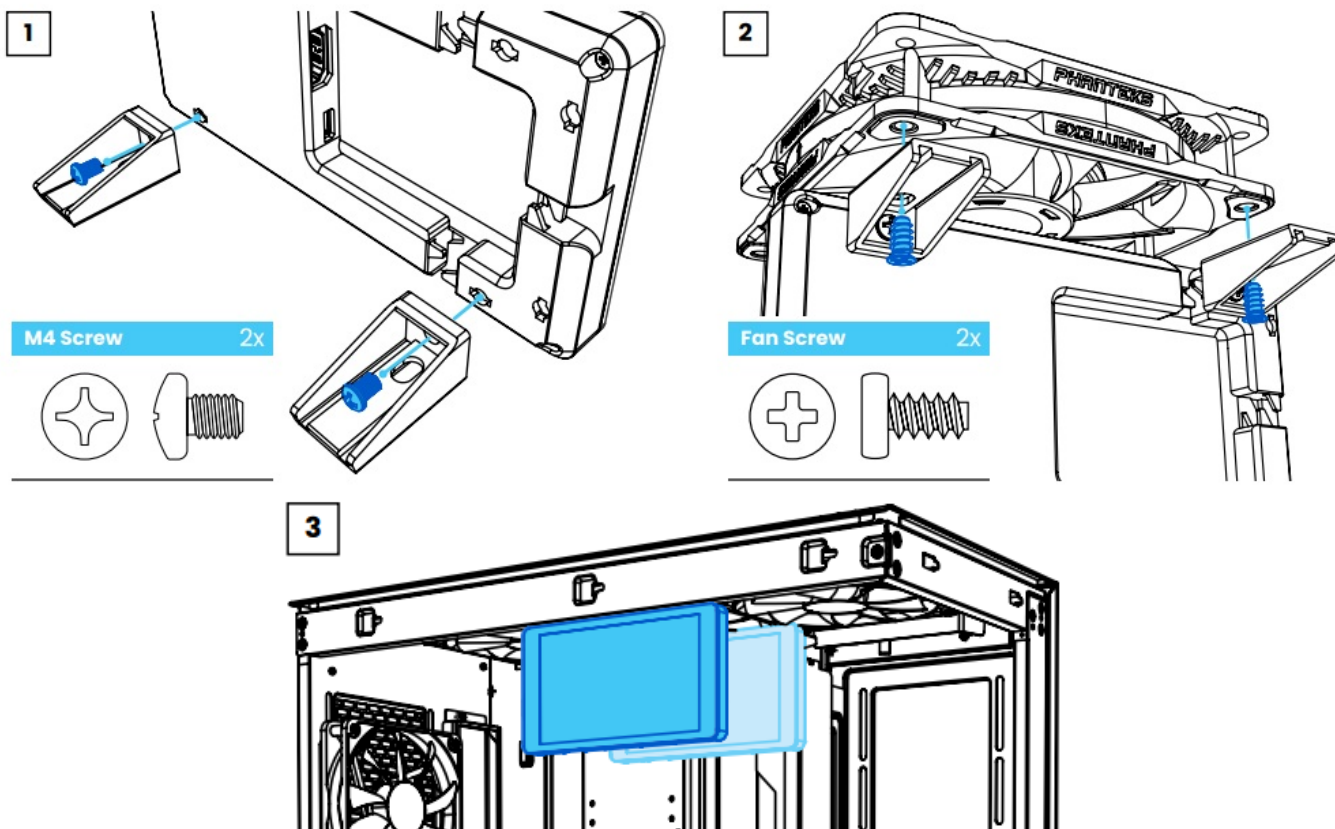


## MOUNTING OPTIONS

### A CHASSIS 120mm FAN LOCATION



## B 120mm FAN

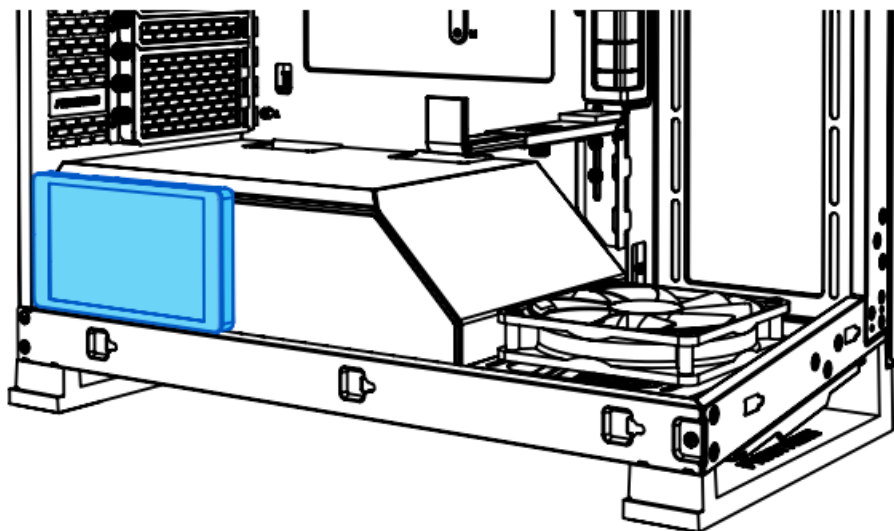


### ⚠ CAUTION

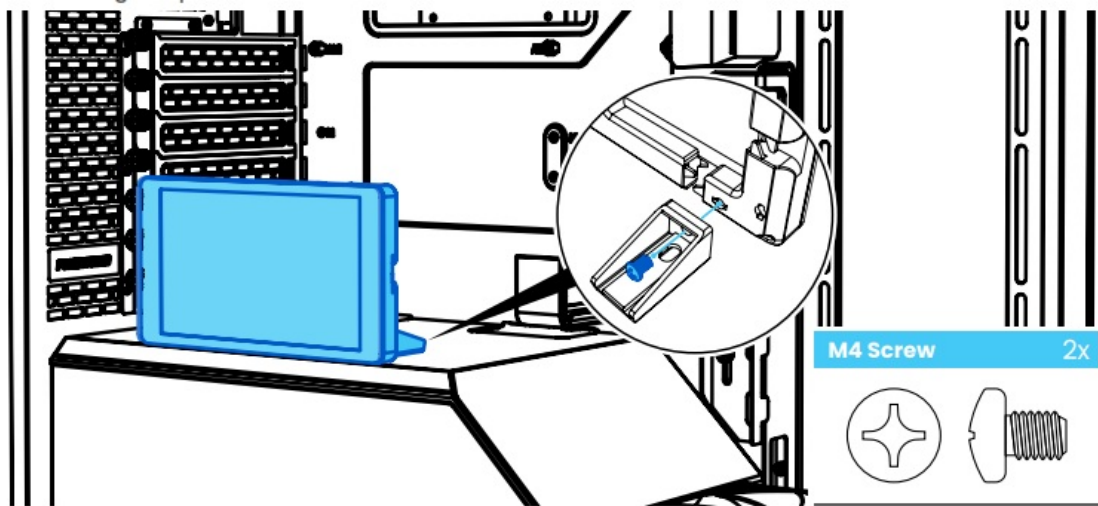
Requires 16 mm clearance between the fan and the glass panel.

**VORSICHT**

**C FLAT SURFACE MAGNETS**



**D VERTICAL WITH MAGNETIC FEET**

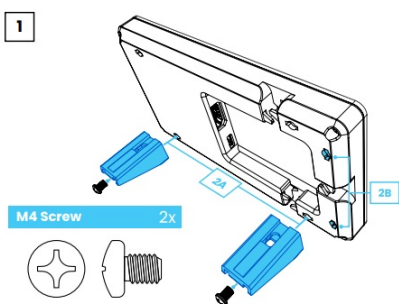


### OPTIONALLY

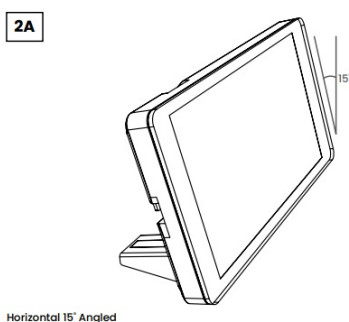
Use your own Micro USB (5V) and HDMI cable when placed externally.

### E EXTERNAL DESK PLACEMENT

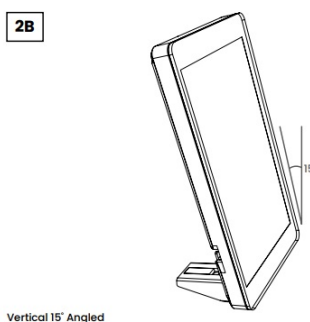
1



2A



2B



## SETTING UP THE HI-RES DISPLAY

### SET THE ORIENTATION

1. Go to: START > SETTINGS > SYSTEM > DISPLAY
2. Set the Display Orientation to 'Landscape' or 'Portrait'.

### SET THE RESOLUTION

1. Go to: START > SETTINGS > SYSTEM > DISPLAY
2. Set the Display Resolution to its native 2560 x 1440 pixels.

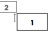
### OPTIONAL | SET THE SCREEN TO EXTEND

1. Go to: START > SETTINGS > SYSTEM > DISPLAY
2. Set the second display to 'Extend'.

### OPTIONAL | HIDE THE TASKBAR ON SECOND SCREEN

1. Go to: START > SETTINGS > PERSONALISATION > TASKBAR
2. Turn 'OFF' Show Taskbar On All Displays, this shows only the taskbar on Display 1.

## **OPTIONAL | PREVENT CURSOR MOVING TO SECOND SCREEN**

1. Go to: START > SETTINGS > SYSTEM > DISPLAY
2. Position the Hi-Res Display diagonally of the main display. The cursor can't move easily to the Hires Display, although it still is accessible if needed. 

## **DISPLAY SHOWS BLACK SCREEN**

### **TROUBLESHOOT VIA BIOS | DISABLE ERP**

1. Go to the BIOS screen of your system.
2. Enter the 'Advanced Mode' for the BIOS.
3. Search for a setting with the label 'ErP'.

Unfortunately the location of this setting is different per mainboard manufacturer. Please check the mainboard manual where this option is located.

### **TROUBLESHOOT VIA WINDOWS | ENABLE USB POWER**

1. Navigate to the Control Panel and select 'Power Options'.
2. Select 'Change Plan Settings' from the selected Power Plan.
3. Select 'Change Advanced Power Settings'.
4. Open 'USB Settings'.
5. Open 'USB Selective Suspend Setting'.
6. Change the 'Setting' to Enabled.
7. Press Apply in the bottom right corner to apply the new settings.

### **TROUBLESHOOT VIA WINDOWS | TURN OFF FAST-STARTUP**

1. Navigate to the Control Panel and select 'Power Options'.
2. Choose 'Choose what the power buttons do'.
3. Click on 'Change settings that are currently unavailable'.
4. Under 'Shutdown settings' uncheck the 'Turn on fast startup' box.

Disabling Fast Startup may result in slightly longer boot times. However, the impact is usually negligible on modern systems with fast solid-state drives (SSDs).

## **SAFETY INFORMATION**

In order to achieve maximum safety, we suggest that you adopt the following guidelines:

1. Place the product on a clean and stable surface that allows adequate air ventilation.
2. Don't use or place the product and any of its components near water, moisture, or other wet surfaces; or place the product near any heat, open flame, or other hot surfaces such as radiators, stoves, fireplaces, and candles.
3. Use caution when operating the desktop PC to avoid electrical shock or damage, such as unplugging the power supply during thunderstorms, ensuring that your hands are dry before using (and handling) the desktop PC, keeping it away from any source of liquid and/or heat source, and using all other reasonable precautions

needed under the circumstances.

4. When connecting external devices to your desktop PC, carefully plan how the wires will be placed. Protect any connected cables from being trod on or pinched, particularly at plugs, convenience receptacles, or the point where they exit from.
5. Take extra caution when handling/removing/reattaching glass components. Once removed, place the glass component on a stable surface first before proceeding.
6. When unplugging any connected devices and/or cables, always pull the cable or device's plug or connector. Don't forcefully tug on its cord.
7. Don't place any heavy items on top of the product.
8. Make sure that the desktop PC is off, unplugged from the outlet, and that all connected devices are powered off and unplugged (if any) before installing or uninstalling any internal component to and/or from the desktop PC or product.

## NOTE ON DISPOSAL

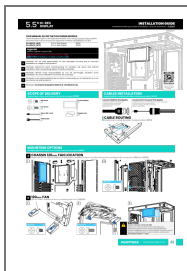


■ The WEEE symbol indicates that this product must not be disposed of with normal household waste. Through the correct disposal of this product, you will help protect the environment. For more information on the disposal of this product, please contact your local municipality, your waste disposal service or the shop where you purchased the product.

Phanteks Taiwan Inc. 11F., No. 150, Jian 1st Rd., Zhonghe Dist. New Taipei City 235	Importer EU Aperta Int. B.V. (EU) Sydneystraat 33 3047 BP Rotterdam The Netherlands	Importer US Axpertec Inc. (US) 20465 E Walnut Dr. N City of Industry, CA 91789 USA
--	---	--

**PHANTEKS**  
[www.phanteks.com](http://www.phanteks.com)

## Documents / Resources



[Phanteks PH-HRLCD BK01 Hi-Res Display \[pdf\] User Manual](#)  
PH-HRLCD BK01 Hi-Res Display, PH-HRLCD BK01, Hi-Res Display, Display

## References

-  [Phanteks Innovative Computer Hardware Design](#)
- [User Manual](#)

[Manuals+](#), [Privacy Policy](#)

This website is an independent publication and is neither affiliated with nor endorsed by any of the trademark owners. The "Bluetooth®" word mark and logos are registered trademarks owned by Bluetooth SIG, Inc. The "Wi-Fi®" word mark and logos are registered trademarks owned by the Wi-Fi Alliance. Any use of these marks on this website does not imply any affiliation with or endorsement.