



PETZL MGO OPEN 60 Auto-Locking Directional Connector Instruction Manual

[Home](#) » [PETZL](#) » PETZL MGO OPEN 60 Auto-Locking Directional Connector Instruction Manual 



3 year guarantee



MGO OPEN 60

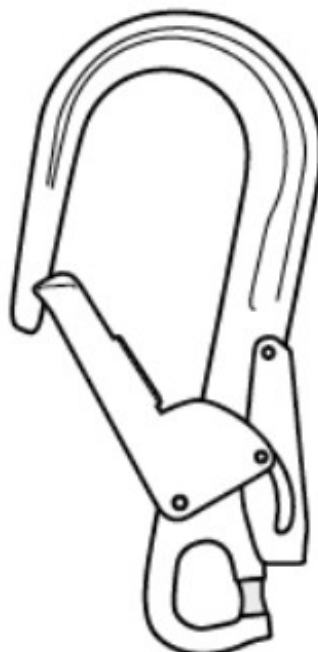


EN 362: 2004



TPTC 019/2011

Gated directional connector



Contents

- 1 MGO OPEN 60 Auto-Locking Directional Connector
- 2 Field of application
- 3 Nomenclature
- 4 Inspection, points to verify
- 5 Compatibility
- 6 Mounting
- 7 Carabiner positioning
- 8 Additional Information
- 9 Documents / Resources
 - 9.1 References
- 10 Related Posts

MGO OPEN 60 Auto-Locking Directional Connector

WARNING

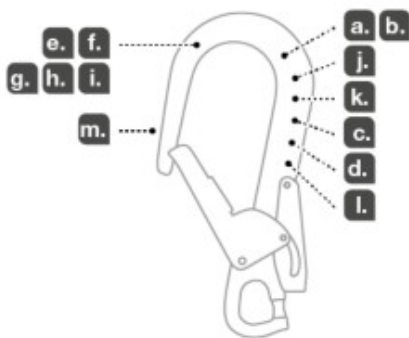
Activities involving the use of this equipment are inherently dangerous. You are responsible for your own actions and decisions. Before using this equipment, you must:

- Read and understand all Instructions for Use.
- Get specific training in its proper use.
- Become acquainted with its capabilities and limitations.
- Understand and accept the risks involved.



FAILURE TO HEED ANY OF THESE WARNINGS MAY RESULT IN SEVERE INJURY OR DEATH.

Traceability and markings





Latest version



Other languages



Technical tips



PPE checking

Warning symbols



(1)



(2)



(3)



(4)

PETZL
FR-38920 Crolles Cidex 105A
PETZL.COM
ISO 9001 © Petzl



Sustaining our Community
FONDATION-PETZL.ORG

This product is compliant with the Regulation 2016/425 on Personal Protective Equipment as brought into UK law and amended.

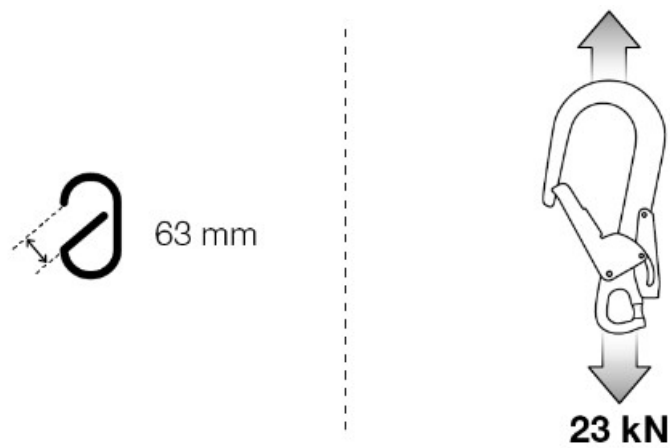
Approved body performing the UKCA type examination and the production control of this PPE :

SGS United Kingdom Ltd
Inward Way Ross more Business Park
Ellesmere Port, Cheshire, CH65 3EN
United Kingdom
N° 0120

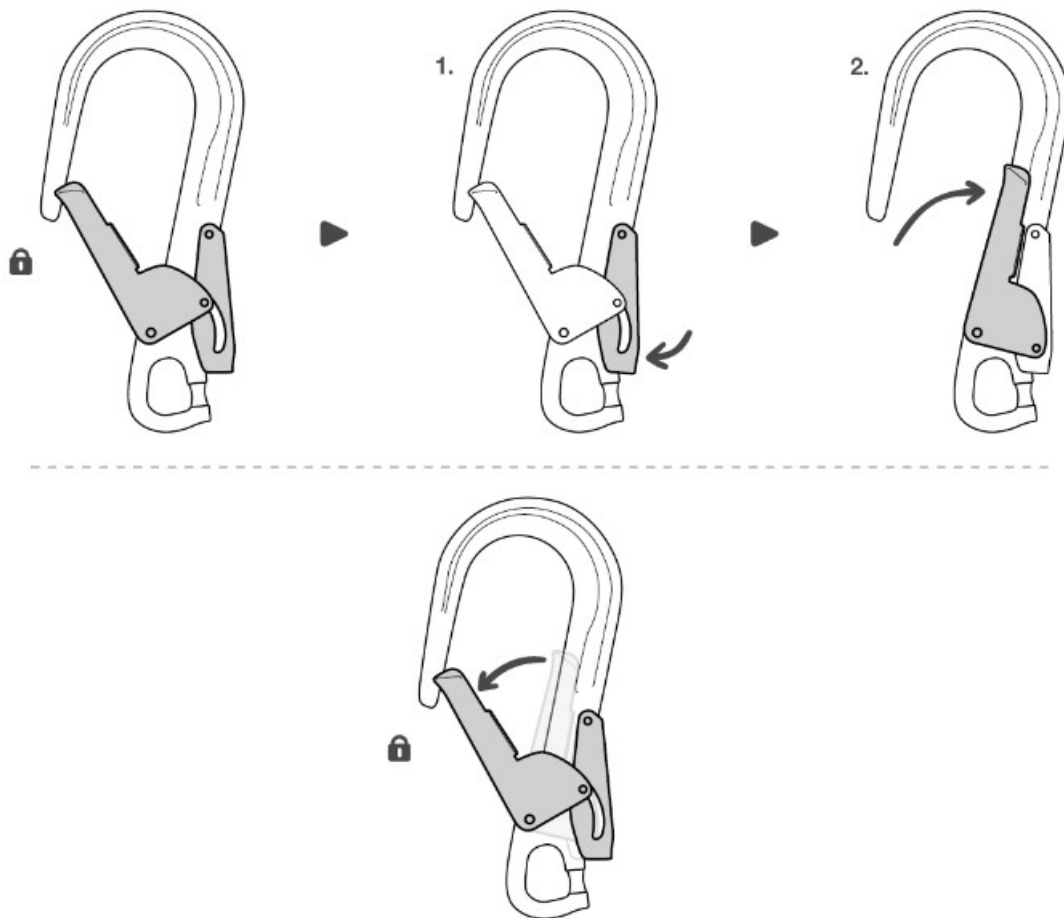
Authorized Representative in UK : PETZL UK Agency, Unit 3-7, Tebay Business Park, Old Tebay, Penrith, CA10 3SS, United Kingdom

These instructions explain how to correctly use your equipment. Only certain techniques and uses are described. The warning symbols inform you of some potential dangers related to the use of your equipment, but it is impossible to describe them all. Check Petzl.com for updates and additional information. You are responsible for heeding each warning and using your equipment correctly. Any misuse of this equipment will create additional dangers. Contact Petzl if you have any doubts or difficulty understanding these instructions.

Field of application



Opening/closing



Personal protective equipment (PPE) used for fall protection from height. EN 362: 2004 connector – classes A/T (anchor/manufactured termination). Auto-locking carabiner designed for activities with a risk of falls from height. This product must not be pushed beyond its limits, nor be used for any purpose other than that for which it is designed.

Responsibility

WARNING Activities involving the use of this equipment are inherently dangerous. You are responsible for your own actions, decisions and safety.

Before using this equipment, you must:

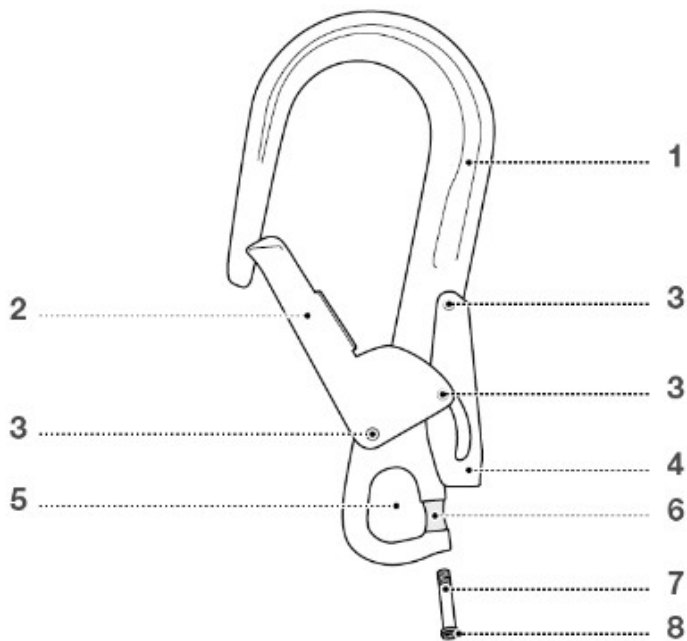
- Read and understand all Instructions for Use.
- Get specific training in its proper use.

- Become acquainted with its capabilities and limitations.
- Understand and accept the risks involved.

Failure to heed any of these warnings may result in severe injury or death.

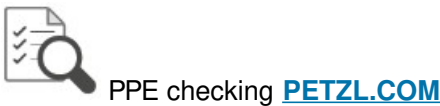
This product must only be used by competent and responsible persons, or those placed under the direct and visual control of a competent and responsible person. You are responsible for your actions, your decisions and your safety and you assume the consequences of same. If you are not able, or not in a position to assume this responsibility, or if you do not fully understand the Instructions for Use, do not use this equipment.

Nomenclature



| | |
|--|---|
| (1) Frame, (2) Gate, (3) Rivets, (4) Unlocking lever, | (5) Gated attachment hole, (6) Spacer, (7) Screw, (8) O-ring. Principal materials: aluminum. |
|--|---|

Inspection, points to verify



PPE checking [PETZL.COM](https://www.petzl.com)



Your safety depends upon the integrity of your equipment. Petzl recommends a detailed inspection by a

competent person at least once every 12 months (depending on current regulations in your country, and your conditions of usage).

WARNING: your intensity of use may cause you to inspect your PPE more frequently. Follow the procedures described at [Petzl.com](https://www.petzl.com). Record the results on your PPE inspection form: type, model, manufacturer contact info, serial number or individual number, dates: manufacture, purchase, first use, next periodic inspection; problems, comments, inspector's name and signature.

Before each use

Verify there are no cracks, deformation or corrosion (on the frame, rivets, gate, unlocking lever, spacer, screw and threads). Verify that the gate opens, and that it closes automatically and completely.

Make sure the screw is securely tightened (correct installation, lack of play...).

During use

Verify that the carabiner is always loaded on the major axis. Verify that the carabiner moves freely in the anchor to avoid any jamming. Avoid any pressure or rubbing that could unlock the gate or damage the gate and the unlocking lever.

It is important to regularly monitor the condition of the product and its connections to the other equipment in the system. Make sure that all items of equipment are correctly positioned with respect to each other.

Compatibility

Verify that this product is compatible with the other elements of the system in your application (compatible = good functional interaction). Equipment used with your connector must meet current standards in your country (e.g. EN 355 energy absorber).

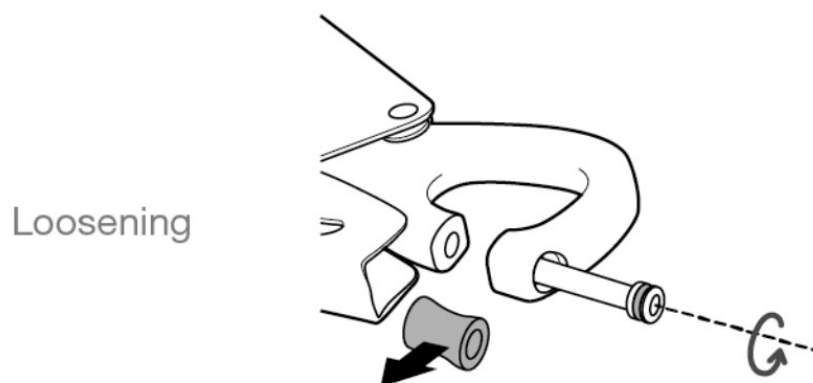
Mounting

Carry out the mounting in a suitable location to avoid losing the spacer or screw. Make sure the O-ring is present on the screw. This O-ring helps prevent the screw from loosening in the event it is not properly tightened. If the O-ring is missing, contact Petzl after-sales service.

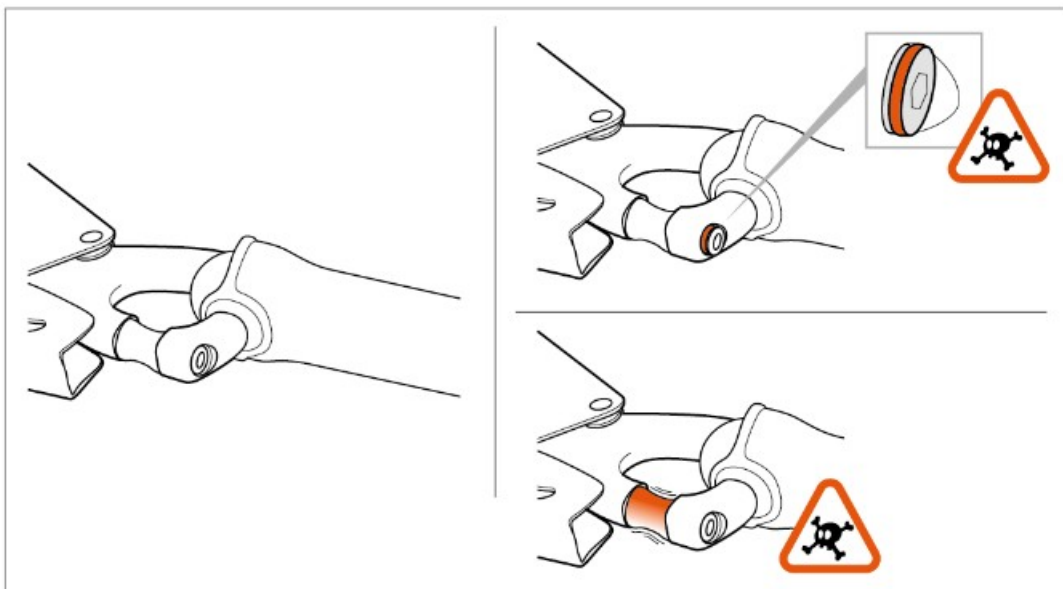
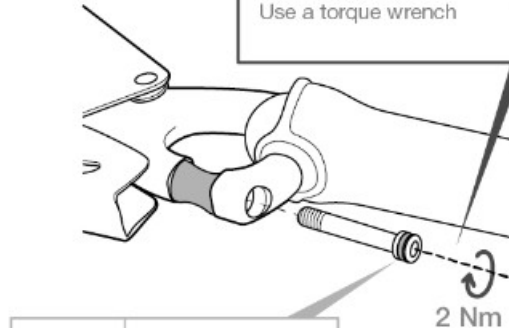
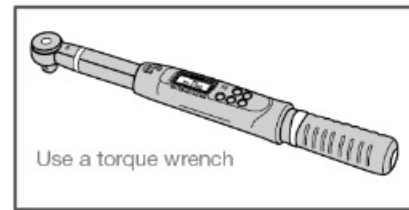
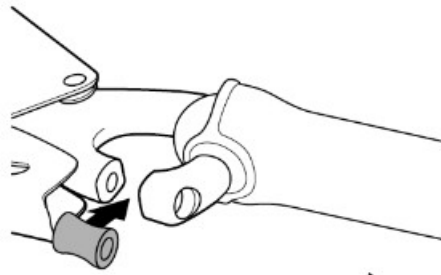
To ensure proper performance of your device, the screw must be correctly installed and tightened to the indicated torque. Using a torque wrench is the only way to verify that the tightening torque is correct.

Verify there is no play in the spacer. The gated attachment hole is secure only if the spacer is closed and the screw completely tightened. Loading the MGO OPEN in any other way (e.g. with the screw poorly tightened) is dangerous and can reduce its strength.

The gated attachment hole of the MGO OPEN should only be used for semi-permanent installation (no frequent connection/disconnection).



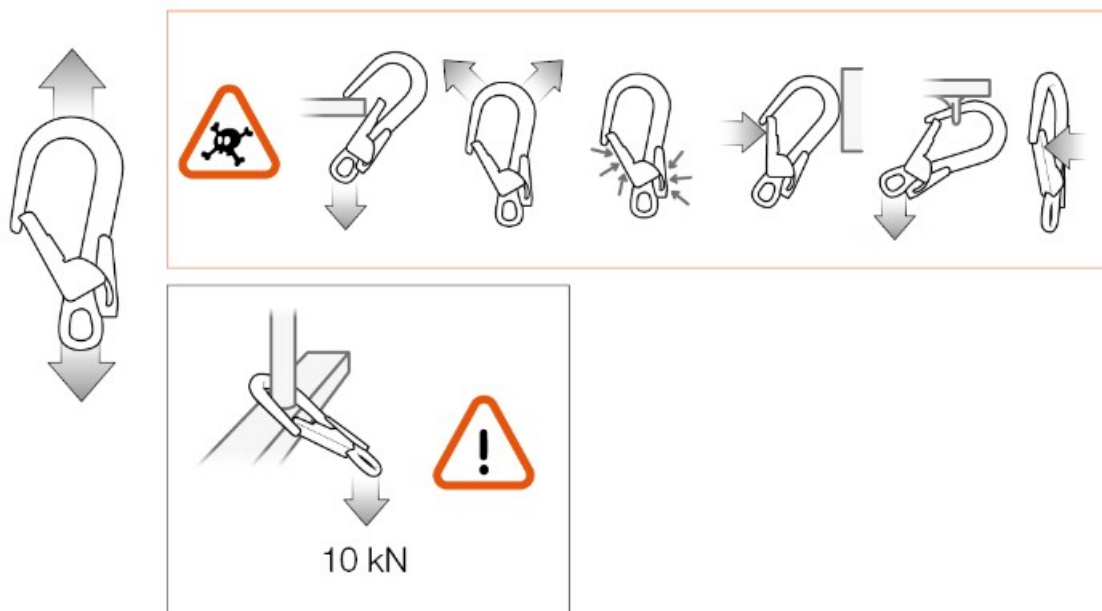
Tightening



Carabiner positioning

A carabiner is not indestructible.

A carabiner is strongest when loaded on the major axis, with the gate closed. Loading a carabiner in any other way (e.g. cantilever loading) is dangerous and reduces its strength.



Additional Information

A. Lifetime



B. Acceptable T°



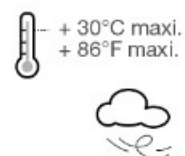
C. Precautions for use



D. Cleaning



E. Drying



F. Storage - Transport



G. Maintenance



H. Modifications - Repairs



I. FAQ - Contact



This product meets the requirements of Regulation (EU) 2016/425 on personal protective equipment. The EU declaration of conformity is available at [Petzl.com](https://www.petzl.com).

- In a fall-arrest system, the length of the connector affects the fall distance.
- You must have a rescue plan and the means to rapidly implement it in case of difficulties encountered while using this equipment.
- The anchor point for the system should preferably be located above the user's position and should meet the requirements of the EN 795 standard (12 kN minimum strength).
- In a fall-arrest system, it is essential to check the required clearance below the user before each use, in order to avoid hitting the ground or an obstacle in case of a fall.
- Make sure that the anchor point is correctly positioned, in order to limit the risk and the length of a fall.
- A fall-arrest harness is the only device allowable for supporting the body in a fall-arrest system.
- When using multiple items of equipment, a dangerous situation can arise in which the safety function of an item of equipment can be affected by the safety function of another item of equipment.
- **WARNING – DANGER:** ensure that your products do not rub against abrasive or sharp surfaces.
- Users must be medically fit for activities at height. **WARNING:** inert suspension in a harness can result in serious injury or death.
- The Instructions for Use for each item of equipment used in conjunction with this product must be followed.
- The Instructions for Use must be provided to the user of this equipment, in the language of the country where the equipment is used.
- Make sure the markings on the product are legible.

When to retire your equipment:

WARNING: an exceptional event can lead you to retire a product after only one use, depending on the type and intensity of usage and the environment of usage (harsh environments, marine environments, sharp edges, extreme temperatures, chemicals...). A product must be retired when:

- It has been subjected to a major fall or load.
- It fails to pass inspection. You have any doubt as to its reliability.
- You do not know its full usage history.

- When it becomes obsolete due to changes in legislation, standards, technique or incompatibility with other equipment... Destroy these products to prevent further use.

Icons:

- A. Unlimited lifetime
- B. Marking
- C. Acceptable temperatures
- D. Usage precautions
- E. Cleaning
- F. Drying
- G. Storage/transport
- H. Maintenance
- I. Modifications/repairs (prohibited outside of Petzl facilities, except replacement parts)
- J. Questions/contact

3-year guarantee

Against any material or manufacturing defect. Exclusions: normal wear and tear, oxidation, modifications or alterations, incorrect storage, poor maintenance, negligence, uses for which this product is not designed.

Warning symbols

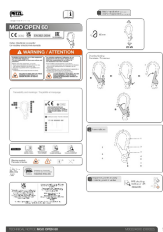
1. Situation presenting an imminent risk of serious injury or death. 2. Exposure to a potential risk of accident or injury. 3. Important information on the functioning or performance of your product. 4. Equipment incompatibility.

Traceability and markings

a. Meets PPE regulatory requirements. Notified body performing the EU type examination – b. Number of the notified body responsible for the production control of this PPE – c. Traceability: datamatrix – d. Strength – e. Serial number – f. Year of manufacture – g. Month of manufacture – h. Batch number – i. Individual identifier – j. Standards – k. Read the Instructions for Use carefully – l. Model identification – m. Manufacturer address

TECHNICAL NOTICE MGO OPEN 60 M0022400C (030322)

Documents / Resources

| | |
|---|---|
|  | <p>PETZL MGO OPEN 60 Auto-Locking Directional Connector [pdf] Instruction Manual MGO OPEN 60 Auto-Locking Directional Connector, MGO OPEN 60, Auto-Locking Directional Connector, Locking Directional Connector, Directional Connector, Connector</p> |
|---|---|

References

- [PETZL Petzl.com](https://www.petzl.com)