



PETZL MGO-60-INT Directional Connector User Manual

[Home](#) » [PETZL](#) » PETZL MGO-60-INT Directional Connector User Manual 



MGO-60-INT Directional Connector
User Manual



Contents

- [1 MGO-60-INT Directional Connector](#)
- [2 Field of application](#)
- [3 Nomenclature](#)
- [4 Inspection, points to verify](#)
- [5 Compatibility](#)
- [6 Carabiner positioning](#)
- [7 Additional information](#)
- [8 Traceability and markings](#)
- [9 Documents / Resources](#)
 - [9.1 References](#)
- [10 Related Posts](#)

MGO-60-INT Directional Connector



3 year guarantee

CSA Z259.12 – 2016

ANSI/ASSP Z359.12 – 2019



0082

EN 362: 2004



TPTC019/2011

Directional connector



WARNING

Activities involving the use of this equipment are inherently dangerous. You are responsible for your own actions and decisions.

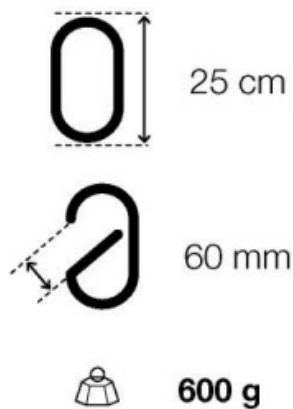
Before using this equipment, you must:

- Read and understand all Instructions for Use.
- Get specific training in its proper use.
- Become acquainted with its capabilities and limitations.
- Understand and accept the risks involved.

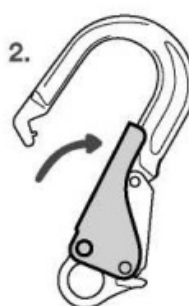
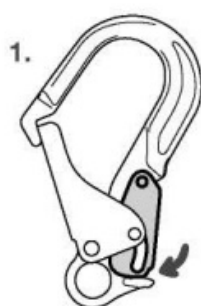


FAILURE TO HEED ANY OF THESE WARNINGS MAY RESULT IN SEVERE INJURY OR DEATH.

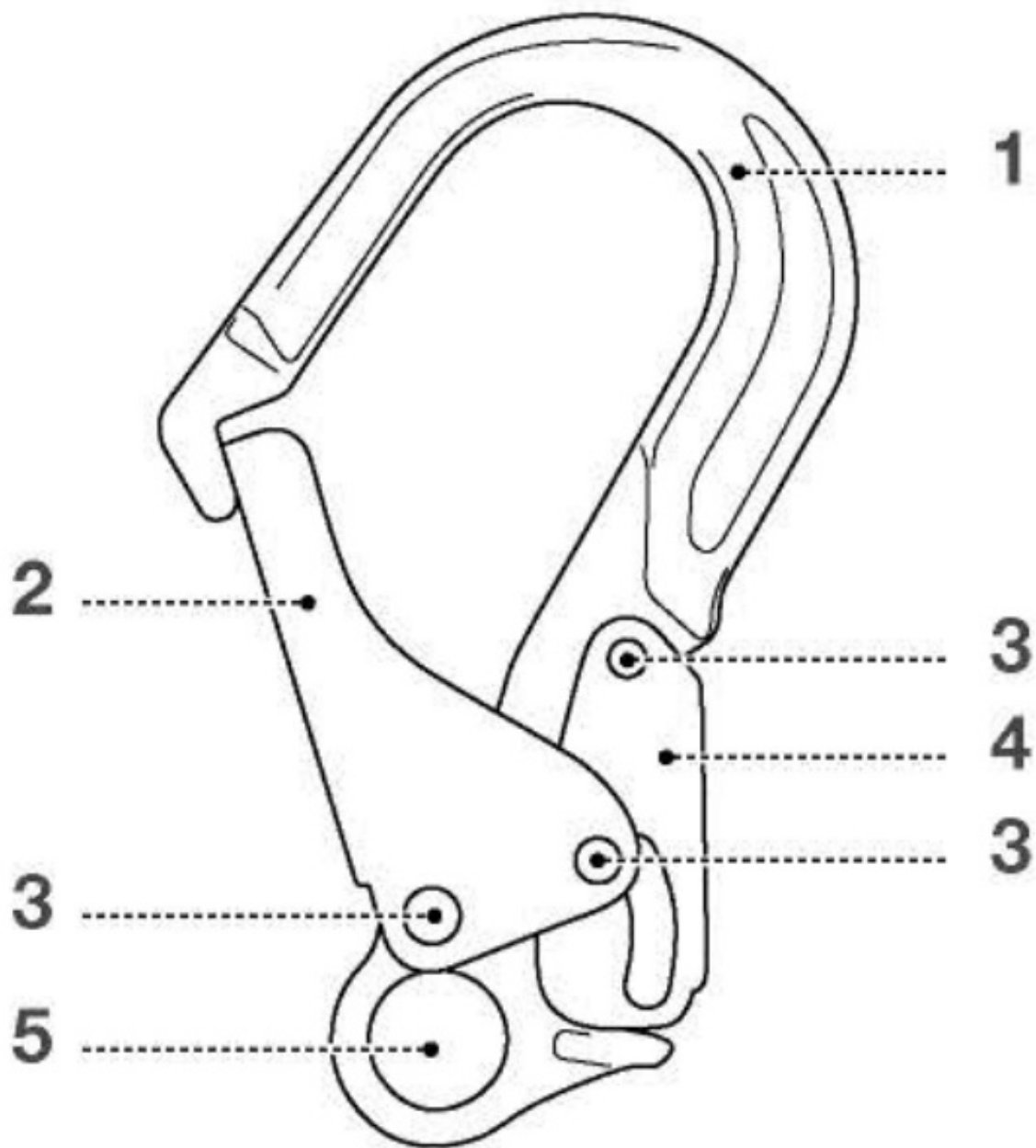
Field of application Oen pail



Opening/closing
Ouverture / Fermeture



Nomenclature



Inspection, points to verify



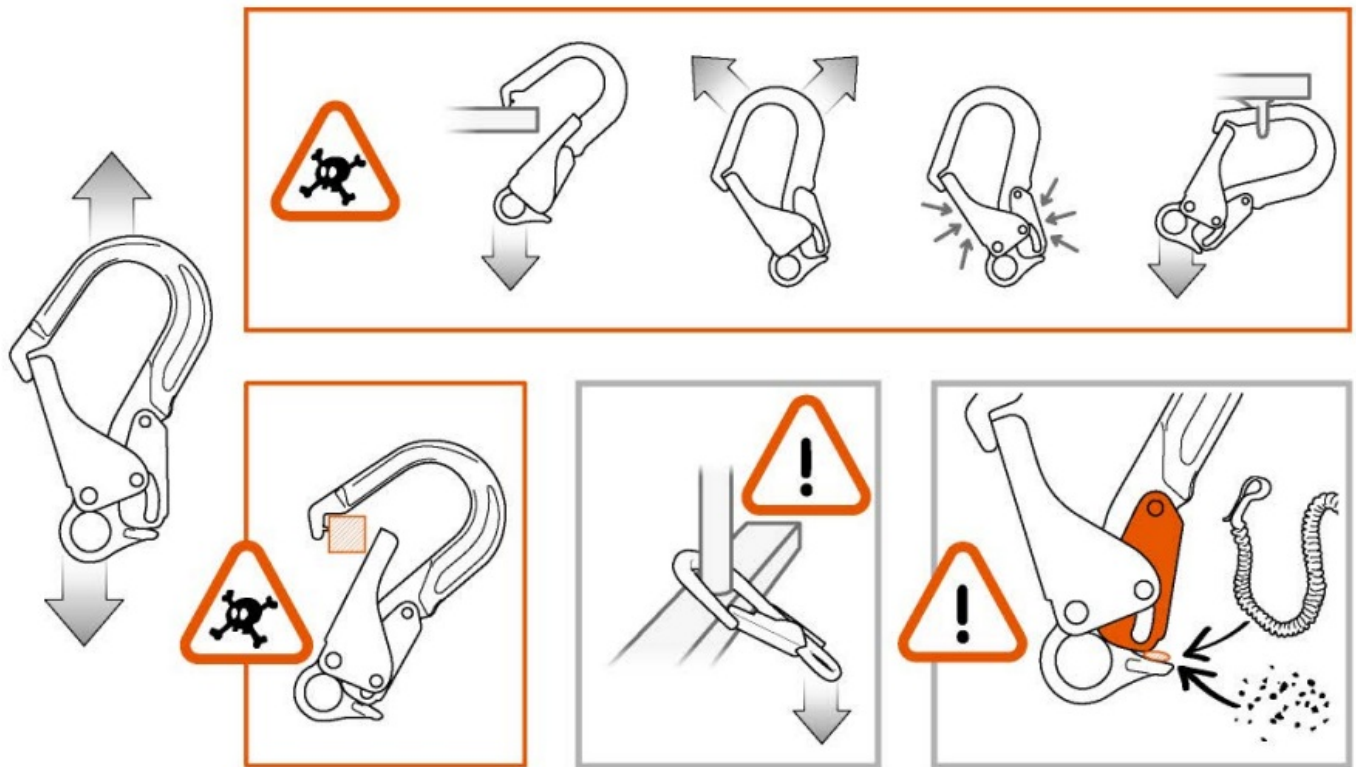
PPE checking

PETZL.COM

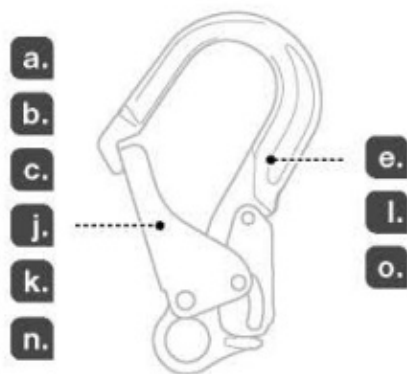


petzl.com

Compatibility Noy
Carabiner positioning



Traceability and markings



a. **CE**

SATRA Technology Europe Limited
Bracetown Business Park
Clonee D15YN2P
Republic of Ireland
N°2777

b. 0082

APAVE SUDEUROPE SAS
8 rue Jean-Jacques Vernazza
Z.A.C. Saumaty-Séon - CS 60193
13322 Marseille CEDEX 16
N°0082

e. Individual number / Numéro individuel

YY M 0000000 000

f.
g.
h.
i.

m.



PETZL.COM



Latest version



Other languages



Technical tips



PPE checking

Warning symbols



(1)



(2)



(3)



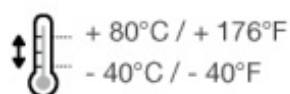
(4)

Additional information

A. Lifetime



B. Acceptable T°



C. Precautions for use



etc...

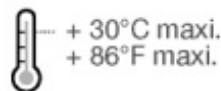
D. Cleaning



+ 30°C maxi.
+ 86°F maxi.



E. Drying



F. Storage - Transport



G. Maintenance



H. Modifications - Repairs



I. FAQ - Contact



→ petzl.com



CARABINER IN ACCORDANCE WITH CAN/CSA-2259.12-2016 AND ANSI/ASSP 2359.12-2019
CONNECTEUR CONFORME A CAN/CSA-2259.12-2016 ET ANSI/ASSP 2359.12-2019

These instructions explain how to correctly use your equipment. Only certain techniques and uses are described. The warning symbols inform you of some potential dangers related to the use of your equipment, but it is impossible to describe them all. Check Petzl.com for updates and additional information.

You are responsible for heeding each warning and using your equipment correctly.

Any misuse of this equipment will create additional dangers. Contact Petzl if you have any doubts or difficulty understanding these instructions.

Field of application

Personal protective equipment (PPE) used for fall protection.

EN 362: 2004 connector – classes A/T (anchor/manufactured termination).

Auto-locking carabiner designed for activities with a risk of falls from height.

This product must not be pushed beyond its limits, nor be used for any purpose other than that for which it is designed.

Responsibility

WARNING

Activities involving the use of this equipment are inherently dangerous.

You are responsible for your own actions, decisions and safety.

Before using this equipment, you must:

- Read and understand all Instructions for Use.
- Get specific training in its proper use.
- Become acquainted with its capabilities and limitations.
- Understand and accept the risks involved.

Failure to heed any of these warnings may result in severe injury or death.

This product must only be used by competent and responsible persons, or those placed under the direct and visual control of a competent and responsible person.

You are responsible for your actions, your decisions and your safety and you assume the consequences of same.

If you are not able, or not in a position to assume this responsibility, or if you do not fully understand the Instructions for Use, do not use this equipment.

Nomenclature

(1) Frame, (2) Gate, (3) Rivets, (4) Unlocking lever, (5) Attachment hole.

Principal materials: aluminum.

Inspection, points to verify

Your safety is related to the integrity of your equipment.

Petzl recommends a detailed inspection by a competent person at least once every 12 months (depending on current regulations in your country, and your conditions of usage). Follow the procedures described at [Petzl.com](https://www.petzl.com). Record the results on your PPE inspection form: type, model, manufacturer contact info, serial number or individual number, dates: manufacture, purchase, first use, next periodic inspection; problems, comments, inspector's name and signature.

Before each use

Verify the absence of any cracks, deformation, corrosion (on the frame, rivets, gate and unlocking lever). Verify that the gate opens, and that it closes automatically and completely.

During use

Verify that the carabiner is always loaded on the major axis. Verify that the carabiner moves freely in the anchor to avoid any jamming.

Avoid any pressure or rubbing that could unlock the gate or damage the gate and the unlocking lever.

It is important to regularly monitor the condition of the product and its connections to the other equipment in the system. Make sure that all items of equipment are correctly positioned with respect to each other.

Compatibility

Verify that this product is compatible with the other elements of the system in your application (compatible = good functional interaction).

Equipment used with your connector must meet current standards in your country (e.g. EN 358 lanyard).

Carabiner positioning

A carabiner is not indestructible.

A carabiner is strongest when loaded on the major axis, with the gate closed.

Loading a carabiner in any other way (e.g. cantilever loading) is dangerous and reduces its strength.

Check each time you close it to make sure it is completely locked.

Additional information

This product meets the requirements of Regulation (EU) 2016/425 on personal protective equipment. The EU declaration of conformity is available at [Petzl.com](https://www.petzl.com).

- In a fall arrest system, the length of the connector affects the fall distance.

- You must have a rescue plan and the means to rapidly implement it in case of difficulties encountered while using this equipment.

- The anchor point for the system should preferably be located above the user's position and should meet the requirements of the EN 795 standard (12 kN minimum strength).

- In a fall arrest system, it is essential to check the required clearance below the user before each use, in order to avoid hitting the ground or an obstacle in case of a fall.

- Make sure that the anchor point is correctly positioned, in order to limit the risk and the length of a fall.

- A fall arrest harness is the only device allowable for supporting the body in a fall arrest system.

- When using multiple items of equipment, a dangerous situation can arise in which the safety function of an item of equipment can be affected by the safety function of another item of equipment.

- **WARNING**

- **DANGER:** ensure that your products do not rub against abrasive or sharp surfaces.

- Users must be medically fit for activities at height.

WARNING: inert suspension in a harness can result in serious injury or death.

- The Instructions for Use for each item of equipment used in conjunction with this product must be followed.

- The Instructions for Use must be provided to the user of this equipment, in the language of the country where the equipment is used.

- Make sure the markings on the product are legible.

When to retire your equipment:

WARNING: an exceptional event can lead you to retire a product after only one use, depending on the type and intensity of usage and the environment of usage (harsh environments, marine environments, sharp edges, extreme temperatures, chemicals...).

A product must be retired when:

- It has been subjected to a major fall or load.
- It fails to pass inspection. You have any doubt as to its reliability.
- You do not know its full usage history.
- When it becomes obsolete due to changes in legislation, standards, technique or incompatibility with other equipment...

Destroy these products to prevent further use.

Icons:

- A. Unlimited lifetime
- B. Acceptable temperatures
- C. Usage precautions
- D. Cleaning
- E. Drying
- F. Storage/transport
- G. Maintenance
- H. Modifications/repairs (prohibited outside of Petzl facilities, except replacement parts)
- I. Questions/contact

3-year guarantee

Against any material or manufacturing defect. Exclusions: normal wear and tear, oxidation, modifications or alterations, incorrect storage, poor maintenance, negligence, uses for which this product is not designed.

Warning symbols

1. Situation presenting an imminent risk of serious injury or death.
2. Exposure to a potential risk of accident or injury.
3. Important information on the functioning or performance of your product.
4. Equipment incompatibility.

Traceability and markings

a. Meets PPE regulatory requirements. Notified body performing the EU type examination – b. Number of the notified body responsible for the production control of this PPE – c. Traceability: datamatrix – d. Strength – e. Serial number – f. Year of manufacture – g. Month of manufacture – h. Batch number – i. Individual identifier – j. Standards – k. Read the Instructions for Use carefully – l. Model identification – m. ANSI/CSA certification body – n. Manufacturer address – o. Material batch number



PETZL

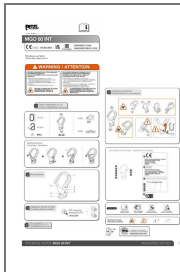
FR-38920 Crolles Cidex 105A

[PETZL.COM](https://www.petzl.com) ISO 9001 © Petzl

Sustaining our Community

Fondation FONDATION-PETZL.ORG

Documents / Resources



[PETZL MGO-60-INT Directional Connector](#) [pdf] User Manual
MGO-60-INT Directional Connector, MGO-60-INT, Directional Connector, Connector

References

- [PETZL Petzl.com](#)