



PETKIT PP130 Fit 3 Smart Activity Monitoring Pet Tracker Instructions

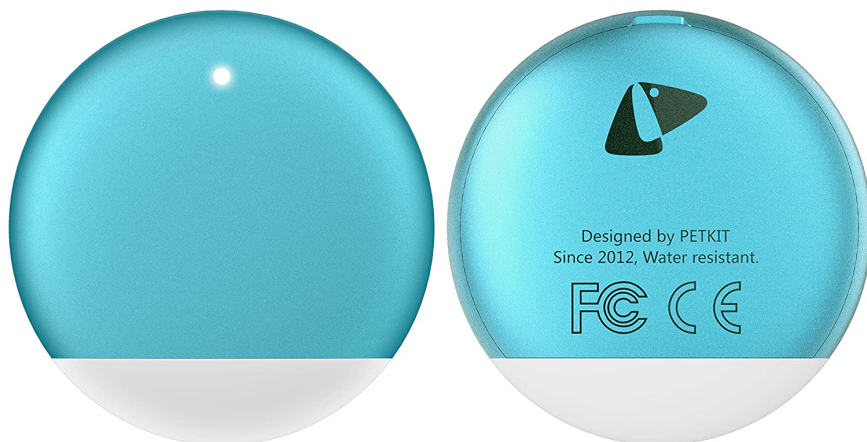
[Home](#) » [PETKIT](#) » PETKIT PP130 Fit 3 Smart Activity Monitoring Pet Tracker Instructions 

Contents

- [1 PETKIT PP130 Fit 3 Smart Activity Monitoring Pet Tracker](#)
- [2 HOW TO USE](#)
- [3 Wear correctly](#)
- [4 FCC warning](#)
- [5 Documents / Resources](#)
- [6 Related Posts](#)



PETKIT PP130 Fit 3 Smart Activity Monitoring Pet Tracker

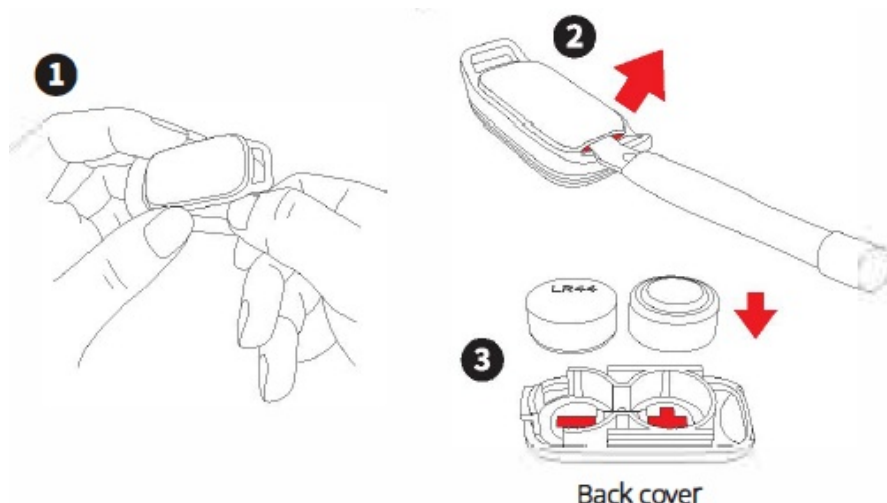


HOW TO USE

Install the battery

Pull the outer cover outward and take out the main unit. Use the stick to pry open the back cover. Install the batteries in the back cover according to the H+ and - indicated in the battery slot (make sure the batteries are

correctly oriented). Replace the back cover. When the device emits three “beepw sounds, the installation is complete



connect to the App

Download the PETKIT App and complete your register via the App. Go to the App's main page and follow the instructions to add the PETKIT FIT 3 and connect your device

Wear correctly

Adjust the tightness to fit the size of your pet's neck, then attach the PETKIT FIT 3 around your pet's neck.

- This product only supports Bluetooth communication. The App can only control the device after a Bluetooth connection has been established.
- This product uses an LR44 model button battery.

This device complies with part 15 of the FCC Rules. Operation is subject to the following two conditions:

1. This device may not cause harmful interference and.
2. this device must accept any interference received, including interference that may cause undesired operation.

FCC warning

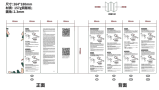
Changes or modifications not expressly approved by the party responsible for compliance could void the user's authority to operate the equipment.

Note: This equipment has been tested and found to comply with the limits for a Class B digital device, pursuant to part 15 of the FCC Rules. These limits are designed to provide reasonable protection against harmful interference in a residential installation. This equipment generates uses and can. However, there is no guarantee that interference will not occur in a particular installation. If this equipment does cause harmful interference to radio or television reception, which can be determined by turning the equipment off and on, the user is encouraged to try to correct the interference by one or more of the following measures:

- Reorient or relocate the receiving antenna.
- Increase the separation between the equipment and receiver.
- Connect the equipment into an outlet on a circuit different from that to which the receiver is connected.
- Consult the dealer or an experienced radio/television technician for help.

The device has been evaluated to meet general RF exposure requirement. The device can be used in portable exposure condition without restriction. IC warning English:
This device complies with Industry Canada licence – exempt RSS standard(Operation is subject to the following two conditions: (1 This device may not cause interference, and (2) This device must accept any interference, including interference that may cause undesired operation of the device.

Documents / Resources

	PETKIT PP130 Fit 3 Smart Activity Monitoring Pet Tracker [pdf] Instructions PP130, 2AEDG-PP130, 2AEDGPP130, PP130 Fit 3 Smart Activity Monitoring Pet Tracker, Fit 3, Smart Activity Monitoring Pet Tracker, Fit 3 Smart Activity Monitoring Pet Tracker
---	---