



# PERVASIVE DISPLAYS EPDK Pico Development Kit User Guide

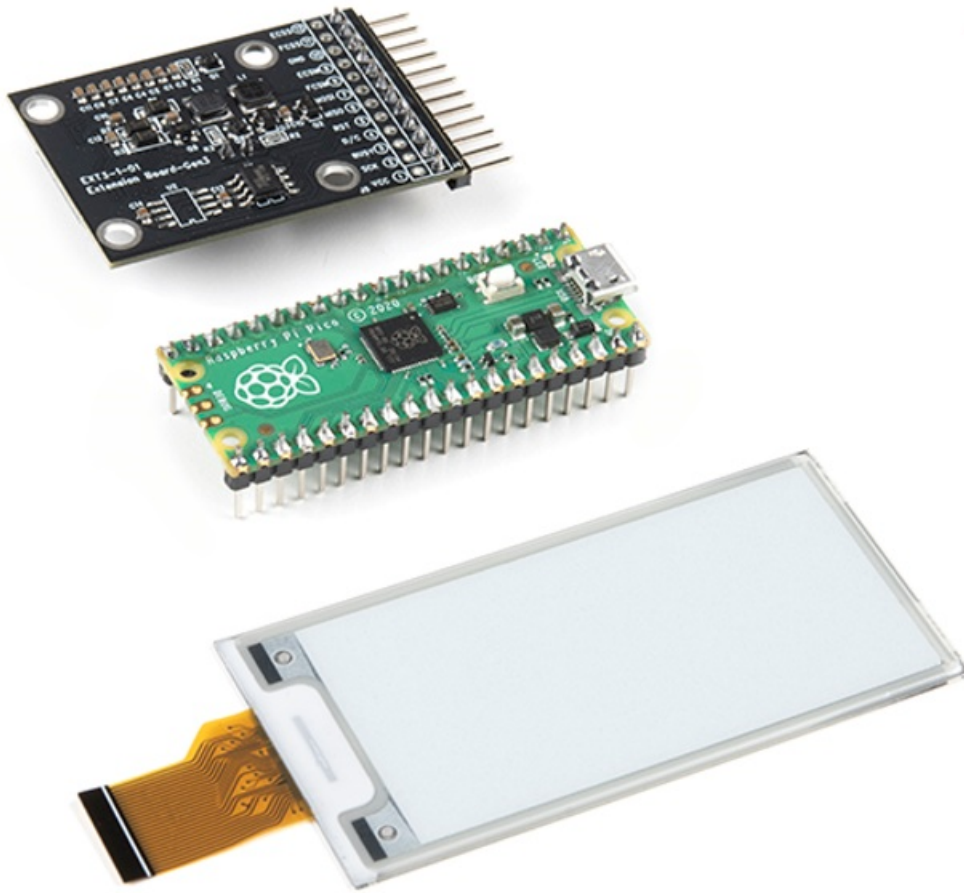
[Home](#) » [PERVASIVE DISPLAYS](#) » PERVASIVE DISPLAYS EPDK Pico Development Kit User Guide 

## Contents


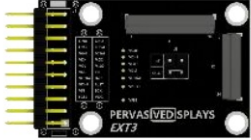

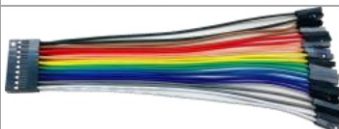
- [1 PERVASIVE DISPLAYS EPDK Pico Development Kit](#)
- [2 WHAT'S IN THE BOX](#)
- [3 Prerequisites](#)
- [4 Steps](#)
- [5 Documents / Resources](#)
  - [5.1 References](#)
- [6 Related Posts](#)



**PERVASIVE DISPLAYS EPDK Pico Development Kit**



## WHAT'S IN THE BOX

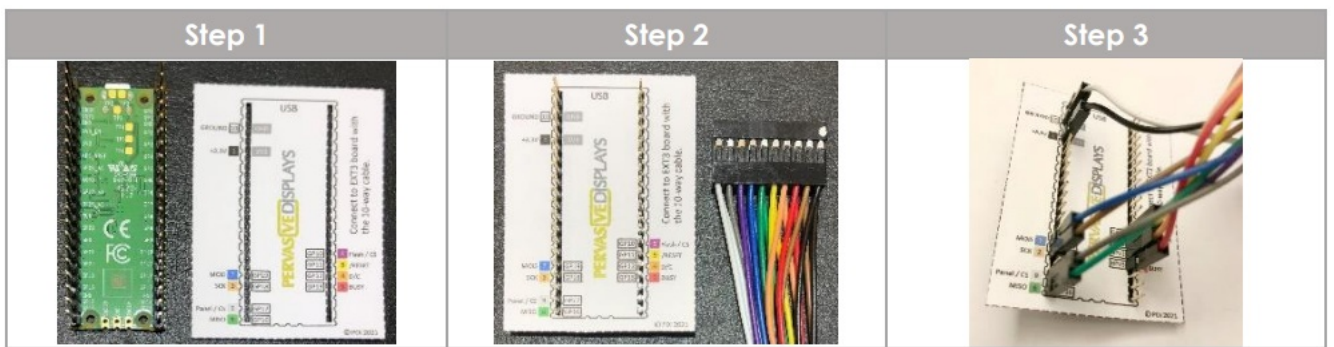
Content	Picture	Content	Picture
<b>1x</b> <u>Raspberry Pi Pico RP2040</u> with 40 header pins soldered		<b>1x</b> <u>EPD Extension board Gen 3 (EXT3)</u>	
<b>1x</b> <u>2.66" Aurora Mb Black &amp; White (E2266CS0C#)</u>		<b>1x</b> 20-pin bridging cable (15 cm long)	

## Prerequisites

- Prepare one micro-USB cable, which is not included in the kit.
- Download the Raspberry Pi Pico firmware using the QR-code or from [https://www.pervasivedisplays.com/wp-content/uploads/2021/10/Demo266\\_rpipico.zip](https://www.pervasivedisplays.com/wp-content/uploads/2021/10/Demo266_rpipico.zip).
- Unzip it to get the Demo266\_PicoReader.ino.rpipico.uf2 file and save it in your PC.

## Steps

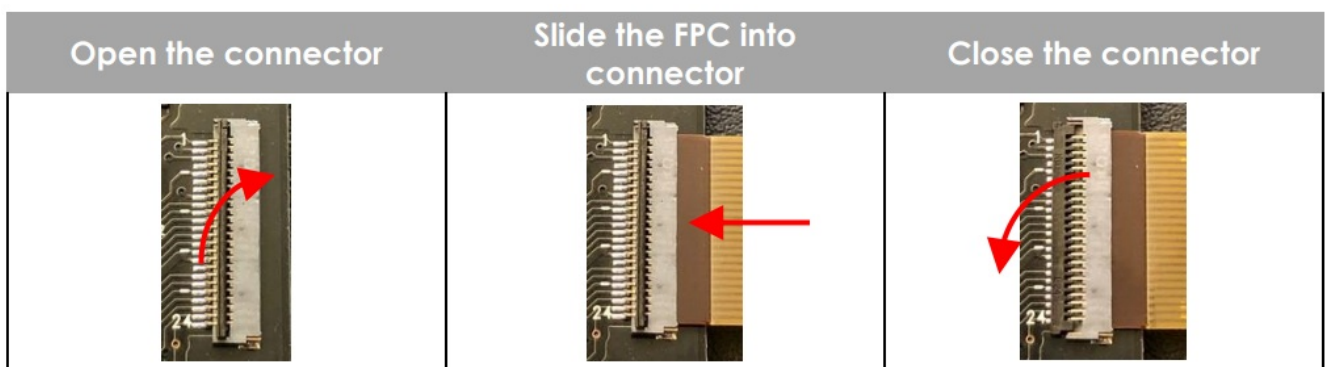
1. Unplug the micro-USB cable between the Pico and the USB port of the computer.
2. Place the pin mapping label on top of rear side of the Pico board and use the bridging cable (Step 1 and 2).
3. Follow the color codes to connect with the headers of the Pico (Step 3). Note that pin 1 of the bridging cable is black and only the first ten pins are used.



4. Connect the other side of the bridging cable to the EXT3 board (Step 4 and 5). There is a black mark on the EXT3 for pin 1 and a white one for pin 10.



5. Connect the 2.66" EPD to the J2 connector of the EXT3 board.



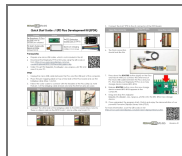
6. The final connection should look like this.



- Press down the BOOTSEL button (right) on the Pico and hold it while you connect the other end of the micro USB cable between the Pico and your PC. This installs your Raspberry Pi Pico as a mass storage device named RPI-RPI2.
- Release BOOTSEL button once the new storage device named RPI-RPI2 appears in the computer.
- Drag and drop the unzipped Demo266\_PicoReader.ino.rpipico.uf2 file onto the RPI-RPI2 mass storage device.
- Once uploaded, the program starts. Watch and enjoy the demonstration of our powerful Pervasive Displays Library Suite (PDLs).





For more information, scan the QR-code or visit <https://www.pervasivedisplays.com/pervasive-displays-library-suite/>.

## Documents / Resources



**PERVASIVE DISPLAYS EPDK Pico Development Kit** [pdf] User Guide  
EPDK Pico Development Kit, EPDK, Pico Development Kit, Development Kit

## References

-  [EPD Library Suite - Pervasive Displays](#)
-  [2.66" E ink Display – Aurora Mb \(V231\) - Pervasive Displays](#)
-  [EPD Extension Kit Gen 3 \(EXT3/EXT3-1\) - Pervasive Displays](#)
-  [Buy a Raspberry Pi Pico – Raspberry Pi](#)