



## peripage P10Pro Numeric Label Maker User Manual

[Home](#) » [peripage](#) » peripage P10Pro Numeric Label Maker User Manual 

# peripage

PeriPage Numeric Label Maker



**User Mamual**

Please scan the QR codeto view the English manual.

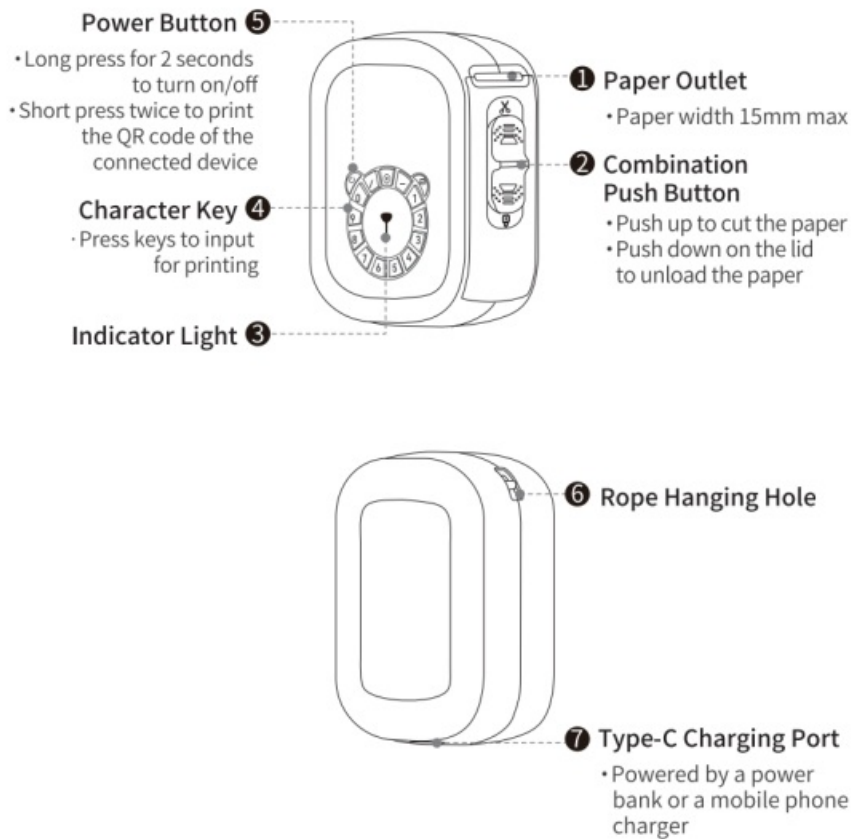


<https://www.ileadtek.com/guide/e-manual.html?tag=P10Pro>

## Contents

- 1 Product Sketch
- 2 App Printing
- 3 Replace Paper
- 4 Charging Instructions
- 5 Clean the Printer Head
- 6 Documents / Resources
- 6.1 References

## Product Sketch



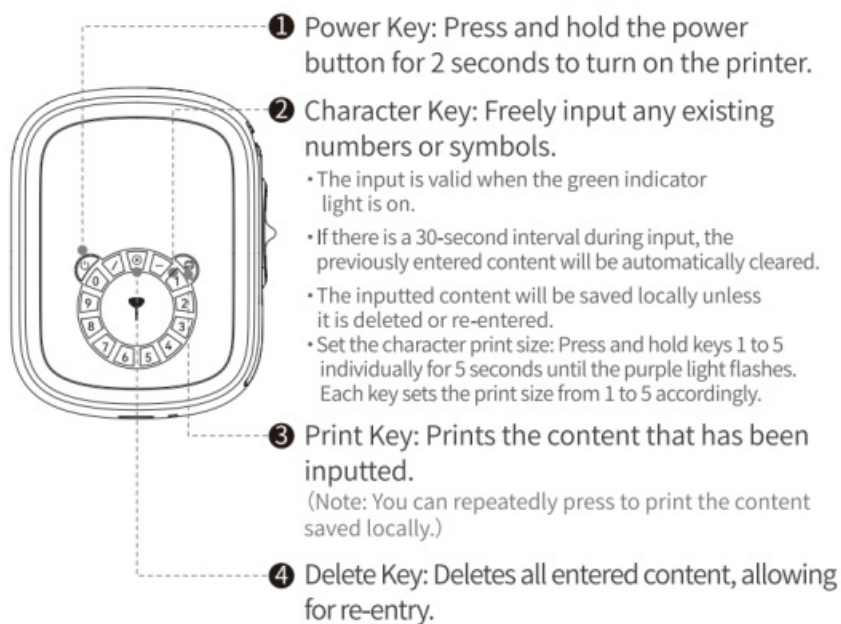
## Power Indicator Status

- White light constantly on: Ready to print

- Blue light on: Bluetooth connected
- Green light on: Key input valid
- Red light on: Out of paper/Charging/
- Flashing red light: Low battery, please charge in a time



## Print via Keys



## App Printing

### Step1: App Download.

Please search for [PeriPage] on Google Play or App Store, or scan the following QR code to download the App. And watch the video guide below.



App Download

<https://www.ileadtek.com/download/app/peripage.html>



Video Guide

<https://www.ileadtek.com/guide/video.html?tag=P10Pro>

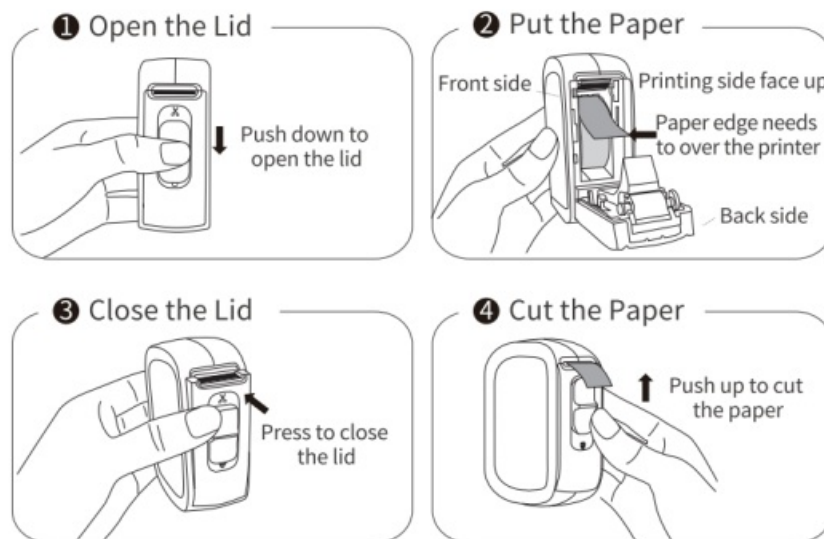
**step2: APP connects to printer**

1. Press and hold the power button for 2 seconds to turn on the printer.
2. Open the [PeriPage) App, select [Label Printer] for the device, and follow the App prompts to search for printer Bluetooth and connect it. Alternatively, press the power button twice to print the QR code, and use the App to scan and connect to the printer.

**(Note:** Do not search for printer Bluetooth in the Bluetooth settings)

3. After connecting the printer, open the provided features in the app to operate the printing.

## Replace Paper



## Charging Instructions

- Input: 5V  $\overline{=}$  1A. It is recommended to use a mobile phone charger for charging.
- It is recommended to fully charge the battery before use.
- To avoid natural degradation and inability to charge, please recharge the battery every 3 months during periods of non-use.

## Notes

If an incorrect battery type is replaced, there is a risk of explosion.

Do not expose the battery to excessive heat sources such as sunlight, fire, or similar conditions, and avoid exposing it to extremely low pressure, as this may lead to explosions or leakage of flammable liquids or gases.



The paper tearing blade has a sharp edge.

Do not touch it to prevent getting cut.

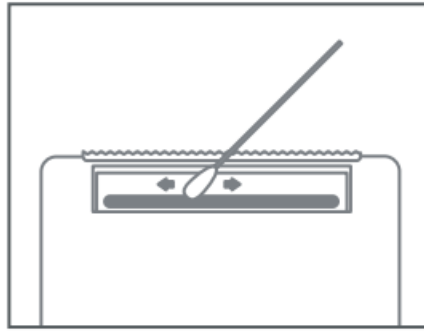


After printing, avoid direct contact with the print head to prevent overheating and potential scalding. Wait for at least thirty minutes after turning off the power before attempting to touch the print head.



The product is not suitable for children!

## Clean the Printer Head



1. Please turn off the printer and open the printer cover, take out the paper;
2. Dip a cotton cloth or cotton swab with medical alcohol, and wipe gently along the center to the periphery of the printer head;
3. After cleaning the printer head, do not use the printer immediately. Please wait for 1 to 2 minutes, use the printer after the alcohol has completely evaporated.

#### **Federal Communications Commission (FCC) Statement.**

This device complies with part 15 of the FCC Rules. Operation is subject to the following two conditions:

- (1) This device may not cause harmful interference, and
- (2) this device must accept any interference received, including interference that may cause undesired operation.

**Note:** This equipment has been tested and found to comply with the limits for a Class B digital device, pursuant to part 15 of the FCC Rules. These limits are designed to provide reasonable protection against harmful interference in a residential installation. This equipment generates, uses and can radiate radio frequency energy and, if not installed and used in accordance with the instructions, may cause harmful interference to radio communications. However, there is no guarantee that interference will not occur in a particular installation. If this equipment does cause harmful interference to radio or television reception, which can be determined by turning the equipment off and on, the user is encouraged to try to correct the interference by one or more of the following measures:

- Reorient or relocate the receiving antenna.
- Increase the separation between the equipment and receiver.
- Connect the equipment into an outlet on a circuit different from that to which the receiver is connected.
- Consult the dealer or an experienced radio/TV technician for help.

**Warning:** Changes or modifications made to this device not expressly approved by SAGE HUMAN ELECTRONICS INTERNATIONAL CO., LTD may void the FCC authorization to operate this device.

**Note:** The manufacturer is not responsible for any radio or TV interference caused by unauthorized modifications to this equipment. Such modifications could void the user's authority to operate the equipment.

#### **RF exposure statement:**

This device complies with FCC RF radiation exposure limits set forth for an uncontrolled environment. The device is installed and operated without restriction. This transmitter must not be co-located or operating in conjunction with any other antenna or transmitter. This equipment should be installed and operated with minimum distance 20cm between the radiator & your body.



Xiamen Lead Tek Co, Ltd.  
Unit 2101, No50 Chengyi North Street,  
Software Park Phase II, Xiamen, Fujian, PRC



[www.ileadiek.com](http://www.ileadiek.com)



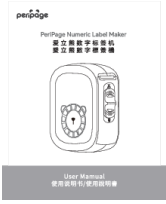
[service@ieadiek.com](mailto:service@ieadiek.com)



(+86)400-8550-520

V1.0

Documents / Resources

|   |   |
|---|---|
|  | <p><a href="#">peripage P10Pro Numeric Label Maker</a> [pdf] User Manual</p> <p>2ASPY-ALD-P101, 2ASPYALDP101, ald p101, P10Pro Numeric Label Maker, P10Pro, Numeric Label Maker, Label Maker, Maker</p> |
|---|---|

References

- [User Manual](#)

Manuals+. [Privacy Policy](#)

This website is an independent publication and is neither affiliated with nor endorsed by any of the trademark owners. The "Bluetooth®" word mark and logos are registered trademarks owned by Bluetooth SIG, Inc. The "Wi-Fi®" word mark and logos are registered trademarks owned by the Wi-Fi Alliance. Any use of these marks on this website does not imply any affiliation with or endorsement.