



Performance Tool 4-IN-1 Workbench Power Station Owner's Manual

[Home](#) » [Performance Tool](#) » Performance Tool 4-IN-1 Workbench Power Station Owner's Manual 

Contents

- 1 Performance Tool 4-IN-1 Workbench Power Station
- 2 SPECIFICATIONS
- 3 INSTALLATION
- 4 INSTRUCTIONS
- 5 TOOL FEATURES
- 6 SAFETY GUIDELINES / DEFINITIONS
- 7 UNPACKING AND INSPECTION
- 8 IMPORTANT SAFETY INSTRUCTIONS
- 9 Documents / Resources
 - 9.1 References
- 10 Related Posts



Performance Tool 4-IN-1 Workbench Power Station



SPECIFICATIONS

- Voltage:..... 125VAC/ 60Hz@ 15A (1850 watts) w/15A Circuit Breaker
- LED Lumens:.....1000 @ 6000K
- USB Ports:.....5V/2.4A (3.4A Max)
- USB-C Port:.....5V/3A (3.4A Max)
- Power Cord:.....6 ft. (1.83 m), 14 GA, SJT, 3-Prong Grounded
- Case:..... 19 g Steel, Powder Coated
- Dimensions:..... 27.75 L x 4.75 W x 2 in. D (70.5 L x 12 W x 5 cm D)
- Weight:.....5.75 lbs. (2.6 Kg)

Specifications are subject to change without notice.



WARNING: It is the owner and/or operators' responsibility to study all WARNINGS, operating, and maintenance instructions contained on the product label and instruction manual prior to operation of this product. The owner/operator shall retain product instructions for future reference. The owner and/or operator are responsible for maintenance, maintaining all decals or warning labels and while in use, maintaining the unit in good working order. If the owner and/or operator are not fluent in English, the product warnings and instructions shall be read and discussed with the operators' native language by the purchaser/owner or his designee. Make sure that the operator comprehends its contents. Safety information shall be emphasized and understood prior to usage.

The product shall be inspected per the operating instructions. Users of this product must fully understand these instructions. Each person operating this product must also be of sound mind and body and must not be under the influence of any substance that might impair their vision, dexterity or judgment. Protect yourself and others by observing all safety information.

Failure to comply with instructions could result in personal injury and/or property damage!

If you encounter any problems or difficulties, please contact our customer service department at:

1-[800-497-0552](tel:800-497-0552) between 6 a.m. and 5 p.m. Pacific time.

INSTALLATION

WALL MOUNTING: There are 2 sets of mounting holes which are located at 16.5 in. on center (stud mount, rear) on the back and at 26.5 in. on center (surface mount, front) under the plastic side caps.

16.5 IN. STUD MOUNTING HOLES (REAR):

- Select a location that allows 6 ft. power cord to be plugged into 120v outlet without the use of an extension cord.
- Use a stud finder to locate wall studs.
- Measure out and mark hole locations at 16.5 in. apart.

NOTE: Use a level to verify the holes are level.

- Attach suitable heavy duty wall anchors, not included, into the marked locations.

NOTE: Verify heads of mounting hardware will fit into mounting holes beforehand.

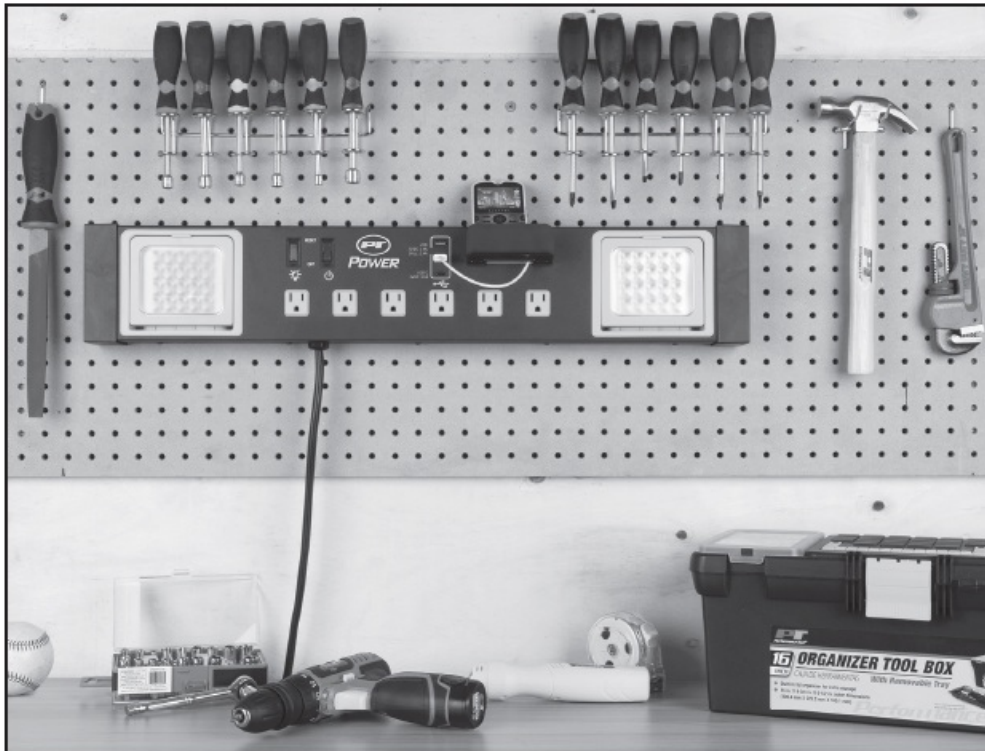
- Mount Power Station onto the anchors and test strength of the hold. There should be no movement or wiggle

present during testing.

- If there is movement then screw wall anchors further in until the movement is eliminated. 26.5 IN. SURFACE MOUNTING HOLES (FRONT):
- Select location within 6 feet of an electrical outlet.
- Remove plastic endcaps to expose mounting holes by removing the single screw on the outer ends.
- Measure out and mark hole locations at 26.5 in. apart OR hold Power Station up to wall and mark anchor locations through mounting holes. Note: use a level to verify the holes are level.
- If you are going to wall mount the Workbench Power Station, make sure to use heavy duty versions of the appropriate wall anchors. (not included)


NOTE: Verify heads of mounting hardware will fit into mounting holes beforehand.

- Mount Power Station and test strength of the hold. There should be no movement or wiggle present. If there is then tighten down wall anchors until the movement is eliminated.




INSTRUCTIONS

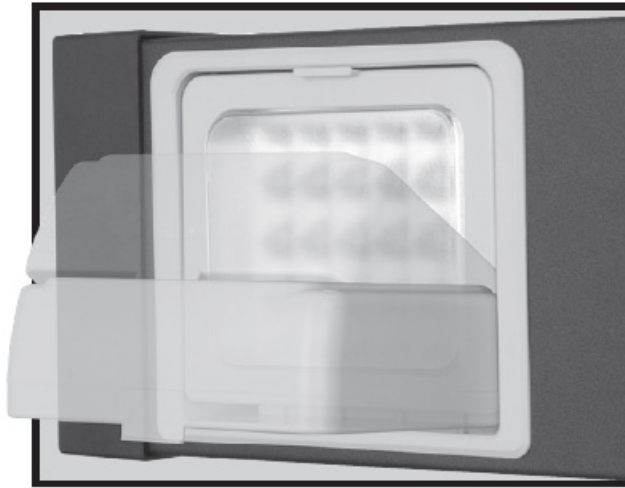
ELECTRICAL OUTLETS

1. Ensure the red lighted Reset/Off switch (4) , is in the off position.
2. Plug device(s) into the power strip.
3. Turn the power strip on, using the RESET/Off lighted power switch.
4. After using the power strip, turn the lighted power switch off.

LED WORK LIGHTS:

- Rotate the LED to the desired position. MAX. 90 degrees downward.
- Turn the LED work lights “ON” using the RESET/Off switch (4). 

NOTE: Mount the Power Station above your work area and point the lights down to provide light while performing tasks.



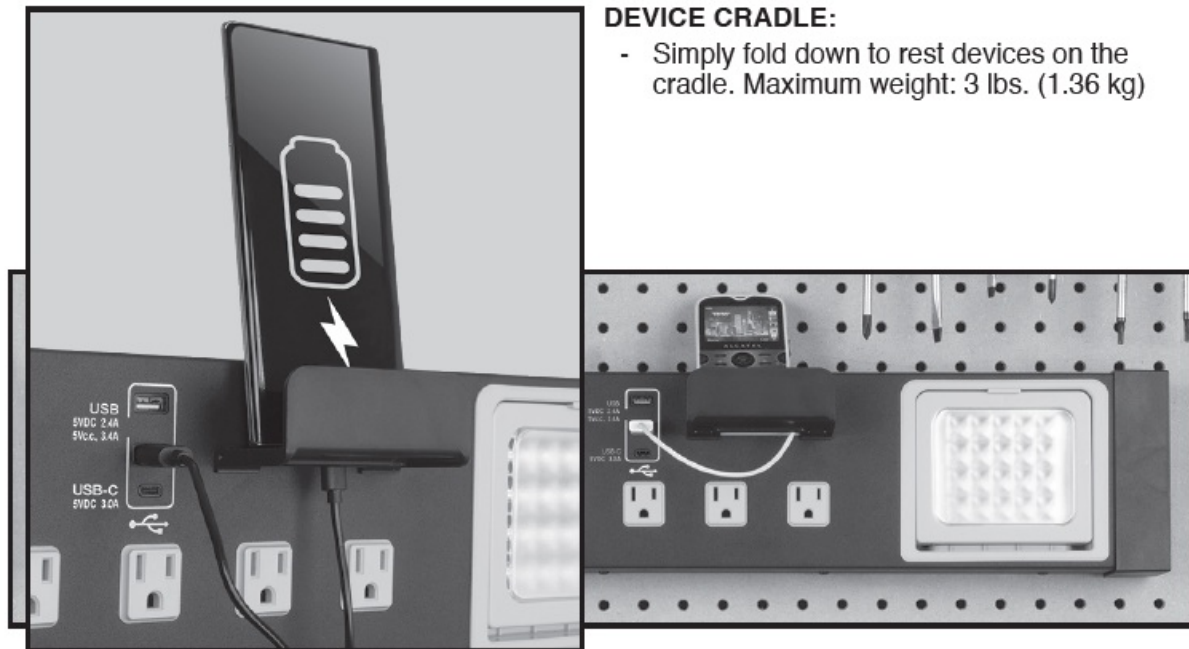
WARNING: The built in LEDs are high output lights, 1000 lumens @ 6000 Kelvin. To avoid discomfort and injury DO NOT shine directly in anyone’s eyes, including your own.

USB/USB-C POWER PORTS:

- Connect a USB ended charging cord that is compatible with your device into either of the USB ports (2), or a USB-C charging cord into the USB-C port.
- Connect the other end of the charging cable to your portable electronic device to begin charging.
- USB port can supply a maximum of 5V @2.4A through a single port and USB-C can supply a maximum of 5V @ 3A. If more than 1 port is in use then the maximum combined output of 3.4 amps will be split between the devices slowing down charging times.

NOTE:

- USB and USB-C charging ports may not charge all devices.
- Some devices may require a proprietary USB power supply.
- Charging speeds may vary by product.
- If charging is interrupted when a device is added then unplug second device until the first, high power consumption device, has finished charging.
- USB charging cable is not included. Refer to the owner’s manual of your portable electronic device in charging instructions.

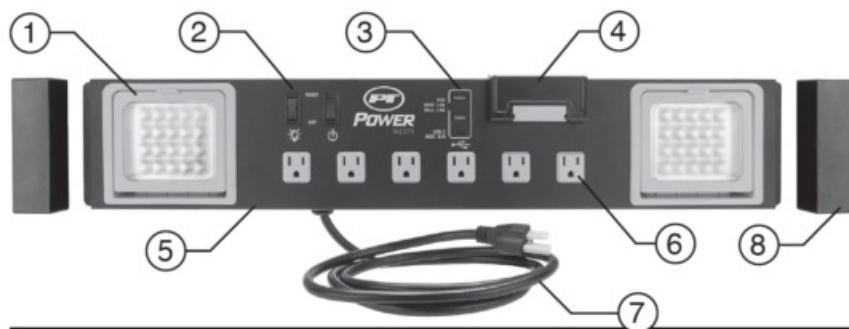


DEVICE CRADLE:

- Simply fold down to rest devices on the cradle. Maximum weight: 3 lbs. (1.36 kg)

TOOL FEATURES

1. (2) LED Work Lights (pivot up to 90°)
2. On/Off Power Switch & Light Switch
3. USB & USB-C Charging Ports
4. Device Cradle
5. Metal housing
6. (6) 120 V grounded outlets
7. 6 ft. Power Cord
8. End Caps



SAFETY GUIDELINES / DEFINITIONS

This instruction manual is intended for your benefit. Please read and follow the safety, installation, maintenance and troubleshooting steps described within to ensure your safety and satisfaction. The contents of this instruction manual are based upon the latest product information available at the time of publication. The manufacturer reserves the right to make product changes at any time without notice.

WARNING: Read and understand this entire instruction manual before attempting to assemble, install, operate or maintain this product. Failure to comply with the instructions may result in serious personal injury and/or property damage!

The following signal words are used to emphasize safety warnings that must be followed when using this

product:



DANGER: Indicates an imminently hazardous situation that, if not avoided, **WILL** result in death or serious injury.

WARNING: Indicates a potentially hazardous situation that, if not avoided, **COULD** result in death or serious injury.



CAUTION: Indicates a potentially hazardous situation that, if not avoided, **MAY** result in minor or moderate injury.



NOTE: Indicates important information, which if not followed, **MAY** cause damage to equipment.

UNPACKING AND INSPECTION

After opening the carton, unpack your new product and related parts and accessories. Please inspect it carefully for any damage that may have occurred during transit. Please check it against the photograph on carton. If any parts are missing, please call customer service at 1-[800-497-0552](tel:800-497-0552) between 6 a.m. and 5 p.m. Pacific time.

WARNING: DO NOT operate this product if damaged during shipment, handling or misuse. Do not operate the product until the parts have been replaced or the fault rectified. Failure to do so may result in serious personal injury or property damage. All damaged parts must be repaired or replaced as needed prior to operating this product. Check to see that all nuts, bolts and fittings are secure before putting this product into service. If you have any questions, or require assistance with damaged or missing parts, please contact our customer service department at 1-[800-497-0552](tel:800-497-0552). Please have the serial number, model number, and date of purchase available for reference when calling.

WARNING. READ, UNDERSTAND AND FOLLOW ALL INSTRUCTIONS AND WARNINGS BEFORE OPERATING THIS PRODUCT. FAILURE TO DO SO MAY RESULT IN FIRE, ELECTRICAL SHOCK, PERSONAL INJURY AND/OR PROPERTY DAMAGE AND WILL VOID WARRANTY.

WORKPLACE SECURITY

- Keep the area clean and well lit. Cluttered or dark areas can cause accidents.
- Do not use power tools in explosive environments, e.g. in the presence of flammable liquids, gases or dust.
Power tools create sparks which may ignite the dust or fumes.
- Keep children and people away during the use of the tool. Distractions can cause you to lose control of the tool.

IMPORTANT SAFETY INSTRUCTIONS

- POWER STATION IS NOT WATERPROOF and is not intended for use in showers, saunas or in potentially wet locations. ALWAYS keep this cord reel away from sinks, tubs, showers, etc. NEVER attempt to pick up plugged-in power tools or appliance should they fall into standing water. Electrocution could result!
- Where possible use a Ground Fault Circuit Interrupter (GFCI) protected supply. Use of a GFCI reduces the risk of electric shock.
- Inspect before every use; do not use if parts are loose or damaged or if insulation is worn.
- Wear ANSI-approved safety goggles and heavy-duty work gloves during use.

- This Power Station MUST ALWAYS BE USED in accordance with all electrical and safety codes and ordinances, including the most recent National Electric Code (NEC) and with the Occupational Safety and Health Act (OSHA) Volume 1 on General Industry Standards and interpretations.
- ALWAYS make certain that the power source conforms to the requirements on the Power Station.
- ALWAYS disconnect the power source before servicing or inspecting the Power Station for any reason.
- This Power Station is only for use on 110-125V AC 50-60Hz power and is equipped with an approved 3 conductor cord with a 3-prong, grounded plug. TO REDUCE THE RISK OF ELECTRICAL SHOCK, it should only be plugged into a properly grounded 3-prong outlet. Never modify the plug in any way. Do not use any adapter plugs.
- The lead power cord comes equipped with a 3-prong grounded plug. DO NOT remove the third prong, modify the plug or use any 2 prong adapter plugs. If it will not fit the outlet, have the proper outlet installed by a qualified electrician. Improper connection of the grounding conductor can result in a risk of electrical shock.
- Maintain product labels and nameplates. These carry important safety information.
- This Power Station is intended for use as a general indoor power source, DO NOT use in potential dangerous locations, such as in flammable or explosive atmospheres.
- Do not use with heaters, generators, sump pumps, water-related devices, life support devices, medical devices, cars or motorcycles, golf-cart battery chargers, or aquariums.
- Avoid body contact with grounded surfaces such as pipes, radiators, ranges and refrigerators. There is an increased risk of electric shock if your body is grounded.
- Never open the lights or housing. There are no user serviceable parts inside and opening either renders any warranty null and void.
- Do not attach an extension cord to this item's input cord.
- KEEP OUT OF REACH OF CHILDREN. This product is not a toy and is not intended for children. It is for adult use only.
- DO NOT handle this tool or try to plug it in when your hands are wet or damp or when you are standing on a wet or damp surface or in water.

SPECIAL NOTES

- Use this product only with a 110 – 125 volt AC power source. Do not exceed 1875 watts and/or 15 amps maximum load.
- This unit is equipped with a circuit breaker. If the circuit breaker “trips” due to a power overload, do the following:
 - Unplug the Power Station from the power source.
 - Turn the power switch of each piece of connected equipment to the off position.
 - Unplug and remove all equipment, tools, and apparatus connected to this product.
 - Wait a few minutes, then plug the multi-outlet strip back into the power source.
 - Reset the circuit breaker switch by changing its position from “OFF” to “RESET.”
 - Plug each piece of equipment back into the multiple outlet power strip one at a time taking care not to exceed maximum wattage and amperage load.

1 YEAR WARRANTY

PERFORMANCE TOOL® extends only the following warranties, and only to original retail purchasers. These warranties give specific legal rights. Except where prohibited by local law, the law of the State of Washington

governs all warranties and all exclusions and limitations of warranties and remedies. There may be other rights which vary from state to state. PERFORMANCE TOOL® warrants the product to be free from defects in materials and workmanship under normal use and service. A defective product may be returned for a free replacement within 90 days from the date of purchase, provided that product is returned to place of purchase immediately after discovery of defect. After 90 days and up to one year from date of purchase, PERFORMANCE TOOL® will replace at no charge any parts which our examination shall disclose to be defective and under warranty. These warranties shall be valid only when a sales receipt showing the date of purchase accompanies the defective product or defective part (s) being returned. For part (s) after 90 days, please remit your request, postage prepaid to:

PERFORMANCE TOOL, P.O. Box 88259 Tukwila, WA 98138

These warranties exclude blades, bits, punches, dies, bulbs, fuses, hoses, and other consumables which must be replaced under normal use and service. These warranties shall not apply to any product or part which is used for a purpose for which it is not designed, or which has been repaired or altered in any way so as to affect adversely its performance or reliability, nor shall these warranties apply to any product or part which has been subject to misuse, neglect, accident or wear and tear incident to normal use and service.


PERFORMANCE TOOL® does not authorize any other person to make any warranty or to assume any liability in connection with its products.

Except for warranties of title and the limited express warranties set forth above, PERFORMANCE TOOL® makes no express or implied warranties of any kind with respect to its products. In particular, PERFORMANCE TOOL® makes no implied warranty of merchantability and no implied warranty of fitness for any particular purpose, except that for goods purchased primarily for personal, family or household use and not for commercial or business use, PERFORMANCE TOOL® makes an implied warranty of merchantability (and, if otherwise applicable, an implied warranty of fitness for a particular purpose), but only for the particular qualities or characteristics, and for the duration, expressly warranted above. The laws on limitation of implied warranties may differ from state to state, so the above limitations may not apply in all cases.

PERFORMANCE TOOL® shall not be liable for consequential, incidental or special damages resulting from or in any manner related to any product, or to the design, use, or any inability to use the product. The sole and exclusive remedy for a defective product or part shall be the repair, or replacement thereof as provided above. The laws on limitation of remedies or on consequential, incidental or special damages may vary from state to state, so the above limitations may not apply in all cases.

© Copyright 2024 WILMAR, LLC, P.O. Box 88259 Tukwila, WA 98138

Documents / Resources

	Performance Tool 4-IN-1 Workbench Power Station [pdf] Owner's Manual 4-IN-1 Workbench Power Station, 4-IN-1, Workbench Power Station, Power Station, Station
---	---

References

- [User Manual](#)

[Manuals+](#), [Privacy Policy](#)

This website is an independent publication and is neither affiliated with nor endorsed by any of the trademark owners. The "Bluetooth®" word mark and logos are registered trademarks owned by Bluetooth SIG, Inc. The "Wi-Fi®" word mark and logos are registered trademarks owned by the Wi-Fi Alliance. Any use of these marks on this website does not imply any affiliation with or endorsement.