



## PerchMe G02 Smart Bird Feeder With Camera Owner's Manual

[Home](#) » [PerchMe](#) » PerchMe G02 Smart Bird Feeder With Camera Owner's Manual 



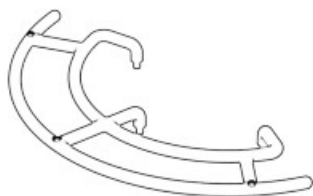
Welcome to PerchMe, where every perch is a story. and every story is a step toward a better world!

## Contents

- [1 What's in the box?](#)
- [2 ASSEMBLY](#)
- [3 CONNECTION](#)
- [4 INSTALLATION](#)
- [5 FILL SEEDS](#)
- [6 Documents / Resources](#)
- [6.1 References](#)

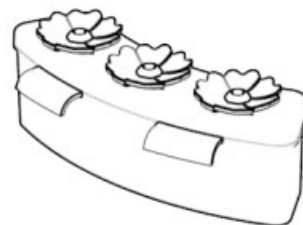
## What's in the box?





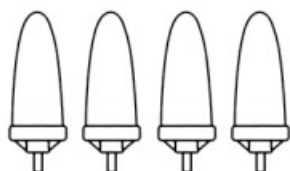
①

Bird perch\*1



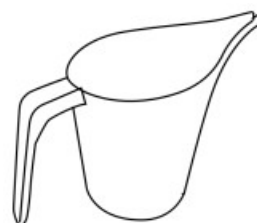
②

Hummingbird feeder \*1



③

Fruit holder 4



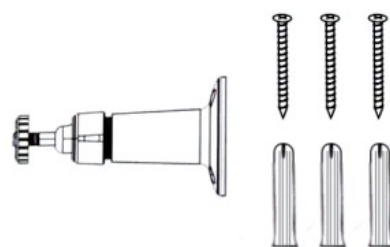
④

Bird seed jug\*1



⑤

3W Solar panel\*1



⑥

Solar bracket\*1



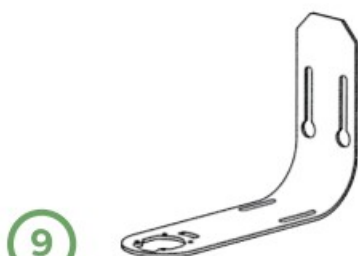
⑦

Type-C power cable\*1



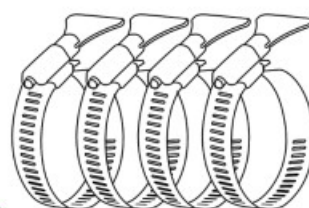
⑧

Antenna\*1



⑨

L-shaped mounting bracket\*1



⑩

Metal hose clamps \*4



11

Strap\*1



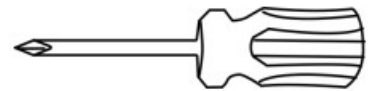
12

Ejector pin\*1



13

Cleaning brush\*1



14

Perch screwdriver\*1



15

Perch screws\*6



16

Bracket screws\*4



17

Anchors \*4

6 includes Solar Bracket Screws\*3+Anchors \*3



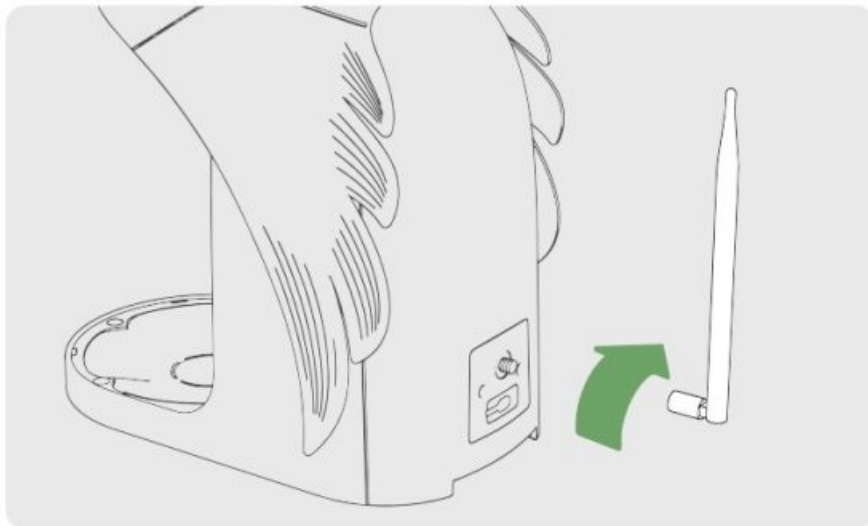
### Video Installation

Scan the QR code to view the installation video

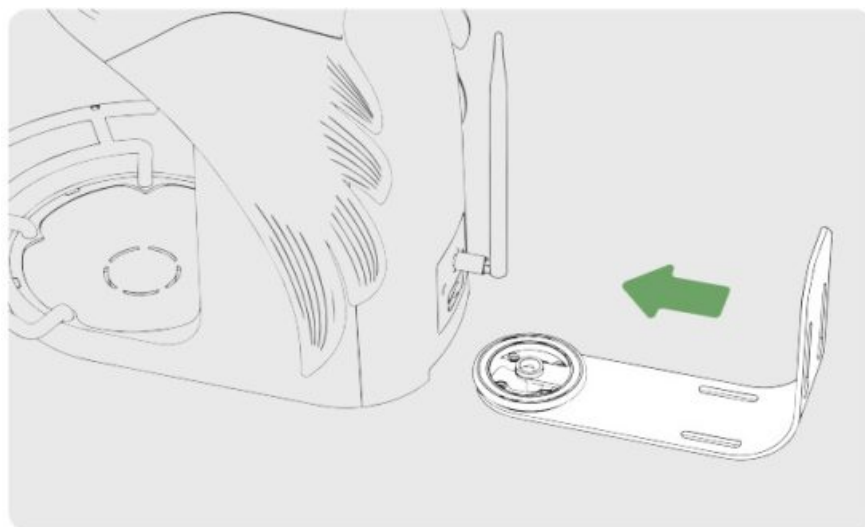
Alternatively, you can directly access the website <https://www.perchme.com/pages/support> to obtain installation videos

## ASSEMBLY

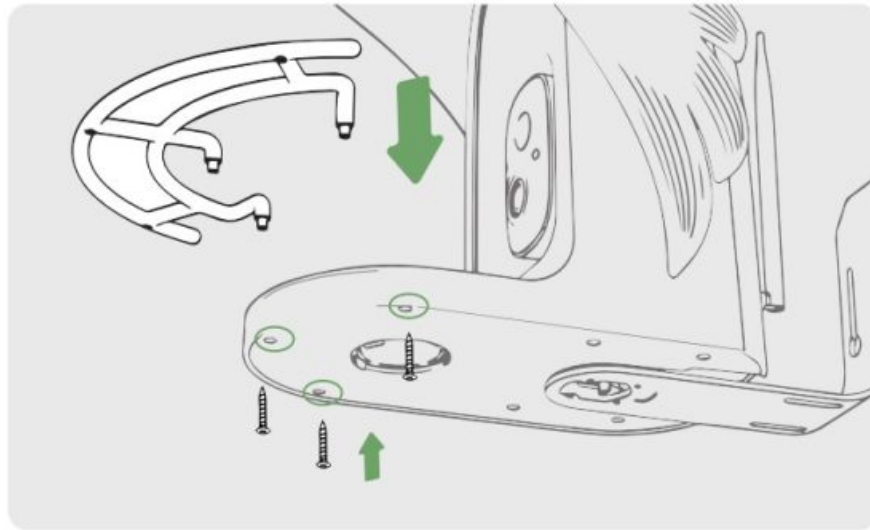
### Accessories Assembly



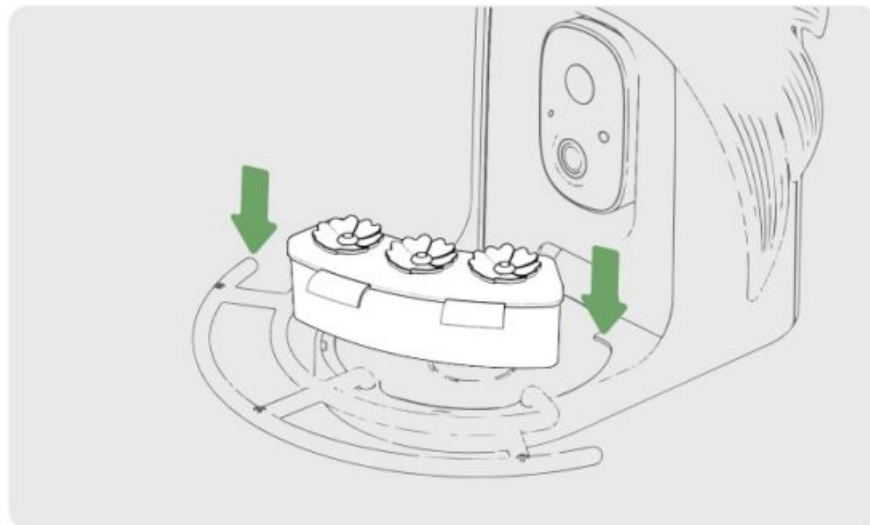
1. Assemble the antenna: Attach the antenna to the screw on the back of the bird feeder.



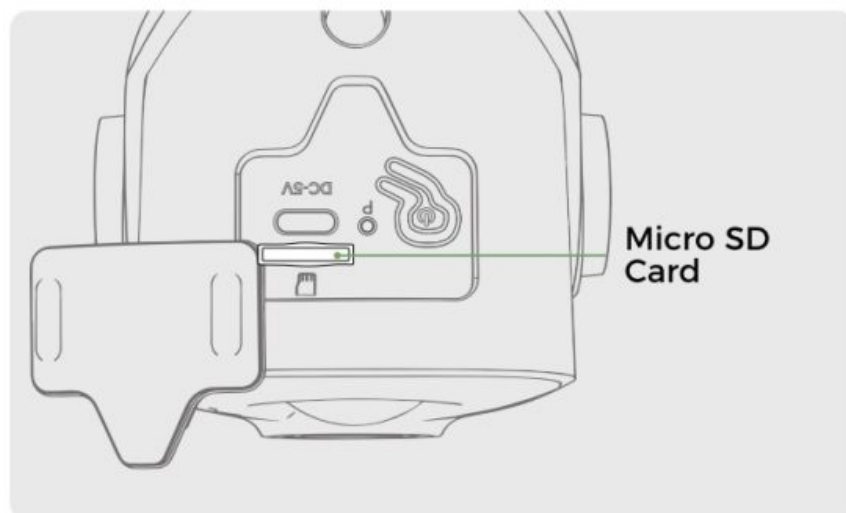
2. Mount the bracket (tree, wall or pole mounting needed): Push the L-shaped mounting bracket to the bottom of the container.



3. Mount the bird perch: Secure the bird perch to the seed tray edge using three provided perch screws.



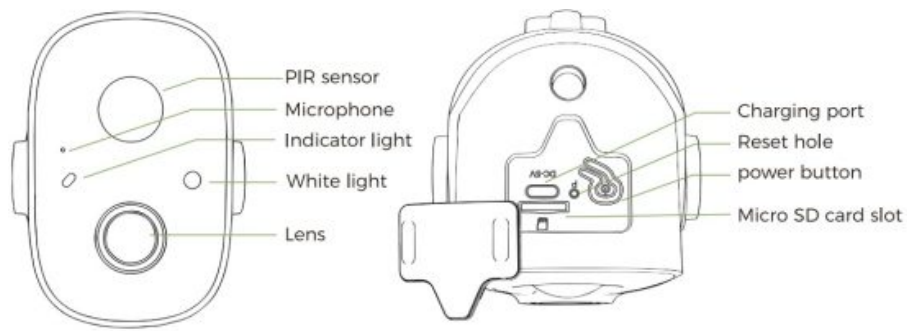
4. Insert the hummingbird feeder and fruit holders: Insert the hummingbird feeder and the fruit holders in the perch.



5. Insert Micro SD Card into Camera (optional): The smart bird feeder works without a SD card, storing videos in the cloud. For local storage, insert a Micro SD card (up to 128GB) into the camera's built-in slot before assembly

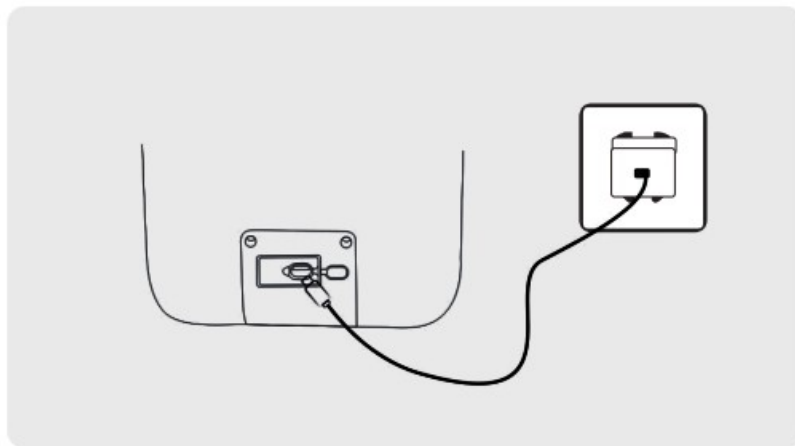
## CONNECTION

### Camera Connection



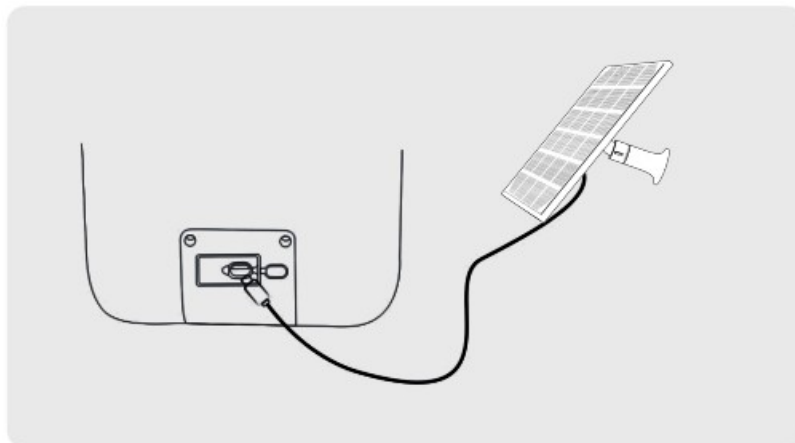
## 2.1 Two Ways to Charge

We recommend you charge the camera module for 2-4 hours using the type-C cable. The app will also remind you to charge your smart bird feeder when the battery is low.



### 1. Indoor Charging:

Connect the Type-C cable to the camera and a 5V/1.5A adapter.



### 2. Outdoor Charging:

Connect the solar panel to the camera using the cable. Find a sunny location for optimal charging.

**Note:** It may take several hours to fully charge using the solar panel, depending on sunlight conditions.

## 2.2 Indicator Light

LED Indicator	<span style="color: blue;">●</span> Solid Blue	<span style="color: gray;">○</span> None	<span style="color: orange;">●</span> Solid Yellow	<span style="color: green;">●</span> Solid Green
Description	Working mode	Sleep Mode	Charging mode	Fully charged mode

## 2.3 How to operate



**Power On:** Long press the power button of the camera for 3s to turn on the camera. Then the indicator light in the front of the camera will be solid blue.



**Enter network configuration mode:** Double click the power button until you hear the sound “ding dong ding dong”, the light is solid blue.



**Power Off:** Long press the power button of the camera for 3s to turn off the camera until the indicator is off.



**Resetting the Camera(if necessary):** Insert the provided ejector pin into the reboot hole and hold for 5 seconds. Note: The reboot hole is used to restart the camera without changing the settings.

## 2.4 Camera Specifications



MODEL	G02
Camera Lens	M125:3.3mm,F2.0,200W
Viewing Angle	Vertical: 60°Diagonal: 140° Horizontal: 117°
Minimum Illumination	0.01 Lux
Video Compression Method	H.264
Lighting Frequency	50Hz,60Hz
Image Frame Rate	15fps
Image Resolution	Max.1920 X1080P
Infrared Night Vision Distance	22.97ft
Video Bit Rate	Adaptive
Wi-Fi	2.4 GHz WiFi
SupportingAgreement	TCP/IP, UDP/IP, DHCP.TMP, MUTP
Storage Media	Micro SD card (up to 128GB,not include)
Battery Capacity	5000mAh
Standby Time	1 Year
Charging Voltage	DV 5V+-5% 1.5A
Charging Time	8~10 hours
Waterproof Level	IP65
Shutdown Power Consumption	0.32mW
StandbyPower Consumption	1.68mW
WorkingPower Consumption during the Day	0.88W
Working Temperature	-10°~45°C
Storage Environment	-20°~60°C
Certificate	CE.FCC.ROHS.WEEE. MSDS,UN38.3.UL62368.Batt G

## Solar Panel Specifications

Category	Specification
Output Power	3W $\pm$ 5%
Open Circuit Voltage	7.2V $\pm$ 5
Standard Working Voltage	6V $\pm$ 5
Standard Working Current	500mA $\pm$ 5
Conversion Efficiency	$\geq$ 19.5%
Output Power	$\geq$ 2.5W
Length	169 $\pm$ 0.25mm
Width	116 $\pm$ 0.25mm
Thickness	2.3 $\pm$ 0.2mm
Cable	Optional Type-C or Micro USB 5P connector, length $\geq$ 2 .9m, PVC material, (13/0.15BC) x 2C
Storage Conditions	Normal temperature, humidity less than 60%
Usage Environment	Outdoor use without shelter
Working Temperature	-20°C~60°C
Dust & Water Resistance	IP65

## App Connection



<https://www.perchme.com/pages/support>

### 3.1 Download

Scan the QR Code to download the app, or search the “VicoHome” app from the App Store or Google Play, or visit <https://www.vicohome.io/download> to download.

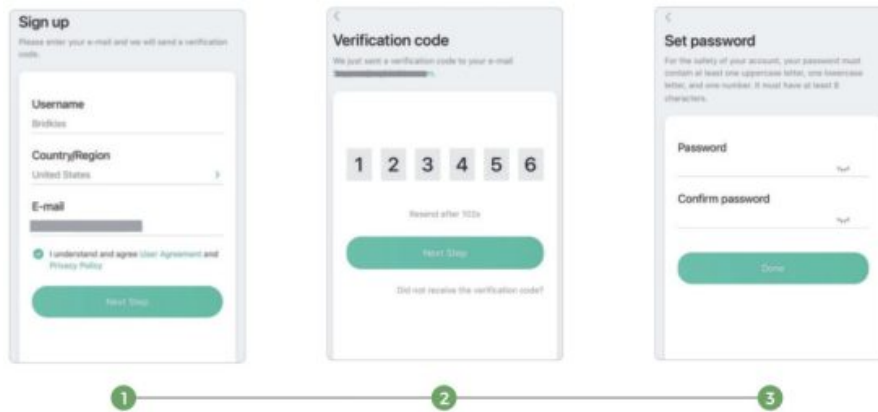


**Note:** The most up-to-date information can be found through the APP.

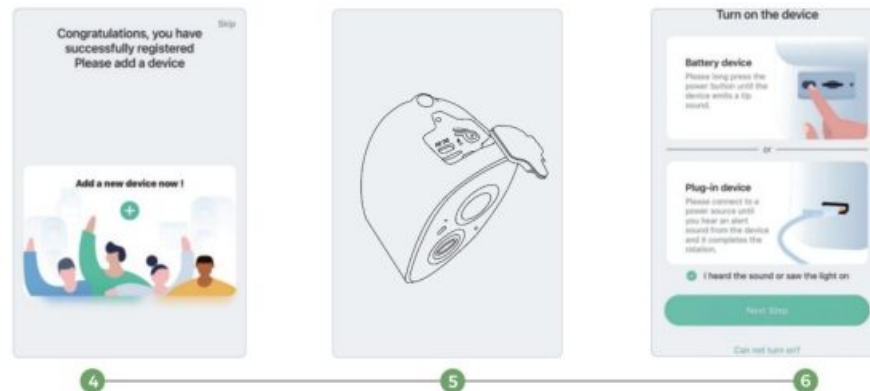
### 3.2 Connect to Wi-Fi

Ensure your smartphone is connected to your home Wi-Fi.

**Note:** The smart bird feeder only supports 2.4 GHz Wi-Fi networks with strong wall penetration capability.



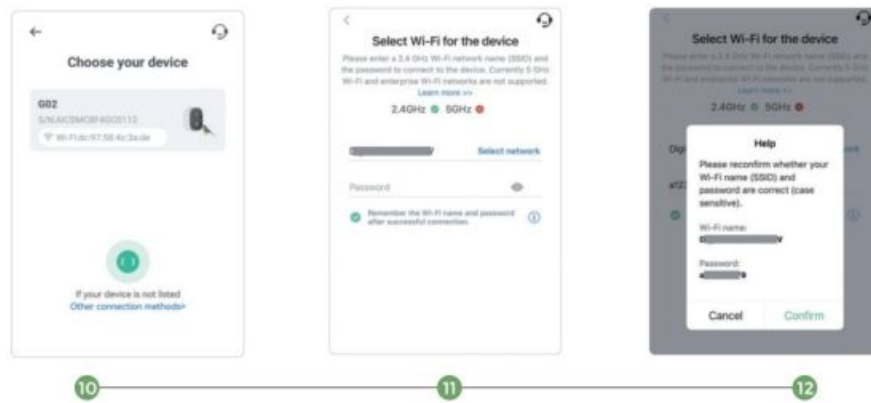
1. Open the app and input your user name, country, email address. Check and agree to the User Agreement, then click 'Next Step'. (For a better experience, allow all permissions to avoid missing any notifications.)
2. You will get an email with a verification code for account confirmation. Enter the code and click 'Next Step'
3. Set the login password and re-enter it to confirm. Click "Next Step". (For account safety, the password needs to be a combination of at least 8 characters of upper case and lower case letters.)



4. Click "Add a new device now" on the VicoHome App
5. Follow the instructions on the app to turn on the camera: Long press the power button for 3s. The indicator light will turn solid blue. Double click the power button to enter network configuration mode (listen for the prompt tone).
6. Listen to the 'ding dong ding dong' sound. After hearing the sound, click 'I heard the sound or saw the light on' in the app. Then, click 'Next Step'



7. For quick connection, please follow the instructions to open the Bluetooth settings.
8. At this point, the phone enters the state of searching for smart bird feeder.
9. After hearing 'ding dong ding dong', check "I heard the beeping sound" and click 'Next Step'

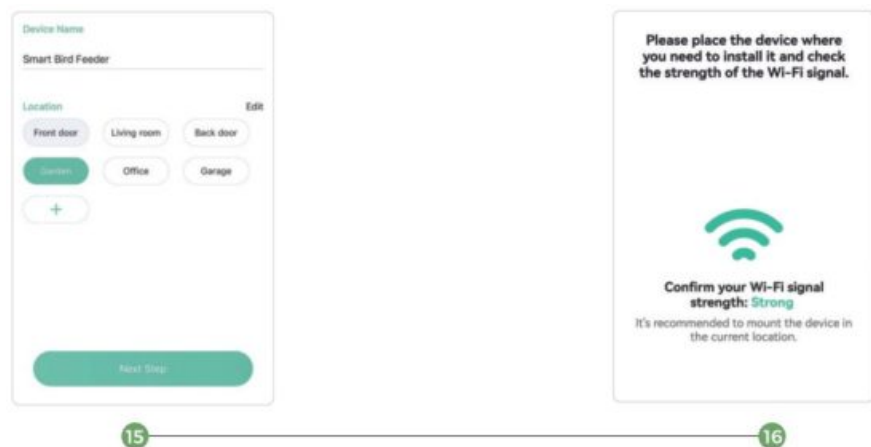


10. Select the smart bird feeder you need to connect.
11. Enter the WiFi name and WiFi password you want to connect to, check "Remember the Wi-Fi name and password after successful connection", and click "Next Step".
12. Confirm the Wi-Fi name and password.

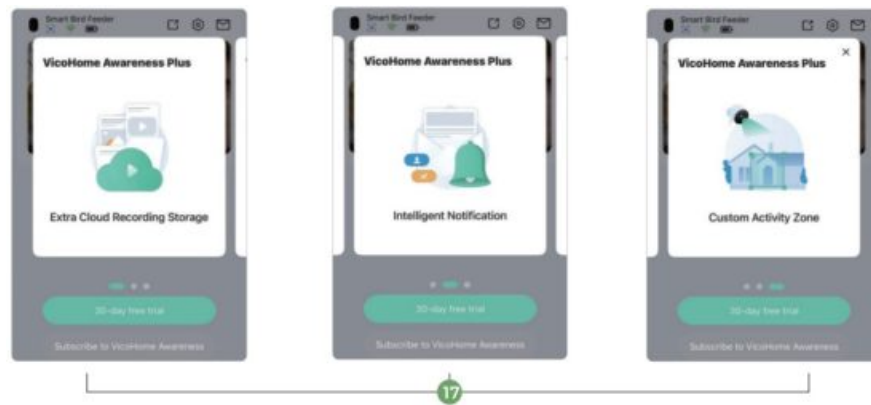


13. Click 'Connect' to connect device hotspot.
  14. When connecting, please wait patiently for 15 seconds, then you will hear a sound "Wi-Fi Connected".
- Note:** if the smart bird feeder cannot be located by Bluetooth a QR code will appear. Scan the QR code at the lens of the camera to connect.

### APP Connection & Cloud Storage



15. Set a name and location for smart bird feeder.
16. Finally you will be informed of the current Wi-Fi network status. When the signal is weak, adjust the router or bird feeder position.



17. After connecting, you'll get a 30-day free trial for premium cloud storage. After that, subscribe to a plan that suits you, or choose a 3-day free loop storage option.

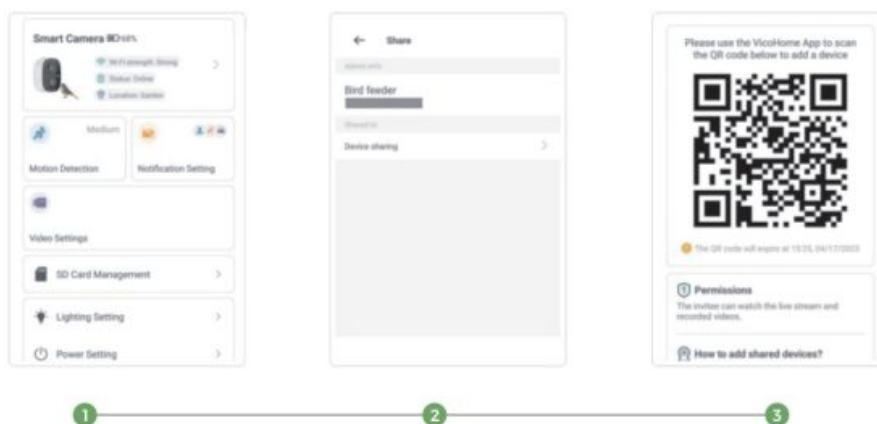
### 3.3 Connection Troubleshooting

- No Power/Connection:** Check the power cord, solar panel connection, and Wi-Fi signal.
- Camera Unresponsive:** Try restarting the camera using the reset button. If the problem with app still exists, please contact us via the VicoHome app.
- Wi-Fi Error:** When you hear 'WiFi Password Error', please check whether the Wi-Fi password you entered in the app is correct.
- Wi-Fi Not Found:** please check that you selected the correct Wi-Fi name. Place the device near the Wi-Fi router and ensure that the router is powered off. Please note that 5Ghz Wi-Fi cannot be located by the device.
- Authentication error:** please ensure that your Wi-Fi network is not an enterprise-level Network. The device supports only networks with security below WPA-2.
- Retrieving IP time out:** It indicates that the number of devices connected to the router has reached the maximum. Please remove some of the connected devices that are not commonly used or restart the router to clear the unconnected devices. You may even need to contact the router administrator.
- Cloud service connection fail:** It could be caused by network disconnection. Please ensure that the network connection is normal and try to temporarily turn off the firewall.

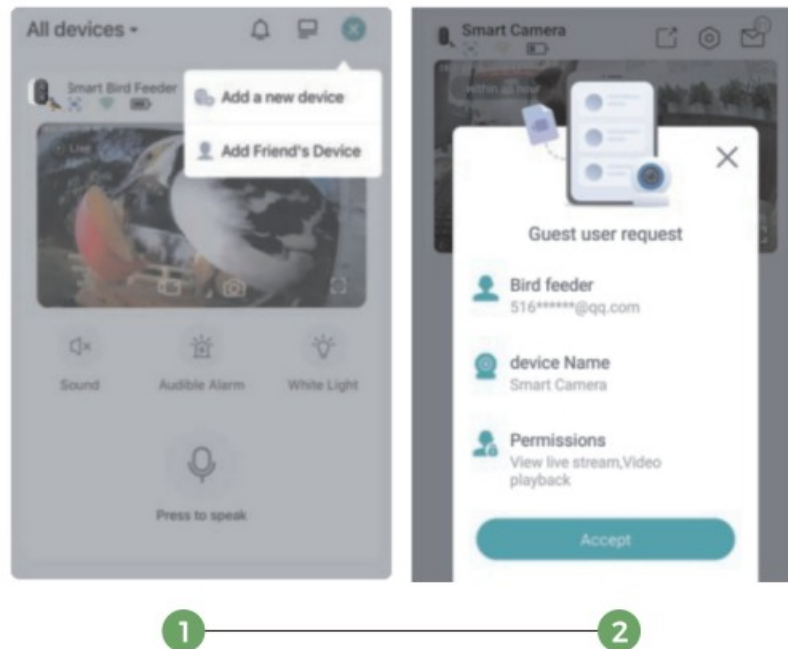
### APP Connection

#### 3.4 Share the camera

Only the admin user who has bound the camera for the first time can share and set up the camera, while other members (up to three members) can only view the live video or video playback feature of the camera.

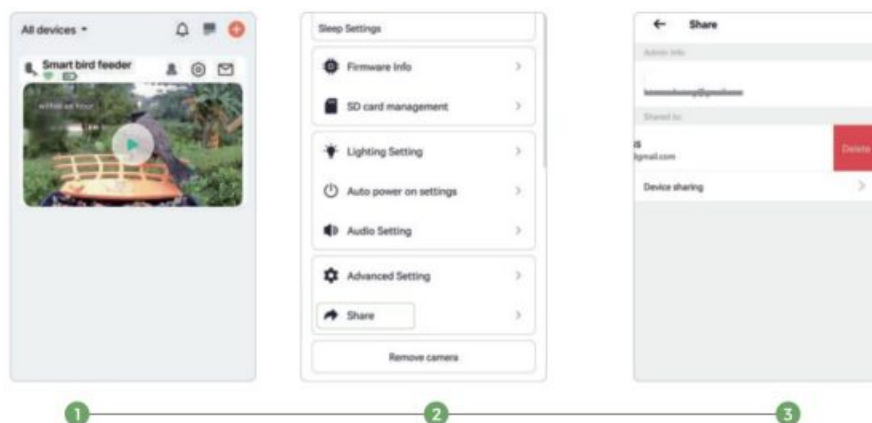


**For the admin user of the camera,** find the camera you wish to share on the app home page or camera settings screen, then click the share button and enter the share page. Click "Device Sharing" to generate a shared QR code



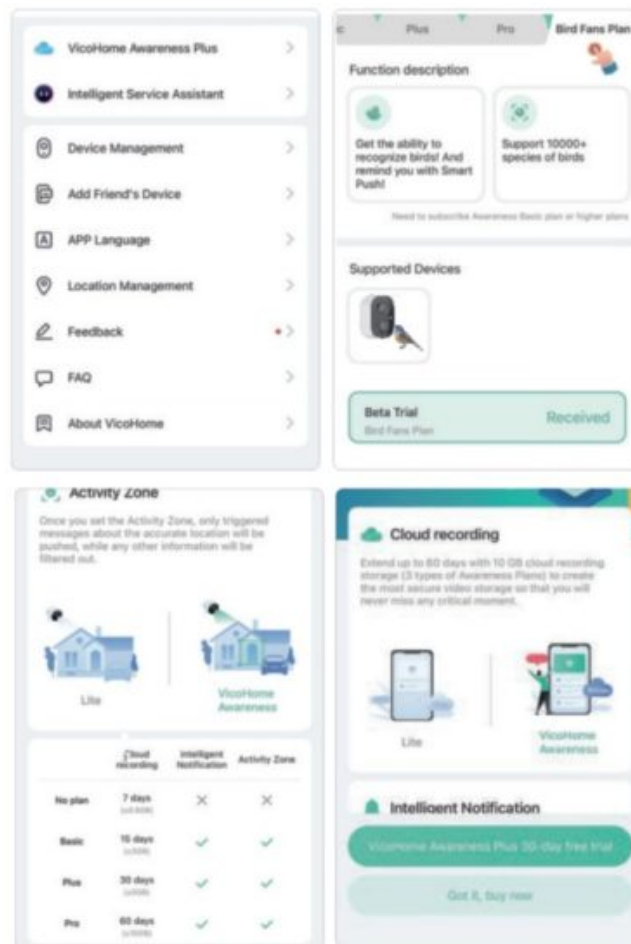
**For users who need to be shared with,** click “+” on the homepage and select “Add Friend’s Device” to enter the scan code page.

After the shared user successfully scans the QR code on the admin user’s mobile phone, the admin user will receive a confirmation notification, then click “Accept” to complete the camera sharing.



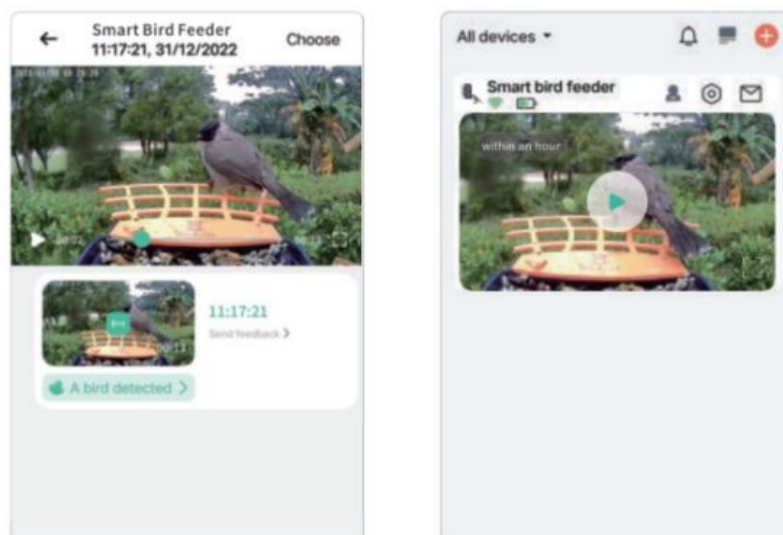
**if you want to delete shared friend devices,** please go to the sharing page and select the friend account you want to delete. Swipe left and click the delete button.

### 3.5 AI Bird Identification

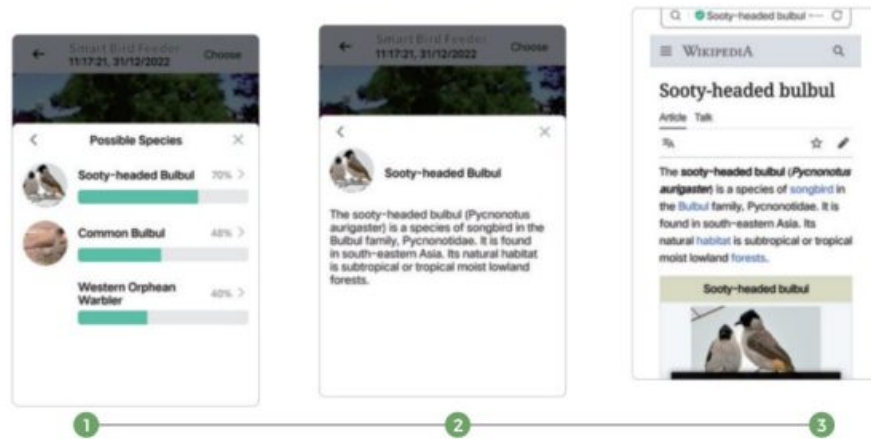


1. Click 'User' in the app's lower right corner, select 'VicoHome Awareness Plus' to activate 30-day free trial including the 'Bird Fans Plan' with 10,000+bird species identification.

**Note:** The most up-to-date information can be found through the app.Monthly subscription is required after the 30-day free trial.



2. When the camera detects a bird, it will notify you that a bird has been detected.



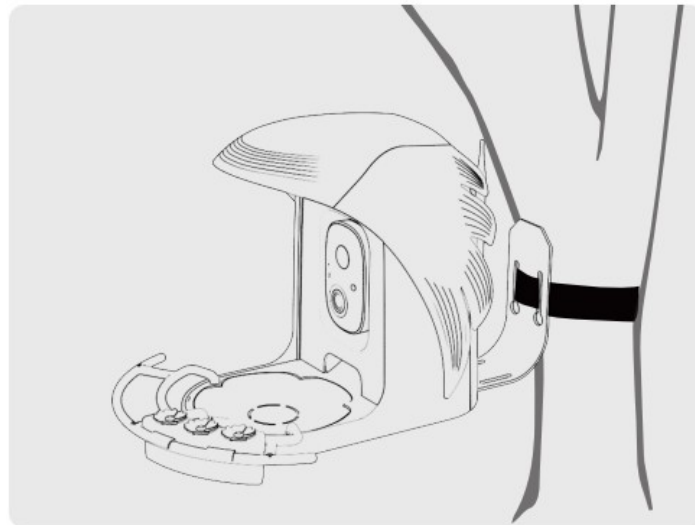
3. Click on 'A bird detected' to identify the bird species.

## INSTALLATION

### Important Tip: Check Wi-Fi Strength Before Mounting

Before mounting your smart bird feeder, make sure it has a strong Wi-Fi signal. The camera works best within 50 feet of your router. Use the Wi-Fi signal strength indicator in the app to optimize placement. Check the Wi-Fi strength at your chosen location to ensure it's reliable enough. This will prevent any connectivity issues later on.

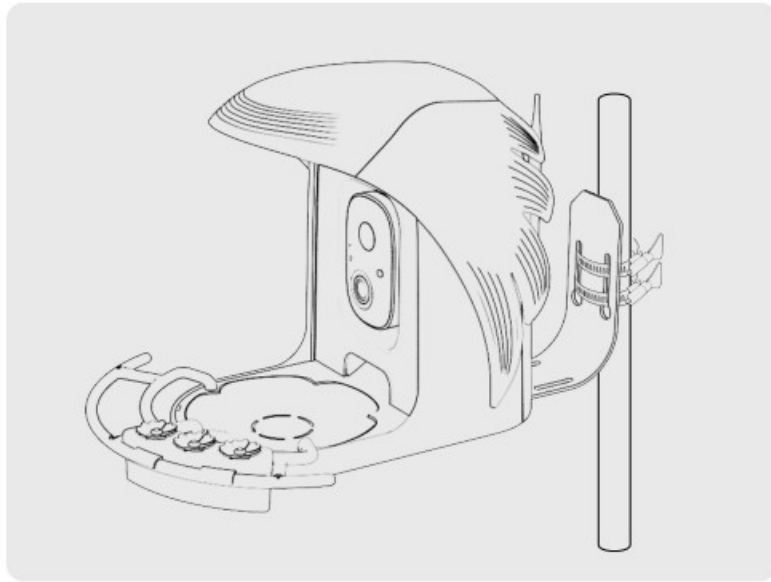
#### 4.1 3-ways to install smart bird feeder



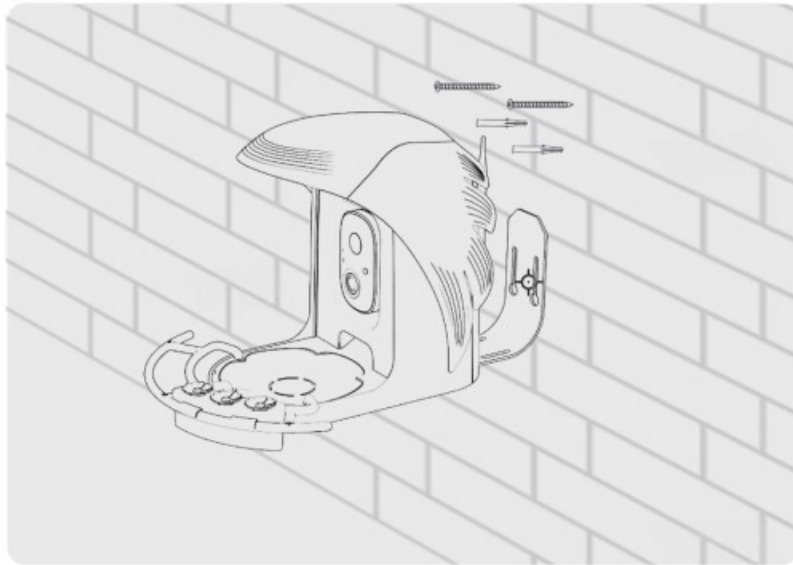
#### Tree Installation:

Wrap the strap around the tree branch, thread it through the bracket, and tighten.



**Pole Installation:**

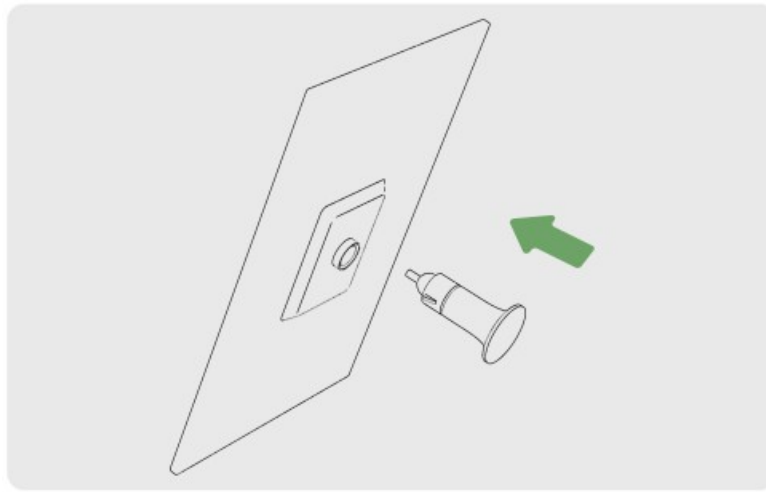
Mount the camera bird feeder to your pole with provided metal hose clamps.

**Wall Installation:**

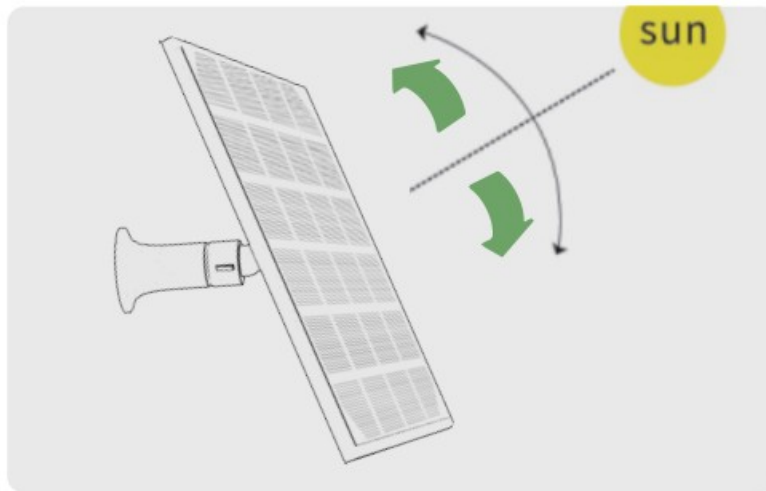
Drill holes on your wall (or a sturdy surface), install anchors and secure the bracket with provided screws.

**Note:** When installed on a wall or tree, use the drilling tool to punch holes according to the hole distance of the base. Screw the anchors into the holes, and then connect the solar panel bracket to the anchors with screws. (The anchors and screws used here are all in the Solar Panel Kit)

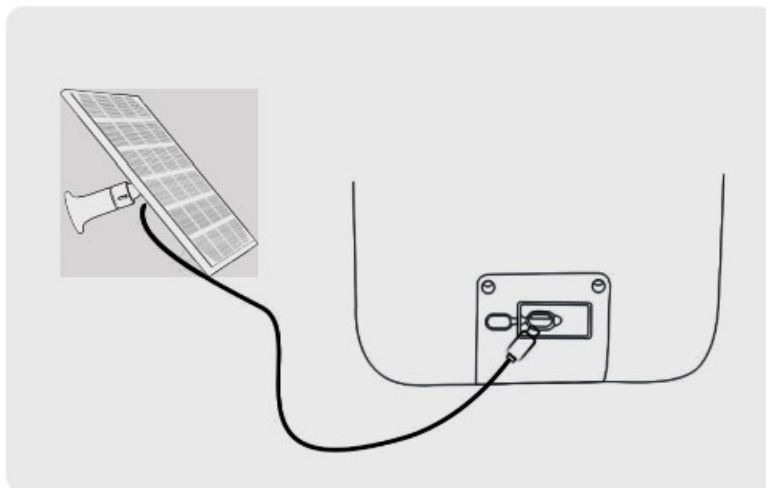
**4.2 Install The Solar Panel**



1. Slot the solar panel into the bracket and make sure it's secured.



2. Loosen the adjusting control on the bracket, then adjust the solar panel's angle to receive direct sunlight. Once you've found the ideal position, retighten the adjusting control to secure your setting.



3. Connect the solar panels to the charging port of the bird feeder with the equipped 118.11 inches Type-C charging cable.

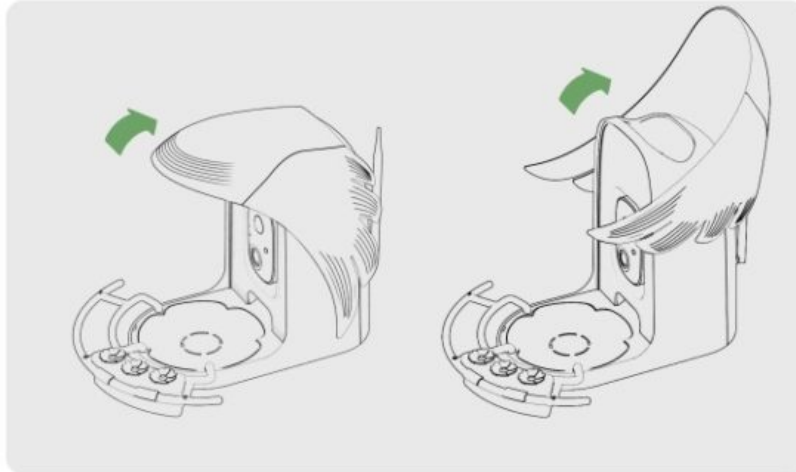
#### 4.3 Important Safety Information



- Ensure the bird feeder is securely installed to prevent it from falling.
- Ensure the bird feeder cover is closed tightly.
- Mount the feeder out of reach of children and pets.
- Do not install near power lines or other hazards.

## FILL SEEDS

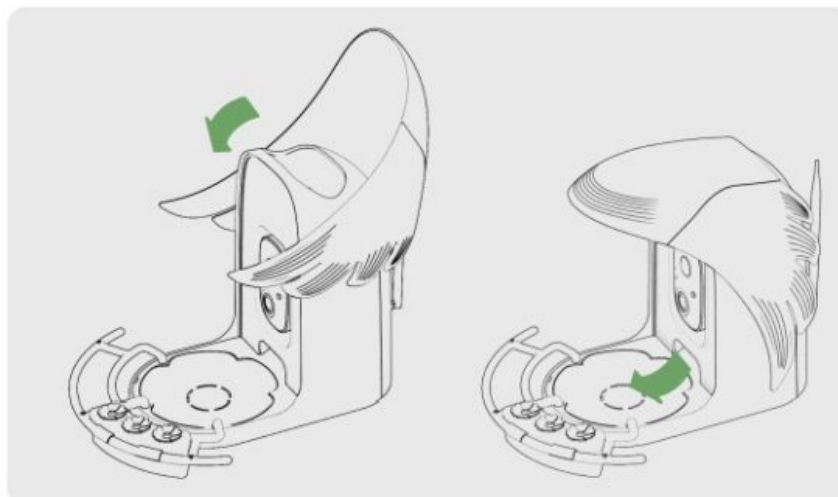
### Fill-in Bird Seeds



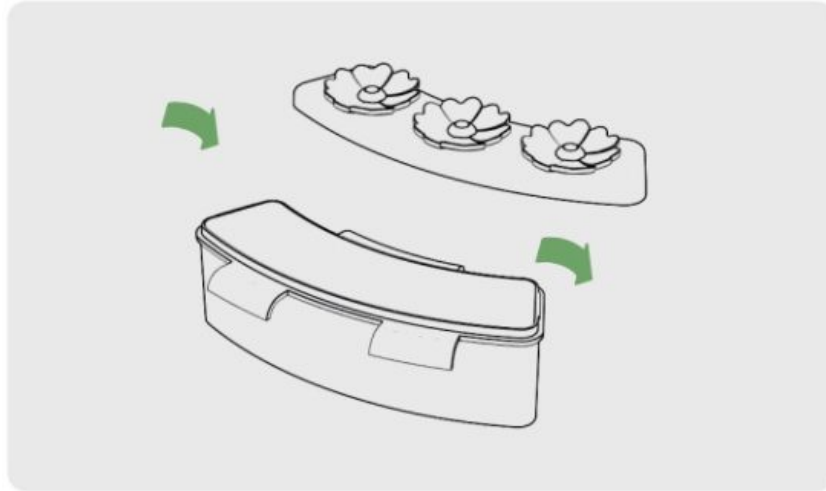
1. Open the Bird Seed Container: Lift the front of the cover backward.



2. Refill the Bird Seeds: Use the provided measuring jug to fill in.



3. Close and Secure: Close the cover and press firmly until you hear a clicking sound.

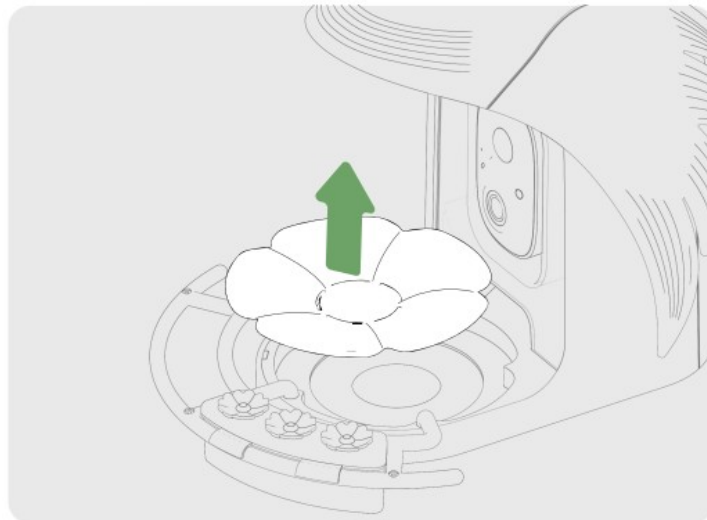


4. Refill the Hummingbird Feeder: Fill in hummingbird nectar, or remove the cover to use the container to fill in fresh water.

It's important to close tightly to prevent from squirrels.

**Tip:** Providing fresh water daily is essential for birds to process all the food they eat and maintain their energy levels. By offering access to both food and fresh water, you'll encourage birds to visit your feeder more frequently, as they'll be able to stay healthy, energized, and satisfied.

#### 4.3 How to clean



Regularly wipe the camera lens with a soft, dry cloth. Do not wash the camera or any of its components. They are water resistant, not water-proof.

Periodically empty and clean the bird seed container with a mild detergent solution.

Push upward from the base of the feeder, remove the flower-shaped bird seed tray to clean regularly. The bottom of the seed tray adopts a snap-on structure, making it removable and detachable to easily clean.

#### Warning

**NOTE:** This equipment has been tested and found to comply with the limits for a Class B digital device, pursuant to part 15 of the FCC Rules. These limits are designed to provide reasonable protection against harmful interference in a residential installation. This equipment generates uses and can radiate radio frequency energy and, if not installed and used in accordance with the instructions, may cause harmful interference to radio communications. However, there is no guarantee that interference will not occur in a particular installation. If this

equipment does cause harmful interference to radio or television reception, which can be determined by turning the equipment off and on, the user is encouraged to try to correct the interference by one or more of the following measures:

- Reorient or relocate the receiving antenna.
- Increase the separation between the equipment and receiver.
- Connect the equipment into an outlet on a circuit different from that to which the receiver is connected.
- Consult the dealer or an experienced radio/TV technician for help.
- The antennas used for this transmitter must be installed to provide a separation distance of at least 7.874 inches from all persons and must not be co-located for operating in conjunction with any other antenna or transmitter.

FCC (USA) 15.9 prohibition against eavesdropping except for the operations of law enforcement officers conducted under lawful authority, no person shall use, either directly or indirectly, a device operated pursuant to the provision of this part for the purpose of over hearing or recording the private conversations of other unless such use is authorized by all of the parties engaging in the conversation. Changes or modifications not expressly approved by the party responsible for compliance could void the user's authority to operate the equipment.

**FCCID: 2AY58-V1-VN-DB01**

#### **IC Caution:**

This device contains licence-exempt transmitter(s)/receiver(s) that comply with Innovation, Science and Economic Development Canada's licence-exempt RSS(s).

Operation is subject to the following two conditions:

This device may not cause interference. This device must accept any interference, including interference that may cause undesired operation of the device.



**Welcome to PerchMe, where every perch is a story every story is a step toward a better world**

In the heart of every nature enthusiast, there's a perch where dreams take flight, and at PerchMe, we've crafted that very spot for the wild birds that grace our skies. Our story is not just about bird feeders; it's about creating a sanctuary where humans and nature meet in harmony.

#### **Sustainability Soars**

PerchMe is not just about observing birds; it's about protecting them and the environment they inhabit. We are dedicated to sustainability, ensuring that our products are environmentally friendly and contribute positively to the ecosystem. By choosing PerchMe, you're investing in a greener future.



#### **Community & Connection**

We believe that birdwatching is a communal activity, one that brings people together in their shared love for nature. PerchMe is more than a brand; it's a community of passionate individuals who find joy in the simple

pleasure of birdsong and the rustle of wings.

### Innovation Takes Flight

Our flagship product, the smart bird feeder with a camera, is a testament to our innovative spirit. This isn't just a feeder; it's a window into the lives of birds, allowing you to capture and share the candid moments of your avian guests. With PerchMe, birdwatching becomes an interactive experience, bridging the gap between technology and the timeless allure of nature.



### Share Your Delight with Us

Join Bird Lovers' Community to Win Prizes, Giveaways.  
Connect with Worldwide Bird Lovers.



<https://www.facebook.com/qf/1068211284426418>



@Perchme

URL: [www.perchme.com](http://www.perchme.com)

Email: [support@perchme.com](mailto:support@perchme.com)

Phone/whatsapp: 1-[781-226-8769](tel:781-226-8769)

### Documents / Resources

The cover of the manual is green with a white line drawing of the bird feeder and a bird. The text 'PerchMe Smart Bird Feeder Manual' is visible.	<p><a href="#">PerchMe G02 Smart Bird Feeder With Camera</a> [pdf] Owner's Manual G02 Smart Bird Feeder With Camera, G02, Smart Bird Feeder With Camera, Bird Feeder With Camera, Camera</p>
---	--

### References

- [User Manual](#)

## **Manuals+. Privacy Policy**

This website is an independent publication and is neither affiliated with nor endorsed by any of the trademark owners. The "Bluetooth®" word mark and logos are registered trademarks owned by Bluetooth SIG, Inc. The "Wi-Fi®" word mark and logos are registered trademarks owned by the Wi-Fi Alliance. Any use of these marks on this website does not imply any affiliation with or endorsement.