



peplink CMO AP One AX Installation Guide

[Home](#) » [peplink](#) » peplink CMO AP One AX Installation Guide 

Contents

- [1 peplink CMO AP One AX](#)
- [2 Product Usage Instructions](#)
- [3 Ceiling Mount](#)
- [4 Wall Mount](#)
- [5 Documents / Resources](#)
 - [5.1 References](#)
- [6 Related Posts](#)



peplink CMO AP One AX



Product Specifications

- Model: LoOE
- Power: 6WHSV
- Dimensions: Standard size
- Weight: Lightweight

Product Usage Instructions

Step 1: Setting Up

Place the product on a flat surface in a well-ventilated area.

Step 2: Powering On

Connect the power source and switch on the device using the power button.

Step 3: Operating the Product

Refer to the user manual for specific instructions on how to use the product efficiently.

Frequently Asked Questions (FAQ)

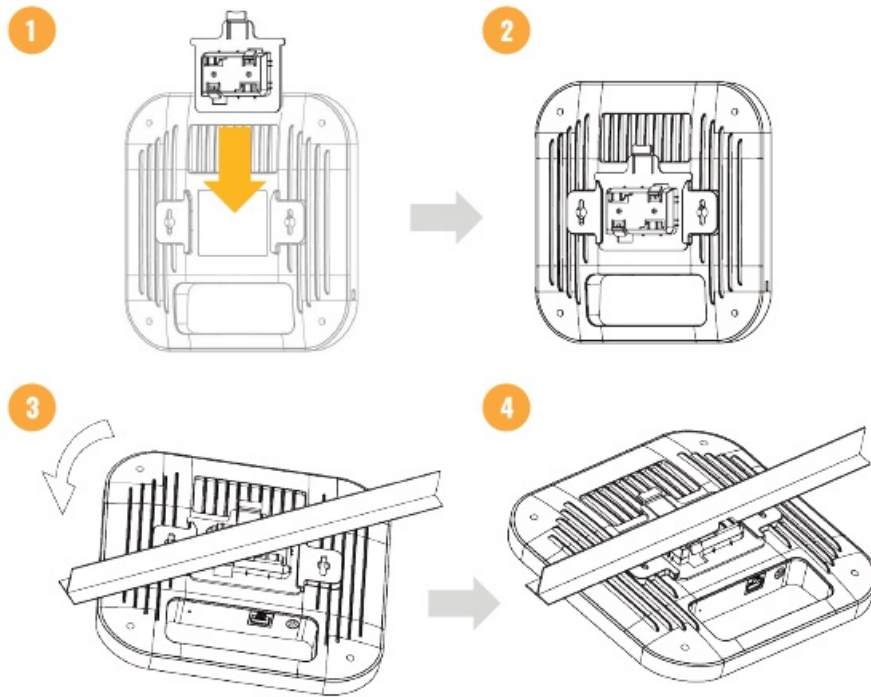
• Q: How do I clean the product?

A: Use a soft, dry cloth to clean the product. Avoid using harsh chemicals.

• Q: Can this product be used outdoors?

A: This product is designed for indoor use only.

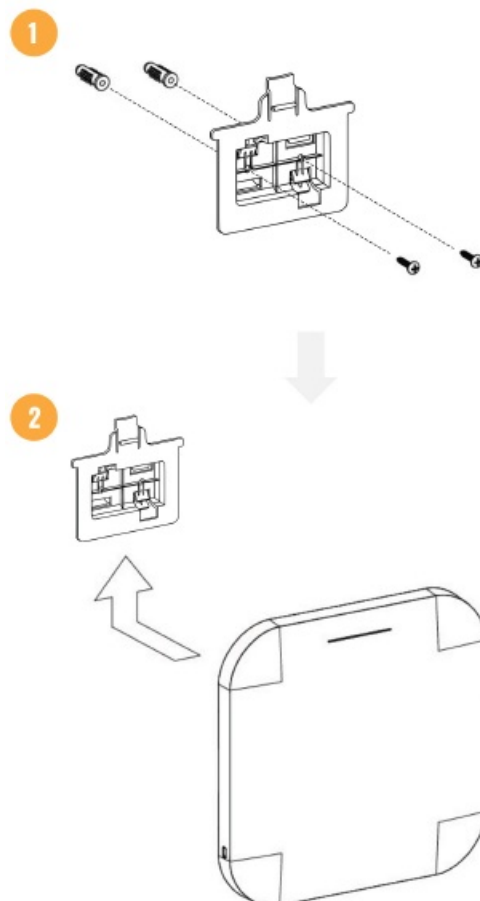
Ceiling Mount



Steps:

1. Slide the ceiling mount base into the slot on the back of the access point.
2. Position the T-Rail on the ceiling mount base as shown in image 3.
3. Secure the device by ensuring that the ceiling mount base is hooked onto the T-Rail.

Wall Mount



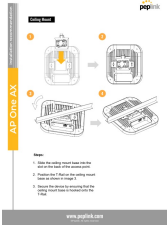
Steps:

1. Determine where the access point is to be placed and mark the location for the two mounting holes.
2. Use the appropriate drill bit to drill two 8.1mm diameter and 26mm deep holes at the markings and hammer the anchors into the openings.
3. Screw the anchors into the holes until they are flush with the wall. Position the mounting bracket over the anchors and secure it to the wall by screwing the included screws into the anchors.
4. Place the access point against the wall and slide it onto the mounting bracket.

www.peplink.com

© Peplink, All rights reserved.

Documents / Resources

	<p>peplink CMO AP One AX [pdf] Installation Guide CMO, CMO AP One AX, CMO, AP One AX, One AX, AX</p>
---	--

References

- [User Manual](#)

[Manuals+.](#) [Privacy Policy](#)

This website is an independent publication and is neither affiliated with nor endorsed by any of the trademark owners. The "Bluetooth®" word mark and logos are registered trademarks owned by Bluetooth SIG, Inc. The "Wi-Fi®" word mark and logos are registered trademarks owned by the Wi-Fi Alliance. Any use of these marks on this website does not imply any affiliation with or endorsement.