

**Peousild
A18 Wireless
CarPlay Adapter
Android Auto
Adapter**



Peousild A18 Wireless CarPlay Adapter Android Auto Adapter User Manual

[Home](#) » [Peousild](#) » Peousild A18 Wireless CarPlay Adapter Android Auto Adapter User Manual 

Contents

- [1 Peousild A18 Wireless CarPlay Adapter Android Auto Adapter](#)
- [2 Compatibility Note](#)
- [3 How to use](#)
- [4 LED Light Description](#)
- [5 FQA](#)
- [6 Online update](#)
- [7 Documents / Resources](#)
 - [7.1 References](#)
- [8 Related Posts](#)

Peousild

Peousild A18 Wireless CarPlay Adapter Android Auto Adapter



Please read the manual carefully before use Recommend keeping this manual for future reference

Compatibility Note

- Please make sure your car supports wired CarPlay/Android Auto.
- Required iPhone 6 or later iPhone models with iOS 10 or above for wireless carplay function.
- Required an Android smartphone that supports the latest Android Auto function and with Android 11 or higher of the Android operating system for wireless Android Auto function.

How to confirm if your car has Apple-wired CarPlay or Android Auto function?

Method 1:

Connect your iPhone/Android smartphone to your car by USB data cable and if there is a Carplay or Android Auto icon in the car stereo menu.



Method 2:

Check the compatible list below or check with your car manufacturer to see if your car has this capability: Check out the website for supported car models



<https://www.apple.com/ios/carplay/available-models/>

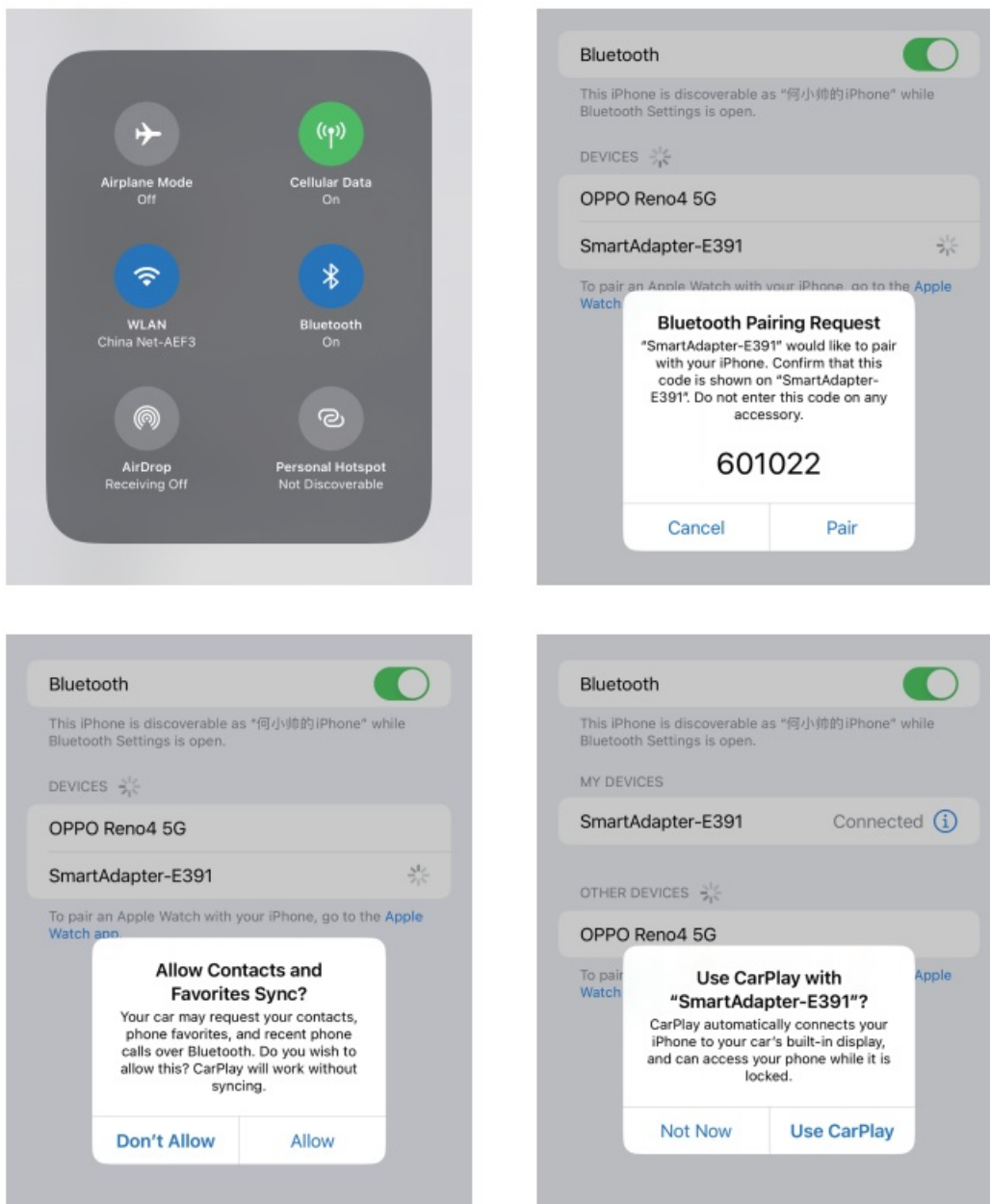


<https://www.android.com/auto/Compatibility#Compatibility-vehicles>

- <https://www.apple.com/ios/carplay/available-models/>
- <https://www.android.com/auto/Compatibility#Compatibility-vehicles>

How to use

1. Start the car and wait for the car to head until the system is loaded.
2. Connect the Wireless Carplay Android Auto Adapter to the USB-A or USB-C port in your car. please be sure to plug the adapter into the port that is for wired Apple CarPlay or Android Auto.
3. Open WIFI and Bluetooth on your iPhone/Android samrtphone and find the Bluetooth named “smartAdapter *****”, Click on “Pair”; Click on “Allow”; Click on “Use CarPlay” or “Use Android Auto”.



4. You are ready to enjoy wireless CarPlay or wireless Android Auto.

LED Light Description

- Cyan status: Power on indicator
- Green status:
 1. Carplay connecting (green light fast flashing)

2. Carplay connected (green light keeps on)
- Blue status:
 1. Android connecting (Blue light fast flashing)
 2. Android connected (Blue light keeps on)

Please note

1. The Wireless Carplay Android Auto Adapter working principle uses Bluetooth to establish a pairing between the iPhone/ Android smartphone and the vehicle, then switches to using WiFi to maintain the wireless connection. After the Bluetooth pairing is successful, the iPhone/Android smartphone WiFi will automatically connect to the adapter's WiFi, and then disconnect the Adapter Bluetooth connection by default for CarPlay or automatically connect to your vehicle Bluetooth by default for Android Auto.
2. Please ensure the Wireless CarPlay Android Auto Adapter power indicates light is on.
3. Please ensure that your car models support wired CarPlay or Android Auto.

Package list

- 1x Wireless Adapter
- 1x USB Cable(Type-C to A)
- 1x USB Cable(Type-C to C)
- 1x 3M Sticker
- 1x User Manual

FQA

What is the WiFi password for the Wireless CarPlay Adapter?

We need to connect the Bluetooth, not Wi-Fi. After Bluetooth matching is successful, WiFi will automatically connect. So no need Wi-Fi password. Make sure your Wi-Fi is turned on and unoccupied when pairing.

After pairing the Android Auto adapter, can not start the Android Auto function or compatible/ can not recognize the USB...

1. If your car has used the Android Auto function for the first time, please use your data cable to connect your phone to activate Android Auto through a wired method.
2. Please make sure that Android Auto on your Android phone is the latest version. If not, please log in to your Google Play account to update to the latest version.
3. Please turn off the Bluetooth of your phone and enter the mobile application management to search auto to clear the auto cache. After the cleaning is completed, Restart the adapter and reconnect to Bluetooth.

When using the Wireless Carplay Android Auto Adapter whether Mobile Phone can use other Internet WiFi.

When enjoying the Wireless Carplay Android Auto Adapter function, the phone's WiFi will be occupied by the adapter, So you can not use other internet at the same time, You only can use your phone SIM card internet.



Online update

- The adapter works properly, it means the current version is suitable for your car. It is not recommended to update the firmware.
 - Only try this solution when the problem you cannot solve from the "FAQ".
1. Power up the adapter.
 2. Connect the adapter's WiFi the password is "12345678"
 3. Open the web browser enter "192.168.1.101" to enter the settings page and click "Update" for the CarPlay function.
 4. For Android auto, Please Click "Switch P2P" Then Click "OK".
 5. Return to WiFi Connect, Find Wi-Fi Direct" option, Then connect the Available devices (Smart Adapter-****)
(This step is for reference only for Android phone users, if use an iPhone to update the firmware, please ignore the Wi-Fi Direct step).
 6. Return to the browser's page Click "Update" (PS: the signal light of will flash when it reaches 70%, and it will return to normal after successful).
 7. On the same page, you could also fill in the car brand, model, years, and more details, next tap "Submit to report the issue. Our engineers will record your problem and research possible solutions.

×

https://192.168.1.101

...

System version information

?

Version number202404021037CA

Config

Audio stream modeCD(44100)

Start-up delay0s

Wifi channelUNII-1/36/5.180GHz

Background ModeNo

GPSPS

Factory data reset

Problem description

Automobile brandHYUNDAI MOBIS

Car nameSQC

Automobile era320.17.1

Contact EmailPlease enter email

Detailed problem description

Please enter a description of the problem


Submit

Online updates

upgrade

Please select a software version

Documents / Resources

	Peousild A18 Wireless CarPlay Adapter Android Auto Adapter [pdf] User Manual SD100, A18, A18 Wireless CarPlay Adapter Android Auto Adapter, A18, Wireless CarPlay Adapter Android Auto Adapter, CarPlay Adapter Android Auto Adapter, Adapter Android Auto Adapter, Android Auto Adapter, Auto Adapter, Adapter
---	---

References

- [User Manual](#)

Manuals+. Privacy Policy

This website is an independent publication and is neither affiliated with nor endorsed by any of the trademark owners. The "Bluetooth®" word mark and logos are registered trademarks owned by Bluetooth SIG, Inc. The "Wi-Fi®" word mark and logos are registered trademarks owned by the Wi-Fi Alliance. Any use of these marks on this website does not imply any affiliation with or endorsement.