



PENTAIR INTELLISYNC Monitoring and Control System User Guide

[Home](#) » [Pentair](#) » PENTAIR INTELLISYNC Monitoring and Control System User Guide 

Contents

- [1 PENTAIR INTELLISYNC Monitoring and Control System](#)
- [2 Download Pentair Home App](#)
- [3 Sign Up, Create an Account and Login](#)
- [4 Connecting your Mobile Device to your home network](#)
- [5 Add a Device](#)
- [6 Dashboard Controls](#)
- [7 CONTACTS](#)
- [8 Documents / Resources](#)
 - [8.1 References](#)
- [9 Related Posts](#)



PENTAIR INTELLISYNC Monitoring and Control System



Download Pentair Home App



Pentair Home is a free app is available for iPhone® , iPad® and iPod touch® mobile digital devices at iTunes® or at Google Play® for all Android™ devices.

Note: Minimum OS requirements: Apple® (version IOS 11), Android (version 6).

Download the IntelliSync Pentair Home App User's Guide from www.pentair.com

iOS mobile: Scan the bar code or go to the Apple Store to download the Pentair Home app.



Android mobile: Scan the bar code or go to the Goggle Store to download the Pentair Home app.



Sign Up, Create an Account and Login



1 Email

joe.smyth@pentair.com

Password

.....

... Strong

- ✓ At least 8 characters
- ✓ 1 upper case letter
- ✓ 1 number
- ✓ 1 special character

☒ I have read the **Privacy Policy** and agree to the **Terms and Conditions**.

☒ I would like to receive product updates and special offers.

CREATE AN ACCOUNT

2

Log In

Skip the Typing

We can email you a magic sign-in link that will log you into the app without typing in your password.

LOG IN BY EMAIL

USE PASSWORD

Don't have an account? **SIGN UP**

3

Create profile

Email

joe.smyth@pentair.com

First Name

joe



Last Name

smyth



Company Name

Pentair

Country

United States

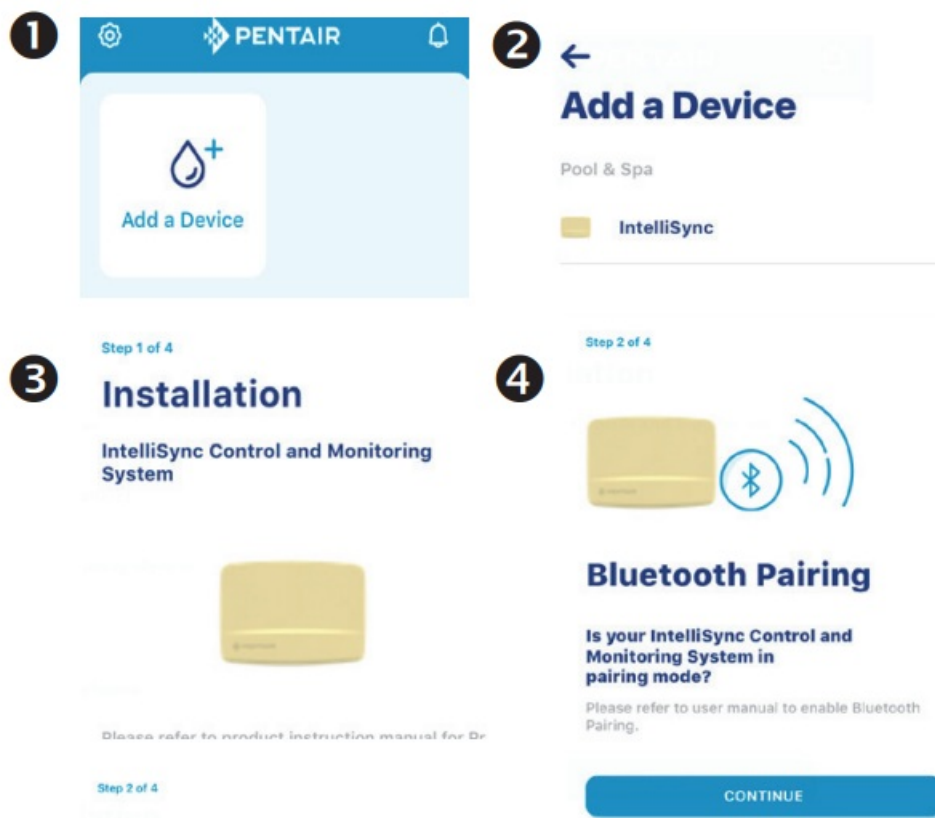


1. Open the Pentair Home app icon on your mobile device.
2. From the Login page, tap Sign Up to create a new account. If you have already registered: Enter your Email address and password.
3. On the SIGN UP page enter your Email address and a strong Password. All Green check marks meets the strong password requirements (! # \$ & ' () * + comma ? : = ? @ [] space are acceptable password special characters).
4. Tap the check box next to "I have read the Privacy Policy and agree to the Terms and Services".
5. Tap CREATE AN ACCOUNT. Tap SEND VERIFICATION to send a verification Email to your registered Email account. You will receive an Email from no-reply@verificationemail.com. Select Verify Email Address to confirm your account. A message is displayed indicating your registration has been confirmed. Tap Login (top right of screen).

The Bluetooth® word mark and logos are registered trademarks owned by the Bluetooth SIG, Inc. and any use of such marks by Pentair Management Company is under license. Other trademarks and trade names are those of their respective owners. iPhone®, iPad®, iPod touch®, Apple® App Store® and iTunes® are registered

trademark of Apple Inc. in the United States and/or other countries. Google Play® and Android® are registered trademarks of Google LLC in the United States and/or other countries.

Connecting your Mobile Device to your home network



1. **Dashboard:** After login: Tap Add a Device (water drop icon) then tap IntelliSync to add this device to your mobile device.
2. **IntelliSync™ unit:** Slide the top cover upward. Press and hold the MODE button for 3-seconds until the CONNECTION LED is blinking. IntelliSync is ready for Bluetooth® wireless technology pairing.
3. **Turn on Bluetooth on your mobile device:** On the Add a Device page, tap IntelliSync. The Installation (IntelliSync) page displays. Tap CONTINUE. Bluetooth Pairing page displays.
4. Tap CONTINUE. SCANNING... is displayed. Tap PNRXXXXXX (Device ID identifies IntelliSync). Tap CONTINUE. IntelliSync (device) is now paired with your mobile device.
5. Connect to WiFi 2.4 GHz Router: Tap on the name (SSID) of your home network and enter the password. Tap CONTINUE to connect to your home network. "WiFi Data Sent" is displayed. Enter your home network password, then tap CONNECT. Installation Completed displays. Tap CONTINUE. The Profile page displays. Tap the location of your pool then tap SAVE.
6. Tap CONTINUE when "Installation Completed" is displayed. The IntelliSync Control and Monitoring System profile and location page is displayed. IntelliSync: Select the street Address where your IntelliSync Control and Monitoring System is located. You can also add another location on the displayed map. MY DEVICES page displays. Continue to Add a Device.



5 Select Your IntelliSync Control and Monitoring System

PNR01ESC1000076
08A

SCANNING...

7 Connect Your Device to WiFi



SELECT WIFI NETWORK

Pentair-Guest

6

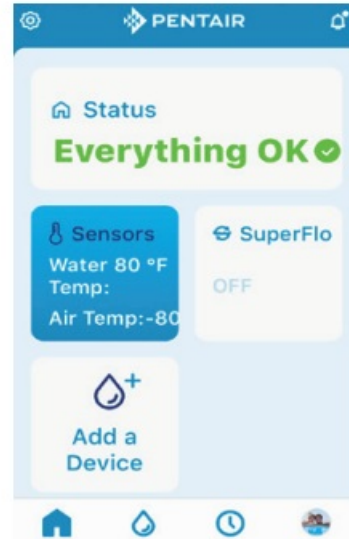
Step 2 of 4



Bluetooth Pairing

We are pairing your IntelliSync Control and Monitoring System.

8



Dashboard

1. **My Devices:** Tap the Product Device name (IntelliSync) to display the Add Devices page.
2. **Add Devices:** Tap the device name to connect the selected device (IntelliFlo®, SuperFlo® VS pumps).
Supported Devices (see Installation Guide for complete list): For one body of water, one IntelliSync supports two pumps (IntelliFlo and SuperFlo VS), and a water and air temperature sensor.

Dashboard Controls



- Dashboard Home page. Displays installed devices. Tap Home from other pages to return to Dashboard.



- **My Devices:** Display installed devices. Tap a device to access device settings.



- Weekly event schedules.



- Account page. Edit Profile, Notifications.



- Edit Dashboard. Also, access Settings from device pages.



- View current Alerts.

CONTACTS

- 1620 HAWKINS AVE., SANFORD, NC 27330
- (919) 566-8000 – 10951 WEST LOS ANGELES AVE., MOORPARK, CA
- 93021 (805) 553-5000
- P/N 523415.B 8/2020
- © 2020 Pentair.
- www.pentair.com
- **Technical Support:** (800) 831-7133



Documents / Resources



[PENTAIR INTELLISYNC Monitoring and Control System](#) [pdf] User Guide
INTELLISYNC, Monitoring and Control System, Control System, Monitoring System, System, I
NTELLISYNC Monitoring System

References

-  Pentair

[Manuals+](#).