



PENTAIR IN-FF-500-SG-QC-4 OmniFilter Inline Filter Refrigerator and Icemaker Instruction Manual

[Home](#) » [Pentair](#) » PENTAIR IN-FF-500-SG-QC-4 OmniFilter Inline Filter Refrigerator and Icemaker Instruction Manual 

Contents

- [1 PENTAIR IN-FF-500-SG-QC-4 OmniFilter Inline Filter Refrigerator and Icemaker](#)
- [2 SPECIFICATIONS](#)
- [3 Parts Included](#)
- [4 Tools and Materials Required](#)
- [5 PRECAUTIONS](#)
- [6 INSTALLATION](#)
- [7 CARTRIDGE REPLACEMENT](#)
- [8 TROUBLESHOOTING](#)
- [9 REPLACEMENT PARTS](#)
- [10 MAINTENANCE](#)
 - [10.1 IOWA RESIDENTS ONLY](#)
- [11 Contact](#)
- [12 Documents / Resources](#)
 - [12.1 References](#)
- [13 Related Posts](#)



PENTAIR IN-FF-500-SG-QC-4 OmniFilter Inline Filter Refrigerator and Icemaker



SPECIFICATIONS

- **Temperature Range:** 40–100°F (4.4–37.8°C)
- **Pressure Range:** 30–125 psi (2.1–8.62 bar)
- **Service Flow Rate:** 0.5 gpm (1.9 Lpm)
- **Dimensions:** 2.9" x 11.25" (73.66 mm x 286 mm)

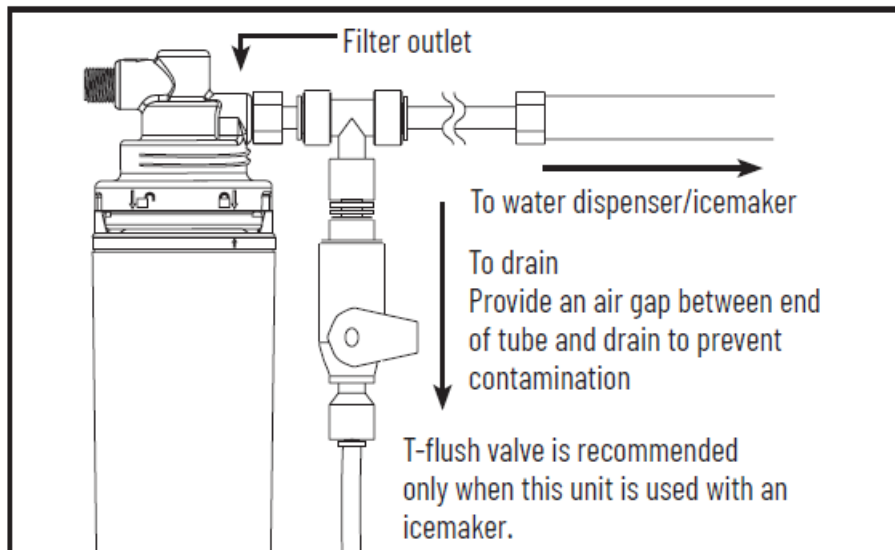
Parts Included

- Screws for mounting bracket
- 600R filter cartridge
- Filter head with built-in bracket and compression fittings

Tools and Materials Required

- Phillips screwdriver
- Towel
- File (copper tubing only)
- Pencil
- Utility knife (for plastic tubing)
- Tape measure
- Pipe cutter or hacksaw (copper tubing only)

Optional Materials



- Saddle-tap valve w/shut-off
- Shut-off valve
- 1/4-inch plastic or copper tubing, or flexible hose
- Fittings
- T-flush valve (Recommended only when used with an icemaker) See Diagram below. This valve is installed after the filter, so it can be flushed to remove carbon fines or release pressure before removing cartridge.

PRECAUTIONS

WARNING: Do not use with water that is microbiologically unsafe or of unknown quality without adequate disinfection before or after the system.

CAUTION

- Because of the product's limited service life and to prevent costly repairs or possible water damage, we strongly recommend that the bottom of all plastic housings be replaced every five years for clear and every ten years for opaque. If the bottom of your housing has been in use for longer than this period, it should be replaced immediately. Date the bottom of any new or replacement housing to indicate the next recommended replacement date.
- This filter must be protected from freezing. Failure to do so may result in cracking of the filter and water leakage.
- Turn off water supply to head without cartridge if it must be left unattended for an extended period of time.

NOTES

- For cold water use only.
- Do not use with water that is microbiologically unsafe or of unknown quality without adequate disinfection before or after the system.
- An activated carbon cartridge (Taste/Odor) will contain a small amount of carbon fines (i.e. very fine black powder). A new cartridge, after installation, should

- Make certain that installation complies with all state and local laws and regulations.
- The contaminants or other substances removed or reduced by the selected cartridge are not necessarily in your water. Ask your local water municipality for a copy of their water analysis, or have your water tested by a reputable water testing lab.
- After prolonged periods of non-use (such as during a vacation) it is recommended that the system be flushed thoroughly. Let water run for 2-3 minutes before using.
- The filter cartridge used with this system has a limited service life. Changes in taste, odor, color, and/or flow of the water being filtered indicate that the cartridge should be replaced.

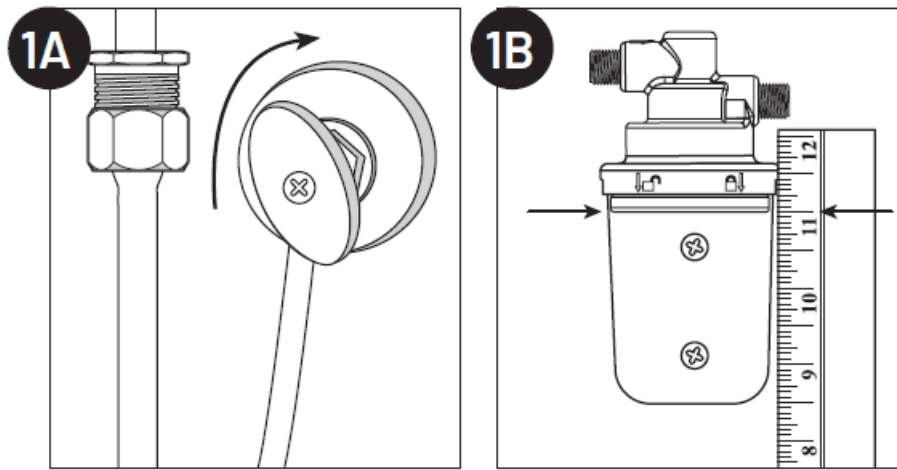
INSTALLATION

- Spent adsorption media will not be regenerated and used.
- If adsorption media is affected by chlorine, water supply should be treated to remove chlorine prior to entering filter.
- For standard installation on 1/4-inch copper, plastic or flexible hose cold water line.
- Please read all instructions and precautions before installing and using your Quick Change Refrigerator and Ice maker Filtration System.
- Numbered diagrams correspond with numbered steps.
- Instructions refer to standard installation on existing water line to refrigerator. Before installation, make sure there is enough slack in existing water line to allow refrigerator to be moved out from the wall.

Mounting the Filter System

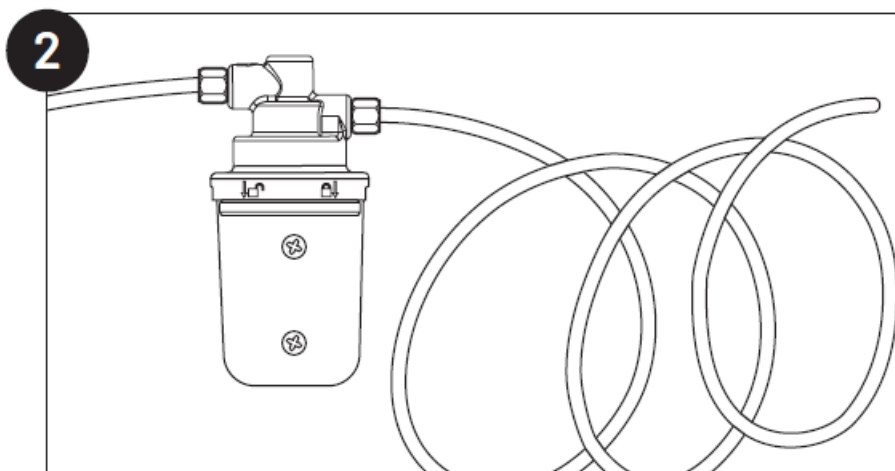
- Turn off the cold water supply to the refrigerator and dispense the water from the refrigerator door until water flow stops to release the pressure in the pipes before starting installation. Place a tray or towels under the cold water line to catch the excess water after the pipes are cut.
- Before starting installation, turn off the icemaker in the refrigerator and store the ice cubes in a clean container in the freezer.
- Select location under sink, in basement or near refrigerator where filter is to be mounted.
 - **NOTE:** Filter should not be more than 3 feet from the appliance.
 - **NOTE:** Allow 1 1/2 " (38 mm) clearance below housing or 11 " below filter head to enable filter cartridge changes.
 - **CAUTION:** Filter head should be mounted on stud or firm surface. The mounting bracket will support the weight of the filter and help prevent strain on the cold water line.
 - **WARNING:** DO NOT screw mounting bracket directly onto the refrigerator.
- Filter head should be mounted in vertical position. Use mounting bracket as a template to mark screw locations. Mount filter head in marked location using screws.

Cutting or Disconnecting the Tubing



Use a 7 to 8-foot coil (3 coils, approximately 10-inch diameter) of plastic, copper or flexible hose between the outlet of the filter and the refrigerator. Determine the length of plastic, copper or flexible hose needed to connect the inlet and outlet of filter. Using a pipe cutter or hacksaw for copper tubing or utility knife for plastic, cleanly cut tubing or disconnect flexible hose from refrigerator. Leave a minimum of 2 inches (51 mm) of pipe after shut-off valve in case pipe must be re-cut at a later time. Deburr ends of remaining pipe with a file.

Connecting the Tubing and Fittings

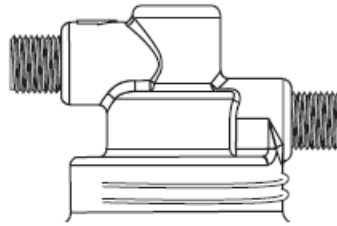
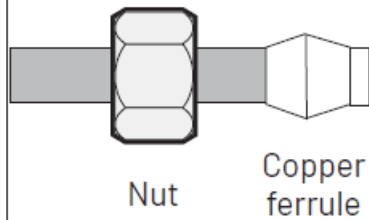


- Connecting the Inlet
 - Assemble fittings as shown. Press tubing into fitting until it stops. Hand tighten plus 1 to 1 1/2 turn(s) with a wrench.
- Connecting the Outlet
 - **NOTE:** If the water cannot be flushed through an existing water dispenser, install T-flush valve first and then connect the outlet of the filter the same as Step 3A. for a T-flush valve diagram. T-flush valve can also be installed after copper or tubing is connected to outlet. Connect outlet of filter the same as Step 3A.

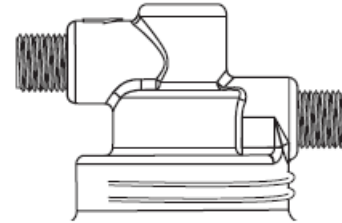
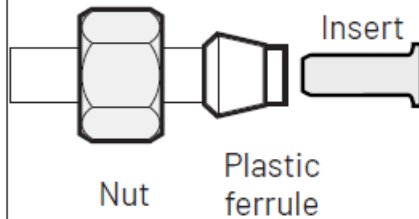
Installing the Cartridge

3

Copper Tubing: Hand-tighten, plus 1 to 1 1/2 turns with a wrench

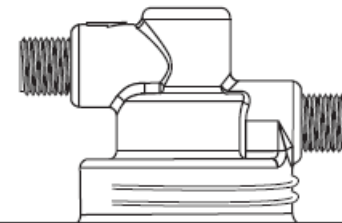
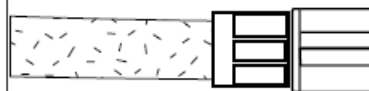


Plastic Tubing: Hand-tighten, plus 1 to 1 1/2 turns with a wrench





Flex Tubing: Wrench tighten. Do not over-tighten.

1/4-inch Compression flexible/braided hose



- Hold cartridge from the bottom when installing or changing the cartridge. Use caution not to scrape knuckles on bracket when locking the cartridge into place.

- Line up the arrow on the cartridge with unlocked padlock on head . Insert cartridge and turn arrow to locked padlock . See Diagram R4 in Filter Cartridge Replacement.

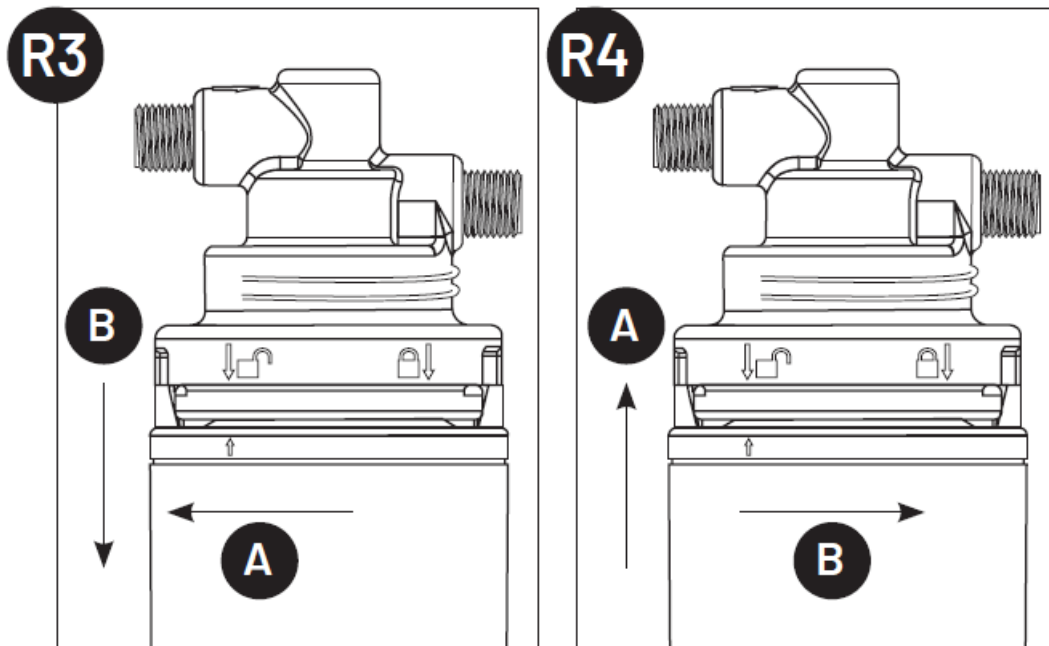
Putting the Filter into Operation

- Turn on water supply to allow filter to fill with water. Check for leaks. If it leaks, see Troubleshooting.
- Flush filter for 15 minutes through the water dispenser or if appliance is equipped with only an icemaker, through the T-valve, and discard water.
- Turn on icemaker.
- Check for leaks before leaving installation. If it leaks, see Troubleshooting.
 - **NOTE:** A drinking water cartridge may contain carbon fines (very fine black powder). If your icemaker contains black carbon fines, discard ice.
 - **NOTE:** Initially, filtered water may appear cloudy. If cloudiness in a glass of water disappears from the bottom, air within the water will disappear within a few weeks after installation.

INSTALLATION IS NOW COMPLETE.

CARTRIDGE REPLACEMENT

It is recommended that the filter be replaced every six months, or when you notice a change in taste, odor, or flow of the water being filtered.



1. Relieve pressure by turning off water supply to the filter and dispense water from refrigerator door until water flow stops.
2. Place towel under the system to catch any water drips.
3. (A) Turn arrow from locked to unlocked position and (B) remove cartridge.
4. (A) Line up arrow with unlocked position on head and insert cartridge. (B) Turn to locked position.
5. Turn on water and check for leaks. If it leaks, see Troubleshooting.
6. Flush water through refrigerator door or T-flush valve for 15 minutes to remove carbon fines. Check for leaks before leaving installation.

TROUBLESHOOTING

NOTE

- Spent adsorption media will not be regenerated and used.
- If adsorption media is affected by chlorine, water supply should be treated to remove chlorine prior to entering filter.

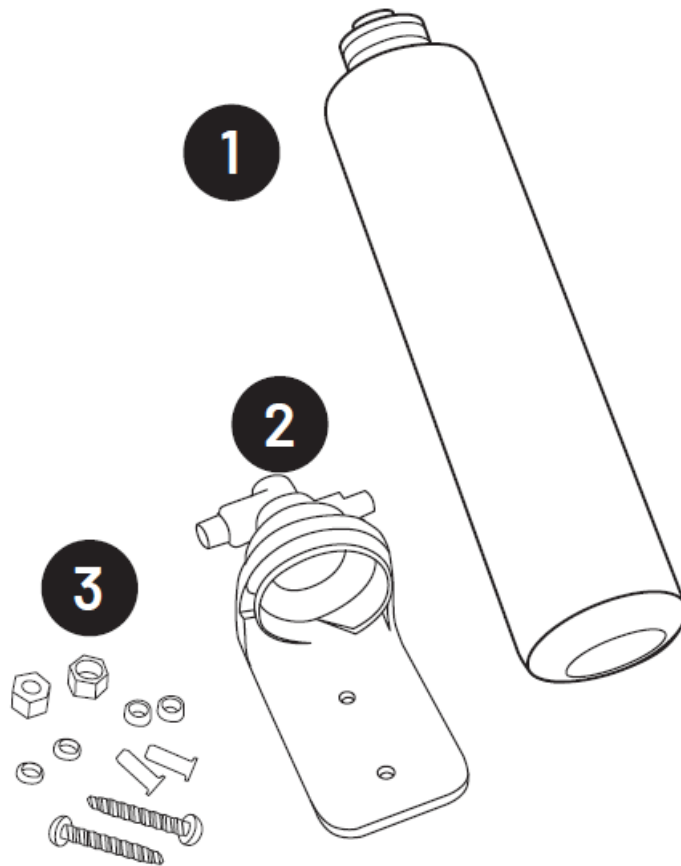
Leaks between head and cartridge

- Turn off water supply and press the red pressure-relief button. Remove bottom of housing.
- Remove cartridge and inspect o-rings to make sure they are in place and clean.
- Install cartridge and turn on water supply. If it still leaks, contact Technical Support at 800.279.9404. Turn off icemaker if filtered water goes to icemaker.

Leaks from fittings

- Relieve pressure by turning off water supply to the filter and dispense water through the refrigerator door or T-flush valve until water and airflow stops.
- For copper or plastic tubing, loosen the compression nut and pull the tubing from the brass fitting.
- Inspect to see if the ferrule and insert (plastic only) are properly installed on the tubing. If so, reconnect tubing finger-tight, then tighten nut snug about 1/2 to 1 turn with a wrench.
- Open the water supply valve. If the leaks persist, or if there are other leaks on the unit, turn off the water supply and icemaker, then call Technical Support at 800.279.9404. If the fitting does not leak, turn on the icemaker.

REPLACEMENT PARTS



Item Number	Part Number	Description
1	INRC-FF-500-SG-QC-6	Filter Cartridge
2	144842	Head Assembly
3	144846	Hardware Kit

For replacement parts call 1-800-279-9404.

MAINTENANCE

- Contact your area wholesaler or local water treatment professional for replacement cartridge pricing.

WARNING: This product contains chemicals known to the State of California to cause cancer or birth defects or other reproductive harm.

IOWA RESIDENTS ONLY

- **Store or seller's name:**
- **Address:**
- **City:**
- **State:**
- **Zip:**
- **Telephone:**
- **Seller's signature:**
- **Customer's signature Date:**

For Pentair Product Warranties visit: [Pentair.com/assets/residential-filtration-warranty](https://pentair.com/assets/residential-filtration-warranty)



Contact

- 13845 BISHOPS DR., SUITE 200, BROOKFIELD, WI 53005
- **CUSTOMER CARE:** 800.279.9404
- tech-support@pentair.com
- pentair.com

©2022 Pentair. All rights reserved. All indicated Pentair trademarks and logos are property of Pentair. Third-party registered and unregistered trademarks and logos are the property of their respective owners.

pentair.com

Documents / Resources

<div><div> PENTAIR OMNIFILTER <small>IN FF-500-SG-QC-4 OMNIFILTER CHANGING WATER DISPENSER EXTENDED FILTER WATER FILTER REPLACEMENT</small></div><div></div></div>	<p>PENTAIR IN-FF-500-SG-QC-4 OmniFilter Inline Filter Refrigerator and Ice maker [pdf] Instru ction Manual</p> <p>IN-FF-500-SG-QC-4 OmniFilter Inline Filter Refrigerator and Ice maker, IN-FF-500-SG-QC-4, O mniFilter Inline Filter Refrigerator and Ice maker, Filter Refrigerator and Ice maker, Refrigerator a nd Ice maker, Ice maker</p>
--	---

References

-  [Pentair](https://pentair.com)