

**Penta**  
**G21 Water**  
**Filter**  
**Pitcher**



## PENTA G21 Water Filter Pitcher Instruction Manual

[Home](#) » [PENTA](#) » PENTA G21 Water Filter Pitcher Instruction Manual 

### Contents

- [1 PENTA G21 Water Filter Pitcher](#)
- [2 Product Usage Instructions](#)
- [3 FAQs](#)
- [4 PRODUCT INFORMATION](#)
- [5 Parts](#)
- [6 READ ALL INSTRUCTIONS BEFORE USE](#)
- [7 Documents / Resources](#)
  - [7.1 References](#)



**PENTA G21 Water Filter Pitcher**



## Product Usage Instructions

### Before First Use:

1. Remove the lid by pulling up on both sides of it.
2. Hand wash the pitcher, reservoir, and lid with a soft cloth or sponge and mild liquid soap. Rinse and let dry.
3. Place the reservoir back into the pitcher with the tallest part facing the front of the pitcher.

### Prepare and Install the Filter:

1. Wash your hands and remove the filter from its package. Soak it upright in water for 10 minutes.
2. Rinse the filter under running water for 10 seconds.
3. Press it firmly into the tube of the reservoir to ensure a tight seal.
4. Attach the lid.

### Fill the Pitcher:

**Always use cold or room-temperature water when filling the pitcher.**

1. Press down on the tab next to the filter life indicator to open the hole in the lid.
2. Fill the reservoir with water. Discard the water after filtering it once. Repeat this process once more.
3. Fill the reservoir a third time and pour the water for drinking.

**NOTE:** It is normal for carbon dust to appear in the first two pitchers.

## FAQs

### • Q: How often should I change the filter?

- A: The filter life is approximately 160 liters or 35 days, so it is recommended to change the filter after reaching this limit.

- **Q: Is the product BPA-free?**

- A: Yes, the product is BPA-free, ensuring safe usage for you and your family.

- **Q: Can I use hot water in the pitcher?**

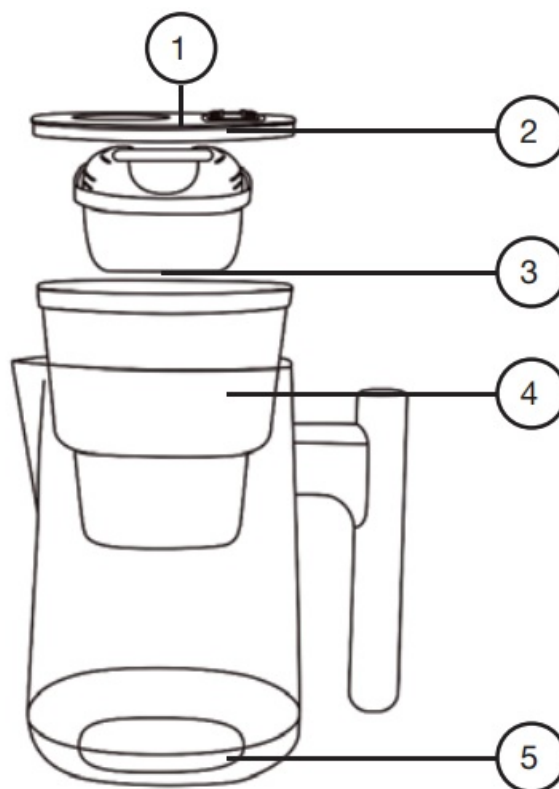
- A: It is recommended to always use cold or room temperature water when filling the pitcher to maintain optimal performance and longevity of the filter.

## PRODUCT INFORMATION

**Thank you for purchasing our product.**

Before using this unit, please read this manual.

### Parts



1. Filter life indicator
2. Lid
3. Filter
4. Tap water reservoir
5. Filtered water reservoir

## READ ALL INSTRUCTIONS BEFORE USE

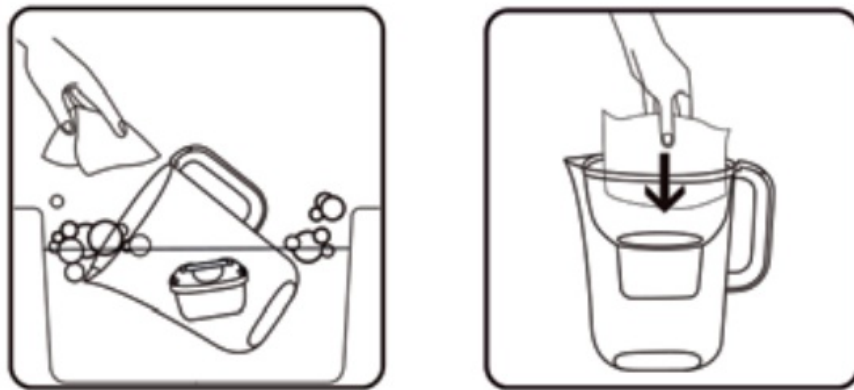
The water filtration system reduces chloride and particles in tap water and improves its taste, smell, and clarity of it. It also provides a more economical and environmentally friendly alternative to buying bottled water. Save money and enjoy the fresh, crisp taste of water.

### WARNING

- This product is intended to filter tap water only. Do not put water of unknown quality or that has been microbiologically impaired into the product.
- If people with a weakened immune system (such as children or the elderly) are advised to boil water before consumption, they must also boil the water before filtering.
- Place only cold or room-temperature water into the product for filtering.
- Do not apply concentrated cleaning agents such as heavy oxidants, bleach, chlorinated solvents, or the like to any part of this product. Do not use abrasive pads on the product.
- This product is not fit for the dishwasher.
- If the pitcher or reservoir is broken or cracked, replace the whole product. If the filter is damaged, replace only the filter.

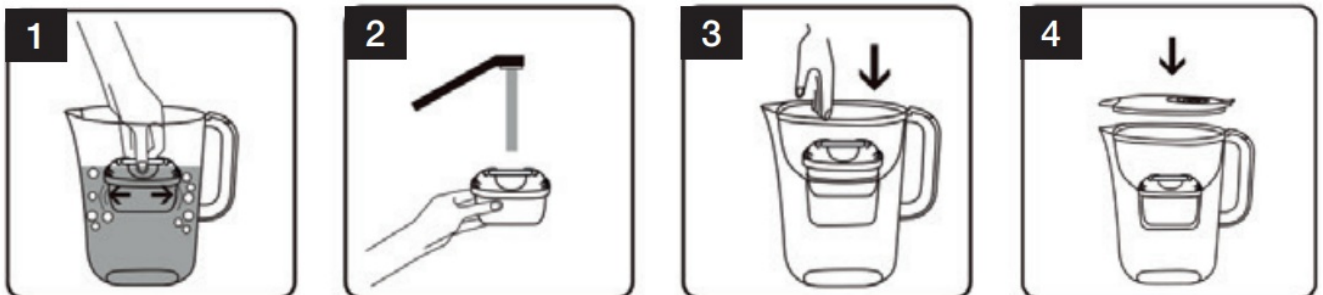
### First use

1. Remove the lid by pulling up on both sides of it.
2. Hand wash the pitcher, reservoir, and lid with a soft cloth or sponge and a mild liquid soap. Rinse and let dry.
3. Place the reservoir back into the pitcher as shown in the diagram; the tallest part of the reservoir must face the front of the pitcher.



### Prepare and install the filter:

1. Wash your hands and then remove the filter from its package. Soak it upright in water for 10 minutes.
2. Rinse the filter under running water for 10 seconds.
3. Press it firmly down into the tube of the reservoir to ensure a tight seal.
4. Attach the lid.



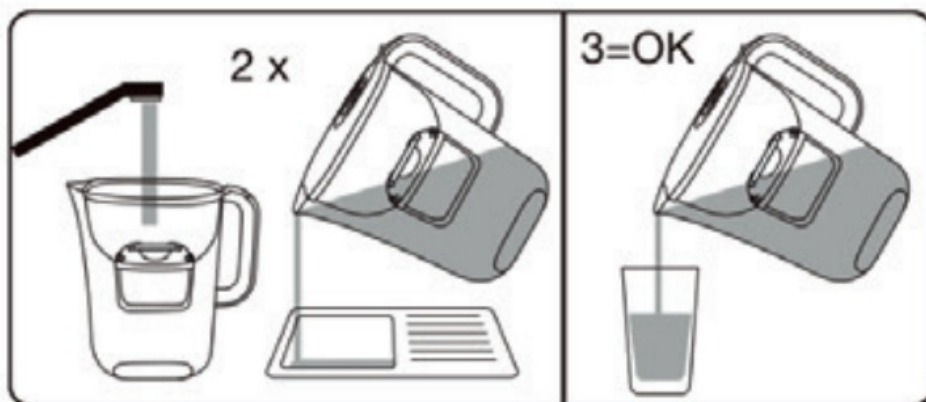
### Fill the pitcher:

- Always use cold or room-temperature water when filling the pitcher.
- Press down on the tab next to the filter life indicator to open the hole in the lid. Fill the reservoir with water.

Once it has been filtered, discard the water and repeat this process once more. Fill the reservoir a third time and pour the water for drinking.

**NOTE:** It is normal for carbon dust to appear in the first two pitchers.

- Always allow all the water in the Reservoir to pass through the filter.



#### **Filter Life Indicator:**

Use the rotating wheels to set the filter life indicator to the date 35 days after inserting a new filter. If the desired day is not available, choose the next available day. Replace the filter when the day reaches the date on the indicator. Take it out of the kettle and repeat the steps from the Prepare and install the filter chapter to insert the new filter.

- **Note:** The recommended period of use of one filter cartridge is no longer than 35 days or 160 l of filtered water.
- **Note:** Brita® filters are also compatible with this Pitcher.

#### **For best results:**

- Keep enough water in the pitcher to maintain the bottom of the filter in the water. This will prevent the filter from drying out. If the filter has not been in contact with water for two days, resoak it for 10 minutes and then reinstall it.
- Store the pitcher in the refrigerator or in a cool location. If the water has been sitting for several days, discard it and refill the pitcher with fresh water.

#### **More products G21**



The English version of the manual is an exact translation of the original manufacturer's instructions. Images used in this manual are for illustrational purposes only and may differ from the actual product.

## Documents / Resources



### [PENTA G21 Water Filter Pitcher](#) [pdf] Instruction Manual

G21 2.5 L biela, G21 2.5 L ern, G21 2.5 L ierna, G21 Water Filter Pitcher, G21, Water Filter Pitcher, Filter Pitcher, Pitcher

## References

- [User Manual](#)

### [Manuals+](#), [Privacy Policy](#)

This website is an independent publication and is neither affiliated with nor endorsed by any of the trademark owners. The "Bluetooth®" word mark and logos are registered trademarks owned by Bluetooth SIG, Inc. The "Wi-Fi®" word mark and logos are registered trademarks owned by the Wi-Fi Alliance. Any use of these marks on this website does not imply any affiliation with or endorsement.