

# PENTA

PENTA G21  
OSMO  
Countertop  
Reverse Osmosis  
System I



## PENTA G21 OSMO Countertop Reverse Osmosis System Instruction Manual

[Home](#) » [PENTA](#) » PENTA G21 OSMO Countertop Reverse Osmosis System Instruction Manual 

### Contents

- [1 PENTA G21 OSMO Countertop Reverse Osmosis System](#)
- [2 Unpacking and service](#)
- [3 Safety instructions](#)
- [4 Troubleshooting](#)
- [5 Technical specification:](#)
- [6 Documents / Resources](#)
  - [6.1 References](#)
- [7 Related Posts](#)

# PENTA

**PENTA G21 OSMO Countertop Reverse Osmosis System**



Thank you for purchasing our product.  
Before using this unit, please read this manual.

## Unpacking and service

Remove all packaging material and place the water purifier in the desired location. Due to the need for regular filling of the tank, we recommend placing the device near the tap.

If you encounter any problems during installation or operation, please contact G21 authorized service at [servisg21@penta.cz](mailto:servisg21@penta.cz)

Do you know that... you are choosing a more environmentally friendly and sustainable solution by purchasing a reverse osmosis filtration system? A major benefit of an osmosis system is the reduction in bottled water consumption, eliminating the high cost of plastic bottle production, transportation, costly recycling processes and significant amounts of plastic waste.

## Safety instructions

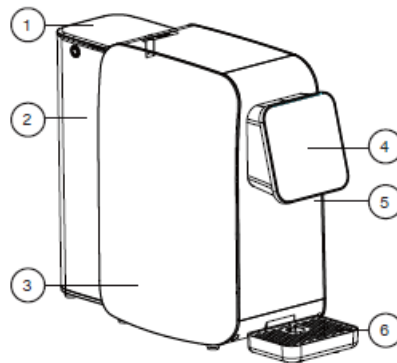
1. Do not wash the body of the appliance under running water. Clean it gently with a damp cloth.
2. Do not plug the device into an extension socket.
3. The appliance must be on a firm and level surface.
4. Do not add cloudy water, ice cubes or other liquid mixtures such as milk and fruit juices to the water tank.
5. When pouring water, avoid contact between the outlet nozzle and the water in the cup or glass to avoid clogging the outlet nozzle.
6. This appliance is not intended for use by persons (including children) with physical disabilities, sensory or mental abilities, or lack of experience and knowledge, if no supervision or instruction has been given regarding the use of the appliance by the person responsible for their safety. No child shall clean or maintain the equipment unsupervised.
7. If the power cord is damaged, it must be replaced by an authorized G21 service center.
8. Pour water at a temperature of 5 – 38 °C into the water tank.
9. If you select a lower temperature program immediately after pouring hot water, the initial temperature of the water will still be hot. This is not an error, it is residual runoff from the previous process. Use caution when filling the water after the hot temperature mode to avoid scalding.
10. If the incoming water does not meet municipal tap water standards, the life of the filters is significantly reduced.

## Note

1. This appliance is equipped with a quantitative water outlet protection. Once the outlet exceeds 500 ml, it will be stopped automatically.
2. When pouring hot water, do not put your hand under the water spout to avoid scalding yourself.
3. Safety lock: the appliance automatically activates a safety lock to prevent the high temperature program from being set after ten seconds of inactivity.

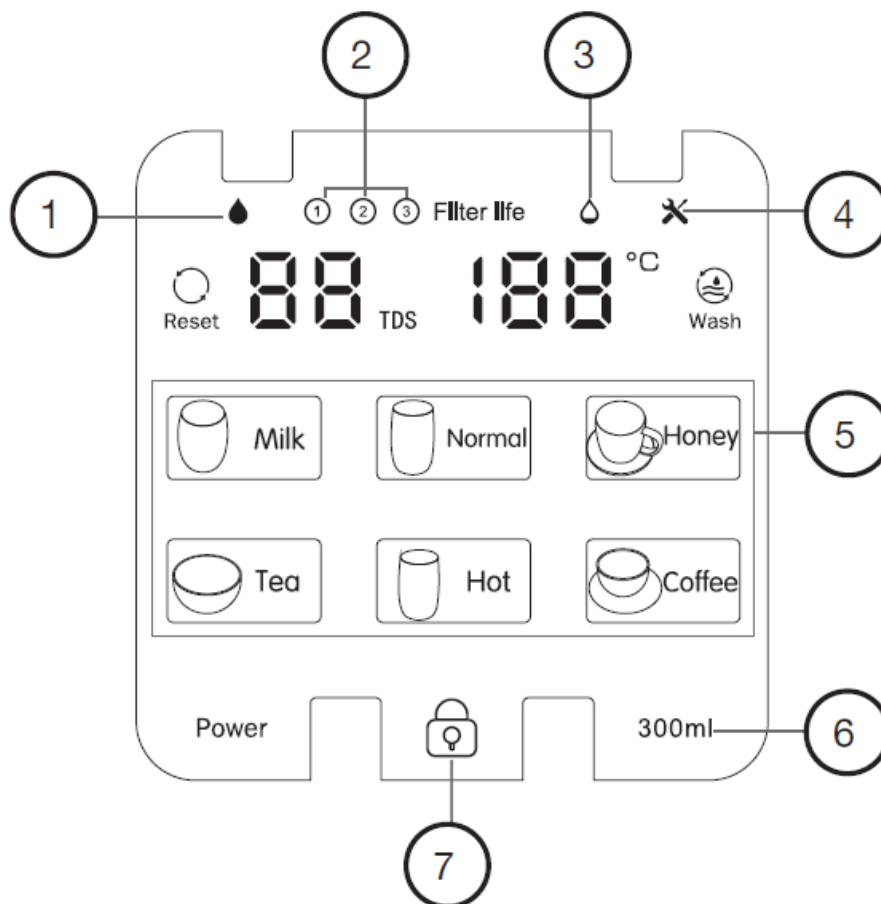
## Description of the device

1. Water tank cover
2. Water tank
3. Body
4. Control panel
5. Water outlet
6. Drip tray



## Control panel

- 1.




The flashing indicator shows that the water is being filtered and cannot be poured. When the indicator goes out, water filtration is complete.

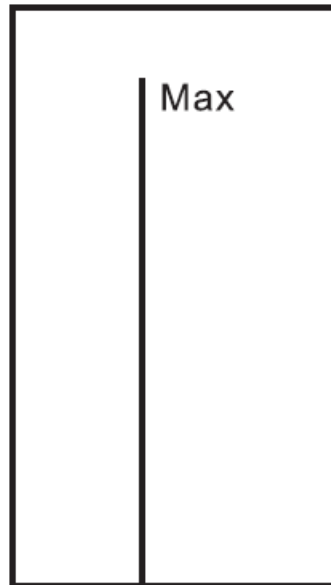
2. If this indicator is orange, replace the marked filter.
3. Tank water shortage indicator.
4. Service indicator – read the instruction manual or contact an authorized G21 service center.
5. Selecting the water temperature – for hot temperature, first unlock the display by briefly pressing the lock button (No. 7).
6. Water quantity selection (up to 500 ml).
7. Water temperature of individual programs: Normal – 25 °C

- Milk – 45 °C
- Honey – 55 °C
- Tea – 80 °C
- Coffee – 90 °C
- Hot – 95 °C

### First use

1. Place the appliance on a level spot – due to the frequent refilling of water, it is advisable to place the appliance, for example, on the kitchen counter near the water tap.
2. Remove the water tank, fill the tap water section up to the MAX mark and return the water tank to its intended location.

3. Plug the power cord into a power outlet.
4. The appliance automatically flushes the entire filter system and pipes.  
This process takes approximately two minutes. When finished, pour the water out of the tank and refill it with clean water.
5. The appliance automatically starts the filtration process. After completion, the filtered water can be consumed.  
After the filtration is complete, refill the tank to extend the life of the filters.
6. Do not select a high temperature program for first use to avoid damage to the internal electronics. For example, select the room temperature program first and then the high temperature program.
7. To achieve excellent water quality, it is recommended to press and hold the  button for 3 seconds for a manual rinse, preferably three times.



### Daily use

This purifier offers 6 temperature modes. The „Honey“, „Milk“ and „Normal“ modes automatically start pouring water. To select the other three high temperature programs, you must first press and hold the lock button. Water pouring can be interrupted by pressing any temperature button.

Note: If you select a lower temperature after pouring the hot water, it is normal for the remaining hot water from the previous process to flow out first.


### Before you leave for holidays

In case of absence, the following steps must be followed to ensure the longevity of the filters and the appliance itself.

1. Empty the water tank and drain all water from the inner tank using the „Normal“ mode.
2. Unplug the power cord from the power outlet.
3. For long term absence (1 to 3 weeks), remove all filters and wrap them in an airtight foil or bag and store them in the refrigerator.
4. When you return, put the filters back in place and repeat the steps in chapter „First use“.

Please note: In the event of an absence of more than three weeks, the removed filters must be recycled and brand new filters used on return

### Water exchange

When the  indicator comes on, this means that there is only waste water in the tank. Pour it out and refill the

clean water section of the tank to the MAX level.

Why is the water tank divided into two parts and what does waste water mean?

In order to achieve a longer lifetime of the individual filters and the equipment itself, we have divided the tank into two parts – the first, where clean water is poured, and the second, where the so-called waste water flows. At the top of the tank you will find an overflow where the waste water flows back to the clean water section. The sediments remaining in the waste water are held at the bottom of the container, so that only less concentrated water overflows and is filtered again.

The internal membrane filters the wastewater at a ratio of 1:2 (1 liter of clean water to 2 liters of wastewater) until the clean water section of the tank is empty and only the wastewater section remains full. This results in a total wastewater ratio of 1:1. This process reduces the potential for membrane clogging during filtration.

### **Sleep mode**

After one hour of inactivity, the device automatically goes into sleep mode to save electricity. To enter standby mode, simply press any temperature mode.

### **Temperature control – „Coffee“ mode**

When the lock is on, long press the „Coffee“ button to enter the temperature control mode. The device displays „95“, press the „Coffee“ button to increase the temperature by 1°C, press the „Tea“ button to decrease the temperature by 1°C. The adjustable temperature range is 85 – 95 °C. The setting is saved and exited after five seconds of inactivity.

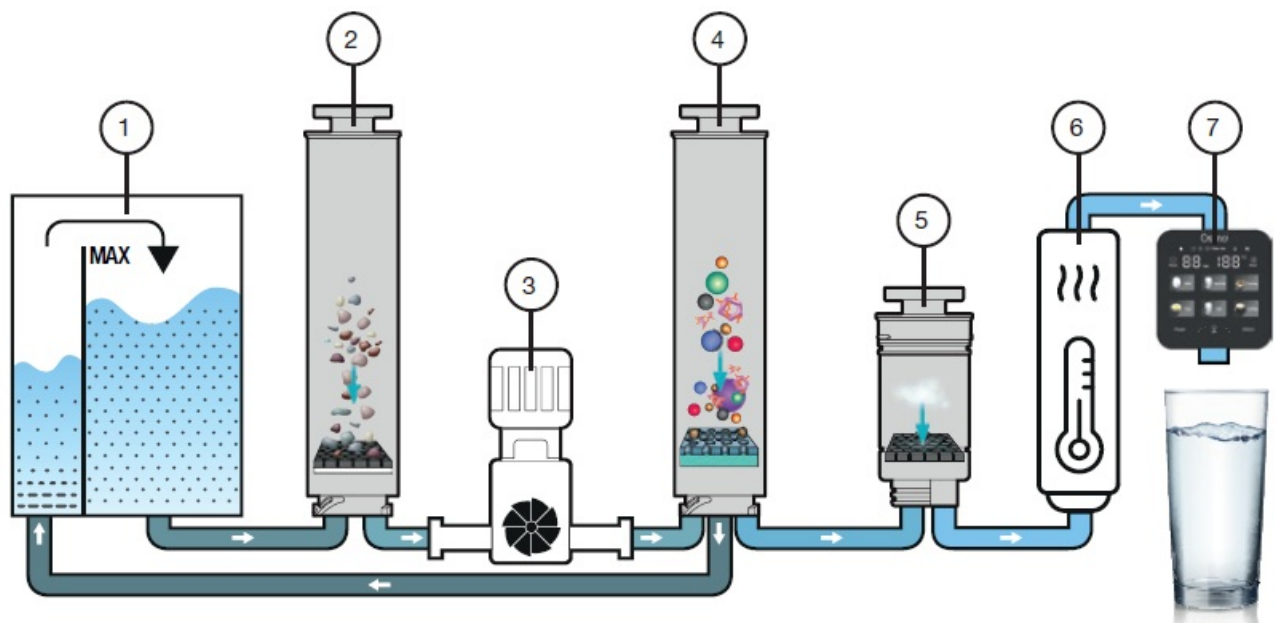
### **Functions of individual filters**

1. PAC – PP filter with activated carbon – removal of impurities such as rust, sand, settled solids, removal of residual chlorine and absorption of unwanted tastes and odors – replacement period 6-12 months
2. RO – Reverse Osmosis Filter – filter accuracy 0,0001 µm, removal of coarse impurities, bacteria and heavy metals – replacement time 12-24 months.
3. CF – improves the taste of filtered water – replacement time 6-12 months

### **How is the water filtration itself carried out?**

The water first passes through a pre-filter that reliably removes sediments and inorganic substances such as chlorine. This filter serves primarily to protect the reverse osmosis filter membrane. After pre-filtration, the water flows through a booster pump and is forced through the membrane by a water pressure of 0.4-0.6 MPa. This membrane has filter holes as small as 0.0001 µm, allowing only the smallest ions and water molecules to pass through. Due to this extremely fine structure of the membrane, filtered substances must also be removed to prevent clogging. This is why wastewater is produced. In the final filtration, the water passes through a secondary carbon filter, which ensures a balanced pH value and adds the necessary minerals and fresh taste.

- 1.



Water tank

2. PAC filter
3. Pump
4. RO filter
5. CF filter
6. Heater
7. Control panel

### Filter replacement

When the filter life reaches 20%, the life indicator will turn orange and the filter needs to be replaced.

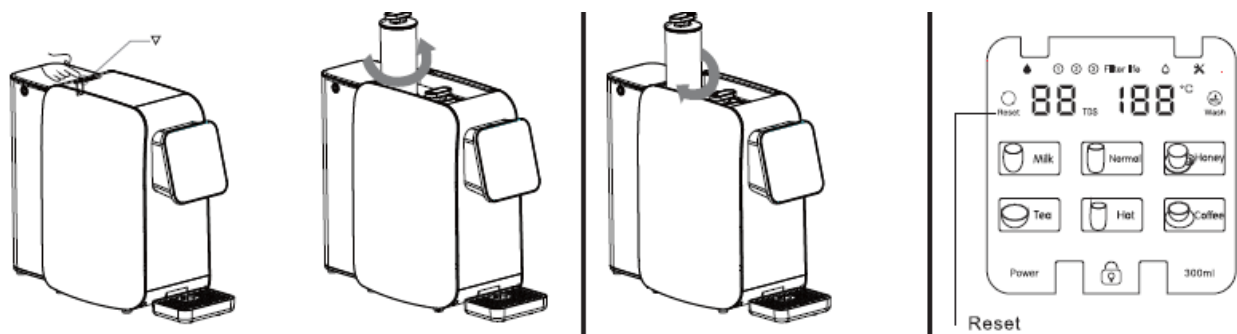
#### 1. Ste 1

Disconnect the power cord, remove the top cover and remove the old filter.

#### 2. Ste 2

Insert the new filter.

#### 3. Ste 3



- Press the button, the cover pops off and you can remove it.  
Turn the filter counterclockwise and remove it.
- Turn the filter clockwise, make sure it is firmly in place, and replace the top cover.
- Press and hold the „Reset“ button and then press this button to select the filter to be replaced. Press the „Reset“ button repeatedly for a long time to complete the change.

Note: The original filter must be used for replacement to ensure the safety of the drinking water..

## Troubleshooting

The Problem	Solution
The device does not produce water	Check if there is water in the tank.
	Check the filter for blockages.
The water flow is small	Check if the filter is clogged or should have been replaced already.
Water doesn't taste good	Check that all components of the device are in place.
	Check that the parts in the outlet are tightly bolted, repositioned in the teeth or displaced.
	Check that the silicone gasket in the drain is in good condition.
Electricity leakage, equipment voltage	The appliance is plugged into an improperly grounded outlet.
The device does not produce hot water	Make sure the power is on.
	The thermostat guard on the heating vessel does not reset.

## Error codes

Code	Error	Solution
E1	The device does not produce water.	Check for leaks.
E5	The inlet water temperature is below 5 °C.	Fill the tank with water at a temperature of 5 – 38 °C.

## Technical specification:

- Voltage: 220-240 V
- Frequency: 50 Hz
- Power: 2200 W
- Heating power: 2200 W
- Power consumption: 0.1 kWh/24 h
- Water heating capacity: 18L/h (> or equal to 90 °C)
- Filtration flow: 7.8 L/h
- Applicable water temperature: 5-38 °C
- Product dimensions: 450\*200\*387 mm

The English version of the manual is an exact translation of the original manufacturer's instructions. Images used in this manual are for illustrational purposes only and may differ from the actual product.





## Documents / Resources



[PENTA G21 OSMO Countertop Reverse Osmosis System](#) [pdf] Instruction Manual  
G21 OSMO Countertop Reverse Osmosis System, G21 OSMO, Countertop Reverse Osmosis System, Reverse Osmosis System, Osmosis System

## References

- [User Manual](#)

[Manuals+.](#) [Privacy Policy](#)

This website is an independent publication and is neither affiliated with nor endorsed by any of the trademark owners. The "Bluetooth®" word mark and logos are registered trademarks owned by Bluetooth SIG, Inc. The "Wi-Fi®" word mark and logos are registered trademarks owned by the Wi-Fi Alliance. Any use of these marks on this website does not imply any affiliation with or endorsement.