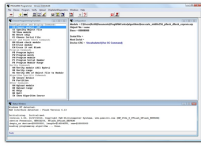


[Skip to content](#)

## Manuals+

User Manuals Simplified.

# PEmicro PROGDSC Programming Software User Guide



[Home](#) » [PEmicro](#) » PEmicro PROGDSC Programming Software User Guide

Contents [hide](#)

[1 PEmicro PROGDSC Programming Software](#)

[2 Introduction](#)

[3 Startup](#)

[4 Programming Commands](#)

[5 Configuration Commands For Startup](#)

[6 Verification Overview](#)

[7 DOS Error Returns](#)

[8 Example Programming Script File](#)

[9 Using Command-Line Parameters in a Script](#)

[10 Sample Batch File](#)

[11 Information](#)

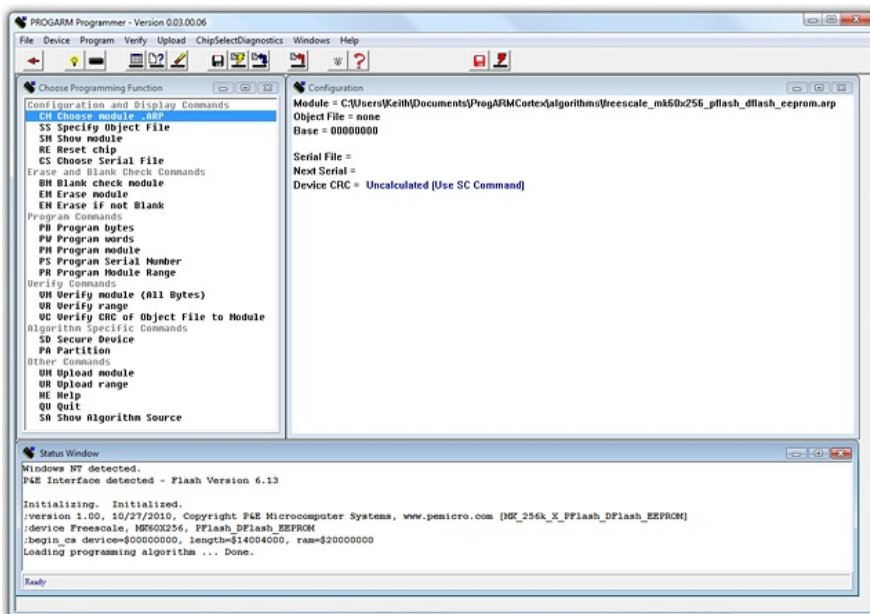
[12 Documents / Resources](#)

[12.1 References](#)

[13 Related Posts](#)



## PEmicro PROGDSC Programming Software



## Introduction

CPROGDSC is a Windows command-line version of the PROGDSC software which programs Flash, EEPROM, EPROM, etc. through a PEmicro hardware interface to a supported NXP DSC processor. The hardware interfaces are available from PEmicro.

Once your interface hardware is properly connected between your PC and target device, you may launch the CPROGDSC executable from the command line. In addition to the executable, multiple command-line parameters must also be passed in order to configure which PEmicro hardware interface CPROGDSC should attempt to connect to, and to configure how that hardware interface will connect

to the target device. These parameters include the name of the configuration (.CFG) file, as well as startup commands such as the name of the hardware interface or the port to which the interface is connected.

The .CFG file specifies how to program the target as you intend, and it includes standard programming commands and, optionally, configuration commands. The following chapters will provide a detailed explanation of these commands and parameters.

## Startup

- Connect the hardware interface between your PC and the target MCU via the debug ribbon cable.
- Start the programming software by running it from the Windows Command prompt or by calling the CPROGDSC executable with the correct command line parameters. Allowed command line parameters are:

CPROGDSC [?/!] [filename] [/PARAMn=s] [v] [reset\_delay n] [bdm\_speed n]

[hideapp] [Interface=x] [port=y] [showports] [-usebyteaddr][logfile logfilename]

### where:

- **[?/!]**  
Use the '?' or '!' character option to cause the command-line programmer to wait and display the result of programming in the PROGDSC window. '?' will always display the result, '!' will display the result only if an error occurred. If the user does not use a batch file to test error level, this provides a method to display the programming result. This option should be the FIRST command-line option.
- **[filename]**  
A file containing programming commands and comments, default = prog.cfg. See Section 7 – Example Programming Script File for an example.
- **[/PARAMn=s]**  
A command-line parameter that can modify the executing script by replacing special tags (/PARAMn). This can be used to replace any part of the script including programming commands, filenames, and parameters. Valid values of n are 0..9. s is a string that will replace any occurrence of /PARAMn in the script file. Section 8 – Using Command-Line Parameters in a Script has an example for usage.
- **[INTERFACE=x]**  
Where x is one of the following: (See examples section)
  - USB MULTILINK (This setting also supports OSBDM) CYCLONE
  - PARALLEL (Parallel Port or BDM Lightning [Legacy])
- **[PORT=y]**  
Where the value of y is one of the following (see the showports command-line parameter for a list of connected hardware; always specify the "interface" type as well):
  - **USBx**  
Where x = 1,2,3, or 4. Represents an enumeration number for each piece of hardware starting at 1. Useful if trying to connect to a Cyclone or Multilink product. If only one piece of hardware is connected, it will always enumerate as USB1.  
**An example to select the first Multilink found is:**  
INTERFACE=USBMULTILINK PORT=USB1
  - **###.##**  
Ethernet IP address ###.##. Each # symbol represents a decimal number between 0 and 255. Valid for Cyclone and Tracelink interfaces.  
Connection is via Ethernet.  
INTERFACE=CYCLONE PORT=10.0.1.223
  - **NAME**  
Some products, such as the Cyclone and Tracelink, support assigning a name to the unit, such as "Joe's Max". The Cyclone may be referred to by it's assigned name. If there are any spaces in the name, the whole parameter should be enclosed in double quotes (this is a Windows requirement, not a PEmicro requirement).  
**Examples:**  
INTERFACE=CYCLONE PORT="MyCyclone99"
  - **UNIQUEID**  
USB Multilink products all have a unique serial number assigned to them, such as PE5650030. The Multilink may be referred to this number. This is useful in the case where multiple units are connected to the same PC.  
**Examples:**  
INTERFACE=USBMULTILINK PORT=PE5650030
  - **COMx**  
Where x = 1,2,3, or 4. Represents a COM port number. Valid for Cyclone interfaces.  
To connect to a Cyclone on COM1 : INTERFACE=CYCLONE PORT=COM1
  - **x**  
Where x = 1,2,3, or 4. Represents a parallel port number  
To select a parallel interface on Parallel Port #1: INTERFACE=PARALLEL PORT=1
  - **PCIx**  
Where x = 1,2,3, or 4. Represents a BDM Lightning card number. (Note: this is a legacy product)  
**To select a parallel cable on BDM Lightning #1:**  
INTERFACE=PARALLEL PORT=PCI1
- **[showports]**

The command-line programmer outputs all available ports to a text file and then terminates (regardless of other command-line parameters). This information output to the text file includes the parameters needed to contact attached programming hardware as well as a description of the hardware interface. The default output filename is ports.txt and is created in the same folder as CPROG.

The output can also be directed to a different file.

#### **Example: SHOWPORTS=C:\MYPORTS.TXT**

This list does not show parallel port or COM port options which are also available. Below is an example of the output for various hardware interfaces connected to the PC (Note that there are different ways to address the same unit; the data for each interface may be followed by a [DUPLICATE] line which shows a different label for the same interface).

#### **Showports Output Example:**

INTERFACE=USBMULTILINK PORT=PE5650030;

- **USB1:** Multilink Universal FX Rev A (PE5650030)[PortNum=21]

INTERFACE=USBMULTILINK PORT=USB1

**USB1:** Multilink Universal FX Rev A (PE5650030)[PortNum=21][DUPLICATE]

- INTERFACE=CYCLONE PORT=10.0.9.197  
; 10.0.9.197 : Public Cyclone [PortNum=61]
- INTERFACE=CYCLONE "PORT=Public Cyclone"  
; 10.0.9.197 : Public Cyclone[PortNum=61][DUPLICATE]
- INTERFACE=CYCLONE "PORT=Joe's Cyclone"  
; USB1 : Cyclone (Joe's)[PortNum=101]
- INTERFACE=CYCLONE PORT=USB1  
; USB1 : Cyclone (Joe's)[PortNum=101][DUPLICATE]

#### **[v]**

This causes the programmer not to check the range of S-record addresses before programming or verifying. This speeds up the programming process. The option should be used with care as all out-of-range s-records will be ignored.

#### **[reset\_delay n]**

Specifies a delay after the programmer resets the target that we check to see if the part has properly gone into background debug mode. This is useful if the target has a reset driver which hold the MCU in reset after the programmer releases the reset line. The n value is a delay in milliseconds.

[bdm\_speed n] This option allows the user to set the BDM shift clock speed of PEmicro's debug interface. This integer value may be used to determine the speed of communications according to the following equations:

- USB Multilink (includes Universal):  $(1000000/(N+1))$  Hz
- USB Multilink Universal FX:  $(25000000/(N+1))$  Hz
- Cyclone or Tracelink:  $(50000000/(2*N+5))$  Hz

#### **[hideapp]**

This will cause the command-line programmer to not display a visual presence while running with the exception of appearing on the taskbar. 32-bit applications only!

#### **[-usebyteaddr]**

If the optional parameter -usebyteaddr is specified, then the addresses in the S19 S-Record will be treated as byte addresses. If the optional parameter -usebyteaddr is omitted, then the addresses in the S19 S-Record will be treated as word addresses.

#### **[/logfile logfilename]**

This option opens a logfile of the name "logfilename" which will cause any information which is written to the status window to also be written to this file. The

"logfilename" should be a full path name such as c:\mydir\mysubdir\mylog.log.

#### **Command Line Examples:**

CPROGDSC C:\ENGINE.CFG INTERFACE=USBMULTILINK PORT=PE5650030

Opens CPROGDSC with the following options:

- Run the C:\ENGINE.CFG script
- Interface is first USB Multilink Universal with serial number PE5650030
- Autodetect communications frequency (io\_delay\_cnt not set)

CPROGDSC C:\ENGINE.CFG Interface=CYCLONE Port=209.61.110.251

**Opens CPROGDSC with the following options:**

- Run the C:\ENGINE.CFG script
- Interface is Cyclone Max via the Ethernet Port with an IP address of 209.61.110.251

### Opens CPROGDSC with the following options:

- Run the C:\ENGINE.CFG script
- Interface is USB Multilink Universal, first interface detected.

## Programming Commands

Programming commands all start with a two-character sequence followed by white space (blanks or tabs). Lines starting with characters that are not commands are listed as REMarks. The term filename means a full DOS path to a file. Commands use the same two-letter codes as used in the interactive programmers PROGDSC. The same.DSP files used by PROGDSC are used to set up for a particular device to be programmed. If a user function is specified for a particular device, its two-character command and the meaning or user\_par are specified in the.DSP file.

### Note:

The command parameters starting\_addr, ending\_addr, base\_addr, byte, word, and user\_par use a default hexadecimal format.

- **BM** – Blank check module.
- **CHANGEV n.nn** – (Cyclone only) Change the voltage provided to the target, where n.nn represents a value between 0.00 and 5.00, inclusive. When the command executes the Cyclone will immediately change to that voltage. If the Cyclone relays are off prior to calling this command, then the relays will turn on and set the new voltage value when this command is executed. Note that too low of a voltage value may put the device into low-power mode which can lose debug communication altogether. Make sure the Cyclone's jumper settings are set correctly to send the power to the right ports.
- **EM** – Erase module.
- **PW starting\_addr word ... word** – Program words.
- **PM** – Program module.
- **CM filename base\_addr** – Choose module .DSP file. Note: Certain modules may require a base address to be specified.
- **VM** – Verify module.
- **VR starting ending** – Verify range.
- **UM filename** – Upload module.
- **UR starting ending filename** – Upload range.
- **SS filename** – Specify S record.
- **SM starting ending** – Show module.
- **RELAYSOFF** – (Multilink FX & Cyclone only) Turn off the relays that provide power to the target, including a power down delay if specified. Especially useful for users who want to power cycle their board before running tests, allow their bootloader to run, or have the application code run after programming.
- **RELAYSON** – (Multilink FX & Cyclone only) Turn on the relays to provide power to the target, including a power up delay if specified. The voltage supplied will be based on the last voltage setting specified. For Cyclone users, the CHANGEV command can change the voltage value. Especially useful for users who want to power cycle their board before running tests, allow their bootloader to run, or have the application code run after programming.
- **HE** – Help (look at cprog.doc file).
- **QU** – Quit.
- **RE** – Reset chip.
- **GO** – Starts device running. Can be used as final command if you want the device to run for testing. Should be immediately preceded by an 'RE' command.
- **DE timeinms** – Delays "timeinms" milliseconds
- **xx user\_par** – Only for user function specified in .DSP file.

## Configuration Commands For Startup

Configuration commands are all processed before the programmer attempts to contact the target. The whole configuration file is parsed for these commands prior to attempting communications. This section gives an overview of using these configuration commands to do different type of configuration.

**Note:** The default base for configuration command parameters is decimal.

**An overview of the configuration commands is as follows:**

### DEVICE n

Determines the target device that is about to be programmed. For a list of devices supported, you will need to run PROGDSC and refer to the Target CPU Information drop-down list in the PROGDSC Connection Manager. NOTE: All .CFG files must include this command.

### CUSTOMTRIMREF nnnnnnnn.nn

Desired internal reference clock frequency for the "PT; Program Trim" command. This frequency overrides the default internal reference clock frequency. Valid values for "n" depend on the particular device being programmed. Please refer to the electrical specifications of your device for valid internal reference frequency clock range. Where:

- nnnnnnnn.nn: Frequency in Hertz with two decimal places

## **DEVICE POWER n**

For Cyclone (excludes Cyclone MAX). This setting defines the target voltage that will be provided to the target if the source of the voltage is derived from the Cyclone's internal power. Valid values of n are:

- **0:** 5 Volts, Generated/Switched by Cyclone
- **2:** 3 Volts, Generated/Switched by Cyclone
- **4:** 2 Volts, Generated/Switched by Cyclone

## **PROVIDEPOWER n**

Determines whether interface should provide power to the target. NOTE: Not all hardware interfaces support this command. Valid values of n are:

- **0:** Interface does not provide power to target. (default)
- **1:** Enable Interface provides power to target.

## **POWERDOWNDELAY n**

Amount of time to delay when the power to the target is turned off for the targets power supply to drop to below 0.1v. n is the time in milliseconds.

## **POWERUPDELAY n**

Amount of time to delay when the power to the target is turned on OR the target is reset, and before the software attempts to talk to the target. This time can be a combination of power on time and reset time (especially if a reset driver is used). n is the time in milliseconds.

## **POWEROFFONEXIT n**

Determines whether power provided to the target should be turned off when the CPROGDSC application terminates. NOTE: Not all hardware interfaces support this command. Valid values of n are:

- **0:** Turn power off upon exit (default)
- **1:** Keep power on upon exit

## **NOPOWERDIALOGS**

Do not ask the user to cycle target power, and exit with error if there is a problem entering debug mode.

## **Verification Overview**

There are several commands available that can be used to verify the contents of the flash on the device after programming it. The most widely used command is "VC ;Verify CRC of Object File to Module". The "VC" command will instruct CPROGDSC to first calculate a 16-bit CRC value from the chosen object file. CPROGDSC will then load code into the RAM of the device and instruct the device to calculate a 16 bit CRC value from the contents in FLASH of the device. Only valid address ranges in the object file are calculated on the device. Once the 16-bit CRC value from the object file and the device are available, CPROGDSC compares them. An error is thrown if the two values do not match.

Alternatively, the "VM ;Verify Module" command can be used to perform a byte by byte verification between the chosen object file and the device. Typically, the VM command will take longer to perform than VC command since CPROGDSC has to read the contents of FLASH of the device byte by byte. There are also two other commands that can be used for verification. The "SC ;Show Module CRC" instructs CPROGDSC to load code into the RAM of the device and instruct the device to calculate a 16-bit CRC value from the contents of the entire FLASH of the device, which includes blank regions. Once the 16-bit CRC value has been calculated, CPROGDSC will display the value in the status window. The "VV ;Verify Module CRC to Value" command is similar to the "SC" command. The difference is that instead of displaying the calculated 16-bit CRC value, CPROGDSC will compare the calculated value against a 16-bit CRC value given by the user.

## **DOS Error Returns**

**DOS error returns are provided so they may be tested in .BAT files. The error codes used are:**

- 0 – Program completed with no errors.
- 1 – Cancelled by user.
- 2 – Error reading S record file.
- 3 – Verify error.
- 4 – Verify cancelled by user.
- 5 – S record file is not selected.
- 6 – Starting address is not in module.
- 7 – Ending address is not in module or is less than starting address.
- 8 – Unable to open file for uploading.
- 9 – File write error during upload.
- 10 – Upload canceled by user.
- 11 – Error opening.DSP file.
- 12 – Error reading.DSP file.
- 13 – The device did not initialize.
- 14 – Error loading.DSP file.

- 15 – Error enabling module just selected.
- 16 – Specified S record file not found.
- 17 – Insufficient buffer space specified by .DSP to hold a file S-record.
- 18 – Error during programming.
- 19 – Start address does not point into module.
- 20 – Error during last byte programming.
- 21 – Programming address no longer in module.
- 22 – Start address is not on an aligned word boundary.
- 23 – Error during last word programming.
- 24 – Module could not be erased.
- 25 – Module word not erased.
- 26 – Selected .DSP file does not implement byte checking.
- 27 – Module byte not erased.
- 28 – Word erase starting address must be even.
- 29 – Word erase ending address must be even.
- 30 – User parameter is not in the range.
- 31 – Error during .DSP specified function.
- 32 – Specified port is not available or error opening port.
- 33 – Command is inactive for this .DSP file.
- 34 – Cannot enter background mode. Check connections.
- 35 – Not able to access processor. Try a software reset.
- 36 – Invalid .DSP file.
- 37 – Not able to access processor RAM. Try a software reset.
- 38 – Initialization cancelled by user.
- 39 – Error converting hexadecimal command number.
- 40 – Configuration file not specified and file prog.cfg does not exist.
- 41 – .DSP file does not exist.
- 42 – Error in io\_delay number on command line.
- 43 – Invalid command line parameter.
- 44 – Error specifying decimal delay in milliseconds.
- 47 – Error in script file.
- 49 – Cable not detected
- 50 – S-Record file does not contain valid data.
- 51 – Checksum Verification failure – S-record data does not match MCU memory.
- 52 – Sorting must be enabled to verify flash checksum.
- 53 – S-Records not all in range of module. (see “v” command line parameter)
- 54 – Error detected in settings on command line for port/interface
- 55 – Missing device parameter in script file
- 60 – Error calculating device CRC value
- 61 – Error – Device CRC does not match value given
- 70 – Error – CPROG is already running
- 71 – Error – Must specify both the INTERFACE and PORT on the command line
- 72 – The selected target processor is not supported by the current hardware interface.

## Example Programming Script File

The programming script file should be a pure ASCII file with one command per line. This is the CFG file in the previous examples.

### An example is:

- DEVICE MC56F84769; Select the target device to program CM C:\PEMICRO\freescall\_mc56f84769\_1x\_16x\_80k\_all.DSP;  
Choose Flash Module
- EM; Erase the module
- BM; Blank Check the module
- SS C:\PEMICRO\TEST.S19 ;Specify the S19 to use
- PM; Program the module with the S19
- VM; Verify the module again

### Note:

The path names of files that are relative to the CPROG executable can also be used.

## Using Command-Line Parameters in a Script

A command-line parameter in the form of /PARAMn=s can be used to insert text into the script file in place of special tags. This can be used to replace any part of the script including programming commands, filenames, and parameters. Valid values of n are 0..9. s is a string that will replace any occurrence of /PARAMn in the script file.

As an example, the following generic script could be used for programming with exactly the same functionality of the example script in Section 7 – Example Programming Script File:

- DEVICE /PARAM1;Select target device to program
- CM /PARAM2 ;Choose Flash Module
- EM; Erase the module
- BM; Blank Check the module
- SS /PARAM3 ;Specify the S19 to use
- PM; Program the module with the S19
- /PARAM4; Verify the module again

The following parameters would be added to the CPROG command line:

- /PARAM1=MC56F84769
- /PARAM2=C:\PEMICRO\freescall\_mc56f84769\_1x\_16x80k\_all.DSP
- /PARAM3=C:\PEMICRO\TEST.S19
- /PARAM4=VM

#### NOTE:

If a /PARAMn parameter has a space in its value, the entire parameter needs to be enclosed in double quotations. This indicates to Windows that it is a single parameter. For example, if the path in /PARAM3 above contained a space, you would need to specify it on the command line like this:

"/PARAM3=C:\PEMICRO\EXAMPLE FILES\TEST.S19"

**So the complete example command line would be (note that this is continuous; no line breaks):**

- C:\PEMICRO\CPROGDSC INTERFACE=CYCLONE PORT=USB1 BDM\_SPEED 1
- C:\PROJECT\GENERIC.CFG  
/PARAM1=MC56F84769/PARAM2=C:\PEMICRO\freescall\_mc56f84769\_1x\_16x\_80k\_all.DSP"/PARAM3=C:\PEMICRO\EXAMPLE FILES\TEST.S19" /PARAM4=VM

#### Sample Batch File

Here is an example of calling the command-line programmer and testing its error code return in a simple batch file. Sample batch files are given for both Windows 95/98/XP and Windows 2000/NT/XP/Vista/7/8/10.

##### Windows NT/2000/Vista/7/8/10:

- C:\PROJECT\CPROGDSC C:\PROJECT\ENGINE.CFG INTERFACE=USBMULTILINK PORT=USB1 if errorlevel 1 goto bad goto good: bad
- ECHO BAD BAD BAD BAD BAD BAD BAD BAD: good ECHO done

##### Windows 95/98/ME/XP:

- START /W C:\PROJECT\CPROGDSC C:\PROJECT\ENGINE.CFG INTERFACE=USBMULTILINK PORT=USB1 if errorlevel 1 goto bad goto good: bad
- ECHO BAD BAD BAD BAD BAD BAD BAD BAD: good ECHO done

#### Note:

The path names of files that are relative to the CPROG executable can also be used.

#### Information

For more information on CPROGDSC and PROGDSC please contact us:

##### P&E Microcomputer Systems, Inc.

- 98 Galen St. Watertown, MA 02472-4502 USA.
- **VOICE:** (617) 923-0053
- **FAX:** (617) 923-0808
- **WEB:** <http://www.pemicro.com>.

To view our entire library of DSP modules, go to the Support page of PEmicro's website at [www.pemicro.com/support](http://www.pemicro.com/support).

#### Documents / Resources

[illegible]

4. Connect the hardware interface on the server to your PC and the target(s) to the client via an switch.
5. Start the processing software by running `gffbin2gff` from the Windows Command prompt or by calling the `GFF2GFF` on-line service with the correct command-line parameters. Allowed command-line parameters are:  

```
GFF2GFF [-V] [-Pname] [-GPath Name] [-I] [-out_dir] [-Info_report]
```

[PEmicro PROGDSC Programming Software](#) [pdf] User Guide

PROGDSC Programming Software, PROGDSC, Programming Software, Software

## References

-  [PEmicro | Experts in Embedded tools for Flash Programming and Development](#)
-  [PEmicro | Experts in Embedded tools for Flash Programming and Development](#)

Manuals+,

- [home](#)
- [privacy](#)