



# PELONIS PFS40A4BBB Remote Control Oscillating Stand Up Fan Owner's Manual

[Home](#) » [Pelonis](#) » PELONIS PFS40A4BBB Remote Control Oscillating Stand Up Fan Owner's Manual 

## PELONIS

OWNER'S MANUAL

Stand Fan

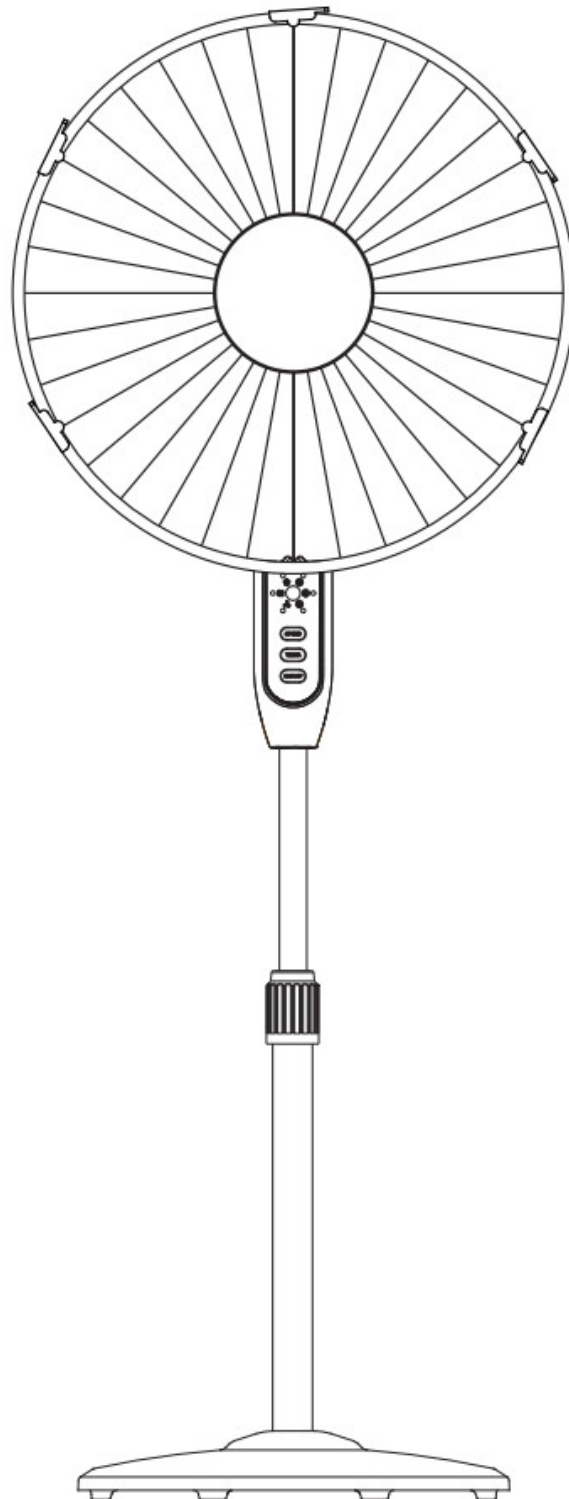
Model: PFS40A4BBB

PFS40A4BWW

### Contents

- [1 PFS40A4BBB Remote Control Oscillating Stand Up Fan](#)
- [2 RULES FOR SAFE OPERATION](#)
- [3 INSTALLATION INSTRUCTIONS](#)
- [4 INSTRUCTIONS FOR USE](#)
- [5 USER SERVICING INSTRUCTIONS](#)
- [6 CLEANING](#)
- [7 SERVICE & SUPPORT](#)
- [8 Documents / Resources](#)
  - [8.1 References](#)

**PFS40A4BBB Remote Control Oscillating Stand Up Fan**



**READ AND SAVE THESE INSTRUCTIONS**

**CAUTION**

Read Rules for Safe Operation and Instructions Carefully.

**WARNING**

This appliance has a polarized plug (one blade is wider than the other). To reduce the risk of electric shock, this plug is intended to fit in a polarized outlet only one way. If plug does not fit fully in the outlet, reverse the plug. If it still does not fit, contact a qualified electrician. Do not attempt to defeat this safety feature.

**WARNING:** To Reduce The Risk Of Fire Or Electric Shock, Do Not Use This Fan With Any Solid-State Speed Control Device.

**RULES FOR SAFE OPERATION**

1. Never insert fingers, pencils, or any other object through the grille when fan is running.

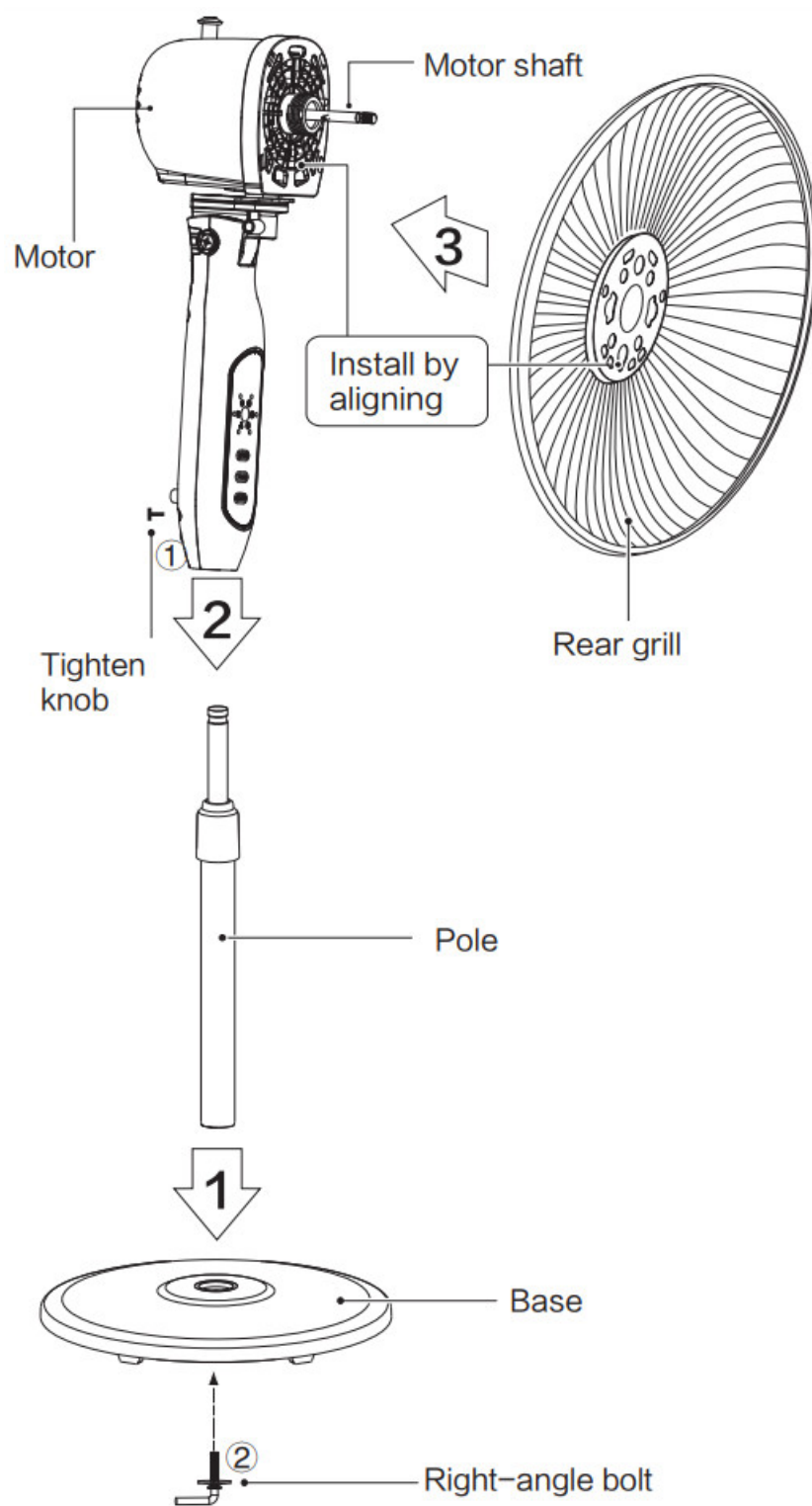
2. Disconnect fan when moving from one location to another.
3. Disconnect fan when removing grilles for cleaning.
4. Be sure fan is on a stable surface when operating to avoid overturning.
5. Do not use fan in window. Rain may create electrical hazard.
6. Ensure that the fan is switched off from the supply mains before removing the grille.

The rules about cord and plug as below:

1. This product employs overload protection (fuse). A blown fuse indicates an overload or short-circuit situation. If the fuse blows, unplug the product from the outlet. Replace the fuse as per the user servicing instructions (follow product marking for proper fuse rating) and check the products. If the replacement fuse blows, a short-circuit may be present and the product should be discarded or returned to an authorized service facility for examination and/or repair.
2. Do not operate any fan with a damaged cord or plug. Discard fan or return to an authorized service facility for examination and/or repair.
3. Do not run cord under carpeting. Do not cover cord with throw rugs, runners, or similar coverings. Do not route cord under furniture or appliances. Arrange cord away from traffic area and where it will be tripped over.

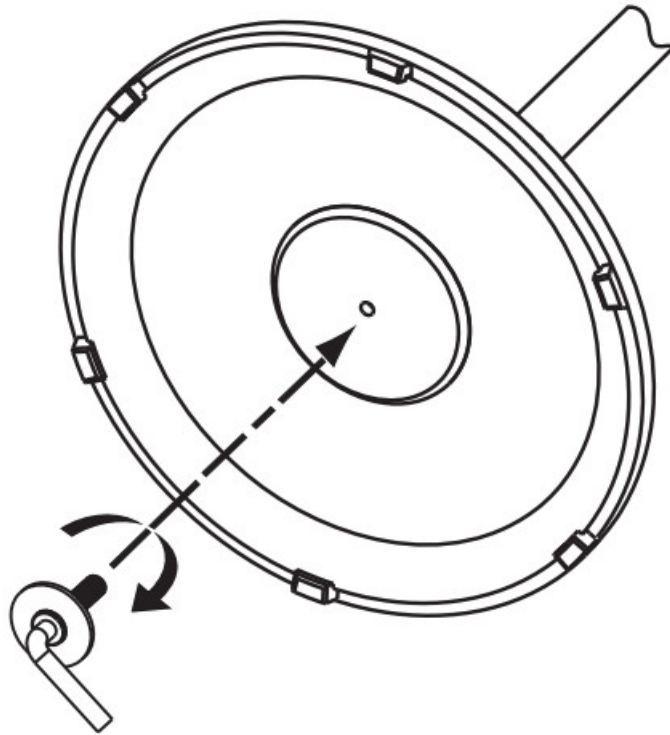
## **INSTALLATION INSTRUCTIONS**

### **Name of components**



### Base Installation

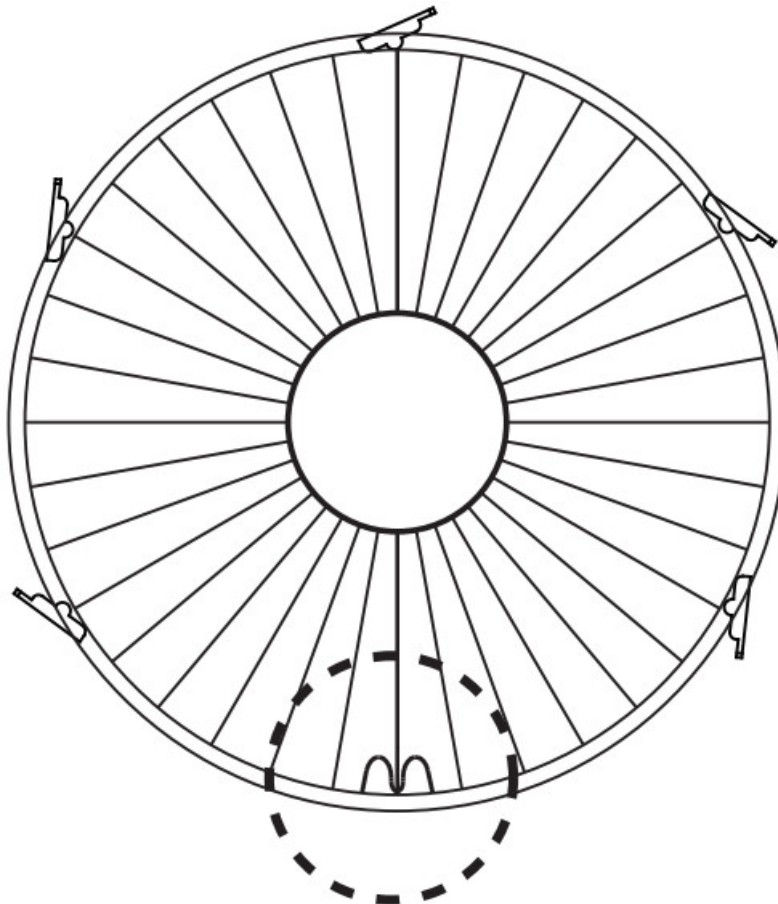
Align the column with the groove on the base and fix them together using a right-angle bolt.



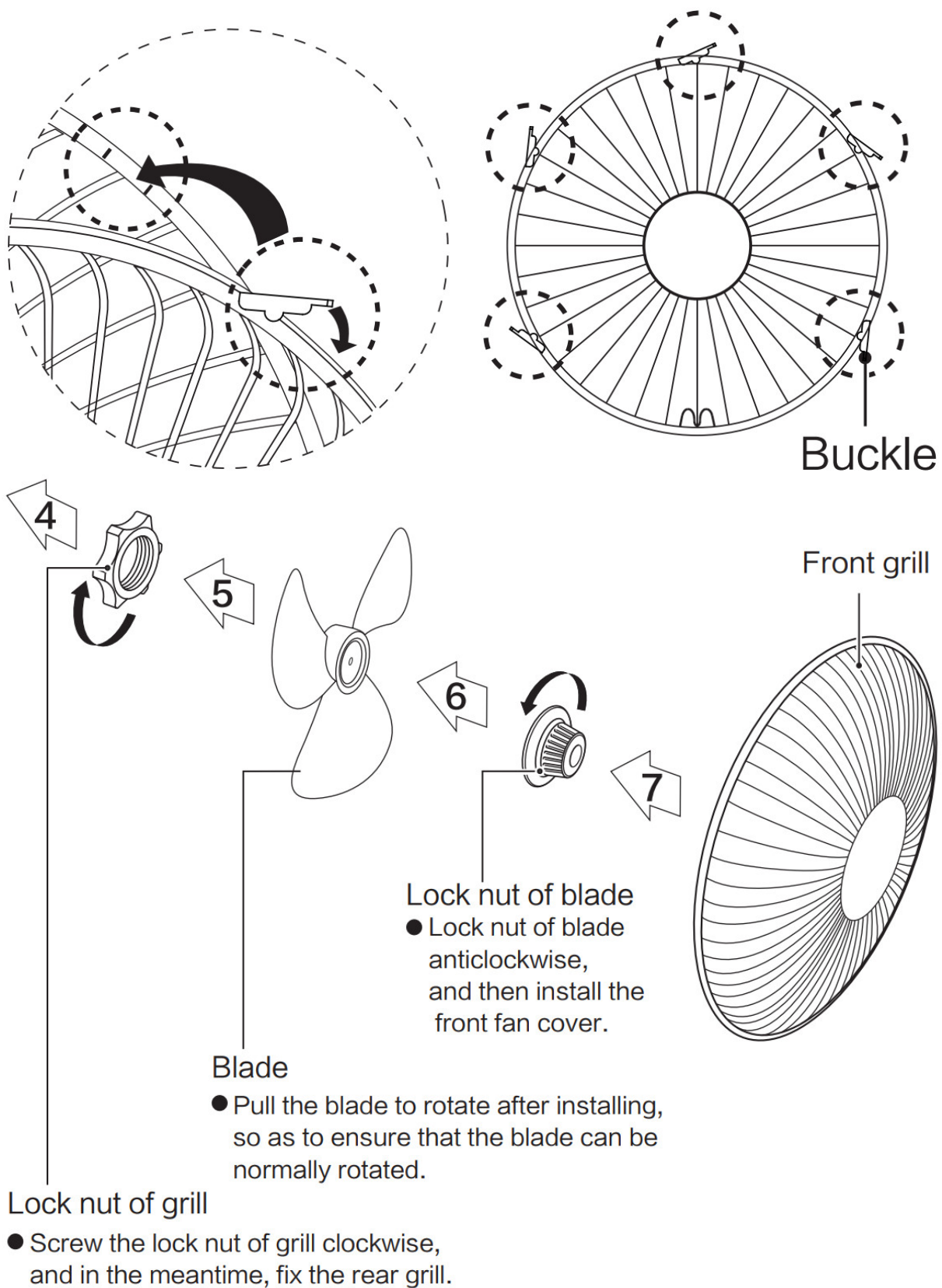
Considerate Hint: Remove ①②parts from the component before performing installation.

### Front and Rear Guard Installation

1. Align Screw Holes on the outer ring of both the Front and Rear Guards, with the Positioning Clip aligned as illustrated.

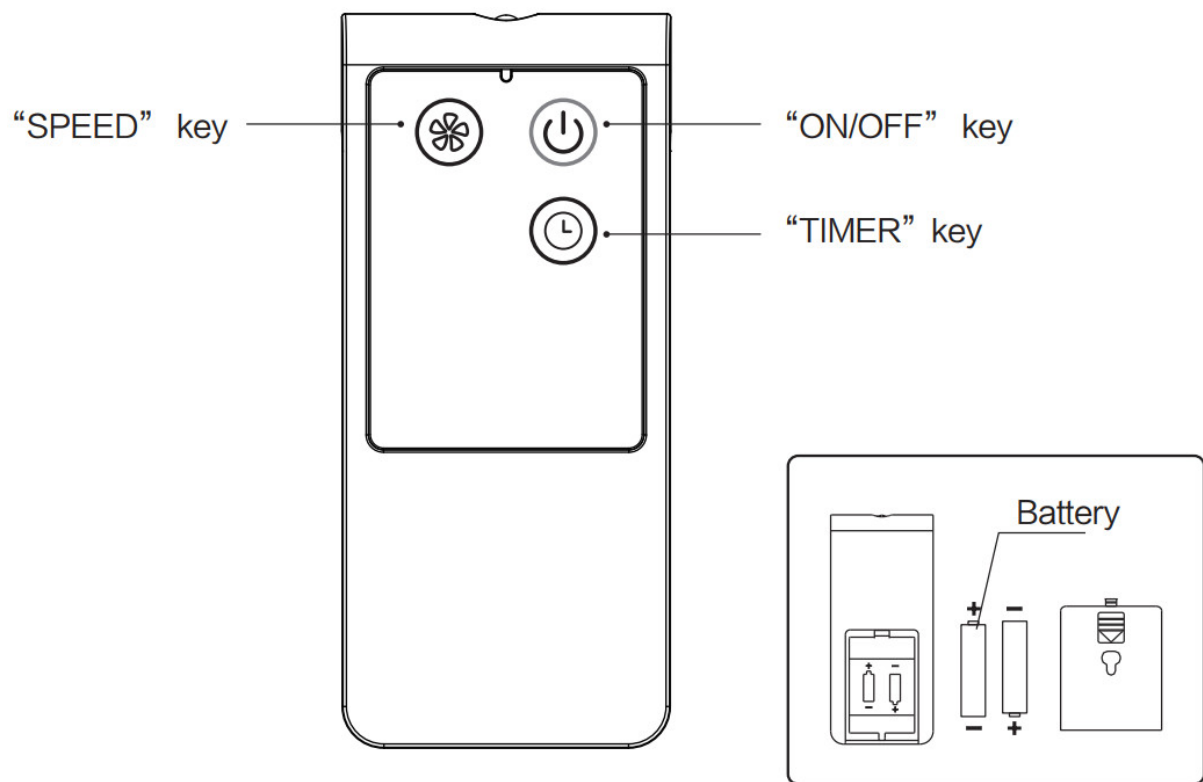


2. Press down all the Buckles to fasten the Front Guard with the Rear Guard. At the Screw Holes, tighten the separated screw and nut.



## INSTRUCTIONS FOR USE

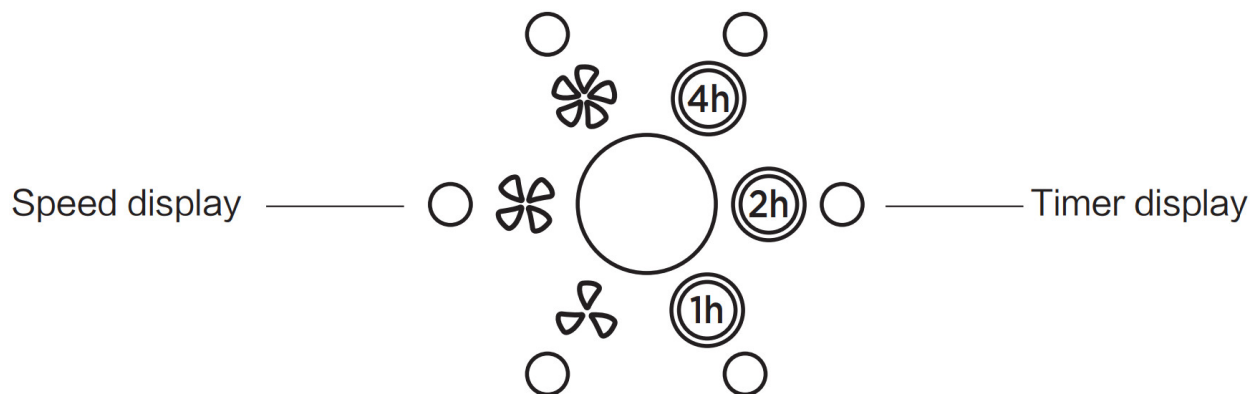
### Instructions for key of remote controller



Considerate Hint:

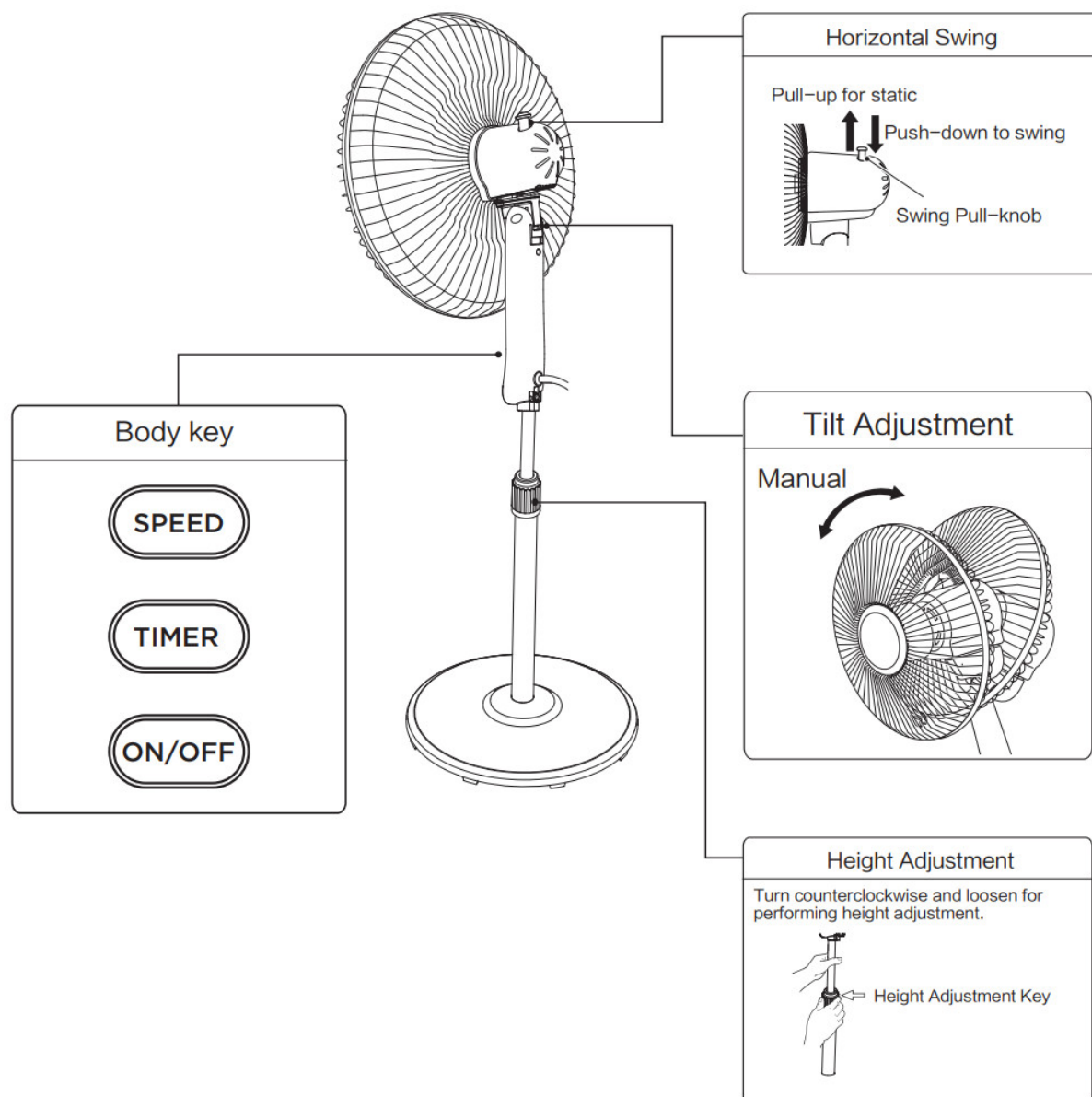
Effective Range of Remote Control: within 5 m distance and 30-degree deflection in front of Product.

### Instructions for display of body

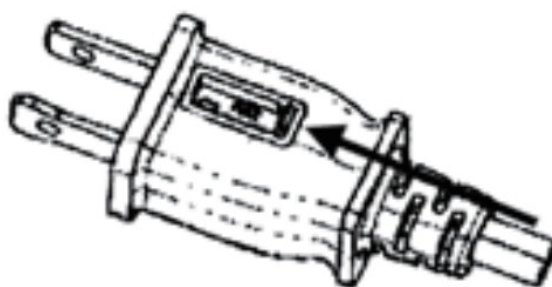


### Instructions for operation of body





## USER SERVICING INSTRUCTIONS



- Grasp plug and remove from the receptacle or other outlet device. Do not unplug by pulling on cord.
- Open fuse cover. Slide open fuse access cover on top of attachment plug towards blades.
- Remove fuse carefully. Insert the tip of your tool into fuse slot (close with the terminal), then prize the fuse gradually and slowly, but not overexert. If you feel tight, you can try it at several times and prize the fuse little by little. When one side of the fuse has been prized, then you can get the fuse out entirely.
- Risk of fire. Replace fuse only with 2.5 Amp, 125 Volt fuse.
- Close fuse cover. Slide closed the fuse access cover on top of attachment plug.
- Risk of fire. Do not replace attachment plug. Contains a safety device (fuse) that should not be removed. Discard product if the attachment plug is damaged.

### Notice:



1. When you replace the fuse, please don't operate suddenly or overexert, or else the product will be damage or cause accident.
2. When you feel it hard to be operated, please make sure you have got the right way.

## CLEANING

1. Be sure to unplug from the electrical supply source before cleaning.
2. Plastic parts should be cleaned with mild soap and a damp cloth or sponge.  
Thoroughly to remove soap film with clean water.
3. Be sure not to make water or other liquid enter inside of motor.

## SERVICE & SUPPORT

In the event of a warranty claim or if service is required for this heater, please contact us at the following:

Tel: 1-866-646-4332

Email us at: [customersupport@pelonis.com](mailto:customersupport@pelonis.com)

For questions or comments, please write to:

Midea America Corporation

5 Sylvan Way, Parisippany, NJ 07054

For your records, staple your sales receipt to this manual and record the following:

DATE OF PURCHASE: \_\_\_\_\_

PLACE OF PURCHASE: \_\_\_\_\_


(STAPLE SALES RECEIPT HERE)

**NOTE:** PROOF OF PURCHASE IS REQUIRED FOR ALL WARRANTY CLAIMS

Printed in China

---

## Documents / Resources

	<p><a href="#">PELONIS PFS40A4BBB Remote Control Oscillating Stand Up Fan</a> [pdf] Owner's Manual PFS40A4BBB, PFS40A4BWW, PFS40A4BBB Remote Control Oscillating Stand Up Fan, PFS40A4BBB, Remote Control Oscillating Stand Up Fan, Control Oscillating Stand Up Fan, Oscillating Stand Up Fan, Stand Up Fan, Fan</p>
---	---

## References

- [User Manual](#)