



pegperego YPSI Multifunctional Single Stroller Instructions

[Home](#) » [PegPerego](#) » pegperego YPSI Multifunctional Single Stroller Instructions 

pegperego YPSI Multifunctional Single Stroller



pegperego YPSI Multifunctional Single Stroller

WARNINGS

- **IMPORTANT – READ CAREFULLY AND KEEP FOR FUTURE REFERENCE.**

The child's safety could be at risk if these instructions are not followed.

- This product was designed for the transport of 1 child in the seat.
- Do not use this item for a number of occupants exceeding that envisaged by the manufacturer.
- WARNING The assembly and preparation of the product must be carried out by an adult.
- Do not use this product if there are parts missing or signs of breakage.
- WARNING Ensure that all the locking devices are engaged before use.
- WARNING Check that the pram body or seat unit or car seat attachment devices are correctly engaged before use.
- Always apply the brake when stationary and when loading or unloading children.

- Do not insert fingers into the mechanisms.
- Any load applied to the handle and/or the backrest and/or laterally to the product can compromise the stability of the product.
- Do not load the baskets over 10 Kg. Do not put weight in the cup holder (if present) in excess of those indicated on the cup holders themselves and never hot drinks. Do not put loads of more than 0.2 Kg in the hood pockets (if present).
- **WARNING To avoid injury ensure that the child is kept away when unfolding and folding this product**
- **WARNING Do not let the child play with this product .**
This product is not a toy.
- **WARNING Never leave the child unattended.**
- Be careful not to hurt the child when adjusting the mechanisms (handlebar, backrest ...).
- Do not use the product near to stairs or steps, heat sources, naked flames or dangerous objects within reach of the child.
- Only replacement parts supplied or recommended by the manufacturer/distributor shall be used.
- **WARNING This product is not suitable for running or skating.**
- WARNING Do not add any mattress not approved by the manufacturer.
- Do not use accessories which are not approved by the manufacturer.

Ypsi (Chassis + Seat):

This product is suitable from 6 months up to 22 kg or 4 years, whichever comes first.
For babies weighing more than 15 kg, direct and use the seat exclusively following the direction of travel.

- WARNING: This seat unit is not suitable for children under 6 months.
- WARNING: Always use the restraint system. Always use the five-point safety harness.
Always lock the waist strap with the crotch strap.
- The front bar has not been designed to support the child's weight; the front bar has not been designed to lift the seat with the child's weight. The front bar does not replace the seat belt.
- WARNING: do not use the rain canopy (if present) in interiors and check the child is not too hot; do not leave near sources of heat and keep away from cigarettes. The rain canopy must not be used on a stroller without a hood or parasol it can attach to. Use the rain canopy only under adult supervision. Check the rain canopy does not interfere with any moving mechanism in the chassis or stroller. Remove the rain canopy before folding the chassis or stroller.

Ypsi Chassis + Car Seat:

is approved for children from birth up to 13 kg of weight. When used in combination with the car seat, this product does not replace a cot or a bed. Should your child need to sleep, then it should be placed in a suitable pram body, cot or bed.

Ypsi Chassis + Ypsi Bassinet:

is approved for children from birth up to 9 kg of weight.

When used in combination with the pram body: this product is suitable for a child who cannot sit up by itself, roll over and cannot push itself up on its hands and knees. Maximum weight of the child: 9 kg. The carrying handle (if present) should be left outside the pram body and out of the child's reach during use.

The images referring to the textile details may differ from the collection purchased.

For more information, consult our website:

www.pegperego.com

Contents

1 INSTRUCTIONS YPSI CHASSIS

2 INSTRUCTIONS YPSI SEAT

3 THE ORIGINAL ACCESSORY

PEGPEREGO

4 CLEANING AND MAINTENANCE

5 Documents / Resources

5.1 References

6 Related Posts

INSTRUCTIONS YPSI CHASSIS

1. **OPENING:** Before opening the frame, if present, remove (without using blades) all die-cut cardboard.

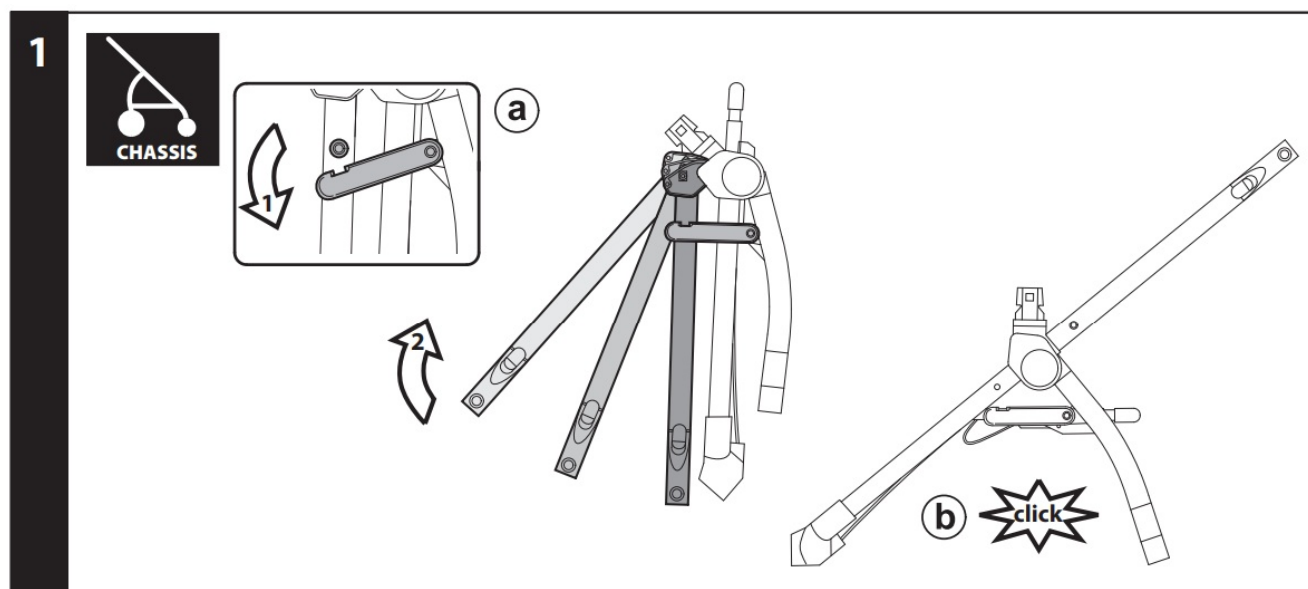
WARNING:

_ DO NOT PULL OR FORCE THE FASTENER BEYOND ITS LIMIT.

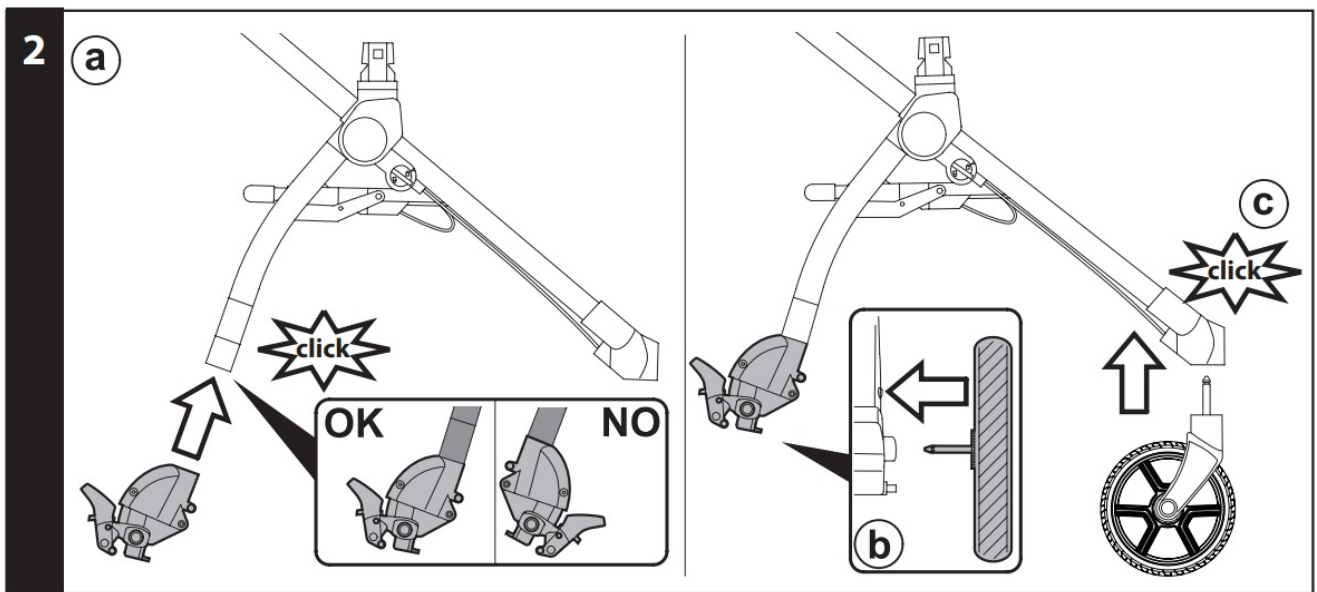
_ DO NOT USE THE FASTENER AS A HANDLE BAR FOR TRANSPORT OR TO CARRY WEIGHTS.

DO NOT HANG BAGS OR OTHER ACCESSORIES ON THIS ELEMENT.

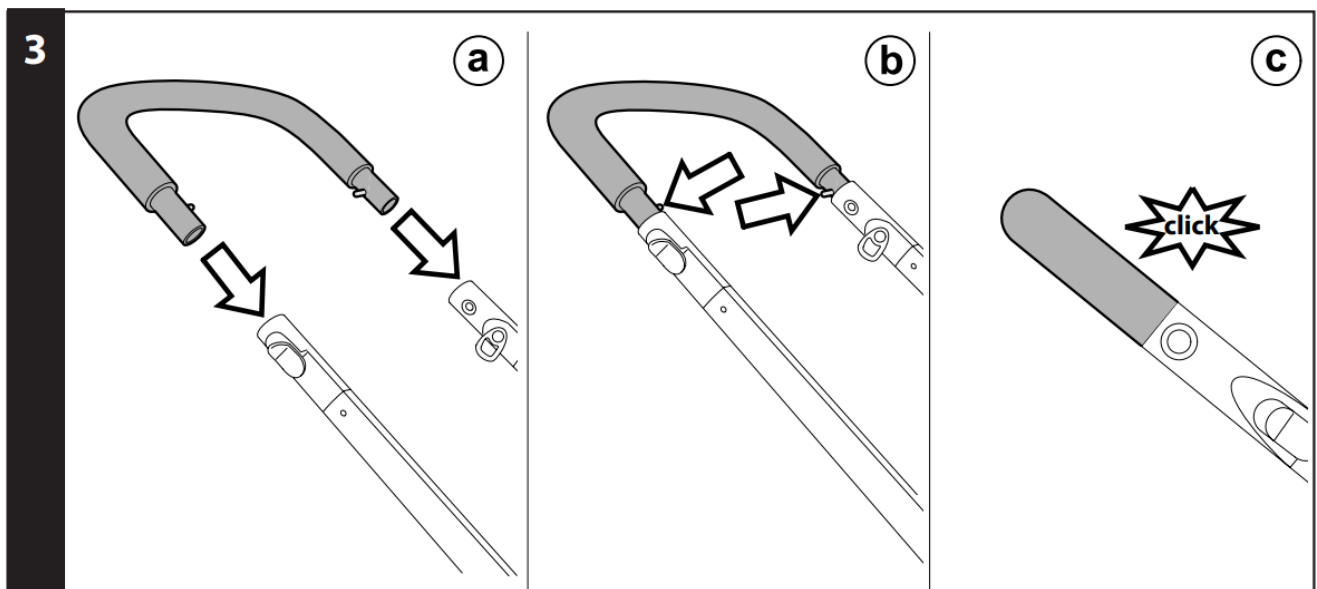
Press the side fastener downwards, grip the upper ends of the handle bar and rotate them towards you until the chassis has opened completely (fig_a). Opened chassis (fig_b). The chassis is opened correctly when you hear a click, which corresponds to the handle bar frame attaching – please look at the picture.



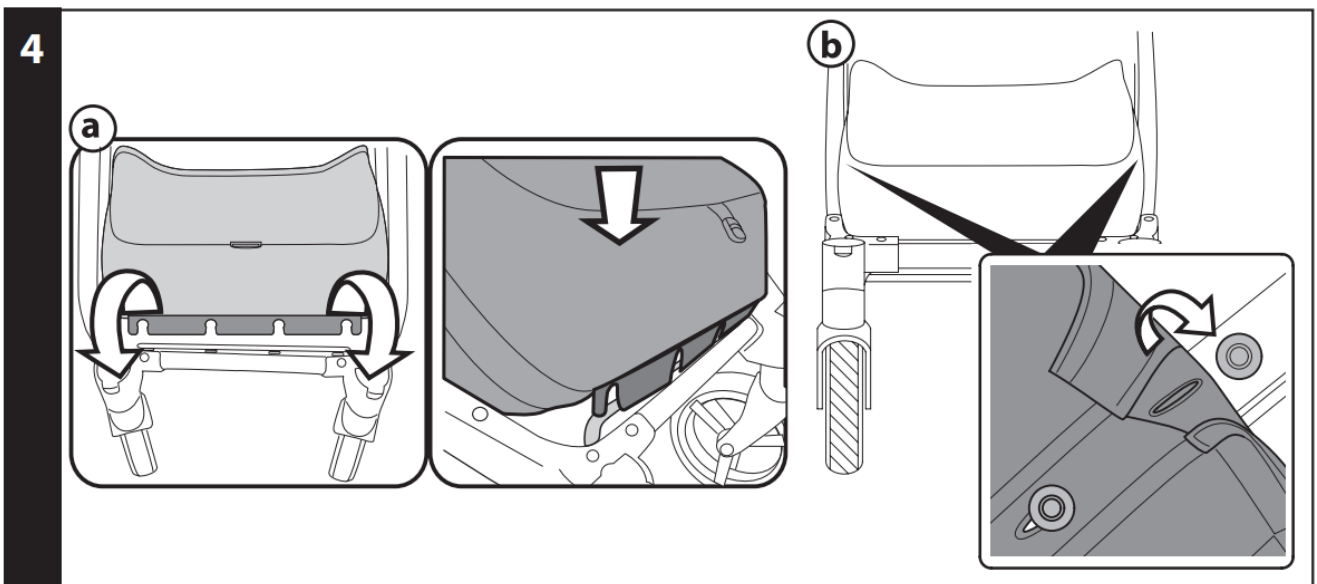
2. **FITTING THE WHEELS:** slot the rear wheel crosspiece onto the uprights (fig_a), ensuring that it is facing the right way, then attach the rear wheels until they click into place (fig_b) . To assemble the front wheels, fit them into the slots until they lock into place (fig_c).



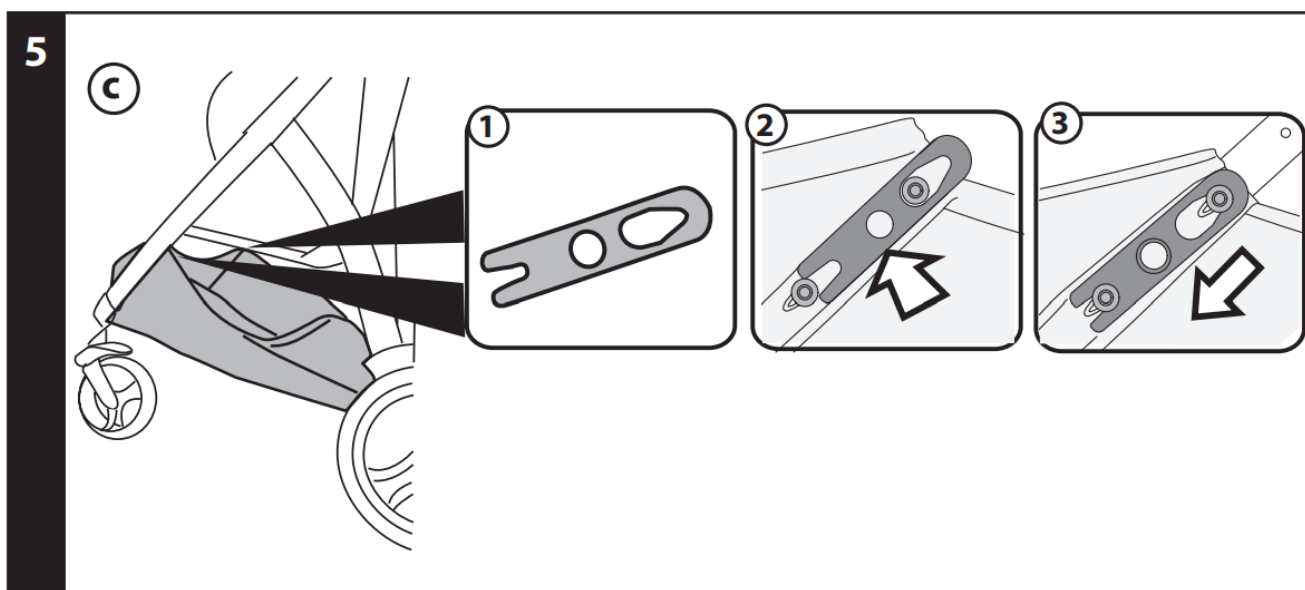
3. **FITTING THE HANDLE BAR:** insert the handlebar into the frame (fig_a) as shown in the picture. For the attachment to be complete, press the two buttons on the side of the handle bar (fig_b) and press the handle bar until you hear it click (fig_c)



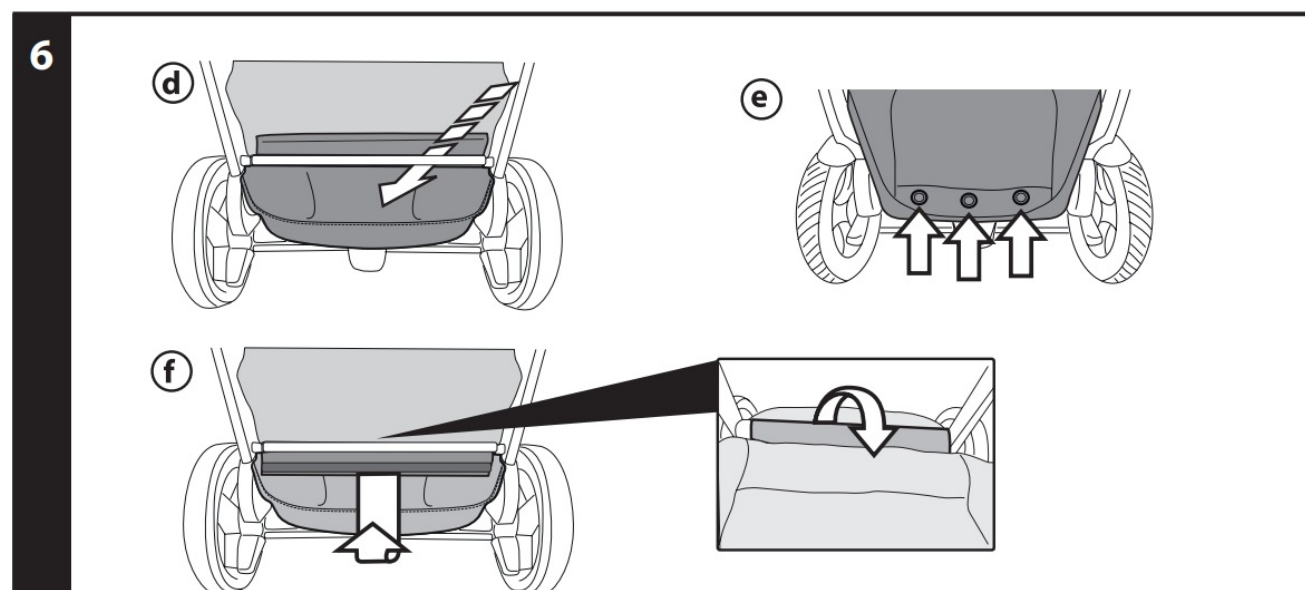
4. **BASKET ASSEMBLY:** Slip the basket flap into the slot along the front bar of the chassis (Fig_a) Fasten the basket eyelets to the buttons on each side of the frame (fig_b).



5. To complete the basket attachment procedure for the front part, you are required to insert the supplied tie (fig_1) as follows:
position it between the basket and buttons, as shown (fig_2) and use your finger to push downwards, so as to complete the attachment procedure (fig_3). Repeat the same procedure for the other side of the basket.

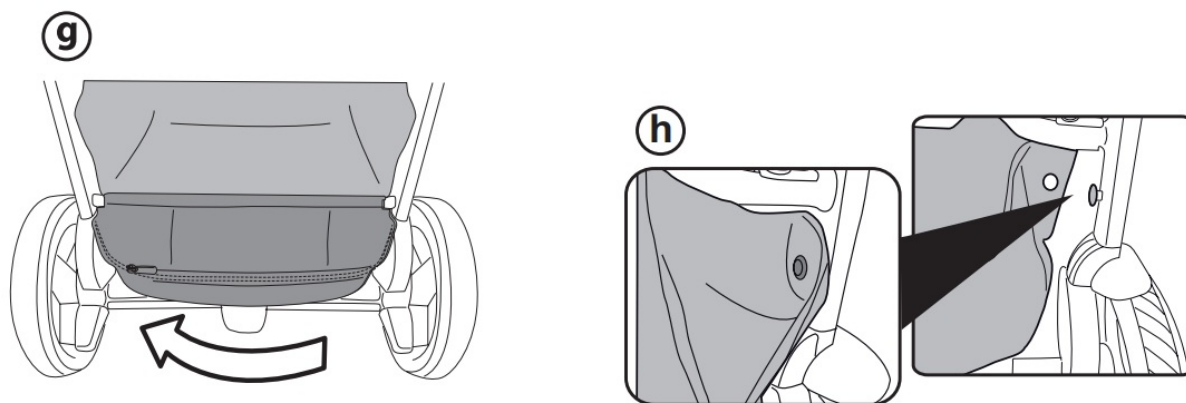


6. Slip the back section of the pouch under the bar (fig.d).
Fasten the three buttons at the base of the chassis (Fig.e). Fasten the Velcro strap in the inside of the basket, positioning the fabric as shown in the picture (Fig.f).



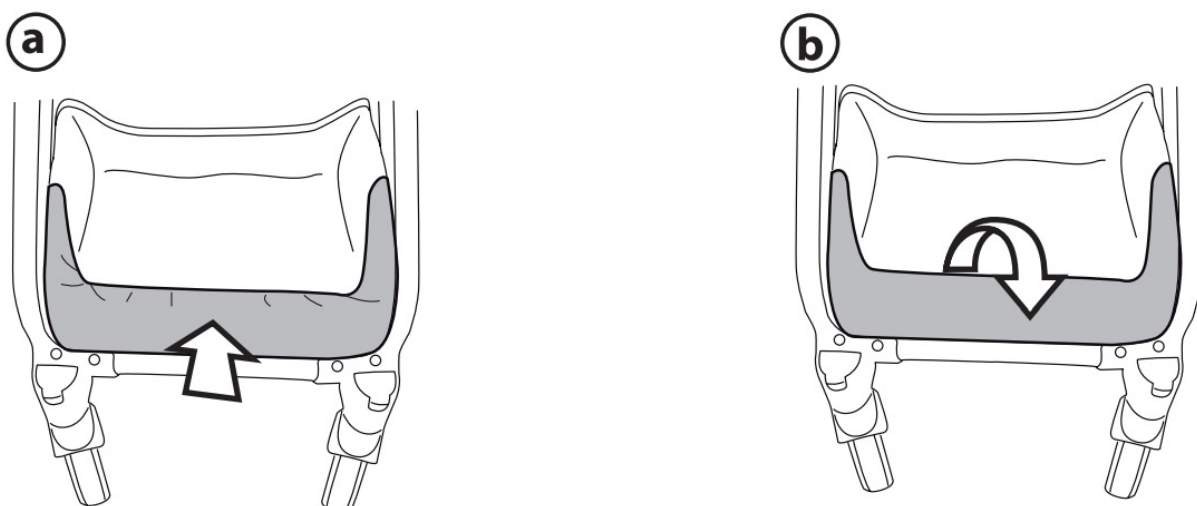
7. Close the pouch zip (fig.g).
Finally, to complete basket attachment, fasten the basket buttons on both sides onto the chassis (fig.h).
WARNING! If you do not hook the basket on correctly, as shown, the basket will be unable to support the weight of loads placed in it.

7



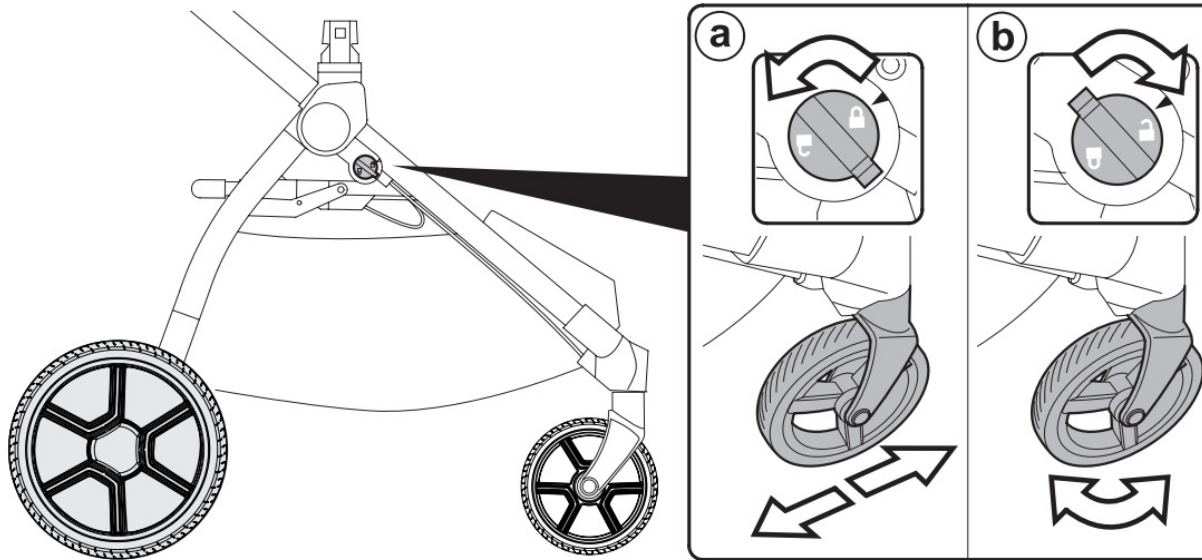
8. The section of the front basket can be lowered (fig.a) or raised (fig.b).

8



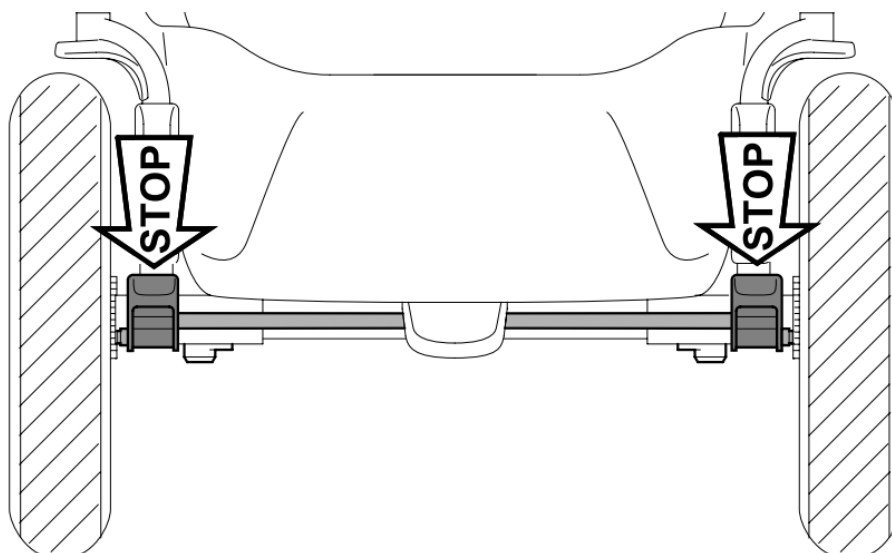
9. FIXED OR SWIVELLING FRONT WHEELS: to lock the front wheels, rotate the lever anticlockwise onto the locked padlock (fig_a), to release the wheels – turn the lever clockwise to the unlocked padlock (fig_b). On difficult terrain, we recommend using fixed wheels.

9



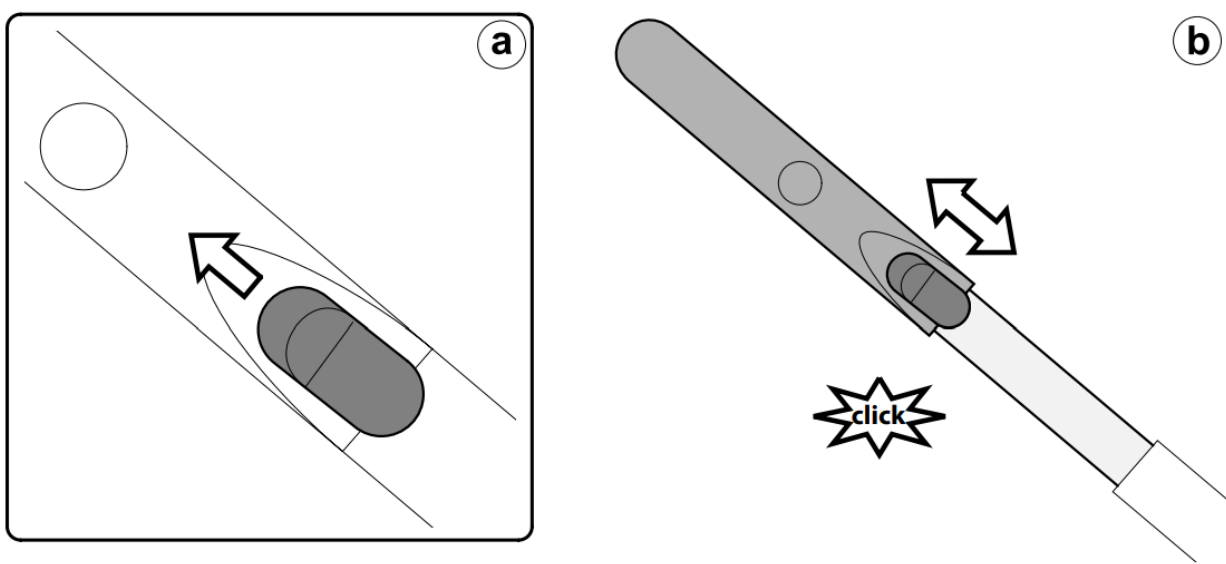
10. BRAKE: press the lever down to apply the brake and lock the frame. Do the opposite to release the brake.

10



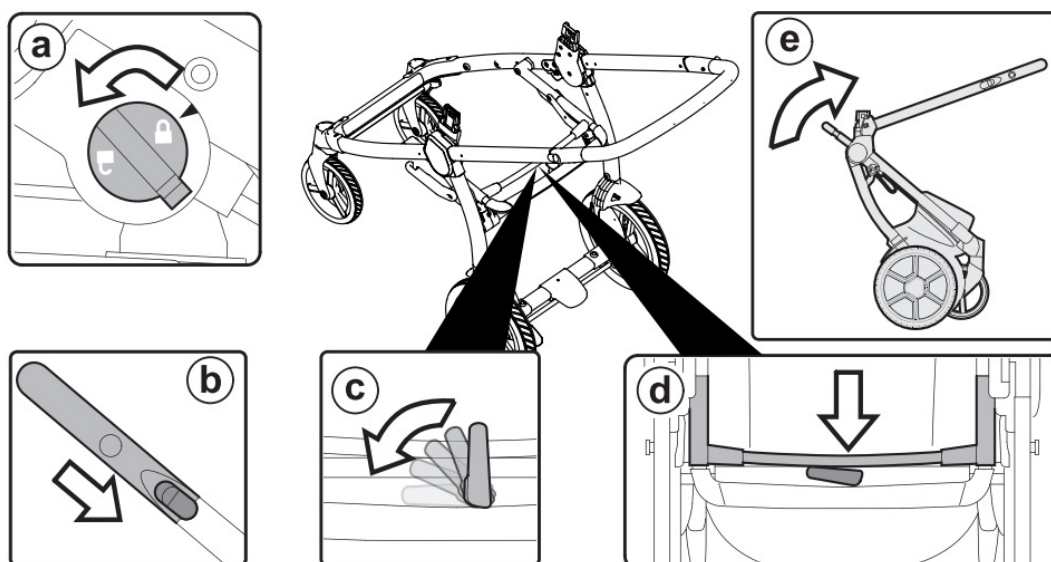
11. ADJUSTABLE HANDLE BAR: to adjust the height of the handlebar, pull the levers towards you (fig_a) and move the handle bar until it clicks (fig_b). The handle bar can be adjusted in several positions.

11

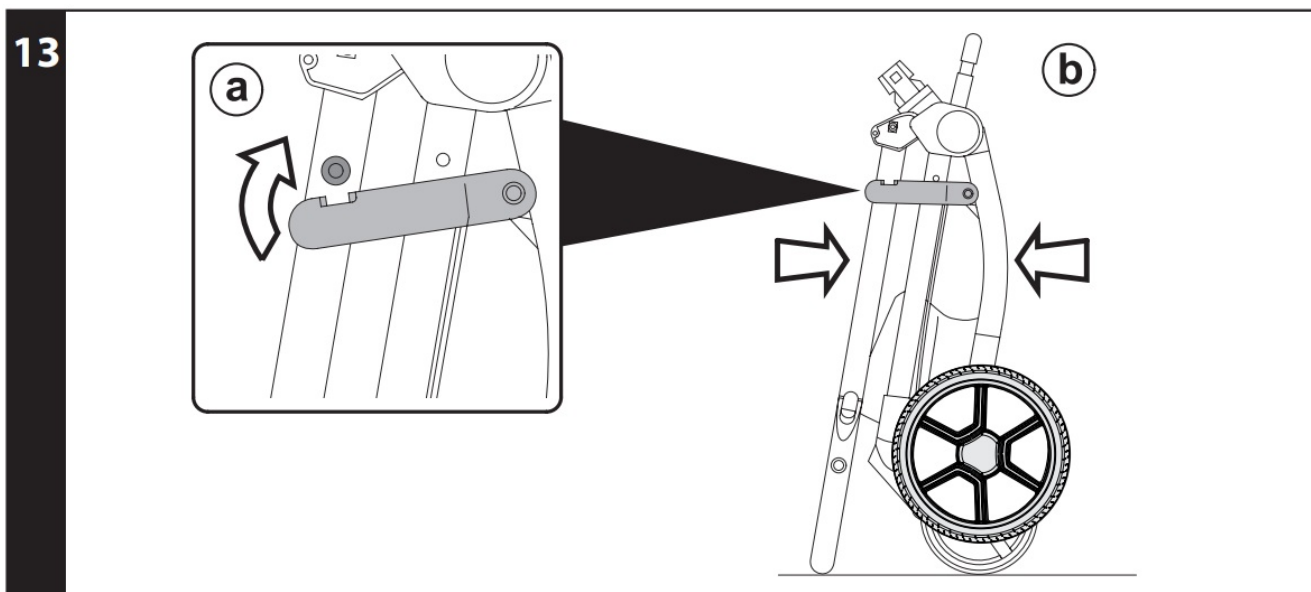


12. FOLDING: lock the front wheels into fixed position (fig_a), put the handle bar to its lowest position (fig b). Rotate the safety lever to the left (fig_c) and pull the frame's internal handle towards you (fig_d). Lift the handle until the frame is completely folded (fig_e).

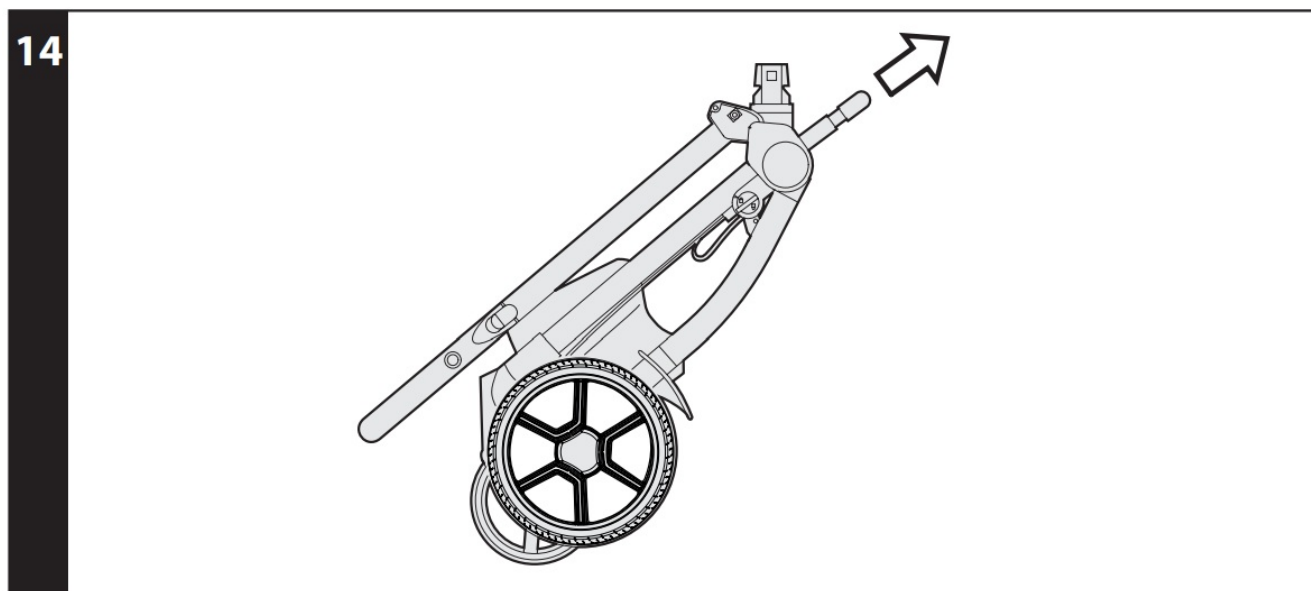
12



13. To fold correctly, make sure the side hook is engaged (fig_a). When folded, the chassis will stand upright (fig_b).

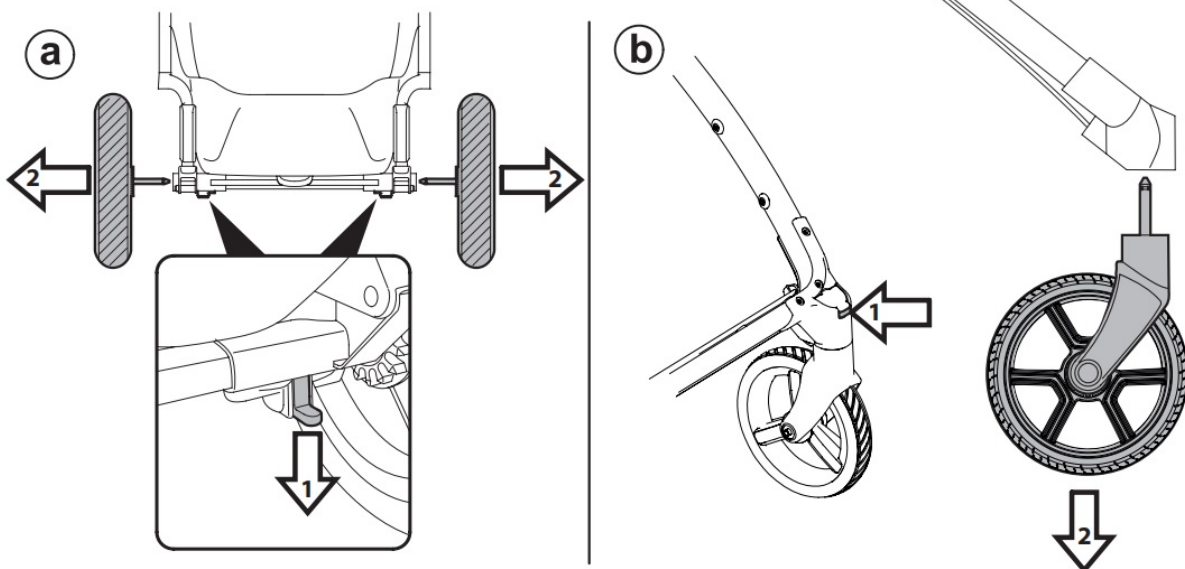


14. TRANSPORT: the stroller can be conveniently carried (with the front wheels in fixed position) using the central handle bar



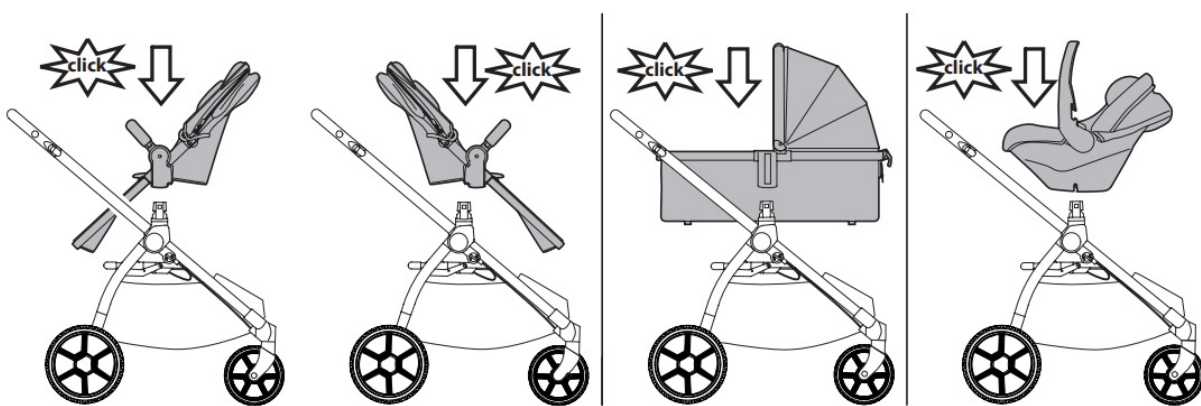
15. All the wheels can be removed to reduce dimensions further. To remove the back wheels: pull the lever downwards and remove the wheel as illustrated (fig_a). To remove the front wheels: press the tab as shown and remove the wheels (fig_b).

15



16. POSSIBLE USES SERIAL NUMBERS

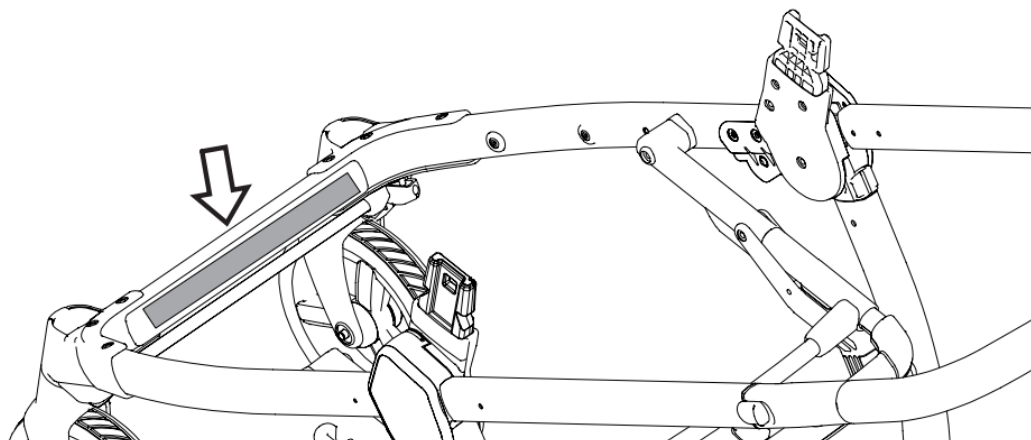
16



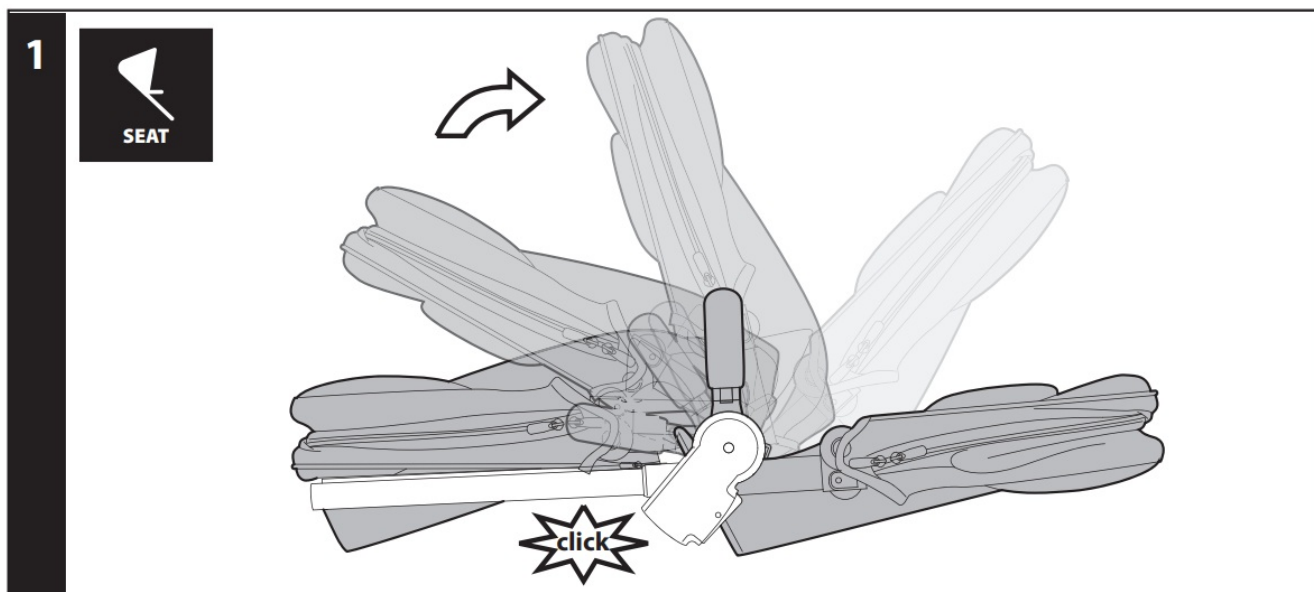
17. Ypsi Chassis, has the information on the product's production date on the lower part of the frame.

_ Product name, production date and serial number of the chassis.

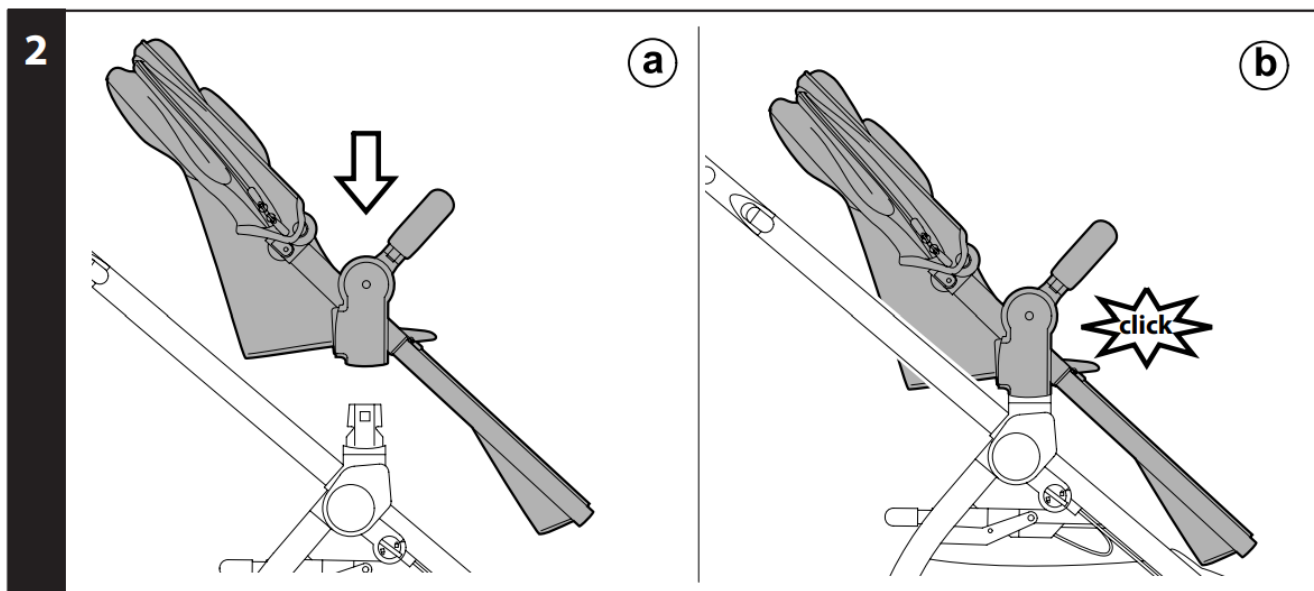
17



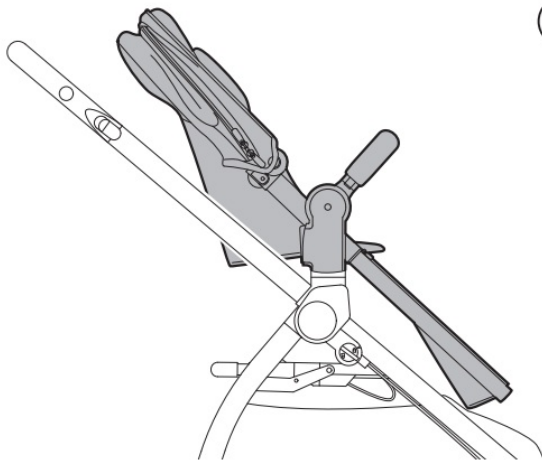
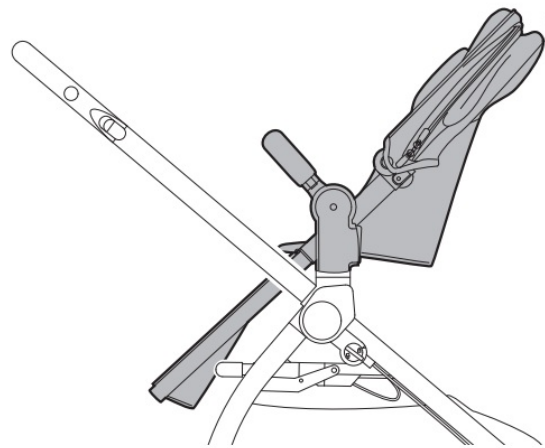
1. **OPENING:** Before opening the Ypsi Seat, remove (without using blades) any die-cut cardboard. Open the seat from the ends, pulling until it clicks.



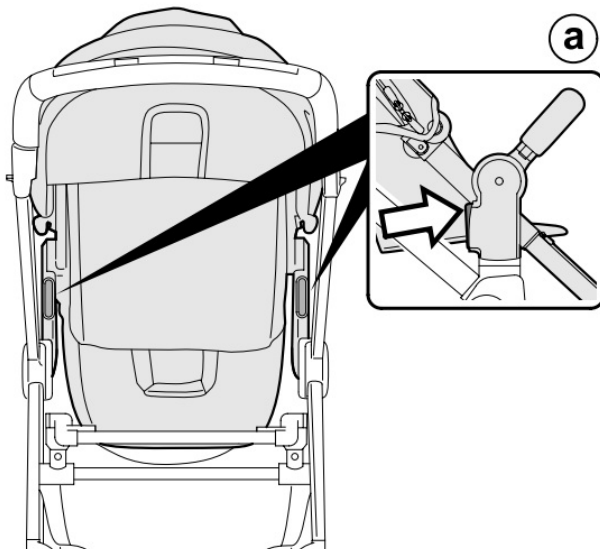
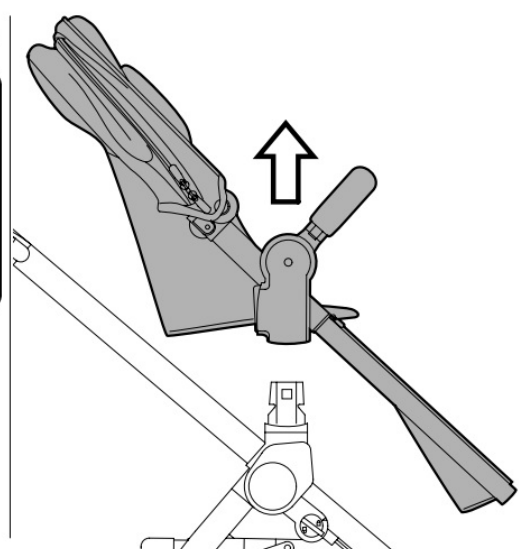
2. **ATTACHING THE SEAT ONTO THE CHASSIS:** To fasten the Ypsi Seat, position it on the chassis (fig_a) and press down with both hands until it clicks (fig_b). Ensure the Ypsi Seat is properly attached.



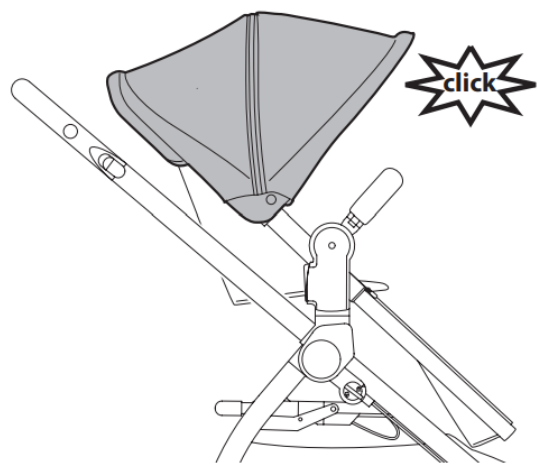
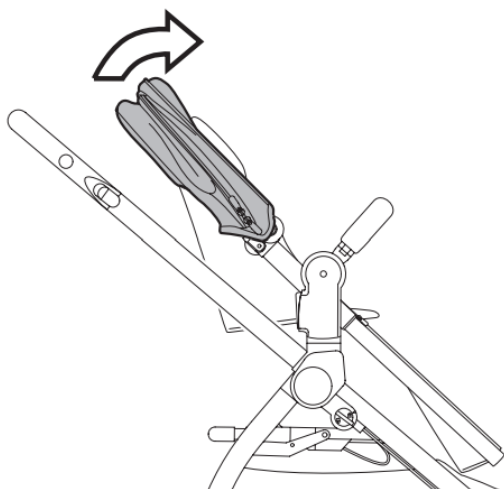
3. The Ypsi Seat can be attached onto the chassis in “world-facing” (fig_a) or “mum-facing” position (fig_b). Always engage the brake on the chassis before fastening and unfastening the seat.

3**(a)****(b)**

4. **REMOVING THE YPSI SEAT FROM THE CHASSIS:** To unfasten the Ypsi Seat, press the levers near the chassis attachments (fig_a) and lift the seat at the same time (fig_b).

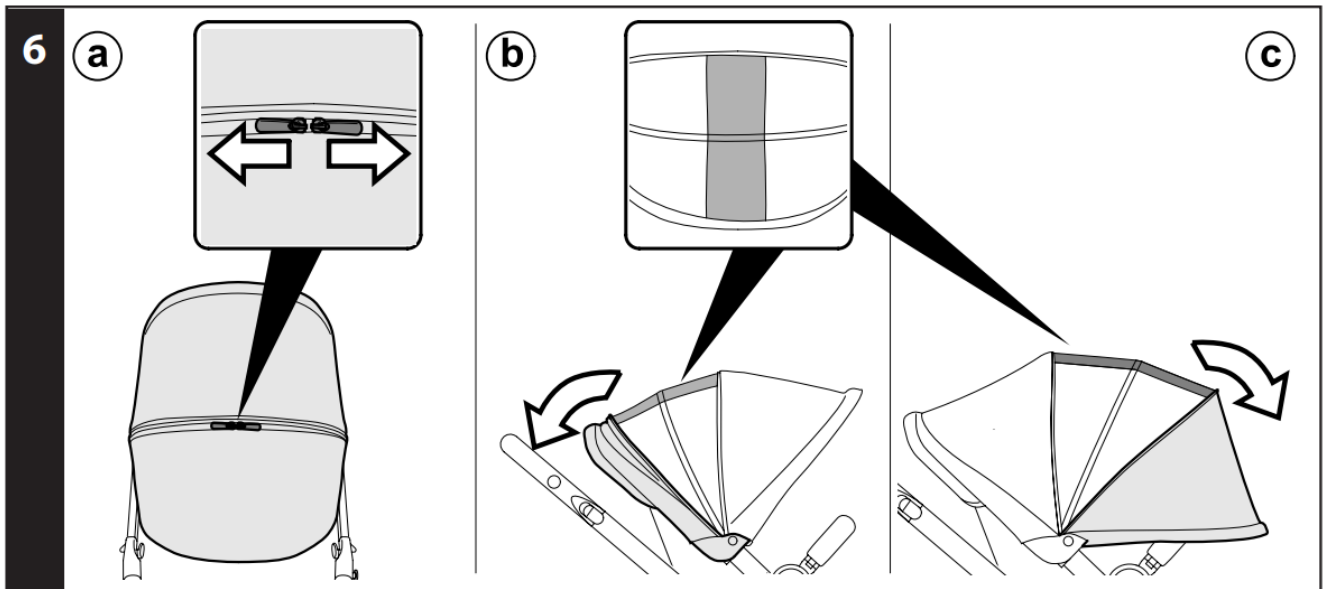
4**(a)****(b)**

5. **HOOD:** to use the hood, stretch it until it clicks (so it is completely open).

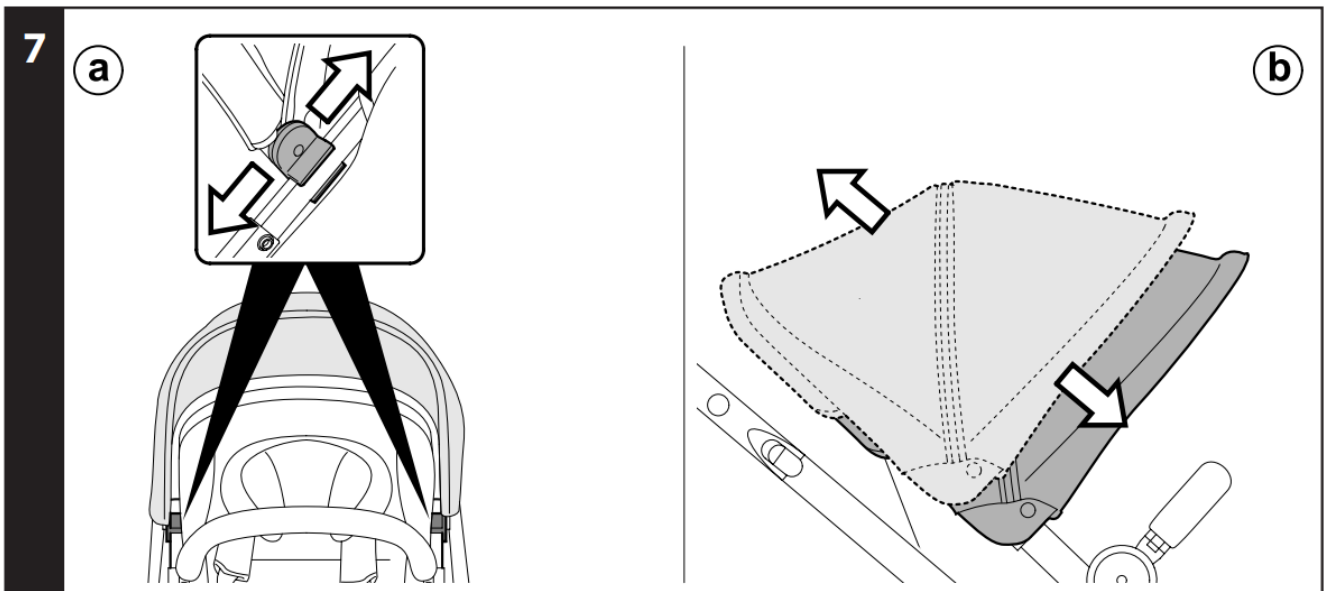
5

6. The hood comes with a mesh insert so that the baby can be seen from any position. To use it, open the zips (fig_a) and slide the hood's insert backwards (fig_b). Alternatively, the hood can be stretched further forwards

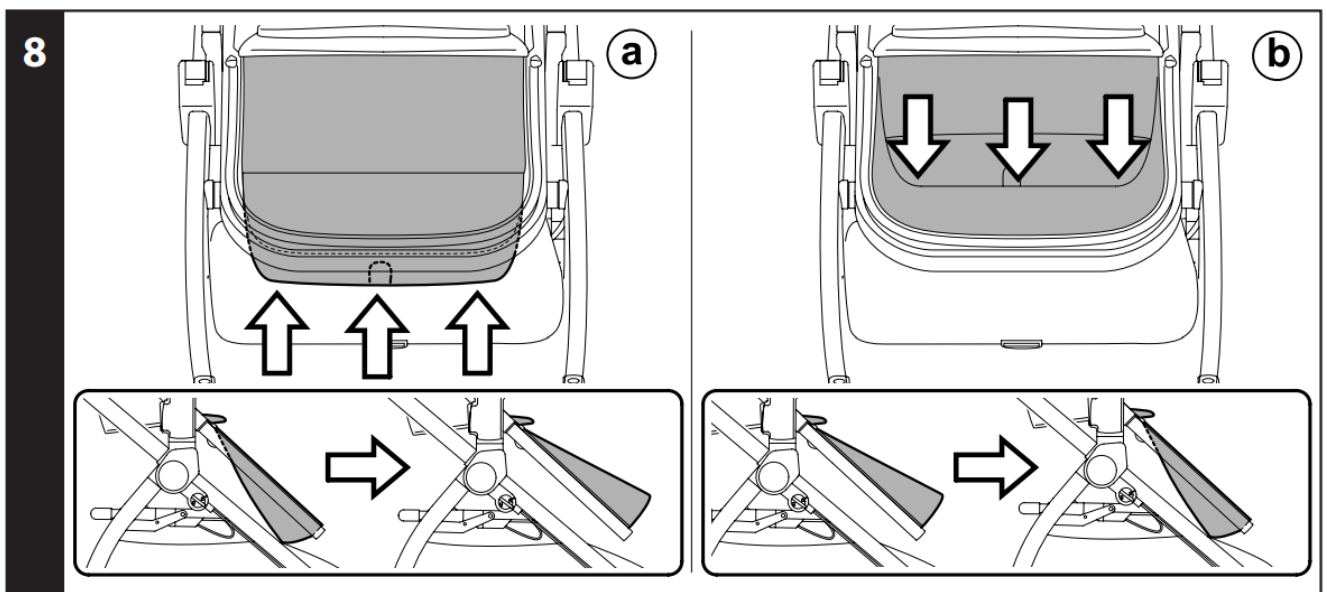
(fig_c).



7. Sliding the hood's attachments on the uprights(fig_a), you can vary its distance from the seat (fig_b).

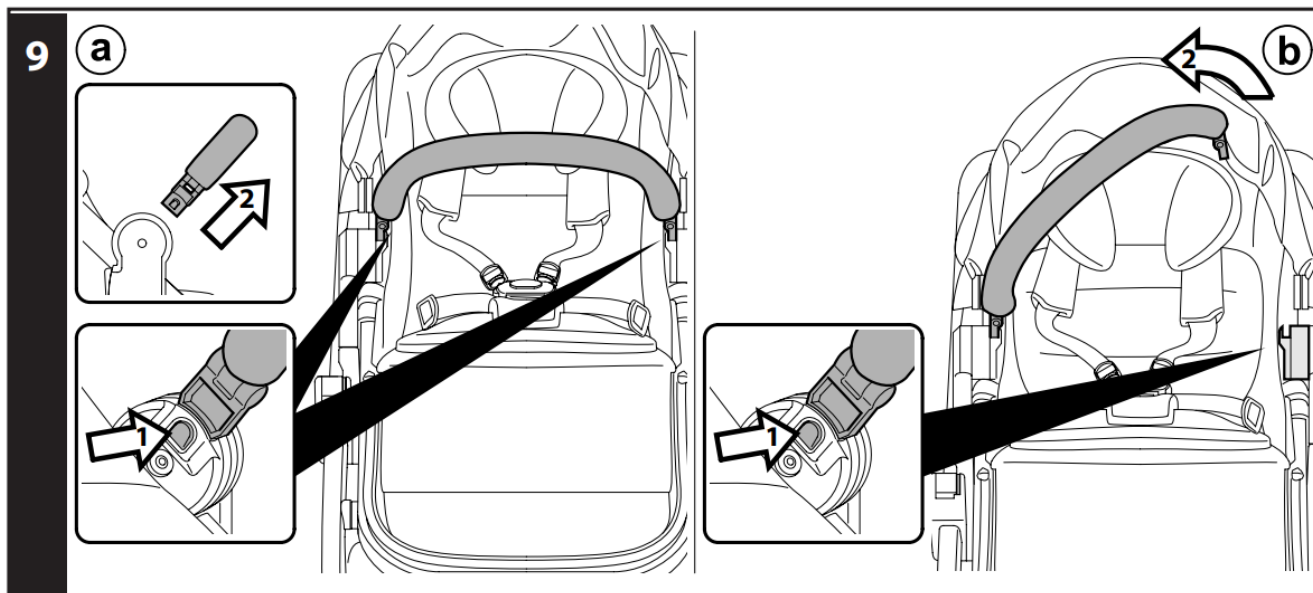


8. **ADJUSTING THE LEG REST:** To switch from “sitting” to “lying” or vice versa, simply press on the leg rest to obtain the configuration you wish.

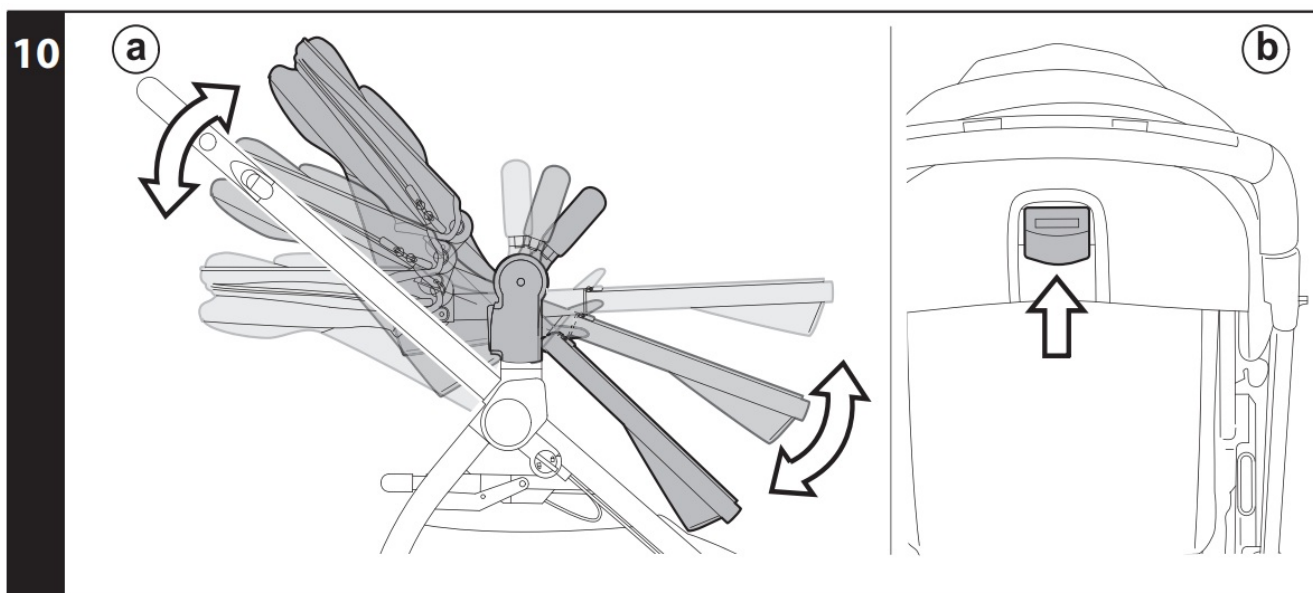


9. **FRONT BAR:** The front bar can be removed by pushing the buttons on the sides (fig_a), or it can be opened on

one side pressing one button only (fig_b).

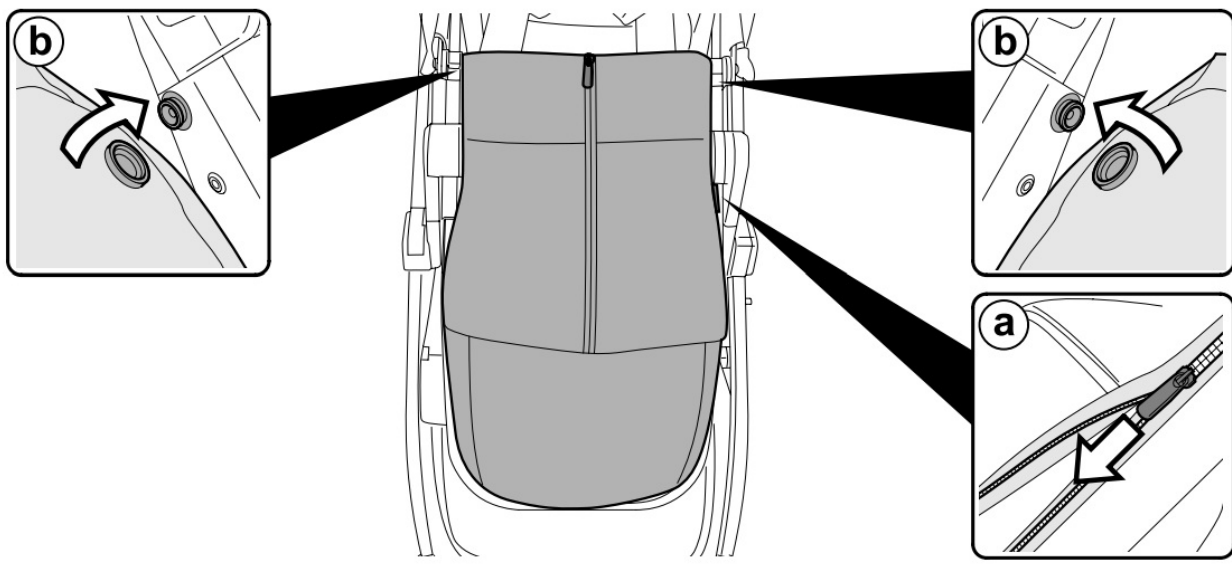


10. **BED POSITION:** the seat can be adjusted in three positions, from “sitting” to “lying”, with an intermediate position (fig_a). To switch from one position to another, pull the lever shown in the picture (fig_b).



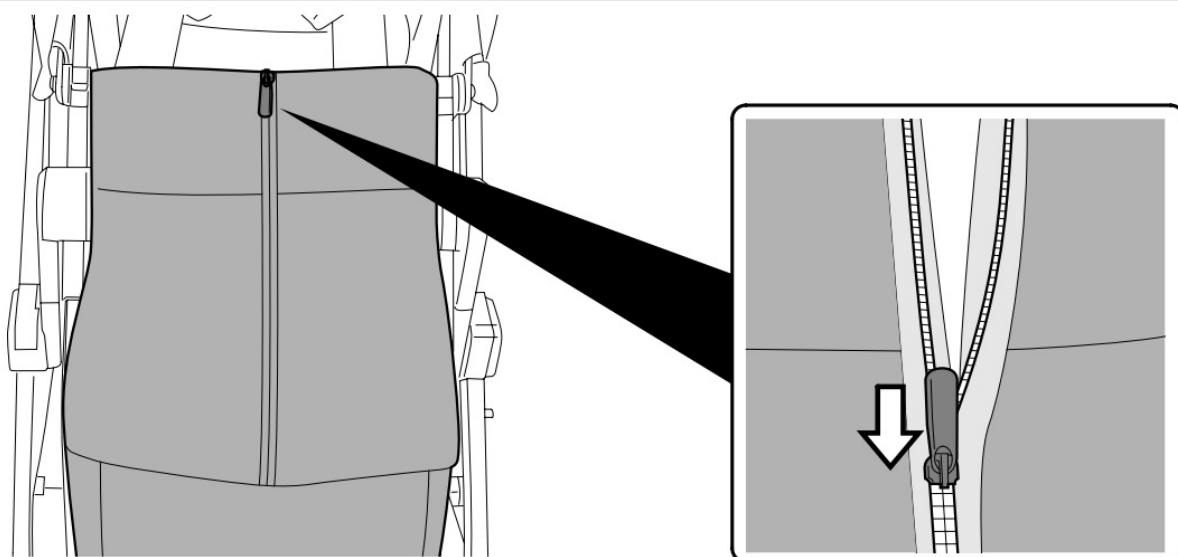
11. **FOOT MUFF:** to fasten the foot muff onto the Ypsi Seat, close the zip on the side (fig_a) and do up the buttons on the side of the corresponding uprights (fig_b).

11



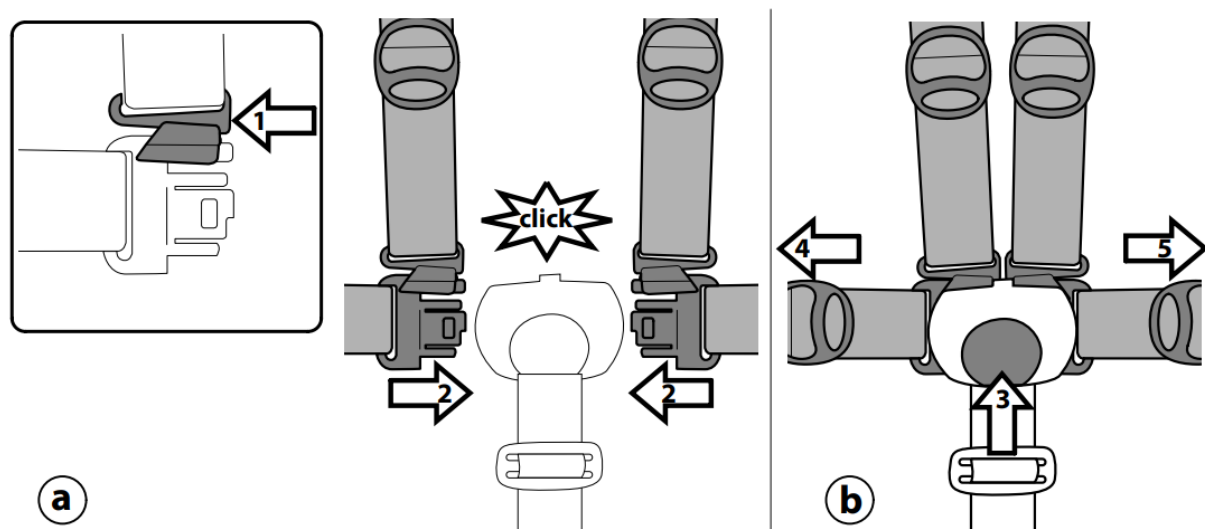
12. The foot muff can be opened at the front using the zip for that purpose, as shown in the picture.

12

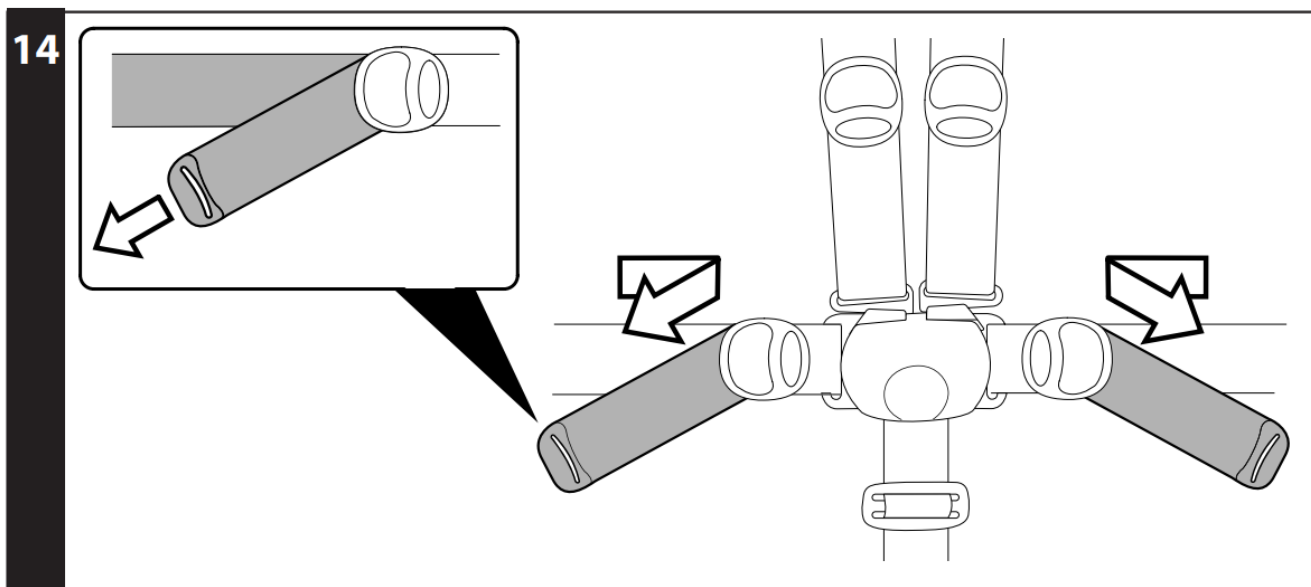


13. **5-POINT SAFETY HARNESS:** to fasten, insert the two buckles into the waist strap (with the straps attached in the crotch strap) until you hear a click (fig_a). To unfasten them, press the button which is situated at the centre of the seatbelt buckle and pull the waist strap outwards (fig_b)

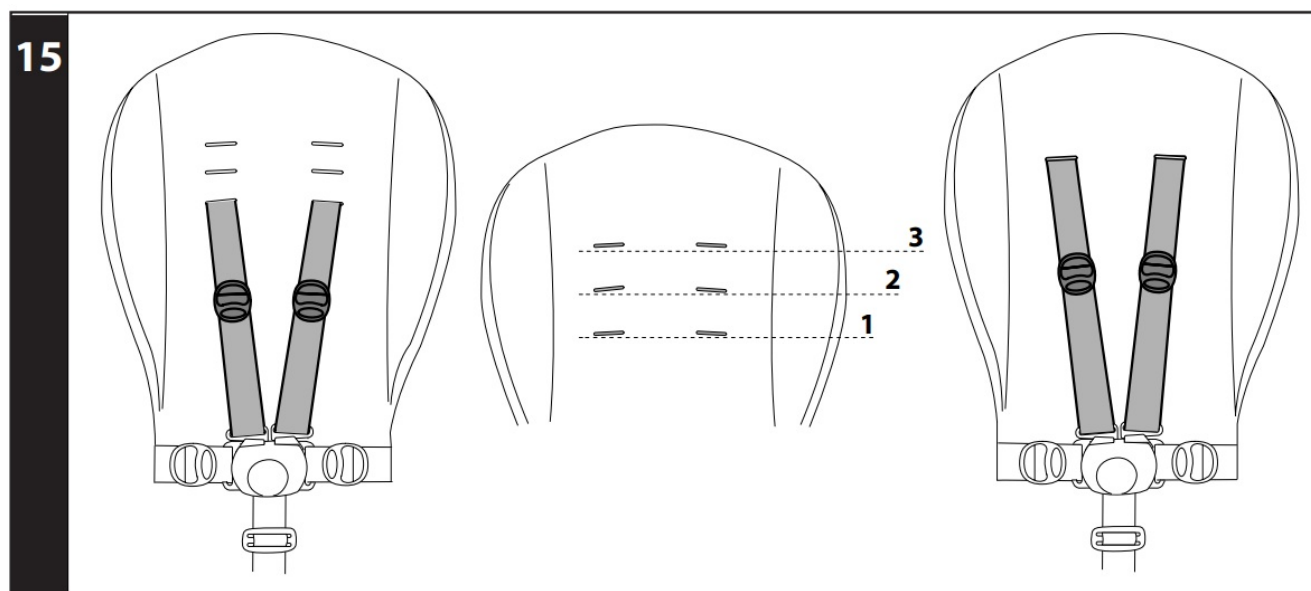
13



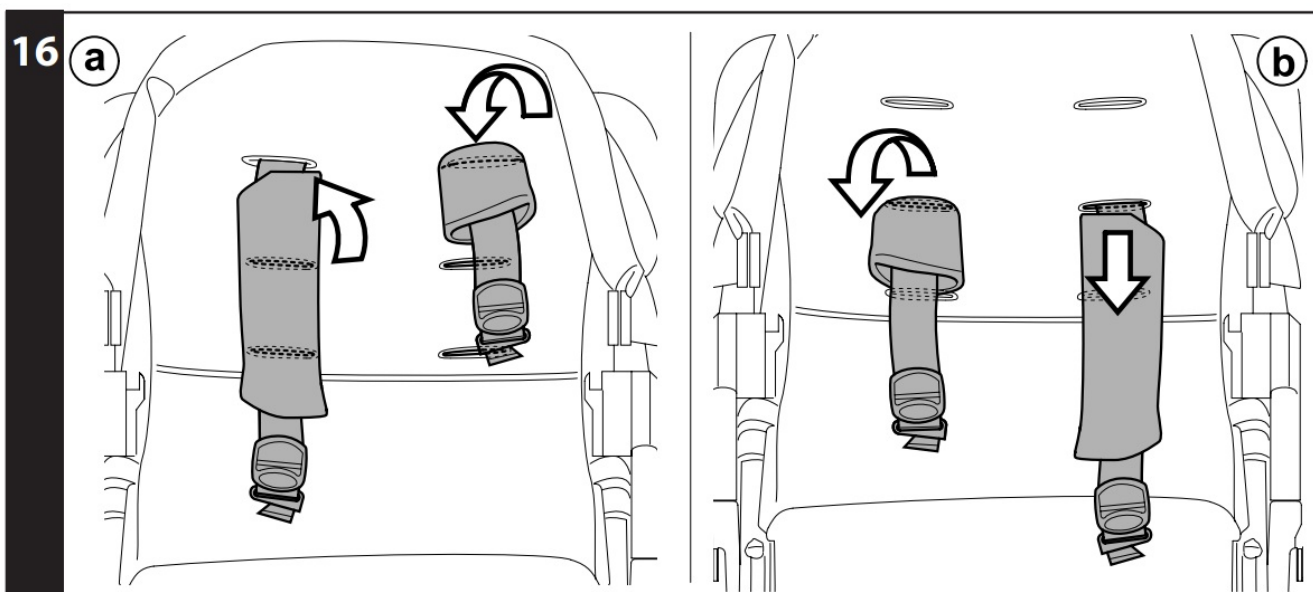
14. To tighten the waist strap, pull on both sides in the direction of the arrow; to loosen it, do the opposite.



15. The safety harness can be adjusted in 3 positions according to the child's height. You must use the higher positions as the child grows bigger



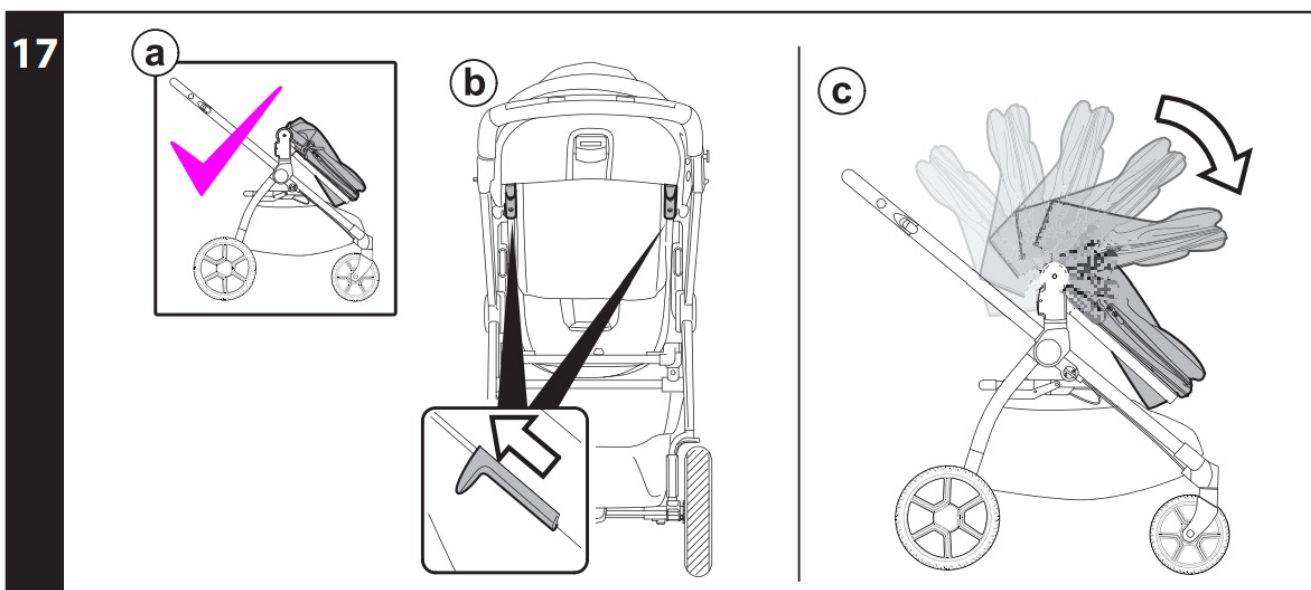
16. Adjust the height, inserting the straps with shoulder pads through the eyelet in the backrest (fig_a) and pull them through the desired eyelets (fig_b).



17. FOLDING THE YPSI SEAT ATTACHED ONTO THE CHASSIS: the Ypsi Seat can be folded attached on the chassis only in world-facing position (fig_a).

To do this:

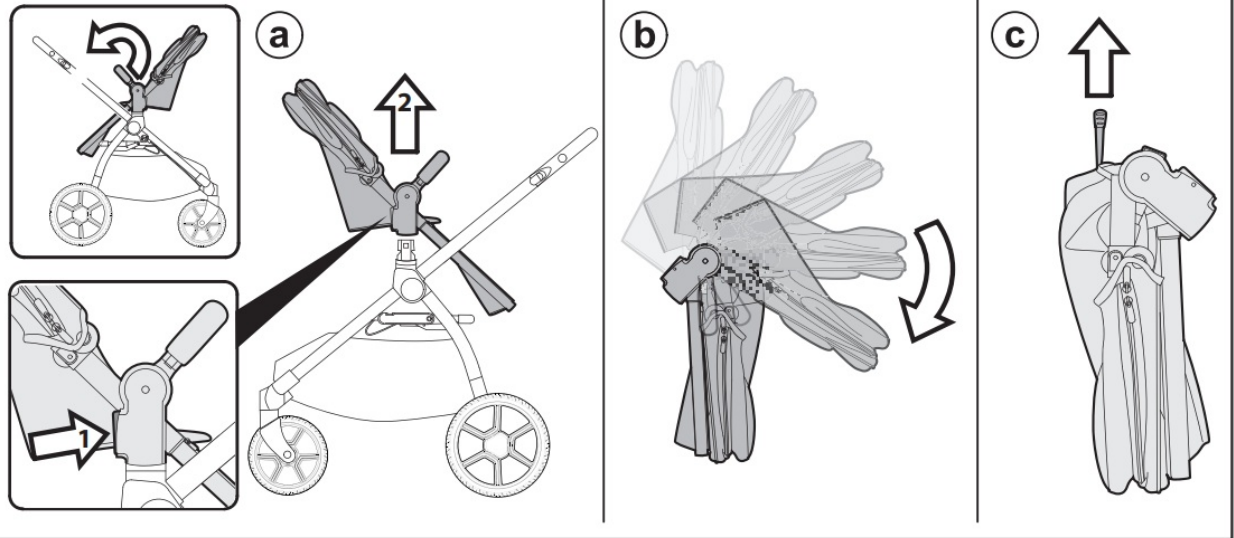
- the leg rest must be in “sitting” position,
- fold down the hood,
- pull the levers on the up-right (fig_b)
- fold Ypsi Seat onto itself (fig_c).



18. **WARNING:** If the seat is mum-facing it cannot be folded attached onto the chassis. It must be unfastened (fig_a).

It can take up less room when folded (fig_b) and can be conveniently carried using the supplied handle (fig_c).

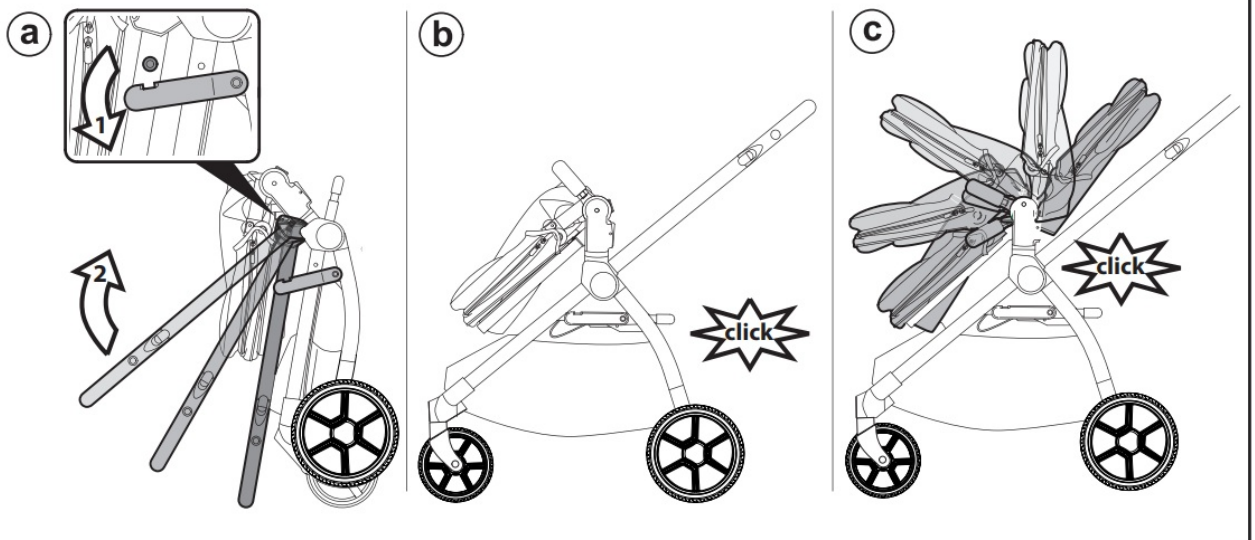
18



19. OPENING THE CHASSIS WITH YPSI SEAT ATTACHED:

Press the side attachment fastener downwards, grip the upper ends of the handle bar and rotate them towards you until the chassis opens completely (fig_a). Ypsi chassis open (fig_b). A “click” sound means it has opened correctly and corresponds to the attachment onto the base. Next, open the Ypsi Seat from the ends, pulling it until it clicks (fig_c).

19

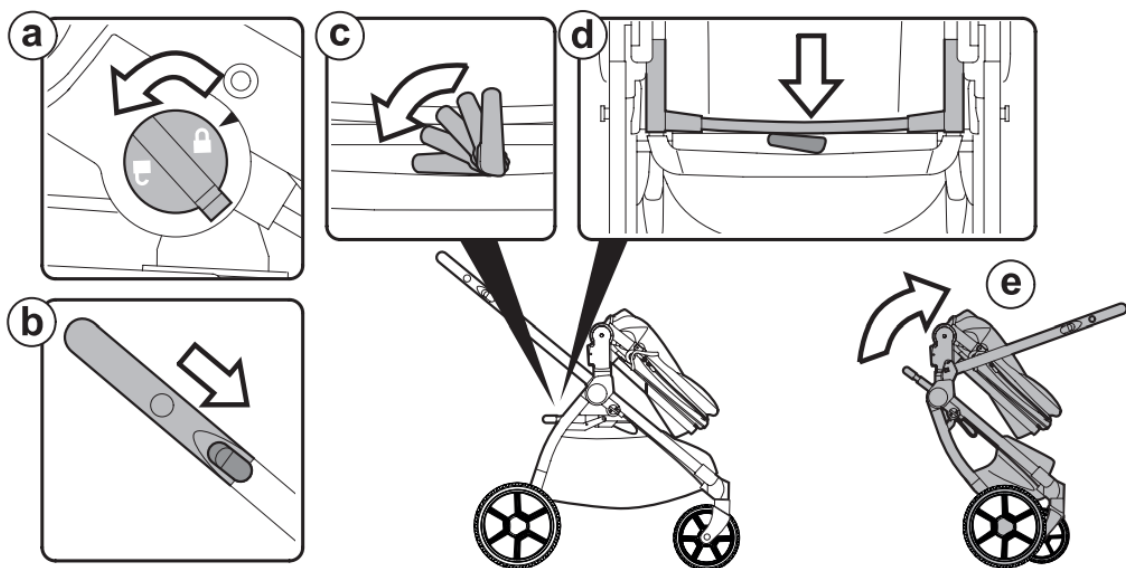


20. FOLDING THE CHASSIS WITH YPSI SEAT ATTACHED:

put the front wheels in locked position (fig_a), lower the handle bar to the lowest position (fig_b). Rotate the safety lever to the left (fig_c) and, at the same time, pull the frame's internal handle bar towards you (fig_d). Lift the handle bar until the frame is completely folded (fig_e).

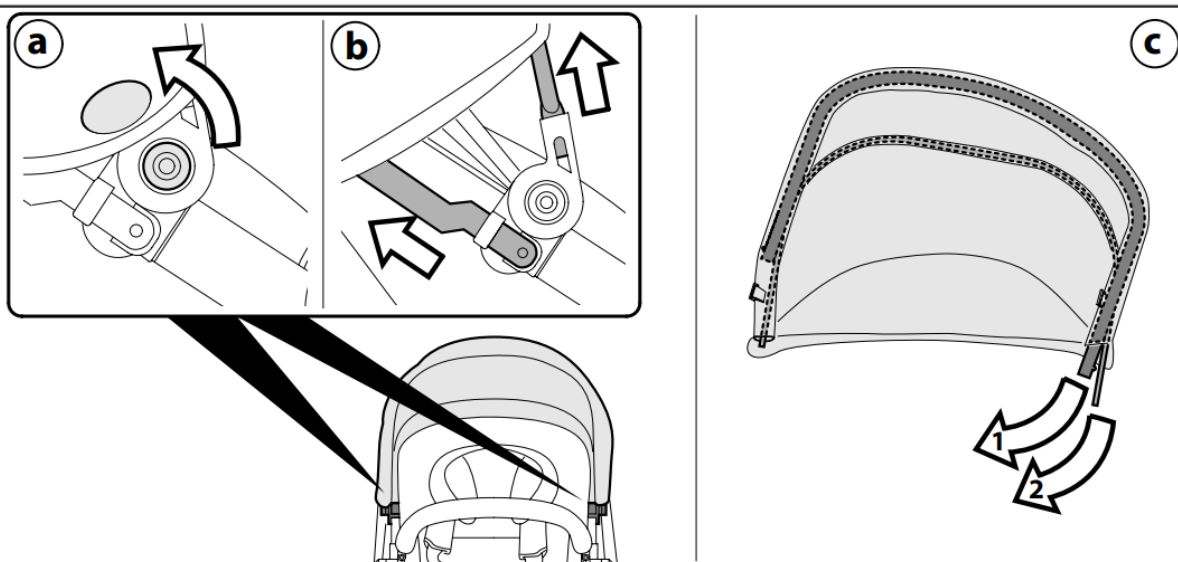
To fold correctly, check the side fastener is engaged. If it has not engaged automatically, compress the frame slightly. The folded stroller is free-standing .

20



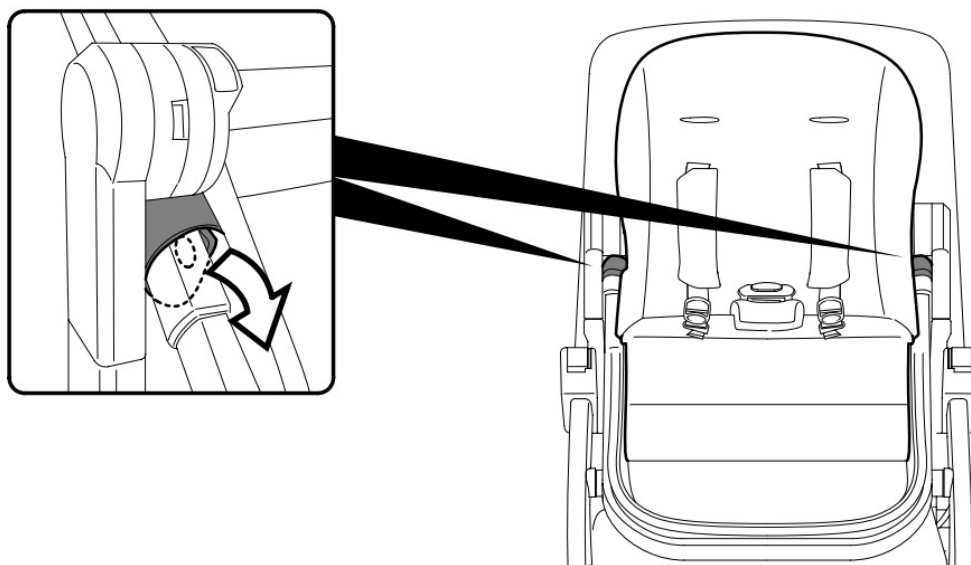
21. **REMOVING THE SOFT COVER:** to remove the hood cover, unfasten the 2 buttons near the pivots (fig_a), then press the buttons on the two attachments and remove the hood (fig_b). Lastly, extract the two rigid supports (fig_c).

21

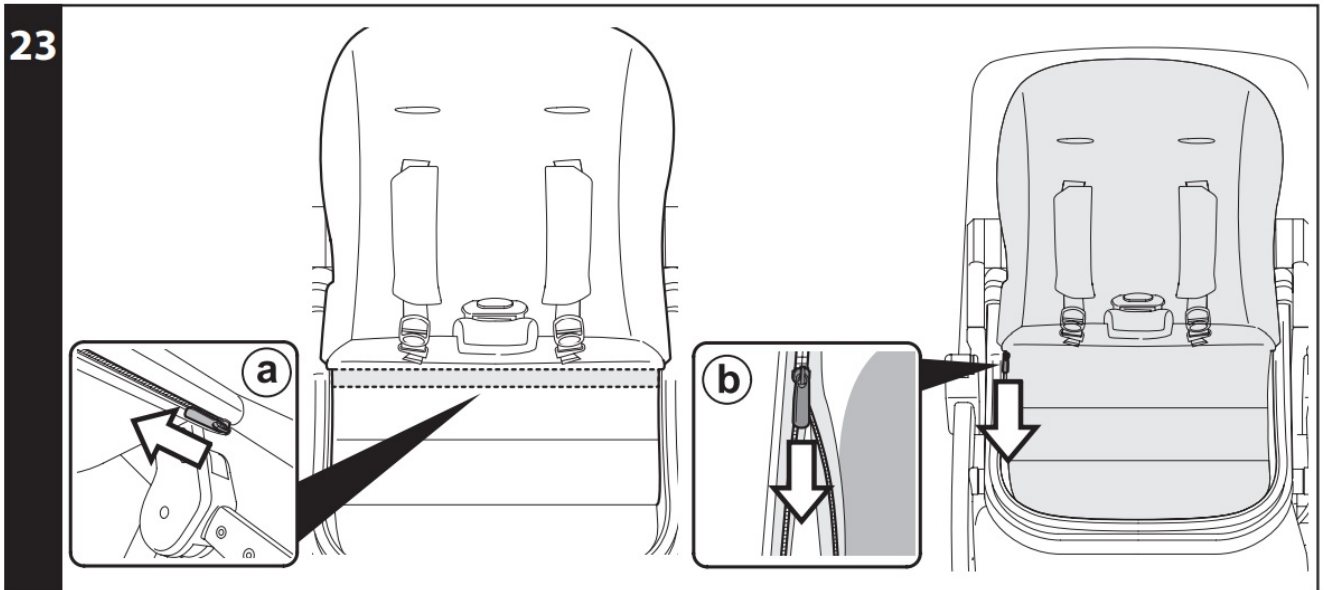


22. To remove the soft cover from the seat, undo the straps on the side of frame.

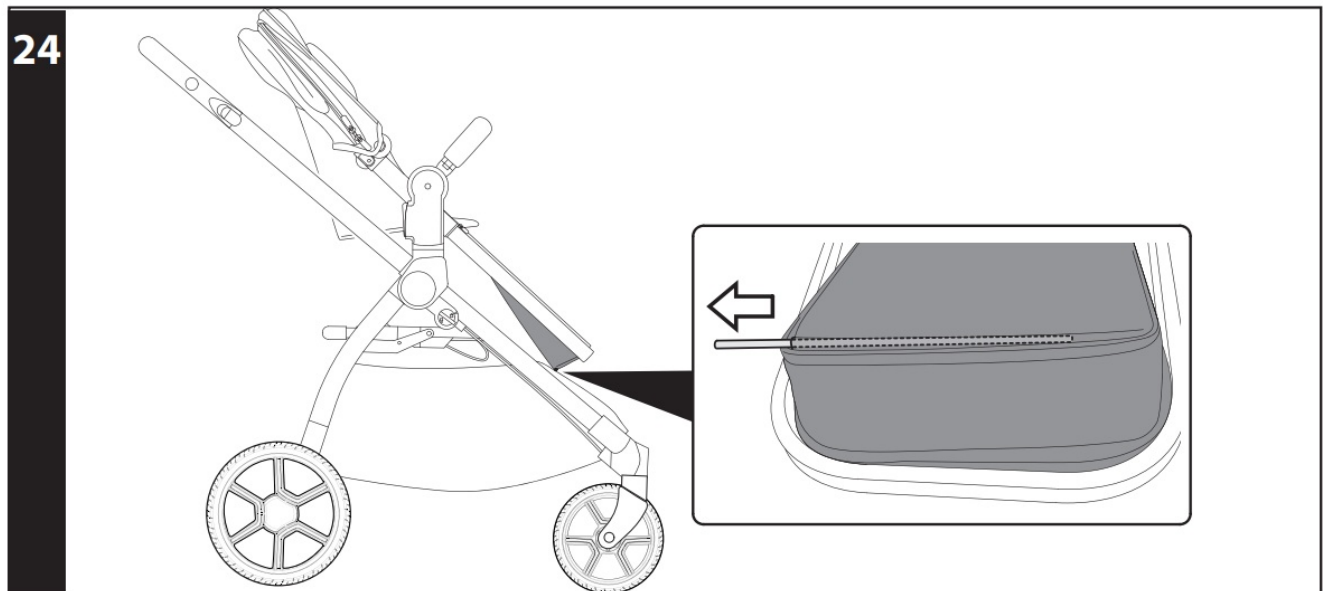
22



23. Open the zip that attaches the sack to the horizontal bar (fig_a) and open the zip along the frame (fig_b), then remove the sack.



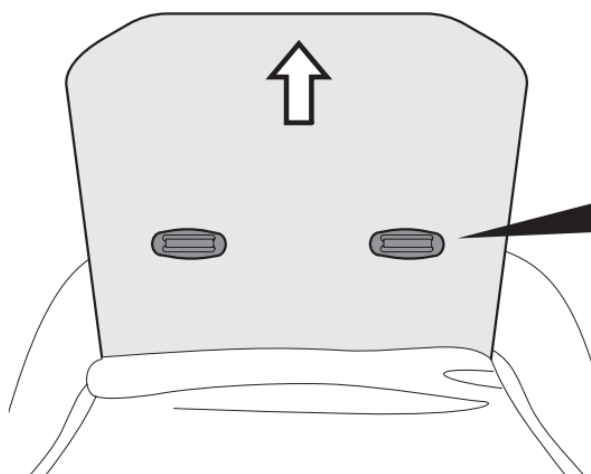
24. Remove the metal rod from the back of the leg rest.



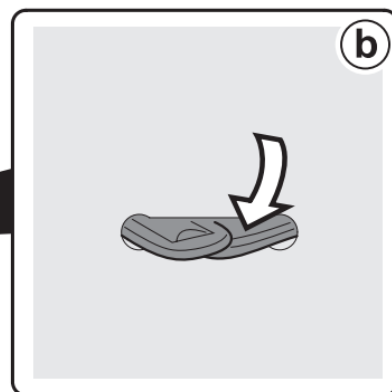
25. To remove the sack, remove the rigid panel from the back until you can see the eyelets through which the belt ends pass (fig_a); insert those ends in the eyelets so that the belts can be separated from the plate and the sack removed (fig_b).

25

a



b

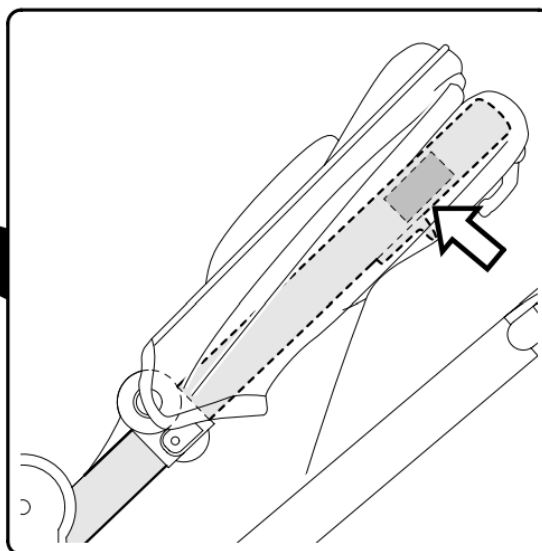
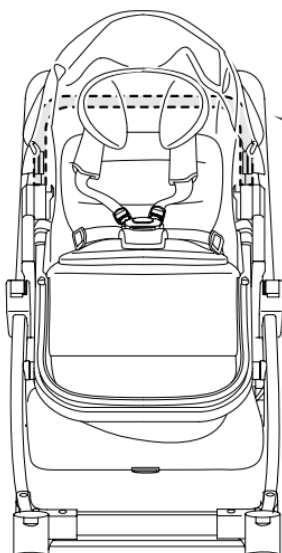


SERIAL NUMBERS

26. Information about the production date can be found on the Ypsi Seat.

_ The product name, production date and serial number of the chassis. This information is required for any complaints.

26



THE ORIGINAL ACCESSORY PEGPEREGO

PegPerego accessories are designed as a useful, practical means of simplifying the lives of parents. Discover all your product's accessories on www.pegperego.com

CLEANING AND MAINTENANCE

Cleaning must only be carried out by adults.

PRODUCT MAINTENANCE: protect from the weather: water, rain, or snow; prolonged and continuous exposure to bright sunlight may give rise to colour changes of various different materials; store this product in a dry place.

CLEANING THE CHASSIS:

periodically clean all plastic parts with a damp cloth. Do not use solvent or similar cleaning products; keep all

metal parts dry to prevent rusting; keep moving parts clean (adjustment mechanisms, locking mechanisms, wheels, ...) and free of dust and sand and, if necessary, lubricate with light machine oil.

PEGPEREGO S.p.A.

PegPerego SpA adopts a quality management system certified by TÜV Italia Srl in accordance with the ISO 9001 standard. PegPerego can make changes at any time to the models described in this publication for technical or commercial reasons.

PEGPEREGO AFTER-SALES SERVICE

If any parts of the item get lost or damaged, only use genuine PegPerego spare parts. For any repairs, replacements, information on the products and sales of genuine spare parts and accessories, contact the PegPerego Assistance Service and state the serial number of the product, if present

Tel. 0039/039/60.88.213


E-mail assistenza@pegperego.com

Website www.pegperego.com

All intellectual property rights on the contents of this manual are property of PegPerego S.p.A. and are protected by the laws in force.



Documents / Resources

 ypsi	pegperego YPSI Multifunctional Single Stroller [pdf] Instructions YPSI, Multifunctional Single Stroller, Single Stroller, Multifunctional Stroller, Stroller, YPSI
---	---

References

- [Peg Perego: baby products, accessories and ride-on toys.](#)
- [Dystrybutor fotelików, wózków dla dzieci oraz sprzętu dla dzieci](#)
- [Peg Perego: baby products, accessories and ride-on toys.](#)
- [ΑΡΧΙΚΗ ΣΕΛΙΔΑ - PERAMAX SA](#)