

PeakTech Windows 10 Driver Software Installation Guide

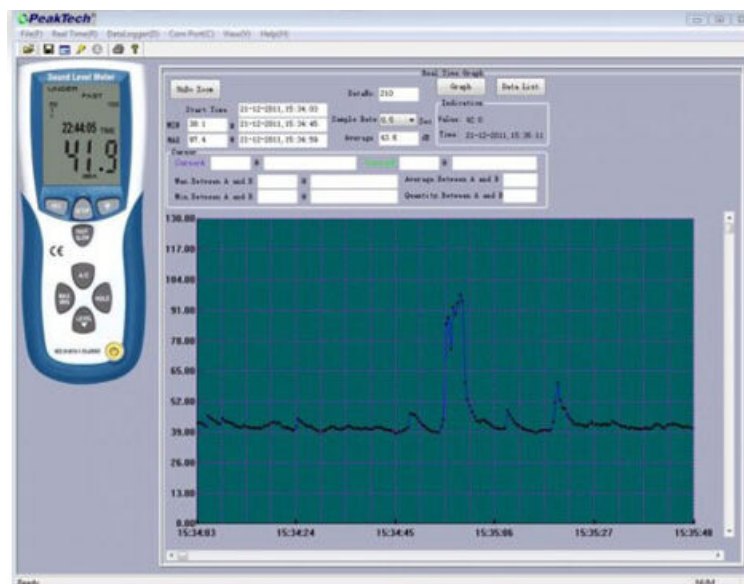
[Home](#) » [PeakTech](#) » PeakTech Windows 10 Driver Software Installation Guide 

Contents

- [1 PeakTech Windows 10 Driver Software](#)
- [2 Check](#)
- [3 Automatic Driver installation](#)
- [4 Manual Driver installation](#)
- [5 Appendix](#)
- [6 Documents / Resources](#)
 - [6.1 References](#)
- [7 Related Posts](#)

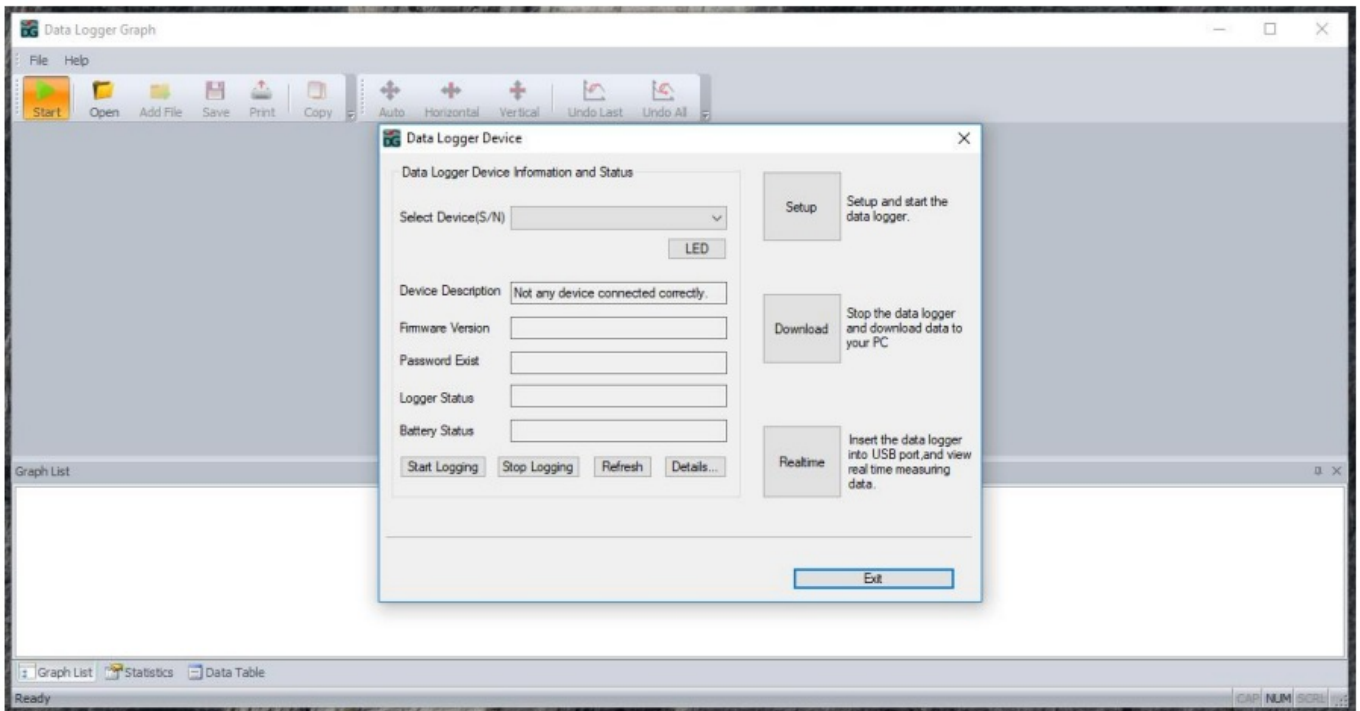
PeakTech®

PeakTech Windows 10 Driver Software



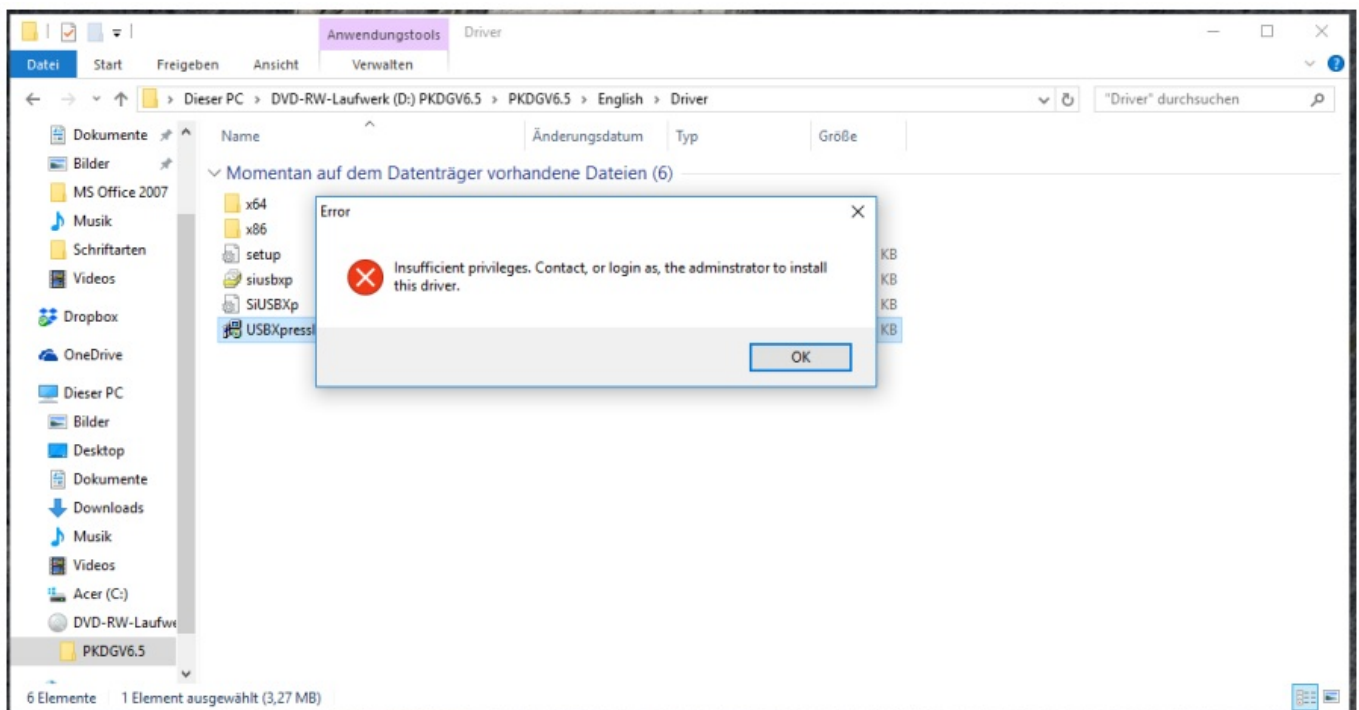
Check

Start the Software and connect the device to the USB Port – click “start”. If no device is found, the USB drivers seem to be not installed correctly



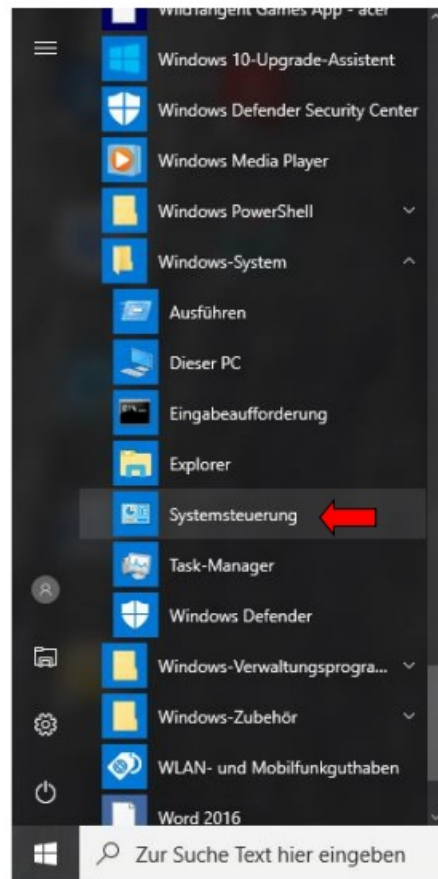
Automatic Driver installation

Open the CD folder and go to the Driver folder. Click “USBXpressInstaller.exe” – if everything works, the driver will be installed automatically. If you are using Windows 10, probably the following error will occur:



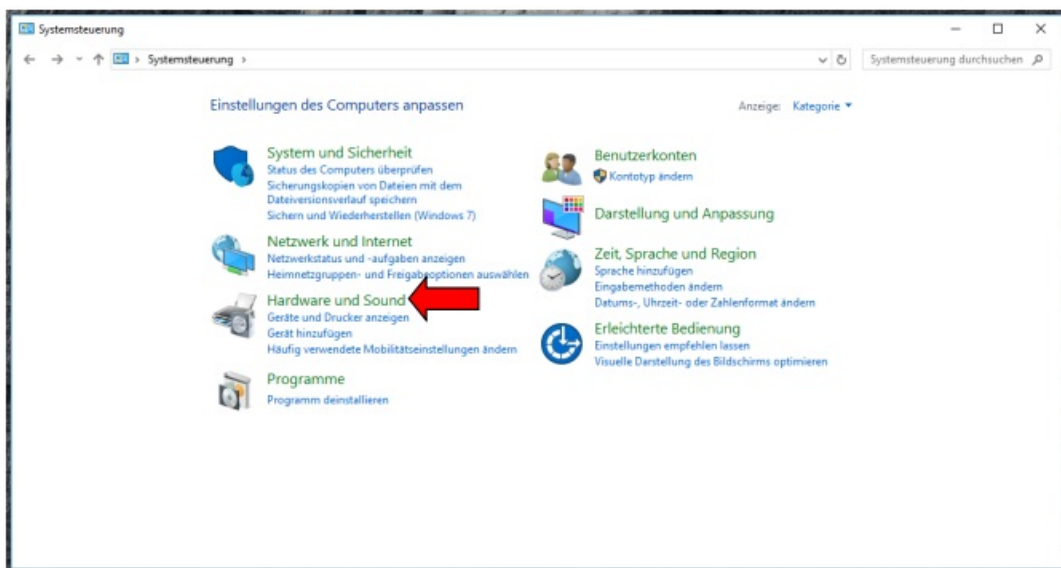
Manual Driver installation

Click you windows start-button. Go to “Windows System” and “Control Panel

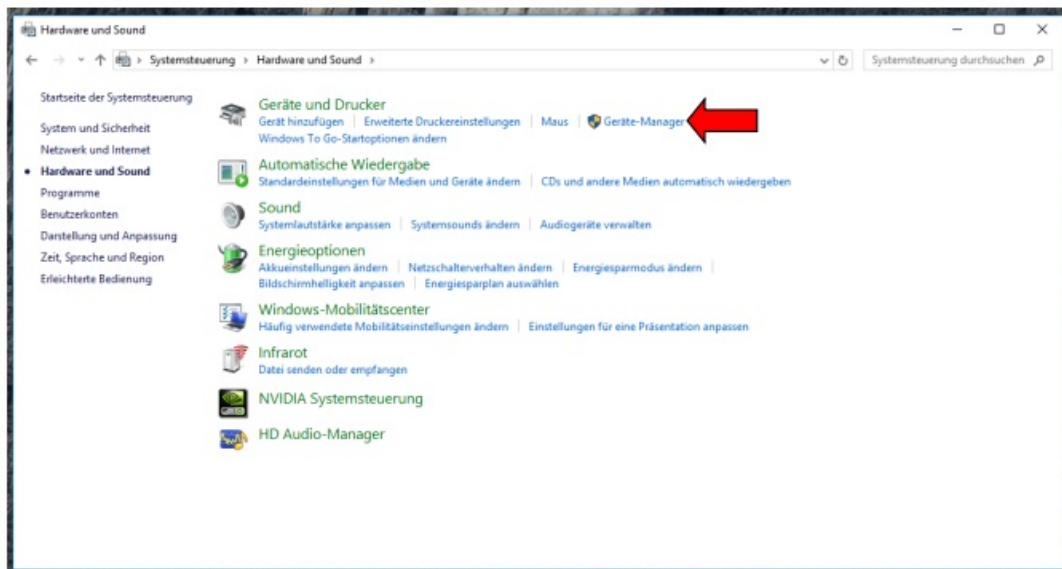


Alternative: Just enter “Device Manager” to the “search” box

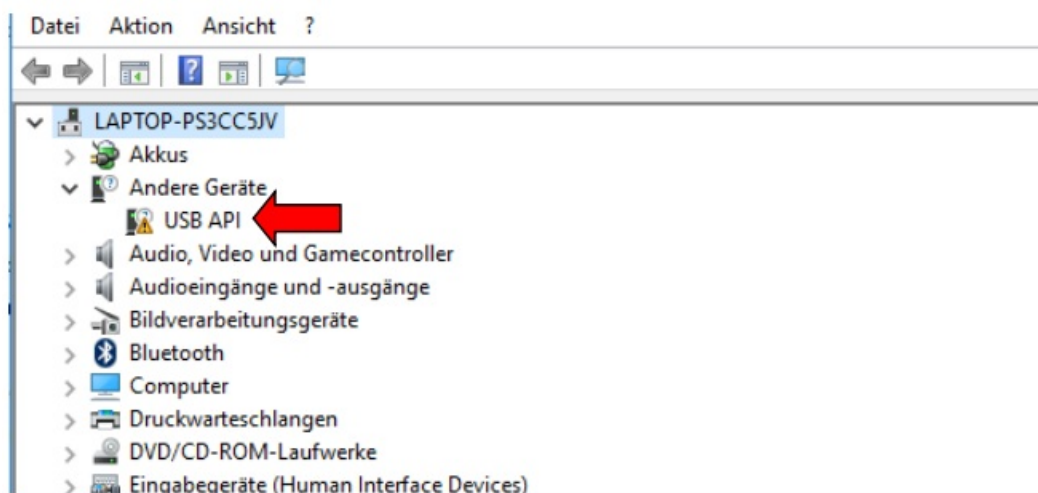
In the control panel click the green written “Hardware and Sound” headline



Now click the “Device Manager” symbol



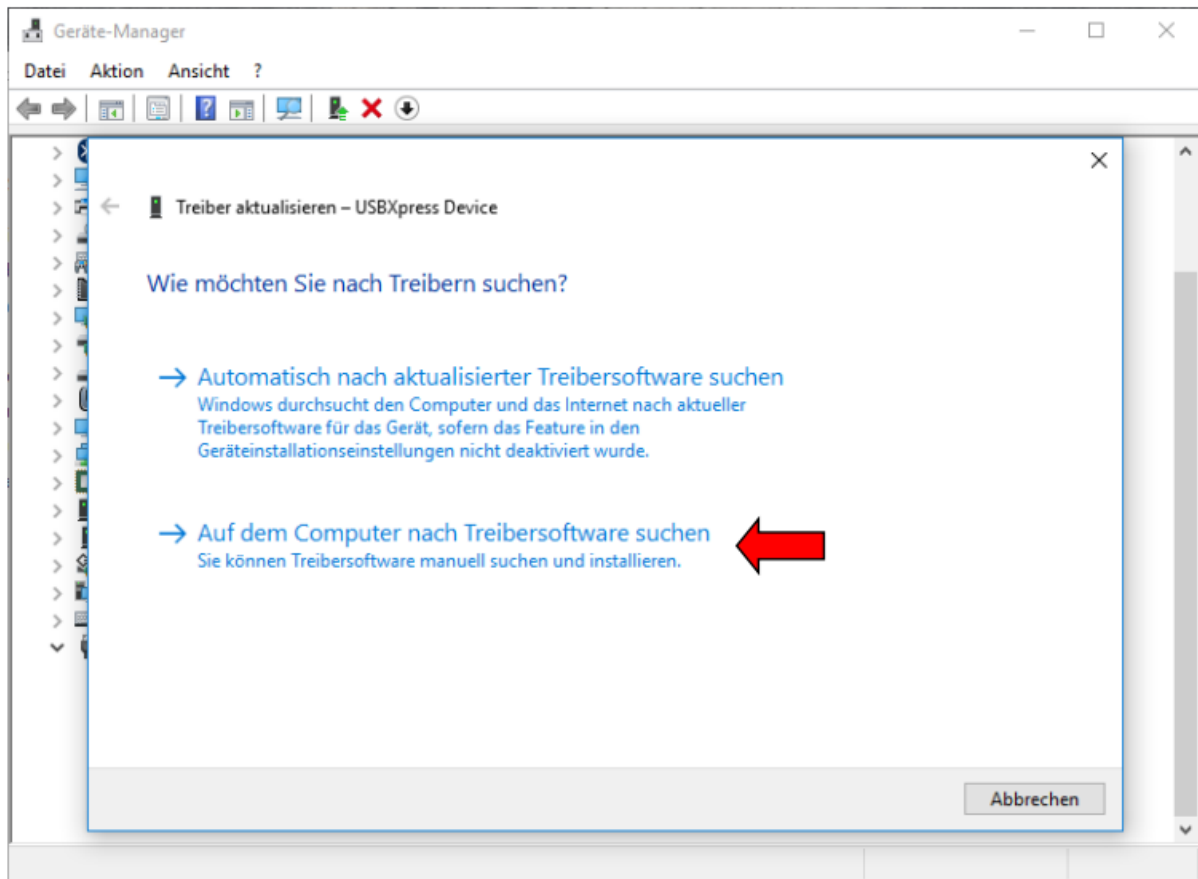
If the driver is not installed correctly, you can find the PeakTech device as “USB API” with a yellow warning sign:



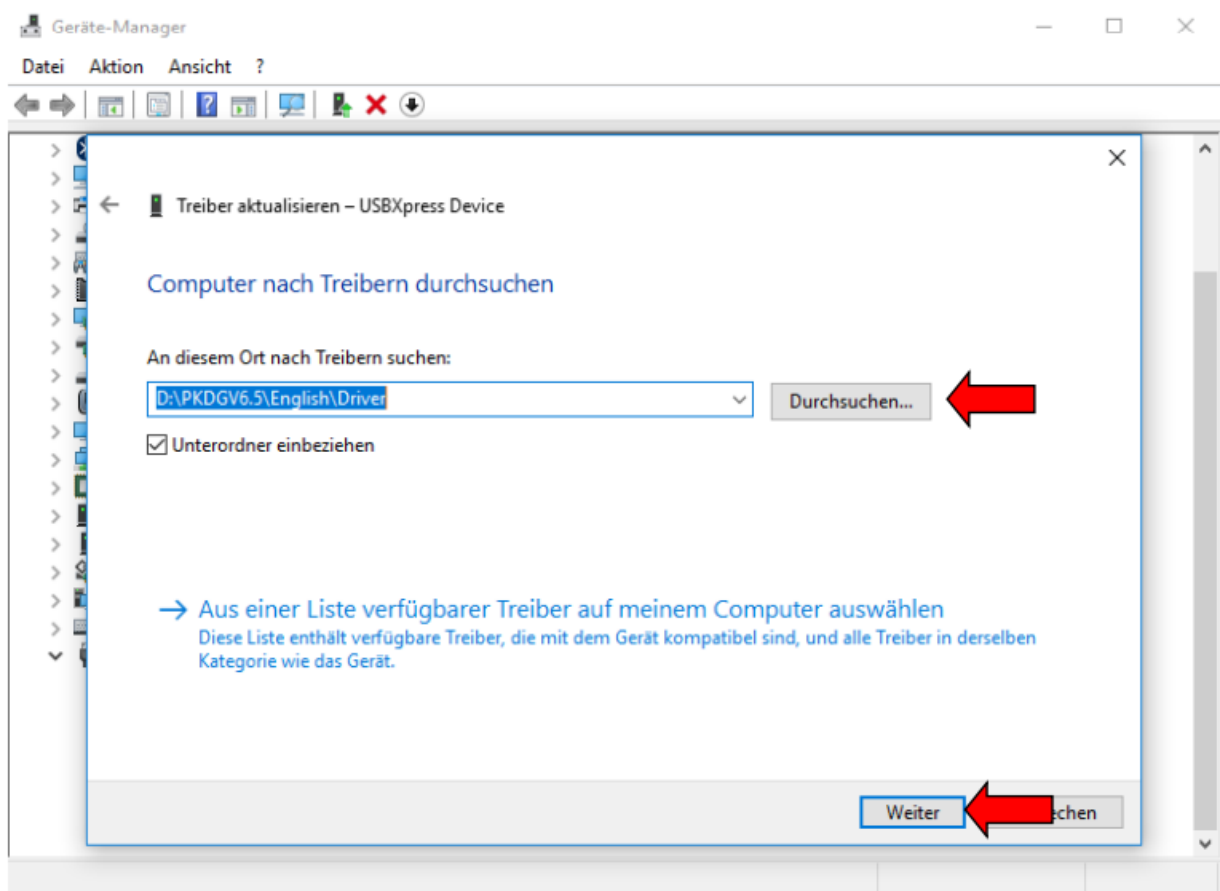
Now click the “USB API” symbol with the right mouse-key and select “Update driver”

Now Windows asks how you would like to update the driver: Automatically or manually by searching /selecting by yourself

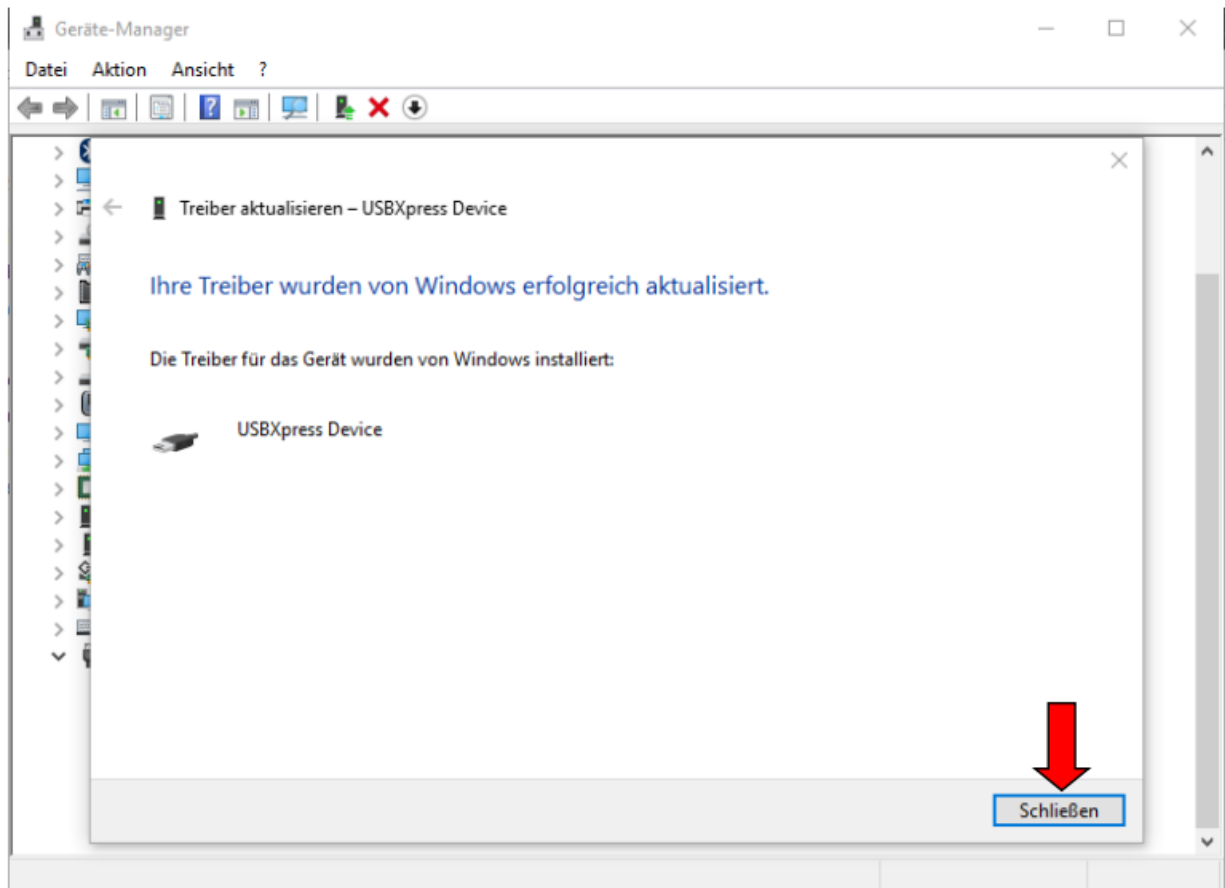
Select „Browse my computer for driver software“



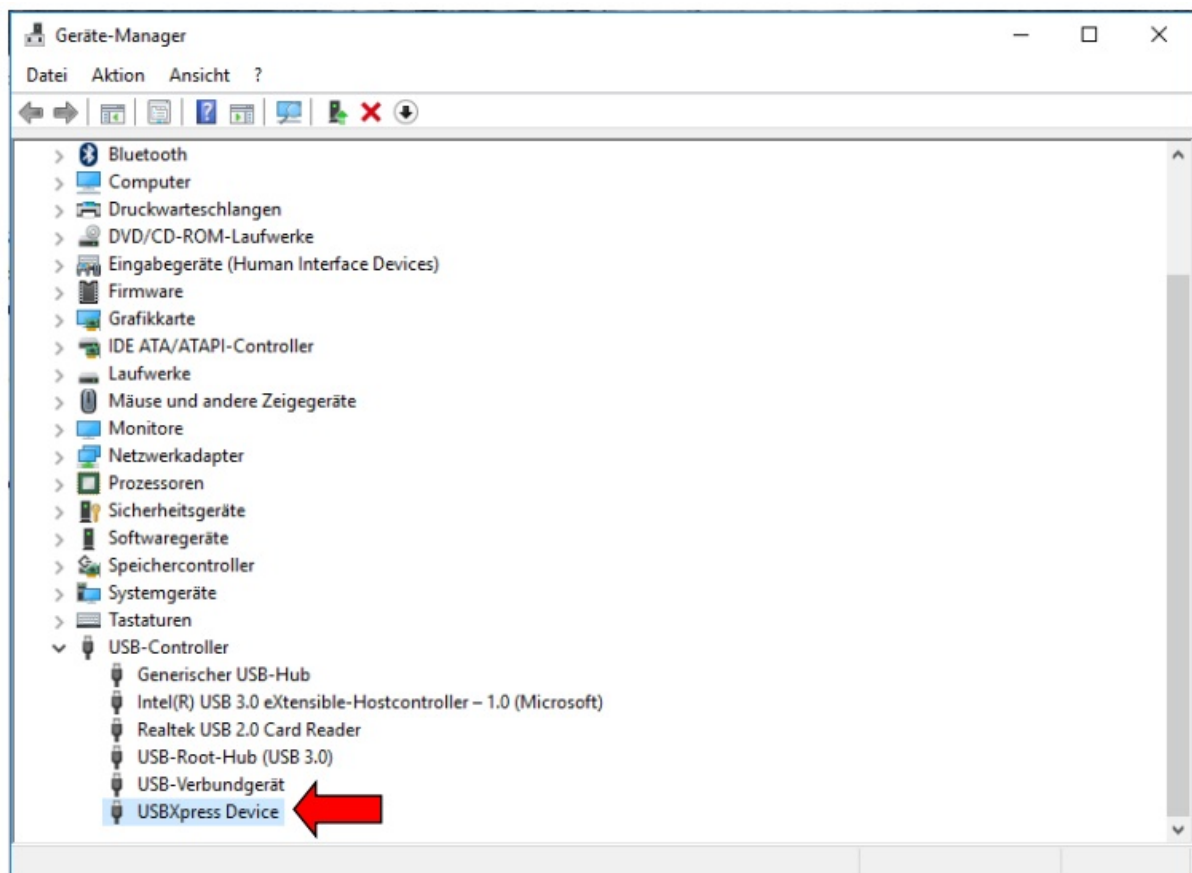
Select the CD-Rom and go to the Driver folder. Now click “next”



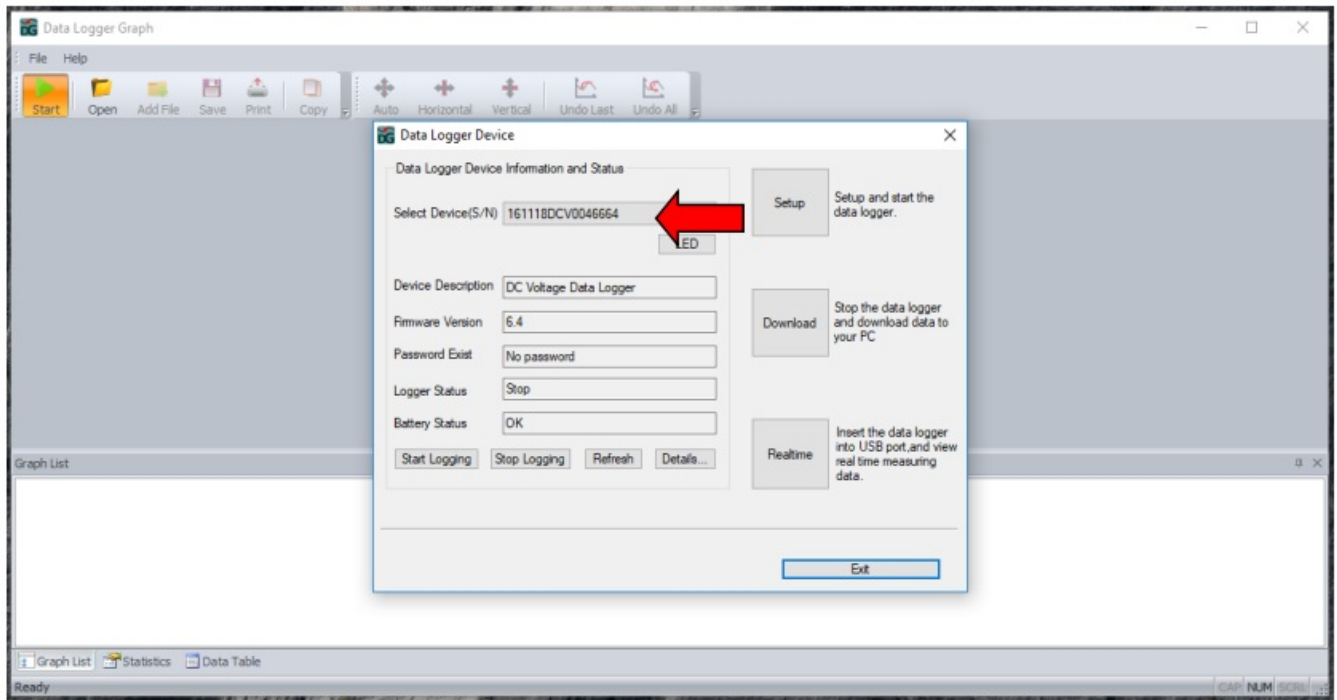
Now Windows installs the matching driver automatically. When finished, a success message will appear:



Now you can find the device with its correct driver under „USB-controller“ as „USBXpress Device“:



If you start the PC-software and click „start“, the device will be found successfully with its own serial number:



Now you can make all Settings for data logging and use the software!


Appendix

Error Message: „An Administrator has blocked the program” while driver installation, but you are the administrator

Fix:

1. Press Windows-Key+R.
2. Type msconfig in the Open box and select OK.
3. Select the Home/Start tab.
4. Check the Safe Boot check box under Boot Options.
5. Restart the PC
6. Now install the driver in safe mode
7. In Safe Mode, press Windows Key+R again.
8. Type msconfig in the Open box and select OK.
9. Select the Home/Start tab.
10. Uncheck the Safe Boot check box under Boot Options.
11. Restart the PC
12. Now the driver is installed and the PC is back in normal mode

Documents / Resources

	<p>PeakTech Windows 10 Driver Software [pdf] Installation Guide 5185, 5186, 5187, Windows 10 Driver Software, Windows 10 Driver, Software</p>
---	---

References

- [User Manual](#)

[Manuals+](#), [Privacy Policy](#)

This website is an independent publication and is neither affiliated with nor endorsed by any of the trademark owners. The "Bluetooth®" word mark and logos are registered trademarks owned by Bluetooth SIG, Inc. The "Wi-Fi®" word mark and logos are registered trademarks owned by the Wi-Fi Alliance. Any use of these marks on this website does not imply any affiliation with or endorsement.