




## PEAKnx PNx12-10001 Touch Panel Controlmini User Manual

[Home](#) » [PEAKnx](#) » PEAKnx PNx12-10001 Touch Panel Controlmini User Manual 



### PNx12-10001 Touch Panel Controlmini User Manual



**Controlmini and Gira DCS  
Getting started**

Created for use with the following product	Item number
Controlmini	PNX12-10001

## Contents

- [1 Introduction](#)
- [2 Troubleshooting](#)
- [3 Technical Support](#)
- [4 Documents / Resources](#)
  - [4.1 References](#)
- [5 Related Posts](#)

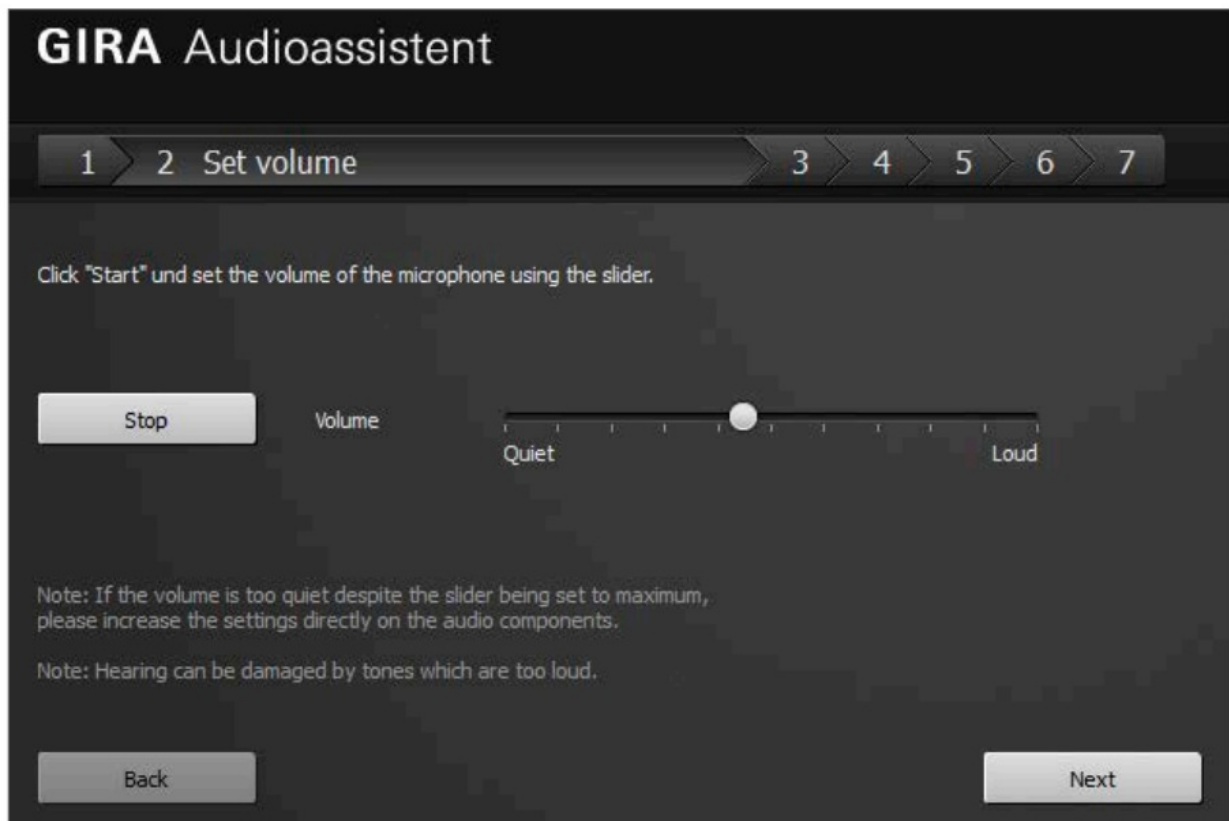
## Introduction

The following instructions explain how to set up a Gira door station with your PEAKnx touch panel. Audioassistant of the TKS Communicator

1. Select audio components
  - Select the „Microphone and Loudspeaker“ option.

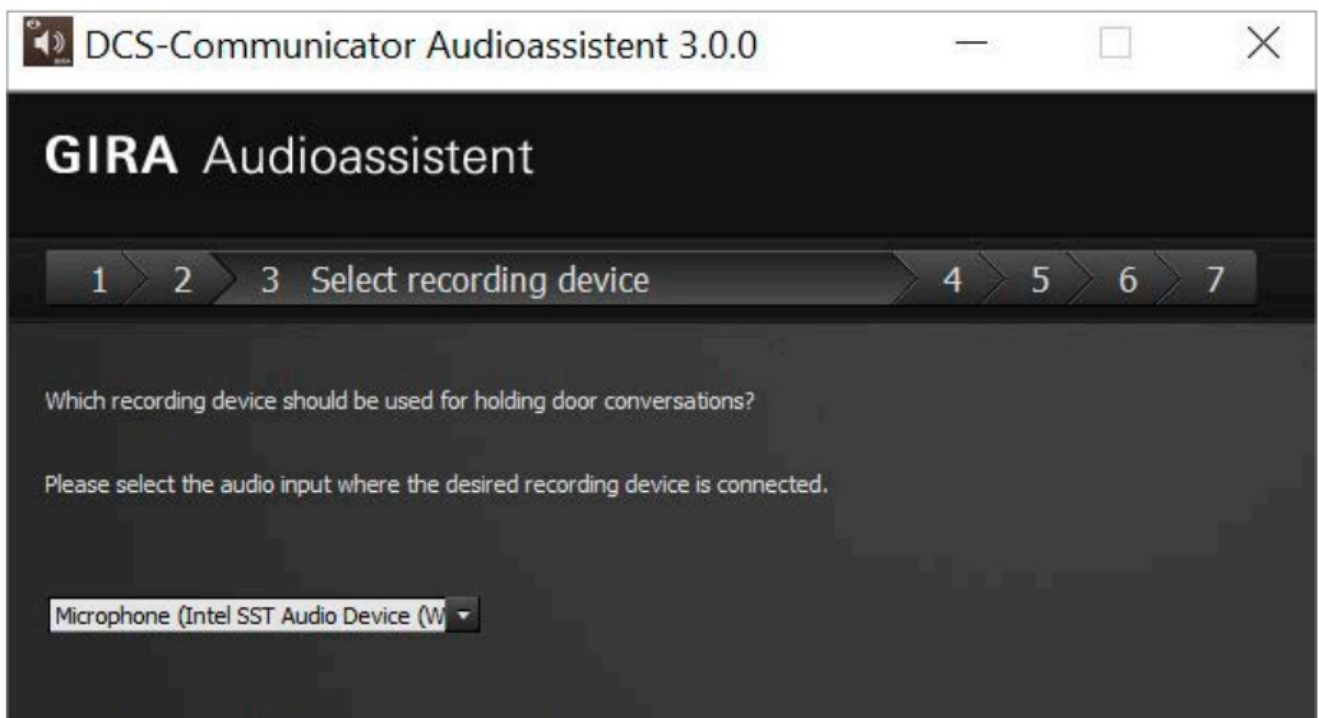


2. Adjusting the volume
  - Start the volume test and adjust the slider to your needs. By default a position in the middle is recommended.



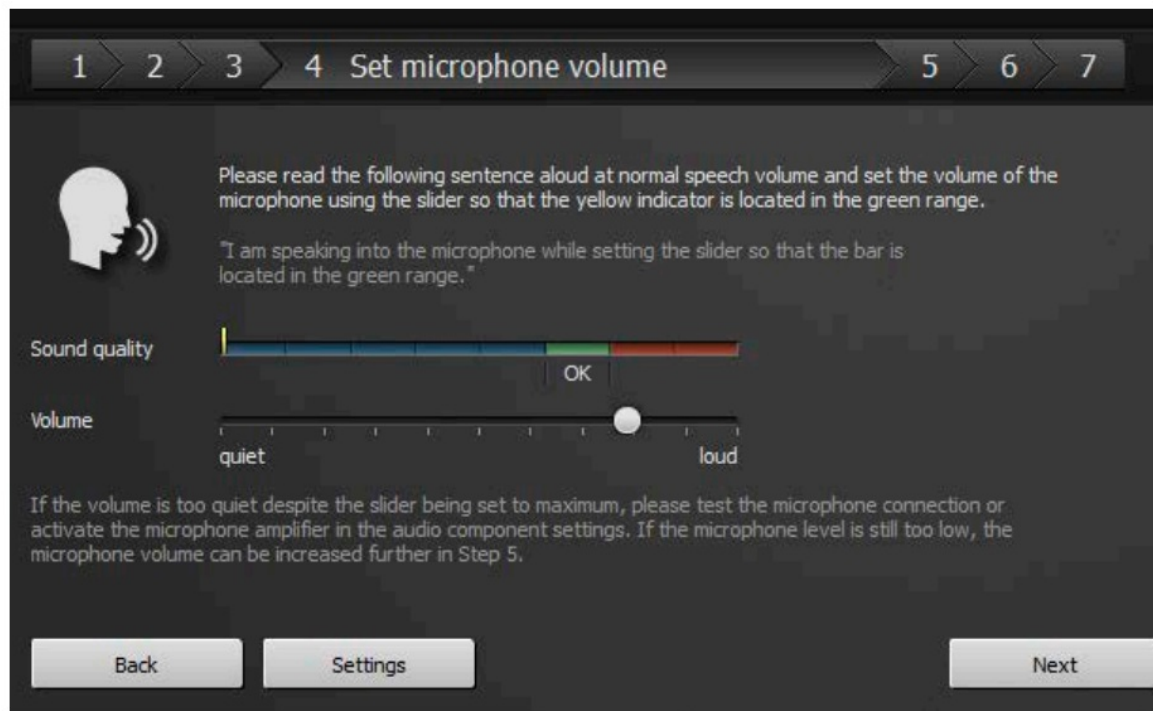
3. Select recording device

- Select the option „Microphone (Intel SST Audio Device(WDM))“ here.

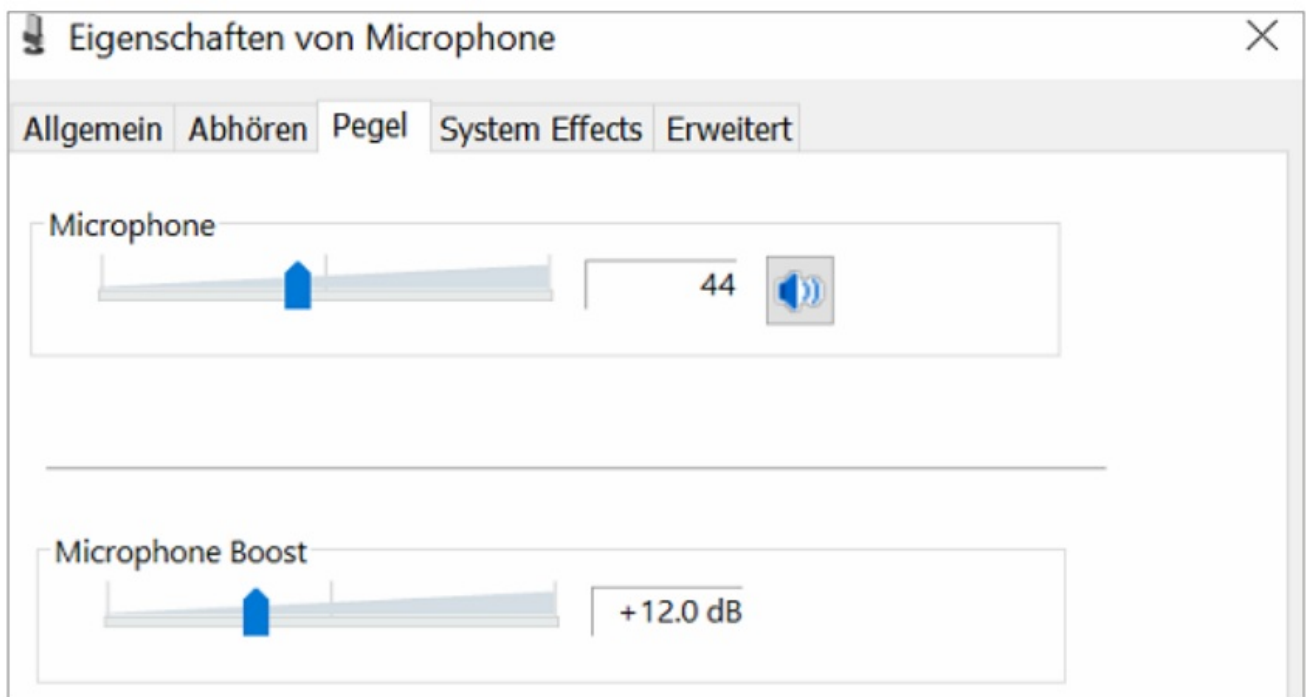


4. Adjusting the microphone volume

- Do the speech test and move the slider to the second line from the right.



- Select „Settings“ at the bottom of the window.
- In the next window double-click on the microphone with the green tick.
- Here you can now set the gain under the „Level“ tab.
- Adjust the microphone volume (Microphone) to the middle.
- Set the microphone boost to +12.0 dB.



- Accept the settings and close the window to continue with the wizard.
- Calibrate microphone volume
- Press the „Start“ button and adjust the slider to the middle.

# GIRA Audioassistant

1

2

3

4 Calibrate microphone volume

5

6

7

Click "Start" and set the volume of the microphone using the slider so that the yellow indicator is located in the ideal range.



## ■ Optimize voice quality

- Perform the voice quality test.

## 5. Optimize microphone volume

- Move the slider to the second line from the right.

# GIRA Audioassistant

1

2

3

4

5 Optimise microphone volume

6

7



Please read the following sentence aloud at normal speech volume and set the volume of the microphone using the slider so that the yellow indicator is located in the green range.

"I am speaking into the microphone while setting the slider so that the bar is located in the green range."



## 6. Test configuration

- Start the configuration test.

## 7. Finish Audio Assistant

- Close the audio assistant and have fun with your Controlmini intercom!

## Troubleshooting

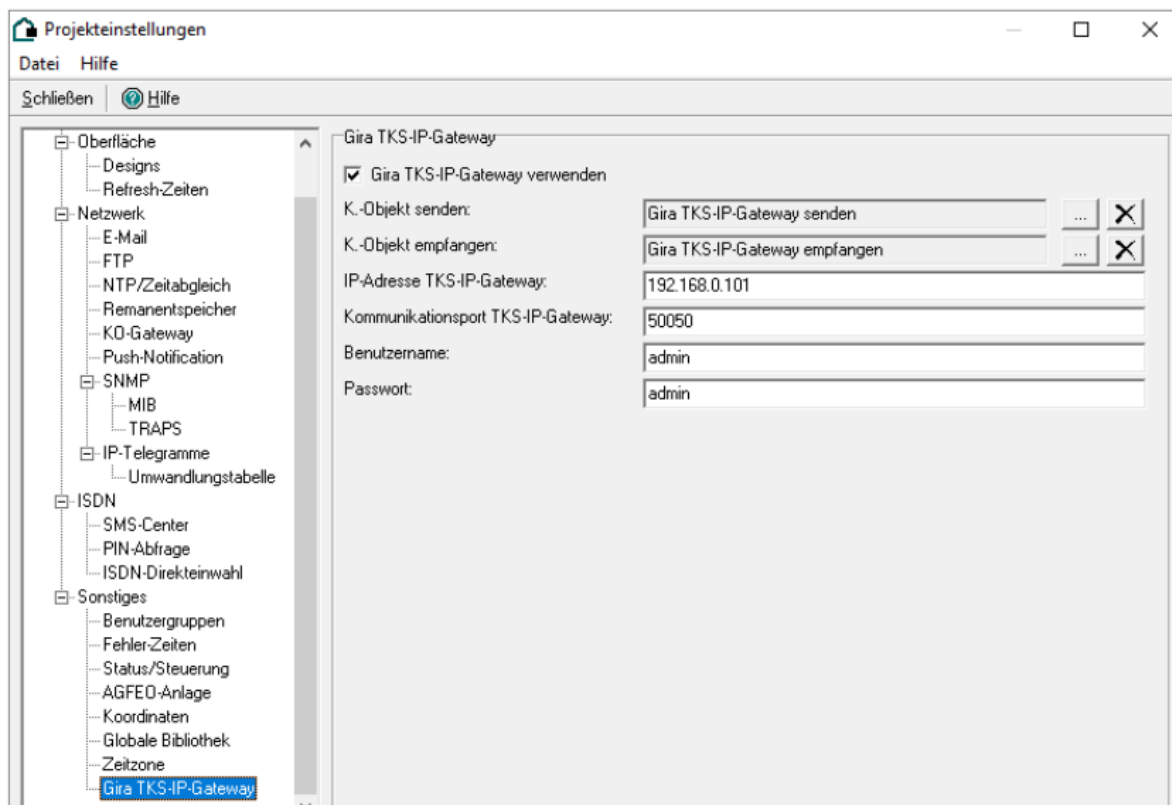
Problem	Solution
After a few seconds of good intelligibility on the door unit, the person on the PEAKnx Panel is suddenly perceived quiet and barely audible or cut off and hard to hear.	Microphone is amplified too much, see point 4 Microphone volume. Reduce microphone volume slightly or reduce microphone level slightly (slider to the left)
At the door unit, the person at the PEAKnx Panel is perceived at the correct volume but with white noise in the background.	The wizard amplifies the microphone of the PEAKnx Panel too much, see point 5 Optimize microphone volume. Reduce the microphone volume (slider to the left)
At the door unit, the person at the PEAKnx Panel is perceived too quiet.	The microphone is not amplified enough, see point 4 Microphone volume. Increase the microphone volume (slider to the right)

### Display TKS Communicator larger

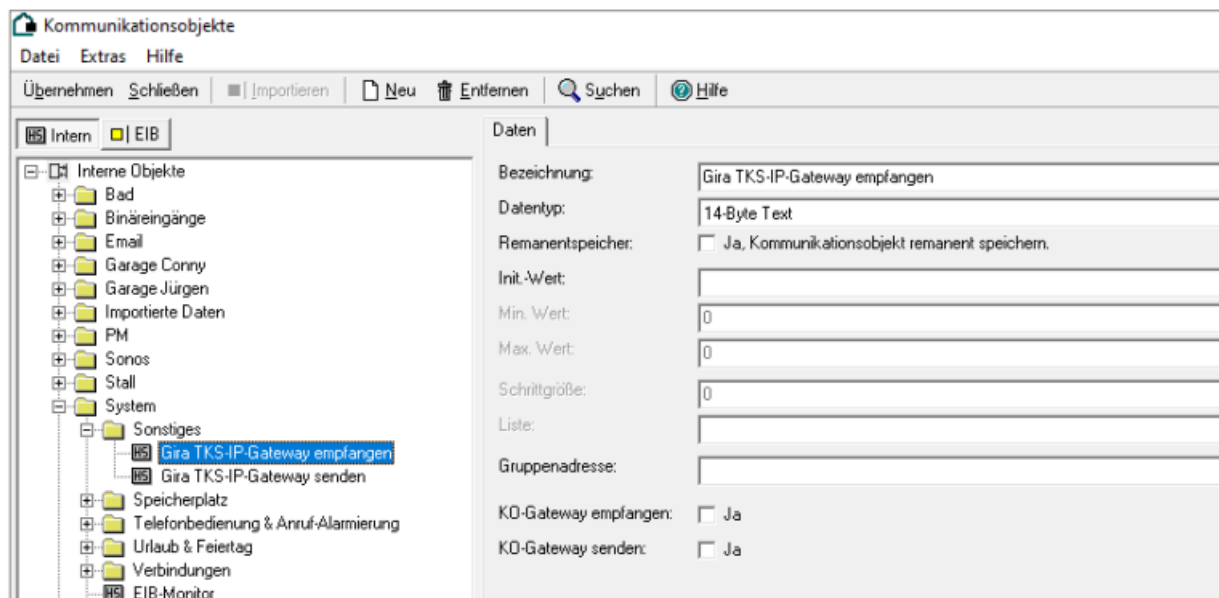
- Right-click on the TKS Communicator shortcut and select Properties.
- Switch to the Compatibility tab.
- Click on Change high DPI settings.
- Check Override high DPI scaling behavior and select “System (Advanced)” from the dropdown menu below it.
- Confirm with “Ok” in both windows.

### When the bell is pressed, switch on the screen via the Gira Home Server

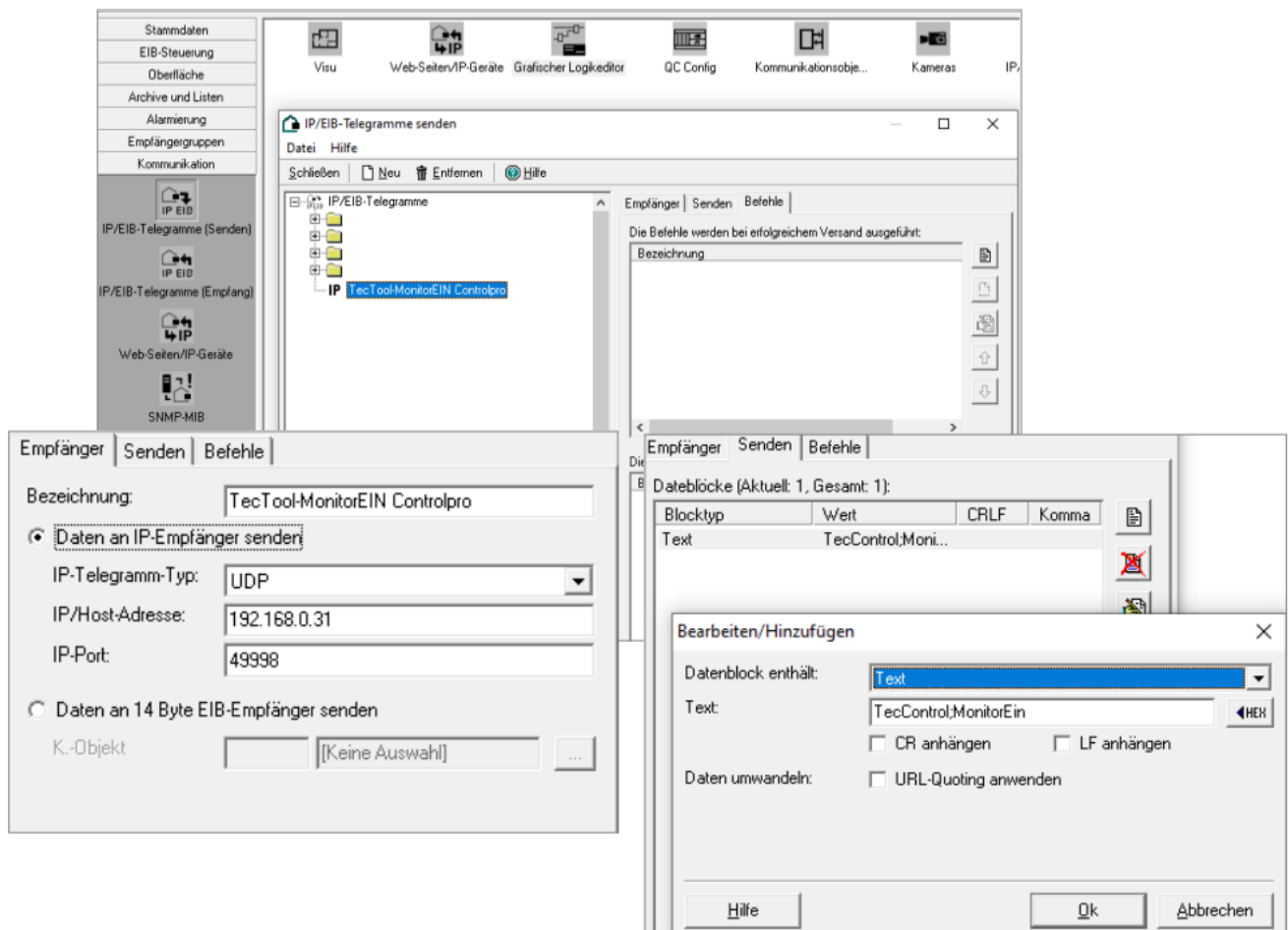
- Create TKS IP gateway:



- Create internal KOs (communication objects):



### ■ IP/EIB telegrams (send):

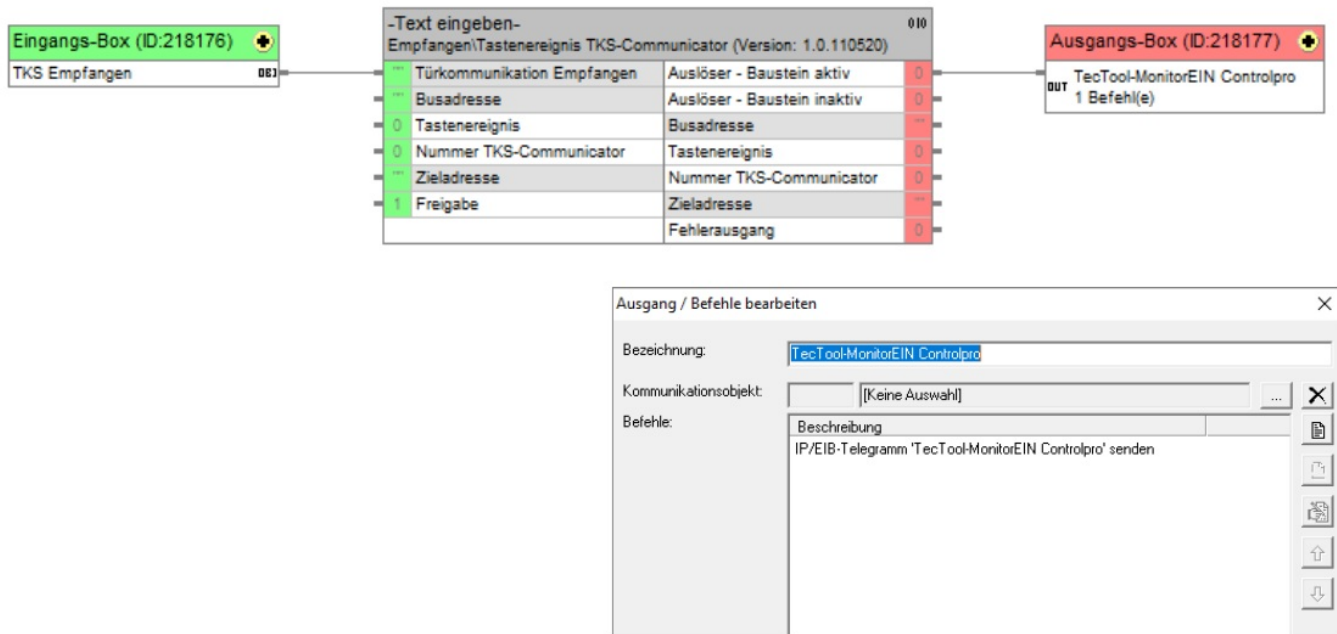


\*Receiver (Empfänger): IP/Host-Adresse: IP address of the panel

\*Send (Senden): Text (Text): TecTool command. To learn more about TecTool, click [here](#).

■ Create logic:





## Technical Support

If you experience problems with your PEAKnx Panel please contact our PEAKnx Support Team:

- Mail: [support@peaknx.com](mailto:support@peaknx.com)
- Create a Support Ticket: [support.peaknx.com/?lang=en\\_US](https://support.peaknx.com/?lang=en_US)
- Tel.: +49-6151-279 1825

The product names mentioned in this document may be brands or registered trademarks of their respective owners. These are not explicitly labeled with “TM” or “®”.

© PEAKnx GmbH  
 Otto-Röhm-Strasse 69  
 64293 Darmstadt  
 Germany  
[www.peaknx.com](http://www.peaknx.com)  
[info@peaknx.com](mailto:info@peaknx.com)  
 Document version: 2.1.0  
 Date: 17.05.22

## Documents / Resources

 <p>Controlmini und Gira TKS  <small>Kurzanleitung / Getting started / Notice d'usage      DE   EN   FR</small></p>	<p><b><a href="#">PEAKnx PN12-10001 Touch Panel Controlmini</a> [pdf] User Manual</b>        PN12-10001 Touch Panel Controlmini, PN12-10001, Touch Panel Controlmini, Panel Controlmini</p>
--	---

## References

- [PEAKnx: Hard- & Software für KNX Smart Homes](#)