



pdw Gravity Plus USB Tail Light User Guide

[Home](#) » [PDW](#) » [pdw Gravity Plus USB Tail Light User Guide](#) 

Contents

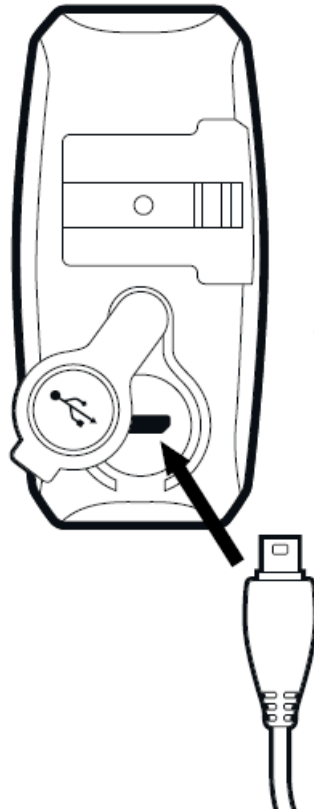
- [1 pdw Gravity Plus USB Tail Light](#)
- [2 Charging](#)
 - [2.1 Charging indicator on front of light](#)
- [3 Stayputnik™ mount](#)
- [4 Operation](#)
- [5 Warranty](#)
- [6 CONTACT](#)
- [7 Documents / Resources](#)
- [8 Related Posts](#)



pdw Gravity Plus USB Tail Light



Charging



Charging indicator on front of light

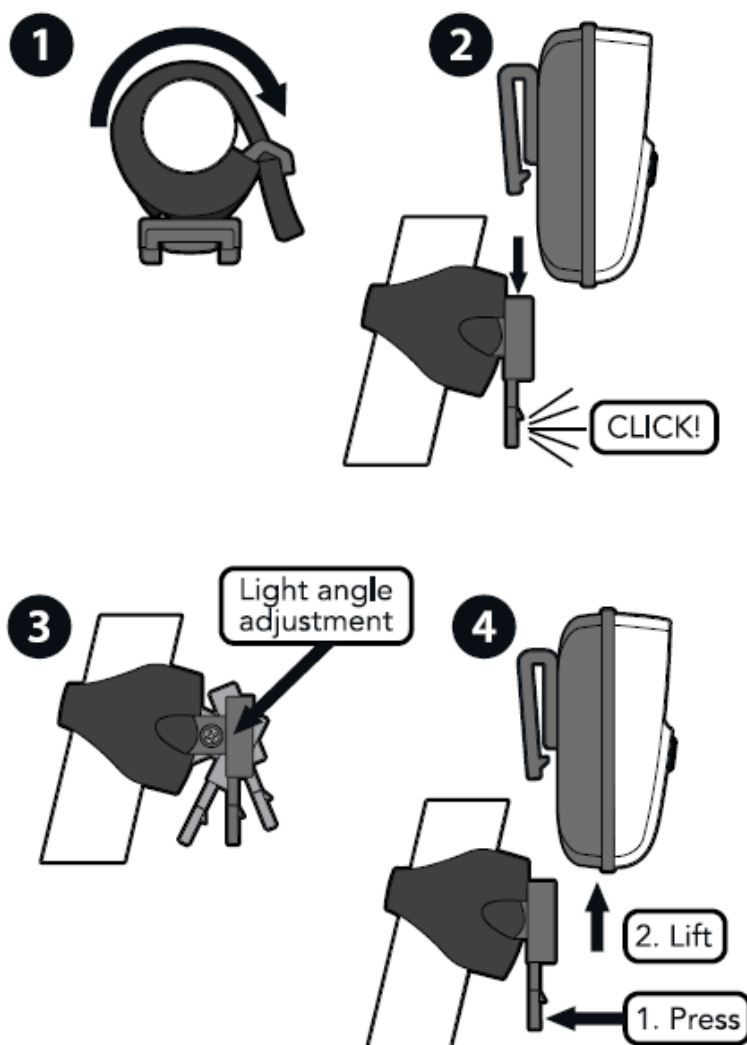
- **Blue flash:** charging
- **Solid Blue:** fully charged

Tail light will charge from empty to full in 2.5 hours.

Battery Care note

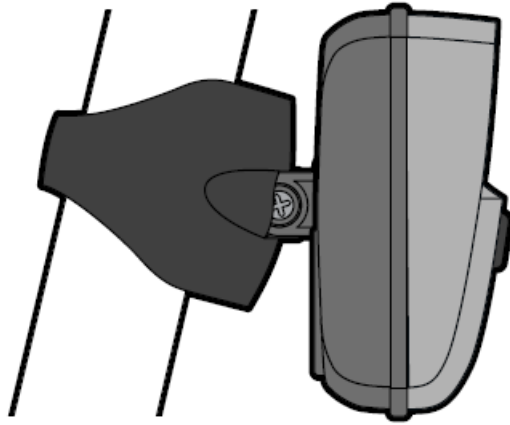
- Leaving the light plugged into a power source or charging before the light is fully depleted will not harm the battery.
- Charge the battery at least once every 2 months to maintain battery health.

Stayputnik™ mount



Operation

To allow the accelerometer to calibrate, always install the Gravity™ on your bike before powering it on. Hold your bike still for 1 second after pressing the power button to complete the calibration.



- Press and hold button for 1 second for on/off.
- Tap button to change between functions.
- When battery is low a small green LED lights up.

Warranty

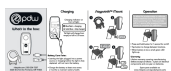
Lifetime warranty covering manufacturing defects except as follows: 2 years on electrical components and one year on batteries.

Spare parts available at: www.ridepdw.com/goods/spare-parts

CONTACT

- ridepdw.com
- 503-234-7257
- 3625 SE 21st Ave Portland, OR 97202

Documents / Resources



[pdw Gravity Plus USB Tail Light](#) [pdf] User Guide
Gravity Plus, USB Tail Light, Gravity Plus USB Tail Light, Tail Light, Light