




## PDQ TPMS Dual-Band 315/433 Programmable Sensor Installation Guide

[Home](#) » [PDQ TPMS](#) » PDQ TPMS Dual-Band 315/433 Programmable Sensor Installation Guide 



INSTALL GUIDE



TPMS TECH SUPPORT

DIAL 855.573.6748

[ALLIGATOR-VALVES.COM](http://ALLIGATOR-VALVES.COM)

sens.itRS+

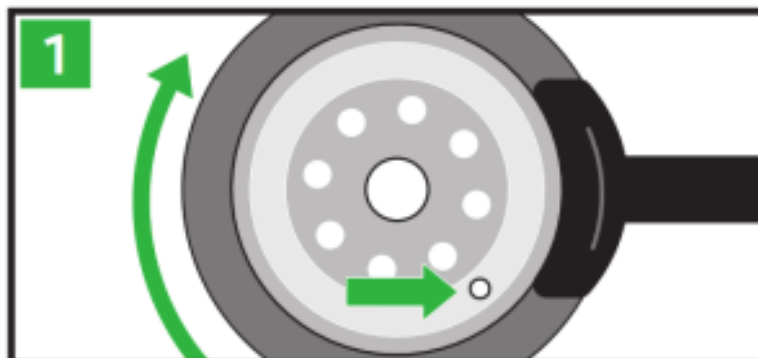
+ Dual-Band TPMS (315/433 MHz)

+ MAXCoverage™ Advantage

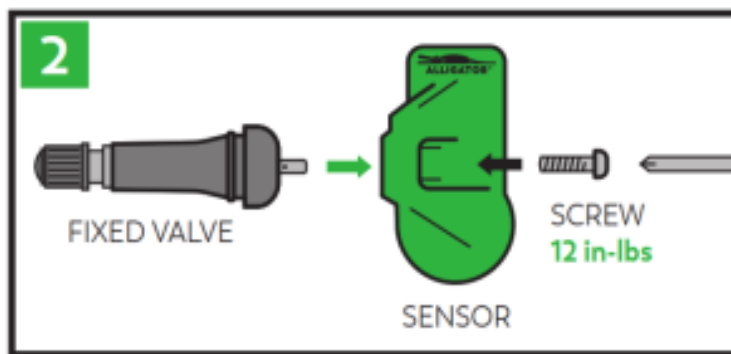
+ Proven OEM Functionality

+ Premium OEM valves

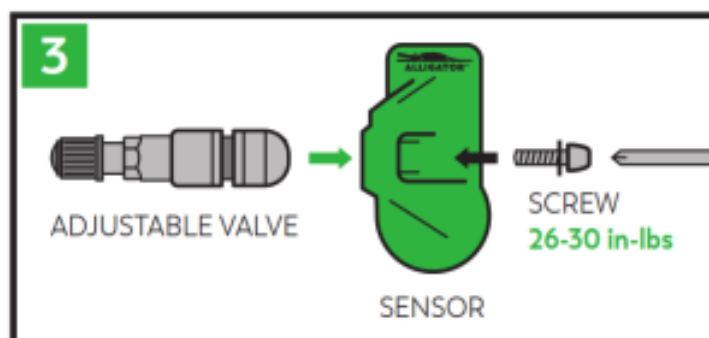
GO GREEN



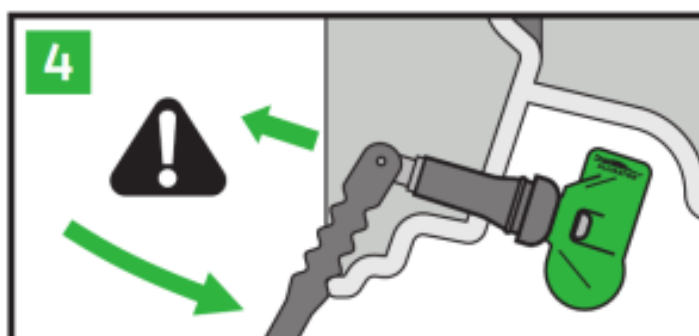
Dismount the tire  
Place valve ahead of mounting head



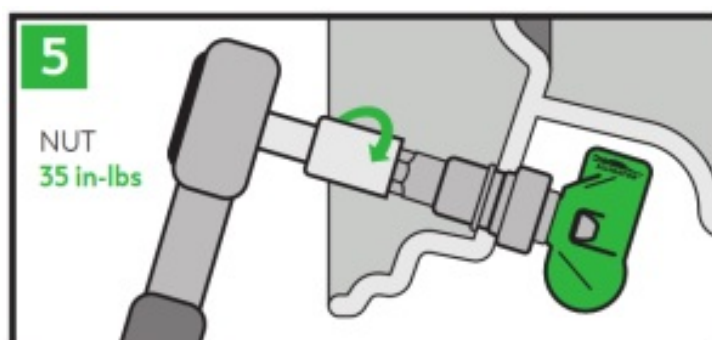
(Fixed Angle) Assemble the valve  
12 in-lbs torque



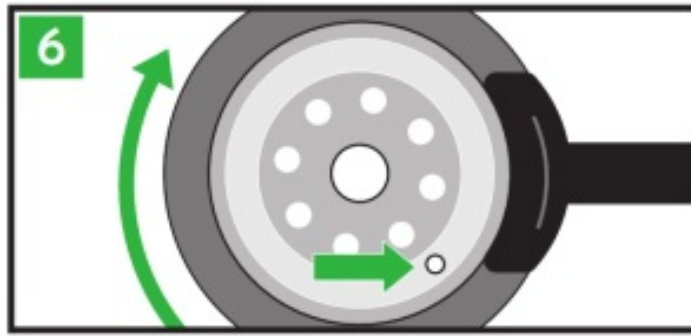
(Adjustable Angle) Assemble the valve  
26-30 in-lbs torque



(Rubber) Mount the valve  
Pull until seated



(Metal) Mount the valve  
35 in-lbs torque



Mount the tire  
Place valve ahead of the mounting head

**NOTE:** Alligator TPMS Sensors are for professional installation only. Please read all instructions before installing any TPMS sensor. Ensure proper fitment and functionality before extended driving of the vehicle takes place. Improper installation could cause vehicle system(s) failure. The TPMS Sensor included is for replacement or maintenance for passenger vehicles only that are already equipped with a factory-installed Tire Pressure Monitoring System (TPMS). TPMS systems do not replace the need for regular maintenance of the tire pressure or tire conditions on the vehicle.

**INTERFERENCE:** This device complies with Part 15 of the FCC Rules and Industry Canada licence-exempt RSS standard(s). Operation is subject to the following two conditions: (1) this device may not cause interference, and (2) this device must accept any interference, including interference that may cause undesired operation of the device.

**MODIFICATION:** WEGMANN automotive does not approve any changes or modifications to this device by the user. Any changes or modifications could void the user's authority to operate the equipment.

**RADIATION EXPOSURE:** This device complies with FCC/IC radiation exposure limits set forth for an uncontrolled environment and meets the FCC radio frequency (RF) Exposure Guidelines and RSS 102 of the IC radio frequency (RF) Exposure rules. The antenna should be installed and operated with a minimum distance of 20 cm between the radiator and your body. This transmitter must not be co-located or operating in conjunction with any other antenna or transmitter.

**WARRANTY:** Alligator guarantees that the TPMS sensor included in this package is free from material and manufacturing defects for 12-months or 15,000 miles, whichever comes first, from the date of proper installation or 24-months from the date of sale to an official Alligator dealer. Alligator does not replace any parts which have been mechanically damaged as a result of wrongful installation, a car accident, wrongful storage or misuse. Seller's liability under the foregoing warranty is expressly limited to repairing or replacing, at seller's option, any applicable product that does not meet the warranty. The maximum amount of any warranty claim shall be limited to the original purchase price of the claimed product. Seller's liability under this warranty shall not include any other charges or cost of installation, replacement, field repair, or any liability for direct, indirect or consequential damage or delay. Any improper use or installation, operation beyond standard practice, operation beyond rating, the substitution of parts not approved by seller, or any alteration or repair by parties other than the seller that in the seller's sole judgment affects the product materially shall void the warranty. All warranty-return claims are subject to the terms and conditions of the official Alligator warranty-return process policy (Jan 2021).

**Alligator is a brand of WEGMANN automotive.**

WEGMANN automotive USA Inc.

1715 Joe B Jackson Parkway

Murfreesboro, TN 37127

SERVICE FIRST LINE: 888-215-4575

TPMS HELP LINE: 855-573-6748

[wegmann-automotive.com](http://wegmann-automotive.com)

## FORM NO: 18409

Form associated with BOM MN SKUs: 030198 & 030199

Form provided in USA English and Canadian French.

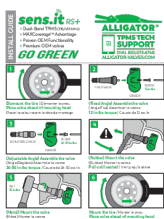
Questions can be sent to our TPMS HELP LINE: 855-573-6748

### Contents

[1 Documents /  
Resources](#)

[2 Related Posts](#)

## Documents / Resources

	<p><a href="#">PDQ TPMS Dual-Band 315/433 Programmable Sensor</a> [pdf] Installation Guide 030198, 2AUZ3030198, Dual-Band 315 433, Programmable Sensor, Dual-Band 433, Dual-Band 315 433 Programmable Sensor</p>
---	--

[Manuals+](#).