



PDP Xbox Series X-S PC Black Afterglow Wave Controller User Guide

[Home](#) » [PDP](#) » PDP Xbox Series X-S PC Black Afterglow Wave Controller User Guide 



AFTERGLOW® WAVE

Xbox Series X|S

Xbox One

Windows 10/11

WIRED CONTROLLER

MANETTE FILAIRE AFTERGLOW WAVE

Quick Start Guide

Contents

- [1 Xbox Series X-S PC Black Afterglow Wave Controller](#)
- [2 Initial setup](#)
- [3 Mute Microphone](#)
- [4 Control Volume](#)
- [5 Game/Chat Balance](#)
- [6 Program Back Buttons](#)
- [7 Changing Lighting Effects](#)
- [8 Adjust Lighting Settings on Controller](#)
- [9 Changing the Settings for the RGB Zones](#)
- [10 PDP Control Hub](#)
- [11 LIMITED WARRANTY](#)
- [12 Documents / Resources](#)
 - [12.1 References](#)
- [13 Related Posts](#)

2-Year Manufacturer's Warranty:

For product issues, contact us instead of returning to the store.



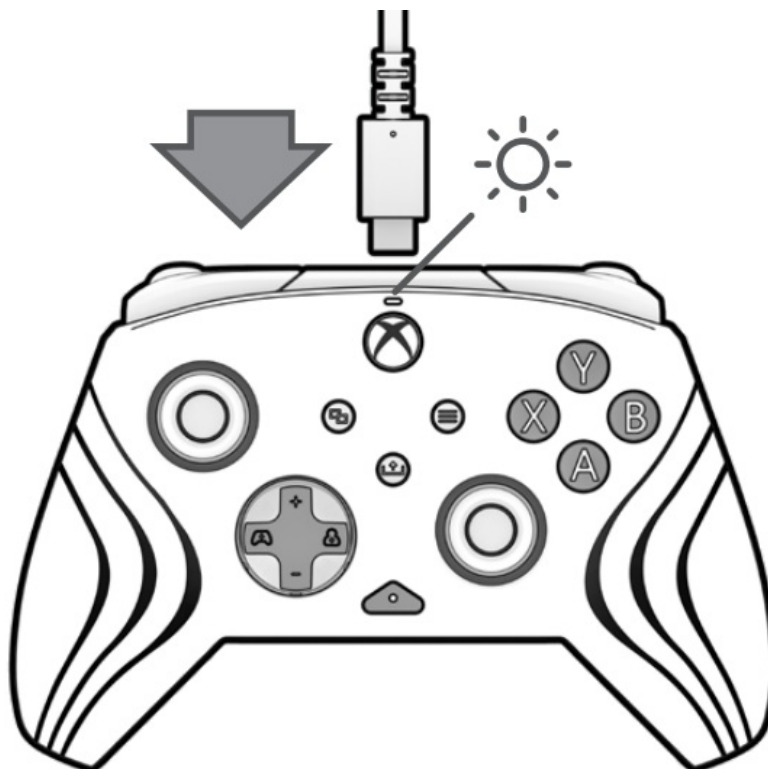
Further Warranty Information Inside



WARNING: CHOKING HAZARD

SMALL PARTS Not for children under 3 years.

Initial setup



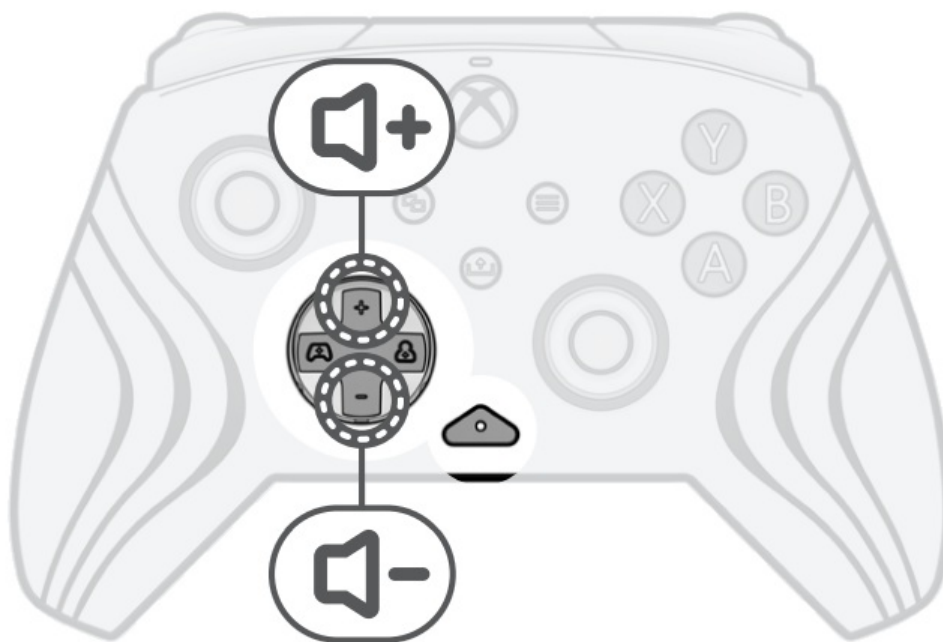
Plug the USB-C end of the cable into the top of the controller, and the USB side into your console or PC. The light above the Xbox logo will appear to indicate it is connected.

Mute Microphone



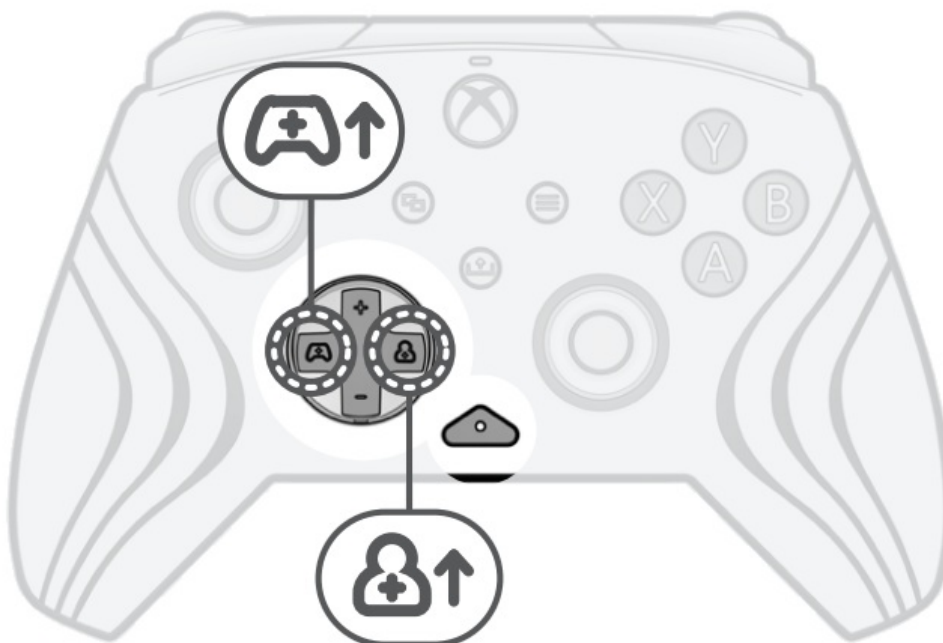
Press the function button, located above the audio jack, twice to mute your microphone.

Control Volume



While holding down the function button, press D-Pad +Up/-Down to adjust game volume.

Game/Chat Balance



While holding down the function button, press D-Pad Left/Right to adjust game/chat balance.

Program Back Buttons



- A. While holding down the function button, press the back button you would like to map a function to, and the function button LED will start flashing.
- B. Press any button you would like mapped, and the function button LED will flash 3 times indicating a successfully mapped function.
- C. To clear a mapped function or disable the back buttons completely, hold down the function button and double press any back button.

Changing Lighting Effects



- A. The Afterglow Wave Wired Controller comes with 4 Lighting Effects pre-programmed on the controller:
 - Static: The RGB lights will remain solid and set to a chosen color.
 - Wave: Displays a rainbow of RGB lights in a continuous motion.
 - Breathing: The RGB lights slowly fade in and out on a set color.
 - Rumble: The in-game rumble will activate a set color for the RGB lights.
 - B. To cycle through these lighting effects, hold down the function button and press either the L or R button.
 - C. You can also change and customize the controller's Lighting Effects in the free PDP Control Hub app.
 - D. Download the app and go to the "Customize RGB" section to access these additional Lighting Effects:
 - Ripple: The RGB lights will radiate outward from the analog sticks to the controller grips on a set color, brightness, and speed.
 - Pulse: The RGB lighting slowly fades in and out with brightness changes (first pulse bright, then weaker, and then fades out completely).
- Note:** Additional Lighting Effects will be added to the app through firmware updates, so be sure to update the controller firmware whenever prompted.

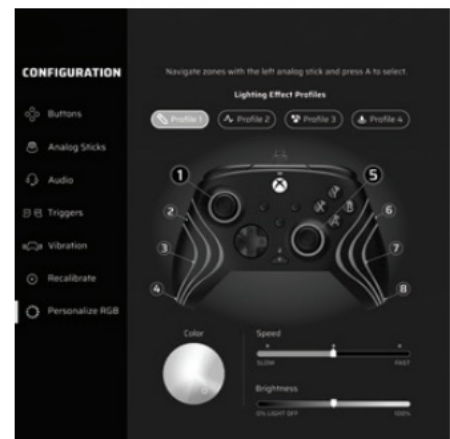
Adjust Lighting Settings on Controller



- A. Hold down the function button and use the left analog stick to change the LED color.
- B. Once you find the color you'd like, save the setting by releasing the function button.
- C. For white, hold down the function button and click in the left stick.
- D. To adjust the brightness, hold down the function button and press the left trigger.
- E. To turn off the lights completely, hold down the function button and press the left trigger until it cycles to 0% brightness.

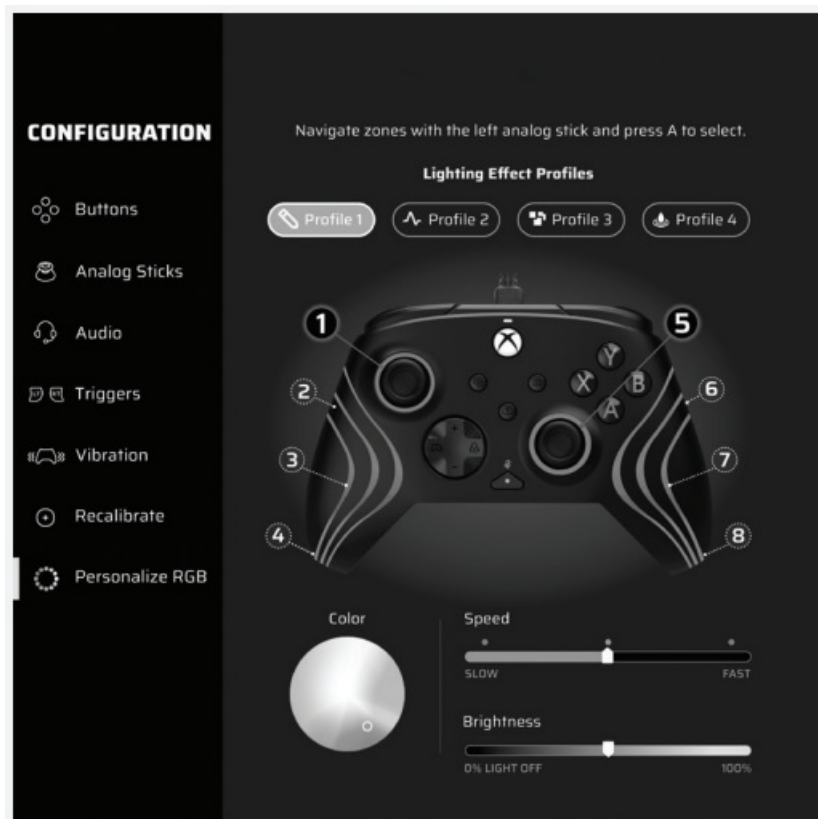
Note: These Lighting Settings and additional customizations can also be accessed in the free PDP Control Hub app.

Changing the Settings for the RGB Zones



The Afterglow Wave Wired Controller comes with 8 different RGB Zones that you can customize individually, or multiple at once. These RGB Zones can only be changed on the free PDP Control Hub app.

PDP Control Hub



Customize your controller on the PDP Control Hub app to make it as unique as you! Use the app to make additional lighting customizations to the Lighting Effects and RGB Zones. Change the colors, brightness, and speeds of the RGB lights, and set custom Lighting Profiles. You can also use the app to customize controller settings, like re-mapping buttons, running diagnostics, re-calibrating analog sticks and triggers, and much more. To start, download the free PDP Control Hub app from the Microsoft Store on your Xbox or PC.

Note: Additional Lighting Effects and advanced features will be added to the app in the future. To ensure you have access to all available features, make sure to update your controller's firmware when prompted.

LIMITED WARRANTY

- **Coverage and Term** • PDP warrants that this product will be free from manufacturing defects for two years from the original date of purchase. Manufacturing defects are those defects in materials and/or workmanship, subject to final determination by PDP's customer service department. This warranty applies only to original purchasers with a valid proof of purchase from an authorized PDP retailer that clearly shows the date of purchase.
- **Exclusive Remedy and Exclusions** • The exclusive remedy for valid claims will be the replacement, or refund of the product. This warranty does not cover defects caused by accidents, improper or abusive use of the product, unauthorized or improper modifications, repairs, or handling.
- **How to Get Service** • Purchasers with product issues should not return the product to the store, but instead contact PDP's customer service department first. You can contact PDP customer service by phone at 1-800-331-3844 (US and Canada only), Monday to Friday from 8 AM to 6 PM PST. International customers can contact us by phone at +442036957905. You can always reach us, 24/7, by visiting support.pdp.com and clicking the "Submit a Request" button top right of the page to open a support ticket. Inquiries are typically answered within 24 business hours.
- **Your Rights Under Applicable Law** • This warranty does not affect the legal rights of customers under applicable state, provincial, or national laws governing the sale of consumer goods.
- **Additional Information for Australian Consumers** • PDP products come with guarantees that cannot be

excluded under the Australian Consumer Law. You are entitled to a replacement or refund for a major failure and compensation for any other reasonably foreseeable loss or damage. You are also entitled to have the goods repaired or replaced if the goods fail to be of acceptable quality and the failure does not amount to a major failure. The benefits given to you under our express warranty are in addition to other rights and remedies you have under the Australian Consumer Law and other laws.

Need Help?

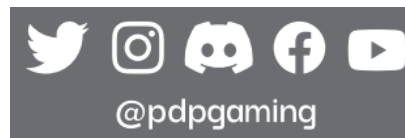
Visit support.pdp.com or talk to us at (800) 331-3844 (USA and Canada only) or +442036957905 (UK only).



555 South 65th Avenue, Suite 200,
Phoenix, AZ 85043
Herikerbergweg 88,
1101 CM Amsterdam, Netherlands
GPO Box 457 Brisbane
QLD 4001, Australia
Tower 42, 25 Old Broad Street,
London, EC2N 1HQ
US Patents

www.pdp.com/patents

This product is manufactured
and imported by Performance
Designed Products LLC.
Designed in the U.S.A. by PDP.
Made in China



© 2023 Performance Designed Products LLC. PDP, AFTERGLOW, and their respective logos are trademarks and/or registered trademarks of Performance Designed Products LLC. All rights reserved. Microsoft, Xbox, Xbox "Sphere" Design, Xbox Series X|S, Xbox One, and Windows 10/11 are trademarks of the Microsoft group of companies. All other trademarks are the property of their respective owners.

Please keep this information for future reference.

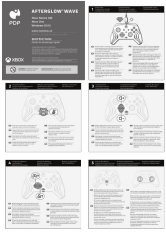
This device complies with Part 15 of the FCC Rules. Operation is subject to the following two conditions: (1) this device may not cause harmful interference, and (2) this device must accept any interference received, including interference that may cause undesired operation.



pdp.com

CAN ICES-3 (B)/ NMB-3 (B)

Documents / Resources



[PDP Xbox Series X-S PC Black Afterglow Wave Controller](#) [pdf] User Guide
Xbox Series X-S, PC Black Afterglow Wave Controller, Afterglow Wave Controller, PC Black Wave Controller, Wave Controller, Controller

References

- [PDP - Licensed Xbox, Switch, PlayStation and PC Controllers & Headsets](#)
- [Patents](#)

Manuals+.