



## PDI-LCD-GRID-MT LCD Grid Mount Instruction Manual

[Home](#) » [PDi](#) » PDI-LCD-GRID-MT LCD Grid Mount Instruction Manual 



### **LCD-GRID-MT LCD Grid Mount Instruction Manual**

#### **MODEL NUMBER:**

PDI-LCD-GRID-MT & PDI-DUAL-GRID-MT  
LCD Grid Mount Installation Instructions

Document Number:

PD196-055R10

### **Scope:**

A PDi primary LCD TV mount is required to attach the TV(s) to this PDI-LCD-GRID-MT or PDI-DUAL-GRID-MT. The primary LCD The TV mount must match the VESA mounting pattern of the TV to be mounted. For simplicity, only PDI-LCD-GRID-MT is shown

**Note:** The maximum capacity for these mounts is 65 pounds.

### **Contents**

- [1 Safety Steps:](#)
- [2 Tool List:](#)
- [3 Procedure](#)
- [4 Assembling Lower Support](#)
- [5 Assembling Mounting Bracket Assembly](#)
- [6 Optional Attachment of Outlet Electrical Box:](#)
- [7 Documents / Resources](#)
- [8 Related Posts](#)

## Safety Steps:

1. Always wear safety glasses/goggles to prevent injury from debris.
2. Follow the installation/removal instructions for your existing products.

## Tool List:

1. P1 or P2, Phillips screwdriver
2. 5/32" Allen wrench
3. 3/16" Allen wrench
4. 7/16" Hex wrench
5. Safety glasses/goggles

## Bill of Materials:

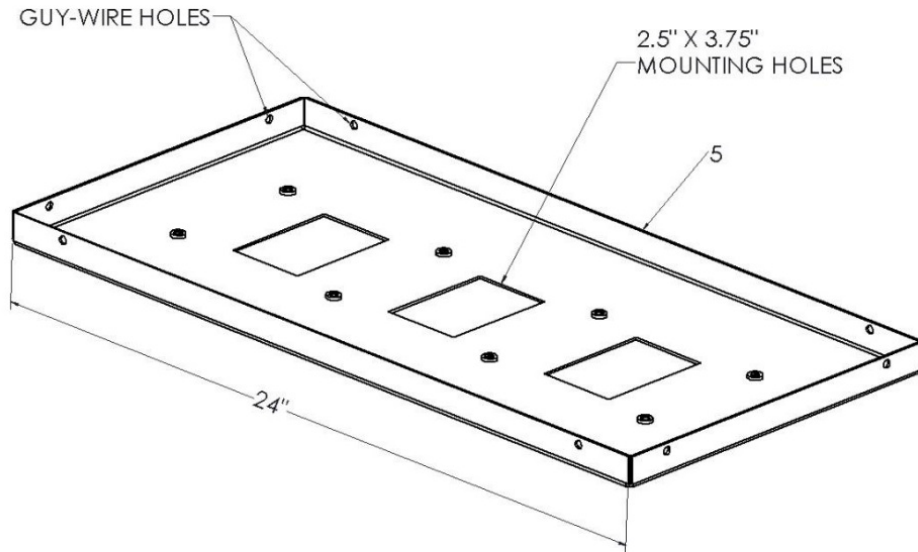
Item	Part Number	Description	QTY
1	PD122-001	Synthetic Grease	1
2	PD185-001	Rotational Stop Collar	2
3	PD198-003	10 ft. Power Cord	1
4	PD235-002	Loctite. #242 Blue	1
5	PD240-001	Upper Support	1
6	PD240-002	Lower Support	1
	PD240-003 or PD 240-003-DUAL	Mounting Bracket	1
8	PDI-590	Sleeve	2
9	PDIBHSCS252038	1/4-20 x 3/8" Button Head Cap Screw	2 (4 for PDI-DUAL-GRID-MT)
10	PDIBHSCS252050	1/4-20 x 1/2" Button Head Cap Screw	1
11	PDIBHSCS252062	1/4-20 x 5/8" Button Head Cap Screw	1
12	PDINILN2520	1/4-20 Nylock Nut	6
13	PDIPPHMS2520200	1/4-20 x 2" Phillips Pan Head Machine Screw	4
14	PDISHCS252020	1/4-20 x 1/4" Socket Head Cap Screw	1
15	PDISHN2520	1/4-20 Standard Hex Nut	1

## Procedure

### Mounting Upper Support

1. Find desired mounting location and remove adjacent tiles for a workspace.

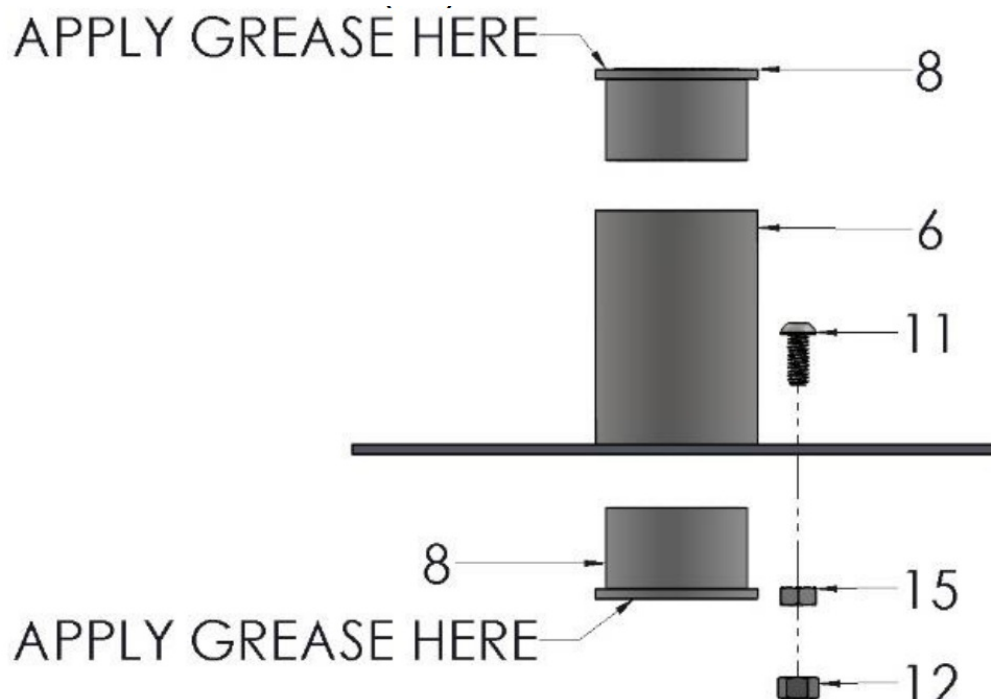
2. Place PD240-001 Upper Support (#5) on top of the tile, across the 24" dimension, that the assembly will be mounted to, and string the required guy-wires but DO NOT attach to the PD240-001 Upper Support (#1). Verify the correct type of guy wire required per local building code.
3. Determine which of the three (3) sets of mounting holes will be used to provide the best placement for the installation.



Cut ONE of the 2-1/2" x 3-3/4" holes out of the tile and drill pilot holes (3/16" diameter) for the four (4) mounting screws.

### Assembling Lower Support

1. Install one (1) PDIBHSCS252062 Screw (#11) and one (1) PDIHN2520 Standard Nut (#15) into the PD240-002 Lower Support (#6) as shown and securely tighten.
2. Install one (1) PDINILN2520 Nylock Nut (#12) to the PDIBHSCS252062 Screw (#11) as shown and securely tighten.
3. Install two (2) PDI-590 Sleeves (#8) into the PD240-002 Lower Support (#6) as shown and apply PD122-001 Synthetic Grease (#1) to surfaces of the PDI-590 Sleeves (#8).

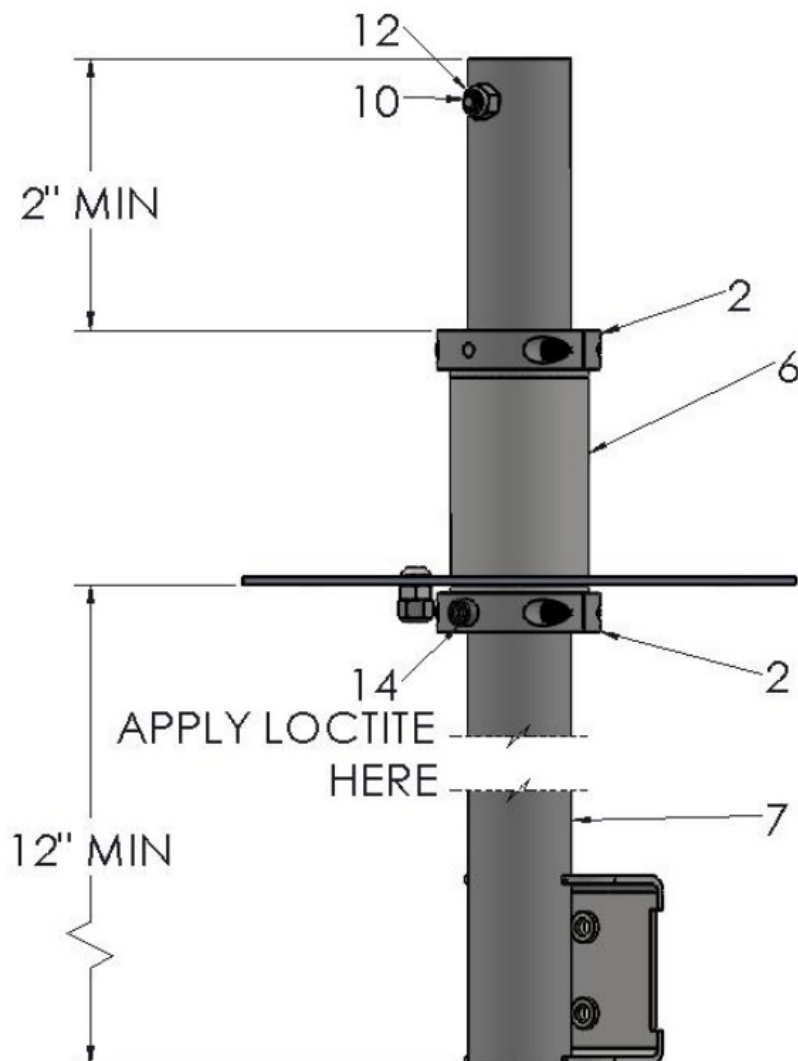


## Assembling Mounting Bracket Assembly

1. Determine the desired mounting height for the LCD. Note: There must be a minimum of 12" from the PD240-002 Lower Support (#6) to the bottom of the PD240-003 or PD240-003-DUAL Mounting Bracket (#7). There must also be a minimum of 2" from the top of the upper PD185-001 Rotational Stop Collar (#2) and the top of the PD240-003 or PD240-003-DUAL Mounting Bracket (#7).
2. Slide one (1) PD185-001 Stop Collar (#2) over the PD240-003 or PD240-003-DUAL Mounting Bracket (#7) and securely tighten at the desired mounting height.
3. Slide the PD240-002 Lower Support (#6) onto the PD240-003 or PD240-003-DUAL Mounting Bracket (#7) until it rests on the PD185-001 Support Collar (#2) and install one (1) PD185-001 Rotational Stop Collar (#2) on top of the PD240002 Lower Support (#6). Securely tighten both PD185-001 Rotational Stop Collars (#2) at the desired mounting height.

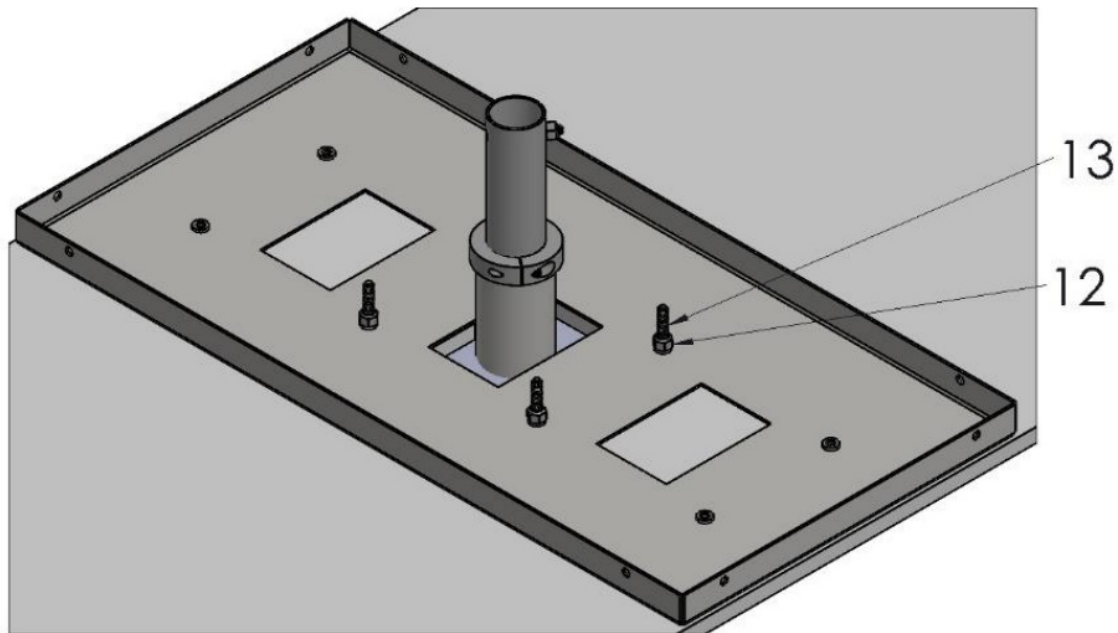
**Note:** If additional clearance is needed in the ceiling, the PD240-003 or PD240-003-DUAL Mounting Bracket (#7) can be trimmed to no less than 2" above the upper PD185-001 Rotational Stop Collar (#2). If this is done, drill a new 17/64" hole for the PDIBHSCS252050 Screw and deburr the inside of the tube to prevent damage to the cables.

4. Install one (1) PDIBHSCS2520 Screw (#10) from the inside of the PD240-003 or PD240-003-DUAL Mounting Bracket (#7) as shown using one (1) PDINILN2520 (#12). This is a required safety screw.
5. Install one (1) PDISHCS252025 Screw (#14) with PD235-002 Loctite (#4), into the bottom PD185-001 Rotational Stop Collar (#2).



## Attach the Mounting Bracket to the Ceiling

1. Insert the PD240-003 or PD240-003-DUAL Mounting Bracket (#7) through a hole in the ceiling tile and attach the PD240-002 Lower Support (#6) to the PD240-001 Upper Support (#5) with four (4) PDIPPHMS2520200 Screws (#13) and four (4) PDINILN2520 Nylock Nuts (#12). Be careful to not over-tighten the screws and crush the tile. **Note:** There must be a minimum of 12" from the ceiling tile to the bottom of the PD240-003 or PD240-003-DUAL Mounting Bracket (#7).
2. Attach the guy wires to the PD240-001 Upper Support (#5).
3. Install the primary LCD TV mount(s) to the PD240-003 or PD240-003-DUAL Mounting Bracket (#7) using two (2) PDIBHSCS252038 Screws for each primary LCD TV Mount.



## Optional Attachment of Outlet Electrical Box:

1. Select an appropriately sized single gang "OLD WORK" or "REMODELING" electrical box.
2. Cut only ONE of the remaining rectangular holes in the PD240-001 Upper Support (#5) through the ceiling tile to match the electrical box.
3. Install the electrical box per the manufacturer's instructions. Be careful not to over-tighten the screws and crush the tile.

PDi Communication Systems, Inc.  
40 Greenwood Lane Springboro, Ohio  
45066 USA PH 1-800-628-9870

FX 937-743-5664



## Documents / Resources



**[PDi PDI-LCD-GRID-MT LCD Grid Mount](#) [pdf] Instruction Manual**  
PDI-LCD-GRID-MT, PDI-DUAL-GRID-MT, LCD Grid Mount