



PCsensor TEMPer2 Sensor USB Thermometer User Manual

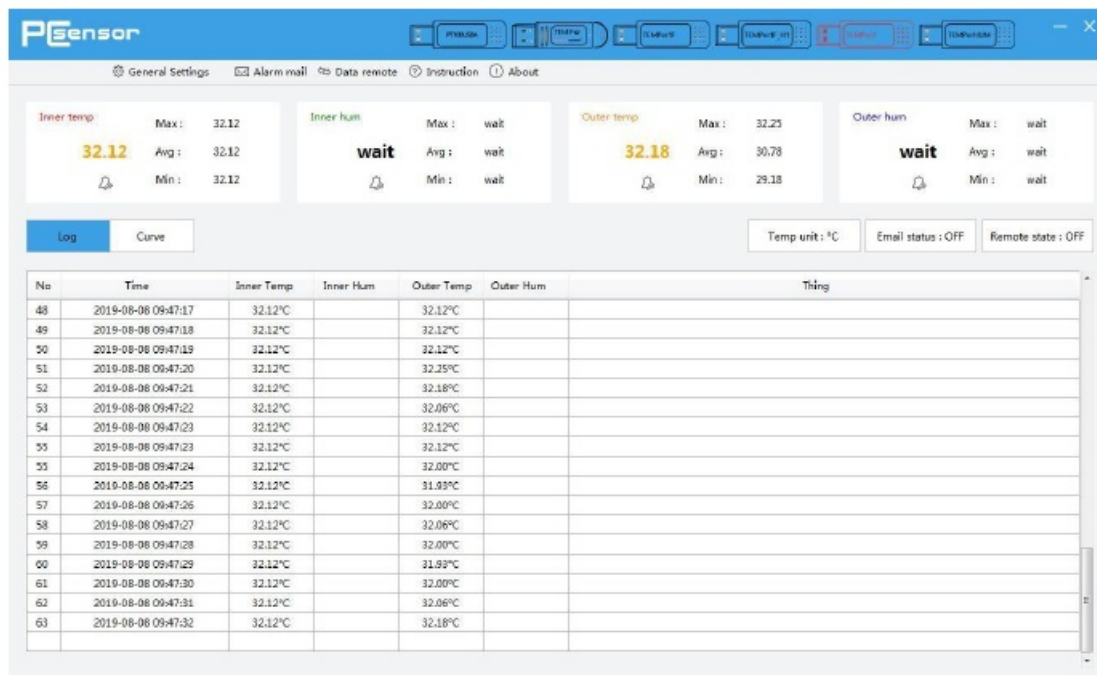
[Home](#) » [PCsensor](#) » PCsensor TEMPer2 Sensor USB Thermometer User Manual 

Contents

- [1 PCsensor TEMPer2 Sensor USB Thermometer](#)
- [2 How to use](#)
- [3 Functions](#)
- [4 EMAIL FUNCTION](#)
- [5 Data Remote](#)
- [6 General Setting](#)
- [7 Contact us](#)
- [8 Documents / Resources](#)
 - [8.1 References](#)
- [9 Related Posts](#)



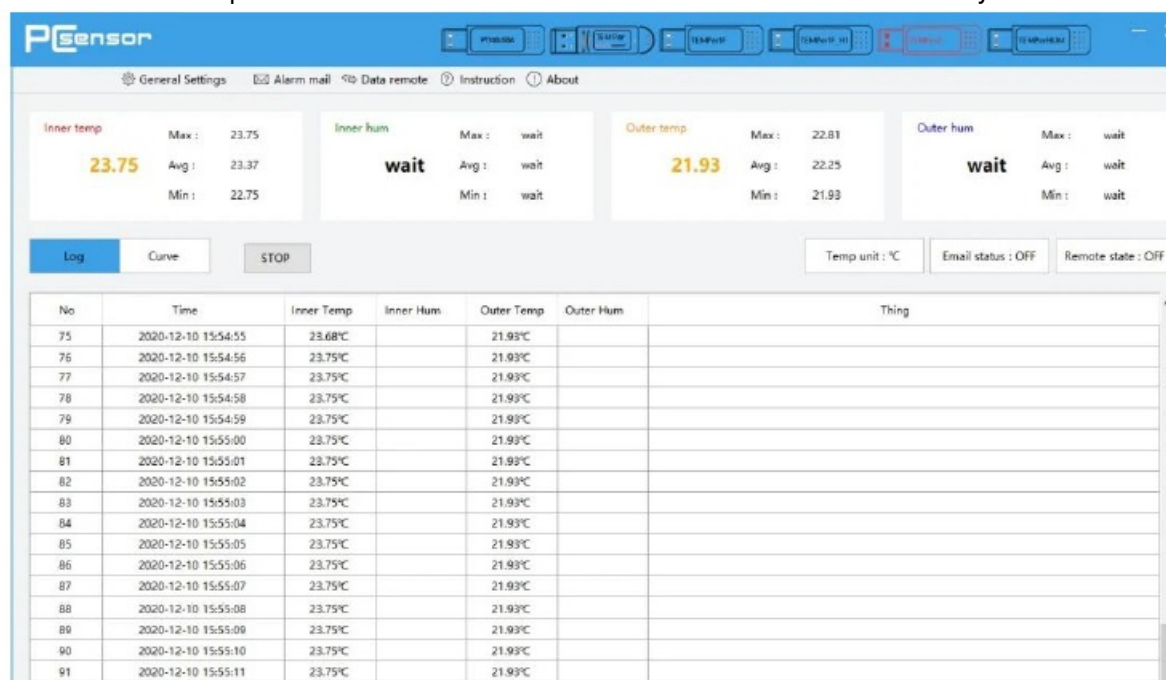
PCsensor TEMPer2 Sensor USB Thermometer



Functions

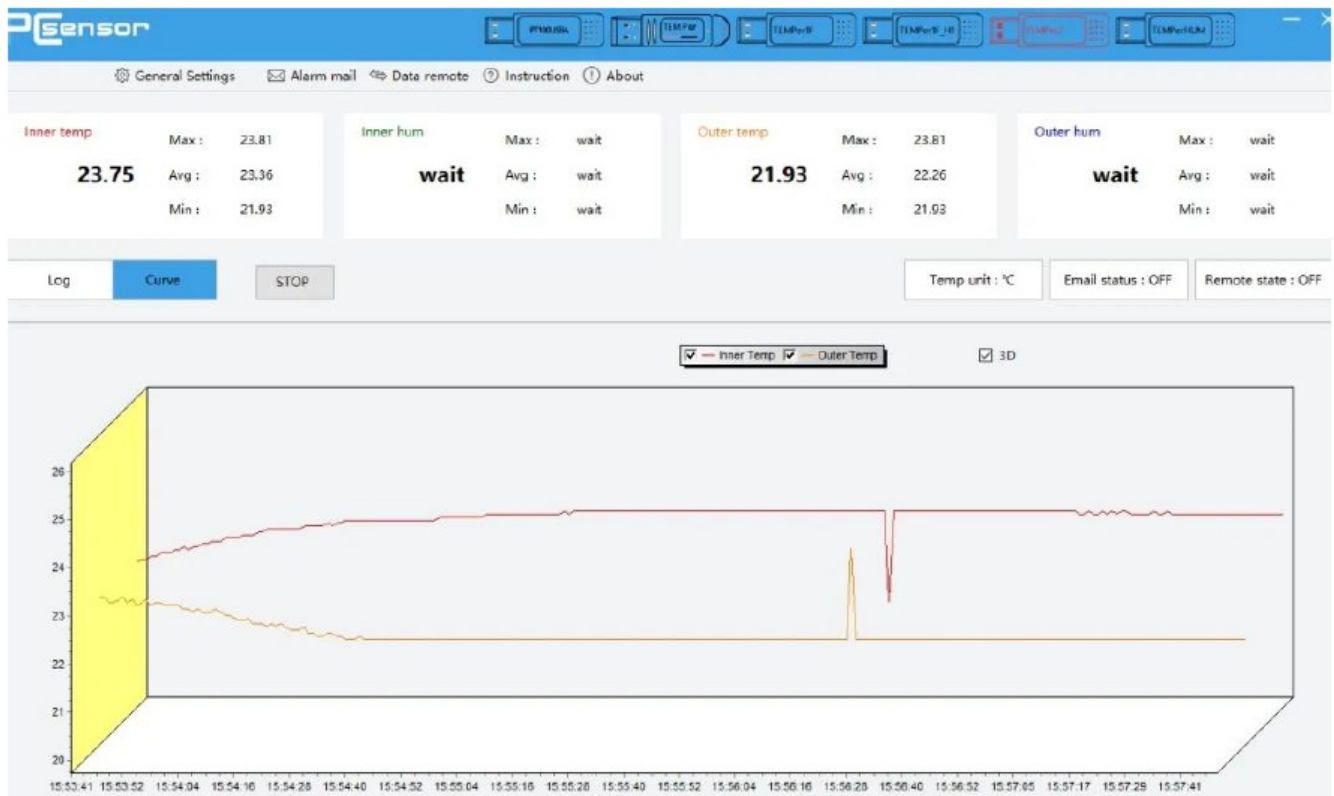
LOG

Record the Real-time Temperature Data and Save Them in the Related File Automatically.



CURVES DISPLAY

The Curves can Real-time Display the Changing Situation of Temperature. The Tendency of Curves Responds the Real-time Temperature Situation. ADVISE: Please Check the Log or Data File in Save Contents When You Want to Check the Historical Data.



EMAIL FUNCTION

Fill in the Related Information of Email and Save it. The Requirement of Send

Email: Support POP3/SMTP and Other Server Port. Receive Email you can fill in two. Related Function: 1) when the Alarm is on, it will send the Email to Specifie Email Box Automatically if the Temperature Reach the Alarm Limit. 2) You can set the Sending Interval, and then it will send the Email to the Specified Mail Box at Set Intervals. (Advise) 3) it can Send Email Continuously to the Specified Mail Box. (Deprecated feature)

Alarm mail Data remote Instruction About

Inner hum Outer temp Outer hum

Alarm mail

Send email

Account:

Password:

SMTP:

Port: ☐ Secure Connection (SSL)

Receive email

Name1:

Account1:

Name2:

Account2:

Send content

Theme:

Content:

Send mode

☒ Alarm

☐ Continuous (unit: minute)

Email status

☐ ON ☒ OFF

Save

Help

Help

1. outlook

2. gmail

outlook mail setting: must open the state of pop3/smtp in your account

Account: Email Account [Login the outlook mail](#)

Password: Email Password

SMTP: smtp.mail.outlook.com

Port: 587

SSL: YES

Tip: you need to verify your new account if first register, just click the link in the email which send by Microsoft

Options

General

Mail

Automatic processing

Automatic replies

Inbox and sweep rules

Mark as read

Message options

Read receipts

Save Discard

POP and IMAP

POP options

Let devices and apps use POP

☒ Yes

Data Remote

you can view the data remote in other computer after you log in the registering account.

Data remote

Account:

Pass:

☐ Remember your account password

Login

Note: after login successfully, enter remote state

[Account registration](#)

General Setting

- ## Contact us

Skype: pcsensor-rding

Documents / Resources

References

- Manuals+,**