



PCsensor FS2016BT1 Bluetooth USB Single Foot Switch User Manual

[Home](#) » [PCsensor](#) » PCsensor FS2016BT1 Bluetooth USB Single Foot Switch User Manual 

Contents

- [1 PCsensor FS2016BT1 Bluetooth USB Single Foot Switch](#)
- [2 FS2016BT1_D Product Description](#)
- [3 Product parameters](#)
- [4 Bluetooth pairing](#)
- [5 Operating Instructions](#)
- [6 Software description](#)
- [7 FCC Statement](#)
- [8 Documents / Resources](#)
 - [8.1 References](#)
- [9 Related Posts](#)



PCsensor FS2016BT1 Bluetooth USB Single Foot Switch



FS2016BT1_D Product Description

FS2016BT1_D is a button Bluetooth footswitch, keys can be customized to keyboard, mouse and other functions can be connected through Bluetooth or USB cable connection. Users can define keys for keyboard function, mouse function, string printing function, multimedia function and macro definition function through the supporting software.

1. Keyboard function: can be set to any key-value or combination key (including F 13 to F 24 etc.), such as key-value A or CTRL+A function.
2. Mouse function: can be set to left, middle, right of mouse button or scrolling wheel either in the horizontal or vertical direction.
3. String input: a maximum of 38 characters can be set, such as www.pcsensor.com.
4. Multimedia function: support multimedia function, such as the previous, the next, volume up, volume down and so on.
5. Macro definition function: can define a series of keyboard and mouse action combinations, for example, set Ctrl+P delay 100ms after the return to realize automatic printing function.

Product parameters

1. Product Name A one-key Bluetooth footswitch
2. Product model FS2016BT1_D
3. Bluetooth coverage radius $\geq 10\text{m}$
4. Bluetooth version Bluetooth 4.2
5. Power Supply Voltage AAA(No.7)*2 battery
6. working current 2mA

7. Switch service life More than a million times
8. Connection method: Bluetooth/USB

Bluetooth pairing

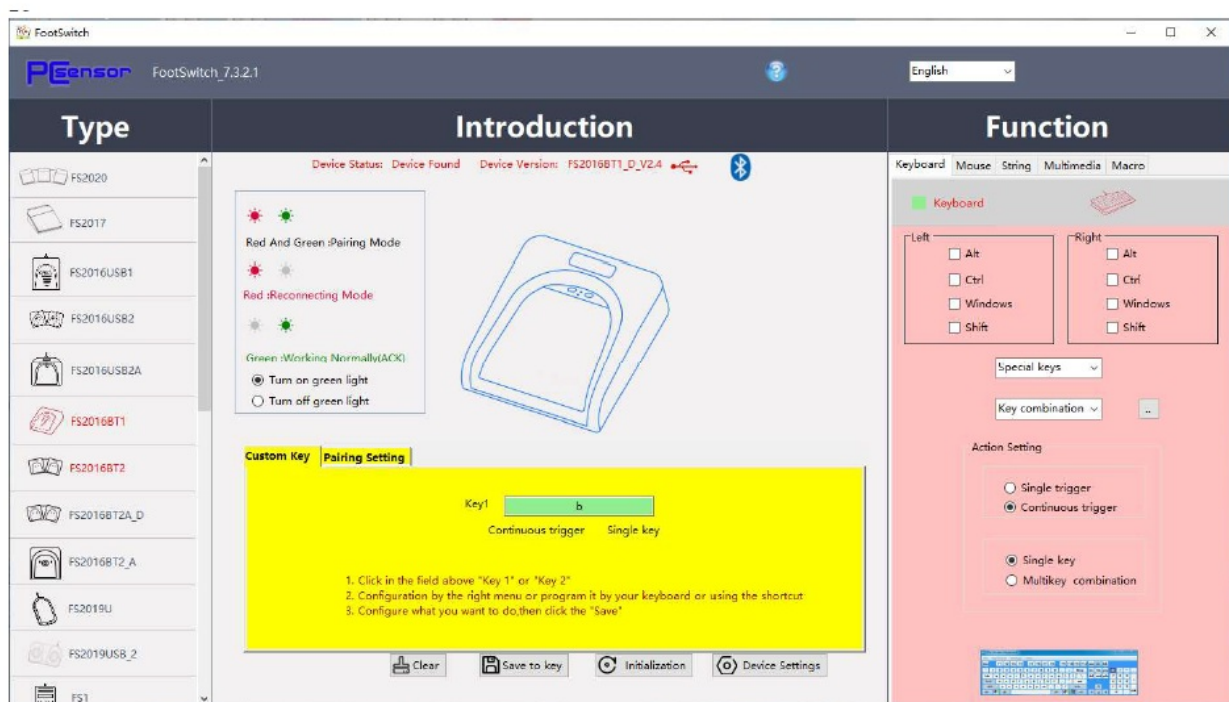
The product is compatible with android, Windows8, Windows10, IOS and MMac OS systems. The blinking red and green light indicates that the device is in pairing mode, you can connect the device with your mobile phone or computer. Blinking red and green: In pairing mode, users can search for the device through Bluetooth-enabled devices, such as computers and mobile phones, and then pair the device. Blinking red: In connection back mode, the device is connecting to the device that was paired last time. Blinking green: Data is normally sent after the pairing succeeds

Operating Instructions

First, press the "connect" key for 2 seconds to make the device enter the pairing mode (the red and green light in pairing mode flash simultaneously), turn on the Bluetooth function of the mobile phone or computer, search the nearby Bluetooth device, find "FS2016BT1_D" and click to connect when the device is connected, the green light blinks twice to indicate that the connection is successful. Hold down the ON/OFF button for 2 seconds to power OFF the device. To power ON the device, press the ON/OFF button again.

Software description

Software download address: www.pcsensor.com/software1, Download and install the latest version of FootSwitch software, which only supports the Windows system at present. The software interface is as follows:



Clear button can delete the currently set key-value. Save to key button: Save to key button save the current Settings. Initialization button used to restore the function to factory. Settings Device Settings used to set low power alarm function. When low power alarm is turned on, the red light will flash once every three seconds when the equipment power is lower than 10%. Function set

1. Connect the device to the USB port of the computer;
2. Run FootSwitch software;
3. Click the Select function window;

4. Select or enter the key value to be set;
5. Click the "Save to key" button to complete the setting.

Modify Bluetooth name: You can modify the name of Bluetooth in Pairing setting. Click "Pairing setting", enter the character to be added in the input box of the device name, and click "Save to key" to complete the modification of Bluetooth name, as shown below:

Set the sleep time: Click "Pairing Setting" to set the sleep time in the input box of sleep time. The sleep time indicates how long the device will enter the sleep state after no action (Pedal no action).

FCC Statement

This equipment has been tested and found to comply with the limits for a Class B digital device, pursuant to part 15 of the FCC rules. These limits are designed to provide reasonable protection against harmful interference in a residential installation. This equipment generates, uses and can radiate radio frequency energy and, if not installed and used in accordance with the instructions, may cause harmful interference to radio communications. However, there is no guarantee that interference will not occur in a particular installation. If this equipment does cause harmful interference to radio or television reception, which can be determined by turning the equipment off and on, the user is encouraged to try to correct the interference by one or more of the following measures:

- Reorient or relocate the receiving antenna.
- Increase the separation between the equipment and receiver.
- Connect the equipment into an outlet on a circuit different from that to which the receiver is connected.
- Consult the dealer or an experienced radio/TV technician for help.

To assure continued compliance, any changes or modifications not expressly approved by the party.

Responsible for compliance could void the user's authority to operate this equipment. (Example- use only shielded interface cables when connecting to computer or peripheral devices). This equipment complies with Part 15 of the FCC Rules. Operation is subject to the following two conditions:

1. This device may not cause harmful interference, and
2. This device must accept any interference received, including interference that may cause undesired operation.

RF warning statement:

The device has been evaluated to meet general RF exposure requirements. The device can be used in portable exposure conditions without restriction.

Documents / Resources

 www.pcsensor.com FS2016BT1 Product Description  Product picture FS2016BT1 is a compact Bluetooth module for remote control and control of various devices. It is designed for use in a wide range of applications, including home automation, industrial control, and medical equipment. The module is small, lightweight, and easy to install. It features a USB interface and a single foot switch. The module is compatible with Windows, Mac OS, and Linux. It is also compatible with various Bluetooth devices, including smartphones, tablets, and laptops. The module is designed for long-term use and is highly reliable. It is a perfect choice for anyone looking for a compact and reliable Bluetooth module for remote control and control of various devices. Product parameters 1. Model: FS2016BT1 2. Interface: USB 3. Power supply: 5VDC 4. Operating voltage: 3.3VDC 5. Operating current: 10mA 6. Operating temperature: -40°C to 85°C 7. Storage temperature: -55°C to 125°C 8. Humidity: 10% to 90% RH 9. Shock: 1000g 10. Vibration: 10g 11. EMI: CE, FCC, RoHS 12. Safety: UL, CE, RoHS 13. Packaging: 1000 pieces per box 14. Lead time: 1 week 15. Warranty: 1 year	<p>PCsensor FS2016BT1 Bluetooth USB Single Foot Switch [pdf] User Manual</p> <p>FS2016BT1D, 2A54D-FS2016BT1D, 2A54DFS2016BT1D, FS2016BT1 Bluetooth USB Single Foot Switch, FS2016BT1, Bluetooth USB Single Foot Switch</p>
---	--

References

-  [PCsensor RDingtech RDing](#)
-  [PCsensor RDingtech RDing](#)