



Paxton APN-1167 Binding and Configuring a PaxLock Pro User Guide

[Home](#) » [Paxton](#) » Paxton APN-1167 Binding and Configuring a PaxLock Pro User Guide 



Binding and configuring a Pax Lock Pro
Net2
APN-1167



Contents

1 Overview

2 Enrolling a Pax Lock Pro

3 Configuring a Pax Lock Pro

4 Troubleshooting

5 Documents / Resources

5.1 References

Overview

The Pax Lock Pro is a battery powered wireless access control unit. Often used where cabling is expensive or impractical, the Pax Lock Pro can be installed directly onto a door.

The Pax Lock Pro uses a Net2Air bridge to communicate with the Net2 system, using Paxton proprietary wireless technology.

See also:

AN1096 – How to plan a Net2 wireless installation < <http://paxton.info/975> >

Enrolling a Pax Lock Pro

To enroll a Pax Lock Pro, it must bind to a Net2Air bridge. Simply present a user token that is in the database to the reader, and the Pax Lock will transmit this data out to a Net2Air bridge.

If more than one bridge replies, the Pax Lock checks the signal strength and selects the strongest bridge to communicate with. The Net2 PC then confirms that the user card presented is in the database and if so will proceed to bind the PaxLock to the system.

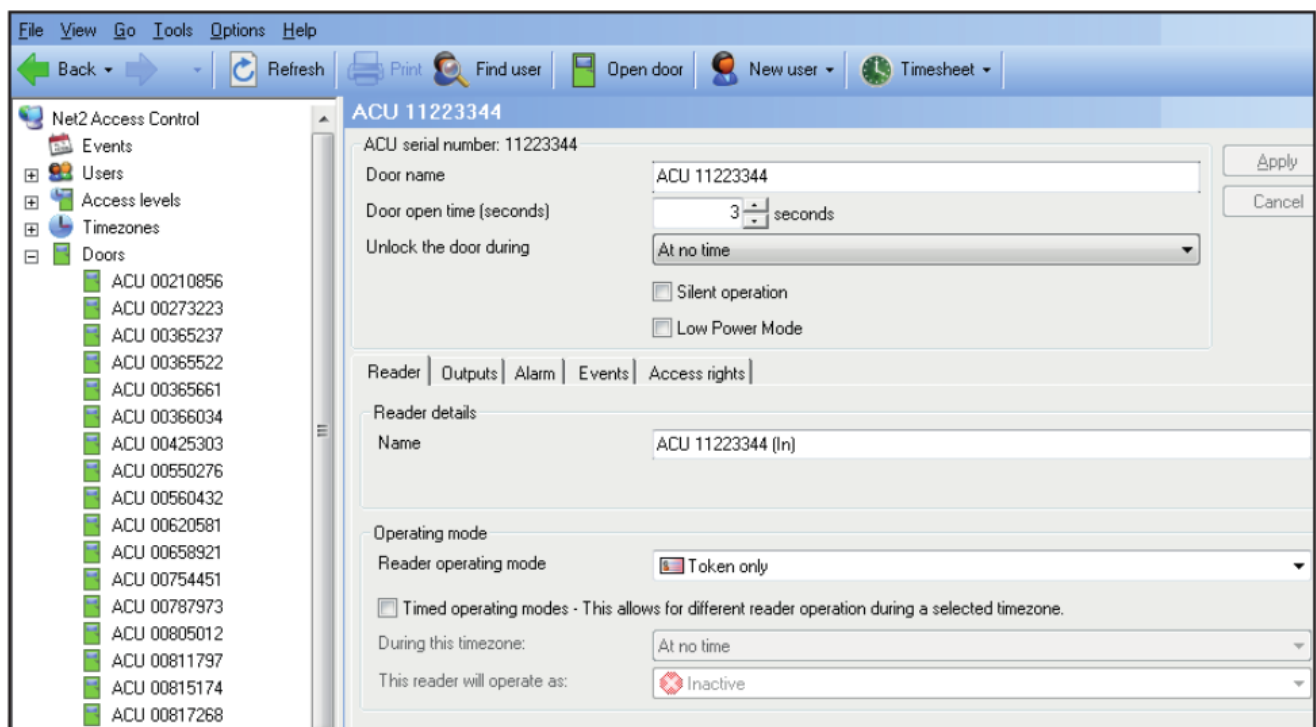
The Pax Lock LED will flash Green to confirm binding in progress. An alternating Red/Green flash indicates a software update is in progress.

If the Pax Lock is repositioned or the environment changes, it will automatically rebind to the bridge providing the strongest signal.

Configuring a Pax Lock Pro

Following the installation and binding of a Pax Lock Pro to the Net2 Software, configuring the unit is extremely simple.

Double clicking on the specific door in the doors tab within Net2 will open up the door configuration window. Here, a selection of changes can be made to the door to configure the unit as appropriate.



Door name: Name the door.

Door open time: Set the door open time.

Unlock the Door during: Holds the door unlocked during this time zone. Set to 'At No Time' for normal user operation.

Reader: Local settings for the reader.

Output: Configures the lock for timed release or toggle mode

Events: Shows the events for this control unit only.

Access Rights: List the time zone and each user who have access through this door

Troubleshooting

Problem	Recommendation
The firmware update keeps failing	Ideally you should have 3-4 bars of signal to ensure optimal performance. Should your Pax Lock Pro consistently report less than this, look at re-locating the bridge.
The Pax Lock Pro is not detected in the Net2 software and/or won't bind to the Net2 system	Check you have added the Net2Air bridge to the system via the Net2 configuration utility. Also ensure you have bound the Pax Lock Pro to the system by presenting a token to the Pax Lock Pro that has been added to the Net2 database. Remove the Pax Lock Pro from the door and take it closer to the Net2Air bridge. If it then binds successfully you will need to relocate the bridge to ensure the Pax Lock Pro has a better signal. If the Pax Lock Pro has been previously bound to a different system, it will need to be reset. Follow the reset procedure outlined in the instructions.
The Pax Lock Pro keeps going offline	If the Pax Lock Pro has low signal in normal operation, moveable obstructions such as vehicles or people may be causing it to go offline. The Net2Air bridge may need to be re-located to give better signal strength. Adding an additional Net2 Air Bridge will increase the wireless range.
The site uses a shared wireless network with heavy usage. At certain times of the day the Net2 system is unable to communicate.	The Net2 wireless system must be able to co-exist with an existing network. In most cases it can do so without any changes required. Where there is limited bandwidth or very high data usage it is recommended to use channels 1 and 6 for the WIFI network and avoid channel 11. Contact Support for further assistance.
When I open the door, the latch isn't fully retracting	The Pax Lock Pro requires a lock case with a turning angle of 45° or less. If the handle is not fully retracting it is likely the lock case does not meet this requirement and will need replacing. Note: This information is not applicable to the Pax Lock US
The Pax Lock Pro is clicking when a token is presented and not opening the door	Check you have followed the guidelines on the rear of the template included in the box. Contact Support for further assistance.
When I present a token the Pax Lock Pro is not responding	Ensure the token you are presenting is a format supported by the Pax Lock Pro. Supported formats are shown on the datasheet. If the unit still fails to operate it could indicate the batteries need replacing. Check the battery status in the Net2 software or change the batteries for known charged ones.
I have added a new user but they are being denied access at the door	Check if access denied events are being sent to Net2. If they are not, it would indicate there is no connection established between the Pax Lock Pro and the Net2Air bridge. Follow the recommendations to re-establish communications above.





[Paxton APN-1167 Binding and Configuring a PaxLock Pro](#) [pdf] User Guide
APN-1167 Binding and Configuring a PaxLock Pro, APN-1167, Binding and Configuring a PaxLock Pro, Configuring a PaxLock Pro, a PaxLock Pro, PaxLock Pro

References

- paxton.info/975