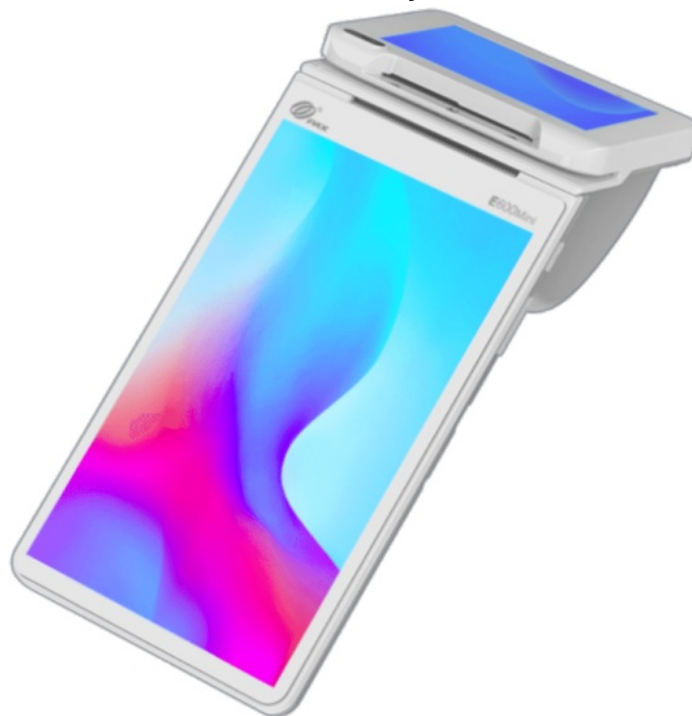




PAX E600 Mini All-in-One Android Payment Terminal User Manual

[Home](#) » [Pax](#) » PAX E600 Mini All-in-One Android Payment Terminal User Manual 

PAX E600 Mini All-in-One Android Payment Terminal User Manual



Contents

- [1 Overview](#)
- [2 Setup](#)
- [3 Documents / Resources](#)
 - [3.1 References](#)
- [4 Related Posts](#)

Overview

Accepting payments is effortless with the PAX E600 Mini. Discover how the E600 device seamlessly meets your POS needs through lightning-fast Wi-Fi and Bluetooth connection. Whether managing a brick-and-mortar store or running a farmer's market stall, this wireless smart terminal can simplify the checkout process wherever you go.

Click here to [**purchase the PAX E600 Mini**](#) from our online shop.

Setup

How to Load Paper Roll

1. Press the printer cover button to open the receipt paper compartment.
2. Insert thermal receipt paper roll with the end facing upward.
3. Close the printer cover latch and tear off any excess paper using the printer cutter.

How to Turn On/Off

- **Power On:** Press and hold the power button for approximately three seconds until you see a display on your screen.
- **Power Off:** Press and hold the power button until a menu appears onscreen with an option that reads SHUTDOWN.
Select SHUTDOWN.

How to Set Up a Wifi Connection

1. From POS menu, select SETTINGS.
2. Select NETWORK & INTERNET.
3. Select WIFI.
4. Select your WiFi network. When prompted, enter your personalized network password.
5. Select CONNECT.

PAX E600 Mini – Default Password

The default password for the PAX E600 Mini will either be 9876 or pax9876@@.

Documents / Resources



[PAX E600 Mini All-in-One Android Payment Terminal](#) [pdf] User Manual
E600, E600 Mini All-in-One Android Payment Terminal, Mini All-in-One Android Payment Terminal, Android Payment Terminal, Payment Terminal, Terminal

References

- [User Manual](#)

[Manuals+](#), [Privacy Policy](#)

This website is an independent publication and is neither affiliated with nor endorsed by any of the trademark owners. The "Bluetooth®" word mark and logos are registered trademarks owned by Bluetooth SIG, Inc. The "Wi-Fi®" word mark and logos are registered trademarks owned by the Wi-Fi Alliance. Any use of these marks on this website does not imply any affiliation with or endorsement.