

Contents [[hide](#)]

- [1 PawHut D08 Battery Powered Automatic Feeder](#)
- [2 INTRODUCTION](#)
- [3 Bottom of equipment](#)
- [4 Operation Instruction](#)
- [5 Specification](#)
- [6 Install the food storage tray](#)
- [7 Documents / Resources](#)
 - [7.1 References](#)



PawHut D08 Battery Powered Automatic Feeder



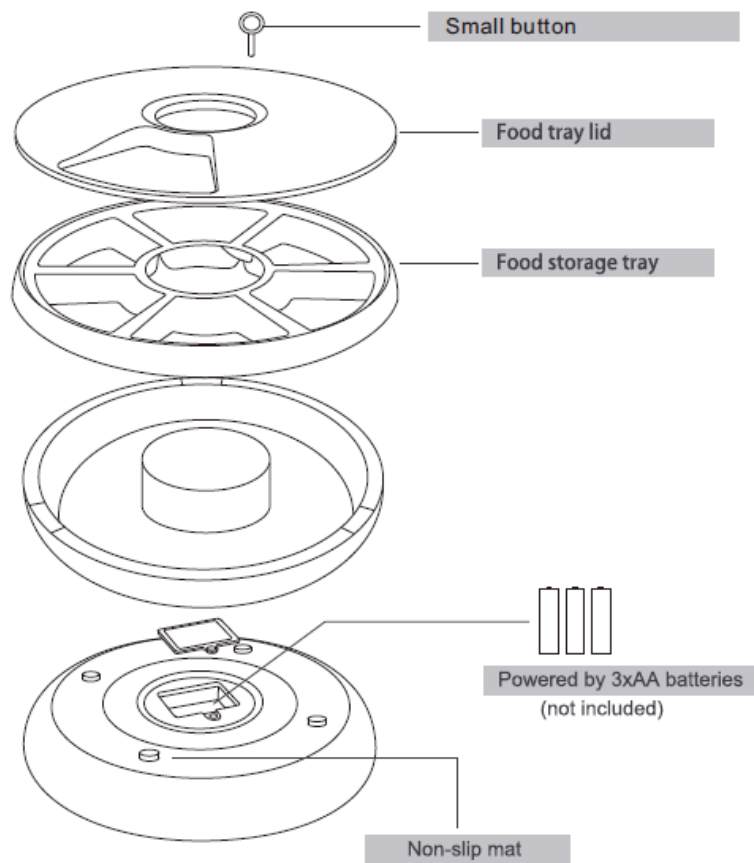
IMPORTANT, RETAIN FOR FUTURE REFERENCE: READ CAREFULLY.

- This appliance can be used by children aged from 8 years and above and persons with reduced physical, sensory or mental capabilities or lack of experience and knowledge if they have been given supervision or instruction concerning use of the appliance in a safe way and understand the hazards involved.
- Children shall not play with the appliance.
- Cleaning and user maintenance shall not be made by children without supervision.
- non-rechargeable batteries are not to be recharged;
- rechargeable batteries are to be removed from the appliance before being charged;
- different types of batteries or new and used batteries are not to be mixed;
- batteries are to be inserted with the correct polarity;
- exhausted batteries are to be removed from the appliance and safely disposed of;
- if the appliance is to be stored unused for a long period, the batteries should be removed;
- the supply terminals are not to be short-circuited.

INTRODUCTION

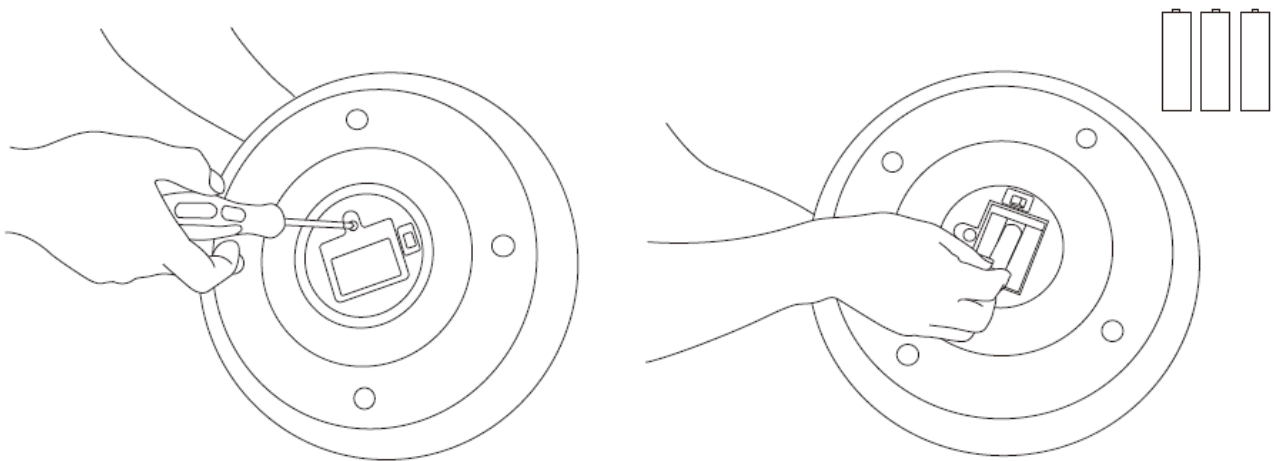
Thank you for purchasing Automatic Pet Feeder.

Please read these instructions carefully and keep this manual for future reference.



Bottom of equipment

1.

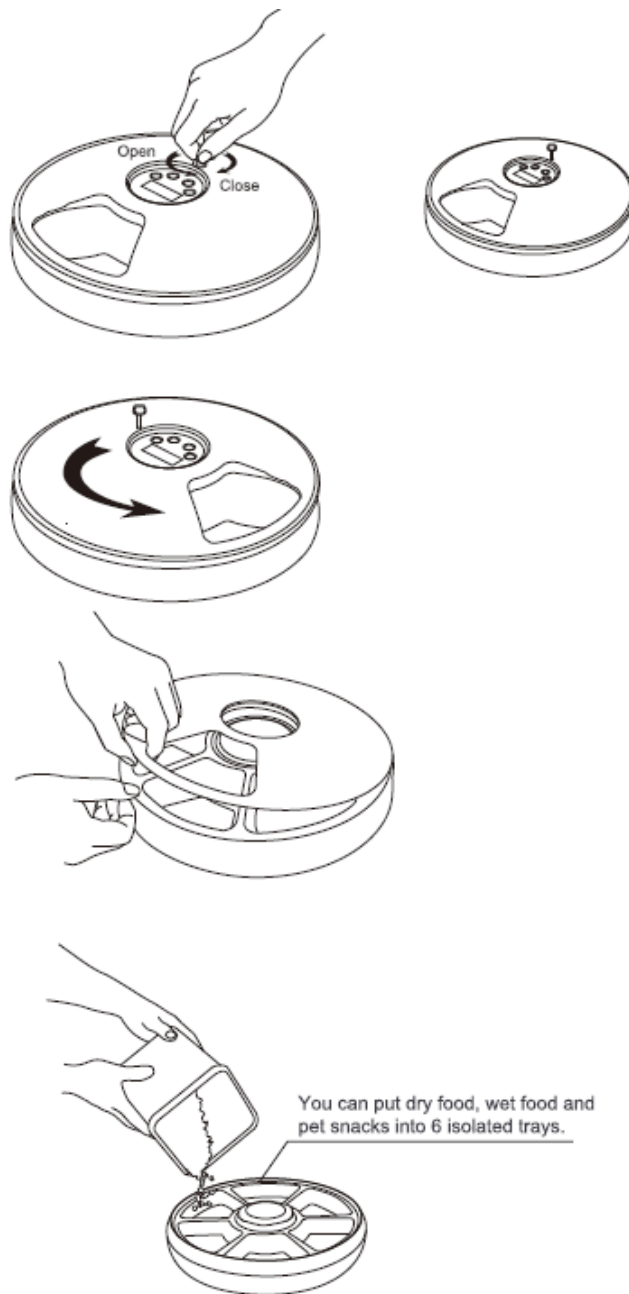


Unscrew the battery compartment cover with a screwdriver.

2. Install 3xAA batteries and tighten the cover.

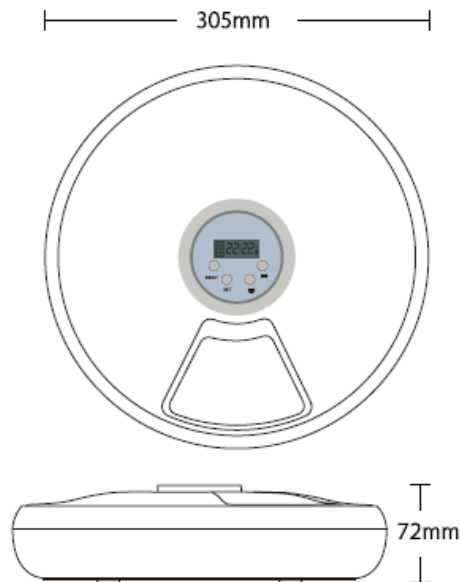
Operation Instruction

1. Loose the small button
2. Turn the lid counterclockwise by hand to open the top cover
3. Lift the lid up.
4. Pour in the pet food

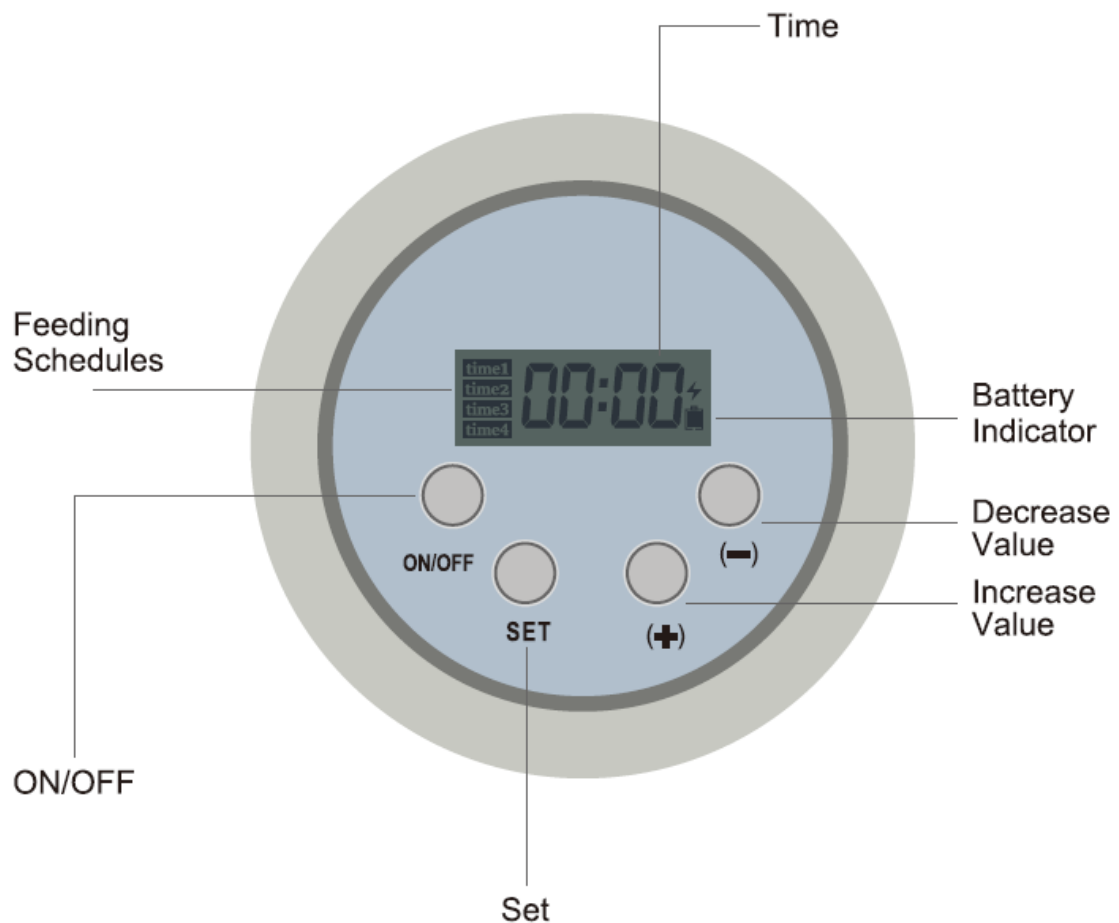


Specification

- Product Name: 6 Meals Automatic Pet Feeder
- Dimensions: 305x305x72mm
- Item Weight : 0.9kg
- Material: ABS, PC
- Color: White and Grey
- Powered by 3xAA batteries



Control panel



Time setting

The feeder remembers your personalized settings every time and uses a 24 hour clock system. which be divided into 4 times per 24 hours. The default timing of **time1** is 06:00, **time2** is 11:00, **time3** is 16:00, **time4** is 21:00.



Every feeding times arrived, the feeder will play a part of music automatically to attract the pets come and help feeding, which not support to set or change.

1. Wake up and lock Screen

Wake up: press the " ON/OFF " button and the screen will light and display "12:00" by default, the device is wakes up.

Lock screen: after time and feeding plan setting completed, press the " ON/OFF " button, all functions of the whole machine are turned off, and the background memory of the current settings (provided that the power is not interrupted)

2. Time setting

In the wake-up state, short press the " SET " button, the hour icon "12" will flash, short press the " +1 " button to switch time. Next, short press the " SET " button again, the minute icon will flash, short press " +/ - " to switch the minutes. Last, press the " SET " button again to confirm that the current time setting is completed, and the screen displays the current time.

3. Feeding plan setting

In the wake-up state, long press the " SET " button for 3 seconds, the time icon will flash and the hour will flash (the default time is 06:00), press " +/- " key to set the desired hour. and then short press the " SET " button switch to minutes. at this time, press the " + | - " key to set the desired minute. Press the setting button again, the time icon flashes and the hour flashes (the default timing time is 11:00), you can also set the time at will; when the time? icon flashes and the hour flashes, press the " +/ - " key to set When the hour is required, press the " SET " button again and the time icon and the minute will flash. At this time, press the " +/- " button to set the required minute. time3 and time4 setting same as before.

4. Feeding plan times cancel setting Cancel setting:

If one of the four periods of time is not need, repeat the steps of feeding plan time setting, press the the " SET " button to set the one of feeding plan timing to 00:00, press the " - " button to " -: - ", the feeding plan times is canceled, times icons won't

show up for a while. we will keep it in the feeding times setting procedure inside for recover. Recover setting: repeat the steps of feeding plan time setting, press the the "SET" button to find the one of feeding plan which shows " -;- ", press the " - " button, the feeding plan times is recover, times icons will show up again.

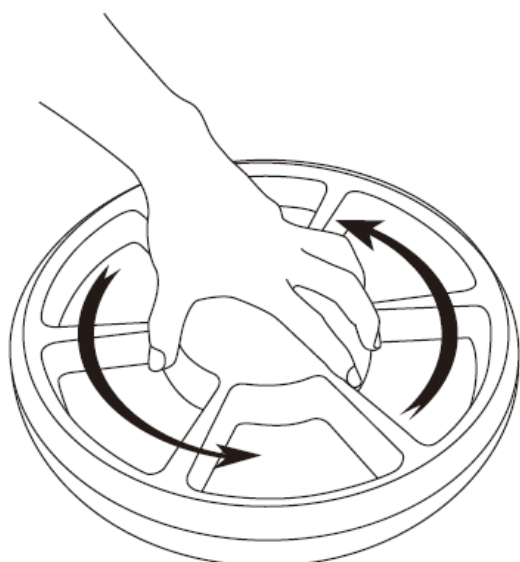
Feeding times cancel states



1. Turn counterclockwise to open the food storage tray.
2. Rinse the food storage tray with water.

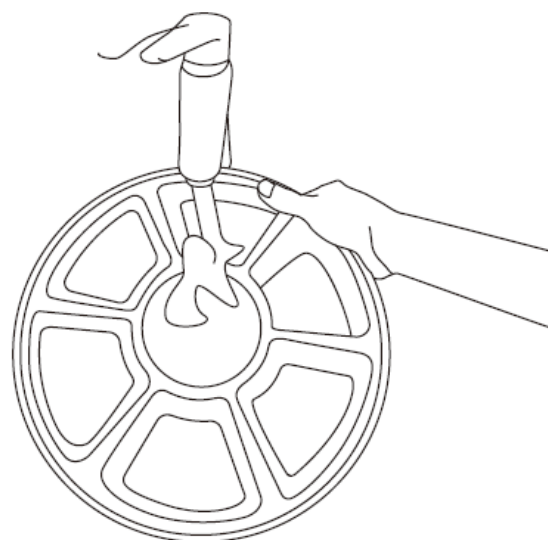
Install the food storage tray

1.



Align a with band put them in place.

2. Tighten clockwise.



CAUTION If it is not tightened, it may cause the position of the food storage tray to shift and misalignment.

If you have any questions, please contact our customer care center, Our contact details


are below: 001-[877-644-9366](tel:877-644-9366) customerservice@aosom.com

Imported by Aosom LLC

27150 SW Kinsman Rd Wilsonville, OR 97070 USA

MADE IN CHINA

Documents / Resources

	PawHut D08 Battery Powered Automatic Feeder [pdf] Installation Guide D08-027, IN220900839V02_GL, D08 Battery Powered Automatic Feeder, Battery Powered Automatic Feeder, Powered Automatic Feeder, Automatic Feeder, Feeder
---	--

References

- [User Manual](#)

📁 PawHut

🔍 Automatic Feeder, Battery Powered Automatic Feeder, D08 Battery Powered Automatic Feeder, D08-027, Feeder, IN220900839V02_GL, PawHut, Powered Automatic Feeder

Leave a comment

Your email address will not be published. Required fields are marked *

Comment *

Name

Email

Website

☐ Save my name, email, and website in this browser for the next time I comment.

Post Comment

Search:

e.g. whirlpool wrf535swhz

Search

[Manuals+](#) | [Upload](#) | [Deep Search](#) | [Privacy Policy](#) | [@manuals.plus](#) | [YouTube](#)

This website is an independent publication and is neither affiliated with nor endorsed by any of the trademark owners. The "Bluetooth®" word mark and logos are registered trademarks owned by Bluetooth SIG, Inc. The "Wi-Fi®" word mark and logos are registered trademarks owned by the Wi-Fi Alliance. Any use of these marks on this website does not imply any affiliation with or endorsement.