

PawHut
D08-039V0
0 Elevated
Feeder



PawHut D08-039V00 Elevated Feeder Installation Guide

[Home](#) » [PawHut](#) » PawHut D08-039V00 Elevated Feeder Installation Guide 

Contents

- [1 PawHut D08-039V00 Elevated Feeder](#)
- [2 Product Information](#)
- [3 Product Usage Instructions](#)
- [4 PARTS](#)
- [5 USING CAM LOCK AND QUICKFIT](#)
- [6 INSTALLATION INSTRUCTION](#)
- [7 Documents / Resources](#)
 - [7.1 References](#)
- [8 Related Posts](#)



PawHut D08-039V00 Elevated Feeder



Product Information

Specifications

- **Model:** IN220800228V01_GL
- **Version:** D08-039V00
- **Steps:** 12
- **Duration:** 60 minutes
- **Dimensions:** A 32, B 32, D 8, C 1, E 2

Product Usage Instructions

Step 1: Assembling the Product

Follow the assembly instructions provided in the manual to put together the product.

Step 2: Setting Up

Place the product in a suitable location with enough space around it for operation.

Step 3: Power On

Connect the product to a power source and switch it on using the designated power button.

Step 4: Operating the Product

Refer to the user manual for detailed instructions on how to use the product effectively.

FAQ (Frequently Asked Questions)

- **Q: How long is the warranty period for this product?**

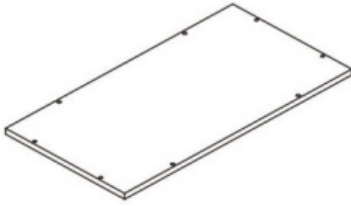
A: The warranty period for this product is one year from the date of purchase.

- **Q: Can this product be used outdoors?**

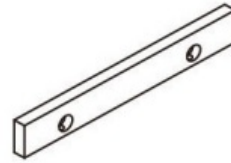
A: This product is designed for indoor use only and should not be used outdoors.

PARTS

① x 1



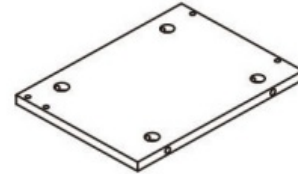
② x 2



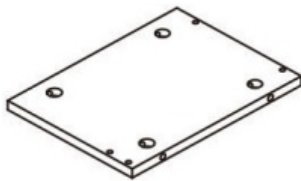
③ x 2



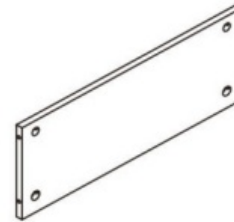
④ x 1

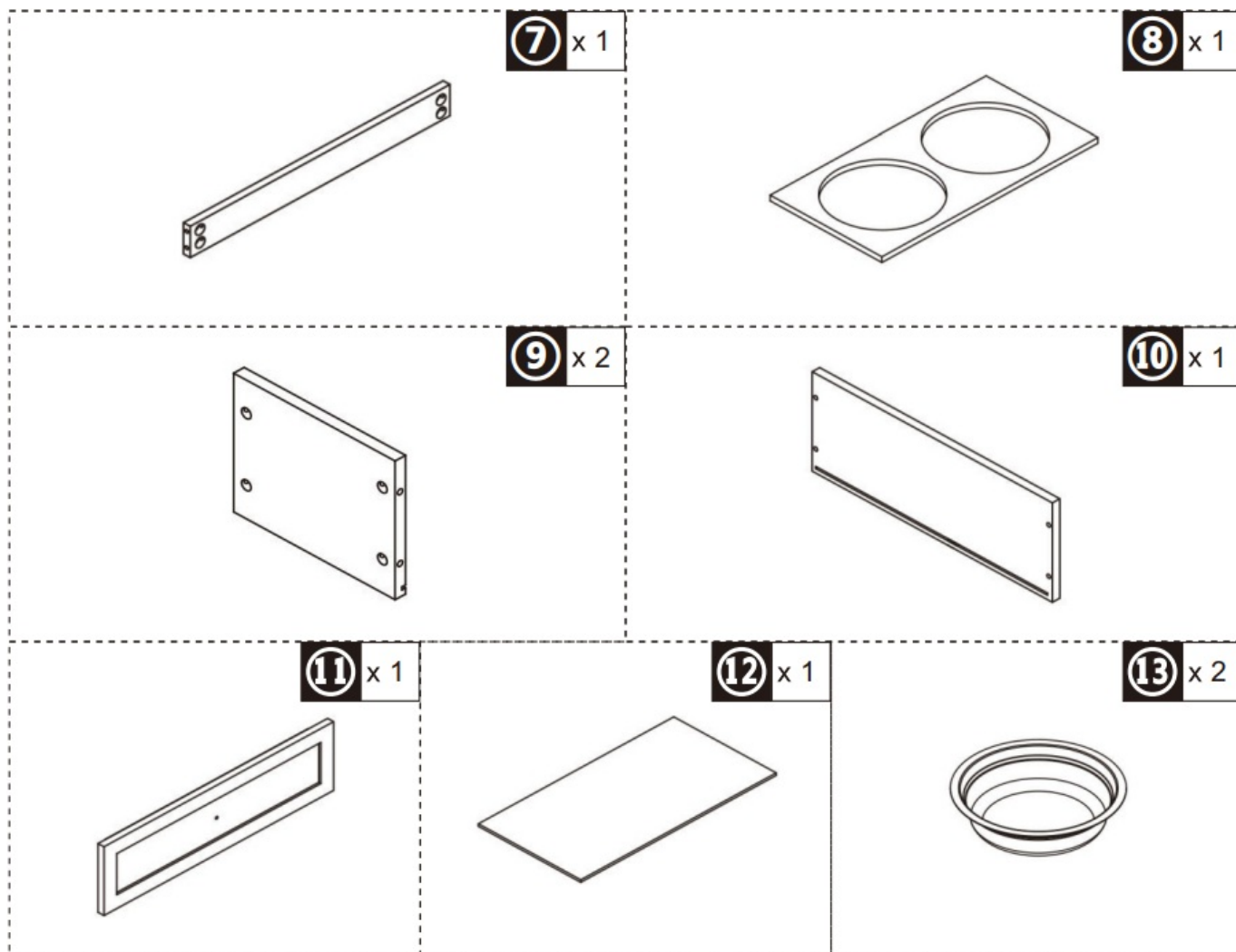


⑤ x 1

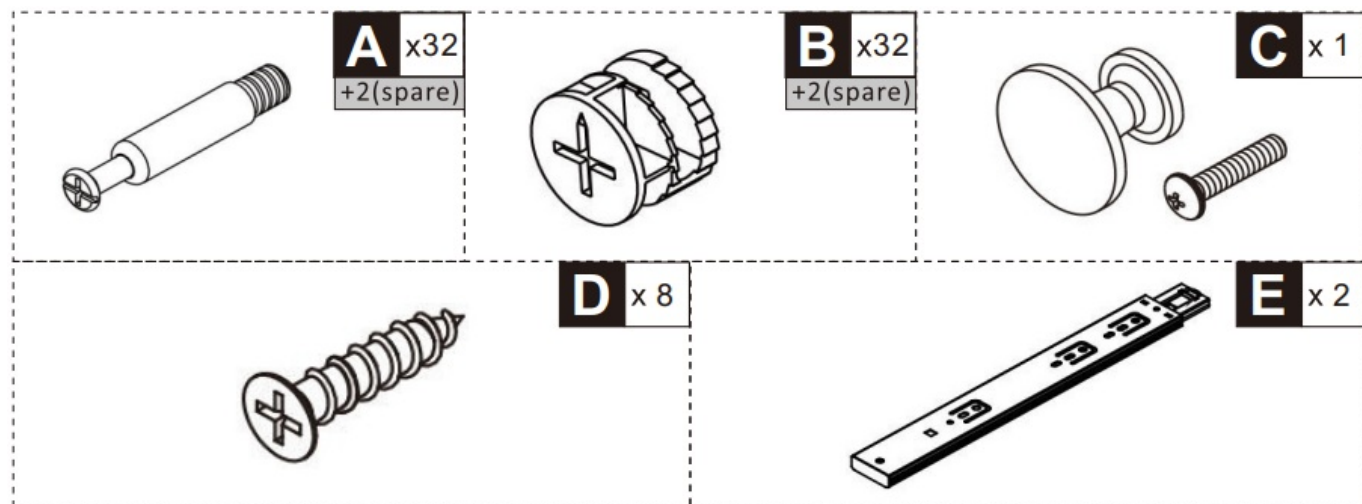


⑥ x 1





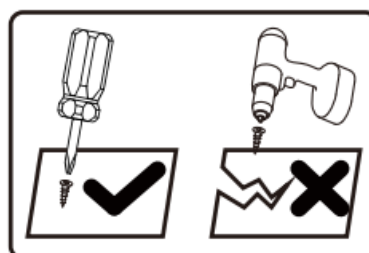
HARDWARE



12
STEPS


60MIN

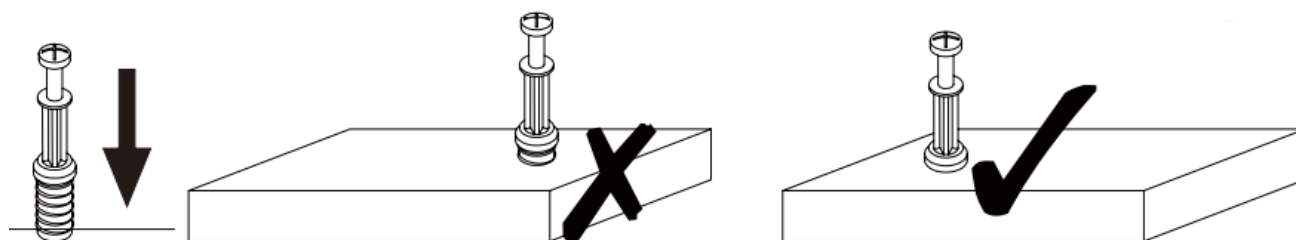




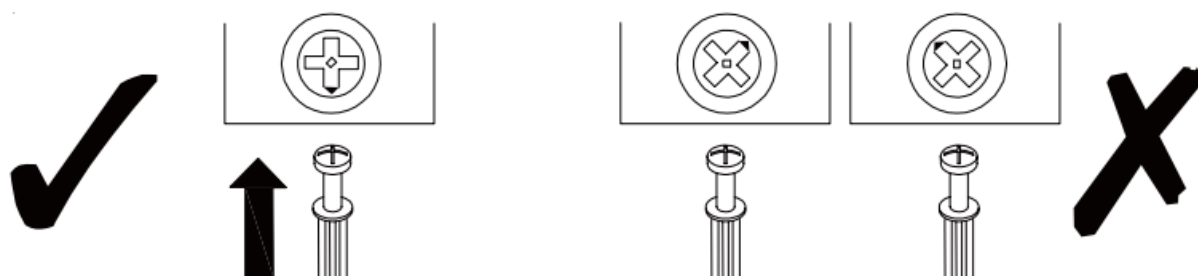
Tools Recommended

USING CAM LOCK AND QUICKFIT

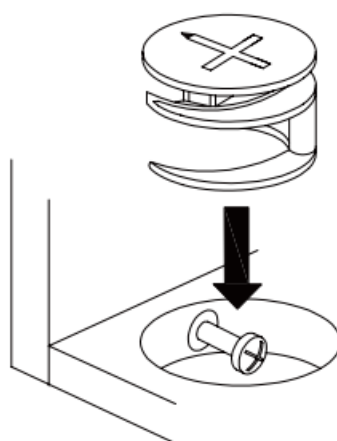
- **QUICK FIT:** Tighten quickfit until shoulder is flush with panel. Do not overtighten or undertighten.



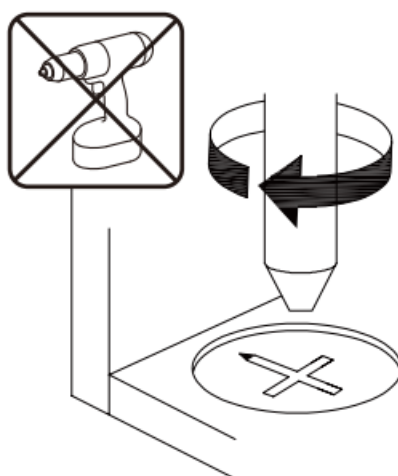
- **CAM LOCK:** When fitting cam lock, ensure starting position is correct before you insert connecting quickfit.



- Quickfit head should be in the centre of the cam lock when the two panels are joined. Cam lock should be inserted before quickfit.



- Turn cam lock clockwise to tighten.

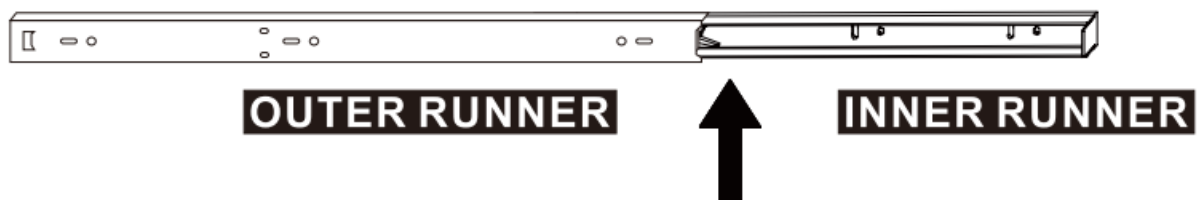


PRE-FIX DRAWER RUNNER INSTRUCTIONS

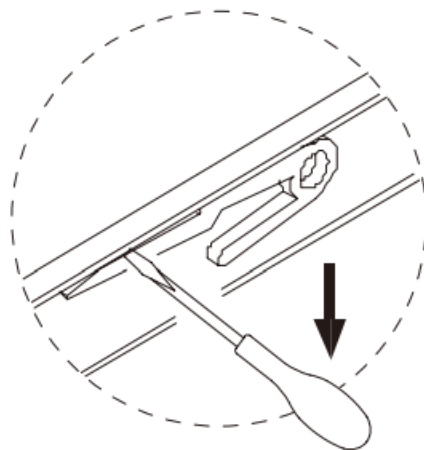
NOTE: Pull inner and outer drawer runners apart before fixing them to panels.



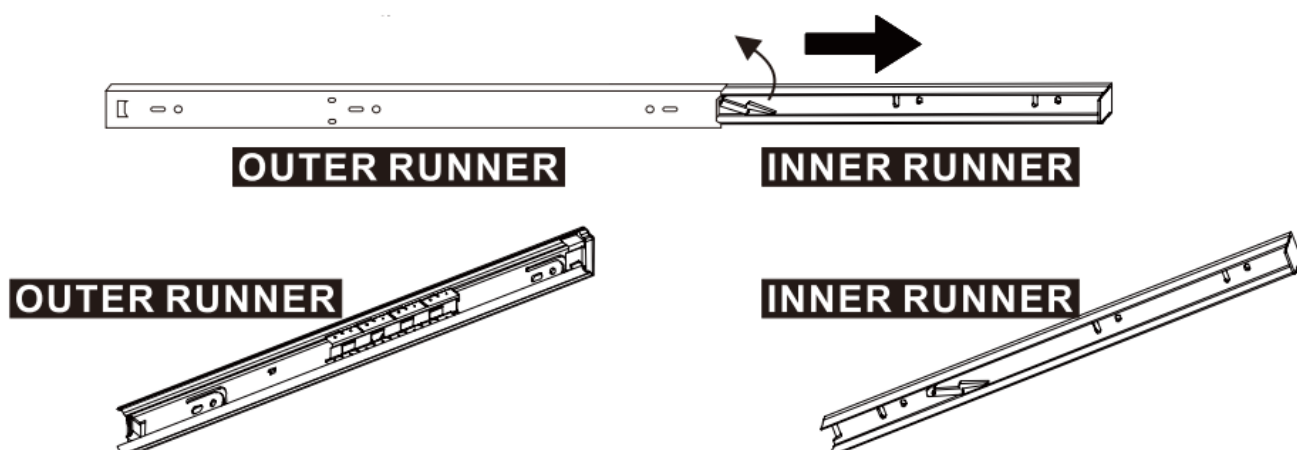
Slide drawer runners apart until the drawer lock can be seen, as shown.



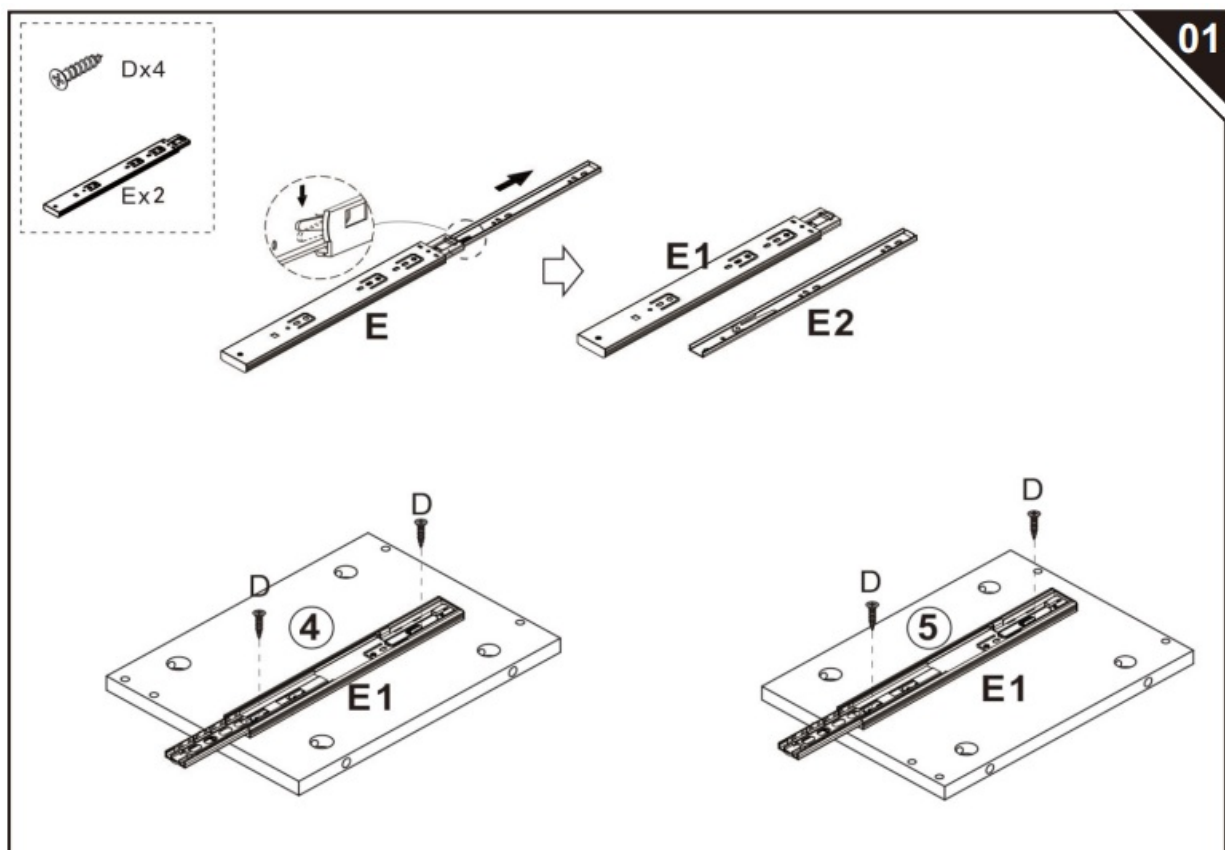
Press and hold the drawer runner lock and then continue to slide drawer runners apart, as shown.



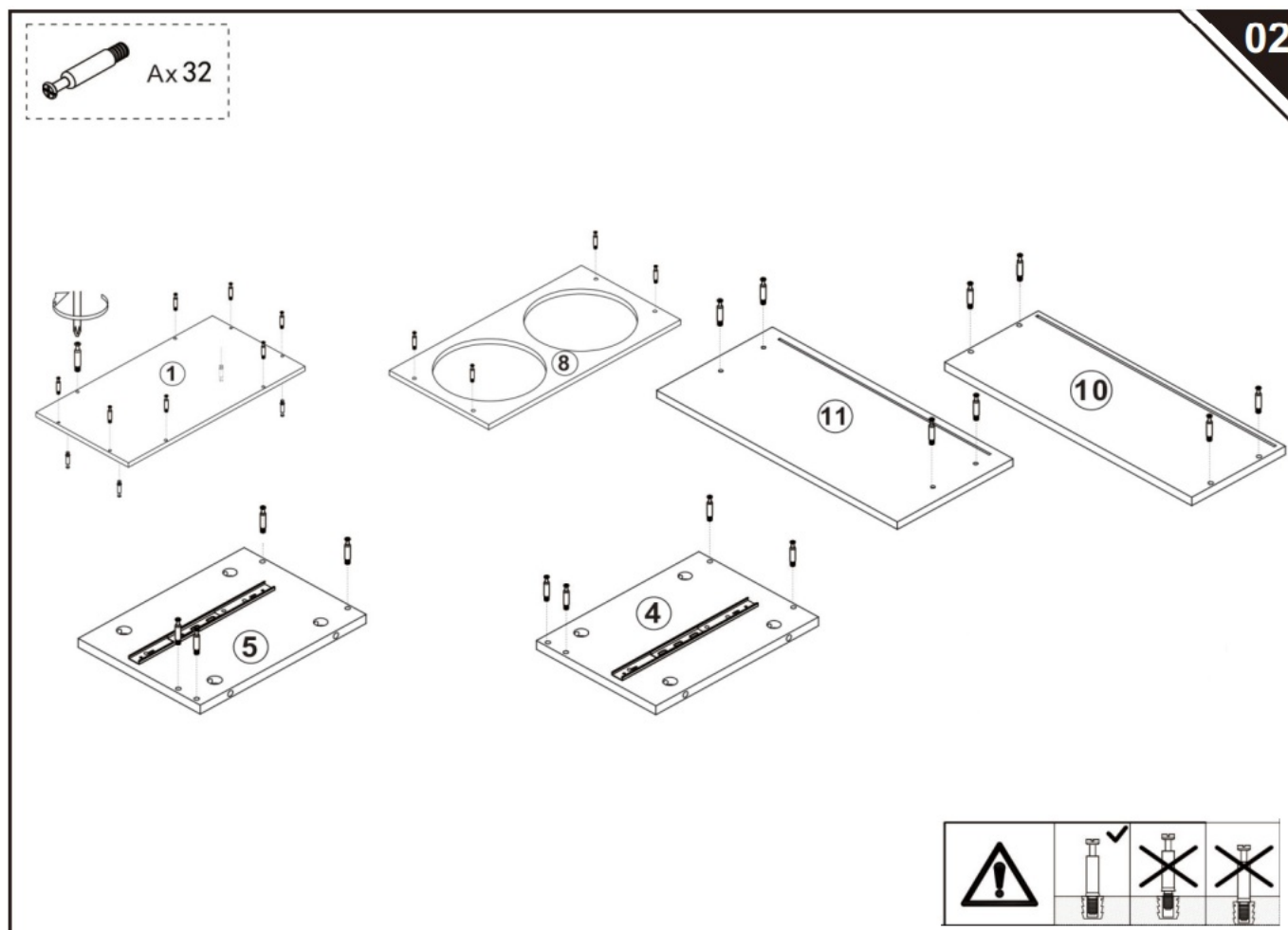
Your inner and outer drawer runners are ready to be fixed to panels.



INSTALLATION INSTRUCTION

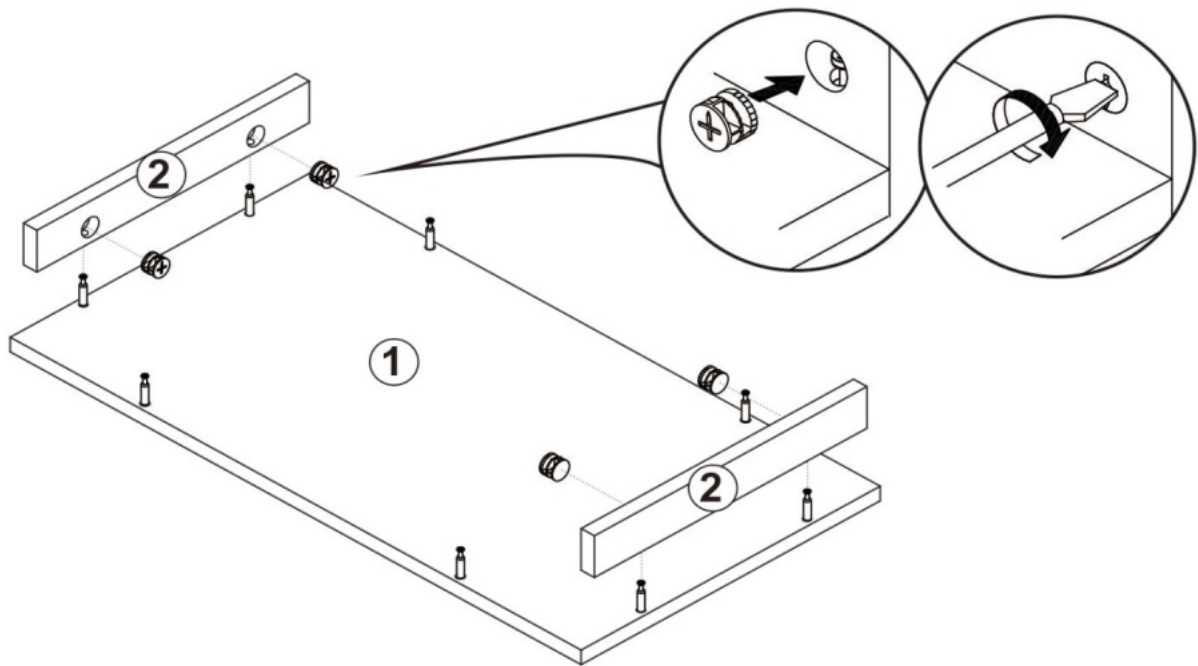


Please find the exact hole for installation, otherwise it will be misaligned. The screws on the drawer slide must be leveled, otherwise it will affect the smoothness of the drawer.

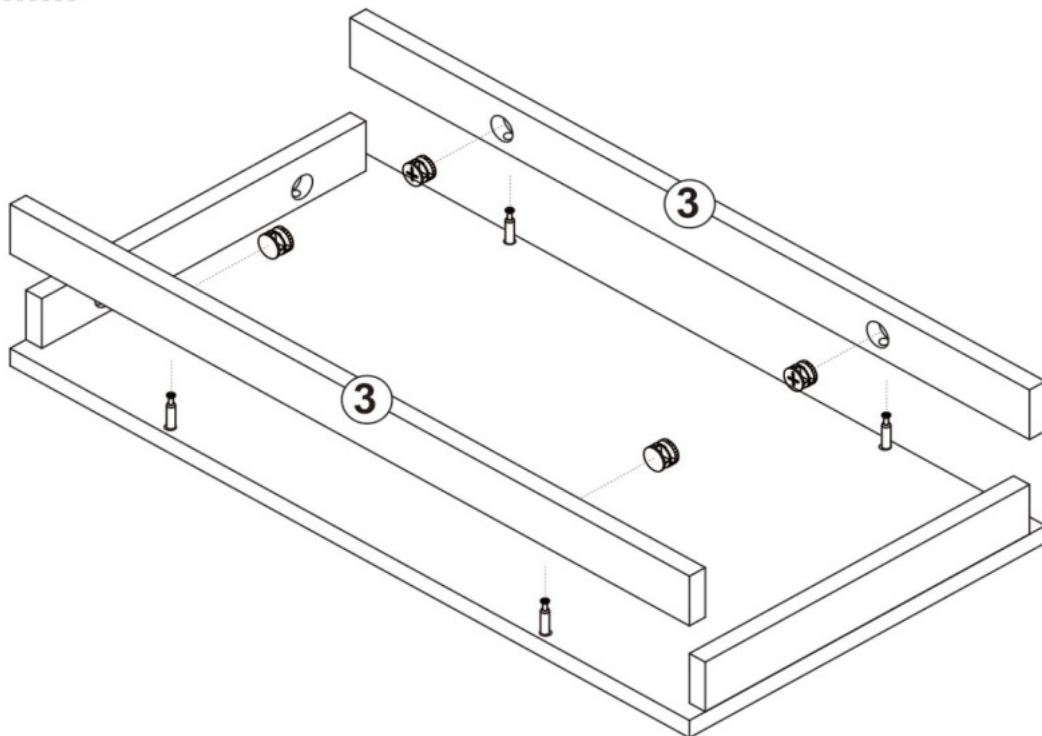




Bx4

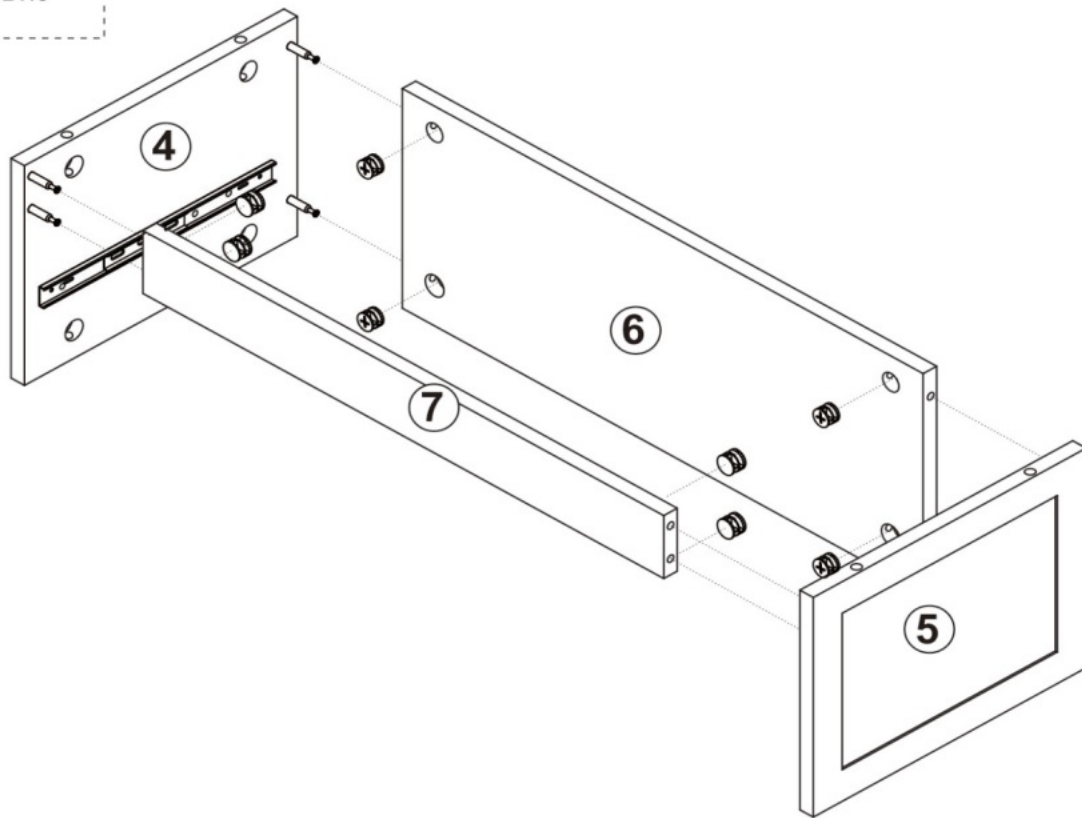


Bx4

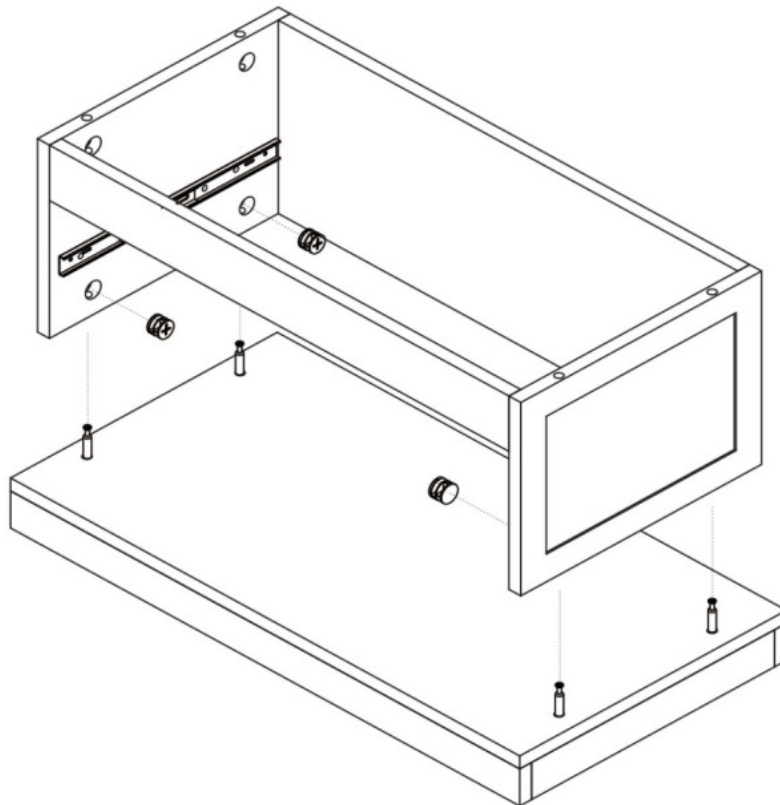




Bx8

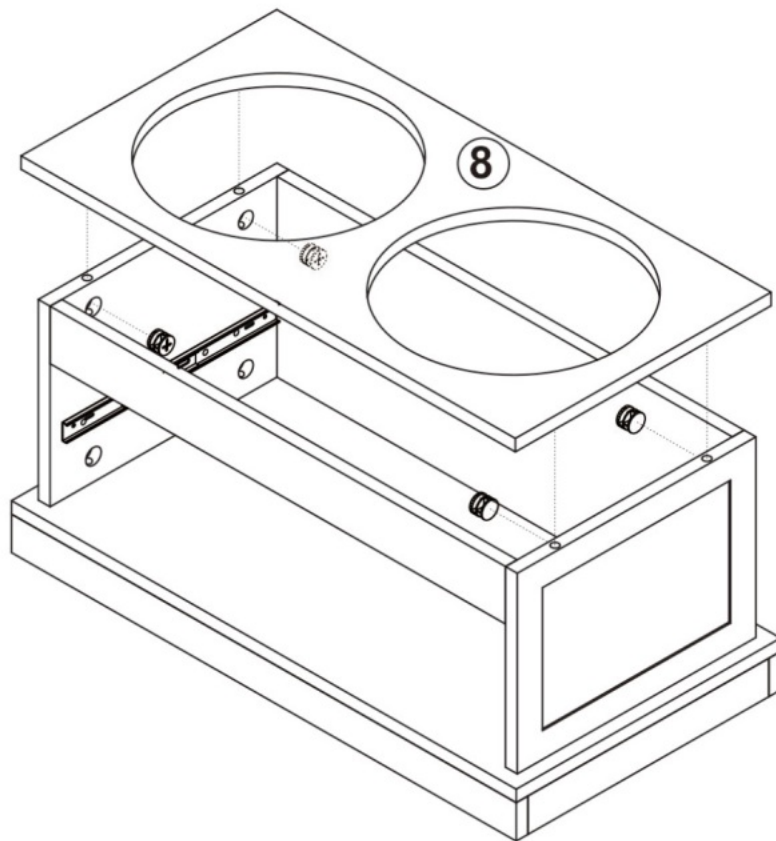


Bx4

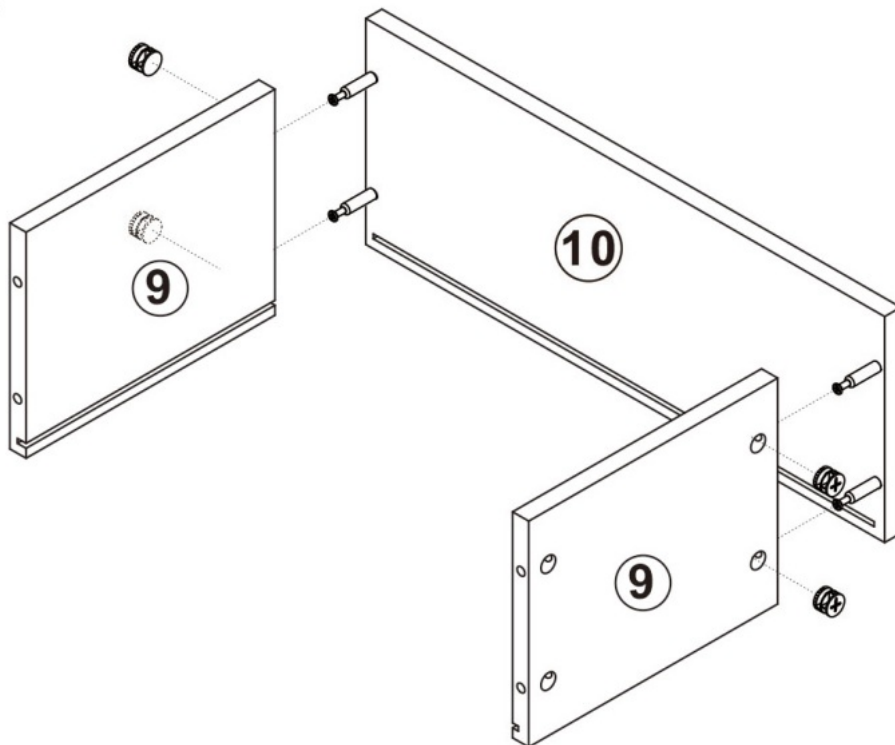


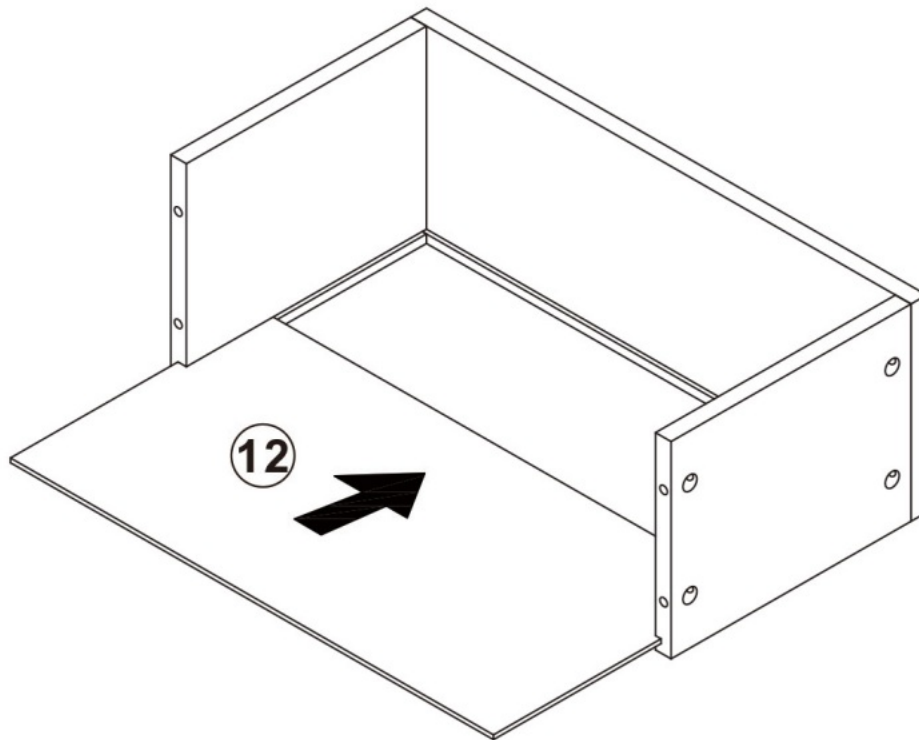


Bx4

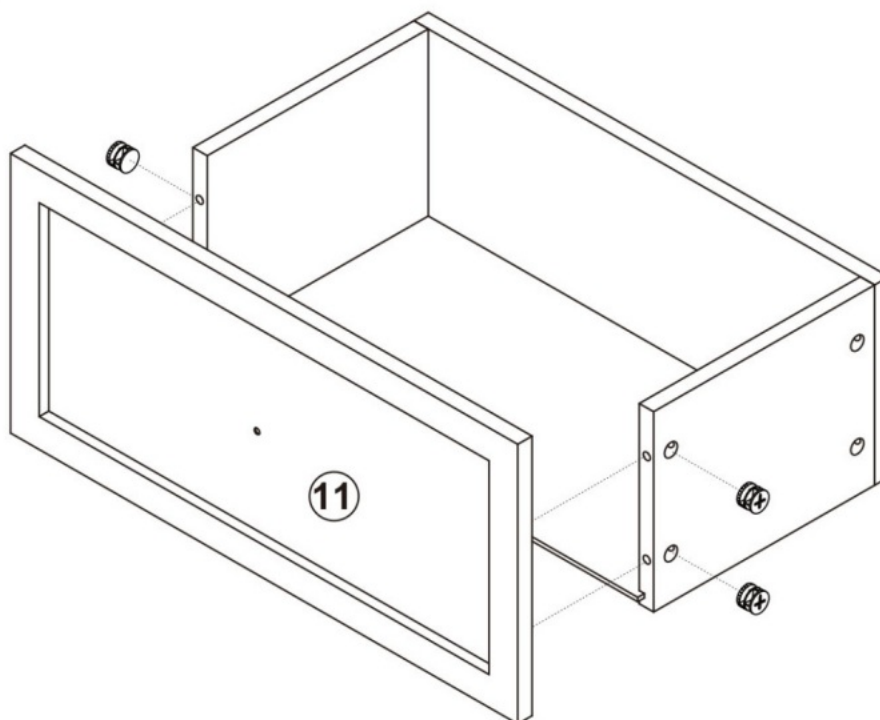


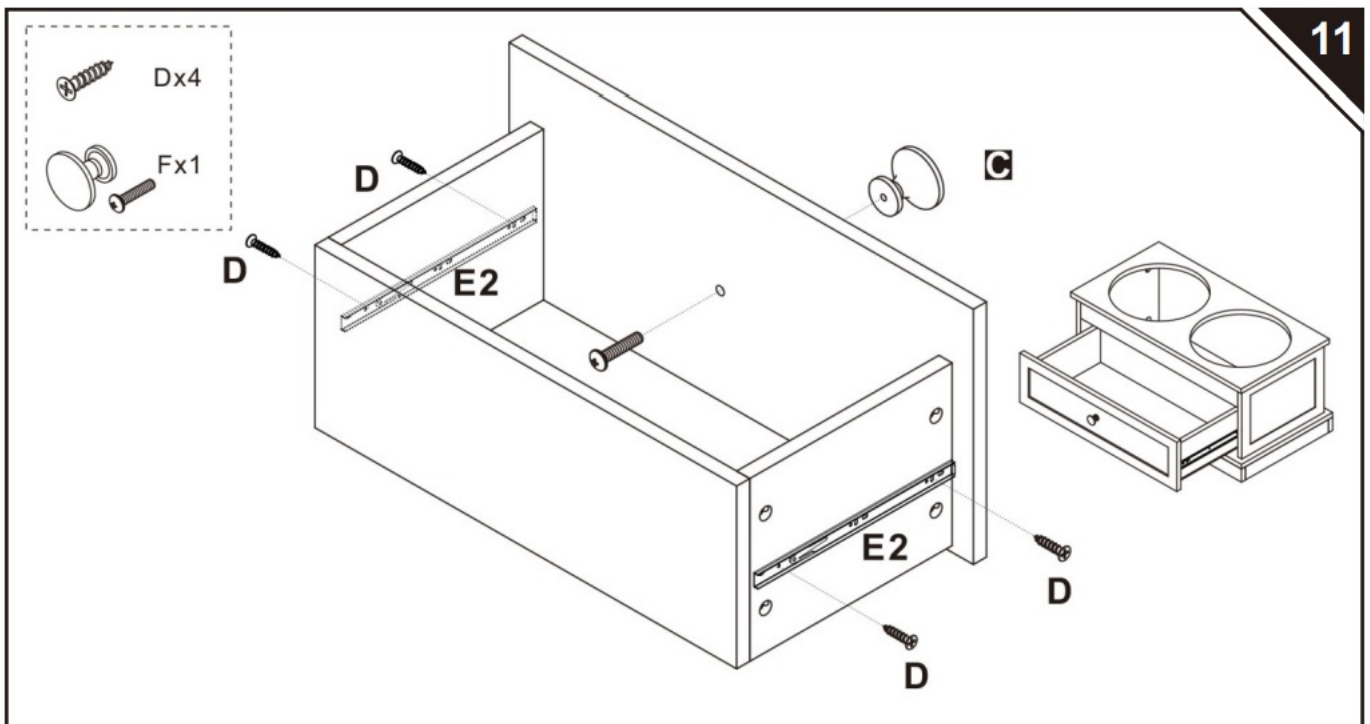
Bx4



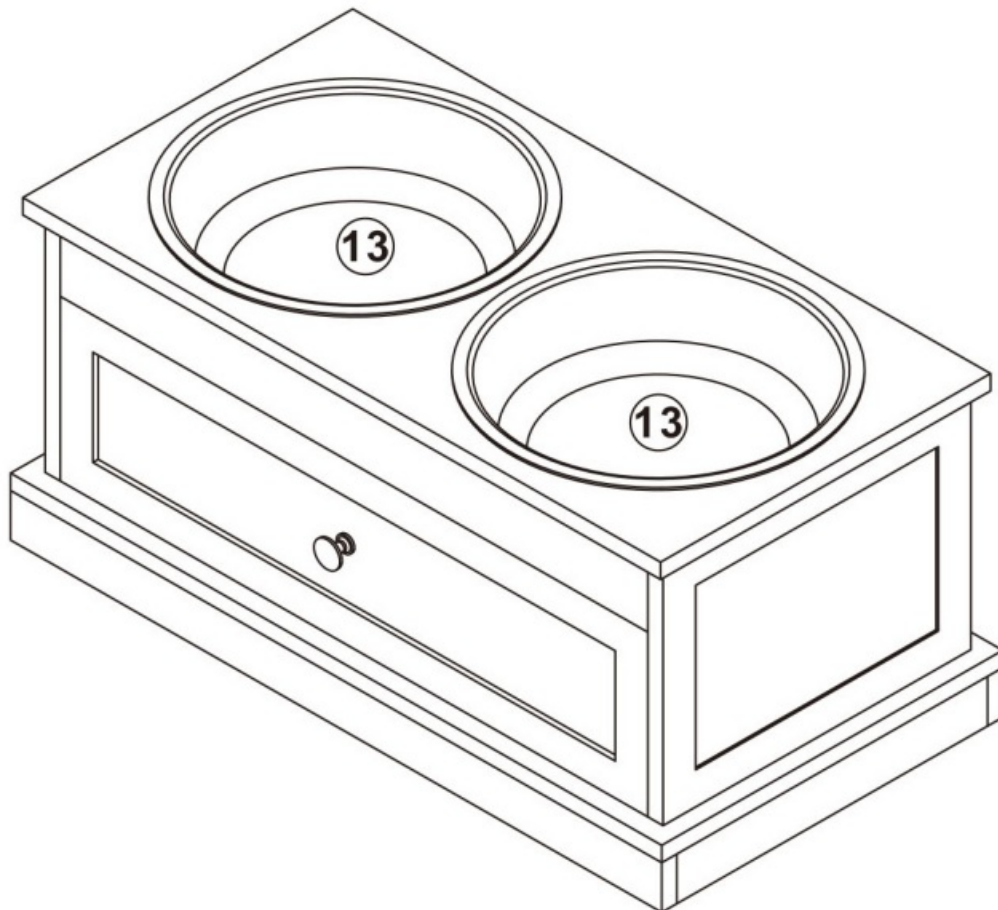


Bx4





Be careful to push in the board when the both sides slide way been aligned.



US

If you have any questions, please contact our customer care center, Our contact details are below:

001-[877-644-9366](tel:877-644-9366)

customerservice@aosom.com

Imported by Aosom LLC

27150 SW Kinsman Rd Wilsonville, OR 97070 USA

MADE IN CHINA

UK

If you have any questions, please contact our customer care center, Our contact details are below:

0044-[800-240-4004](tel:800-240-4004)

enquiries@mhstar.co.uk

IMPORTER ADDRESS:

MH STAR UK LTD


Unit 27, Perivale Park,

Horsenden lane South

Perivale, UB6 7RH

MADE IN CHINA

Documents / Resources

| | |
|---|---|
|  | <p>PawHut D08-039V00 Elevated Feeder [pdf] Installation Guide D08-039V00 Elevated Feeder, D08-039V00, Elevated Feeder, Feeder</p> |
|---|---|

References

- [User Manual](#)

Manuals±, Privacy Policy

This website is an independent publication and is neither affiliated with nor endorsed by any of the trademark owners. The "Bluetooth®" word mark and logos are registered trademarks owned by Bluetooth SIG, Inc. The "Wi-Fi®" word mark and logos are registered trademarks owned by the Wi-Fi Alliance. Any use of these marks on this website does not imply any affiliation with or endorsement.