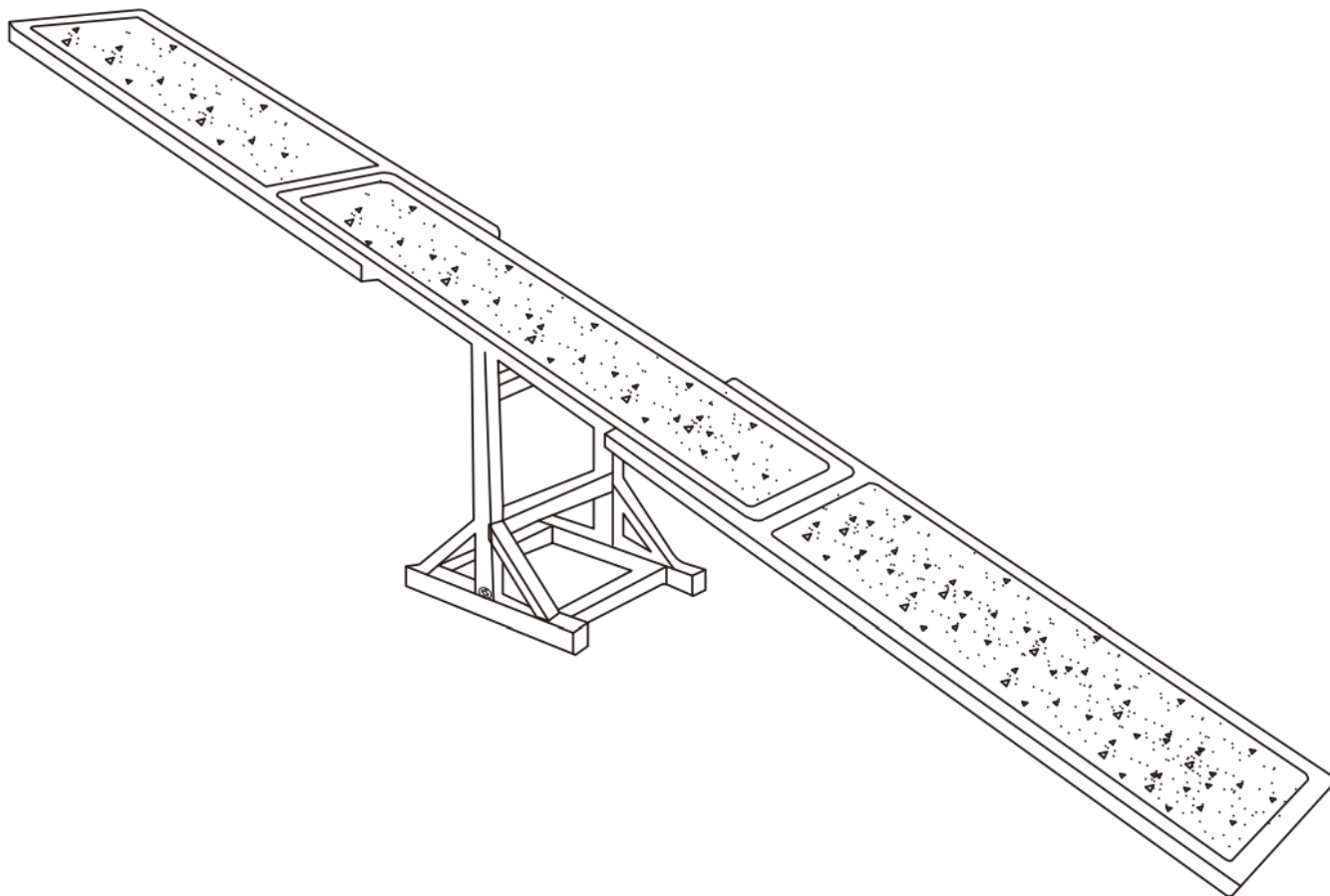


PawHut D03-001V00 Large Rabbit Hutch with Run Instruction Manual

[Home](#) » [PawHut](#) » PawHut D03-001V00 Large Rabbit Hutch with Run Instruction Manual 

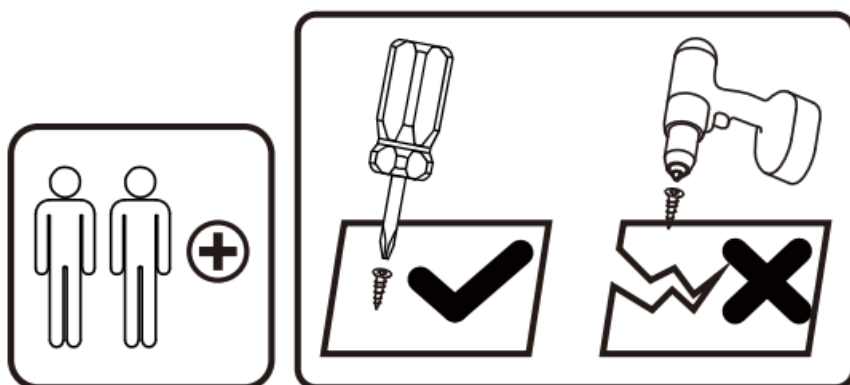
PawHut D03-001V00 Large Rabbit Hutch with Run



Contents

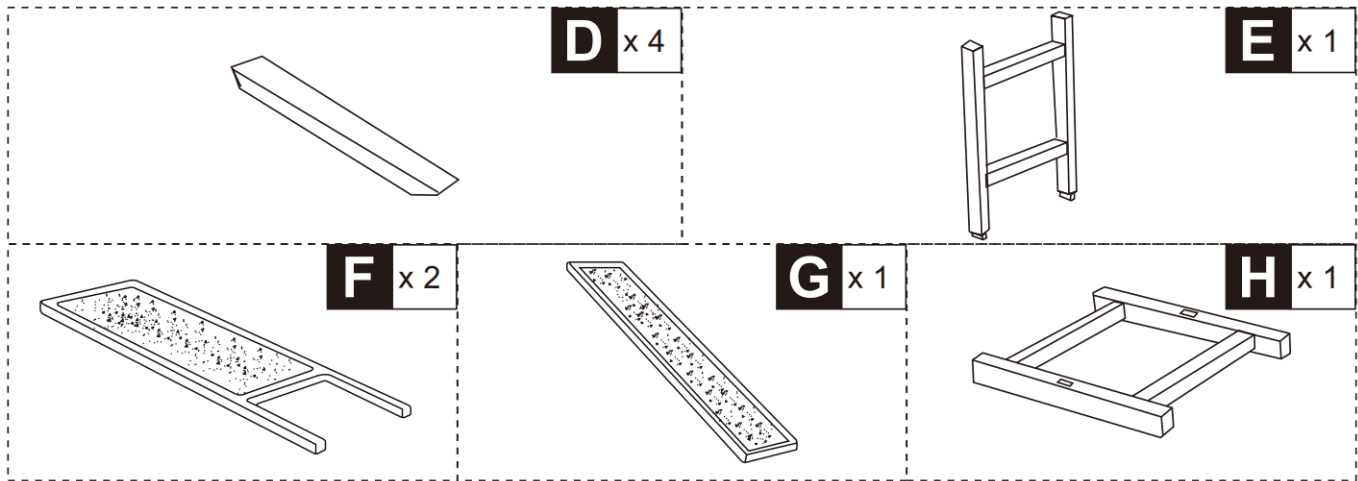
- [1 Tools Recommended](#)
- [2 PARTS](#)
- [3 HARDWARE](#)
- [4 NOTE](#)
- [5 Assembly Instruction](#)
- [6 CUSTOMER SUPPORT](#)
- [7 Documents / Resources](#)
 - [7.1 References](#)
- [8 Related Posts](#)

Tools Recommended

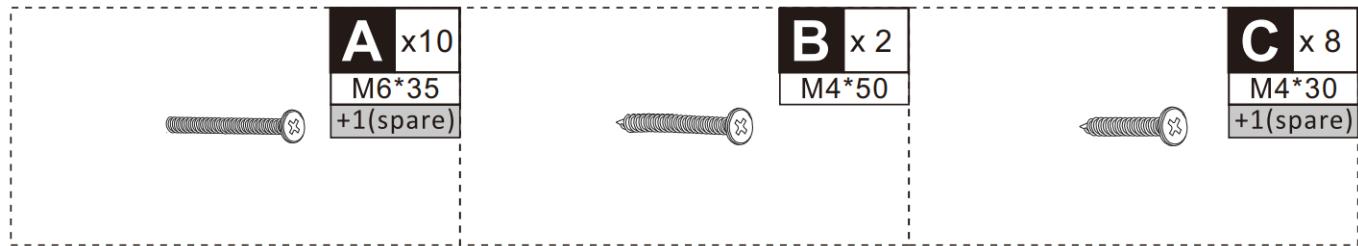


IMPORTANT, RETAIN FOR FUTURE REFERENCE: READ CAREFULLY.

PARTS



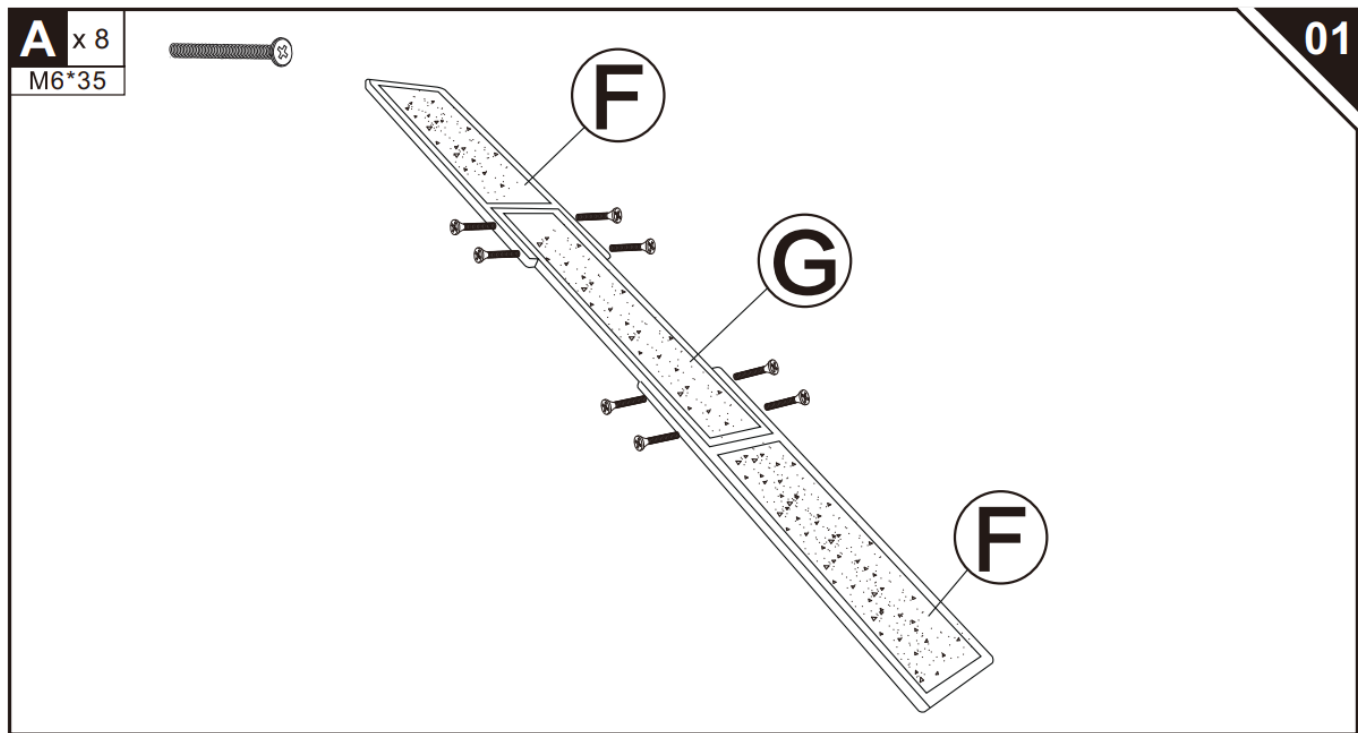
HARDWARE



NOTE

Do not confuse similar screws.

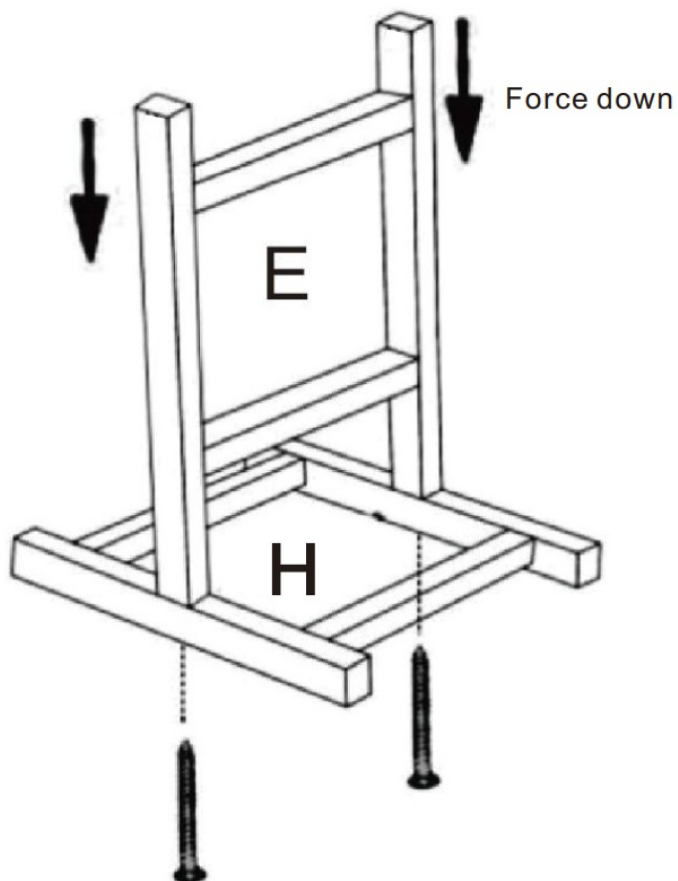
Assembly Instruction



B x 2
M4*50



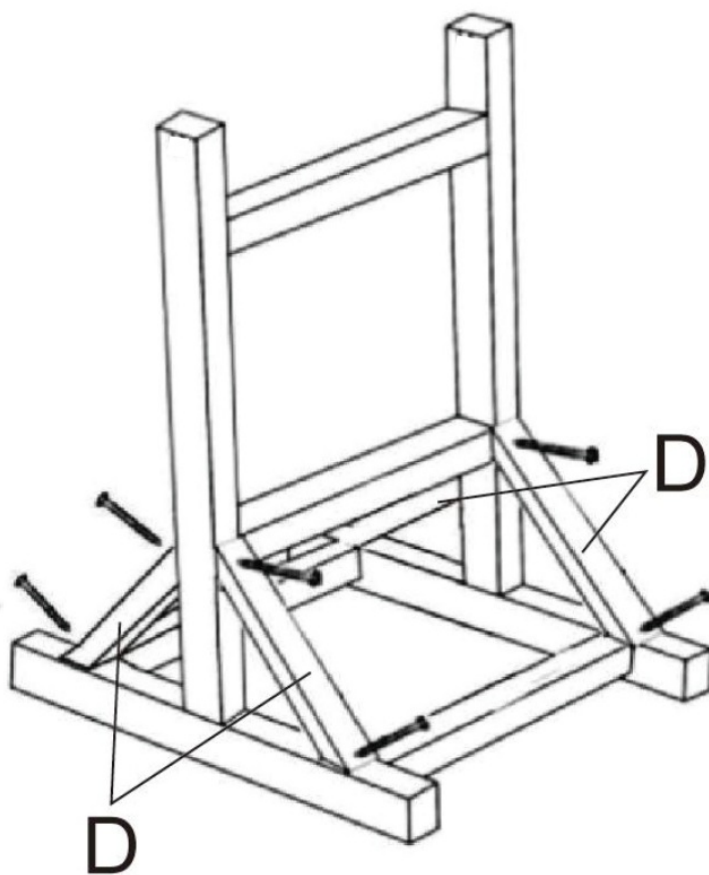
02



C x 8
M4*30

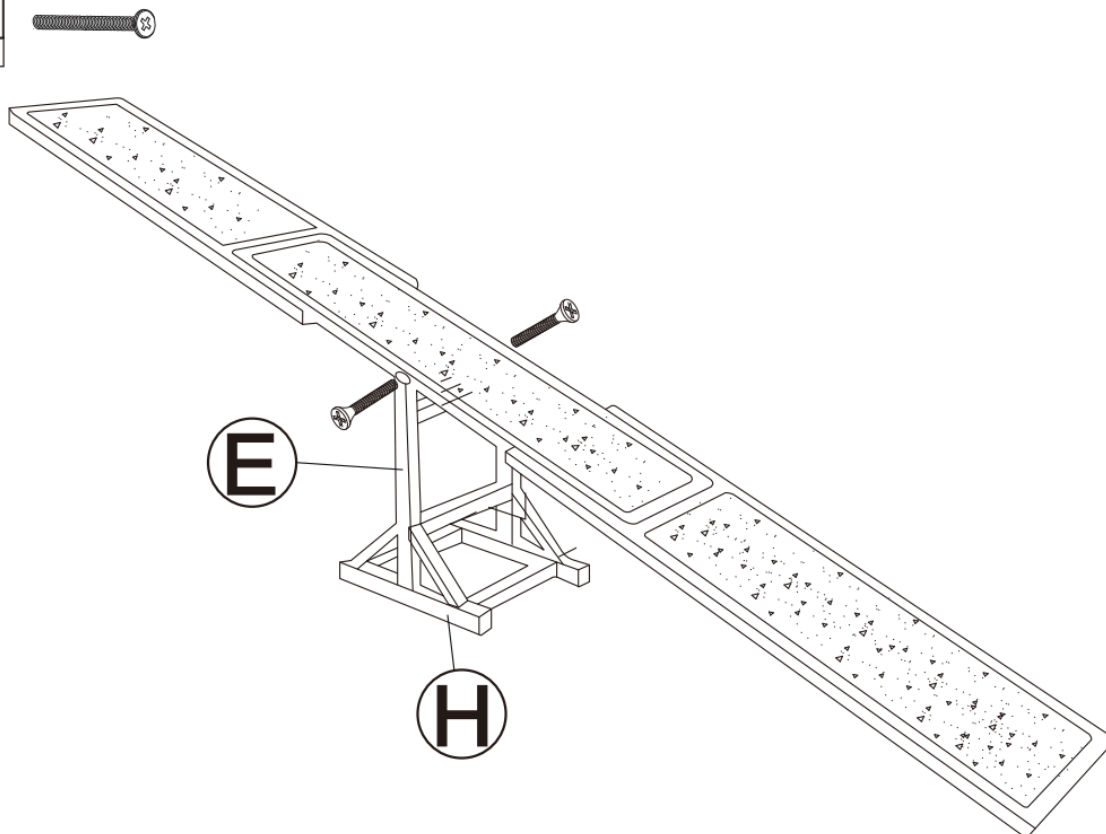


03

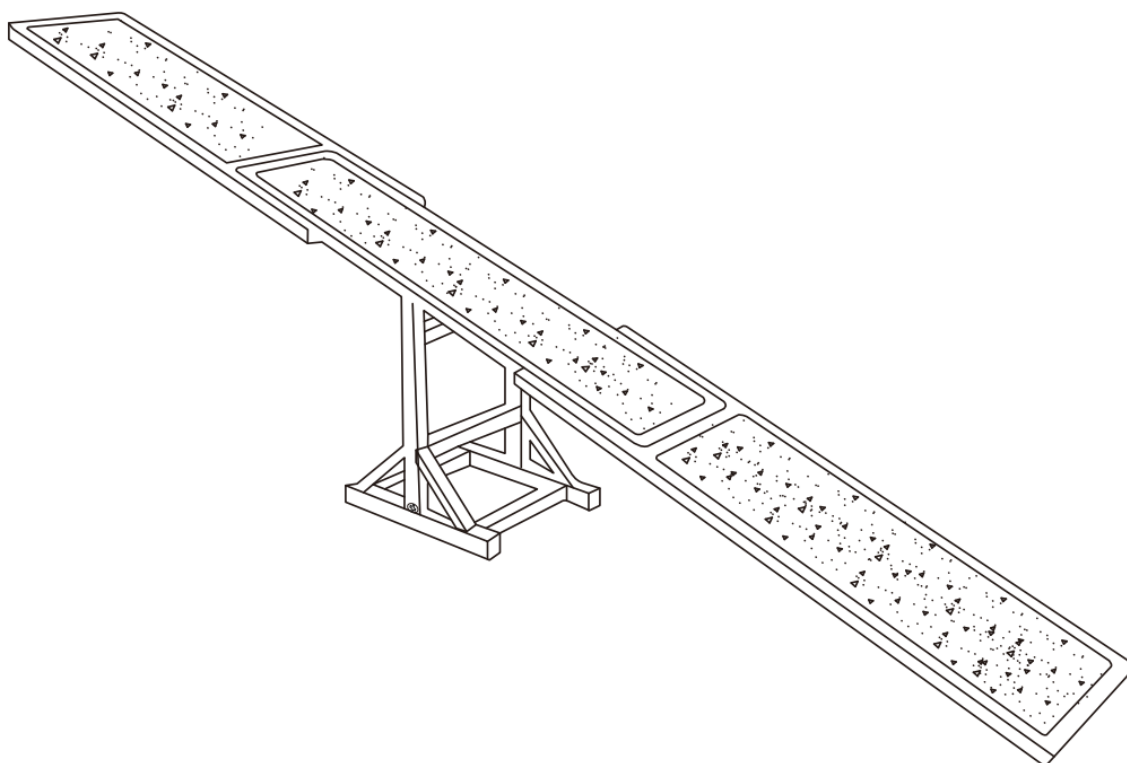


A x 2
M6*35

04



Done



If you have any questions, please contact our customer care center.

Our contact details are below:



001-[877-644-9366](tel:877-644-9366)



customerservice@aosom.com

Imported by Aosom LLC
27150 SW Kinsman Rd Wilsonville OR 97070 USA

MADE IN CHINA



FR

**DONNEZ
OU
RECYCLEZ**



OU

ASSOCIATION



OU

LIVRAISON



DÉCHÈTERIE

Adresses sur quefairedemesdechets.fr



Documents / Resources



[PawHut D03-001V00 Large Rabbit Hutch with Run](#) [pdf] Instruction Manual
D03-001V00 Large Rabbit Hutch with Run, D03-001V00, Large Rabbit Hutch with Run, Rabbit Hutch with Run, Hutch with Run, Run

References

- [User Manual](#)

Manuals+. Privacy Policy

This website is an independent publication and is neither affiliated with nor endorsed by any of the trademark owners. The "Bluetooth®" word mark and logos are registered trademarks owned by Bluetooth SIG, Inc. The "Wi-Fi®" word mark and logos are registered trademarks owned by the Wi-Fi Alliance. Any use of these marks on this website does not imply any affiliation with or endorsement.