

Paulmann 986.13 Inline LED Lamp and Luminaires



Paulmann 986.13 Inline LED Lamp and Luminaires Instruction Manual

[Home](#) » [Paulmann](#) » Paulmann 986.13 Inline LED Lamp and Luminaires Instruction Manual 

Contents

- [1 Paulmann 986.13 Inline LED Lamp and Luminaires](#)
- [2 Safety Instructions](#)
- [3 Documents / Resources](#)
 - [3.1 References](#)



Paulmann

Paulmann 986.13 Inline LED Lamp and Luminaires



Specifications

- Product Codes: 986.13, 986.15, 986.21, 986.23

Dimensions

- 986.13/986.15: 35cm
- 986.21/986.23: 55cm

Quantity

- 986.13/986.15: 2x
- 986.21/986.23: 4x
- Color Temperature: 3000K – 6500K

Safety Instructions

Before using the product, please ensure that you have read and understood the safety instructions provided in the manual.

Installation

1. Identify the parts using the product codes mentioned.
2. Assemble the components following the provided diagrams.
3. For extensions, refer to the E Extension instructions.

Safety Instructions

1 , 2,3,4, 7 , 8 , 1 1 , 1 2 , 1 3 , 1 4 ,16,17 , 1 8 , 1 9 , 2 0 , 3 3 ,34 .

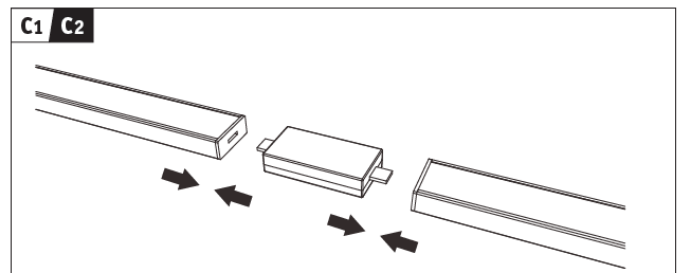
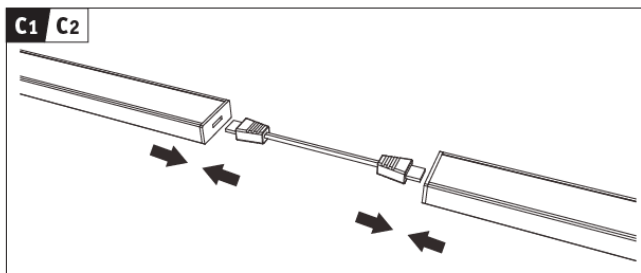
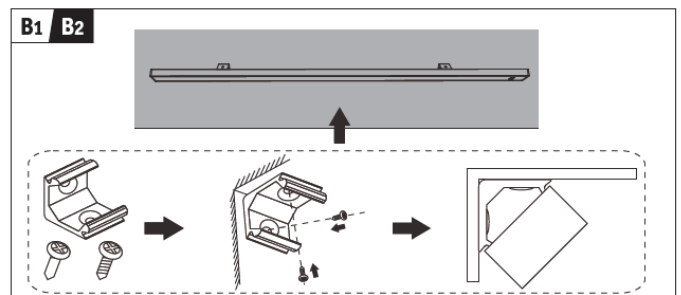
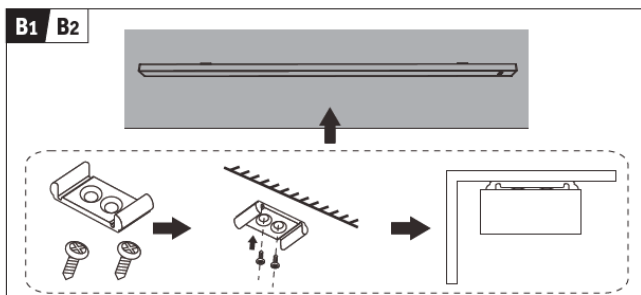
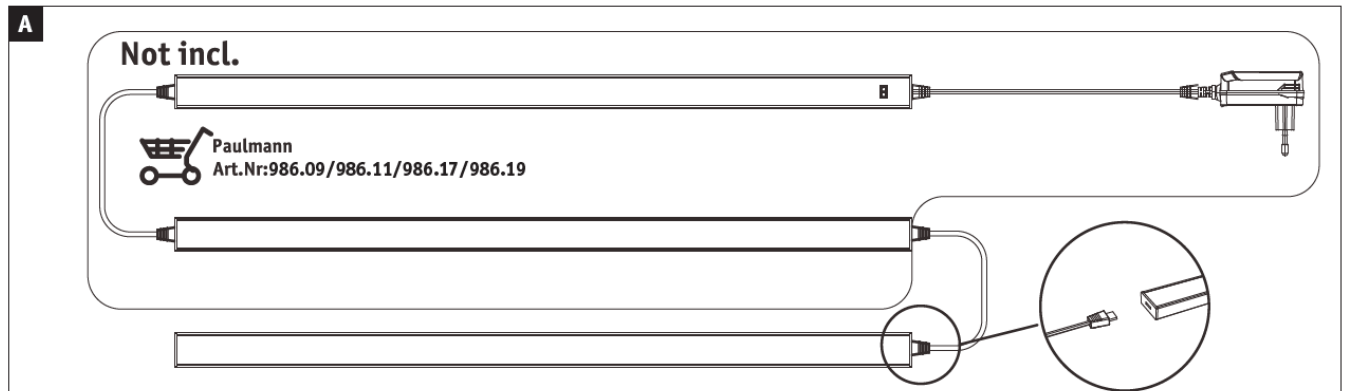


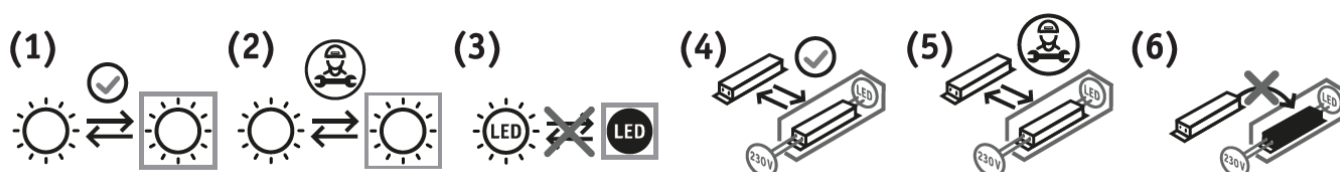
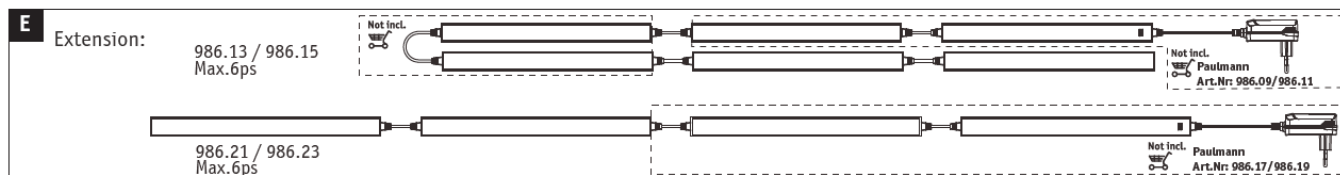
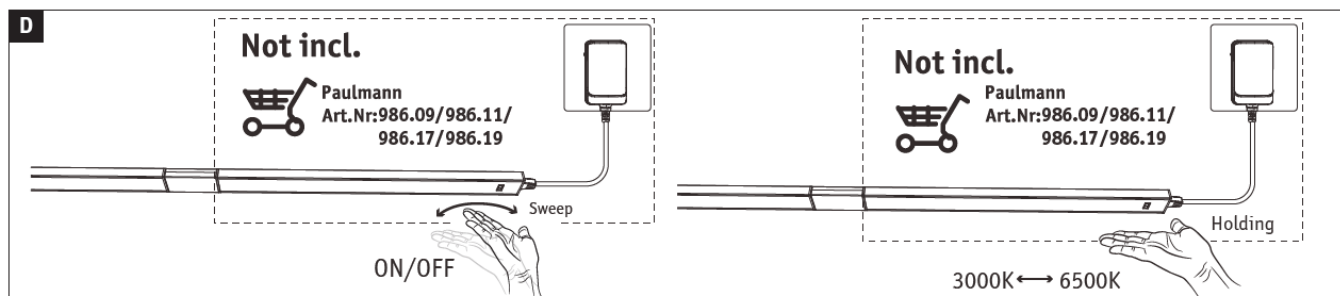
www.paulmann.com/symbols

Paulmann Licht GmbH Quezinger Feld 2 31832 Springe Germany

www.paulmann.com

<p>Art.-Nr.: 986.13 986.15 986.21 986.23</p> <p>(+MA326) PE0 10/23</p> <p>CE UK CA</p>	<p> 986.13/986.15</p> <p>35cm</p> <p>2x 2x</p> <p>4x 4x 16x</p> <p>2x</p>	<p>986.21/986.23</p> <p>55cm</p> <p>2x 2x</p> <p>4x 4x 16x</p> <p>2x</p>	<p></p> <p></p>
--	---	--	-----------------





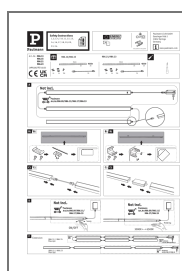
www.paulmann.com/symbols

This product contains a light source with energy efficiency class <see above>. Replaceability: (1) Light source or (4) operating device can be replaced by end users without permanent damage to the luminaire. (2) Light source or (5) operating device can be replaced by a qualified electrician without permanently damaging the luminaire. (3) Light source or (6) operating device is not replaceable, the luminaire must be replaced.



This product contains a light source with energy efficiency class <see above>.

Documents / Resources



[Paulmann 986.13 Inline LED Lamp and Luminaires](#) [pdf] Instruction Manual
986.13 Inline LED Lamp and Luminaires, 986.13, Inline LED Lamp and Luminaires, LED Lamp and Luminaires, Lamp and Luminaires

References

- [**P** Paulmann – Lamps & Luminaires from the Manufacturer](#)
- [**P** Q & A: Icons on Paulmann Products](#)
- [**U**ser Manual](#)

[Manuals+](#), [Privacy Policy](#)

This website is an independent publication and is neither affiliated with nor endorsed by any of the trademark owners. The "Bluetooth®" word mark and logos are registered trademarks owned by Bluetooth SIG, Inc. The "Wi-Fi®" word mark and logos are registered trademarks owned by the Wi-Fi Alliance. Any use of these marks on this website does not imply any affiliation with or endorsement.