



Paulmann

**Paulmann 95672
High Voltage
Component**



Paulmann 95672 High Voltage Component Instruction Manual

[Home](#) » [Paulmann](#) » Paulmann 95672 High Voltage Component Instruction Manual 

Contents

- [1 Paulmann 95672 High Voltage Component](#)
- [2 Product Information](#)
- [3 Frequently Asked Questions](#)
- [4 WHAT IS IN THE BOX](#)
- [5 TOOLS](#)
- [6 INSTALLATION](#)
- [7 Factory reset](#)
- [8 Add to gateway](#)
- [9 Touchlink pairing](#)
- [10 Info Zigbee](#)
- [11 Documents / Resources](#)
 - [11.1 References](#)



Paulmann

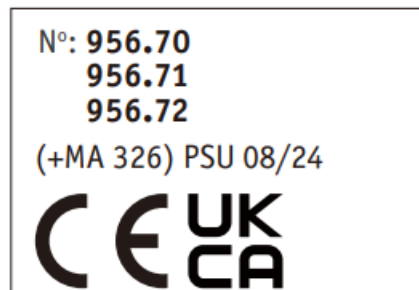
Paulmann 95672 High Voltage Component



Product Information

Specifications

- Model Numbers: 956.70, 956.71, 956.72
- Part Number: PSU 08/24 (+MA 326)
- Input Voltage: 230V~
- Maximum Power: 100W
- Reset Options: Factory reset, Reset with app, Delete from App, Flash On Connection Mode
- Reset Timing: 3 minutes for app reset, 5 seconds for remote reset



Frequently Asked Questions

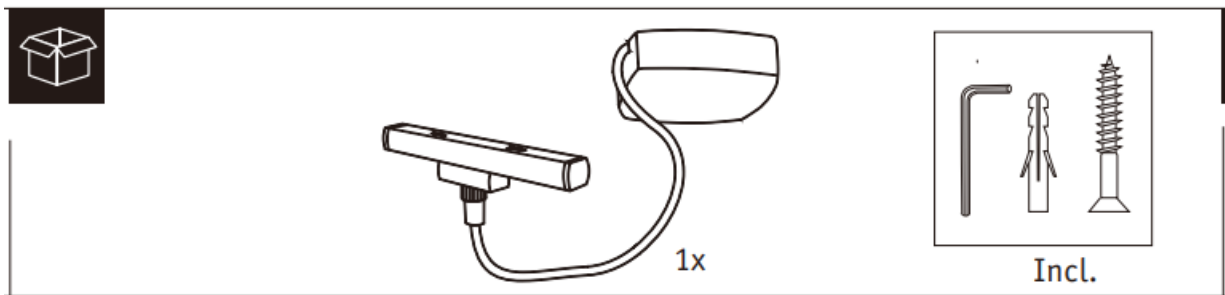
Q: How do I know if the reset was successful?

A: After a successful reset, the device will return to its default settings and indicate completion through visual or audible cues.

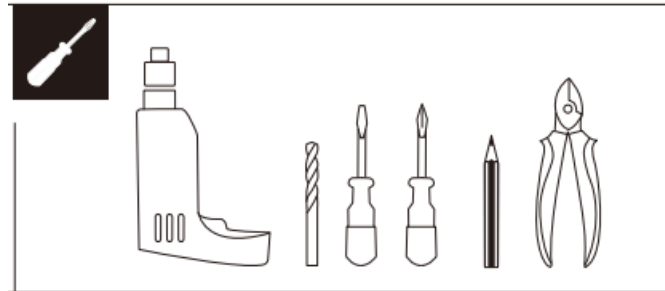
Q: Can I exceed the maximum power limit?

A: It is not recommended to exceed the specified maximum power of 100W to avoid damage to the product.

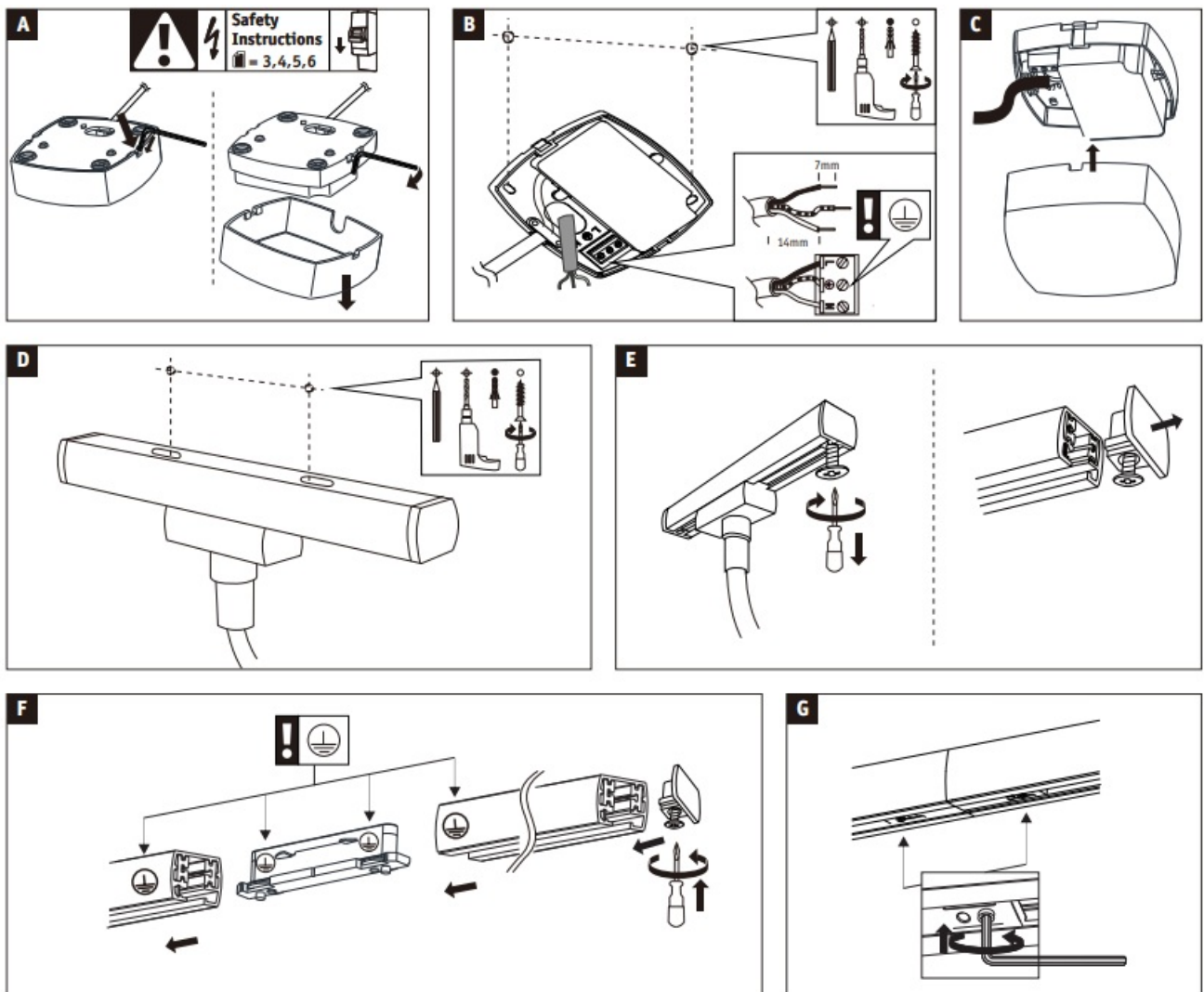
WHAT IS IN THE BOX

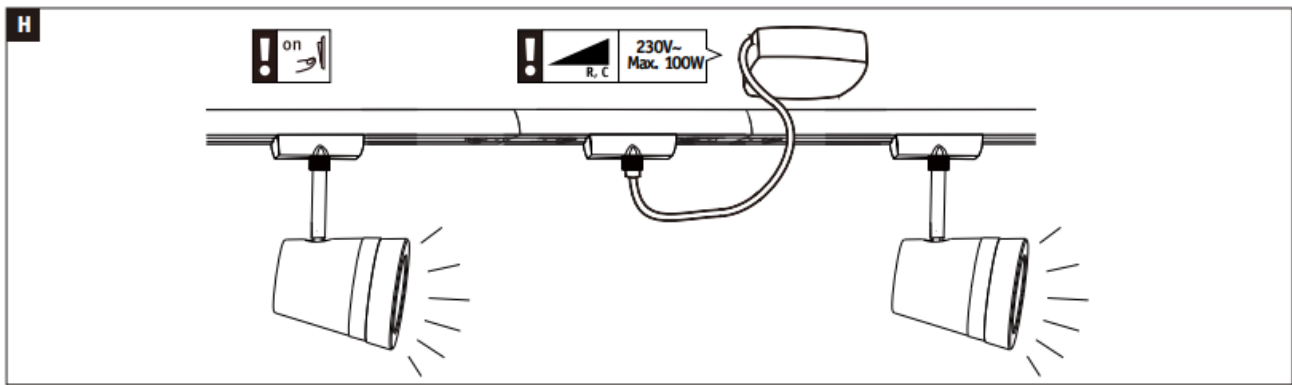


TOOLS



INSTALLATION





Factory reset

I Factory reset

i Reset with app

Delete from App → [App icon] → [Light fixture icon] → Flash → On → Connection Mode ⌚ 3min. ✓

i Reset with switch

5x (off > 5s → on < 2s) → Flash → On → Connection Mode ⌚ 3min. ✓

i Reset with remote

TOUCH LINK → < 30cm → [Remote Control icon] → 1 → < 1s → + → < 1s → 2 → < 1s → ↓ → < 1s → 3 → < 1s → - → Flash → On → Connection Mode ⌚ 3min. ✓

i Remote Control N°: 500.67

Add to gateway

J Add to gateway

1 on or I → Connection Mode ⌚ 3min.

2 App → [App icon] → [Light fixture icon] → Start discovery

If added to gateway not successfully within connection mode, repeat **1**.
Integration with Zigbee 3.0 gateways depends on manufacturer and is not guaranteed by Paulmann.

3 Flash → On → ✓

Add to gateway successfully

Touchlink pairing

K Touchlink pairing

ON → ON > 5s

TOUCH LINK → < 30cm → [Remote Control icon]

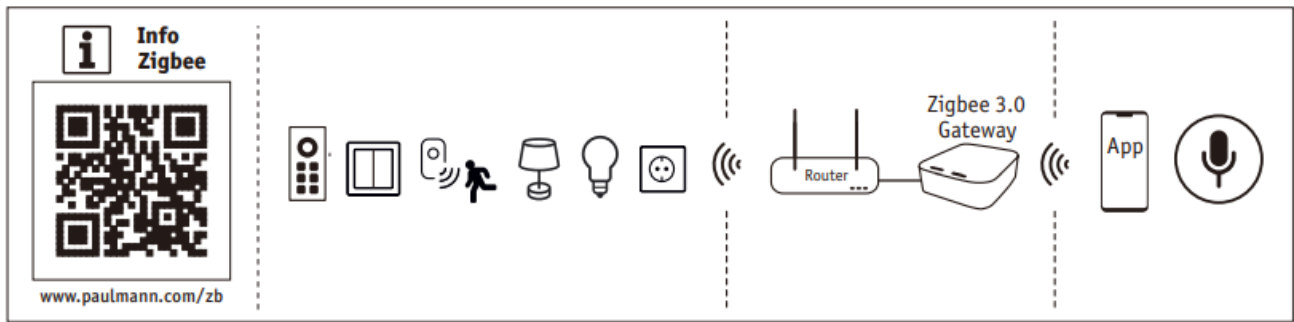
i Remote Control N°: 500.67

1 on or I → Connection Mode ⌚ 3min.

2 Hold > 5s → 1 or 2 or 3

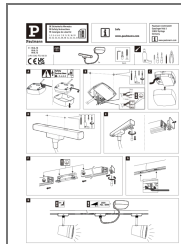
3 2x(Flash → On) → ✓

Info Zigbee



Hereby, Paulmann Licht declares that the radio equipment type [956.70, 956.71, 956.72] is in compliance with Directive 2014/53/EU.

Documents / Resources



[Paulmann 95672 High Voltage Component](#) [pdf] Instruction Manual
95672 High Voltage Component, 95672, High Voltage Component, Voltage Component, Component

References

- [P Paulmann – Lamps & Luminaires from the Manufacturer](#)
- [P Zigbee lighting control: What is it?](#)
- [User Manual](#)

Manuals+, Privacy Policy

This website is an independent publication and is neither affiliated with nor endorsed by any of the trademark owners. The "Bluetooth®" word mark and logos are registered trademarks owned by Bluetooth SIG, Inc. The "Wi-Fi®" word mark and logos are registered trademarks owned by the Wi-Fi Alliance. Any use of these marks on this website does not imply any affiliation with or endorsement.