



Paulmann 930.79 LED Module Recessed Light Instruction Manual

[Home](#) » [Paulmann](#) » Paulmann 930.79 LED Module Recessed Light Instruction Manual 

Contents

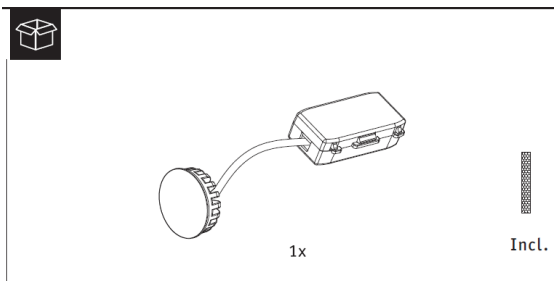
- [1 Paulmann 930.79 LED Module Recessed Light](#)
- [2 UNPACK](#)
- [3 DIMENSION](#)
- [4 INSTRUCTION](#)
- [5 Documents / Resources](#)
- [6 Related Posts](#)



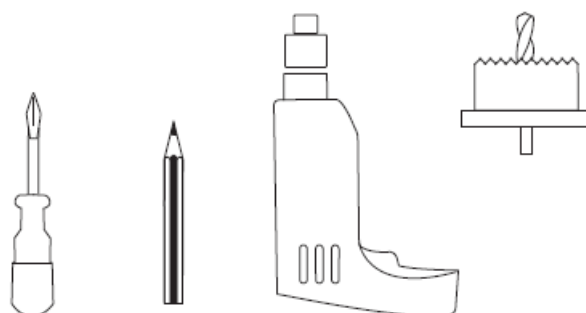
Paulmann 930.79 LED Module Recessed Light



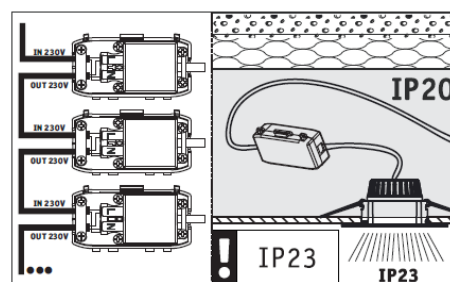
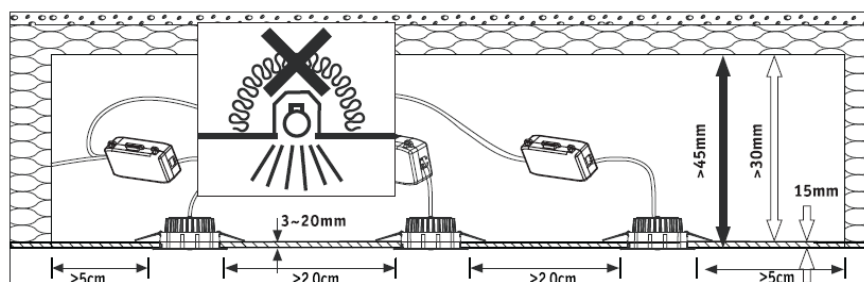
UNPACK



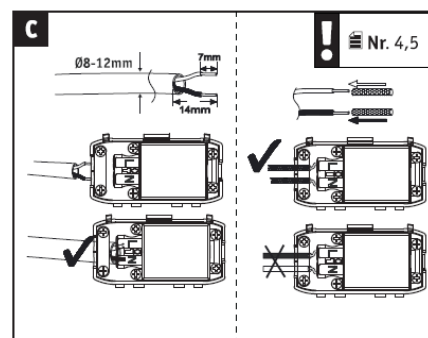
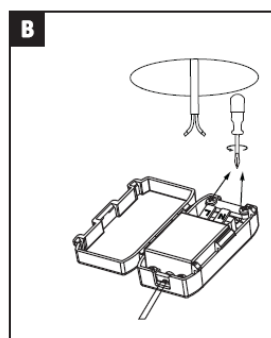
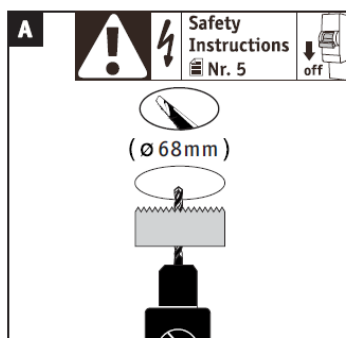
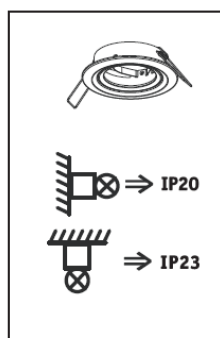
NEED TOOLS

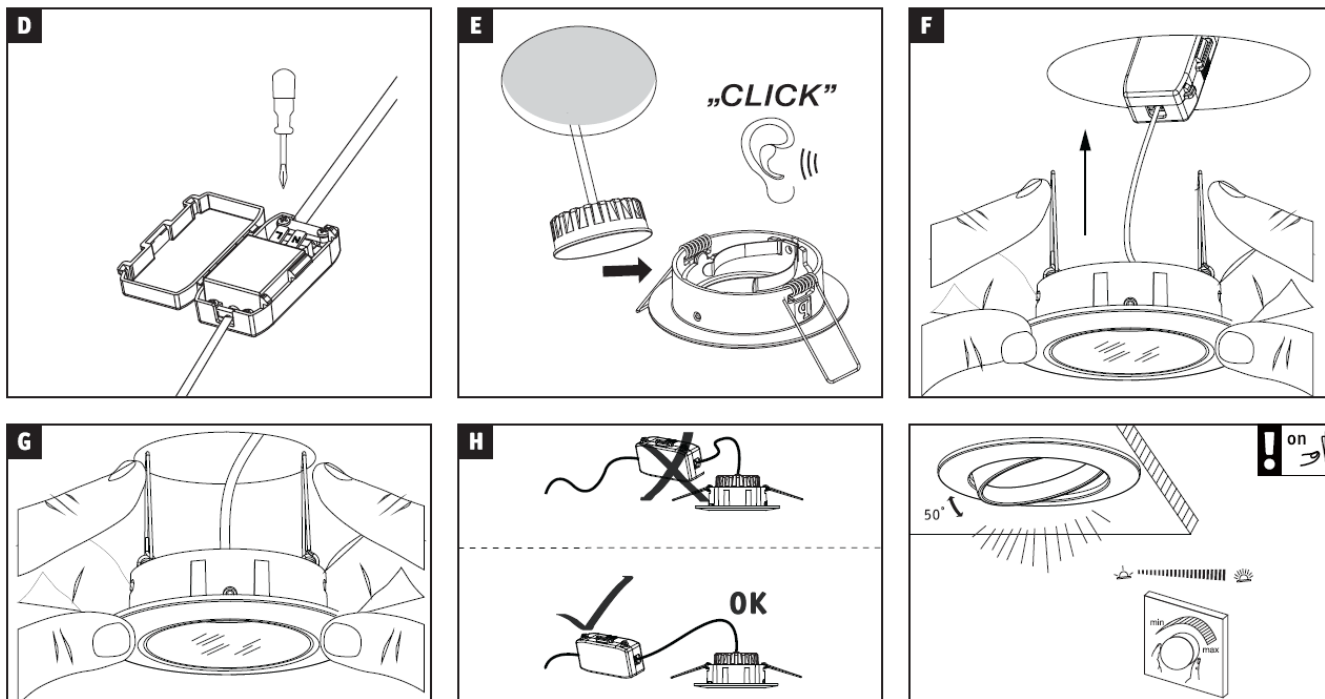


DIMENSION

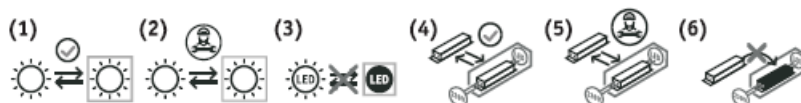


INSTRUCTION





Replaceability: (1) Light source or (4) operating device can be replaced by end users without permanent damage to the luminaire. (2) Light source or (5) operating device can be replaced by a qualified electrician without permanently damaging the luminaire. (3) Light source or (6) operating device is not replaceable, the luminaire must be replaced.



www.paulmann.com/symbols

GB This product contains a light source with energy efficiency class <see above>



Documents / Resources

	<p>Paulmann 930.79 LED Module Recessed Light [pdf] Instruction Manual 930.79, 936.66, 930.79 LED Module Recessed Light, 930.79, LED Module Recessed Light, Recessed Light, Light</p>
--	--