



Paulmann 78875 LED Strip Basic Set Instruction Manual

[Home](#) » [Paulmann](#) » Paulmann 78875 LED Strip Basic Set Instruction Manual 

Contents

- [1 Paulmann 78875 LED Strip Basic Set](#)
- [2 Product Information](#)
- [3 Product Usage Instructions](#)
- [4 WHAT IN THE BOX](#)
- [5 INSTALLATION INSTRUCTION](#)
- [6 Documents / Resources](#)
 - [6.1 References](#)
- [7 Related Posts](#)



Paulmann 78875 LED Strip Basic Set



Product Information

- **Model Number:** PPN 1/21
- **IP Rating:** IP20
- **Dimensions:** 1157mm (length), 492mm (width), 159mm (height)
- **IR Controller:** Included
- **Cable clip:** Self-adhesive

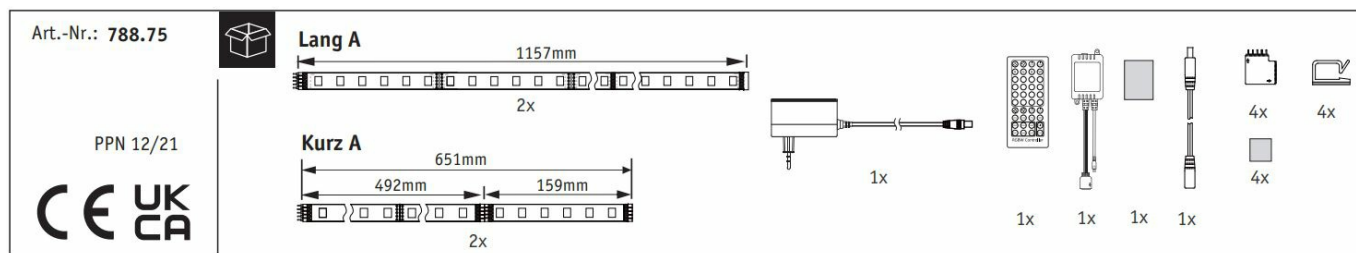
This product is a luminaire that can be used for various lighting applications. It has an IP20 rating, which means it is protected against solid objects larger than 12mm and does not have protection against water. The luminaire comes with an IR controller for convenient operation. The dimensions of the luminaire are 1157mm in length, 492mm in width, and 159mm in height. It also includes a self-adhesive cable clip for easy installation.

Product Usage Instructions

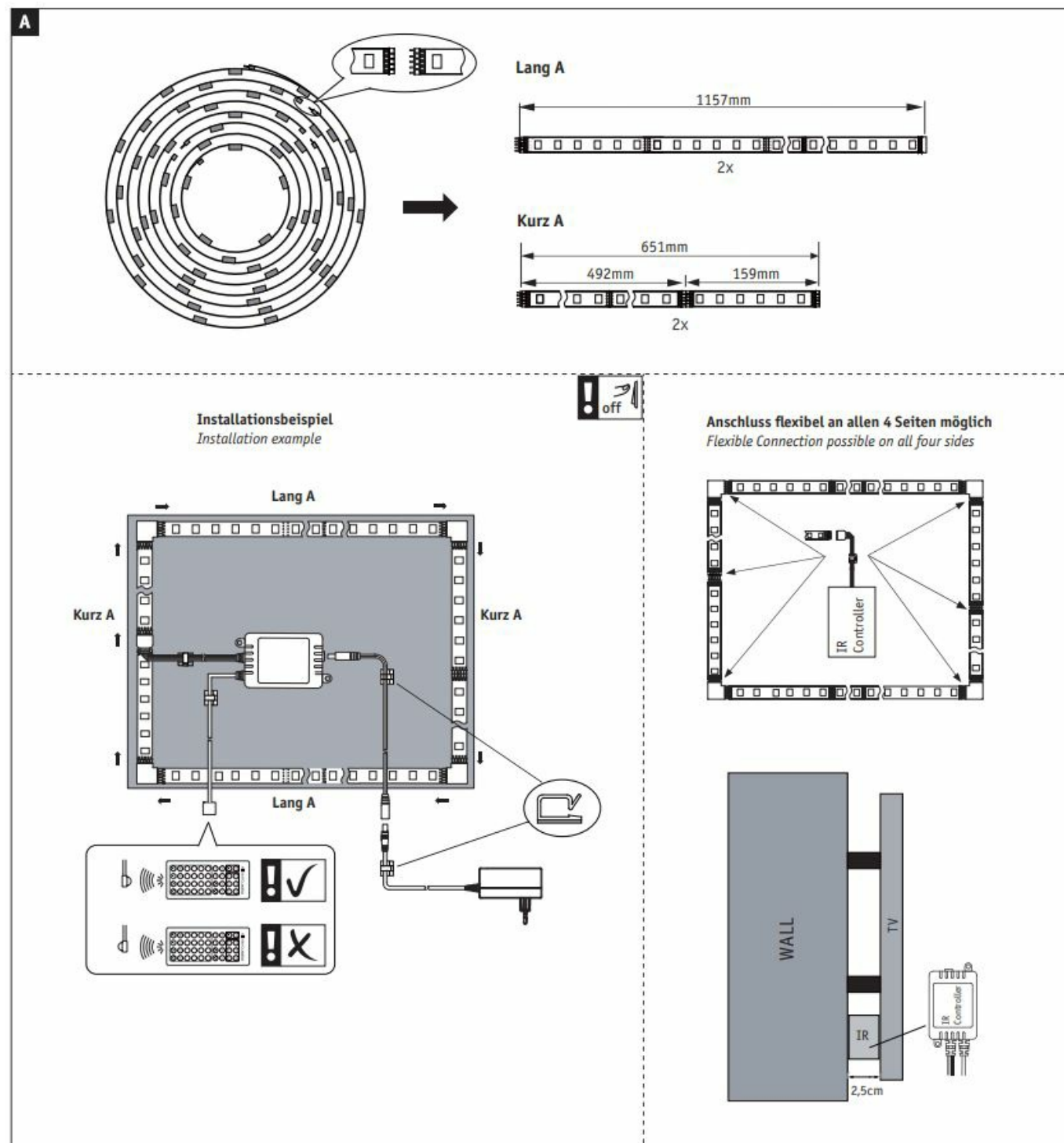
1. Ensure that the power supply is disconnected before installing or replacing the luminaire.
2. Position the luminaire in the desired location, ensuring proper alignment.
3. If necessary, use the self-adhesive cable clip to secure the cables in place.
4. Connect the power supply to the luminaire following the manufacturer's instructions.
5. Use the included IR controller to operate the luminaire. Refer to the IR controller user manual for detailed instructions on how to control the different lighting modes.
6. If the light source or operating device needs to be replaced, it can be done by either the end-user or a qualified electrician without permanently damaging the luminaire. Follow the manufacturer's guidelines for replacement.

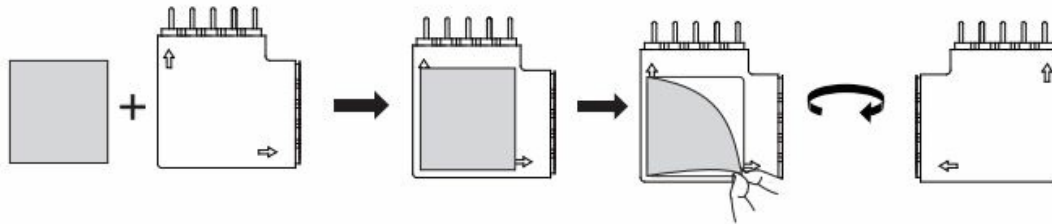
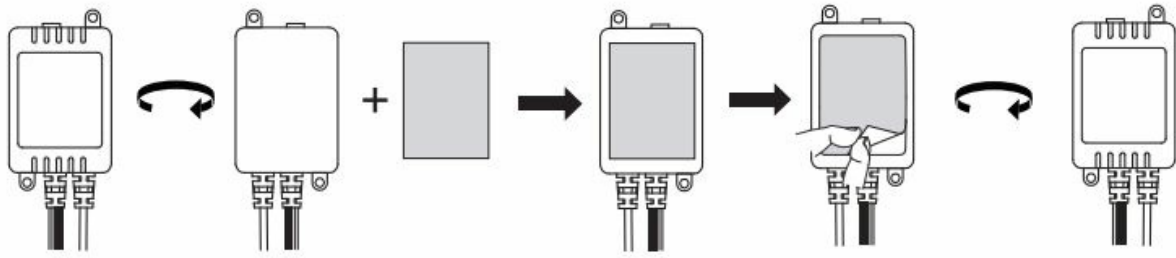
For more information and symbols used in the user manual, please visit www.paulmann.com/symbols.

WHAT IN THE BOX

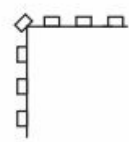
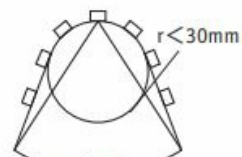
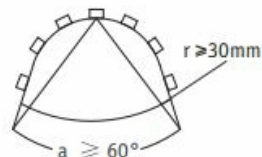
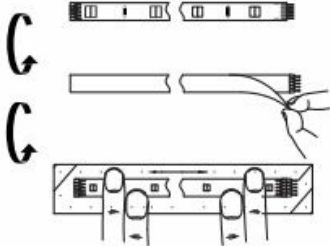
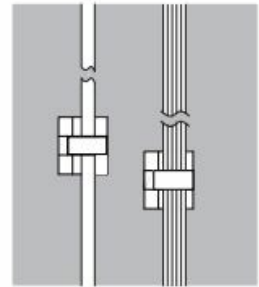
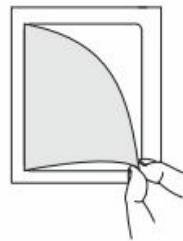
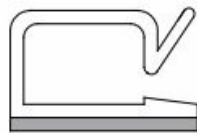
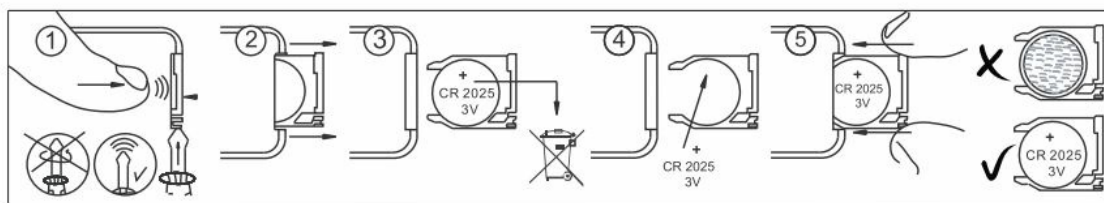
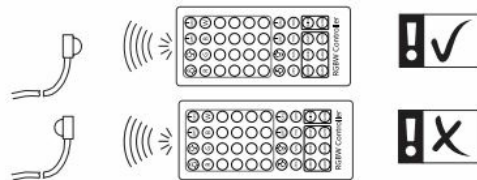
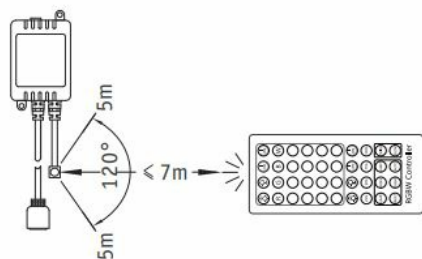


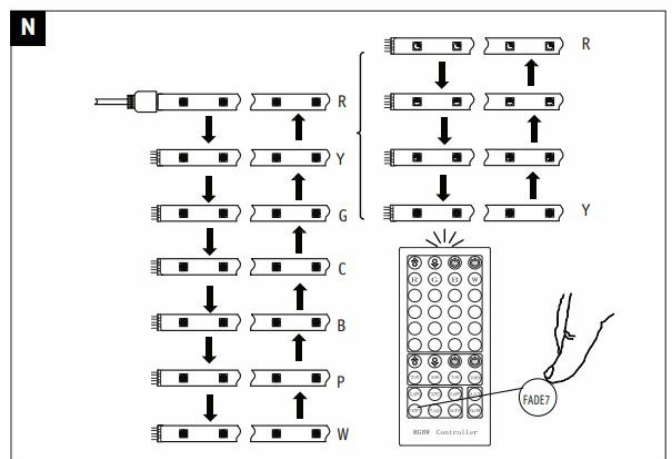
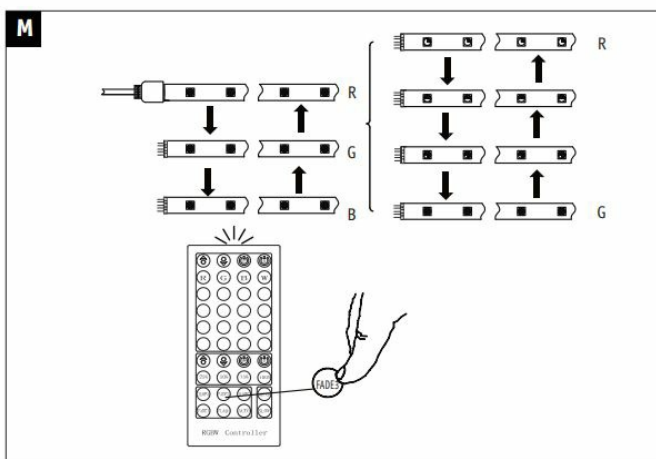
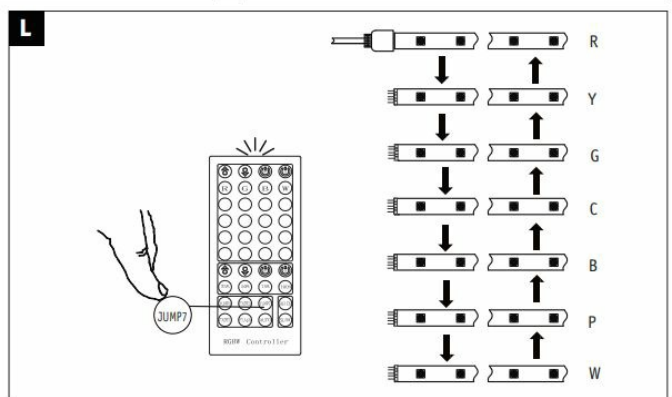
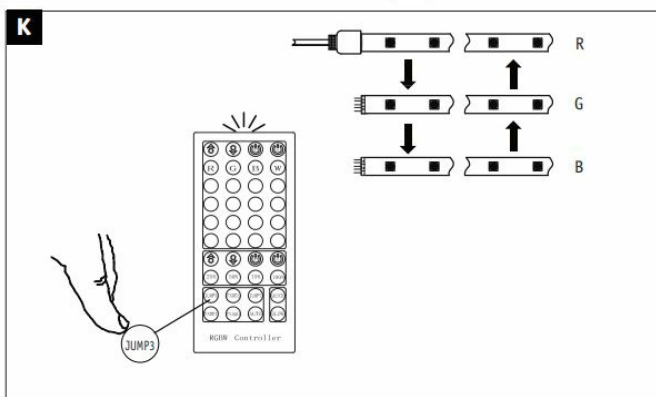
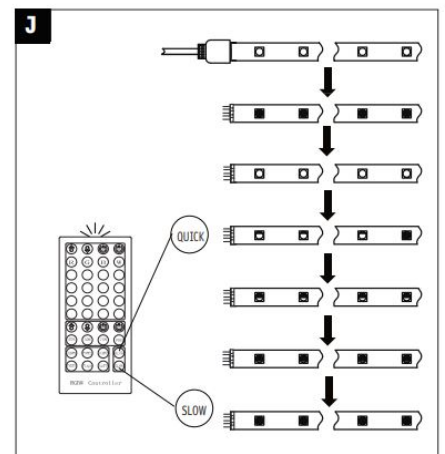
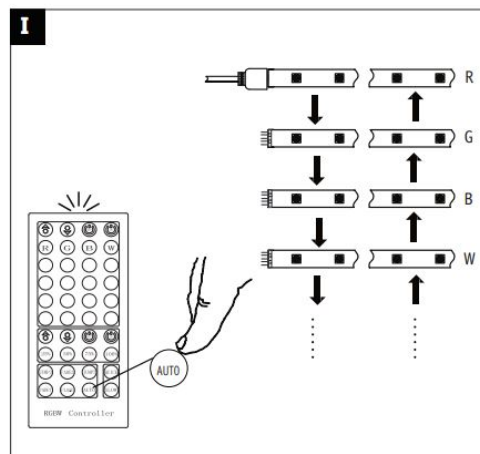
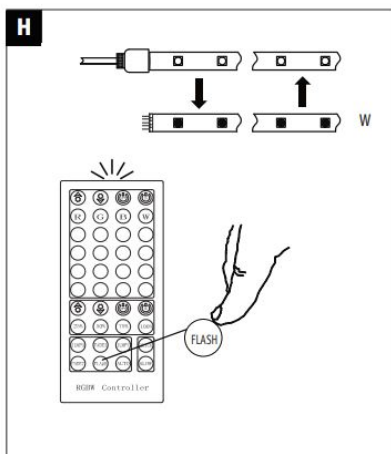
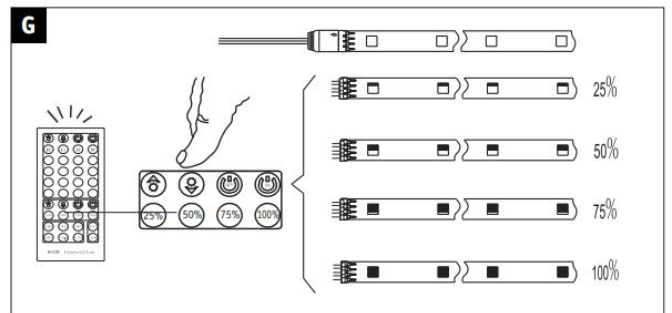
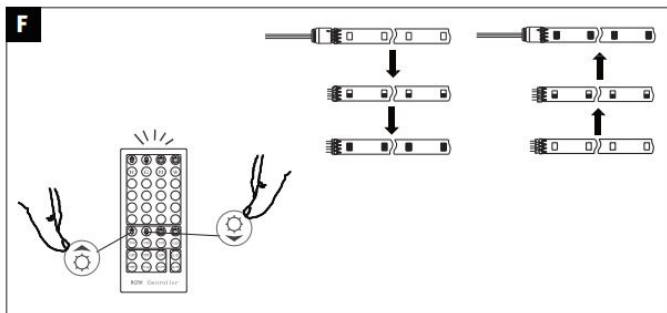
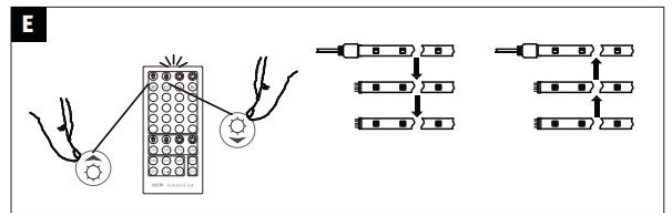
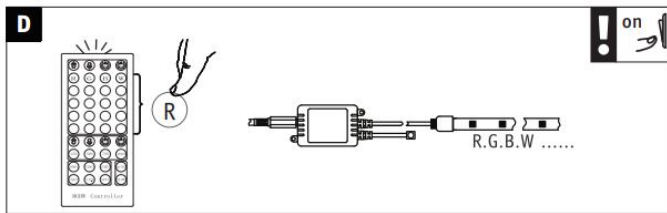
INSTALLATION INSTRUCTION

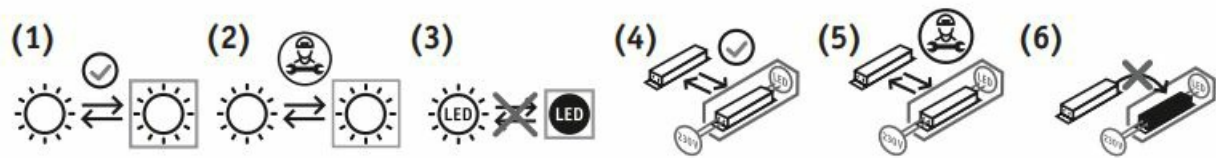


B

Kabel Clip (selbstklebend)
Cable clip (self-adhesive)

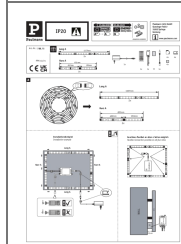
**C**





This product contains a light source with energy efficiency class <see above>. Replaceability: (1) Light source or (4) operating device can be replaced by end users without permanent damage to the luminaire. (2) Light source or (5) operating device can be replaced by a qualified electrician without permanently damaging the luminaire. (3) Light source or (6) operating device is not replaceable, the luminaire must be replaced.

Documents / Resources



[Paulmann 78875 LED Strip Basic Set](#) [pdf] Instruction Manual
78875, 78875 LED Strip Basic Set, LED Strip Basic Set, Strip Basic Set, Basic Set, Set

References

- [P Q & A: Icons on Paulmann Products](#)