



---

[Home](#) » [patura](#) » **patura P 8000 Security Box Installation Guide** 

## Contents [ [hide](#) ]

- 1 [patura P 8000 Security Box](#)
- 2 [Product Usage Instructions](#)
- 3 [Included in delivery](#)
- 4 [Accessories](#)
- 5 [Description](#)
- 6 [Application information](#)
- 7 [Installation and Mounting Instructions](#)
- 8 [CONTACT](#)
- 9 [FAQ](#)
- 10 [Documents / Resources](#)
  - 10.1 [References](#)



## **patura P 8000 Security Box**



## Product Usage Instructions

- Attach Bewuchsschutzplane A to Kederschiene 4 using self-tapping screws on a plastic pallet. Screws can be found inside the box (screw bag).
- Secure Bewuchsschutzplane 5 with the pegs provided.
- Ensure all cables are connected and terminal screws are securely tightened before sliding the drawer back into the box and securing it with screws.
- The safety box must operate in a 24 V system.
- To activate the inverter, switch its button to the “On” position.
- Once the inverter is activated, the safety box will be live and operational.

## PATURA Safety Box XXL with P 8000





### **Additionally, the required tools for assembly**

- Cordless screwdriver
- Wrench – size 20, 10
- Ratchet with nut – size 13, 10
- Needle-nose pliers
- Screwdriver – Phillips PH 2
- Multimeter / two-pole voltage tester

### **Mounting with 1 person in approx. 30 minutes**



## Included in delivery

	Pi e c e	Description
<b>1</b>	1 x	PATURA Safety Box XXL with inverter and P8000, pre-wired (Ref. 90039099)
<b>2</b>	4 x	Super Glass Mat Battery 200 Ah (Ref. 133630)
<b>3</b>	1 x	Solar Panel 480 W (Ref. 148480)
<b>4</b>	1 x	Kador Profil (Ref. 90039040)
<b>5</b>	1 x	Bottom flap to prevent vegetation (Ref. 90039041)
<b>6</b>	1 x	Earth Stake, 1.00 m (Ref. 161800)
<b>7</b>	6 x	Earth Stake, 2.00 m (Ref. 161802)
<b>8</b>	1 x	High Voltage Cable 2.5 mm, 25 m spool (Ref. 161040)



## Accessories

Accessories (available separately):

	Pie ce	Description
1	1x	High Voltage Cable 2.7 mm, aluminium alloyed, 50 m spool (Ref. 161150)



1



## Description

- The PATURA safety box XXL has been specially developed for long fences with extreme vegetation and for large herd protection fences.
- The P 8000 Tornado Power is one of the most powerful pasture fencing energisers, now also available away from the 230-volt power socket.
- High-quality components ensure long-term reliable operation, and the new solar panel with an output of 480 watts has an integrated charge controller. 4 super glass mat batteries, each with a capacity of 200 Ah, store the produced energy and ensure operation of the system even in spring and autumn.
- The high-quality inverter supplies the electric fence with power.
- As with all security boxes, the housing and solar module are electrified by impulses from the electric fence energiser. This prevents manipulation or theft.

## Technical data Solar Panel

	<b>480 W</b>
<b>Type / Ref.</b>	148480
<b>Max. output</b>	480 W
<b>Vtypical / Itypical</b>	28,5 V / 7,0 A
<b>Uno-load / Ino-load</b>	34,0 V / 7,5 A
<b>Dimensions (l x w)</b>	2000 x 1096 mm

## Application information

- Select a suitable place where the sunlight is as constant as possible
- Is there not enough sunlight, it may be necessary to recharge the battery, especially in spring and autumn
- Avoid shade, which reduces power output significantly (absolutely avoid)
- The solar panel needs to be cleaned regularly
- Make sure that the floor is as level as possible to ensure that the doors close securely!

Please note the separately enclosed operating instructions for your energiser.

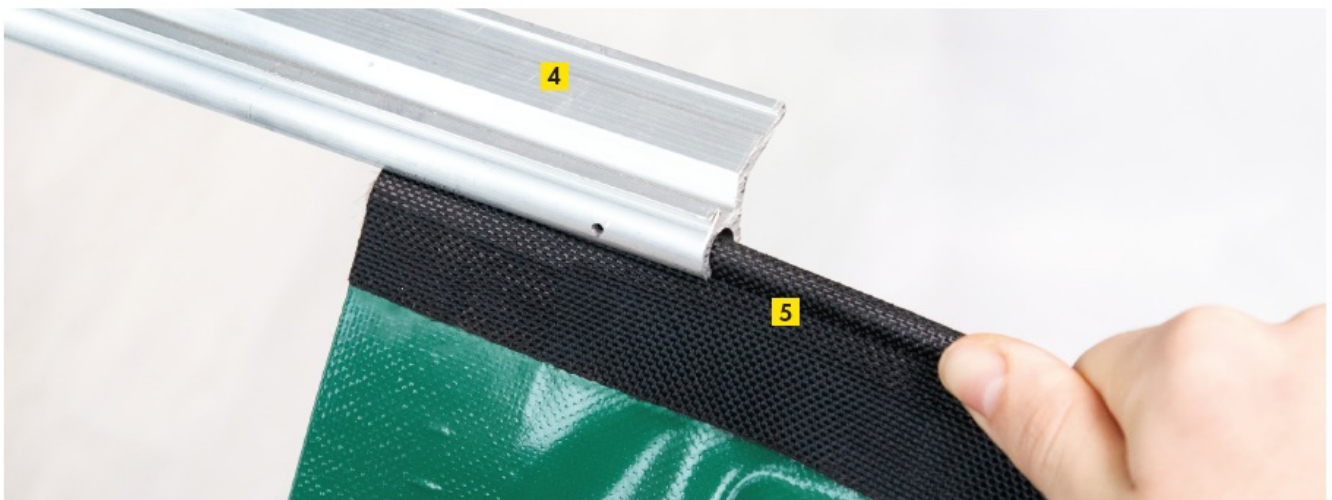
## Installation and Mounting Instructions

### Mounting the bottom flap

- **A:** Screw the kador profil 4 to the plastic pallet by using the self-tapping screws. The screws are inside the box (screw bag).



- **B:** Insert the kador of the bottom flap 5 into the kador profil 4.

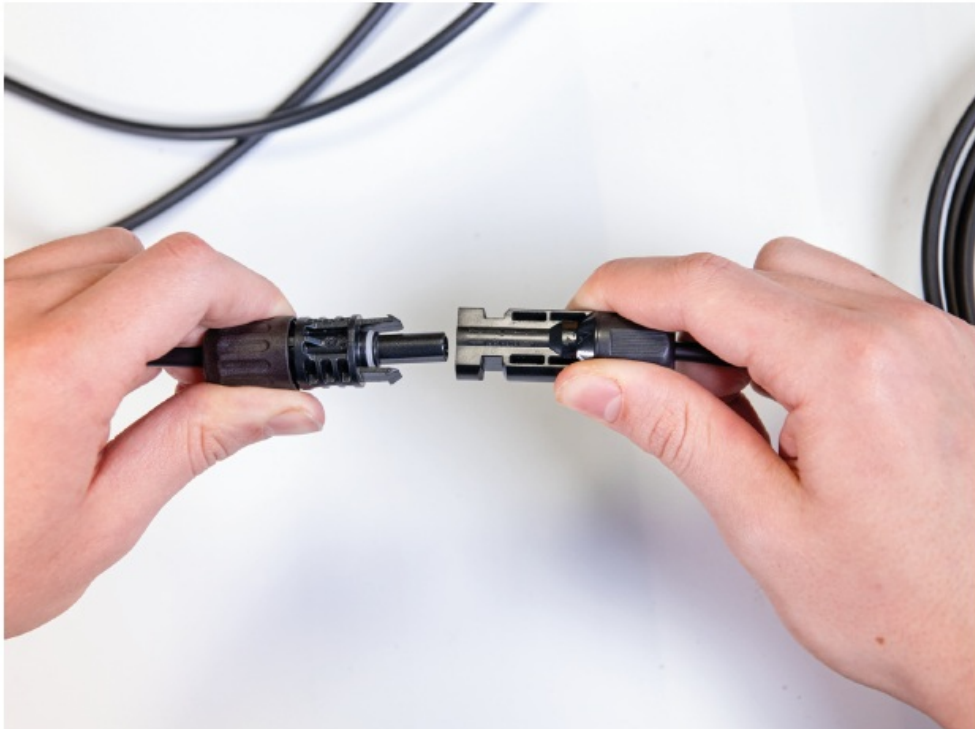


- **C:** Secure the bottom flap 5 with the pegs.



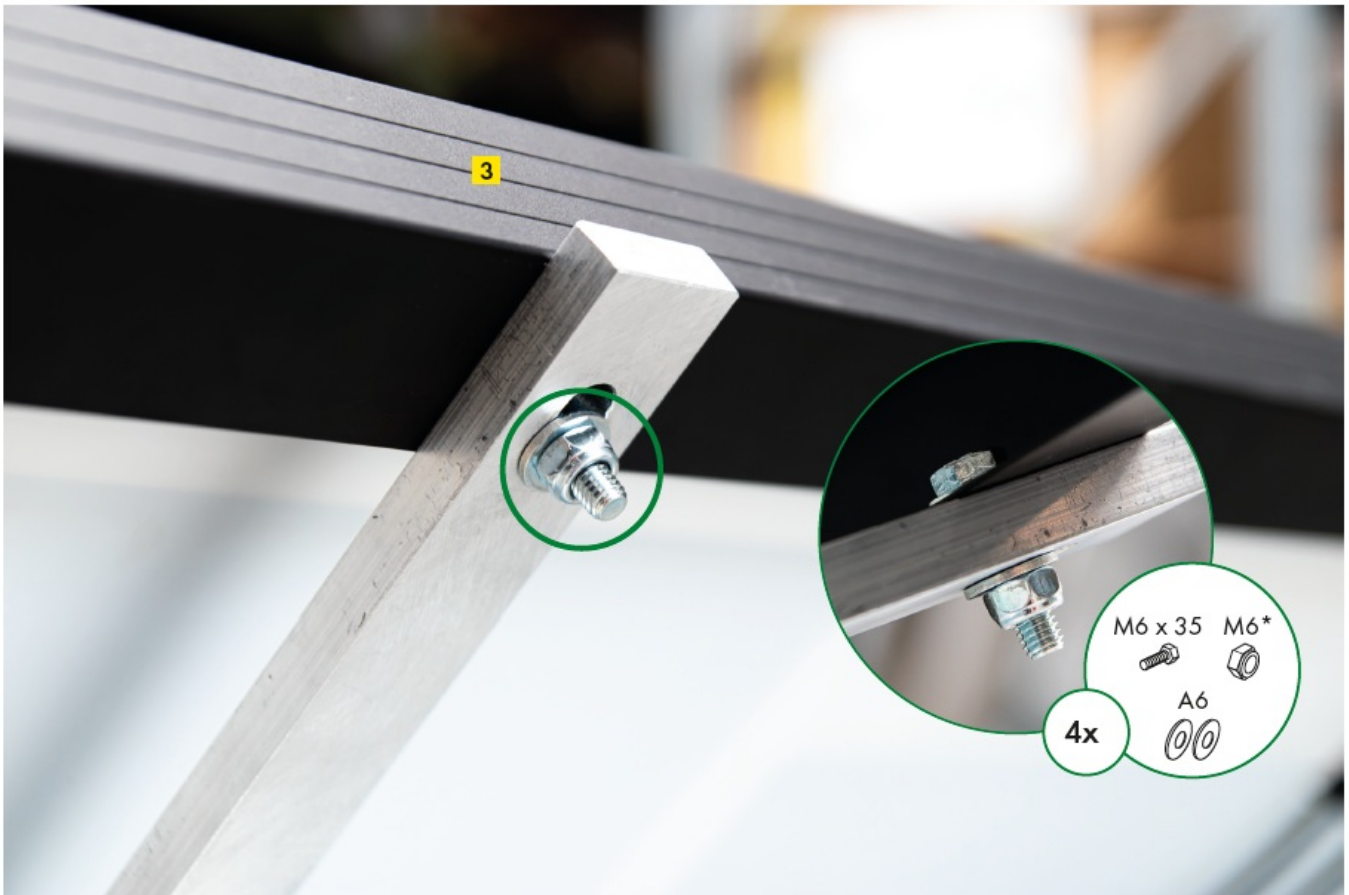
## Connecting and mounting the solar panel

- **A:** Connect the cables on the backside of the solar panel 3 to the plug connections on the backside of the safety box 1.



- **B:** Then screw the solar panel 3 to the rails.





## Connecting the cables (fence connection, earth connection and reference earth) to the energiser

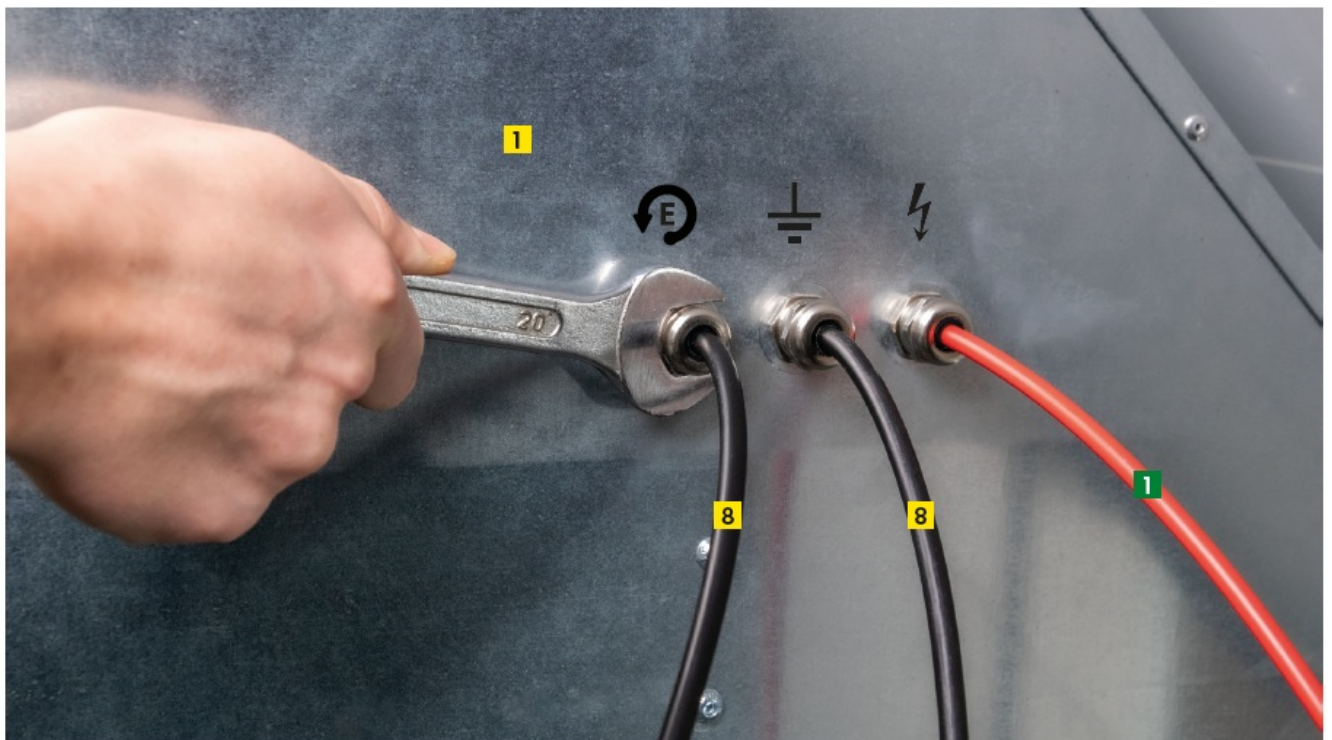
- **A:** The device drawer can be pulled out to make installation and cable routing easier. To do this, unscrew the 6 screws on the underside of the drawer guides of the safety box 1 on the left and right side.



- The drawer can then simply be pulled out.



- **B:** Prepare high-voltage cable 8 for the earthing connections: 1x reference earth, 1x main earth. The red high-voltage cable for fence connection 1 (Ref. 161150) must be ordered separately. The cables are inserted into the inside of the box 1 through the provided screw connections. When tightening the screw connections (20 mm open-end spanner) on the outside of the box, take care not to crush the cables, but still ensure the strain relief.



- **C:** To connect the cables 8 + 1 to the energiser, remove the insulation to a suitable length, unscrew the terminal screws on the electric fence energiser, connect the

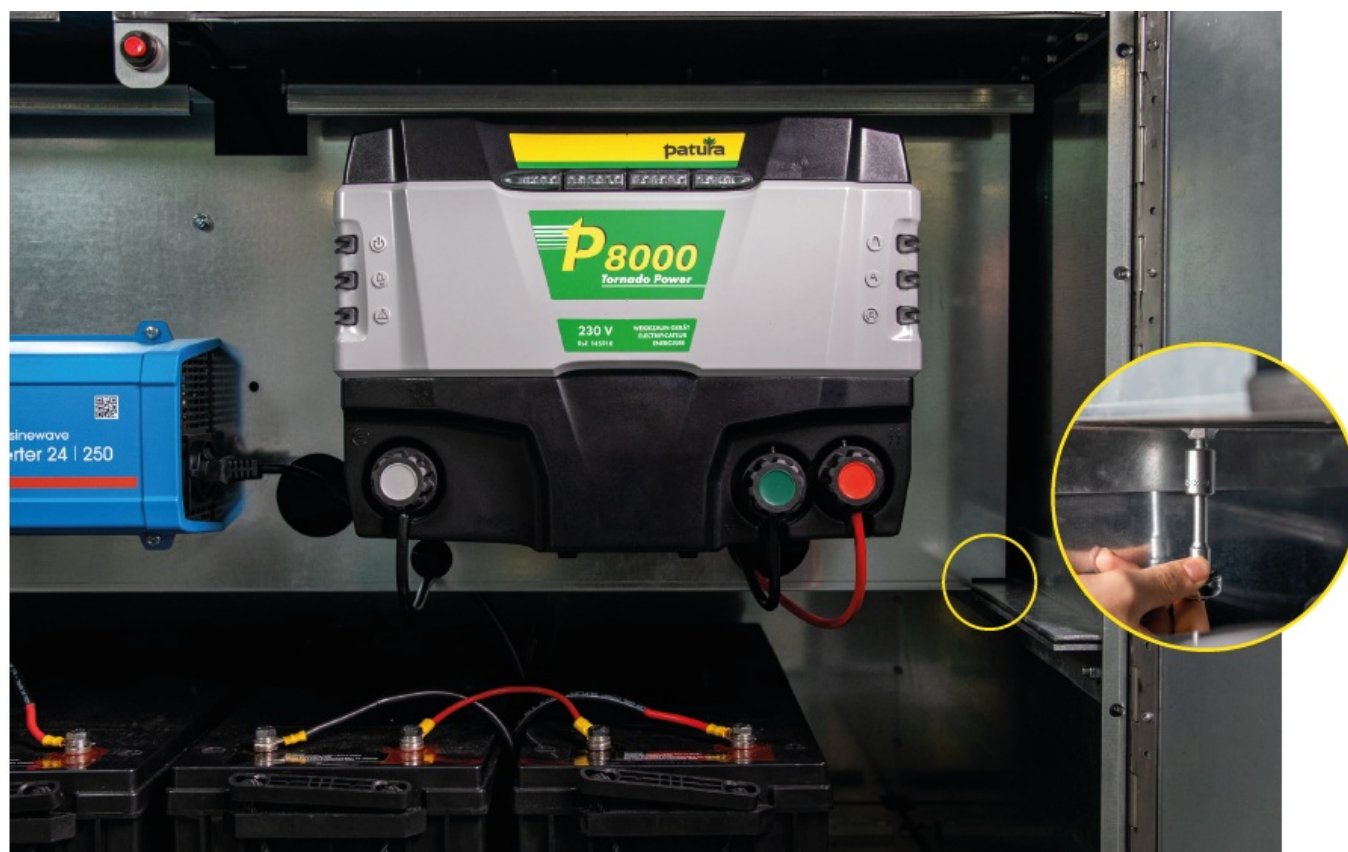


cables and screw the terminal screws back on tightly.

If necessary, mark the two earthing cables with a marker or similar.



- **D:** When all cables are connected and all terminal screws are tight, the drawer can be pushed back into the box and secured with the screws.

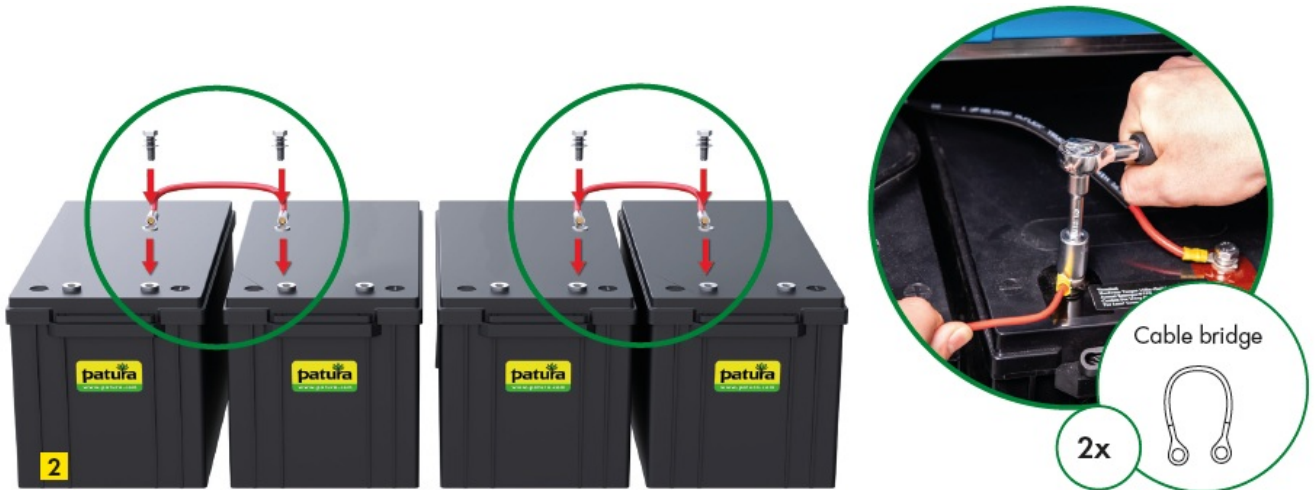


## Connecting the PATURA Super Glass Mat Batteries



**Attention:** The safety box must be operated in a 24 volt system!

- **A:** Both, the two left-hand and the two right-hand batteries 2 are connected in series. To do this, connect the two left and right batteries with the cable bridges included in the delivery. To ensure a good and secure connection, the contacts must be tightened carefully (ratchet + size 13 nut).



- **B:** The two connecting cables of the batteries are already connected to the fuse holder and are now also attached to the batteries 2 using a ratchet and nut (size 13). The contact of the black wire must be screwed to the black negative terminal a and the contact of the red wire to the red positive terminal b of the super glass mat battery.



## Connecting the earth stakes

- **A:** To set up an optimum earthing system, the supplied 2.00 m earth stakes 7 are inserted completely into the ground at a distance of approx. 3 m from each other. The connection is made by using the supplied high-voltage cable 8 .

To ensure an optimum connection, the ends of the connecting cables are insulated and formed into an eyelet.

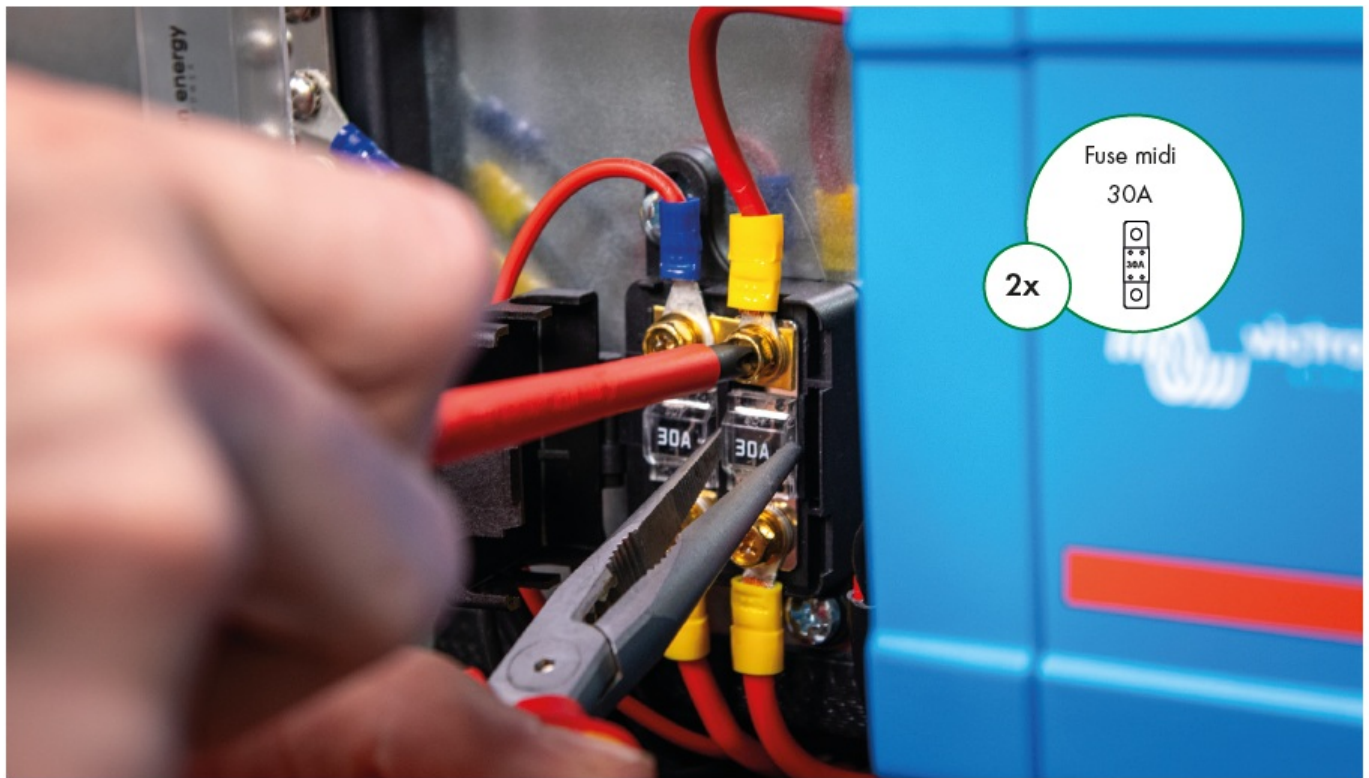
**Attention:** Insert the eyelet in the direction of rotation of the nut. This prevents the eyelet from opening when the screw is tightened. Tightening the screw/nut firmly ensures a secure fit of the cable.



- For a good earthing, so many earth stakes must be driven in until the voltage at the earth stake is below 0.6 kV.
- **B:** The reference earth is connected in the same way as the main earth. For this, the supplied 1 m earth stake 6 is driven completely into the earth and connected using a high-voltage cable 8.

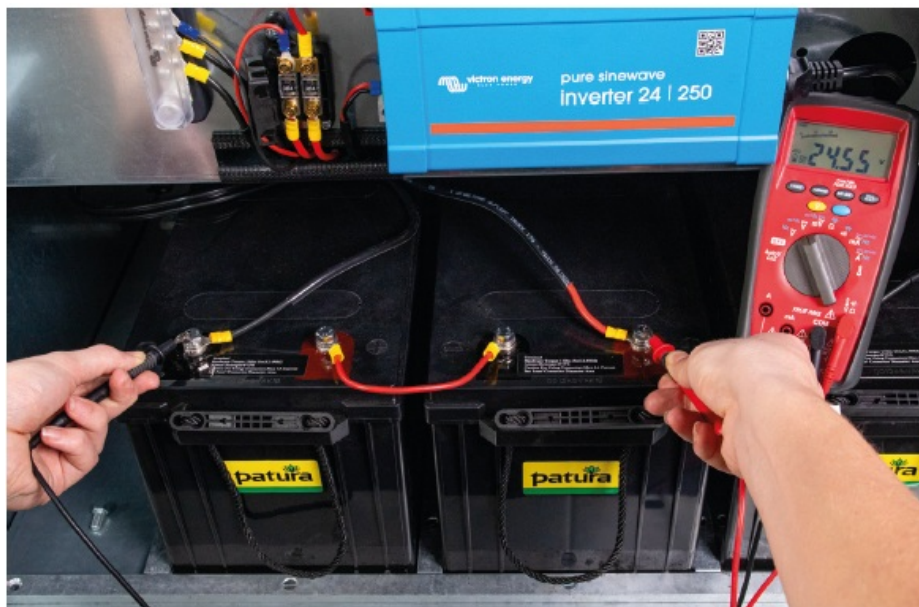
### Inserting the fuses into the fuse holder

- The two fuses must be installed by using a suitable (insulated) tool.
- Before inserting, the screws and the cables already connected to the fuse holder must be unscrewed. The fuse is then positioned with a needle-nose pliers. The cables are then reconnected and the contact screw re-inserted. The remaining three fuses can be used as spare parts.



## Start-up of the Safety Box XXL

- **A:** Before the system is activated, the operating voltage of the two battery banks should be checked. This is done between the outer poles of the batteries. A voltage of approx. 24 V should be measured here. A multimeter or a two-pole voltage tester is suitable for this measurement.



- **B:** To activate the inverter, the switch must be set to position 'On'.





- **C:** The energiser can now be tested by pressing and holding the red activation button (approx. 15 – 20 seconds) in the upper area of the safety box.



- When the function is fully completed, the safety box XXL is ready for operation. By closing the doors, the button, the system is automatically activated and the fence is live!
- **D:** Lock the box with the insulated key.



## CONTACT

- PATURA KG Germany Tel. 00 49 93 72 94 74 – 0 [www.patura.com](http://www.patura.com)
- Mainblick 1 63925 Laudenbach Fax 00 49 93 72 94 74 – 29 [info@patura.com](mailto:info@patura.com)

## FAQ

Q: Can the PATURA Safety Box XXL operate in a different voltage system?

A: No, the safety box is designed to operate specifically in a 24 V system. Operating in a different voltage system may damage the equipment.

Q: How long does it take to assemble the PATURA Safety Box XXL with P 8000?

A: The assembly can be completed by one person in approximately 30 minutes.

## Documents / Resources



## [patura P 8000 Security Box \[pdf\]](#) Installation Guide

P 8000, 900390, 133630, 148480, 161800, 161802, 161040, 161150, P 8000 Security Box, Security Box, Box

## References

- [User Manual](#)

📁 patura

💎 133630, 148480, 161040, 161150, 161800, 161802, 900390, box, P 8000, P 8000 Security Box, patura, Security Box

---

## Leave a comment

Your email address will not be published. Required fields are marked \*

Comment \*

Name

Email

Website

☐ Save my name, email, and website in this browser for the next time I comment.

**Post Comment**



## Search:

e.g. whirlpool wrf535swhz

Search

[Manuals+](#) | [Upload](#) | [Deep Search](#) | [Privacy Policy](#) | [@manuals.plus](#) | [YouTube](#)

This website is an independent publication and is neither affiliated with nor endorsed by any of the trademark owners. The "Bluetooth®" word mark and logos are registered trademarks owned by Bluetooth SIG, Inc. The "Wi-Fi®" word mark and logos are registered trademarks owned by the Wi-Fi Alliance. Any use of these marks on this website does not imply any affiliation with or endorsement.