



# Patriot VRM12 Viewer Reader Multi Media System User Manual

[Home](#) » [PATRIOT](#) » Patriot VRM12 Viewer Reader Multi Media System User Manual 

## Contents

- [1 Patriot VRM12 Viewer Reader Multi Media System](#)
- [2 Product Information](#)
- [3 Product Usage Instructions](#)
- [4 Introduction](#)
- [5 The EXTRAS SCREEN](#)
- [6 Specifications](#)
- [7 Documents / Resources](#)
  - [7.1 References](#)
- [8 Related Posts](#)



**Patriot VRM12 Viewer Reader Multi Media System**



## Product Information

The Patriot VRM system is a viewer/reader/multimedia system designed for the vision challenged to regain increased independence and access to information, news, print, daily tasks, and entertainment. It features stunning optics producing brilliant contrast magnification, reducing eye strain and increasing comfort. The built-in Reader feature allows the printed text on the page to be spoken aloud, providing an alternative way to consume lengthy documents or large volumes of text.

The package includes a 12.4-inch high-definition touchscreen system mounted on a custom folding stand with adjustable torque positioning. It also comes with a carrying case, a power adapter, a USB powering cable, and a user manual.

## Product Usage Instructions

### The Metal Stand:

The Patriot comes with a custom stand that offers multi-positioning for adjusting to your comfort. The stand can be folded until nearly flat and has a handle on top for easy carrying and protection.

### Power Cable:

Connect the power adapter to the Patriot system using the provided power cable.

### Using the Magnifier:

1. Hold your reading material under the screen with one hand. With your other hand, use one finger to single tap

on the screen to set the focus to reading material.

2. To change the color mode, use three fingers to single tap in succession:
  - Full Color
  - Brighter Full Color
  - Positive (Black text on white background)
  - Negative (White text on black background)
  - Black text on a yellow background
  - Yellow text on a black background
  - Black text on a green background
  - Green text on a black background
  - Blue text on a yellow background
  - Yellow text on a blue background
3. To zoom in or out on the text size, use your thumb and pointer finger to pinch them together or spread them apart.
4. Use the red settings button in the lower left corner to make changes to the Magnifier features. Double-tap each option on the menu to explore different configurations.
5. To close the Magnifier, double-tap the X button on the upper left side.

### **Using the Reader:**

1. From the Patriot menu, double-tap with one finger to select the Reader option. You will hear "Reader Started".
2. Raise the adjustable arm so that it is parallel to the platform below.
3. Lower the adjustable arm to see the screen being read aloud.
4. To pause the reading, single tap with one finger. To continue, single tap with one finger again.
5. To read from a specific word or area of the text, single tap on the area you'd like to read from.
6. Adjust the size of the document by using the pinch technique (pointer finger to thumb) to spread for larger size or pinch for smaller size.

## **Introduction**

Congratulations on your purchase of the Patriot VRM System (referred to here as Patriot). Patriot is designed for the vision challenged to regain increased independence and access to information, news, print, daily tasks, and entertainment. With your Patriot, you can discover adaptive access to any level you want. First, we start with stunning optics that produce brilliant contrast enhancement that helps you read and write with reduced eye strain and increased comfort. Second, with the built-in Reader feature you have the option to listen while the printed text on the page is spoken aloud. Sometimes a long document or a large volume of text is just easier to hear while giving your eyes a rest.

### **What's in the box**

Included is a 12.4-inch high-definition touchscreen system mounted on a custom folding stand with adjustable torque positioning, a carrying case, a power adapter for the Patriot, a USB power cable, and this user manual.

### **The Metal Stand**

The Patriot has a custom stand that has multi-positioning for adjustments to suit your comfort. The stand allows for folding to almost flat and also has a handle on top for easy carrying and protection.

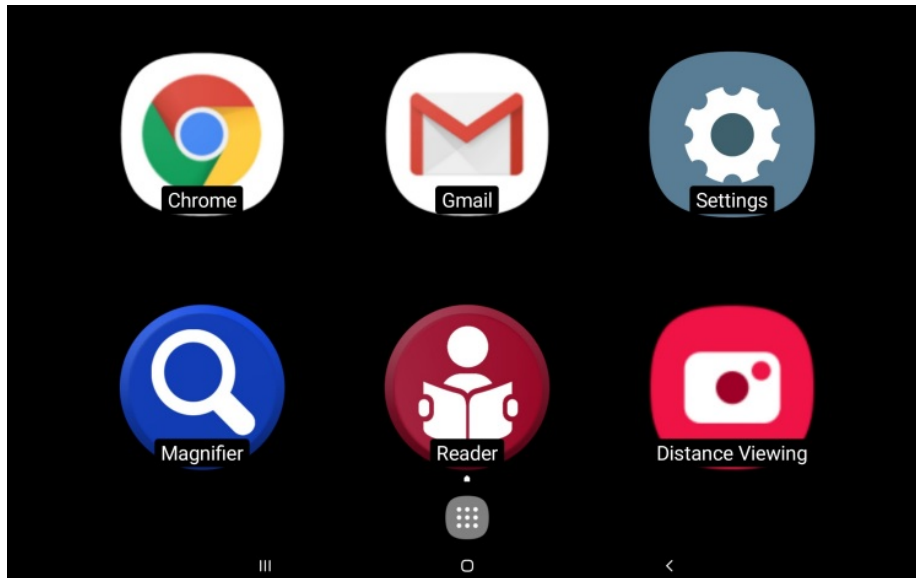
### **Power Cable**

A power cable is all that is needed to use the Patriot. It is a SAMSUNG® USB cable with a SAMSUNG® Power Block. The power adapter is white with a double USB connector to charge your Patriot®. It is labeled

SAMSUNG®.

### Using your new Patriot

- **Step One:** Plug the white power adapter for Patriot into a properly grounded wall outlet and the other end into the left USB doublet port of your Patriot VRM.
- **Step Two:** Turn on your Patriot by pressing the Power button. The power button is thin two inches from the bottom right corner of the touchscreen. It is used to turn the power on or off. Otherwise, it can be quickly pressed to put the Patriot into sleep mode or wake it from sleep mode when it is in sleep mode. This will bring you to the Patriot menu, shown below



- **Step Three:** from the Home Screen, use one finger and tap Magnifier to open it. It will announce “Magnifier Started”.
  - Next, keep your reading material as low as possible below the screen, you can start using this as a video magnifier to watch for reading items. Just follow the instructions below:

### Using the Magnifier:

Hold your reading material under the screen with one hand. With your other hand, use one finger and a single tap on the screen to focus on your reading material.

Next, with three fingers a single tap in a row, change the color mode as follows:

- Full time
- Lighter color
- Positive (Black text on white background)
- Negative (white text on black background)
- Black text on a yellow background
- Yellow text on a black of background
- Black text on a green background
- Green text on black background Blue text on
- Yellow background Yellow text on blue background

Next, using your thumb and index finger, pinch them together and spread them apart, increasing the text size larger or smaller. The lower left corner has a red settings button for making changes to the magnifier features. These are set to a typical configuration for most clientss but can be explored by double-tapping any option on any menu. Close the zoom by double-clicking the X button in the upper left corner.

### Using Reader

From the Patriot menu, select the Reader option by double-tapping with one finger. You hear Reader Started.” Raise the adjustable arm so that it is parallel to the platform below.

Place your document under the raised screen using the front edge as a guide in placement. Look at the screen to see that the entire document is viewed on the screen. This is the basic orientation used to photograph the material for reading aloud. For all practical purposes, you will not be required to view the top of the screen when working with the reader. For now, it is useful to understand the various mechanics by viewing. If the document to be photographed appears in the center of the screen, double tap with one finger on the center of the screen and it will photograph the document to start the process of converting to speech. You will hear a shutter sound.

- You can lower the adjustable arm to see the screen being read aloud.
- You can pause with a single tap of one finger, then resume with one finger.
- You can highlight a specific word or area of text by tapping a few times on the area you want to read from.
- You can adjust the size of the document by using the pinch technique (index finger to thumb) spread for larger sizes and pinch for smaller sizes.
- You can position the document in view by dragging two fingers to the right or left or up and down to navigate to the section of the document you would like to see.
- When you're done with Reader, you can exit by tapping DOUBLE on top of the red X button in the top left corner. This will take you to the next option to photograph another document by repeating the process. To exit completely is double-tap tap on the red X until you are completely out of the application.

### **Use the news (WiFi enabled)**

With WiFi connected, you can explore available online newspaper content. To access news with one finger, double tap the NEWS option from the Patriot Menu, DOUBLE TAP USA, for example, DOUBLE TAP LOCAL, DOUBLE TAP ALABAMA, DOUBLE TAP BIRMINGHAM, DOUBLE TAP SPORTS, and DOUBLE TAP HISTORY to listen

**Note:** Not all stories are available and subscriptions to different newspapers may be required at additional cost. Exit the news feed by double-tapping HOLD with one finger on the red X in the upper left corner. Do this again and again until you get back to the Patriot menu.

### **THE HOME SCREEN**

You can choose from the six shortcuts, the magnifying glass, the reader, the e-mail application, the Internet, distance viewing, and settings.

### **Email**

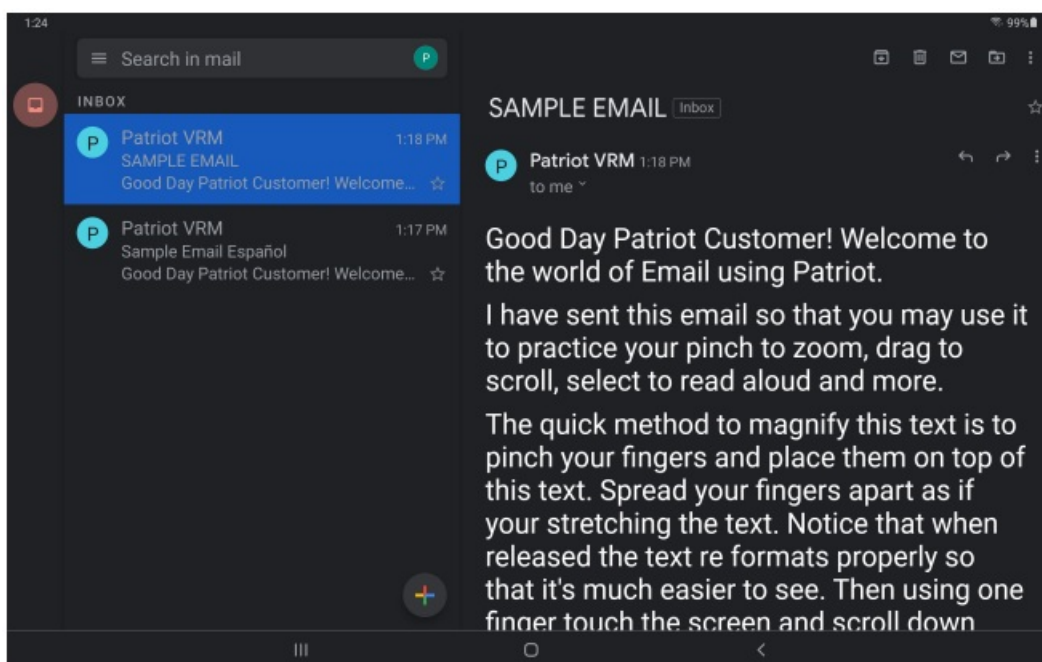
#### **View email**

Press the HOME button in the center of the Patriot touchscreen. This will return you to the HOME SCREEN. With a single finger, tap the email application displayed on the screen.

- It has a big white envelope in the bottom right corner of the HOME SCREEN.
- A new email account has already been loaded by us for you to use whenever you want on your device, you can now use your email. If you want to set up your existing email address, see Exhibit Two – Setting Up Your Email
- For now, there is already an email account set up on your Patriot. It has the username patriot\_\_\_\_\_, where \_\_\_\_\_ is the serial number of your Patriot. The password is the serial number of your Patriot. This email was necessary to build your unit, but it can be ignored and even deleted if preferred. We recommend leaving it as a backup for us to send you technical information if your email is not yet configured or not working.
- Select the sample email of this account. Enlarge your email by pinching the selected text in the body of

the email. When zooming with PINCH is used, incoming e-mails from friends and family members are shown as text in a reformatted view making it easier to view.

You can use a finger to drag down the body of the text and left or right to continue reading until you reach the end of the text.



**Note:** Some e-mails appear as text, but rather images of the text as in the advertisement. You need to enable ZOOM with one finger triple tap and DRAG around the image of the text with two finger DRAGGING. Remember that you must disable ZOOM after use otherwise, everything will be enlarged and will not fit on the screen. Turn off ZOOM by using a finger triple tap.

### Compose Email

With one finger, choose from the top right options. Each is a graphic symbol that indicates from the left: View Format (two columns versus three columns), Compose, Reply, Forward, Delete, and the last symbol is for settings in the email. Select the Compose button which is the second button from the left as explained above. With a finger, single flowing right of the

### TO: Dialog Box

Using the on-screen keyboard, enter the email address you are sending to. Note, that contacts can be entered once and the list will be displayed below the box that allows you to choose from the appropriate name in your CONTACTS. Next, enter the subject information if desired. Next, with a single finger at the top of the body of the email window and using the onscreen keyboard, you can type your message.

Another alternative to reduce typing is to use your own voice to speak aloud the content you'd like to type on the screen. TAP on the keyboard icon in the lower right corner of the keyboard and then select "Google Voice Typing". With one finger, press a single on the composition symbol. It is located at the top right of the screen. You will see three icons in the upper right side of the screen, the second one from the left is the composition icon. TAP on this to write an email. If you compose in the body of an email, TAP on the keyboard icon in the lower right corner of the keyboard and then select "Google Voice Typing", wait for the audible sound, then speak your content. TAP on the microphone key on the screen to open. Your spoken words are placed on the screen as text. You can first use one sentence at a time or simply speak fluently one paragraph at a time. You must announce the word "period" if you want a period to be inserted during your Google Voice typing. Editing your spoken text using your on-screen keyboard may be necessary before sending it. This is achieved by pressing the area to edit, the on-screen keyboard will automatically appear, and make adjustments. External keyboards can also be used with the Patriot, sold separately, but may not include the microphone key. Please call for further information.

### Talk to your patriot

Assuming your Patriot is "online" and connected to the Internet, you can request information using your

voice. You can talk to your Patriot by either asking questions, referred to here as VOICE SEARCH or requesting an action, referred to here as COMMANDING.

### Voice Search

- Make sure your screen is on and simply say the words “OK Google”. After speaking, you will hear a musical sound, then ask a question like “what’s the temperature outside?” A verbal response will be provided to answer your question.
- Press the HOME button again and you will return to the HOME SCREEN. Repeat the procedure each time you want to ask your Patriot questions.

**Note:** If the unit does not respond to you and says “OK Google”, you must first program your different voice and settings as described on the next page.

You must perform the following steps if your PATRIOT does not recognize the verbal phrase “OK, GOOGLE”. First, you need to make sure that your device is connected to the Internet. Navigate to the HOME SCREEN using the HOME BUTTON. Use a single finger on the square above the HOME BUTTON to access the APPS installed on the device. Then you need to TAP on the folder that is titled “Google”. From there TAP on the icon that says “Google”. Then TAP on the small circle near the top of the center of the screen with the letter “P” in it. The letter may be different if your Google account is loaded on the device. The letter in the circle is always the first letter of your first name. The “P” indicates that you are still using the preloaded Patriot Google account. Changing the settings can be problematic, so we are careful to explore these with the help of our technical department or one of our representatives. Having said this, you can carefully proceed to the following

### TAP SETTINGS > TAP VOICE TAB ON THE LEFT OF THE SCREEN > TAP

VOICE MATCH > TYPE “VOICE MODEL” OR “TRAIN VOICE MODEL” OR “RETRAIN VOICE MODEL” > FOLLOW THE STEPS FOR THE NEXT SENTENCES THAT ARE YOUR VOICE ONLY > FOLLOW THESE STEPS UNTIL FINISHED. Now your device recognizes your voice when you say “OK Google”.

### Exam The questions you can practice with are:

- OK GOOGLE, [waits for the sound] What’s the time?
- OK GOOGLE, [wait for sound] What’s the temperature outside?
- OK GOOGLE, [wait for singing] What was the score of the Florida Marlins game?
- OK GOOGLE, [wait for the sound] Do I need an umbrella tomorrow?

To turn this feature on and off, simply press the HOME button at the top of the screen under the clamp at the top of the touchscreen.

**Note:** Most frequently asked questions successfully result in a verbal response. However, a compound question that asks with less specificity may result in an answer that is not spoken out loud, but rather delivered on screen. This can be viewed by vision users with magnification as follows:

With one finger, activate ZOOM by triple tapping the screen with one finger and then zoom, and then drag with two fingers. It should be noted here that the triple tap with a single finger works everywhere throughout the use of Patriot. Remember to triple tap with a single finger to turn off the enlarged screen option when no longer needed, otherwise the screen will appear to fall “the left and right edges of the framed border.

### Internet, Read Aloud, Patriot Speak, and Zoom

Start browsing the Internet from the HOME SCREEN with a single tap on the Chrome shortcut. The default page is the GOOGLE search engine which asks you to enter your search phrase.

**Note:** The Internet settings have been made to improve your experience when browsing the world web. However, this is an advanced exercise as the content of the web is created with an endless variety of colors, sizes, fonts, formats, from fairly simple to extremely complex. Therefore, you will encounter websites with a poor choice of colors or extremely short texts. This is the responsibility of the web master creator for each site.

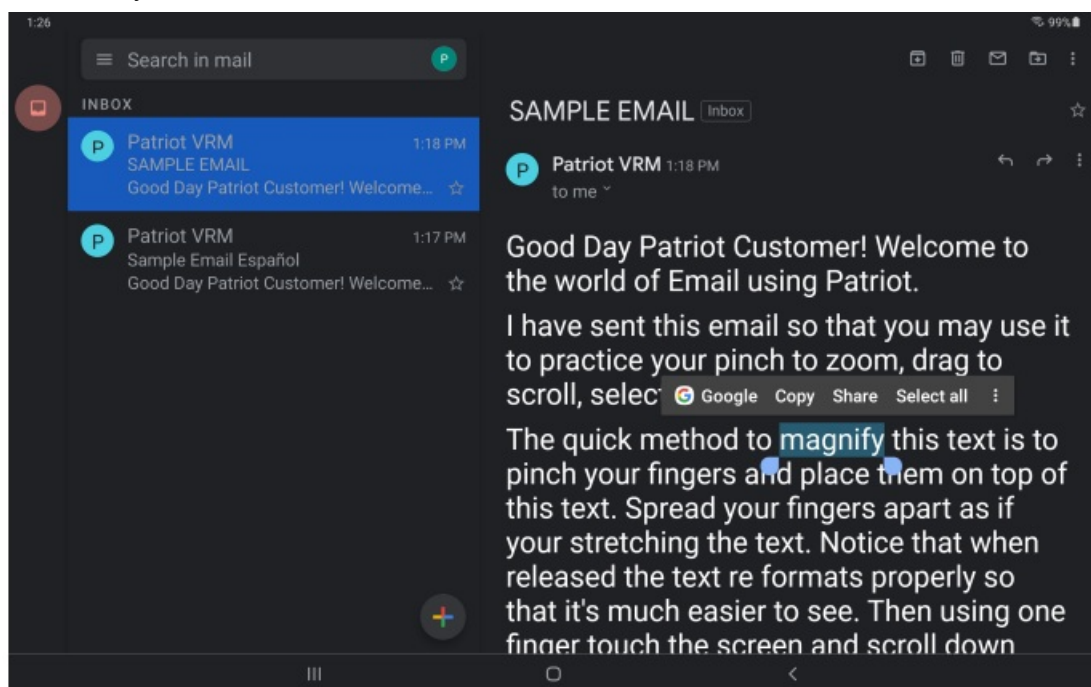


Although we have set to enable larger fonts and easier-to-see text websites, you may need to enable ZOOM.

- ZOOM is a tool that is activated by using one finger and pressing quickly on the screen.
- ZOOM is always available across all screens in all circumstances but refuses to use you unless absolutely necessary.
- When ZOOM is turned on, you can see a light blue highlighted framed border that ZOOM is turned on. Regardless of whether it's visible to the user, everything gets bigger and pinch to zoom works on everything on the screen.
- ZOOM must be disabled using a single finger to quickly triple-tap so that or down to the bottom of the web page with two fingers together. Be patient as websites are sometimes overwhelming and very “busy” full of content, videos, text, graphics, advertisements, links to other pages, sound clips, and more. With practice, finger gestures become second nature as you develop your skills through practice.

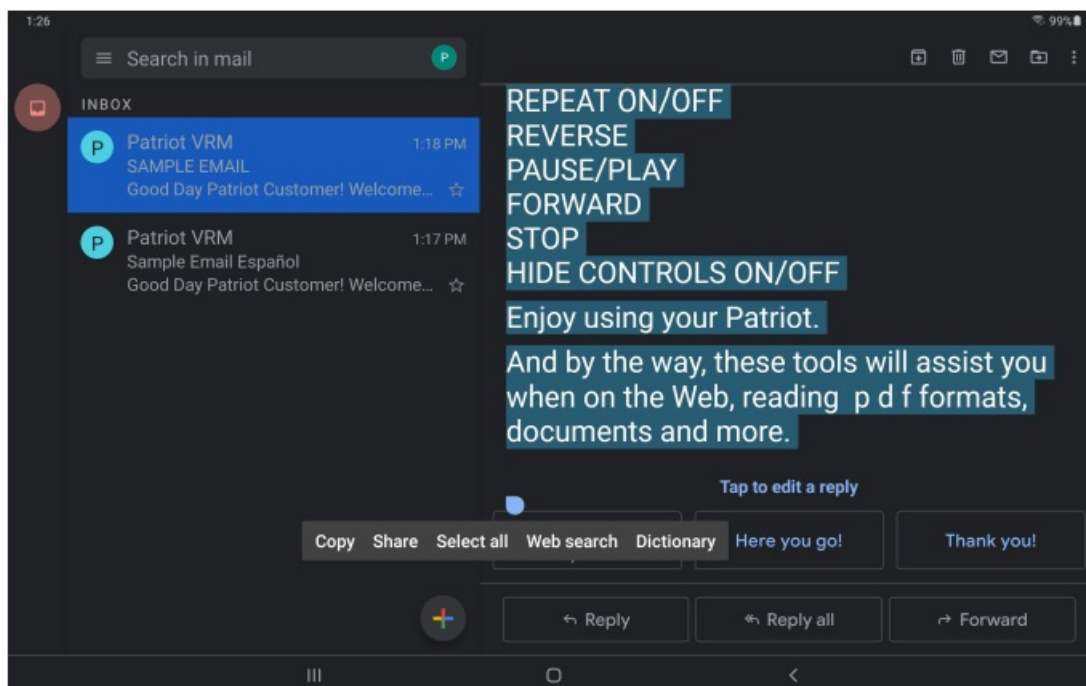
**Remember!** Exit ZOOM by using a single finger and pressing quickly. Again, the technique of triple tapping very quickly together is a bit tricky but you will master it with practice. Over-enlarging with ZOOM reduces the field of view resulting in an increase in the need to draw across the screen. Screen to convert with easy-to-see reading within the margins AND reading aloud too.

- This is achieved by clicking directly on the screen at the top of the text on any particular website. TAP on the button that says “Select All”.

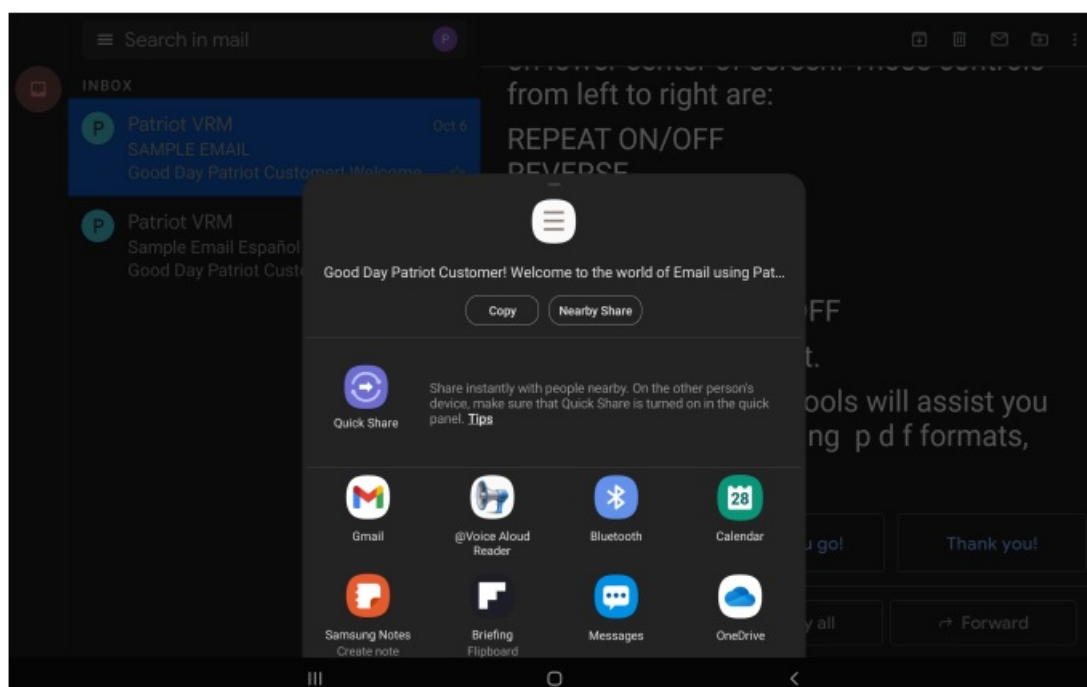


- Then scroll down to the bottom and TAP on the “Share” button.

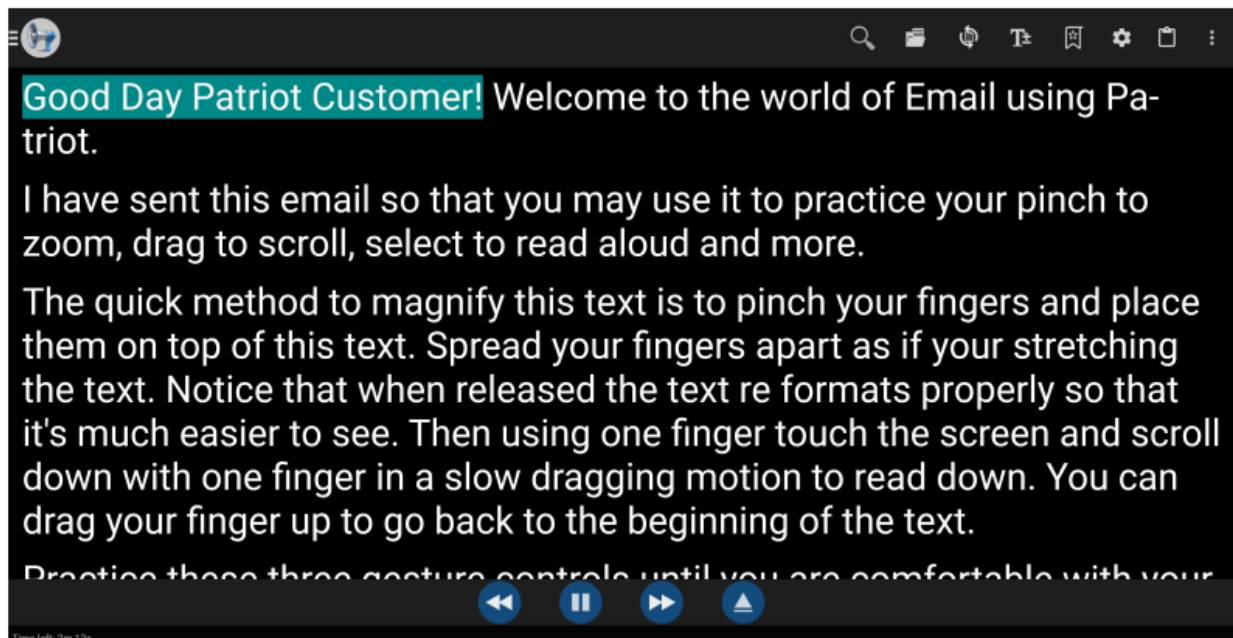




- From the next screen that automatically pops up, select the BLUE MEGAPHONE option.



- The content is transformed to a large font within margin limits and read aloud. Each section that is read aloud is highlighted.
  - **Note:** the controls for this readout program are at the bottom center of the screen.
-



There is a play/pause button, a rewind button and a fast forward button. You can also pause reading, scroll down to a desired sentence to start from, and then DOUBLE TAP on that sentence to read the program from there. Be careful not to TRIPLE TAP, otherwise you will activate SCREEN ZOOM and you will have to TRIPLE TAP again to turn off SCREEN ZOOM.

## The EXTRAS SCREEN

### PATRIOT-VRM-12-Viewer-or-Reader-or-Multi-Media-System-Fig-7

The next screen is the EXTRAS SCREEN. You can navigate to this screen by gently swiping from right to left side of the home screen which shows this EXTRA. This screen has six large shortcuts to quickly launch options. Drawn from the top left corner are the following: You Tube, Calculator, Gallery, My Files, Contacts, & Play Store.

Each of these options can be selected using one finger and a single tap to launch. Then explore. You Tube hosts online videos ranging from short videos to complete shows. Calculator is a handy tool for help at any time Gallery is home to your photos with the camera My Files is where your files are stored and categorized contacts include all names and addresses you enter Play Store is a shopping portal of thousands of APPS

## Specifications

- Samsung Tab S7+ (Model #SM-T970)
- Android 11
- 12.4" WQXGA+ 120Hz Display 2800×1752 / 256 DPI
- FULL HD 1080P Playback and Recording
- GPS Location
- Li-Po 10,090 mAh, non-removable Battery
- Fast charging 45-watt
- IR LED
- 8GB RAM
- 256 Gig Storage (Approx. 200GB available to use)
- Qualcomm Snapdragon 865 CPU 8 Core – 3.09GHz

- Bluetooth 5.0
- Wi-Fi 802.11 a/b/g/n/ac/ax 2.4G+5GHz, HE80, MIMO
- Headphone jack
- 2 Cameras: Rear facing camera & Front facing camera SD
- Memory Card Slot
- 8 User Modes
- Light weight powder coated custom aluminum stand
- Torque hinges
- Samsung Stylus Pen

### Set up your email

You can add your existing email and/or Google account through the settings section of your Patriot.

- TAP on the HOME BUTTON
- TAP on the big gear icon to launch the Settings APP
- Scroll up/down on the left column and TAP on “Accounts and Backup”
- TAP on “Manage Accounts”
- **Note:** You will see the pre-loaded Patriot account
- TAP on the “+ Add Account” button to add your account TAP on the appropriate account you want to add and sign in to the account. Consult with us for further assistance if needed.

### Glossary of terms

- **PINCH** – technique using two fingers, namely the thumb and forefinger in a spread or pinched manner to achieve magnification and zoom
- **SWIPE** – use one finger and slide quickly across the screen right left, left right
- **DRAG** – with two fingers and slide across the screen to “pull” the viewable image up down or left right movements
- **CLICK** – tap the screen with one finger and quickly
- **ZOOM** – activate using one finger and quickly triple tap on the screen, perform ZOOM again to turn it off
- **HOME BUTTON** – physical button located at the top of the screen directly centered and under the CLAMP at the top of the screen
- **POWER BUTTON** – located two centimeters from the bottom right corner of the screen underside of frame. This button is most easily pressed by placing your finger all the way to the right and sliding left until engaged
- **SLEEP BUTTON** – identical button as POWER BUTTON when pressed quickly unit sleeps and wakes unit
- **POWER OFF** – can only be performed by long pressing the POWER BUTTON while the unit is plugged into AC power, otherwise RESTART will occur when long pressed under battery power
- **DOUBLET USB port** – located on the left side of the screen along the edge of the frame, push the right USB supplied cable with ribbed surface facing the user
- **Torque arm** – This is a self-supporting arm that can hold the position where you can position the screen and is constantly under tension
- **TAP** – Same as CLICK (With one finger, a quick click on the screen)
- **DOUBLE TAP** – Use one finger to quickly double tap on the screen
- **TRIPLE TAP** – Use one finger to quickly triple tap on the screen

1. Patriot® and Magnifying America® are registered trademarks of Low VisionAids, Inc.
2. Patriot Vision Industries, LLC. is an affiliate manufacturer for Low VisionAids, Inc.
3. Google® is a registered trademark of Google, Inc.
4. Play Store® and YouTube® are registered trademarks of Google, Inc.
5. Samsung® is a registered trademark of Samsung, Inc.
6. This manual is © Copyright 2021. All rights reserved. Duplication in part or in whole is strictly prohibited. It is a violation of federal trademark regulations to copy or use without the express written permission of the trademark/copyright owner.

All rights reserved.

#### For further information

Patriot Vision Industries, LLC. 2125 SW Highway 484 Ocala, FL 34473 1-800-364-1110

Fax 1-352-307-6614


[www.patriotvisionindustries.com](http://www.patriotvisionindustries.com)

Email: [info@patriotvisionindustries.com](mailto:info@patriotvisionindustries.com)

Dealer Inquiries Welcome

---

## Documents / Resources

 <p>Patriot® VRM12 Viewer/Reader/Multi-Media System</p> <p>User Manual 1-800-364-1608</p>	<p><a href="#">Patriot VRM12 Viewer Reader Multi Media System</a> [pdf] User Manual VRM12 Viewer Reader Multi Media System, VRM12, Viewer Reader Multi Media System, Reader Multi Media System, Multi Media System, Media System</p>
--	--

## References

-  [Home - Patriot Vision Industries, LLC](#)