



Pathway PWREP Wall-Mount 12-Port DMX Repeater Instructions

[Home](#) » [Pathway](#) » Pathway PWREP Wall-Mount 12-Port DMX Repeater Instructions 

Contents

- [1 Pathway PWREP Wall-Mount 12-Port DMX Repeater](#)
- [2 OVERVIEW](#)
- [3 FEATURES](#)
- [4 ORDERING INFORMATION](#)
- [5 SPECIFICATIONS](#)
- [6 PART NUMBER CROSS-REFERENCE](#)
- [7 WIRING](#)
- [8 DIMENSIONS](#)
- [9 APPLICATION RISER](#)
- [10 WARRANTY](#)
- [11 Documents / Resources](#)
 - [11.1 References](#)
- [12 Related Posts](#)



Pathway PWREP Wall-Mount 12-Port DMX Repeater



OVERVIEW

The Pathway DMX Repeater series of opto-splitters are an essential component of DMX distribution systems, permitting star-wiring configurations while isolating and protecting equipment from electrical faults. Choose from 4, 8, 12 or 16 Output Port models, DMX-Only, all internally pre-wired in small or medium-sized enclosures are ready for installation.

The RDM model, available in 4, 8 or 12 Ports, supports the bi-directional communication standard E1.20 Remote Device Management (RDM).

The Pathway Wall-mount DMX Repeaters provide the same robust features of our Rack-mount 8 port opto-splitters, in NEMA1 enclosures complete with a power supply and conduit knockouts for fast, easy installation.

FEATURES

- Internally pre-configured and pre-wired, ready for installation
- 4, 8, 12 or 16 Outputs [DMX-Only models]; 4, 8, or 12 Outputs [RDM-Enabled models]
- Up to 4 unique inputs [DMX-Only models]; or 3 inputs [RDM-Enabled models], or daisy-chain a single source
- Removable terminal connectors, with both compression-screw terminal and insulation-displacement contact (IDC) connectors supplied
- No fuses – self-resetting port protection recovers from voltage faults
- 120-277VAC, 50/60Hz power supply
- Direct pass-through and DMX line termination switch [DMX-Only models]
- RDM-compliant non-isolated 5th output port [RDM-Enabled models]
- LED Indicators for Port Activity, Power, DMX Input, and Iso Power
- Also available in Rack-mount form factor (PWREP RM RDMHUB) or as individual DIN units (PWREP DIN)

ORDERING INFORMATION

PWREP				EXAMPLE: PWREP WM P12 TERM RDM MED	
Series	Form Factor	Port Quantity	Port Type	Model	Enclosure
PWREP Pathway DMX Repeater	WM Wall-mount	P41 4 DMX Ports	TERM Compression-Fit Terminal	NONRDM DMX Only	SML 10" x 13" x 4.5" Small DIN Enclosure
		P82 8 DMX Ports		RDM E1.20 RDM Compliant	MED 10" x 23" x 4.5" Medium DIN Enclosure
		P123 12 DMX Ports			
		P163,4 16 DMX Ports			

Notes

1. P4 available with SML size enclosure only.
2. P8 with NONRDM available with SML size enclosure only; P8 with RDM available with MED size enclosure only.
3. P12 and P16 available with MED size enclosure only.
4. P16 available with NONRDM only.

SPECIFICATIONS

Electrical

- **Input Ratings:** 120-277VAC, 50/60Hz
- **Isolation & Fault Protection:**
 - **PWREP WM [xxxx] NONRDM**
1500V isolation from DMX Input to DMX Outputs
250V fault protection on DMX ports
 - **PWREP WM [xxxx] RDM**
3000V isolation between DMX Ports
(1500V isolation from any DMX port and DMX Thru)
250V fault protection on DMX ports
- **Regulatory Compliance:** ETL

Mechanical

- **Dimensions:**
 - **PWREP WM [xxxx] SML**

10" W x 13" H x 4.5" D (254mm W x 330mm H x 114mm D)

- **PWREP WM [xxxx] MED**

10" W x 23" H x 4.5" D (254mm W x 584mm H x 114mm D)

- **Weight:**

- PWREP WM P4 TERM [xxxx] SML 9.4 lbs (4.25 kg)
- PWREP WM P8 TERM NONRDM SML 9.9 lbs (4.5 kg)
- PWREP WM P12 TERM [xxxx] MED 14.3 lbs (6.5 kg)
- PWREP WM P16 TERM NONRDM MED 14.9 lbs (6.75 kg)

Environmental

- **Operating Temperature:** 14°F to 113°F (-10°C to 45°C)
- **Relative Humidity:** 5-95%, non-condensing

General

- **Compliance:**
 - **PWREP WM [xxxx] NONRDM**
ANSI E1.11 DMX512-A R2013
 - **PWREP WM [xxxx] RDM**
ANSI E1.11 DMX512-A R2013
ANSI E1.20 RDM – Remote Device Management

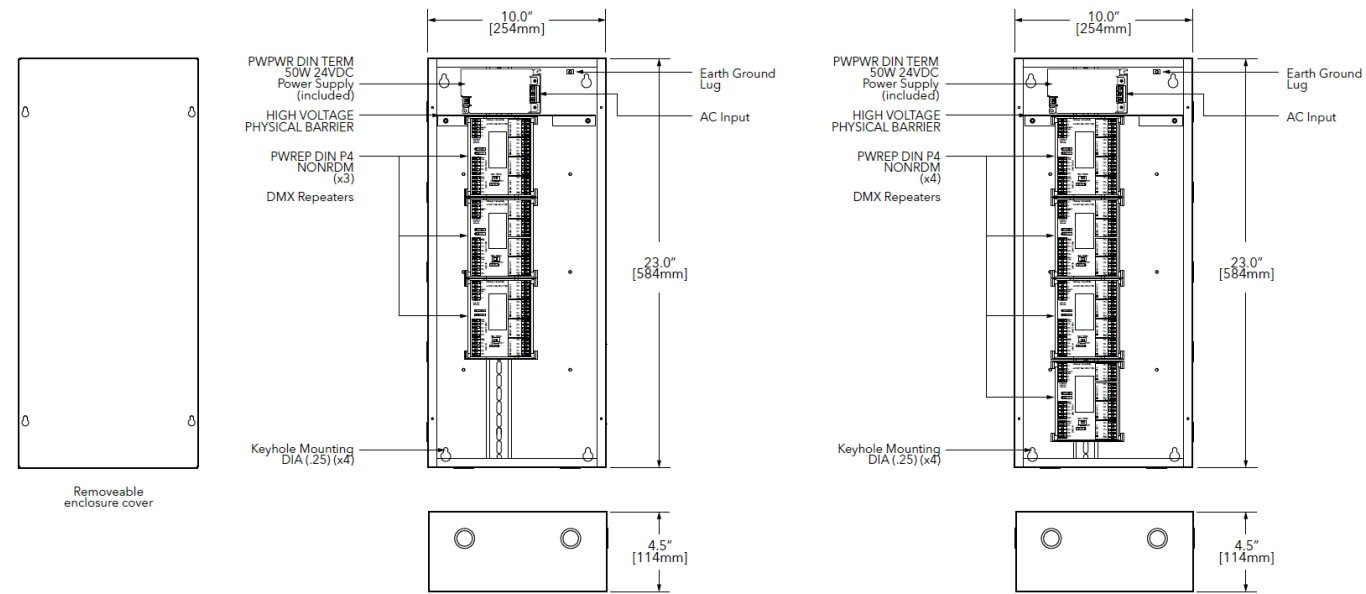
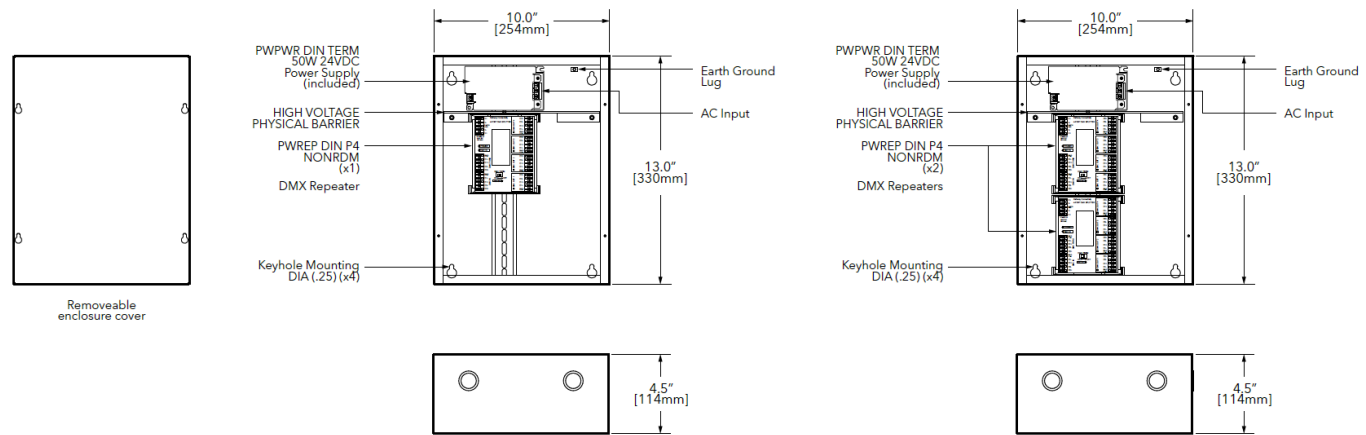
PART NUMBER CROSS-REFERENCE

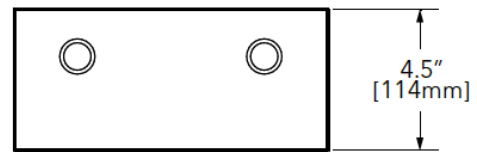
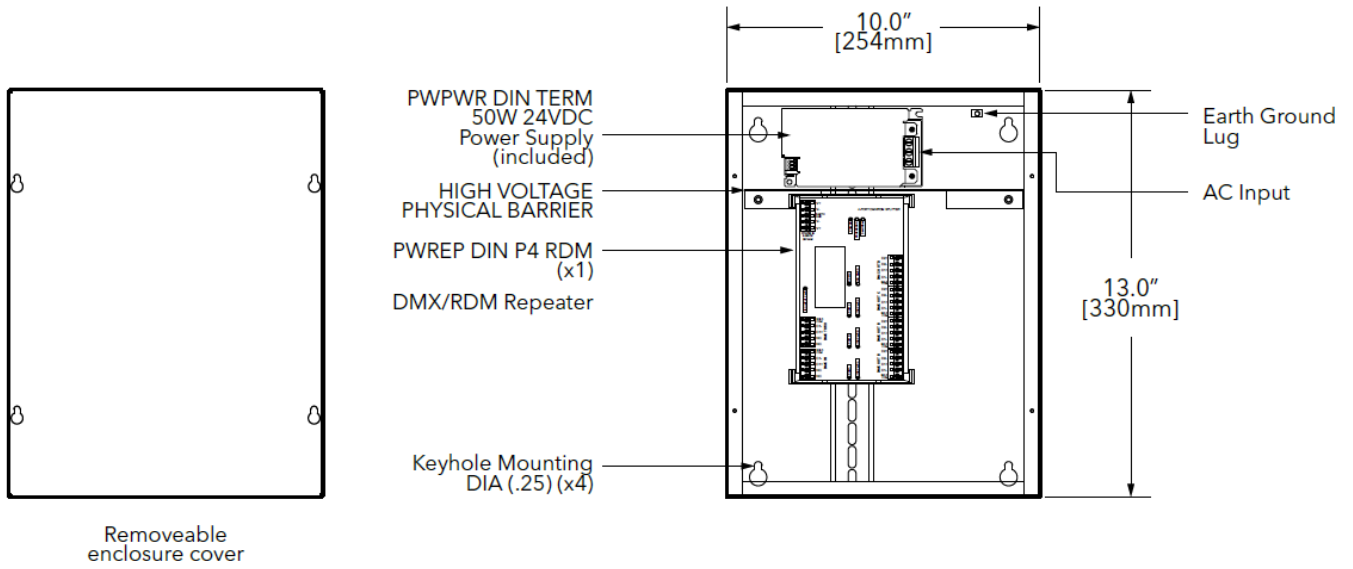
PREVIOUS	NEW	
Part Number	Catalog Number	Description
4807	PWREP WM P4 TERM NONRDM SML PWREP WM P8 TERM NONRDM SML PWREP WM P12 T ERM NONRDM SML PW REP WM P16 TERM NO NRDM SML PWREP W M P4 TERM RDM SML P WREP WM P8 TERM R DM MED	DMX Repeater, Wall-mount, 4-Ports, Compression Fit Terminal, DMX Only, Small 10" x 13" x 4.5" DMX Repeater, Wall-mount, 8-Ports, Compression Fit Terminal, DMX Only, Small 10" x 13" x 4.5" DMX Repeater, Wall-mount, 12-Ports, Compression Fit Terminal, DMX Only, Medium 10" x 23" x 4.5" DMX Repeater, Wall-mount, 16-Ports, Compression Fit Terminal, DMX Only, Medium 10" x 23" x 4.5" DMX Repeater, Wall-mount, 4-Ports, Compression Fit Terminal, E1.20 RDM Compliant, Small 10" x 13" x 4.5" DMX Repeater, Wall-mount, 8-Ports, Compression Fit Terminal, E1.20 RDM Compliant, Medium 10" x 23" x 4.5" DMX Repeater, Wall-mount, 12-Ports, Compression Fit Terminal, E1.20 RDM Compliant, Medium 10" x 23" x 4.5"
4808		
4809		
4810		
4813		
4814		
4815		

WIRING

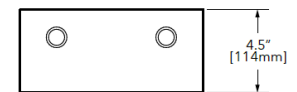
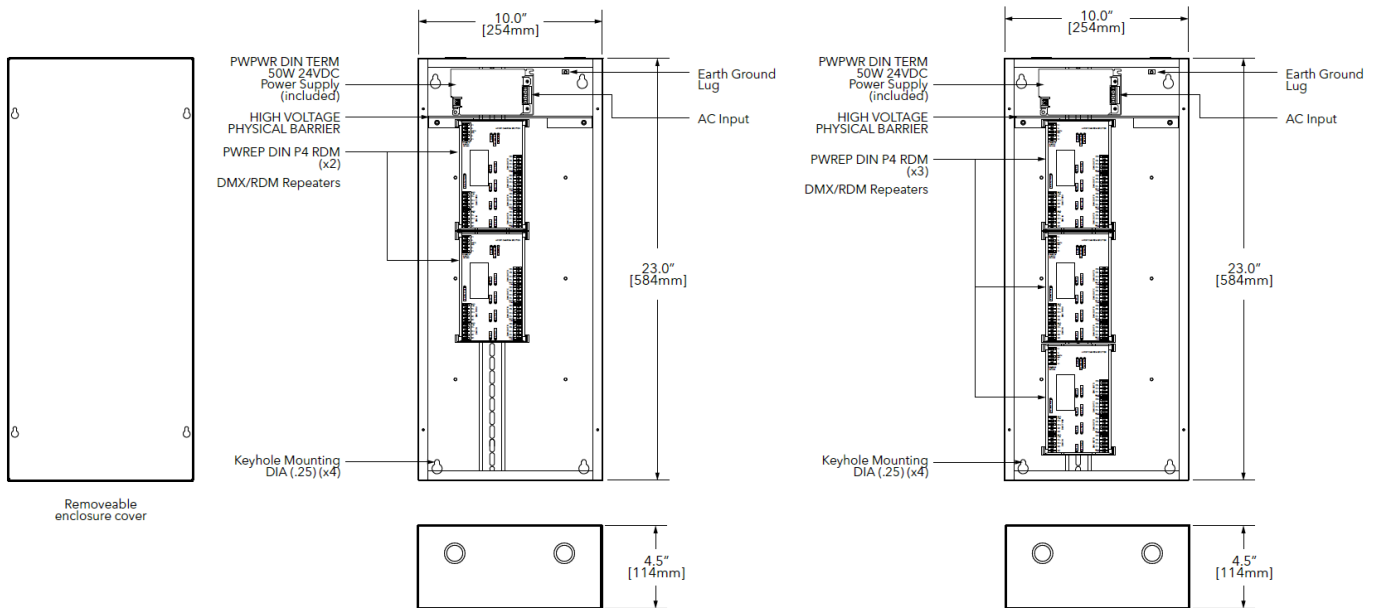
DMX512 / RDM PINOUT		
Purpose	XLR / Terminal Block Pin #	RJ45 PIN # and Wire Color
Shield / Common	1	7 – White / Brown
Data – (complement)	2	2 – Orange
Data + (true)	3	1 – White / Orange
Not Used	4	6 – Green
Not Used	5	3 – White / Green
Not Used – Do Not Connect	N/A	4 – Blue
Not Used – Do Not Connect	N/A	5 – White / Blue
Not Used – Do Not Connect	N/A	8 – Brown

DIMENSIONS

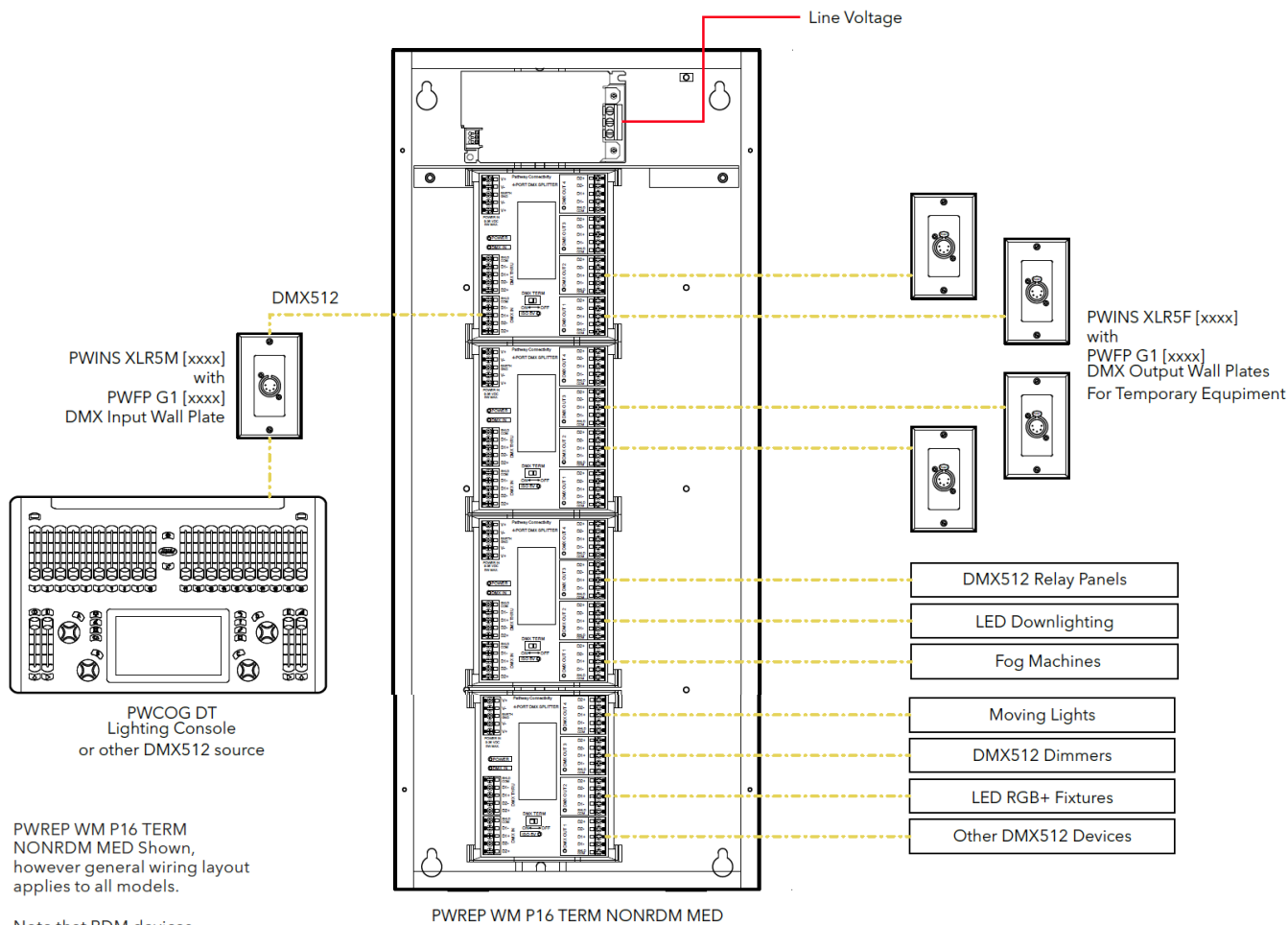




PWREP WM P4 TERM RDM SML



APPLICATION RISER



PWREP WM P16 TERM NONRDM MED Shown, however general wiring layout applies to all models.
Note that RDM devices connected to NONRDM models will not be discoverable and configurable via RDM.

WARRANTY

3-year limited warranty. Complete warranty terms located at: <https://www.acuitybrands.com/support/warranty>

NOTE Actual performance may differ as a result of end-user environment and application. Specifications subject to change without notice.

Acuity Brands | One Lithonia Way, Conyers GA 30012

Phone: + 1 866 617 3074

www.pathwayconnect.com

© 2022 Acuity Brands Lighting, Inc. All Rights Reserved. Rev. 06/22/22

Documents / Resources

	<p>Pathway PWREP Wall-Mount 12-Port DMX Repeater [pdf] Instructions</p> <p>PWREP Wall-Mount 12-Port DMX Repeater, Wall-Mount 12-Port DMX Repeater, 12-Port DMX Repeater, DMX Repeater, Repeater</p>
--	---

References

-  [DMX Lighting & Networking | Pathway Connectivity](#)
-  [Warranty](#)

Manuals+.