



# PATCHING PANDA Operat Kit User Guide

[Home](#) » [PATCHING PANDA](#) » PATCHING PANDA Operat Kit User Guide 



PANDA Operat Kit  
User Guide



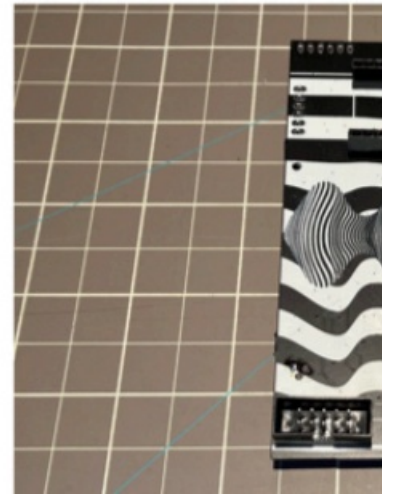
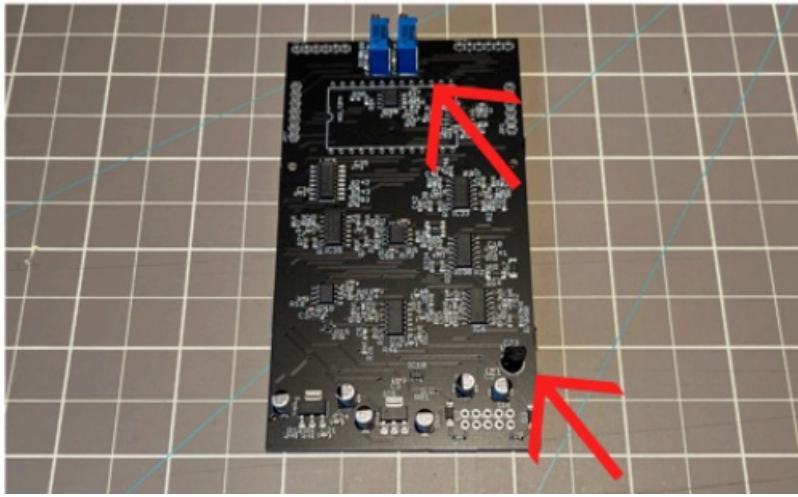
## Contents

1 [Operat Kit](#)

2 [Documents / Resources](#)

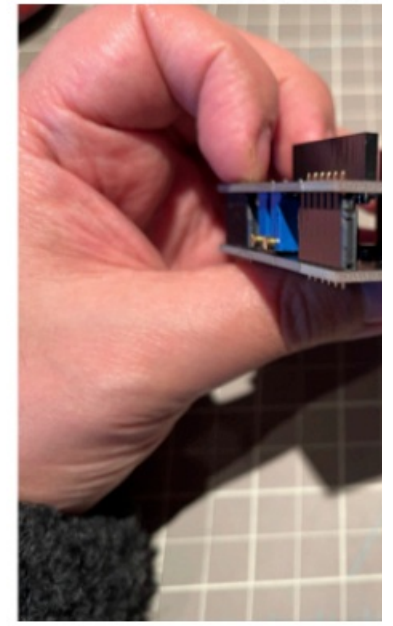
## Operat Kit

FOLLOW THIS STEPS FOR BUILDING THIS KIT



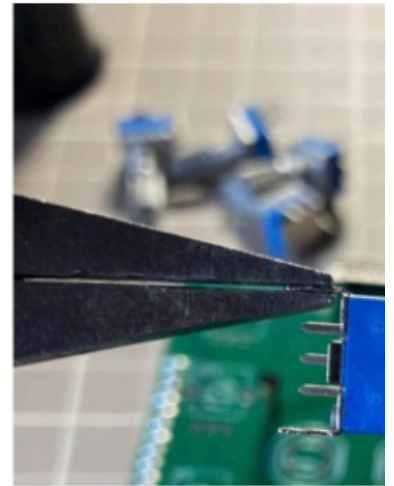
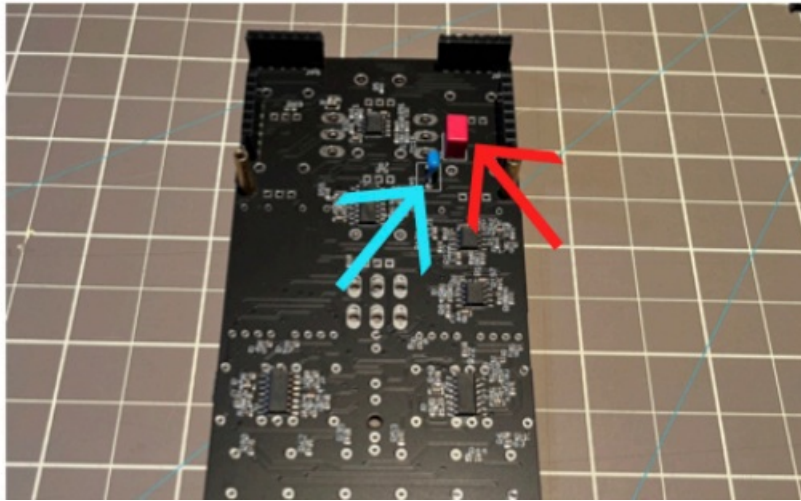
1. Solder both trimmers and the -5V regulator.

2. Solder the power connector and the female soc PCB as showing in the pie, you can use the mini-f



3. Screw the metal spacers and solder the trimmers as shown in the pie.

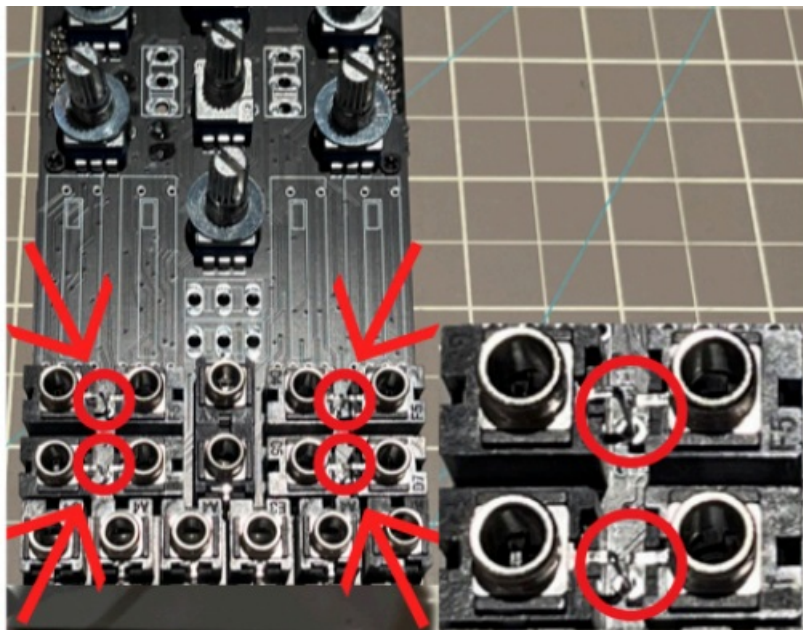
4. Place the female and male sockets Screw the c PCB. Solder the sockets.



5. Solder C1= 3.9nF (red one)  
C45=100nF (blue one).

6. Straighten up the bracket.

NEXT STEPS ARE CRITICAL. FULL CONCENTRATION IS REQUIRED TO AVOID FATAL MISTAKES. BENEFIT FROM 5 MIN BREAK. Please take the time to read the next steps as described. Check buttons polarity, mounting hardware is properly placed and aligned. Do not solder anything until all hardware is correctly attached to the panel, double check everything before soldering. MAKING AN ERROR AT THIS POINT WOULD BE VERY COMPLICATED TO DESOLDER. YOU ARE INFORMED TO AVOID UNPLEASANT SITUATION.



7. Pay attention 8 jacks are sharing the ground leg, you will need to insert both legs where the circles are showing.

8. Place the hardware except for the :  
to easily align the panel. Insert the pa  
to check the hardware is perfectly align  
Remove the panel to place the switch  
this way will be easier.





7. Pay attention 8 jacks are sharing the ground leg, you will need to insert both legs where the circles are showing.

10. Screw the back PCB. Place the mini-PCB as shown respecting the orientation of the silkscreen.



11. The trimmer on the right will calibrate C1 and the trimmer on the left C9. Continue with calibration.

COMPLEX GRADE



Documents / Resources



## [PATCHING PANDA Operat Kit](#) [pdf] User Guide

### Operat Kit, Operat