



PATCHING PANDA Kit-Panda-MoonPhase Moon Phase Kit User Manual

[Home](#) » [PATCHING PANDA](#) » PATCHING PANDA Kit-Panda-MoonPhase Moon Phase Kit User Manual 

PATCHING PANDA Kit-Panda-MoonPhase Moon Phase Kit



IMPORTANT: FOLLOW NEXT STEPS TO ASSEMBLY THE MODULE

Contents

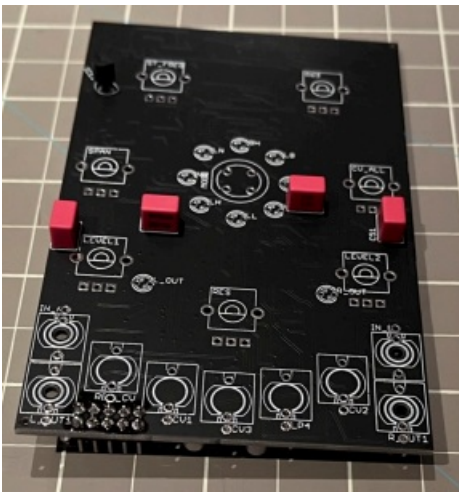
[1 ASSEMBLY THE MODULE](#)

[2 INSTRUCTIONS FOR USE](#)

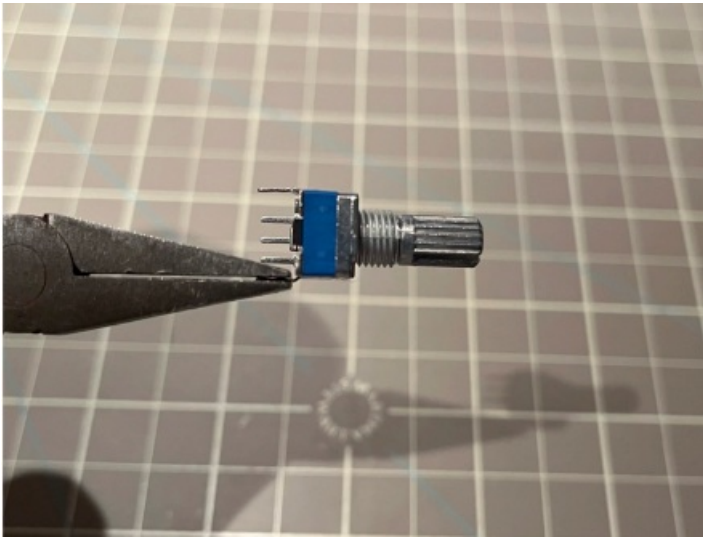
[3 Documents / Resources](#)

ASSEMBLY THE MODULE

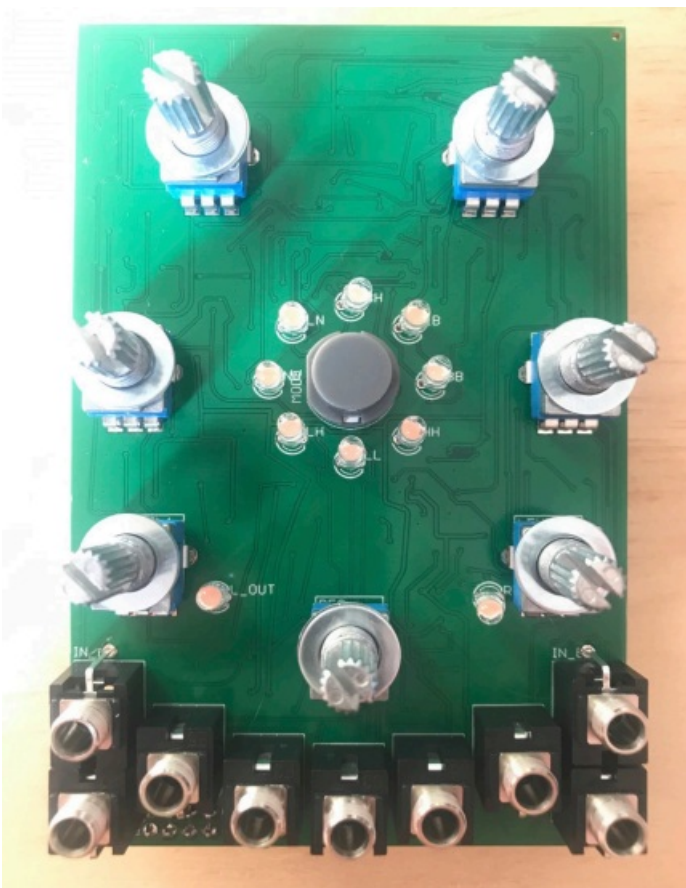
1. Solder the power connector, the 330pF caps and LM337 IC if the SMD from the back is not soldered.



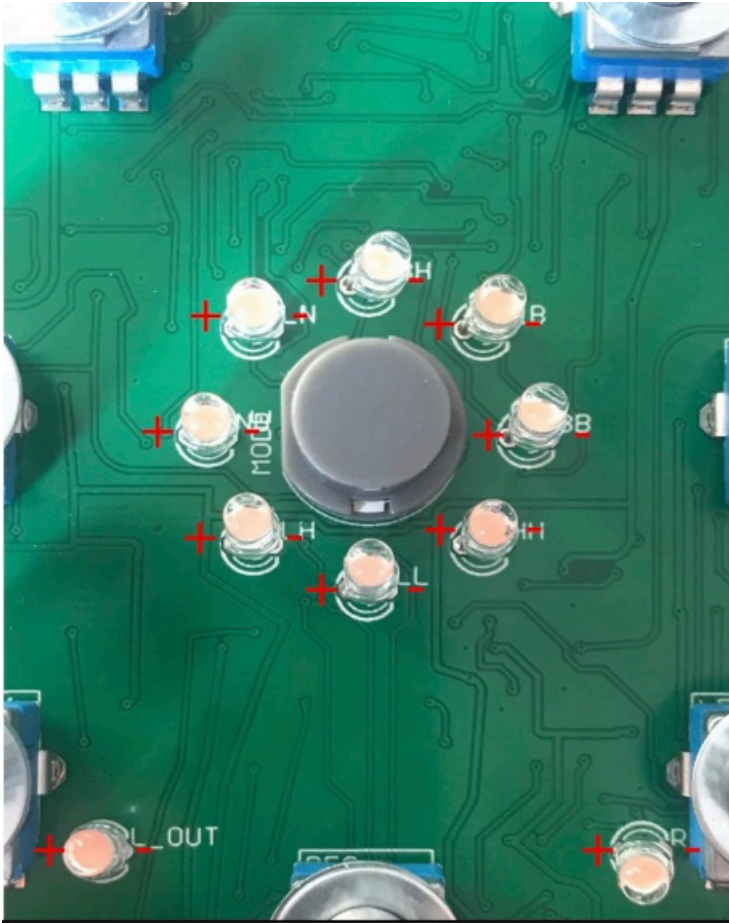
2. Straighten up the bracket.



3. Place jacks, pots, 2 washers per pot and THE GRAY BUTTON MUST BE POSITIONED WITH THE FLAT SIDE TO THE LEFT.



4. IMPORTANT BE CAREFUL WITH THE POLARITY OF THE LEDS. THE LONG LEG GOES TO THE POSITIVE.



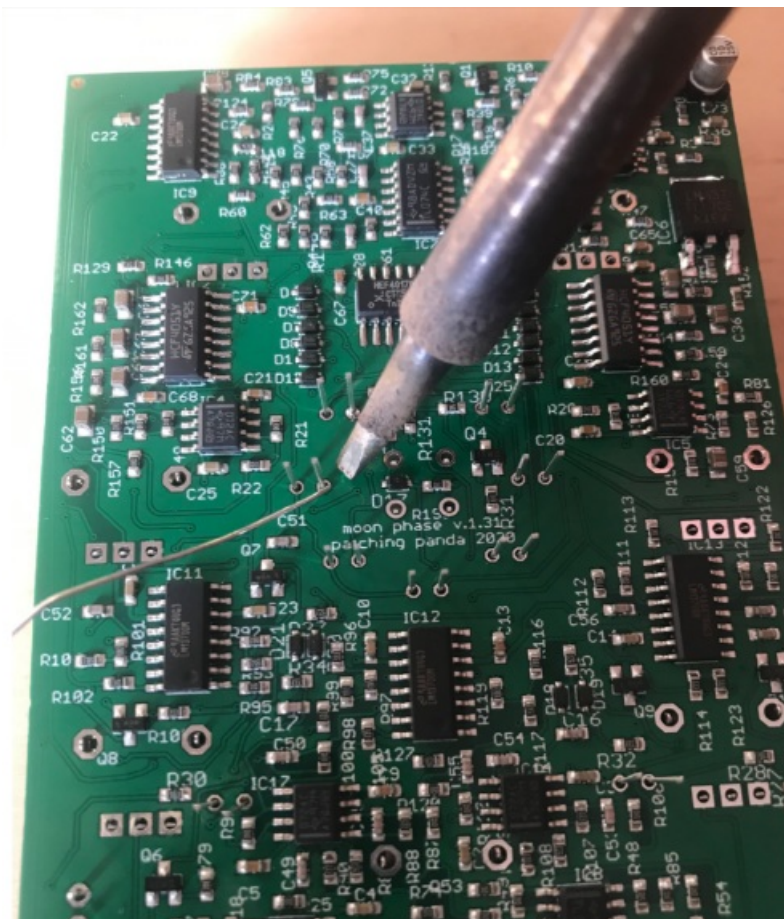
5. Place the front panel and screw it.

This ensures that the hardware is placed in the right position and will sit at the correct height.

With the front panel attached, flip the board over to solder.

INSTRUCTIONS FOR USE

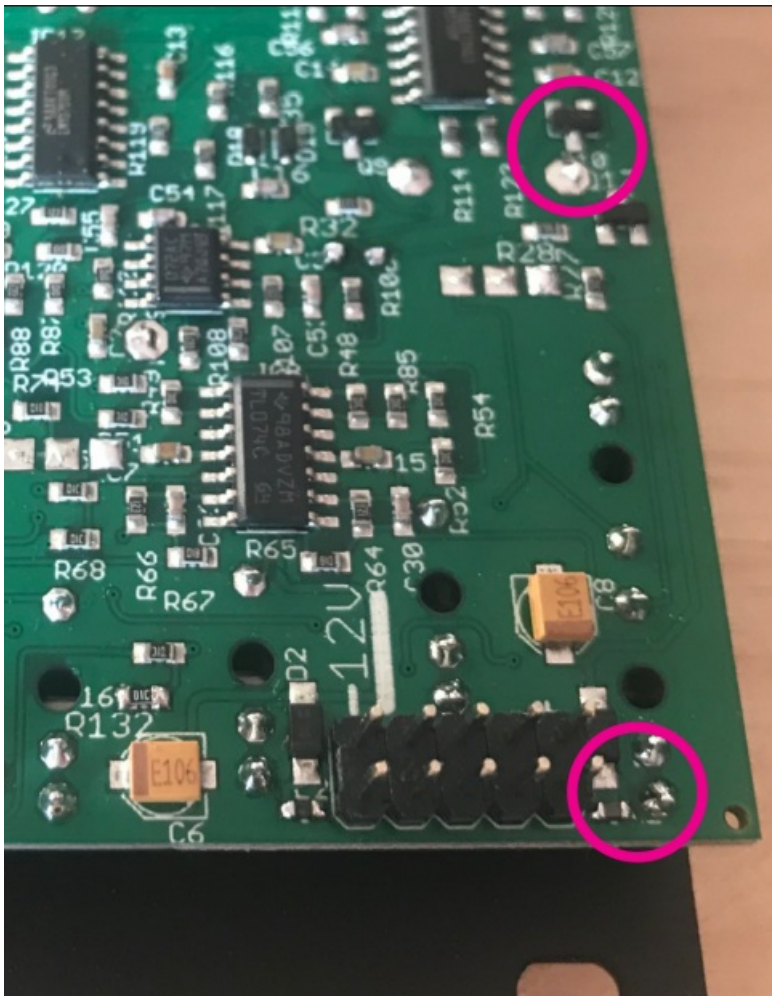
1. IMPORTANT, DON'T SPEND MORE THAN 2 SECS HEATING OTHERWISE THE LED'S CAN BE DAMAGED.
ALL LED'S HAVE BEEN TESTED!



2. Put some paper tape, solder one leg and check if it's aligned to solder it. Continue with the rest of the soldering.



3. When you finish soldering check if you accidentally soldered some pads with components near each other like those circled in the picture.




4. Insert the knobs and tide the big ones with the allen key.



5. YOU ARE DONE.

CHECK THE USER MANUAL AT WWW.PATCHINGPANDA.COM THANK YOU!

Documents / Resources

	<p>PATCHING PANDA Kit-Panda-MoonPhase Moon Phase Kit [pdf] User Manual</p> <p>Kit-Panda-MoonPhase Moon Phase Kit, Kit-Panda-MoonPhase, Moon Phase Kit, Phase Kit</p>
---	--