



PASSTECH FX300WR RFID Locker Lock User Guide

[Home](#) » [Passtech](#) » PASSTECH FX300WR RFID Locker Lock User Guide 

Contents

- 1 PASSTECH FX300WR RFID Locker Lock
- 2 Product Usage Instructions
- 3 Operating cards
- 4 Types of Lock Operating Scenario
- 5 Free Selection (Shared Use)
- 6 Lock Operation
- 7 Free Selection Mode
- 8 Card Operation
- 9 User Card
- 10 Maintenance card
- 11 Indication Instruction
- 12 Specification
- 13 Trouble Shooting
- 14 FCC Statement
- 15 FAQ
- 16 Documents / Resources
 - 16.1 References



PASSTECH FX300WR RFID Locker Lock



Product Usage Instructions

- SL100WR/FX300WR locker locks are operated by 13.56 MHz RF key cards.
- Detailed instructions on how to operate the lock in various modes such as RF card use, Assigned Mode, Free Selection Mode, Open in Emergency, and Low Battery warning.
- Instructions on using Owner Card, Master Card, User Card, Maintenance card, Audit Trail card, and Lock Info card.
- Explanation of indication instructions for the lock.
- Detailed specifications of the SL100WR/FX300WR Locker Lock.

Understanding SL100WR/FX300WR Locker Lock

- What is SL100WR/FX300WR Locker Locks?
- SL100WR/FX300WR locker locks are the locker locks operated by a 13,56 MHz RF key card.
- SL100WR/FX300WR can work in both offline (standalone) or online mode.
- To set SL100WR/FX300WR as an online system, additional peripherals such as an Access point, a Server, and client software are necessary.

NOTE: Refer Esmart Ultra client user manual for online lock system setup.

Operating cards

Card Name	Description	Card type
Key card	<ul style="list-style-type: none"> • Security Key value to be loaded to locks at scanning. • Then, the locks will accept only the RFID cards which have the same security key value. 	Mifare 1 KB
Setup card	<ul style="list-style-type: none"> • Lock will be programmed with various options at scanning. • Setup card can be set from Lock Installation Software (LIS). 	
Master I card	<ul style="list-style-type: none"> • All locks will be open at scanning. • User card registration in the lock will be deleted and the lock will be ready to accept a new user card. 	
Master II card	<ul style="list-style-type: none"> • Locks will be open or closed without User card registration deletion. • Useful when a user needs to open the lock temporarily. 	
Owner card	<ul style="list-style-type: none"> • Master cards registration to be deleted at scanning this card on locks. • After Owner card scanning on lock, scan new master cards to register to the lock. 	
Maintenance card	<ul style="list-style-type: none"> • Lock to be programmed with various options at scanning as you set. • Time, Master cards registration, etc, can be updated without changing lock ID. 	
Audit trail card	<ul style="list-style-type: none"> • Latest 150 event history to be collected at scanning. • Card number, event type (open & close), time of event, user name, etc, to be collected. 	Mifare 4 KB
Lock info card	<ul style="list-style-type: none"> • Various information of the lock can be collected into this card. • One Lock info card can collect information from up to 100 locks. • Lock ID, Operation mode, Battery status, software version, time, auto opening and more to be collected. 	

Types of Lock Operating Scenario

- SL100WR/FX300WR locker locks are designed to work for the various operation requirements by a simple setup process.
- Following operation modes can be programmed before or after lock installation.

Free Selection (Shared Use)

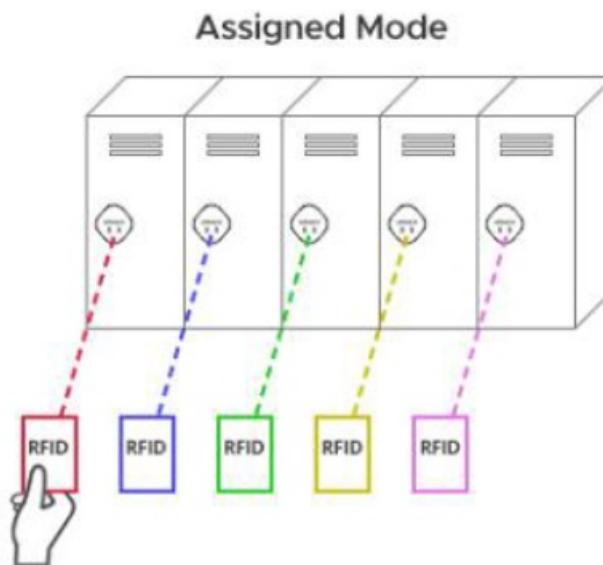
- User card is not assigned to any certain lock, but the User is free to select any empty locker to occupy.

- Programmable to make LED lamp blink to represent the locker is in use. (In-use lamp)
- Programmable to use multiple lockers (up to 5) with one User card. (Multi-lock)
- Programmable for Time-based operation.



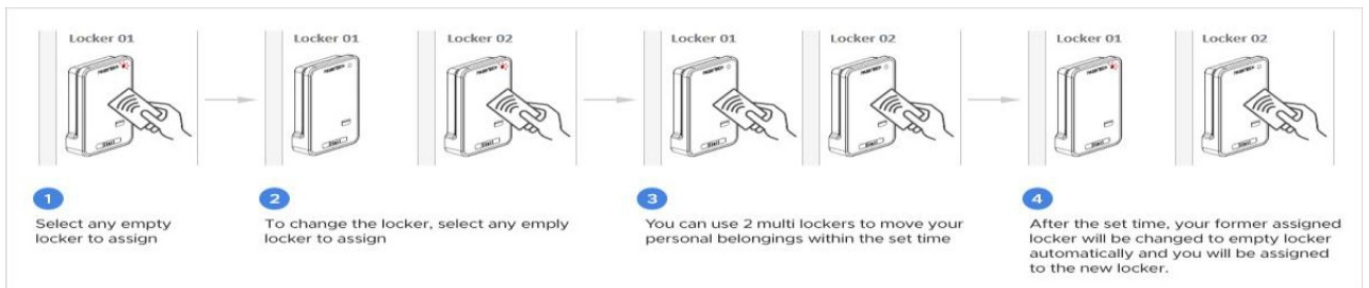
Assigned Mode (Permanent Use)

- Each locker is assigned to each User card in advance.
- Programmable to use multiple lockers (up to 5) with one User card. (Multi-lock)
- Also, programmable for multiple user cards (up to 8) to one locker. (Multi-user)



Smart Assign mode (Shared or permanent use)

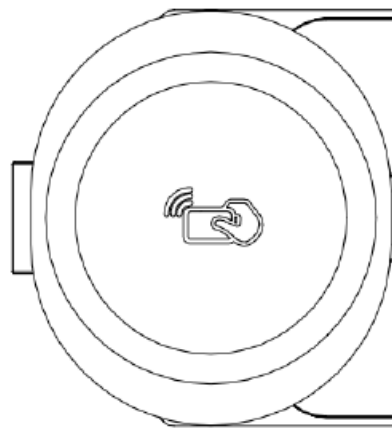
- The user can select any empty locker and the user is assigned to the chosen locker.
- Without the help of an administrator, a user can freely change the assigned locker to any empty locker.
- Programmable to make LED lamp blink to represent locker in use.
- Programmable to set a specific time to release the assigned locker to empty the locker after changing the locker.



Lock Operation

RF card use

- RF card only mode accepts only RF card.



SL100WR



FX300WR

Assigned Mode

Open & Close by RF card key

1. When the Master Card I is used, the lock is available for a new user registration on the locks. (This will remove the previous user on locks) Then use the user card to use.
2. Touch the lock + Put User card on the lock. (Open)

Open & Close by smartphone

How it works

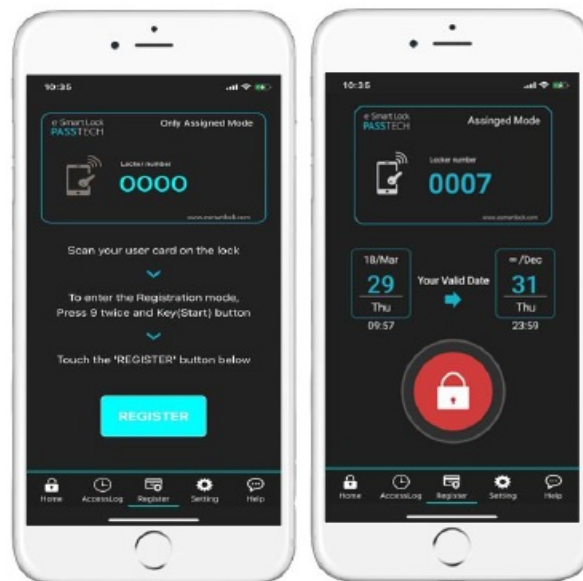
- Visitor receives RFID user card at the front desk and goes to the locker assigned to this card.
- Then he downloads Passtech Mobile App from Google Play Store and installs it into his smartphone, and then wakes up the lock with the user card and registers himself directly into the mobile App.
- From that time on, the lock can be operated through a smartphone.
- Mobile access key expires as soon as the user's card is no longer valid.
- Thus, the smartphone is fully synchronized with the RF user card.

Setting up the lock and user card issue

- Since BLE mobile access key is fully synchronized with RF user card, the first step is to set up the locker lock with a set up card in Assigned mode and issue the user card and assign it to the locker.
- To do so, please refer to the Lock Management System User Guide Ver. 5.0.

Registration via Mobile App

- Run the mobile App. If you are not registered yet, the registration page will show up right after you start the mobile application.
- Otherwise, press the “REGISTER” button from the Menu bar at the bottom for a new registration.



- To register via the Mobile App, follow the instructions that will appear on your mobile device screen. The instructions are like following:
- Scan your user card on the lock.
- To enter registration mode, put number [99+key(start)] on the lock (the registration mode is on when the lock's LED is blinking)
- Touch the “Register” button below.

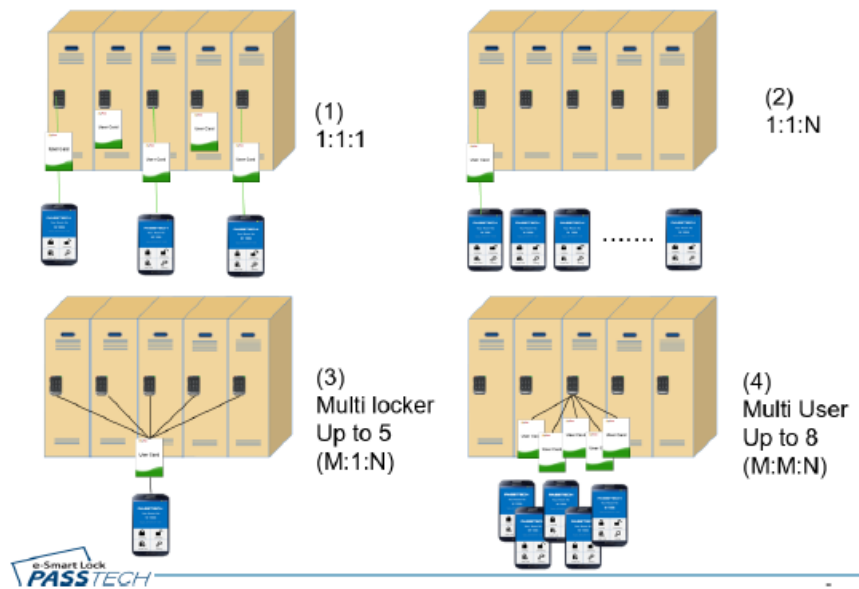
Now, when registration is done, your mobile key in your smartphone is fully synchronised with the user card and ready to operate the lock. It means that the information from the user card corresponds with that of the mobile key, including the validity period. Thus, the information about the valid date will automatically appear on the mobile device screen.

The registration is a one-time process, so you don't need to do it more than once for one locker.

To open the locker, press the “Touch to Open” button on your mobile device monitor.

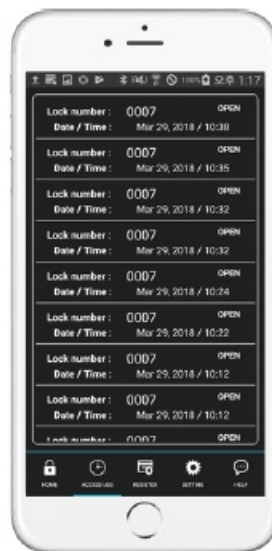
Multi-user and multi-locker

There are four operation scenarios for BLE mobile access locking solution. An unlimited number of mobile devices can be assigned to one locker by syncing up with a card, but one mobile device can have only one card assigned, whereas one phone can operate up to 5 locker locks at the same time if its RF card has 5 locks assigned.



Access Log

- To check the history of the mobile access key, visit the “Access Log” panel in the Menu window.



Free Selection Mode

Open & Close by RF card key

1. Touch the lock + Put User card on the lock.



Open & Close by Smartphone

How it works



1. Download the Passtech Mobile App from the Google Play Store and install it on his smartphone
2. After running the App, choose 'Free mode' on the settings ab.
3. Then, you can freely choose any available lock to operate.

NOTE: To access your mobile device, please set your lock for CSN Free mode and change the usage mode to Free mode from the Passtech APP from your mobile device.

Open in Emergency

1. In case the User forgets his(her) password or loses the card, the Operator can open the lock by Master Card I.
2. Once Master card I is used to open the lock, the lock reverts to the default position (i.e. the lock will stay open for Free Selection)
3. User Card ID will be erased from the lock if Master Card ID has the function to delete the User ID.
4. When the lock stops working due to low battery, the lock can be opened by an external emergency battery pack.



Low Battery warning and battery change

- The RFID lock uses 4 pieces of 1.5V AA alkaline batteries (6V).

When the battery reaches low voltage

1. Beep sounds five times.
2. Red LED lights
3. Low battery is recorded in the memory of the User Card (Operator can know the low battery of the lock when the card is read at the operator's Program

Changing battery

1. Open the battery case at the main case.
2. Replace with new batteries.
3. When you replace batteries, do not mix the brands of them and use only brand new batteries.
4. When you pull out the battery, and if you do not insert the batteries in 3 minutes, the clock of the lock returns to the default time.(1st. Jan, 2010)
5. Please use the Maintenance card to set the time of the lock.
(For setting of Maintenance card, please refer to LOS (Locker Operation System) User Manual or the Esmart ultra client user manual.

CAUTION

RISK OF EXPLOSION IF BATTERY IS REPLACED BY AN INCORRECT TYPE.

Card Operation

Owner Card

The role of the Owner card is to delete the Master card registration. Therefore, the Owner card will be used to delete the current master card registration in the lock, and make the lock ready to register a new Master Card. It is simple to delete the Master card registration and to register a new master card in the lock.

1. Put the Owner card to the lock until the lock sounds a beep (one time) and the red lamp lights.
2. Now, all Master card registration is deleted from the lock.
3. After the Owner card is scanned, put the new master cards to register to the lock

Master Card

Functions of the Master Card I & II

1. There are two types of Master cards.
 - Master card I: Alarm Off, Locker open and User card deletion.
Useful card at user card lost.
After Master, I scanned on a lock, the lock is ready to accept a new user card.
 - Master Card II: Alarm Off and Locker open and close.
Useful card for temporary lock open or close.
Previous user card is still assigned to the lock.
2. Maximum five Master cards can be registered in a lock.

Replacing old Master cards with New Master cards

- There are two ways to delete the lost Master card and register a new Master card in the lock.

Using Maintenance Card

1. Read the master cards (all Master cards to be used in a lock) to register in each lock at the Maintenance menu in the LOS program (or online client program).
2. Put the Maintenance card to the reader, and download the master card chip numbers to the Card.
3. Put the Maintenance card to the locks, then, new Master cards will be registered to the lock, and a lost master card will be blocked.

Using Owner Card

1. Delete the old master card registrations in the lock (refer to the 4.1) with the Owner Card.
2. Put new master cards to each lock to register new master cards. Then, the old master card you lost will not be used.

All existing Master cards need to be registered again, together with the new Master card, because all master card registrations were deleted if the Owner card is used.

User Card

Free Selection (Shared Use)

- The initial status of the lock in Free Selection mode is open (Latch is inside).

Initial Use

1. Select the empty locker.
2. Put your belongings in the locker.
3. Press "Start" button on the front body of the lock to wake up the lock, and place your card (or any form of user key) to the front body of the lock.
4. Wait until the Green LED lights and Beep sounds once.
5. Bolt will move out, and the lock is closed.
6. Close the door, and the lock will remain locked.

Open the lock

1. Press "Start" button on the front body of the lock.
2. Put your card close to the front body of the lock.
3. Lock will check the lock ID and key of the user card (or any form of user key).
4. Lock will emit Green LED and beep sound once it is the right user card.
5. Bolt will be moved and the locker will open.
6. User information will be erased from the lock so that a new user can use the empty lock.

In free selection mode, lock and card need to read and write each other's information. So please do not sway the card until the latch is moved.

Assigned Mode (Permanent Use)

The initial status of the lock in Assigned Mode is the closed status (bolt out)

1. Press "Start" button on the front body of the lock.
2. Put the User Card to the front body of the assigned lock.
3. Lock checks the card, and green LED lights and beep sound once. Then, the lock will be opened, and closed again in 5 seconds.
4. To close the locker, just close the door. Lock will remain in the closed status.

Replacing old User card with New User card **Free Selection**

1. Issue new user card by the LOS (Locker Operation System) program.
2. In case the locker is closed, put the Master Card to the lock to open the lock.
3. Put the new User card to the lock, then the lock will accept the new User card, and a missing card will not be accepted.
4. In case the locker is opened, just put the new user card to the lock, and the lock will register this locker number.

Old User key will not be accepted.

Assigned Mode

1. Issue new User card (with assigned locker Number) for the Assigned mode.
2. Put the Master Card to the lock to delete the old user card, and put the new User card to the lock.
3. Lock will accept the new user card only, and the old user card registration will be deleted.
4. In case the lock is set for multiple users, the lock revision should be updated when a new user card is issued by the LOS program. Then, Lock updates it's revision number when a new user card is scanned. The other user cards, which are assigned to this locker, also need to be reissued with updated lock revision by the LOS program.

Maintenance card

1. Program Maintenance card as you want from LOS (or online client software)
2. Put the Maintenance card to each lock, the lock will be set as you programmed in step ①
3. Time of the lock, Master cards change, Wireless online channel, Auto status update time can be updated with Maintenance card.

Audit Trail card

1. Put Audit Trail Card to the lock.
2. The latest event data (up to 18 events) will be downloaded from the lock to the Card. Wait until melody is on.
3. Read the Card at the LOS program, and 18 event data will be saved to the PC.

NOTE: For further information about all system cards and how to issue, refer to LMS / LOS or Esmart ultra client manual.

Indication Instruction

1. Open/Close: GREEN LED on for 0.2 second, one beep sound for 0.2 second.
2. Successful programming: Melody
3. Indicate for mistake: RED LED flashes 3 times, 3 beep sounds
4. Low voltage: RED LED blinks 5 times, and beep sounds 5 times.
5. When the input is incomplete, after 5 seconds, see #5, power off.
You need to touch it again to wake up the lock.

Specification

Item	Spec
Material	Stainless Steel
Communication	2.4Ghz Wireless(Wireless Communication) BLE(Mobile Key)
Security	AES128
Door open	Mobile Key, RFID CARD, Wireless Control
Power Supply	AA*4 6VDC(Alkaline) Battery DC 12V
RFID	Mifare Classic & Desfire at default, ISO14443 Type A
Indicator	Buzzer, Red/Green LED
Dimension	53.5mm * 68.6mm
Operation TEMP	0 °C ~ 50 °C
Battery life	1.5year(Online) 2years(Offline)
Certification	CE, FCC, KC

ANNEX A Beep & LED Table

Beep	LED	Description
1 x short beep	1 x Green(2sec)	OK
2 x short beep	1 x Red(2sec)	Operation Error
3 x short beep	1 x Red & Green in turn(2sec)	Time over
Do-Re-Mi Melody	1 x Red & Green in turn(2sec)	Successful Set up / mode change / Time setting
5 x short beep	5 x Red & Green	Low battery
Do-Re-Mi Melody	2 x Red & Green	Successful connection between the front and the back bodies.
1 x short beep	1 x Green	Off the Alarm by Control card
Melody	1 x Green	Successful registration of Owner Card/ Master Card
Melody	1xGreen	Read Clear Card and delete the information of M/U in the memory of the lock.
No Beep	Both Green and Red LED blinks	1) Owner Card is not registered. 2) In case of Shift or Week-day operation mode, Alarm for shift or Time due.
No Beep	Red on/off	Owner card is registered, but the Master card is not registered.
No Beep	Green on/off	Owner & Master card are registered, but User card is not registered in Assigned Mode.

Trouble Shooting

ANNEX B Trouble Shooting

Master card registration in the lock was failed.	<p>1) Master card registration should be followed after deleting the old Master card in the lock by the Owner card.</p> <p>2) Put Master card on the lock before waiting time is out after Owner card.</p>
Cannot open the lock with the Master card	<p>Master card is not registered in the lock.</p> <p>Please register the Master card in the lock.</p>
Cannot open or close the lock by the User card	<p>1. Check the Setting of User card by LOS.</p> <p>(1) Free Selection Mode</p> <p>I Validity / Operation mode / Lock ID / Number of locks this user card can be used.</p> <p>(2) Assigned Mode</p> <p>I Validity / Operation Mode / Lock ID / Number of locks this user card can be used.</p> <p>2. Reset the time of the Lock with Time/Control card change.</p> <p>3. Old User card may be still in the memory of the lock. Erase the card information from the lock by clearing the card, then register the Owner card and the Control Card, then use the User card.</p>
When the "Start" button is pressed, five beep sounds with the Red lamp.	Low battery sign. Please replace the batteries.
Latch does not move, while the Card and lock operate in normally.	Too many goods may press the lock body or door. Push the locker door to make the space for the latch movement.

FCC Statement

This equipment complies with FCC RF radiation exposure limits set forth for an uncontrolled environment. This equipment should be installed and operated with a minimum distance of 20 centimeters between the radiator and your body. This transmitter must not be co-located or operating in conjunction with any other antenna or transmitter. a.Rule Part 15.19(a)(3): This device complies with part 15 of the FCC Rules. Operation is subject to the following two conditions:

1. This device may not cause harmful interference, and
2. this device must accept any interference received, including interference that may cause undesired operation.

Rule Part 15.21:

The user's manual or instruction manual for an intentional or unintentional radiator shall caution the user that changes or modifications not expressly approved by the party responsible for compliance could void the user's authority to operate the equipment.

Note: This equipment has been tested and found to comply with the limits for a Class B digital device, according to part 15 of the FCC Rules.

These limits are designed to provide reasonable protection against harmful interference in a residential installation. This equipment generates, uses and can radiate radio frequency energy and, if not installed and used under the instructions, may cause harmful interference to radio communications. However, there is no guarantee that interference will not occur in a particular installation. Suppose this equipment does cause harmful interference to radio or television reception, which can be determined by turning the equipment off and on. In that case, the user is encouraged to try to correct the interference by one or more of the following measures:

- Reorient or relocate the receiving antenna.
- Increase the separation between the equipment and receiver.
- Connect the equipment into an outlet on a circuit different from that to which the receiver is connected.
- Consult the dealer or an experienced radio/TV technician for help

Regulatory Statement

FCC Part 15.105 statement

This equipment has been tested and found to comply with the limits for a Class B digital device, according to part 15 of the FCC Rules. These limits are designed to provide reasonable protection against harmful interference in a residential installation. This equipment generates, uses and can radiate radio frequency energy and, if not installed and used per the instructions, may cause harmful interference to radio communications. However, there is no guarantee that interference will not occur in a particular installation. Suppose this equipment does cause harmful interference to radio or television reception, which can be determined by turning the equipment off and on. In that case, the user is encouraged to try to correct the interference by one or more of the following measures:

- Reorient or relocate the receiving antenna.
- Increase the separation between the equipment and receiver.
- Connect the equipment into an outlet on a circuit different from that to which the receiver is connected.
- Consult the dealer or an experienced radio/TV technician for help.

Supplier's Declaration of Conformity

47 CFR § 2.1077 Compliance Information

- Responsible Party – Cardcom
- Address: 1301 S. Beach Blvd. Ste-P La Habra, CA 90631
- Tel.: [562-943-6300](tel:562-943-6300)
- E-mail: passtech@esmartlock.com

Thank you for selecting SL100WR/FX300WR RFID locks.



Should you have any questions, please contact your local distributor or our technical support.

FAQ

- **Q: How to replace old User cards with New User cards?**
 - **A:** To replace old User cards with New User cards, follow the steps outlined in section 4.3.3 of the user manual.
- **Q: What should I do in case of a Low Battery warning?**

- **A:** When you receive a Low Battery warning, refer to section 3.5 for instructions on changing the battery.

Documents / Resources

 	<p>PASSTECH FX300WR RFID Locker Lock [pdf] User Guide SL100WR, FX300WR, FX300WR RFID Locker Lock, RFID Locker Lock, Locker Lock</p>
--	---

References

- [User Manual](#)

Manuals+. [Privacy Policy](#)

This website is an independent publication and is neither affiliated with nor endorsed by any of the trademark owners. The "Bluetooth®" word mark and logos are registered trademarks owned by Bluetooth SIG, Inc. The "Wi-Fi®" word mark and logos are registered trademarks owned by the Wi-Fi Alliance. Any use of these marks on this website does not imply any affiliation with or endorsement.