



PASSTECH ER200 RFID Reader User Manual

[Home](#) » [Passtech](#) » PASSTECH ER200 RFID Reader User Manual 

Contents

- [1 PASSTECH ER200 RFID Reader](#)
- [2 Characteristics](#)
- [3 ER200 Parts names](#)
 - [3.1 Setting ER200 Reader](#)
 - [3.2 How to use ER200](#)
 - [3.3 ER200 Specification](#)
- [4 Regulatory Statement](#)
- [5 Documents / Resources](#)
- [6 Related Posts](#)



PASSTECH ER200 RFID Reader



Characteristics

1. SMARTPHONE App

Access through Smartphone Application by BLE communication with ER200.

2. RFID READER

Access through RFID CARD.

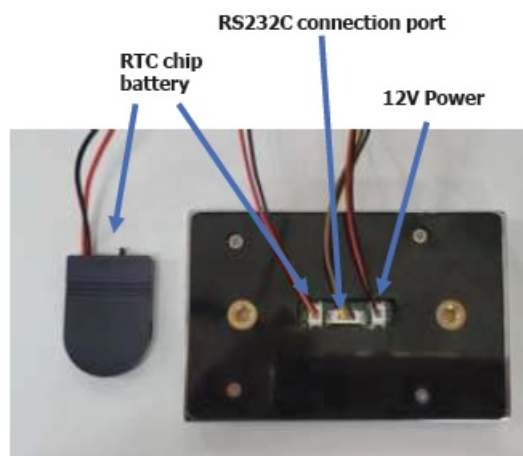
3. RS232C

Data communication between RS232C and accessories.

ER200 Parts names

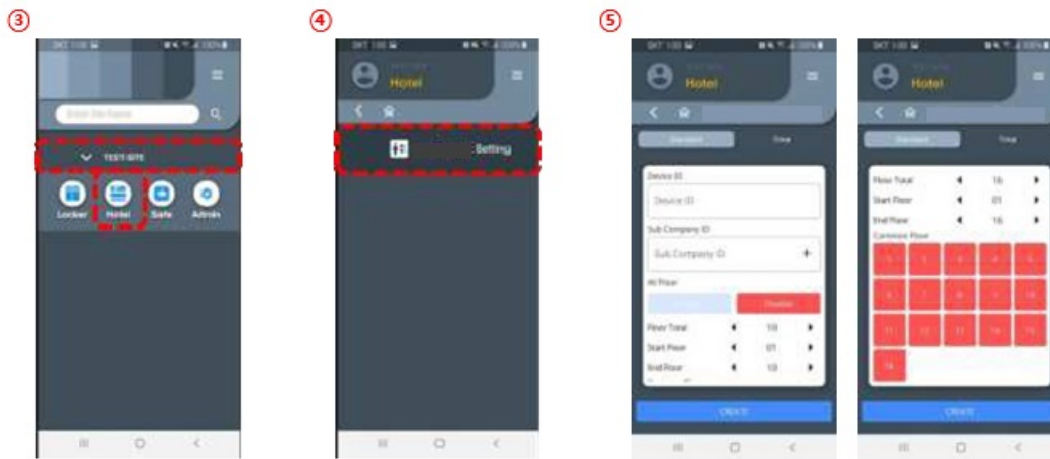


RFID READER (FRONT)



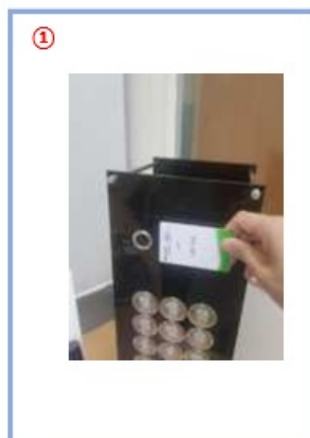
RFID READER (REAR)

Setting ER200 Reader



How to set Reader -Embedded type

1. Select a Device
Select a Hotel
2. Select the Setting
3. Enter required information Device ID = XXXX (4 digit number) Sub Company ID = KEY VENDOR ID (TEST default = 001001)
ALL Floor = Select Enable / Disable Floor Total = Enter the whole floor number
Start Floor = Enter the start floor number
End Floor = Enter the last floor number
Common Floor = Select the common floor



Using RFID

②



Using App (BLE)

How to use Reader -Embedded type

1. Check if the cards (guest card / maintenance card / maid card) that were issued from the client program are working on the reader.
2. Check if the smartphone APP works on the reader by BLE communication.

How to use ER200

	Item	Sound	LED	G	R	R
①	Authentication verified	Tick	Green	•		
②	Invalid (Expired)	Tick Tick Tick	Red		•	
③	Not available	Ti~~~~~ck	Red			•

How to use Reader -Embedded type

1. LED and sound when using available RF card
2. LED and sound when using expired RF card
3. LED and sound when using not available card

ER200 Specification



Item	RFID / Reader
CPU	32-bit ARM® Cortex™-M4
User Credential	RFID card / QR code / App (BLE)
RFID Protocol	ISO 14443A / MIFARE / DESFIRE
Security	AES 128
FW Update	BLE
LED	RGB indicator
Wire communication	RS232C
Material (Color)	Acrylic (Black, White, Transparent, Translucent, etc)
Size	15 X 7 cm
Certificate	KC
Power	DC12V 1.5A (Adapter – optional)
RTC Backup battery	CR2032 1ea
Indicator	Buzzer, LED
Operating Temperature	0 ~ 50°C

Regulatory Statement

The revised User Manual does not contain the FCC required warning statements.

- a. Rule Part 15.19(a)(3): This device complies with part 15 of the FCC Rules. Operation is subject to the following two conditions:
 1. This device may not cause harmful interference, and
 2. This device must accept any interference received, including interference that may cause undesired operation.
- Rule Part 15.21: The users manual or instruction manual for an intentional or unintentional radiator shall caution the user that changes or modifications not expressly approved by the party responsible for compliance could void the user's authority to operate the equipment.

Note: This equipment has been tested and found to comply with the limits for a Class B digital

NOTE: This equipment has been tested and found to comply with the limits for a Class B digital device, pursuant to part 15 of the FCC Rules. These limits are designed to provide reasonable protection against harmful interference in a residential installation. This equipment generates, uses and can radiate radio frequency energy and, if not installed and used in accordance with the instructions, may cause harmful interference to radio communications. However, there is no guarantee that interference will not occur in a particular installation. If this equipment does cause harmful interference to radio or television reception, which can be determined by turning the equipment off and on, the user is encouraged to try to correct the interference by one or more of the following measures:

- Reorient or relocate the receiving antenna.
- Increase the separation between the equipment and receiver.
- Connect the equipment into an outlet on a circuit different from that to which the receiver is connected.
- Consult the dealer or an experienced radio/TV technician for help

Responsible Party –


Cardcom

Address: 1301 S. Beach Blvd. Ste-P La Habra, CA 90631

Tel.: 562-943-6300

E-mail: passtech@esmartlock.com

Documents / Resources

 The icon shows a blue rectangle with the text "ER200 User Manual" and the Passtech logo below it.	PASSTECH ER200 RFID Reader [pdf] User Manual ER200, W6YER200, ER200 RFID Reader, ER200, RFID Reader, Reader
---	--

Manuals+.