

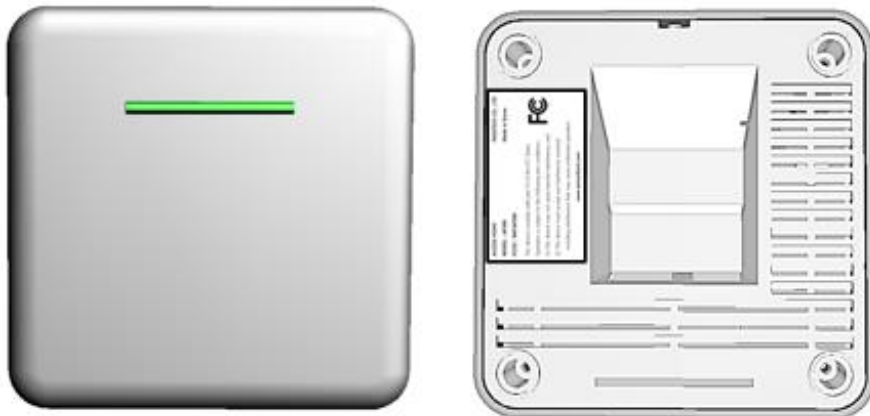


Passtech AP300 Access Point User Guide

[Home](#) » [Passtech](#) » Passtech AP300 Access Point User Guide 



**USER GUIDE
ACCESS POINT
(AP300_Ethernet Setting)**



Passtech Co., Ltd.

Copyright 2017 Passtech Inc. All rights reserved. You are strictly prohibited to copy, disclose, distribute, or use this document in part or as a whole for any purposes other than those for which this document is disclosed. This document is copyrighted and contains confidential information and other intellectual property rights of Passtech Inc. Any unauthorized use, copy, disclosure or distribution constitutes an infringement of Passtech's intellectual property rights.

Passtech Inc. reserves the right to make changes to its applications or services or to discontinue any application or service at any time without notice. Passtech provides customer assistance in various technical areas but does not have full access to data concerning the use and applications of customers' products.

Therefore, Passtech assumes no liability and is not responsible for customer applications or software design or performance relating to systems or applications incorporating Passtech products. In addition, Passtech assumes no liability and is not responsible for the infringement of patents and/or any other intellectual or industrial property rights of third parties, which may result from assistance provided by Passtech.

The composition of the information in this manual has been done to the best of our knowledge. Passtech does not guarantee the correctness and completeness of the details given in this manual and may not be held liable for damages ensuing from incorrect or incomplete information. Since, despite all our efforts, errors may not be completely avoided, we are always grateful for your useful tips.

We have our development center in South Korea to provide technical support. For any technical assistance can contact our technical support team as below;

E-mail: passtech@esmartlock.com

Contents

- 1 Components Preparation
 - 1.1 SETUP Components
 - 1.2 Setting Diagram
- 2 AP Setting
 - 2.1 SERVER & AP300 Communication Diagram
 - 2.2 AP Setting
- 3 Server Setting
 - 3.1 Server pre-setting (DB Connection)
 - 3.2 Server Connection
 - 3.3 Server Startup and Shutdown
- 4 Specification
- 5 Regulatory Statement
- 6 Documents / Resources
- 7 Related Posts

Components Preparation

SETUP Components



DC12V POWER SUPPLY ADAPTOR



RJ11 POWER CABLE (12V)



AP 300



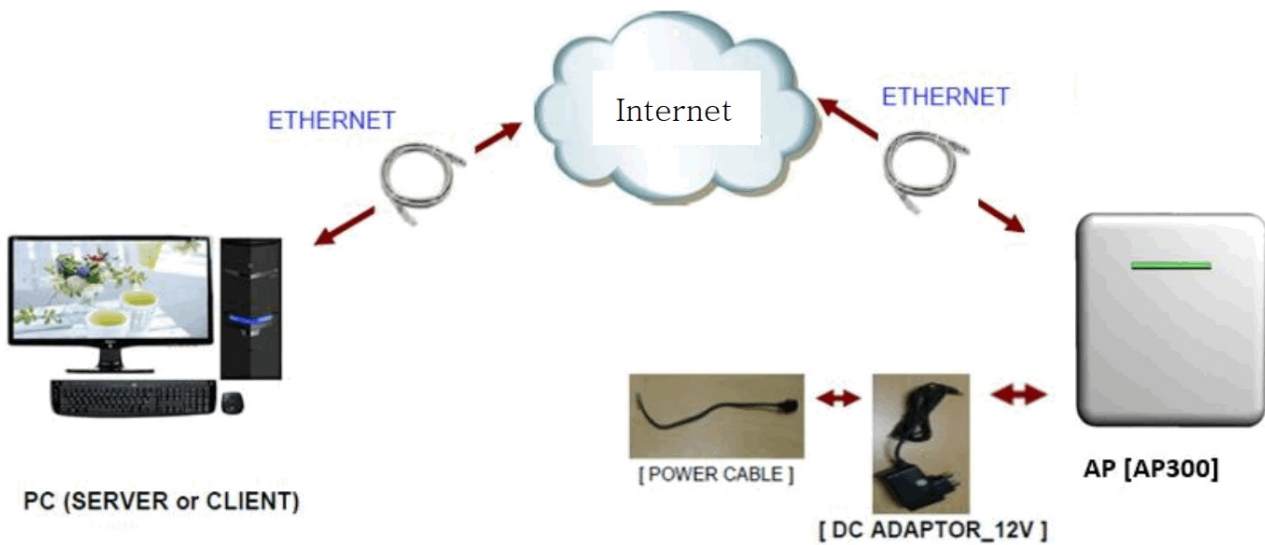
RJ45 LAN CABLE

Setting Diagram



AP Setting

SERVER & AP300 Communication Diagram



AP Setting

Before creating an AP account, please check PC IP and TCP/IP first by running 'Command Prompt' and inputting 'ipconfig' command as below.

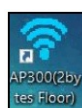
```

Command Prompt
Microsoft Windows [Version 10.0.17763.503]
(c) 2018 Microsoft Corporation. All rights reserved.

C:\Users\WIN10>ipconfig

Windows IP Configuration

Wireless LAN adapter 로컬 영역 연결* 3:
    Media State . . . . . : Media disconnected
    Connection-specific DNS Suffix  . :
Wireless LAN adapter 로컬 영역 연결* 2:
    Media State . . . . . : Media disconnected
    Connection-specific DNS Suffix  . :
Ethernet adapter 이더넷:
    Connection-specific DNS Suffix  . :
    Link-local IPv6 Address . . . . . : fe80::1c6a:de1b:720:3b2f%6
    IPv4 Address. . . . . : 192.168.0.52
    Subnet Mask . . . . . : 255.255.255.0
    Default Gateway . . . . . : 192.168.0.1
Wireless LAN adapter Wi-Fi:
    Media State . . . . . : Media disconnected
    Connection-specific DNS Suffix  . :
  
```



① Open 'AP300(2Bytes Floor)'.

Hotel AP Management(V1.6)

AP MANAGEMENT(HOTEL)

V1.6

ETHERNET SETTING

Version: Mac Addr:

☐ Search Direct IP: 192 168 0 255 0 255

IP Configuration Method: ☐ Static ☐ DHCP

Operation Mode: ☐ Client ☐ Server ☐ Mixed

Local IP: Port:

Subnet:

Gateway:

Server IP: Port:

Serial Configuration: BaudRate:

Data Packing Condition: Time: (0 ~ 65536 sec) Size: (0 ~ 255 Byte)

WIFI SETTING

AP ID: ☐ DHCP ☐ STATIC

IP:

NET MASK:

GATEWAY:

SERVER IP:

SERVER IP: ☐ WEP

SSID:

PASSWORD:

AP SETTING


AP Name: Server1_AP1

RF Channel:

BUILDFLOOR LOCKER RANGE

BUILD: 01 FLOOR: 001

ROOMS: 001 ~ 001



② Click the 'Search' button.

Mac address and IP of connected AP200 will be shown on AP List.

Hotel AP Management(V1.6)

AP MANAGEMENT(HOTEL)

V1.6

ETHERNET SETTING

Version: Mac Addr:

☐ Search Direct IP: 192 168 0 255 0 255

IP Configuration Method: ☐ Static ☐ DHCP

Operation Mode: ☐ Client ☐ Server ☐ Mixed

Local IP: Port:

Subnet:

Gateway:

Server IP: Port:

Serial Configuration: BaudRate:

Data Packing Condition: Time: (0 ~ 65536 sec) Size: (0 ~ 255 Byte)

WIFI SETTING

AP ID: ☐ DHCP ☐ STATIC

IP:

NET MASK:

GATEWAY:

SERVER IP:

SERVER IP: ☐ WEP

SSID:

PASSWORD:

AP SETTING


AP Name: Server1_AP1

RF Channel:

BUILDFLOOR LOCKER RANGE

BUILD: 01 FLOOR: 001

ROOMS: 001 ~ 001



AP LIST

54:10:EC:20:17:59
80:1F:12:70:AA:05
80:1F:12:70:8C:D6
80:1F:12:70:8F:D0
80:1F:12:70:AD:CA
80:1F:12:70:97:A7
80:1F:12:70:A2:BF
80:1F:12:70:5D:1F
80:1F:12:70:87:53
80:1F:12:70:B2:3F
80:1F:12:70:75:AF
80:1F:12:70:8A:F9
80:1F:12:70:76:71

Search OK !! 192.168.0.200
Search OK !! 192.168.0.184
Search OK !! 192.168.0.189
Search OK !! 192.168.0.183
Search OK !! 192.168.0.190
Search OK !! 192.168.0.182
Search OK !! 192.168.0.192
Search OK !! 192.168.0.186
Search OK !! 192.168.0.187
Search OK !! 192.168.0.181
Search OK !! 192.168.0.188
Search OK !! 192.168.0.191
Search OK !! 192.168.0.135

③ Select an AP which you want to configure from the AP list, and input values in 'Ethernet Setting' referring to the description below.

Item	Description
Local IP	AP IP Make sure this IP is only assigned to this AP
Local Port	Assign the port number on your own (Default: 5000)
Subnet	Input the value (Subnet Mask) checked in Command Prompt
Gateway	Input the value (Default Gateway) checked in Command Prompt
Server IP	Input the value (IPv4 Address) checked in Command Prompt
Server Port	Input the port number as set in the Server program (Default 2274)

④ Click the 'Setting' button to save the information to the selected AP and check the message 'Setting OK' from the message box below.

⑤ Select RF Channel and then click the 'Conn' button and check the message 'Connected OK' from the message box.

If it is connected well, the 'WRITE' and 'READ' buttons will be activated.

Hotel AP Management(V1.6)

AP MANAGEMENT(HOTEL)

ETHERNET SETTING

Version: 02.07 Mac Addr: 54:10:EC:20:17:59

☐ Search Direct IP 192 168 0 255 0 255

IP Configuration Method: ☒ Static ☐ DHCP Operation Mode: ☒ Client ☐ Server ☐ Mixed

Local IP: 192 168 0 200 Port: 5000

Subnet: 255 255 255 0

Gateway: 192 168 0 1

Server IP: 192 168 0 52 Port: 2274

Serial Configuration: BaudRate: 230400

Data Packing Condition: Time: 0 (0 ~ 65536 sec) Size: 0 (0 ~ 255 Byte)

AP LIST

54:10:EC:20:17:59
80:1F:12:70:AA:05
80:1F:12:70:8C:D6
80:1F:12:70:8A:F9
80:1F:12:70:A2:BF
80:1F:12:70:AD:CA
80:1F:12:70:97:A7
80:1F:12:70:75:AF
80:1F:12:70:5D:1F
80:1F:12:70:B2:3F
80:1F:12:70:76:71
80:1F:12:70:8F:DD
80:1F:12:70:87:53

WIFI SETTING

AP ID: ☐ DHCP ☐ STATIC

IP:

NET MASK:

GATEWAY:

SERVER IP:

SERVER IP: ☐ WEP

SSID:


PASSWORD:

AP SETTING

AP Name: Server1_AP1

RF Channel: 11

BUILD/FLOOR LOCKER RANGE: BUILD: 01 FLOOR: 001 ROOMS: 001 ~ 050



Search
Setting
CONN
WRITE
READ
CLEAR
EXIT

Setting OK !!

AP setting server start! ==> IP : 192.168.0.52, Port : 2274

Client Connected OK !!!!..... 192.168.0.200

⑥ Click the 'READ' button to check current saved information.

Hotel AP Management(V1.6)

AP MANAGEMENT(HOTEL)

ETHERNET SETTING

Version: 02.07 Mac Addr: 54:10:EC:20:17:59

☐ Search Direct IP 192 168 0 255 0 255

IP Configuration Method: ☒ Static ☐ DHCP Operation Mode: ☒ Client ☐ Server ☐ Mixed

Local IP: 192 168 0 200 Port: 5000

Subnet: 255 255 255 0

Gateway: 192 168 0 1

Server IP: 192 168 0 52 Port: 2274

Serial Configuration: BaudRate: 230400

Data Packing Condition: Time: 0 (0 ~ 65536 sec) Size: 0 (0 ~ 255 Byte)

AP LIST

54:10:EC:20:17:59
80:1F:12:70:AA:05
80:1F:12:70:8C:D6
80:1F:12:70:8A:F9
80:1F:12:70:A2:BF
80:1F:12:70:AD:CA
80:1F:12:70:97:A7
80:1F:12:70:75:AF
80:1F:12:70:5D:1F
80:1F:12:70:B2:3F
80:1F:12:70:76:71
80:1F:12:70:8F:DD
80:1F:12:70:87:53

WIFI SETTING

AP ID: ☐ DHCP ☐ STATIC

IP:

NET MASK:

GATEWAY:

SERVER IP:

SERVER IP: ☐ WEP

SSID:


PASSWORD:

AP SETTING

AP Name: AP1

RF Channel: 23

BUILD/FLOOR LOCKER RANGE: BUILD: 01 FLOOR: 01 ROOMS: 0001 ~ 050



Search
Setting
CONN
WRITE
READ
CLEAR
EXIT

Setting OK !!

AP setting server start! ==> IP : 192.168.0.52, Port : 2274

Client Connected OK !!!!..... 192.168.0.200

R=> 02520378000000000000000000000000

R<= 1f.....AP1.23.01010001.01010050...1x

Configuration Reading OK!!

02/22/2022 2:29:26.41503120:32332C:0031:50313030303120:0031:50303055:00:20:20:0378

⑦ Input values in 'AP Setting' referring to the description below.

Item	Description
AP Name	AP name that will be inputted into AP Account in the Client program Assign AP ID on your own, but do not duplicate Only English alphabet and numbers are available (Any space or special characters cannot be contained)
RF Channel	RF Channels you would like to connect (11~25)
BUILD	Building number (1~50)
FLOOR	Floor number (1~99)
ROOMS	Room numbers (1~999)

⑧ Click the 'WRITE' button to save the information of the selected AP and check the message 'Configuration writing OK' from the message box.

⑨ Click the 'READ' button again to check if the setting values are properly saved.

⑩ If you want to set another AP, follow the steps from ②.

After the setting is completed, click 'EXIT' to close the window.

Click the 'New' button from the AP account window to enter new information.

Input the following items and click the 'Save' button to save the entered information.

Item	Description
AP Name	Input AP Name which you set in AP Settings
Server IP Update Flag	Check to update the information into the Server program automatically
AP IP	Input AP IP address which you set in AP Settings
Server IP	Input IP address of a PC which Server is installed in
Server Port	Input server port (Default: 2274)
Channel	Input RF Channel which you set in AP Settings
Building No.	Select Building number which you set in AP Settings
Group ID	Input Group number which you set in AP Settings
Lock Start	Input Starting Room number of the lock which you set in AP Settings
Lock End	Input Ending Room number of the lock which you set in AP Settings
AP Status	Waiting / Connect OK / Connect Error
AP Layout ID	Select AP Layout ID same as you set in Custom Layout

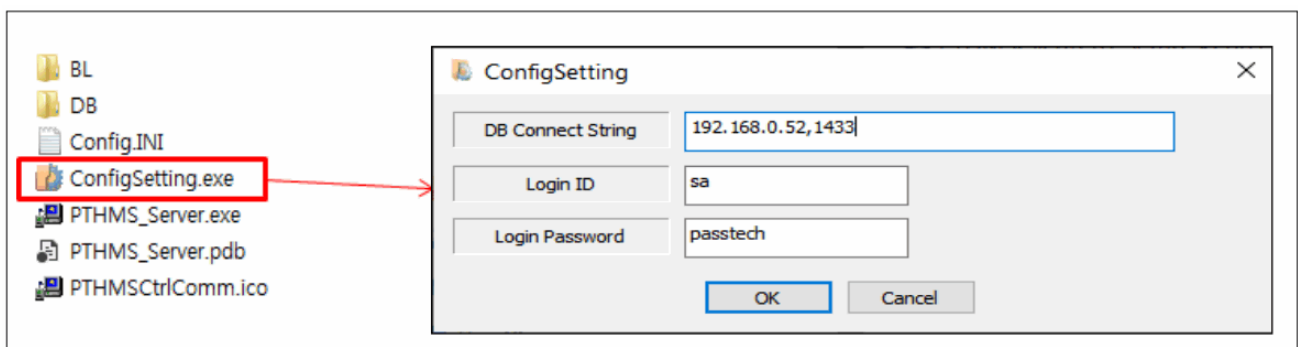
If you want to update the information, select the AP account from the list and click the 'Update' button to activate the input boxes. Input the updated information and click the 'Save' button to update.

If you want to delete the information, select the AP account from the list and click the 'Delete' button to delete.

Server Setting

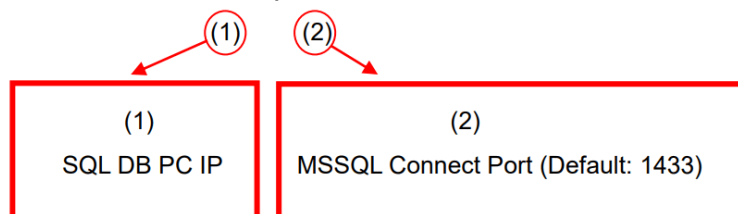
Server pre-setting (DB Connection)

① Change the environmental files for the DB connection before executing the communication Server Program. Run "ConfigSetting.exe" in the folder where the program is installed.

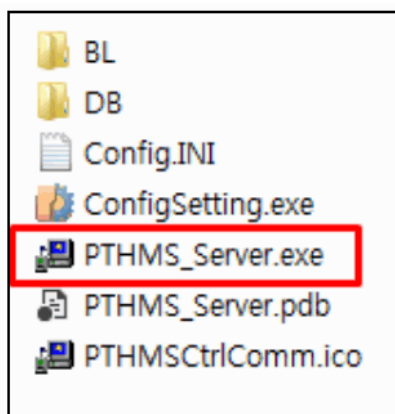


② Input the Connect information to connect DB.

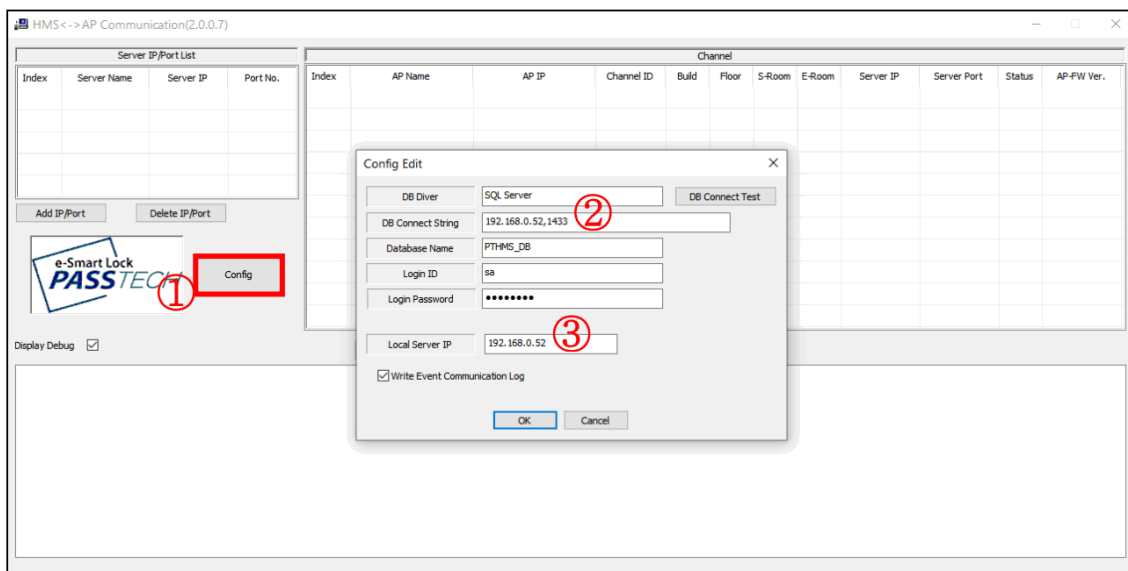
Ex) 192.168.0.52,1433



③ Run the Server Program (PTHMS_Server.exe).

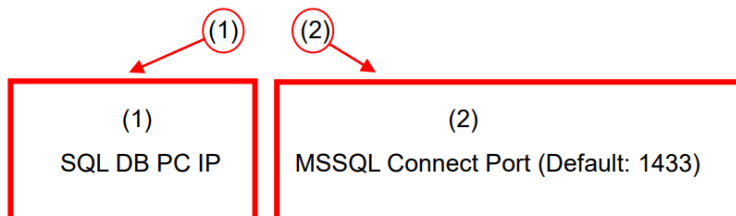


④ Click “Config” and put information as below;



→ Put information the same as the one you put for the config setting above. (Local Server IP will be your PC IP)

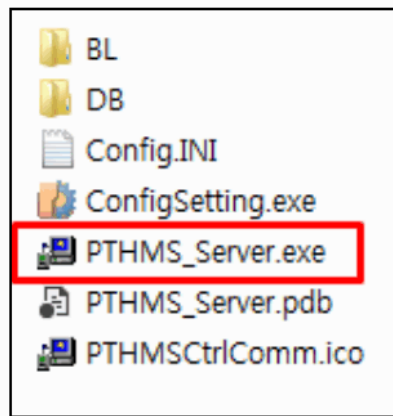
Ex) 192.168.0.52,1433



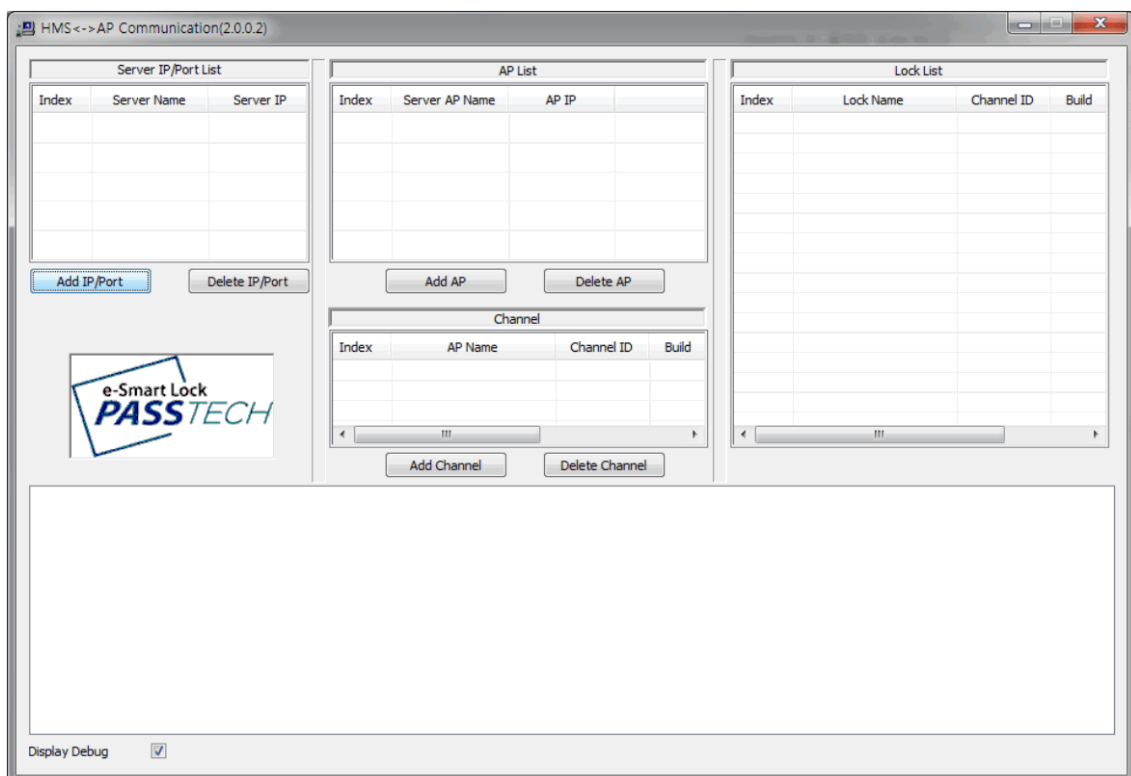
Server Connection

① Run the Server Program (PTHMS_Server.exe).

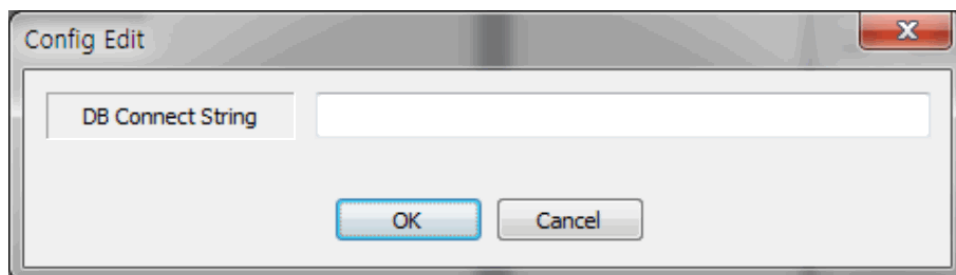




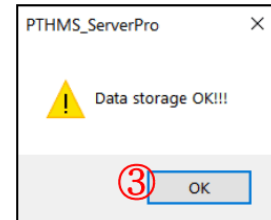
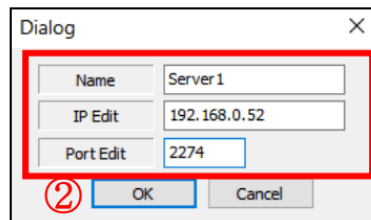
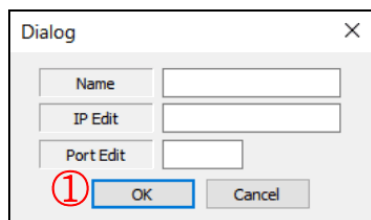
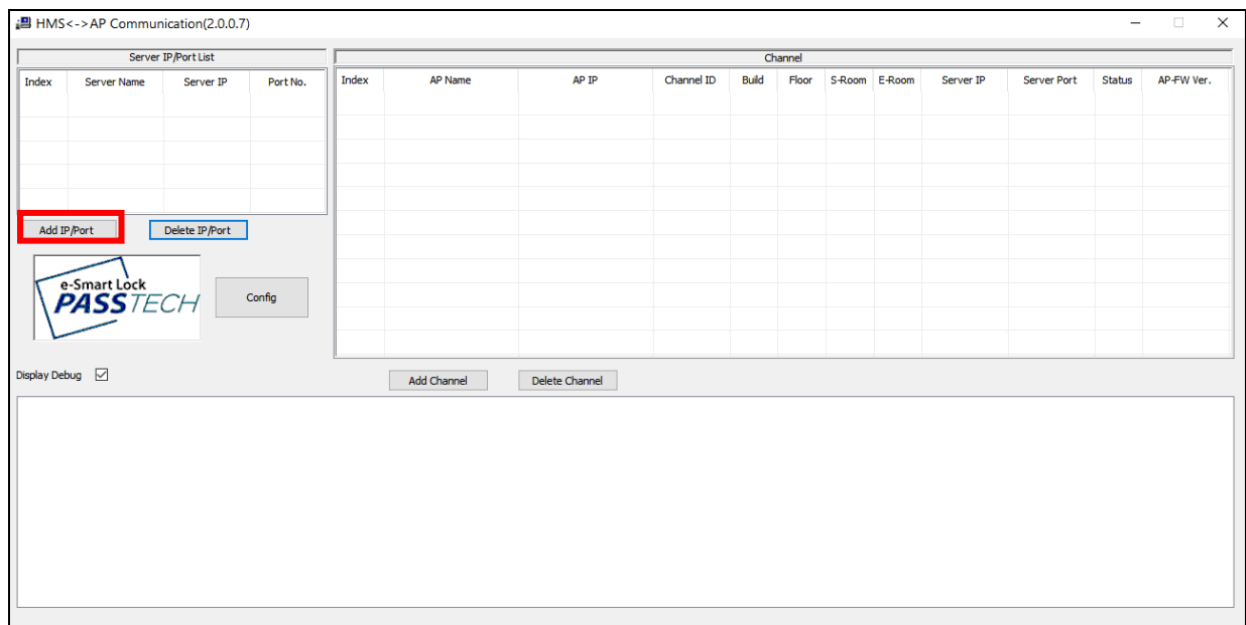
② The program is started as shown below.



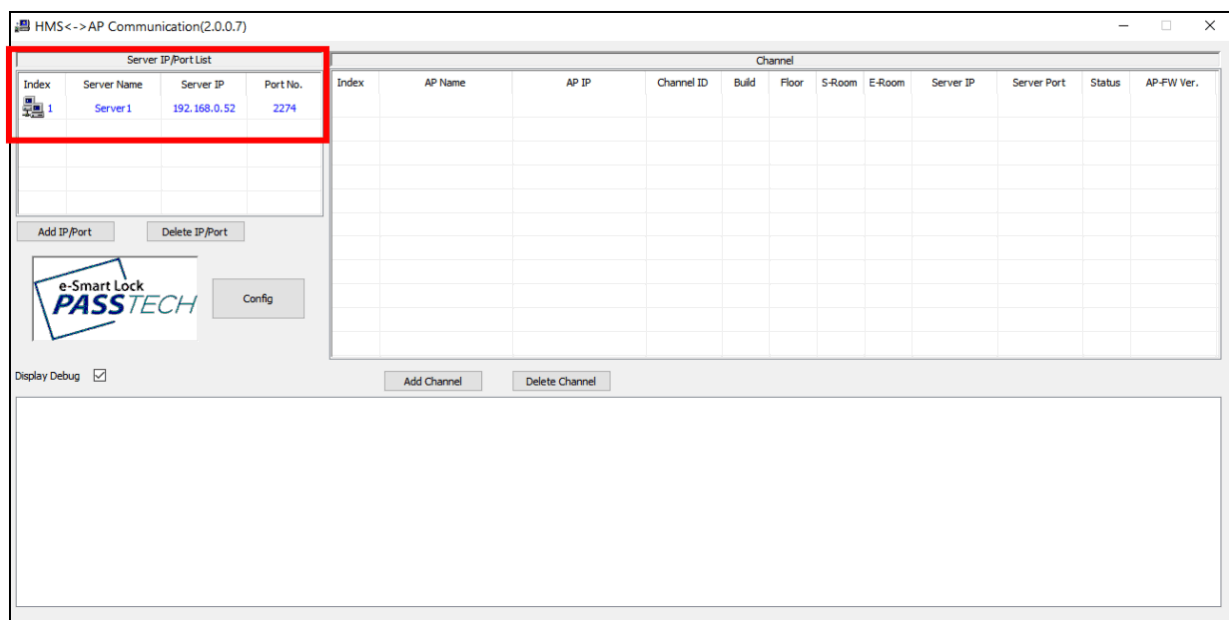
③ If the SQL DB is not accessible, the above program will not be executed. The DB Connection Configuration screen will appear, and you have to enter the DB connection value as shown below. (Refer to contents 4-1)



④ The Server Account is the part that sets the communication port to receive or send data from the AP.



- ⑤ Click “Add IP/Port”, and once you see a Dialog screen, input server name, IP address where the server is installed, and the port number. Then, click “OK” to create a service account.
- ⑥ Once the server account is created successfully, you will see a screen below.

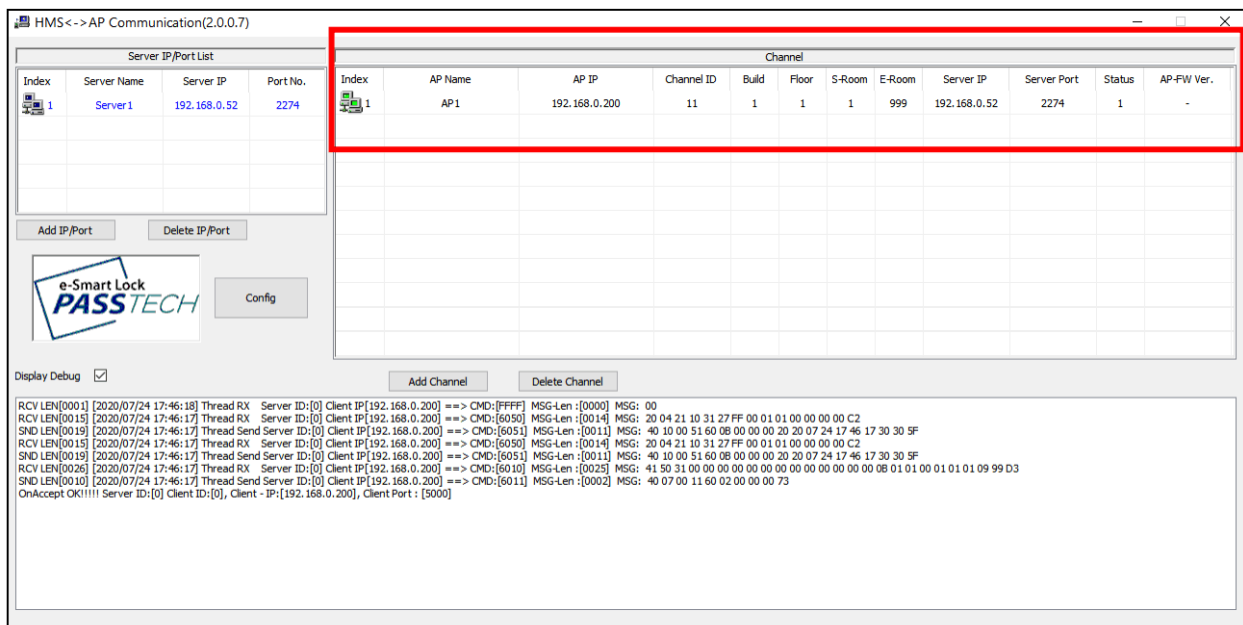





- ⑦ This is the part where you can register the AP information that connects to Server, which you have set from AP Management Program. (AP Client has to be set up before this. – please refer to 3-2)
- ⑧ Click “Add Channel”

⑨ Put all the information same as AP Client.

①	AP Name (must be same as AP Client)
②	Channel number (must be same as AP Client)
③	AP IP Address (same IP as Local IP in AP Client)
④	Lock Info. (Building#, Floor#, Start/End Room# -> must be same as AP Client)
⑤	Server IP (Your PC IP)
⑥	Server Port (Default: 2274)

⑩ Once it is connected, you will see it on the Channel box.

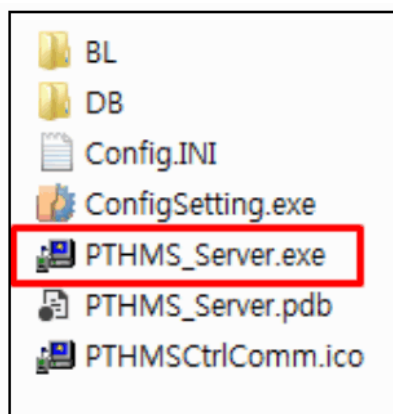


Item	Description
	Connected
	Disconnected Check if AP information in the AP Setting and Client program is the same, and the AP cable is connected well
	Not Connected

Server Startup and Shutdown

1. Server Program Startup

- ① Run Server Program (PTHMS_Server.exe).

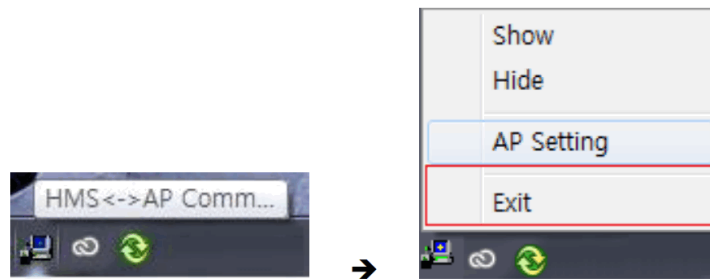


- ② When the program is running, a Tray-Icon is created as below.



2. Program Shutdown

To exit the program, right-click the Server Icon on the Tray-Icon and click "Exit"., or can be forced to terminate in the Task Manager.



Specification

Item	Detail
Material	ABS
Communication	2.4Ghz Zigbee(ONLINE LOCK COMM) TCP/IP(SERVER COMM)
Security	AES128
Power Supply	DC 12V ADAPTOR & POE(IEEE802.3af)
Indicator	LED
Dimension	101.60mm * 101.60mm * 27.50mm
Operation TEMP	0°C ~ 50°C
Certification	CE, FCC

*****This furniture lock system is used in hotels, offices, and any place which is without a residential area.

Regulatory Statement

FCC Part 15.105 statement (Class A)

This equipment has been tested and found to comply with the limits for a Class A digital device, pursuant to part 15 of the FCC Rules. These limits are designed to provide reasonable protection against harmful interference when the equipment is operated in a commercial environment. This equipment generates, uses, and can radiate radio frequency energy and, if not installed and used in accordance with the instruction manual, may cause harmful interference to radio communications. Operation of this equipment in a residential area is likely to cause harmful interference in which case the user will be required to correct the interference at his own expense.

FCC Part 15.21 statement

Any changes or modifications not expressly approved by the party responsible for compliance could void the user's authority to operate this equipment. This device must not be co-located or operating in conjunction with any other antenna or transmitter.

RF Exposure Statement (MPE)

The antenna(s) must be installed such that a minimum separation distance of at least 20 cm is maintained between the radiator (antenna) and all persons at all times.


Supplier's Declaration of Conformity

47 CFR § 2.1077 Compliance Information

Responsible Party –
Card com
Address: 1301 S. Beach Blvd. Ste-P La Habra, CA 90631
Tel.: 562-943-6300
E-mail: esmartlock@cardcom.com

Version: 1.0
<http://www.esmartlock.com>

Documents / Resources

	<p>Passtech AP300 Access Point [pdf] User Guide AP300, W6YAP300, AP300 Access Point, Access Point, Point</p>
---	--

Manuals+.