

PASCO PS-3222 Wireless Temperature Link User Manual

[Home](#) » [PASCO](#) » PASCO PS-3222 Wireless Temperature Link User Manual 

Contents

- [1 PASCO PS-3222 Wireless Temperature Link](#)
- [2 Introduction](#)
- [3 Components](#)
- [4 Get the software](#)
- [5 PASCO Capstone](#)
- [6 Troubleshooting](#)
- [7 Specifications and accessories](#)
- [8 Limited warranty](#)
- [9 FCC statement](#)
- [10 Technical support](#)
- [11 Documents / Resources](#)
 - [11.1 References](#)
- [12 Related Posts](#)



PASCO PS-3222 Wireless Temperature Link

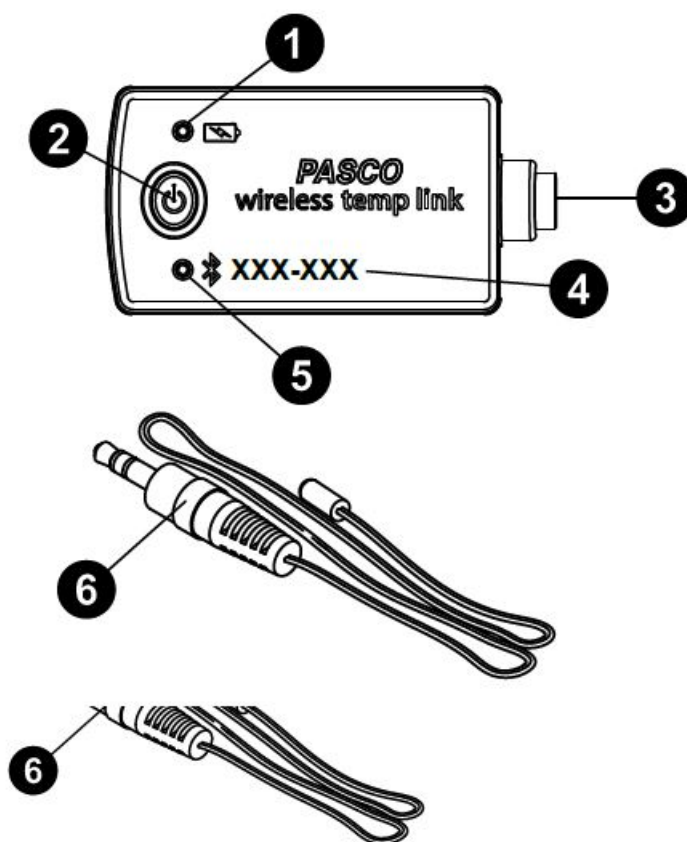


Introduction

The Wireless Temperature Link is a versatile measuring device that can connect to a computer or mobile device wirelessly via Bluetooth. It ships with a Fast Response Temperature Probe (PS-2135) with a wide temperature range (-30 to +105 °C). The sensor can also connect to a wide variety of other PASCO temperature probes and other apparatuses, listed under Compatible equipment. This temperature reading is transmitted wirelessly via Bluetooth and displayed on a computer or tablet by PASCO Capstone or SPARKvue data collection software. The Wireless Temperature Link is powered by a replaceable three-volt coin cell battery (included). Since each sensor has a unique device ID number, more than one sensor can be connected to a single computer or tablet at the same time.

NOTE: The sensor housing is water-resistant but not waterproof. Immersing the sensor in water may cause a loss of wireless connection. To avoid this, place only the connected temperature probe into the substance being measured. OTE: The sensor housing is water-resistant but not waterproof. Immersing the sensor in water may cause a loss of wireless connection. To avoid this, place only the connected temperature probe into the substance being measured.

Components



Battery Status LED

- Blinks red to indicate that the battery is low on power and will soon need to be replaced.

ON/OFF button

- Press to turn the sensor on. Press and briefly hold to turn the sensor off. To preserve the battery, the sensor automatically turns itself off after several minutes of inactivity if not connected.

3.5 mm diameter port

- Connect the temperature port (or other device) to the sensor by plugging the device's 3.5 mm diameter plug

into this port.

Device ID

- Use to identify the sensor when connecting via Bluetooth.

Bluetooth Status LED

- Indicates the status of the sensor's Bluetooth connection.

Bluetooth LED	Status
Red blink	Ready to pair
Green blink	Connected
Yellow blink	Logging data

- For information on remote data logging, see the PASCO Capstone or SPARKvue online help.

Fast Response Temperature Probe

- Connects to the 3.5 mm port on the sensor. Use to measure temperatures in the range of -30 °C to 105 °C.

Included equipment

- Wireless Temperature Link (PS-3222)
- Fast Response Temperature Probe (PS-2135)

Required item

- PASCO Capstone or SPARKvue data collection software

Compatible equipment



- PASSPORT Skin/Surface Temperature Probe (PS-2131)
- PASSPORT Stainless Steel Temperature Probe (PS-2153)
- Absolute Zero Sphere (TD-8595)
- Ideal Gas Law Apparatus (TD-8596A)

Get the software

You can use the sensor with SPARKvue or PASCO Capstone software. If you're not sure which to use, visit [pasco.com/products/guides/software-comparison](https://www.pasco.com/products/guides/software-comparison).

SPARKvue is available as a free app for Chromebook, iOS, and Android devices. We offer a free trial of SPARKvue and Capstone for Windows and Mac. To get the software, go to [pasco.com/downloads](https://www.pasco.com/downloads) or search for SPARKvue in your device's app store.

If you have installed the software previously, check that you have the latest update:

-  SPARKvue: Main Menu  > Check for Updates
-  PASCO Capstone: Help > Check for Updates

Check for a firmware update SPARKvue

1. Press the power button until the LEDs turn on.
2. Open SPARKvue, then select Sensor Data.



3. From the list of available devices, select the sensor that matches your sensor's device ID.
4. A notification will appear if a firmware update is available. Click Yes to update the firmware.
5. Close SPARKvue once the update is complete.

PASCO Capstone

1. Press the power button until the LEDs turn on.
2. Open PASCO Capstone and click Hardware Setup from the Tools palette.



3. From the list of available wireless devices, select the sensor that matches your sensor's device ID.
4. A notification will appear if a firmware update is available. Click Yes to update the firmware.
5. Close Capstone once the update is complete.

Connect the temperature probe


- To connect the temperature probe (or other apparatus) to the Wireless Temperature Link, plug the 3.5 mm diameter plug of the probe into the 3.5 mm diameter port on the sensor.
- Ensure the connection is secure to prevent potential disconnection during data collection.

Set up the software SPARKvue

Connecting the sensor to a tablet or computer via Bluetooth:


1. Turn on the Wireless Temperature Link. Check to make sure the Bluetooth Status LED is blinking red.
2. Open SPARKvue, then click Sensor Data.
3. From the list of available wireless devices on the left, select the device that matches the device ID printed on your sensor.

Collecting data using SPARKvue



1. Select the measurement you intend to record from the Select Measurements for Templates column by clicking the check box next to the relevant measurement's name.
2. Click Graph in the Templates column to open the Experiment Screen. The graph's axes will auto-populate with the selected measurement versus time.
3. Click Start  to begin collecting data.

PASCO Capstone

Connecting the sensor to a computer via Bluetooth

1. Turn on the Wireless Temperature Link. Check to make sure the Bluetooth Status LED is blinking red.
2. Open PASCO Capstone, then click Hardware Setup  in the Tools palette.
3. From the list of Available Wireless Devices, click the device that matches the device ID printed on your sensor.

Collecting data using Capstone

1. Double-click the Graph  icon in the Displays palette to create a new blank graph display.
2. In the graph display, click the <Select Measurement> box on the y-axis and select an appropriate measurement from the list. The x-axis will automatically adjust to measure time.
3. Click Record  to begin collecting data.

Calibration

Calibration of the Wireless Temperature Link is not always necessary, especially if you are measuring a change in temperature rather than absolute temperature values. However, if necessary, it is possible to calibrate the sensor using PASCO Capstone or SPARKvue. For information on calibrating the Wireless Temperature Link, see the PASCO Capstone or SPARKvue online help and search for "Calibrate a temperature sensor".

Troubleshooting

- If the sensor loses Bluetooth connection and will not reconnect, try cycling the ON button. Press and briefly hold the button until the LEDs blink in sequence, then release the button.
- If the sensor stops communicating with the computer software or tablet application, try restarting the software or application. If the problem persists, press and hold the ON button for 10 seconds, then release the button and start the sensor in the usual way.
- If the above steps do not fix a connection problem, turn Bluetooth off and then back on for your computer or tablet, then retry.

Storing the sensor

If you will be storing the sensor for several months, we recommend that you remove the battery from the sensor and store it separately, in order to prevent damage to the sensor in the event of a battery leak. The temperature probe should be rinsed and dried prior to being stored.

Battery removal and replacement

The Wireless Temperature Link is powered by a CR2032 coin cell battery. If the sensor's Battery Status LED blinks red, the battery is low on power and will soon need to be replaced.

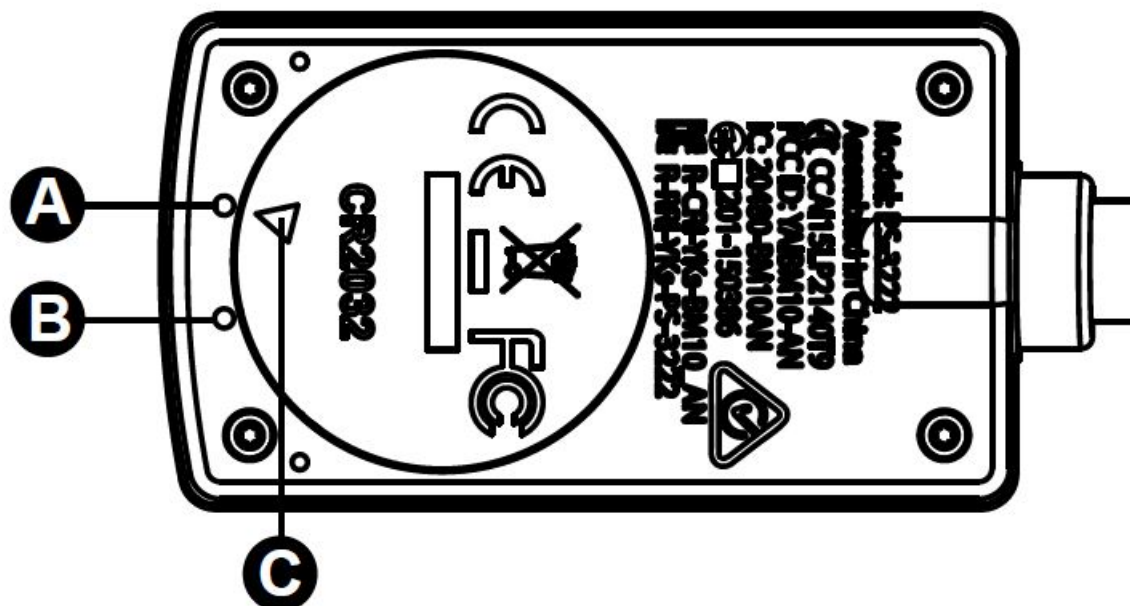


Figure 1. Wireless Temperature Link's battery compartment. A: First mark. B: Second mark. C: Indicator mark.

- To replace the battery, follow these steps. The components are labelled in Figure 1 above.
1. Insert a coin into the slot in the battery compartment door. Turn counterclockwise until the indicator (C) is aligned with the second mark (B).
 2. Remove the battery compartment door, O-ring gasket, and battery.
 3. Insert a new CR2032 battery in the compartment, with the positive (+) side facing upward toward the door.
 4. Insert the O-ring gasket into the compartment.
 5. Place the door on the sensor, aligning the indicator with the sensor mark (B). Insert the coin back into the slot and turn the door clockwise until the indicator is aligned with the first mark (A).

Software help

The SPARKvue and PASCO Capstone Help provide information on how to use this product with the software. You can access the help from the software or online.

SPARKvue

- Software: Main Menu > Help
- Online: help.pasco.com/sparkvue

PASCO Capstone

- Software: Help > PASCO Capstone Help

- Online: help.pasco.com/capstone

Specifications and accessories

- Visit the product page at pasco.com/product/PS-3222 to view the specifications and explore accessories.
- You can also download experiment files and support documents from the product page.

Experiment files

- Download one of several student-ready activities from the PASCO
- Experiment Library. Experiments include editable student handouts and teacher notes. Visit pasco.com/freelabs/PS-3222.

Limited warranty

- For a description of the product warranty, see the Warranty and Returns page at www.pasco.com/legal.

Copyright

- This document is copyrighted with all rights reserved.
- Permission is granted to non-profit educational institutions for reproduction of any part of this manual, providing the reproductions are used only in their laboratories and classrooms, and are not sold for profit.
- Reproduction under any other circumstances, without the written consent of PASCO Scientific, is prohibited.

Trademarks

PASCO and PASCO Scientific are trademarks or registered trademarks of PASCO Scientific, in the United States and in other countries. All other brands, products, or service names are or may be trademarks or service marks of, and are used to identify, products or services of, their respective owners. For more information visit www.pasco.com/legal.

Product end-of-life disposal

This electronic product is subject to disposal and recycling regulations that vary by country and region. It is your responsibility to recycle your electronic equipment per your local environmental laws and regulations to ensure that it will be recycled in a manner that protects human health and the environment. To find out where you can drop off your waste equipment for recycling, please contact your local waste recycling or disposal service, or the place where you purchased the product. The European Union WEEE (Waste Electronic and Electrical Equipment) symbol on the product or its packaging indicates that this product must not be disposed of in a standard waste container.



CE statement

This device has been tested and found to comply with the essential requirements and other relevant provisions of the applicable EU Directives.

FCC statement

This device complies with part 15 of the FCC Rules.

Operation is subject to the following two conditions:

1. This device may not cause harmful interference, and
2. this device must accept any interference received, including interference that may cause undesired operation.

Battery disposal


Batteries contain chemicals that, if released, may affect the environment and human health. Batteries should be collected separately for recycling and recycled at a local hazardous material disposal location adhering to your country and local government regulations. To find out where you can drop off your waste battery for recycling, please contact your local waste disposal service or the product representative. The battery used in this product is marked with the European Union symbol for waste batteries to indicate the need for the separate collection and recycling of batteries.



Technical support

- Need more help? Our knowledgeable and friendly Technical Support staff is ready to answer your questions or walk you through any issues.
 - Chat: [pasco.com](https://www.pasco.com)
 - Phone 1-800-772-8700 x1004 (USA) +1 916 462 8384 (outside USA)
 - Email: support@pasco.com
-

Documents / Resources

	<p>PASCO PS-3222 Wireless Temperature Link [pdf] User Manual PS-3222 Wireless Temperature Link, PS-3222, Wireless Temperature Link, Temperature Link</p>
---	--

References

- [PASCO Capstone Help](#)
- [SPARKvue Help](#)
- [PASCO scientific | Science Lab Equipment and Teacher Resources](#)
- [PASCO scientific | Science Lab Equipment and Teacher Resources](#)

- [!\[\]\(71ac35c616fd8bfda805d579390e24d8_img.jpg\) Popular Downloads | PASCO](#)
- [!\[\]\(b10a8b91056068472be58f587e00cb47_img.jpg\) Lab Experiment Library - Resources | PASCO](#)
- [!\[\]\(26a0aa65ffdf9b4c0922ec277970eeda_img.jpg\) Wireless Temperature Sensor Link - PS-3222 - Products | PASCO](#)
- [!\[\]\(94aeee9c39a3a3d10654831c4bdd6b76_img.jpg\) Product Guides | PASCO](#)
- [!\[\]\(3e6c1aedeeaa8d5deb59d3ee4ab46da3_img.jpg\) Software Comparison: SPARKvue or Capstone? | PASCO](#)
- [!\[\]\(c902edf397a6ca641da2827a7619fb31_img.jpg\) PASCO scientific | Science Lab Equipment and Teacher Resources](#)
- [!\[\]\(2eeb38d109c7620c04b72105577a1616_img.jpg\) Privacy Policies | PASCO](#)
- [!\[\]\(9b13254820f9ffd91316055c68d8eb60_img.jpg\) Privacy Policies | PASCO](#)
- [User Manual](#)