



PARTNER C10-1R POS Terminal User Guide

[Home](#) » [PARTNER](#) » PARTNER C10-1R POS Terminal User Guide 

Contents

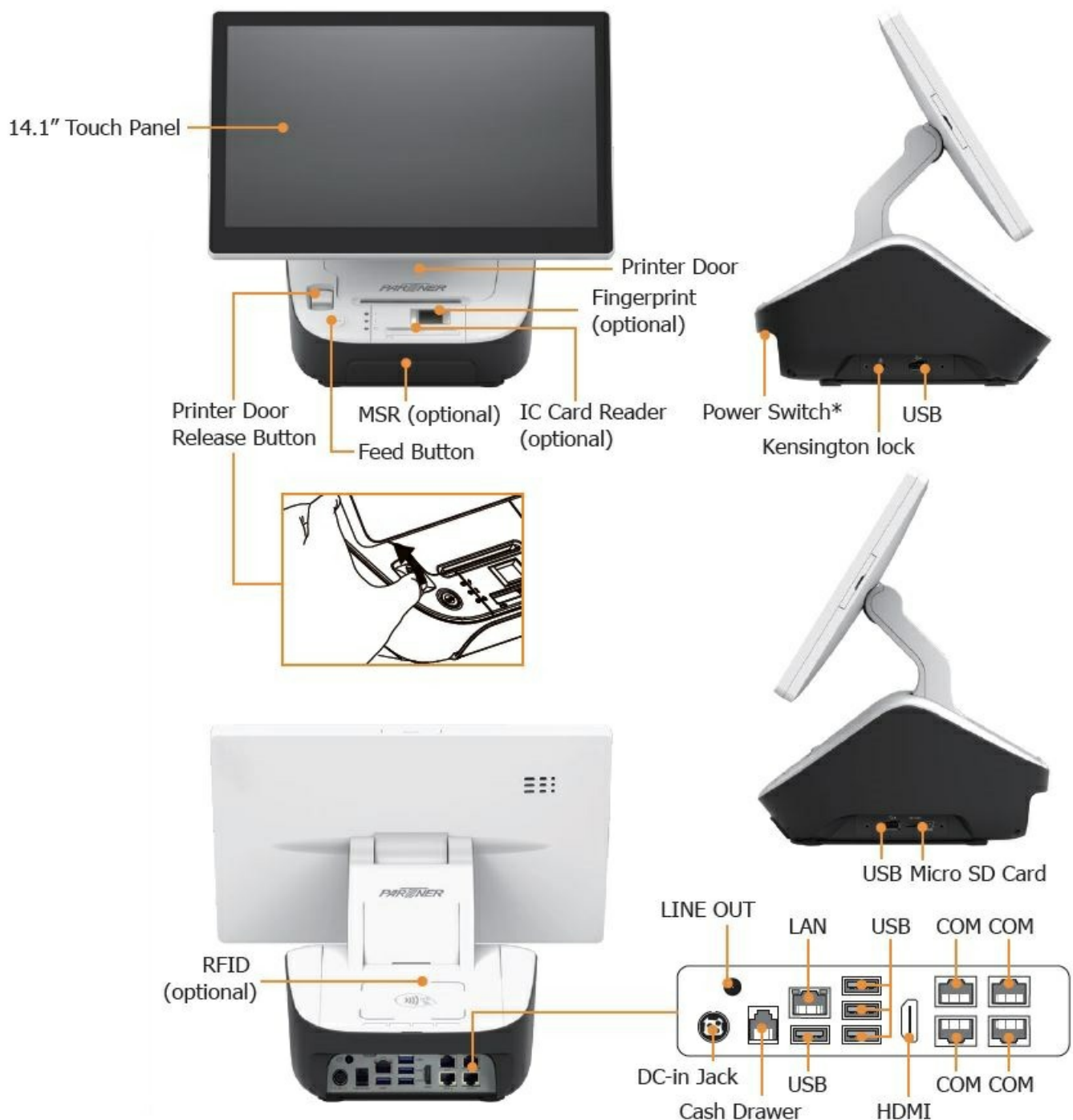
- [1 PARTNER C10-1R POS Terminal](#)
- [2 Identifying Components](#)
- [3 FCC Statement](#)
- [4 Safety information](#)
- [5 Specification](#)
- [6 CE RF Feature](#)
- [7 Documents / Resources](#)
 - [7.1 References](#)
- [8 Related Posts](#)



PARTNER C10-1R POS Terminal



Identifying Components



FCC Statement

Federal Communications Commission (FCC) Statement

This device complies with part 15 of the FCC Rules. Operation is subject to the following two conditions:

1. This device may not cause harmful interference, and
2. this device must accept any interference received, including interference that may cause undesired operation.

This device has been tested and found to comply with the limits for a Class A digital device, pursuant to part 15 of the FCC rules. These limits are designed to provide reasonable protection against harmful interference in a residential installation. This equipment generates, uses, and can radiate radio frequency energy and, if not installed and used in accordance with the instructions, may cause harmful interference to radio communications. However, there is no guarantee that interference will not occur in a particular installation. If this equipment does cause harmful interference to radio or television reception, which can be determined by turning the equipment off

and on, the user is encouraged to try to correct the interference by one or more of the following measures:

- Reorient or relocate the receiving antenna.
- Increase the separation between the equipment and the receiver.
- Connect the equipment to an outlet on a circuit different from that to which the receiver is connected.
- Consult the dealer or an experienced radio/TV technician for help.

WARNING

- The system uses a 3V CR2032 battery mounted on the mainboard to keep time. There is a risk of explosion if the wrong battery type is used when replacing. Dispose of used batteries according to local ordinance regulations.

WARNING

- This is Class A Product. In a domestic environment, this product may cause radio interference in which case the user may be required to take adequate measures.

Safety information

Before installing and using the machine, take note of the following precautions:

- Do not place the unit on an unstable surface, cart, or stand.
- Do not block the slots and opening on the unit, which is provided for ventilation.
- Only use the power source indicated on the marking label. If you are not sure, contact your dealer or the Power Company.
- When replacing parts, ensure that your service technician uses the parts specified by the manufacturer.
- Do not place anything on the power cord. Place the power cord where it will not be in the way of foot traffic.

FCC Radiation Exposure Statement

- This equipment complies with FCC radiation exposure limits set forth for an uncontrolled environment.
- This equipment should be installed and operated with a minimum distance of 20cm between the radiator & your body.

Specification

Item	C14-1R
Display	14.1", Resolution 1366 x 768
Touch	PCAP touch
CPU	Rockchip RK3568
Memory	DDR4 4GB
Storage	Emmc64GB + 1x Micro SD Card Slot
External I/O Interface	4 x USB 3.2 + 2 x USB 2.0 4 x Serial ports, RS232 (RJ45), 0V/5V/12V selected in UI (COM1, COM2, COM3, COM4) 1 x LAN, (IEEE 802.3 10/100/1000 Mbps Ethernet, RJ45) 1 x RJ11 port supports 2 cash drawers with 24V / 12V by jumper setting 1 x Audio (1 x line out) 1 x HDMI 2.1 1 x DC +24V input 1 x Micro SD card
Speaker	1 x Speaker 3W
Printer	3" Thermal printer
Optional Peripheral	MSR (Beep), IC Card Reader, Fingerprint, RFID 2D Bar Code Scanner 5M Camera CD-101C
Display Support	2 Independent Displays (Main Display + CD-101C or HDMI)
Spill & Dust resistant	N/A
Operation System	Android 12
SW	N/A
Power Adaptor	AC-In 100~240V / DC-Out 24V,72W
Reliability	System Operating Temperature:0~40°C System Humidity: 15% ~ 80% Storage Temperature: -20~60°C
Dimensions	340.64 (W) x 315.19 (H) x 247.13 (D) mm
Weight	4.0 Kgs

POS Terminal		Model : C14-1R				
Part name	Hazardous substances' name					
	Lead(Pb) and its compounds	Mercury(Hg) and its compounds	Cadmium(Cd) and its compounds	Hexavalent chromium (Cr6+) and its compounds	Polybrominated biphenyls (PBB)	Polybrominated diphenyl ethers (PBDE)
Shell Plastic	○	○	○	○	○	○
Speaker	○	○	○	○	○	○
Panel LCD	○	○	○	○	○	○
board Circuit	○	○	○	○	○	○
Power Cable	○	○	○	○	○	○
Wire Other	○	○	○	○	○	○
This table is prepared in accordance with the provisions of SJ/T 11364. ○ : Indicates that said hazardous substance contained in all of the homogeneous materials for this part is below the limit requirement of GB/T 26572. × : Indicates that said hazardous substance contained in at least one of the homogeneous materials used for this part is above the limit requirement of GB/T 26572.						

CE RF Feature



RF Spec.	NFC
Frequency Range	13.56MHz
Max. Output Power (dBm)	NA

Contact Information

Partner Tech Corporation

- 10F., 233-1, Baoqiao Road, Xindian, New Taipei City 231, Taiwan
- Phone: +886-2-29188500
- <http://www.partner.com.tw/>.

Documents / Resources

	<p>PARTNER C10-1R POS Terminal [pdf] User Guide</p> <p>NDPC10-1R, NDPC101R, C10-1R, POS Terminal, C10-1R POS Terminal, Terminal</p>
	<p>PARTNER C10-1R POS Terminal [pdf] User Guide</p> <p>NDPC10-1R, NDPC101R, c10 1r, C10-1R, POS Terminal, C10-1R POS Terminal, Terminal</p>

References

- [Partner Tech US | POS Terminals, Self-Checkout Solutions, Kiosks, Mobile POS, Mobile Computers, POS Peripherals](#)

Manuals+.