

[Skip to content](#)

Manuals+

User Manuals Simplified.



PARTNER C10-1E All In One POS Terminal System User Guide

[Home](#) » [PARTNER](#) » PARTNER C10-1E All In One POS
Terminal System User Guide



Contents [hide](#)

1 C10-1E

1.1 Quick Start Guide

1.2 Identifying Components

1.3 Specification

1.3.1 CE RF Feature

1.3.2 Federal Communications Commission (FCC) Statement

1.3.3 Safety information

1.3.4 FCC Radiation Exposure Statement:

2 Documents / Resources

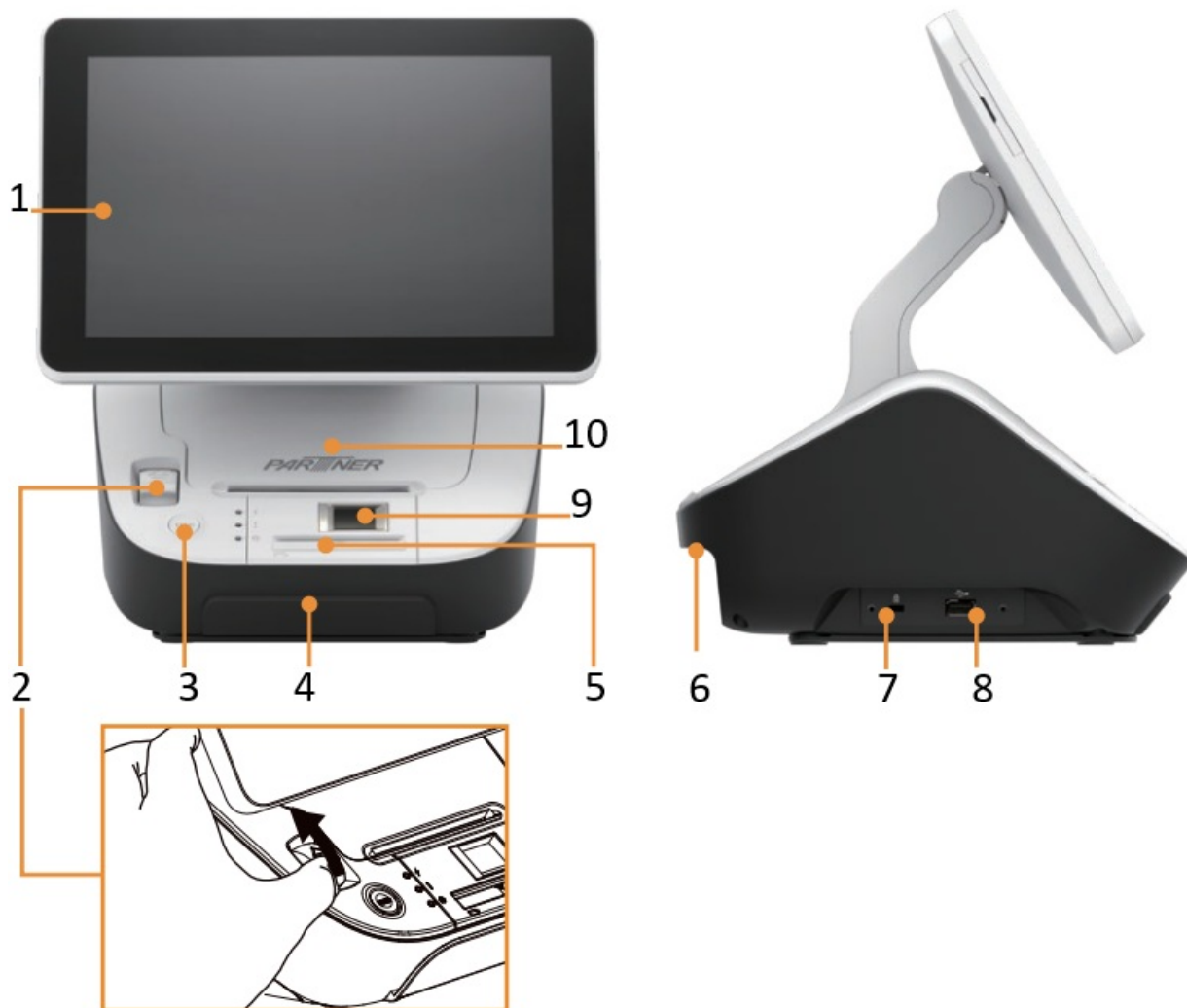
2.1 References

3 Related Posts

C10-1E

Quick Start Guide

Identifying Components



1. 10.1" Touch Panel
2. Printer Door Release Button
3. Feed Button
4. MSR (optional)
5. IC Card Reader (optional)
6. Power Switch*
7. Kensington lock
8. USB
9. Fingerprint (optional)
10. Printer Door



1. USB
2. RFID (optional)
3. LINE OUT
4. LAN
5. COM
6. DC-in Jack
7. Cash Drawer
8. HDMI

Specification

Item	C10-1E
Display	10.1", Resolution 800 x 1280
Touch	PCAP touch
CPU	Intel® Celeron® Processor J6412 (Elkhart Lake)
Memory	DDR4 4GB , 8GB ,16GB
Storage	M.2 PCIe SSD: 128G / 256G / 512G
	4 x USB 3.2 + 2 x USB 2.0
	4 x Serial ports, RS232 (RJ45), 0V/5V/12V selected in BIOS (COM1, COM2, COM3, COM4)
	1 x LAN, (IEEE 802.3 10/100/1000 Mbps Ethernet, RJ45)
	1 x RJ11 port supports 2 cash drawers with 24V / 12V by jumper setting
External I/O Interface	1 x Audio (1 x line out)
	1 x HDMI 2.1
	1 x DC +24V input
	N/A
Speaker	1 x Speaker 3W
Printer	3" Thermal printer
	MSR (Beep), IC Card Reader, Fingerprint, RFID
Optional Peripheral	2D Bar Code Scanner
	5M Camera
	CD-101C
Display Support	3 Independent Displays (Main Display + HDMI + CD-101C)
Spill & Dust resistant	N/A
Operation System	1. Windows 11 IoT Enterprise AC (64bit) 2. Windows 10 IoT Enterprise LTSC 21H2 (64bit) and newer version 3. Linux (Ubuntu 22.04)
TPM	H/W TPM 2.0
Power Adaptor	AC-In 100~240V / DC-Out 24V,72W
	System Operating Temperature:0~40°C
Reliability	System Humidity: 15% ~ 80%
	Storage Temperature: -20~60°C
Dimensions	262.26 (W) x 291.77 (H) x 247.13 (D) mm
Weight	3.3 Kgs

POS Terminal Model C10-1E						
Part name	Lead(Pb) and its compounds	Mercury(Hg) and its compounds	Cadmium(Cd) and its compounds	Hexavalent chromium (Cr6+) and its compounds	Polybrominated biphenyls (PBB)	Polybrominated diphenyl ethers (PBDE)
Plastic Shell	O	O	O	O	O	O
Speaker	O	O	O	O	O	O
LCD Panel	O	O	O	O	O	O
Circuit board	O	O	O	O	O	O
Power Cable	O	O	O	O	O	O
Other Wire	O	O	O	O	O	O

This table is prepared in accordance with the provisions of SJ/T 11364.

O : Indicates that said hazardous substance contained in all of the homogeneous materials for this part is below the limit requirement of GB/T 26572.

X : Indicates that said hazardous substance contained in at least one of the homogeneous materials used for this part is above the limit requirement of GB/T 26572.

CE RF Feature

RF Spec.

Frequency Range

Max. Output Power (dBm)

NFC

13.56MHz

NA

Federal Communications Commission (FCC) Statement

This device complies with part 15 of the FCC Rules. Operation is subject to the following two conditions:

(1) This device may not cause harmful interference, and (2) this device must accept any interference received, including interference that may cause undesired operation.

This device has been tested and found to comply with the limits for a Class A digital device, pursuant to part 15 of the FCC rules. These limits are designed to provide reasonable protection against harmful interference in a residential installation. This equipment generates, uses and can radiate radio frequency energy and, if not installed and used in accordance with the instructions, may cause harmful interference to radio communications. However, there is no guarantee that interference will not occur in a particular installation. If this equipment does cause harmful interference to radio or television reception, which can be determined by turning the equipment off and on, the user is encouraged to try to correct the interference by one or more of the following measures:

- Reorient or relocate the receiving antenna.
- Increase the separation between the equipment and receiver.
- Connect the equipment into an outlet on a circuit different from that to which the receiver is connected.
- Consult the dealer or an experienced radio/TV technician for help.

WARNING

The system uses a 3V CR2032 battery mounted on the main board to keep time. There is a risk of explosion if the wrong battery type is used when replacing. Dispose of used batteries according to local ordinance regulations.

WARNING

This is Class A Product. In domestic environment this product may cause radio interference in which case the user may be required to take adequate measures.

Safety information

Before installing and using the machine, take note of the following precautions:

- Do not place the unit on an unstable surface, cart, or stand.
- Do not block the slots and opening on the unit, which are provided for ventilation.
- Only use the power source indicated on the marking label. If you are not sure, contact your dealer or the Power Company.
- When replacing parts, ensure that your service technician uses parts specified by the manufacturer.
- Do not place anything on the power cord. Place the power cord where it will not be in the way of foot traffic.

FCC Radiation Exposure Statement:

This equipment complies with FCC radiation exposure limits set forth for an uncontrolled environment.
This equipment should be installed and operated with minimum distance 20cm between the radiator & your body.

Contact Information

Partner Tech Corporation
10F., 233-1, Baoqiao Road, Xindian, New Taipei City 231, Taiwan
Phone: +886-2-29188500
<http://www.partner.com.tw/>

Documents / Resources



[PARTNER C10-1E All In One POS Terminal System](#) [pdf] User Guide
C10-1E, C101E, NDPC10-1E, NDPC101E, C10-1E All In One POS Terminal System, All In One POS Terminal System, POS Terminal System, Terminal System

References

- [Home - Partner Tech Corp. - POS Solutions](#)

[Manuals+](#),

- [home](#)
- [privacy](#)