



PARMIDA LED TECHNOLOGIES PLED-DN5 LED Recessed Down Light Instruction Manual

[Home](#) » [PARMIDA LED TECHNOLOGIES](#) » PARMIDA LED TECHNOLOGIES PLED-DN5 LED Recessed Down Light Instruction Manual 

PARMIDA LED TECHNOLOGIES INSTALLATION GUIDE 6 INCH 12W LED RECESSED DOWNLIGHT – 5CCT | SMOOTH TRIM PLED-DN5/612W5CCTDIM



Contents

- [1 PLED-DN5 LED Recessed Down Light](#)
- [2 SELECTING COLOR TEMPERATURE](#)
- [3 COMPATIBLE DIMMER LIST](#)
- [4 STEPS FOR INSTALLATION – TRADITIONAL RECESSED CAN](#)
- [5 Documents / Resources](#)
 - [5.1 References](#)

PLED-DN5 LED Recessed Down Light

IMPORTANT: Please read carefully and save these instructions, as you may need them at a later date. When using electrical equipment, basic safety precautions should always be followed as below:

READ AND FOLLOW BELOW SAFETY INSTRUCTIONS

GENERAL: All electrical connections and wiring must be performed by a qualified electrician and must be in accordance with local and National Electrical Code (N.E.C). LED Retrofit Kit installation requires knowledge of luminaire electrical systems.

Install this kit only in luminaire that have the construction features and dimensions shown in the photographs and/or drawings and where the input rating of the retrofit kit does not exceed the input rating of the luminaire.

1. Do not make or alter any open holes in an enclosure of wiring or electrical components during kit installation.
2. To prevent wiring damage or abrasion do not expose wiring to edges of sheet metal or other sharp objects.
3. Suitable for wet locations.
4. Supply conductors (power wires) connecting the light must be rated minimum 194°F (90°C). If uncertain consult an electrician.
5. Suitable for Type IC or suitable for Type non-IC.
6. This device is not intended for use with emergency exits.
7. This light is dimmable. Dimming range is 10%-100%. Please refer to our website for the most up-to-date compatible dimmer list.

NOTE: This device complies with part 15 of the FCC Rules. Operation is subject to the following two conditions: This device may not cause harmful interference, and This device must accept any interference received, including interference that may cause undesired operation.

UNPACKING: Thoroughly inspect the light for freight damage. Freight damage should be reported to the delivery carrier.

SELECTING COLOR TEMPERATURE

To avoid risk of damage, ensure wall switch connected to the light is turned to off position before changing or selecting desired color temperature (CCT) on the selector switch. Select the color temperature via the CCT switch located on the side of the light. Using the color (CCT) selector switch, select the desired color temperature (2700K Warm White, 3000K Soft White, 4000K Cool White, 5000K Day Light, or 6000K Bright White).

COMPATIBLE DIMMER LIST

DIMMING

Dimming performance may depend on the dimmer, the dimmer range adjustment setting (for dimmers with brightness range adjustments), the wiring method, and/or the number of LED modules installed onto the dimmer circuit.

For best results, it is recommended to install a minimum of four LED modules onto one dimmer.

Before turning on the LED lights, set dimmer position at maximum before adjusting to a lower light level.

Please follow the Dimming Control Manufacturer's instructions for the installation of all dimming controls.

NOTE: The table shows dimmers that have been tested and have demonstrated proper operation under normal conditions.

The absence of a dimmer from this chart does not necessarily imply incompatibility.

Please visit our website www.parmida.com or contact our customer support team for more details.

LUTRON

PD6WCL

MSCL-OP153M

CN-600P

DVCL-153P2.1

SCL-600P

SLV-600P

MACL-153M

DV-600P

LEVITON

IPL06

DSL06

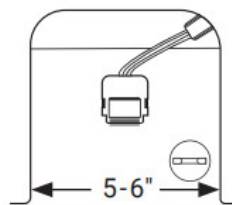
IPI06

STEPS FOR INSTALLATION – TRADITIONAL RECESSED CAN

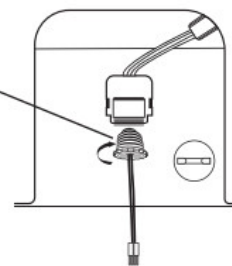
1. Ensure power is turned off at the source before installing the light.
2. Remove any existing trim prior to installation of this light.
3. Screw the E26 base adapter included in the installation kit into the traditional can.
4. For 6" housing can rotate the 3 aluminum tabs on the back of the light to their most extended position. If using a 5" housing can, do not rotate the aluminum tabs.
5. Connect the male connector of the E26 base adapter with the female connector of the light.
6. Arrange the wires and push the light inside the housing can for secured installation.

Note: Be careful not to rotate the light once it's pushed inside the can, because it may change the position of the aluminum tabs which in turn will not ensure a secured installation.

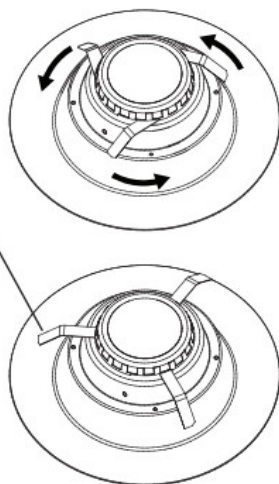
STEP 1 & 2
COMPATIBLE
HOUSING
CAN



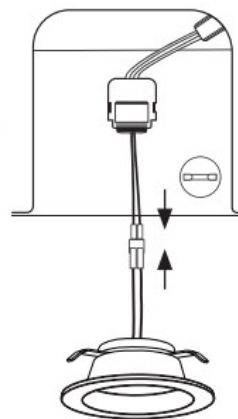
STEP 3
E26 ADAPTER



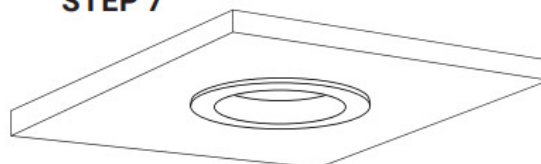
STEP 4
ALUMINUM
TABS



STEP 5



STEP 7

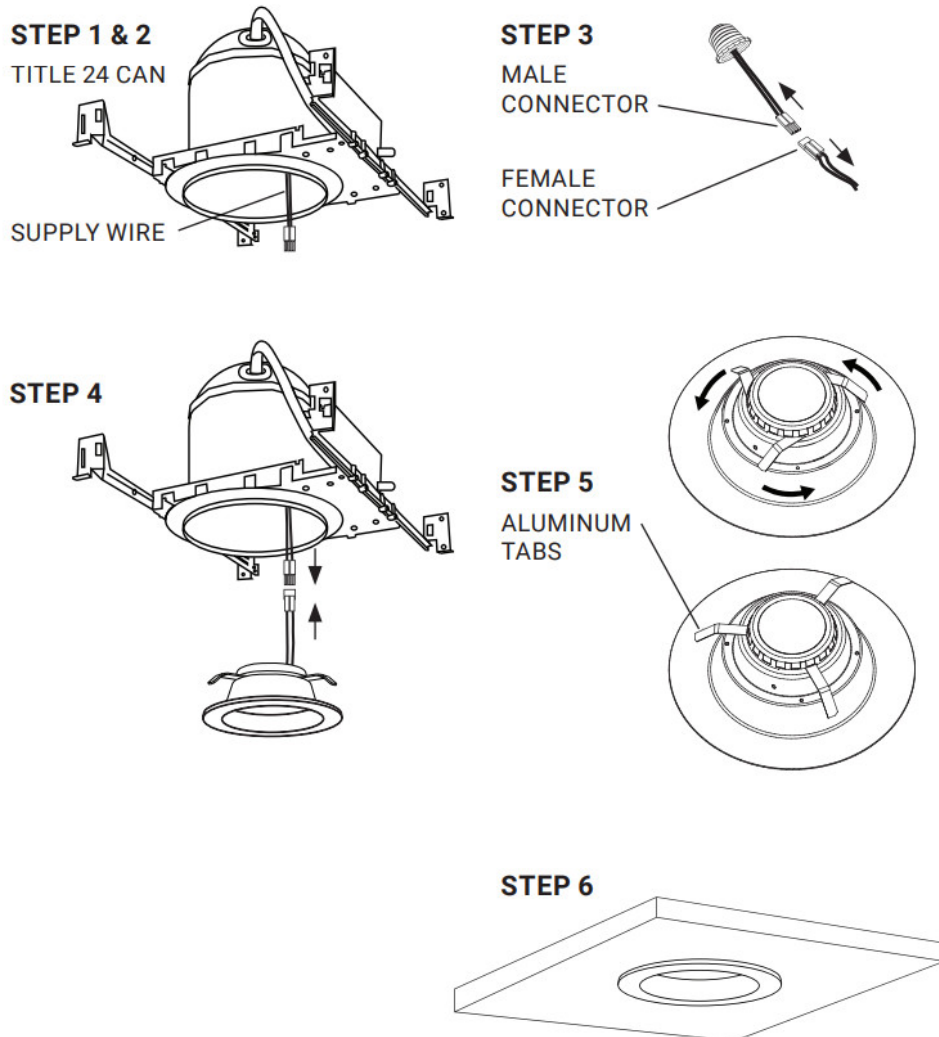


STEPS FOR INSTALLATION – TITLE 24 CAN

1. Ensure power is turned off at the source before installing the light.
2. Remove any existing trim prior to installation of this light.
3. When using a Title 24 Can, remove the E26 base adapter from the light by detaching the male and female connectors.

4. Insert the male connector from the Title 24 Can into the female connector of the light.
5. For 6" housing can rotate the 3 aluminum tabs on the back of the light to their most extended position. If using a 5" housing can, do not rotate the aluminum tabs.
6. Arrange the wires and push the light inside the housing can for secured installation.

Note: Be careful not to rotate the light once it's pushed inside the can, because it may change the position of the aluminum tabs which in turn will not ensure a secured installation.



WARNING

RISK OF FIRE OR ELECTRIC SHOCK.


DISCONNECT MAIN POWER AT FUSE OR CIRCUIT BREAKER BEFORE INSTALLING OR SERVICING THE LIGHT.

DO NOT PLACE YOUR HAND UNDERNEATH SPRING CLIPS DURING REMOVAL PROCESS. SNAPPING OF THE CLIPS CAN CAUSE INJURIES TO THE HAND.

DO NOT USE ANY OTHER DRIVER EXCEPT PARMIDA LIGHTING DRIVER THAT IS INCLUDED WITH THE LIGHT.

info@parmida.com
www.parmida.com

Documents / Resources

	<p>PARMIDA LED TECHNOLOGIES PLED-DN5 LED Recessed Down Light [pdf] Instruction Manual</p> <p>PLED-DN5 LED Recessed Down Light, PLED-DN5, LED Recessed Down Light, Recessed Down Light, Down Light, Light</p>
---	--

References

- [P Parmida LED - Energy Efficient LED Lighting Solutions — Parmida LED Technologies](#)
- [User Manual](#)

Manuals+.