



PARKSIDE IAN471082 Router Bit Set Instruction Manual

[Home](#) » [PARKSIDE](#) » PARKSIDE IAN471082 Router Bit Set Instruction Manual 

/// PARKSIDE®

ROUTER BIT SET

Operation and safety notes

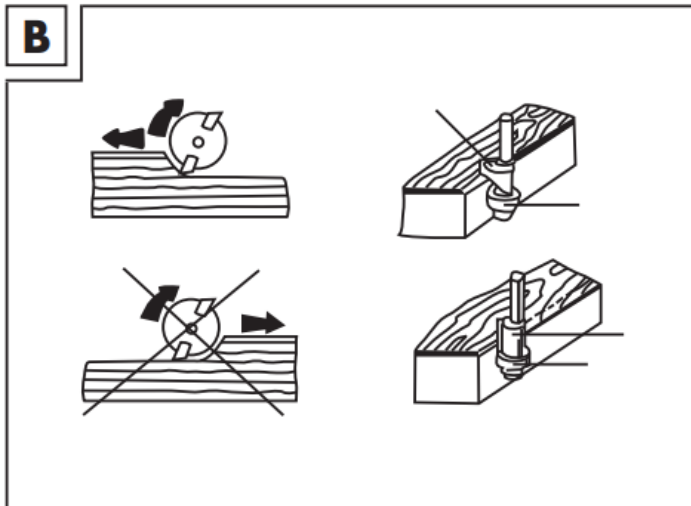
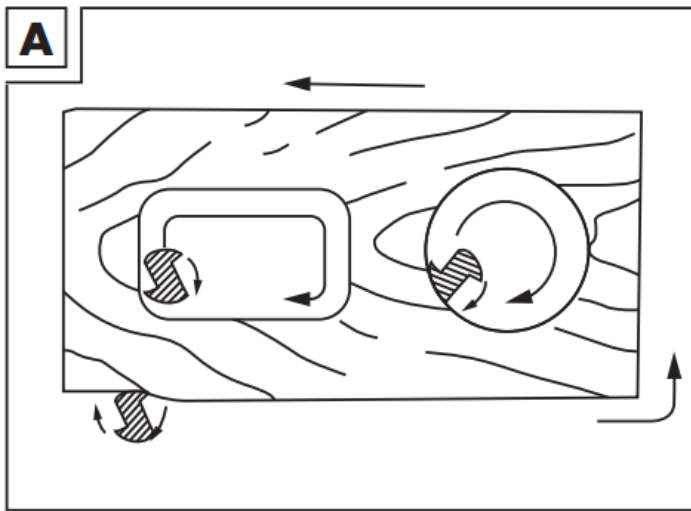
IAN 471082_2310

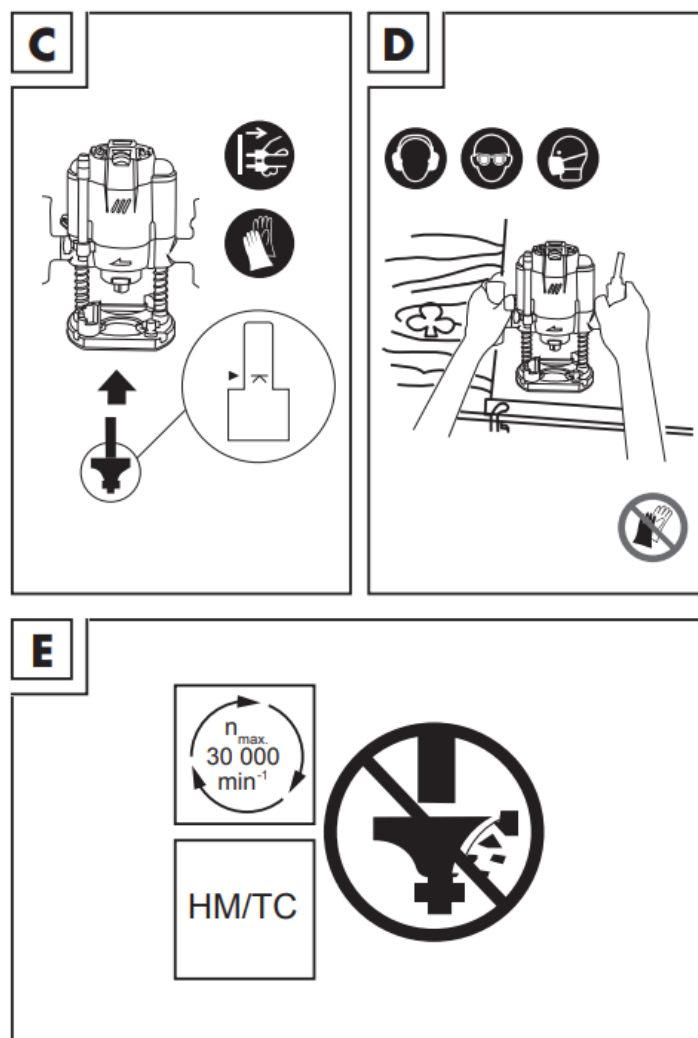


Contents

- [1 Operation and safety notes](#)
- [2 Introduction](#)
- [3 Safety instructions](#)
- [4 Use](#)
- [5 Cleaning and care](#)
- [6 Disposal](#)
- [7 Service](#)
- [8 Documents / Resources](#)
 - [8.1 References](#)
- [9 Related Posts](#)

Operation and safety notes





Introduction

We congratulate you on the purchase of your new product .

You have chosen a high quality product . Familiarise yourself with the product before using it for the first time . In addition, please carefully refer to the operating instructions and the safety advice below . Only use the product as instructed and only for the indicated field of application . Keep these instructions in a safe place . If you pass the product on to anyone else, please ensure that you also pass on all the documentation with it .

Intended use

The router bits are designed for routing wood and wood based material in a routing machine and may not be used for any other purpose .

This product is intended for private use, and is not suitable for commercial purposes .

Abbreviations:

MAN = For manual feed

HW = Uncoated hard metal on tungsten carbide base

TC = Tungsten carbide base

⚠ Safety instructions

⚠ WARNING! Read all safety warnings and all instructions . Failure to follow the warnings and instructions may result serious injury .

Always store these assembly and safety advice inside the box and keep it for further reference .

Observe the safety instructions supplied with the router you use with the router bits .

Router bits should be used only by persons of training and experience who have knowledge of how to use and handle tools .

Protective equipment and personal precautions

Use suitable Personal Protective Equipment (PPE) .



Wear eye protection .



Wear ear protection .



Wear respiratory protection .



Router bits can be very sharp . We recommend that you wear protective gloves when fitting or changing router bits (Fig . C) .



It is not permitted to wear gloves when operating the router (Fig . D)!

Safe working practice

Maximum speed (n)

- The Maximum speed is 30,000 rpm max
- The maximum rotational speed marked on the router bits must not be exceeded .
- Router bits with visible cracks must not be used (Fig . E) .

Use

Mounting and fastening of router (Fig . C)



- Disconnect the router from the mains before fitting the router bits .
- Tools and tool bodies should be clamped in such a way to ensure they will not loosen during operation .
- The router bits should be clamped all the way to the marked point on the shank (Fig . C) .
- Care shall be taken of router bits to ensure that the clamping is by the shank of the tool and that the cutting edges are not in contact with each other or with the clamping elements .
- Fastening screws and nuts should be tightened using the appropriate spanners, etc . provided by the manufacturer .
- Extension of the spanner or tightening using hammer blows is not permitted .
- Clamping surfaces should be cleaned to remove dirt, grease, oil and water .
- Clamping screws must be tightened according to instructions .

Cleaning and care

Cleaning

- Router bits should be cleaned regularly .
- Remove the bearing .
- Clean the router bits with lubricating oil .
- Tighten and lubricate the bearing .
- Maintenance of router bits
- Repair or regrinding of the router bits is not permitted .
- Dull or damaged router bits must not be used .

Disposal

The packaging is made entirely of recyclable materials, which you may dispose of at local recycling facilities .
Contact your local refuse disposal authority for more details of how to dispose of your worn-out product .

Service

Service Great Britain

Tel .:08000569216

E-Mail: owim@lidl.co.uk

Service Ireland

Tel .:1800 200736

E-Mail: owim@lidl.ie

Service Northern Ireland

Tel .:0800 0927852

E-Mail: owim@lidl.ie



<http://www.lidl-service.com>

OWIM GmbH & Co. KG

Stiftsbergstraße 1

74167 Neckarsulm

GERMANY

Model No.: HG05077

Version: 03/2024

Documents / Resources

	PARKSIDE IAN471082 Router Bit Set [pdf] Instruction Manual IAN471082_2310, IAN471082 Router Bit Set, IAN471082, Router Bit Set, Bit Set
--	--

References

- [User Manual](#)

[Manuals+.](#) [Privacy Policy](#)

This website is an independent publication and is neither affiliated with nor endorsed by any of the trademark owners. The "Bluetooth®" word mark and logos are registered trademarks owned by Bluetooth SIG, Inc. The "Wi-Fi®" word mark and logos are registered trademarks owned by the Wi-Fi Alliance. Any use of these marks on this website does not imply any affiliation with or endorsement.