



PARI 22F81 LC PLUS Reusable Nebulizer Set Instruction Manual

[Home](#) » [PARI](#) » PARI 22F81 LC PLUS Reusable Nebulizer Set Instruction Manual 

Contents

- [1 PARI 22F81 LC PLUS Reusable Nebulizer Set](#)
- [2 Product Information](#)
- [3 Product Usage Instructions](#)
- [4 INSTRUCTIONS FOR USE](#)
- [5 ILLUSTRATIONS](#)
- [6 FEATURES AND FUNCTIONS](#)
- [7 GETTING STARTED](#)
- [8 NEBULIZER TREATMENT](#)
- [9 CLEANING THE PARI REUSABLE NEBULIZER](#)
- [10 WARRANTY FOR HOME CARE USE](#)
- [11 Documents / Resources](#)



PARI 22F81 LC PLUS Reusable Nebulizer Set



Product Information

- Product: Nebulizer
- Model Numbers: PART# 22F81, 22F80; PART# 22F51, 22F50
- Warranty: 6 months
- Patent: Canadian Patent 2,195,733
- Manufacturer: PARI

Product Usage Instructions

1. Ensure that the nebulizer is used by a single patient only.
2. Read all warnings and instructions before use.
3. Use the nebulizer only when prescribed by a physician and with the prescribed medication.
4. Use only compressors and tubing authorized by PARI. Other compressors and tubing may produce incorrect liter flow, resulting in improper treatment.
5. Thoroughly clean and dry all parts of the nebulizer after each treatment. Also, dry any moisture or condensation in the tubing at the end of every treatment.
6. Regularly disinfect or sterilize the nebulizer between treatments to prevent contamination.
7. Never use a nebulizer with a clogged nozzle. If clogging occurs, replace with the same model PARI Reusable Nebulizer.
8. Close supervision is necessary when using the nebulizer near children and physically or mentally impaired individuals. Never use when sleeping or drowsy.
9. Keep small children under close adult supervision during treatment to prevent choking hazards from small parts and strangulation hazards from the tubing.
10. Patients under the age of 4 or those with special needs should use a facemask instead of the valved mouthpiece.
11. Before use, check the PARI Reusable Nebulizer for proper assembly. Ensure all parts are seated firmly in place.

INSTRUCTIONS FOR USE

FOR SINGLE-PATIENT USE (ONE PERSON) ONLY

WARNING

CAUTION: U.S. Federal Law restricts this device to sale by or on the order by a physician. Use only when prescribed by a physician and with the prescribed medication. Read all warnings and instructions before use. Improper use can result in serious or fatal illness or injury. Nebulizer is not sterile.

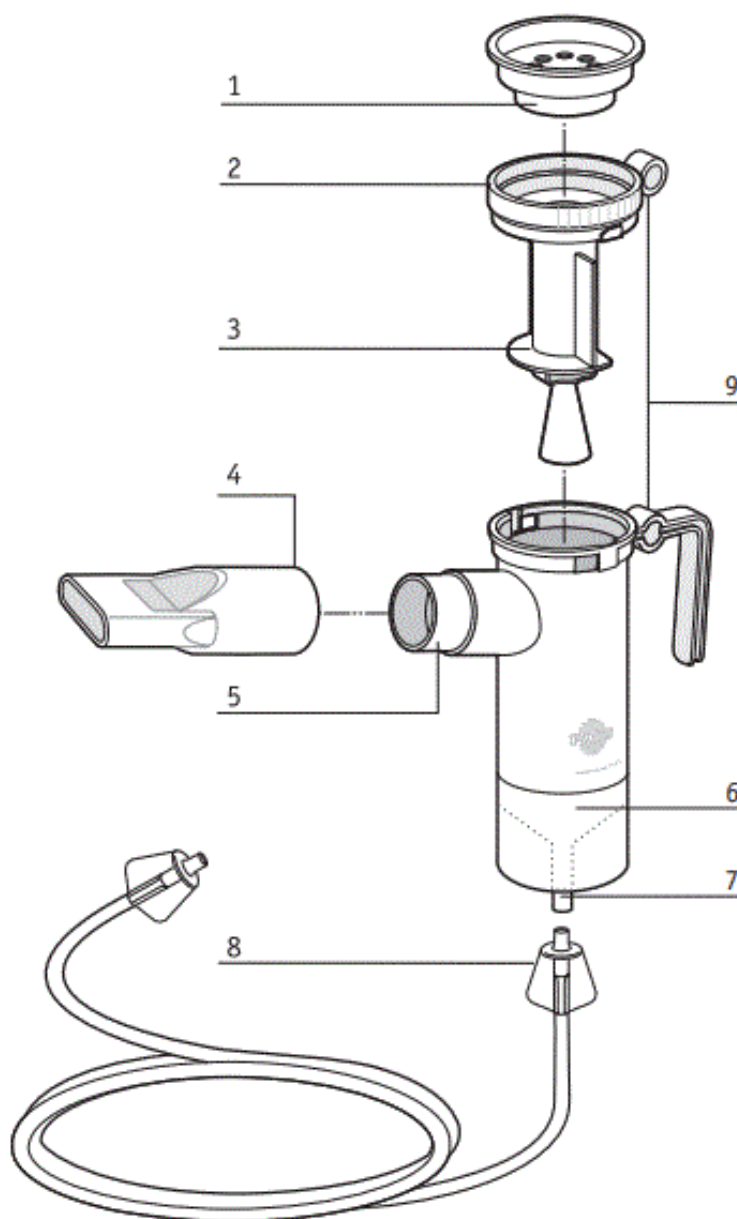
ILLUSTRATIONS

Before reading these Instructions For Use, open this page to expose the illustrations. When reading Section II on Set-Up, the illustrations on the left inside flap will match the illustrations in the text. These illustrations will be helpful to you as they are referenced throughout these Instructions For Use.

WARNING

Use only when prescribed by a physician and with the prescribed medication. Use only with compressors and tubing authorized by PARI. Other compressors and tubing may produce incorrect liter flow, resulting in improper treatment.

FEATURES AND FUNCTIONS



1. Inspiratory Valve Cap
2. Nebulizer Insert
3. Nebulizer Semi-Circle
4. Mouthpiece with Expiratory Valve
5. Nebulizer Outlet
6. Nebulizer Cup
7. Air Intake
8. Tubing (only provided with part#22F81, 22F51)
9. Alignment Rings (not on all nebulizers)

WARNING

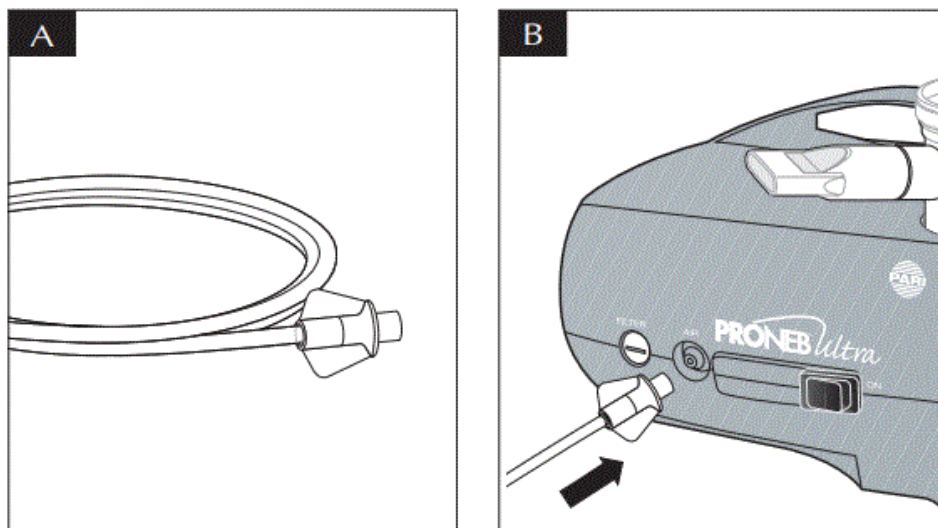
1. To reduce the risk of increased bacterial growth, infection, illness, or injury from contamination: thoroughly clean and dry all parts of the nebulizer and thoroughly dry any moisture or condensation in the tubing at the end of every treatment following the instructions below.
2. Cleaning the nebulizer after each treatment is not enough—you must regularly disinfect or sterilize the nebulizer between treatments to prevent serious or fatal illness caused by contamination of the nebulizer.
3. Never use a nebulizer with a clogged nozzle. If the nozzle is clogged, the aerosol mist will be reduced, altered or stopped, which will diminish or eliminate the effectiveness of the treatment. If clogging occurs, replace with the same model PARI Reusable Nebulizer.
4. Close supervision is necessary when this product is used by or near children and physically or mentally impaired. Never use when sleeping or drowsy.
5. This product contains small parts that may present a choking hazard to small children. The tubing also presents a strangulation hazard. ALWAYS USE CLOSE ADULT SUPERVISION WHEN ADMINISTERING A TREATMENT TO A CHILD. DO NOT LEAVE CHILD UNATTENDED DURING TREATMENT.
6. Patients under the age of 4 or any patients who have special needs should use a facemask instead of the valved mouthpiece.
7. Before use, check PARI Reusable Nebulizer for proper assembly. All parts should be seated firmly in place. Use of an improperly assembled nebulizer could diminish or prevent adequate delivery of medication and the effectiveness of the treatment.

GETTING STARTED

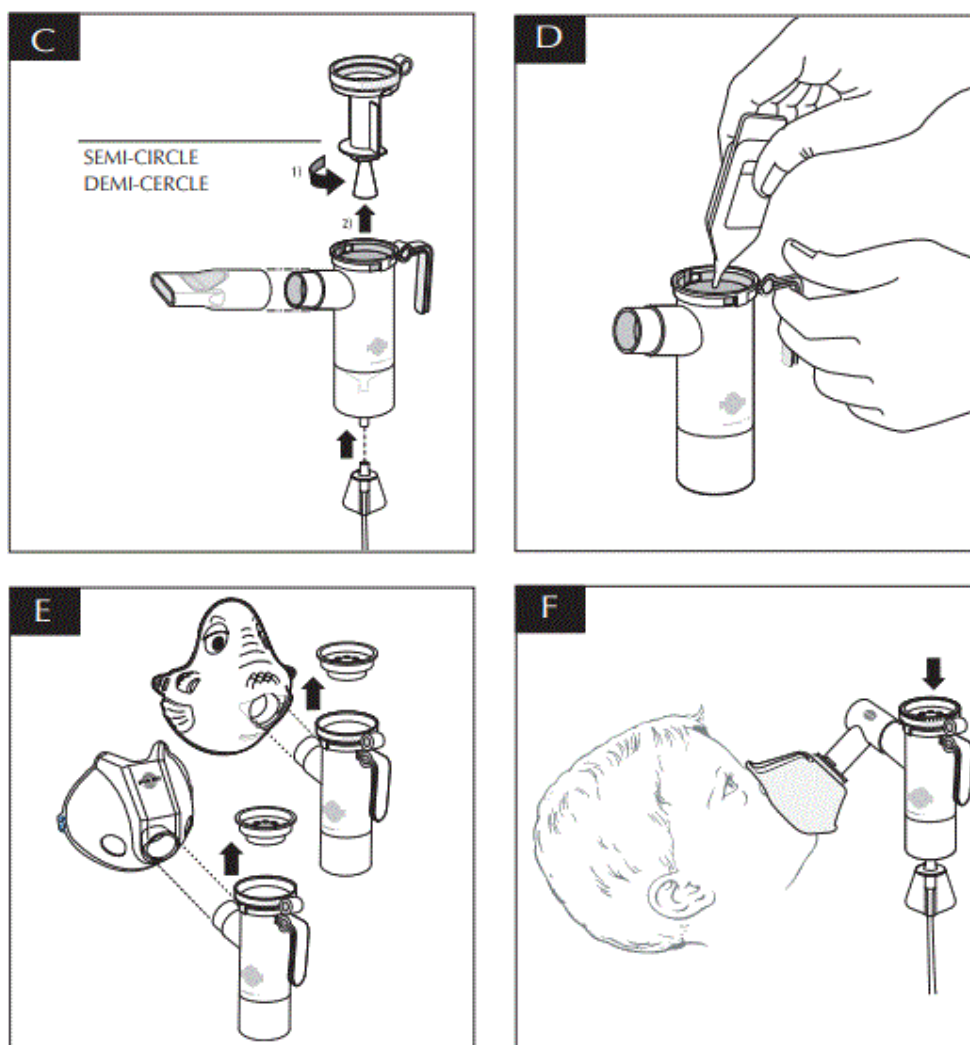
1. Make sure that you have all components illustrated on the front cover. If you did not receive all components, contact PARI's Patient Connection at 1.800.FAST.NEB.
2. Read these Instructions For Use. Make note of all warnings and safety instructions. If you do not understand any portion of these Instructions For Use, please call PARI Customer Service using the telephone numbers listed on the back page.
3. Your nebulizer should last from 6 months to 1 year with general use and we have included a sticker set to remind you to replace your nebulizer.
4. It is recommended that you buy a back-up nebulizer in case your PARI Reusable Nebulizer becomes lost, damaged or soiled.

SET-UP

The PARI Reusable Nebulizer was designed to be used with a PARI compressor or with the central air supply in a hospital. In order to achieve the specified droplet characteristics with the central air supply, a liter flow of 3.5-8 liters per minute must be selected.



1. Unwind the tubing (Fig.A).
2. Insert one end of the tubing directly to the compressor air outlet. Make sure the tubing is firmly inserted or attached (Fig.B). The tubing is designed to fit tightly.
3. Make sure nebulizer has been cleaned and/or disinfected before first use and after last treatment of the day (see page 8 & 9).



4. Remove the nebulizer insert by twisting counter-clockwise until it stops and lift up (Fig.C).
5. Pour prescribed medication into the nebulizer cup (Fig.D). Do not fill past the maximum fill line.

CCaaauuttiioonn:: Medication maximum fill for PARI LC PLUS® (part # 22F81) is 8 cc (ml) and the PARI LC STAR® (part #22F51) is 6 cc (ml).

- Replace the nebulizer insert. (Fig.C) The semi-circle should face the nebulizer outlet. The two alignment rings (not on all nebulizers) should now be lined up with each other (See page 5).
- If using a mask, attach mask directly to the nebulizer outlet (Fig.E & F).
NOTE: When using face mask, the inspiratory valve cap must be either in place or removed depending on the type of mask. See chart for proper position. Refer to figure E and F.
- If using the mouthpiece, attach the mouthpiece to the nebulizer outlet with the expiratory valve facing up. Then attach the inspiratory valve cap by pressing firmly into the nebulizer insert. The inspiratory valve cap is designed to fit snugly. Refer to PARI Reusable Nebulizer illustration on page 5.
- Firmly press the other end of the tubing onto the air intake on the bottom of the PARI Reusable Nebulizer. (Fig.C).

Type of Mask	PARI Part Number	Remove Inspiratory Valve Cap from Nebulizer Insert	Leave Inspiratory Valve Cap in place on Nebulizer Insert
Pediatric Rigid Aerosol Mask	14F15-PP	x	
Adult Aerosol Mask	14F20	x	
Bubbles the Fish II™ Pediatric Mask	44F7248	x	
PARI Baby™ Size #0 Nebulizer Set	22F90		x
PARI Baby™ Size #1 Nebulizer Set	22F91		x
PARI Baby™ Size #2 Nebulizer Set	22F92		x
PARI Baby™ Size #1 Mask Conversion Kit	44F2401		x
PARI Baby™ Size #2 Mask Conversion Kit	44F2402		x
PARI Baby™ Size #3 Mask Conversion Kit	44F3301		x

WARNING

Check PARI Reusable Nebulizer for proper assembly. All parts should be seated firmly in place. Use of an improperly assembled nebulizer could prevent adequate delivery of medication.

NEBULIZER TREATMENT

- Take your treatment as directed by your physician.
- The PARI Reusable Nebulizer has 2 valves that open and close during the nebulizer treatment when the mouthpiece is used. These valves help to maximize aerosol delivery and minimize medication waste.
- Sit in a relaxed, upright position and turn the compressor on.
- Place the mouthpiece on top of your tongue and close your lips around the mouthpiece. Take slow deep

- breaths to inhale the aerosol medication slowly. As you inhale, the valve on the inspiratory valve cap opens.
5. Exhale slowly through your mouth. As you exhale, the expiratory valve on the mouth-piece opens, releasing your exhaled aerosol. At the same time, the inspiratory valve closes on the top of the nebulizer which reduces waste.
 6. If using a mask, place the mask over the nose and mouth and inhale and exhale slowly.
 7. Continue steps 4 and 5 until the medication is gone or you hear a “sputtering”.
 8. Turn the compressor off.

CLEANING THE PARI REUSABLE NEBULIZER

1. Disconnect the tubing from the air intake on the bottom of the nebulizer cup.
2. If there is any moisture (condensation) in the tubing, let the compressor run with only the tubing attached for 2-3 minutes. The warm air from the compressor will dry out the tubing. Alternatively, you can dry the tubing by removing it from the compressor and hanging it up with the “ends down” to allow any moisture (condensation) to drain out and evaporate. Use a clean damp cloth to wipe the exterior of the tubing.
3. Disassemble reusable nebulizer parts as illustrated on page 5.
4. Wash all parts with warm water and liquid dish soap. **DO NOT WASH THE TUBING.**
5. Rinse the reusable nebulizer parts thoroughly with warm water and shake out water.
6. Air dry or hand dry nebulizer parts on a clean, lint-free cloth. Reassemble nebulizer when parts are dry and store.
7. You can also wash all parts of the reusable nebulizer on the top shelf of a dishwasher. Masks can not be washed safely in a dishwasher. **DO NOT WASH TUBING.** Place the reusable nebulizer parts in a dishwasher basket, then place the basket on the top rack of the dishwasher. Remove and dry the parts when the dishwasher cycle is complete.

WARNING, TO REDUCE RISK OF INFECTION:

1. Nebulizer for single patient use (one person) only. Do not share your nebulizer with other patients.
2. You must regularly disinfect or sterilize the nebulizer between treatments. Failure to do so could lead to serious or fatal illness.

For patients with Cystic Fibrosis, the CF Foundation recommends boiling for a full 10 minutes to disinfect.

DISINFECTING AND STERILIZING THE PARI REUSABLE NEBULIZER

1. Clean the nebulizer as described in section IV. Every other treatment day, soak all parts of the PARI Reusable Nebulizer (except tubing and mask) in a solution of 1 part distilled white vinegar and 3 parts hot tap water for 1 hour. You can substitute respiratory equipment disinfectant (like Control III®) for distilled white vinegar (follow manufacturer’s instructions for mixing).
2. Rinse all parts of the PARI Reusable Nebulizer thoroughly with warm tap water and dry with a clean, lint-free cloth. Discard the vinegar solution when disinfection is complete.
3. The PARI Reusable Nebulizer parts (except tubing and mask) may also be sterilized by boiling them in clean pot of water for a full 10 minutes.
4. Hospitals and clinics can sterilize the PARI Reusable Nebulizer parts (except mask and tubing) by autoclaving

(a maximum of 277° F or 126° C), follow autoclave manufacturer's instructions.

5. Dry parts on a clean, lint-free cloth.

CONTROL III® IS A REGISTERED TRADEMARK OF MARIL PRODUCTS, INC.

THE PARI REUSABLE NEBULIZER INCLUDES A 6 MONTH LIMITED

WARRANTY FOR HOME CARE USE

PROCEDURE FOR RETURNING THE PARI REUSABLE NEBULIZER

1. Contact PARI Patient Connection at 1.800.FAST.NEB for shipping instructions.
2. Clean, disinfect and/or sterilize the PARI Reusable Nebulizer as indicated on the previous page. Dry the nebulizer and place in a plastic bag.
3. In writing, describe the malfunction or symptoms of the nebulizer. Include your full name, address and daytime telephone number.
4. Send written description and nebulizer in a protected box to the address provided by Patient Connection.

CANADIAN PATENT 2,195,733

PARI RESPIRATORY EQUIPMENT, INC. 2943 oak Lake Blvd, Midlothian, VA 23112-3998 Tel 1.804.253.PAR1 (7274) Fax 1.800.727.4112

www.PAR1.com E-mail ProductInfo@PARI.com Respiratory CEU programs available © 2004 PARI Respiratory Equipment, Inc.

Documents / Resources



[PARI 22F81 LC PLUS Reusable Nebulizer Set](#) [pdf] Instruction Manual

22F81, 22F80, 22F51, 22F50, 22F81 LC PLUS Reusable Nebulizer Set, LC PLUS Reusable Nebulizer Set, PLUS Reusable Nebulizer Set, Reusable Nebulizer Set, Nebulizer Set, Set