

Parani
MOTORCYCLE BLUETOOTH®
A20
Motorcycle
Intercom



Parani A20 Motorcycle Intercom User Guide

[Home](#) » [Parani](#) » Parani A20 Motorcycle Intercom User Guide 

Contents

- [1 Parani A20 Motorcycle Intercom](#)
- [2 Product Information](#)
- [3 Product Usage Instructions](#)
- [4 PRODUCT FEATURES](#)
- [5 BEFORE STARTING](#)
- [6 INSTALLING THE HEADSET ON YOUR HELMET](#)
- [7 GETTING STARTED](#)
- [8 PAIRING YOUR HEADSET WITH OTHER BLUETOOTH DEVICES](#)
- [9 MOBILE PHONE USAGE](#)
- [10 BLUETOOTH INTERCOM](#)
- [11 GENERAL SETTINGS](#)
- [12 TROUBLESHOOTING](#)
- [13 Documents / Resources](#)
 - [13.1 References](#)

Parani
MOTORCYCLE BLUETOOTH®

Parani A20 Motorcycle Intercom



Product Information

Specifications

- **Intercom Range:** Up to 1 km (0.6 mi)*
- **Intercom Capability:** Four-way Intercom
- **Display:** LCD Display
- **Firmware:** Upgradeable *in open terrain

Product Usage Instructions

Installing the Headset on Your Helmet

Before installing the headset, choose between the clamp and the glued surface mounting adapter:

Using the Clamp

1. Insert the main module into the clamp using the two connecting slots on the back.
2. Insert the headset into the helmet using the clamp.
3. Insert the speaker and microphone plug into the headset.

Using the Glued Surface Mounting Adapter

1. Insert the main module into the glued surface mounting adapter using the two connecting slots on the back.
2. Insert the speaker and microphone plug into the headset.
3. Remove the cover of the adhesive sticker on the back to glue the headset onto the helmet.
4. Attach the headset on the left side of the helmet.

Installing the Speakers

1. Attach the hook and loop fasteners for speakers to the ear pockets inside the helmet.
2. Attach the speakers to the hook and loop fasteners inside the helmet.

FAQ

- **How do I pair my headset with other Bluetooth devices?**

To pair your headset with other Bluetooth devices, follow the instructions provided in section 4 of the user manual.

- **How can I troubleshoot issues with my headset?**

If you encounter any problems with your headset, refer to the troubleshooting section in the user manual for steps on fault reset and factory reset.

PRODUCT FEATURES

Blast your favorite tunes, talk over the intercom with your buddies, hear directions from your GPS and more, all through your A20 Bluetooth® headset. With built-in Bluetooth® capabilities, HD Intercom, technology has never felt so minimal or freeing.



Bluetooth® Integrated



Intercom up to 1 km (0.6 mi)*



Four-way Intercom



LCD Display



Firmware Upgradeable

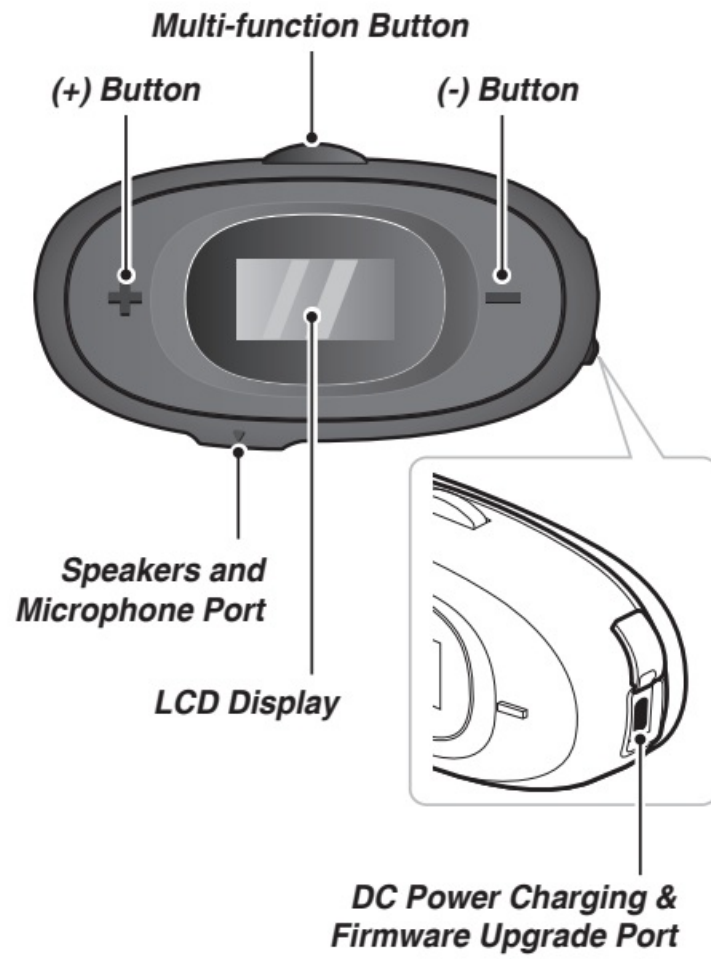
*in open terrain

GETTING STARTED

Update this product for free with the latest firmware to fully enjoy the new advanced features built into this product. Visit parani.com to see how to update your product.

BEFORE STARTING

Product Details



Package Contents

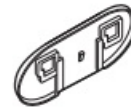
- **Headset Main Unit**



- **Clamp**



- **Glued Surface Mounting Adapter**



- **Speakers and Microphone Cable**



- **Speaker Pads (2)**



- **Hook and Loop Fasteners for Speakers (2)**



- **Wired Boom Microphone**



- **Microphone sponge (2)**



- **Hook and Loop Fastener for Boom Microphone**



- **Wired Boom Microphone Holder**



- **Hook and Loop Fastener for Boom Microphone Holder**



Wired Microphone

- **Wired Microphone**



- **Hook and Loop Fastener for Wired Microphone**



Others

- **USB Power & Data Cable (USB-C)**

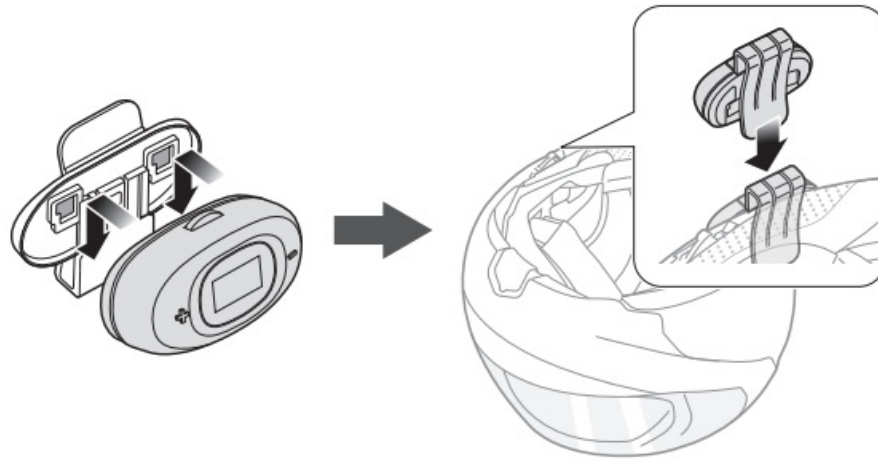


INSTALLING THE HEADSET ON YOUR HELMET

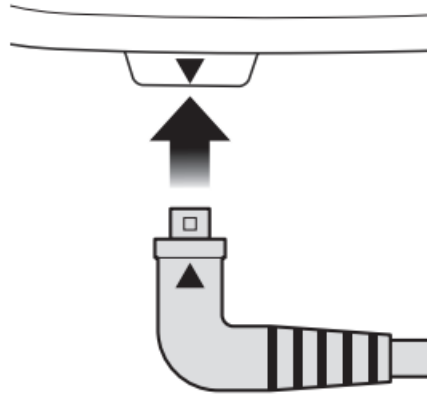
Before installing the headset, you need to choose between the clamp and the glued surface mounting adapter. To install the headset to the helmet, follow the steps below:

Using the Clamp

1. Insert the main module into the clamp using the two connecting slots on the back.
2. Insert the headset into the helmet using the clamp.

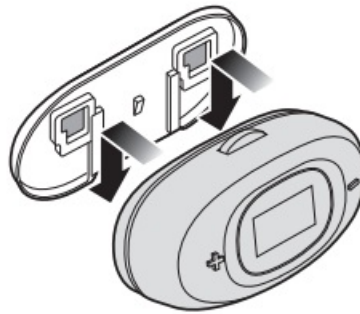


3. Insert the speaker and microphone plug into the headset.



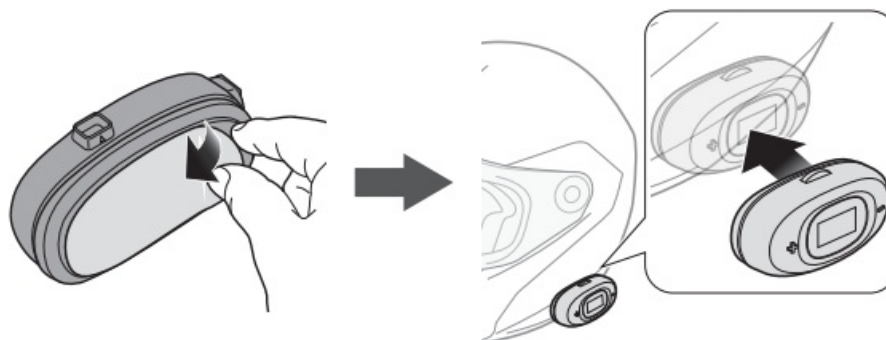
Using the Glued Surface Mounting Adapter

1. Insert the main module into the glued surface mounting adapter using the two connecting slots on the back.

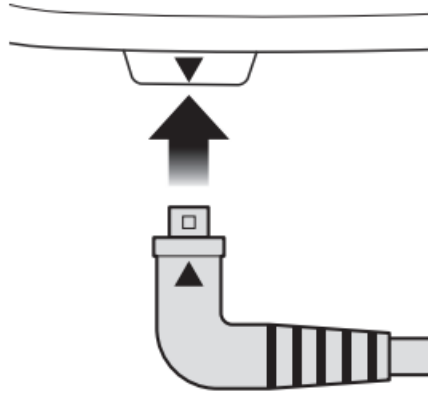


2. Remove the cover of the adhesive sticker on the back to glue the headset on to the helmet.

3. Attach the headset on the left side of the helmet.

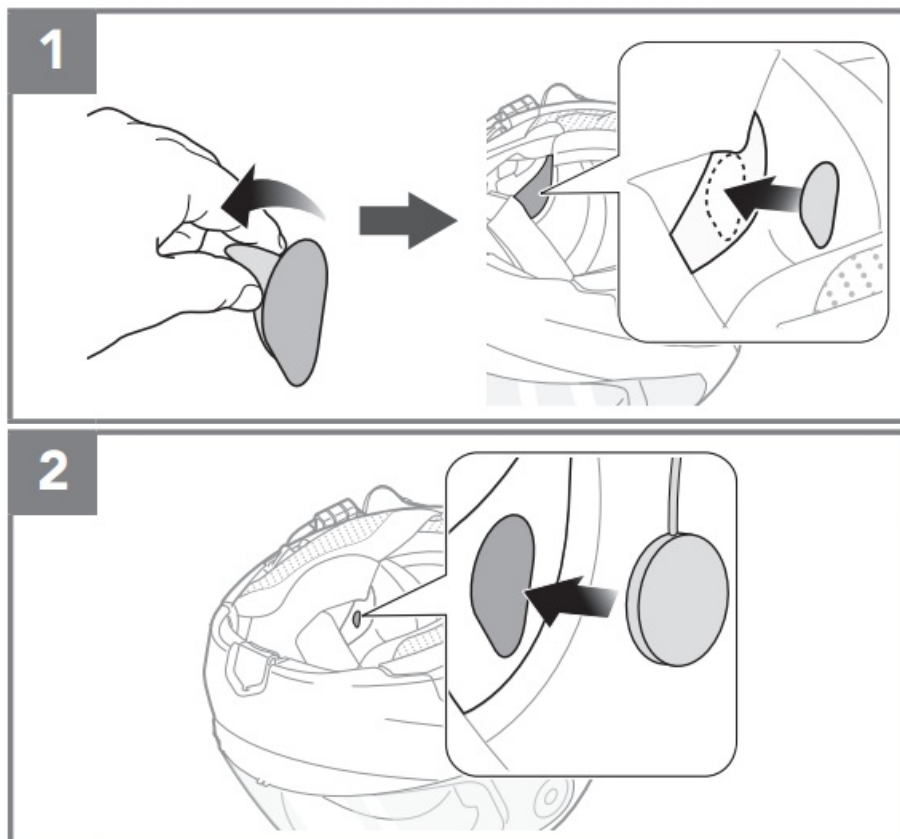


4. Insert the speaker and microphone plug into the headset.



Installing the Speakers

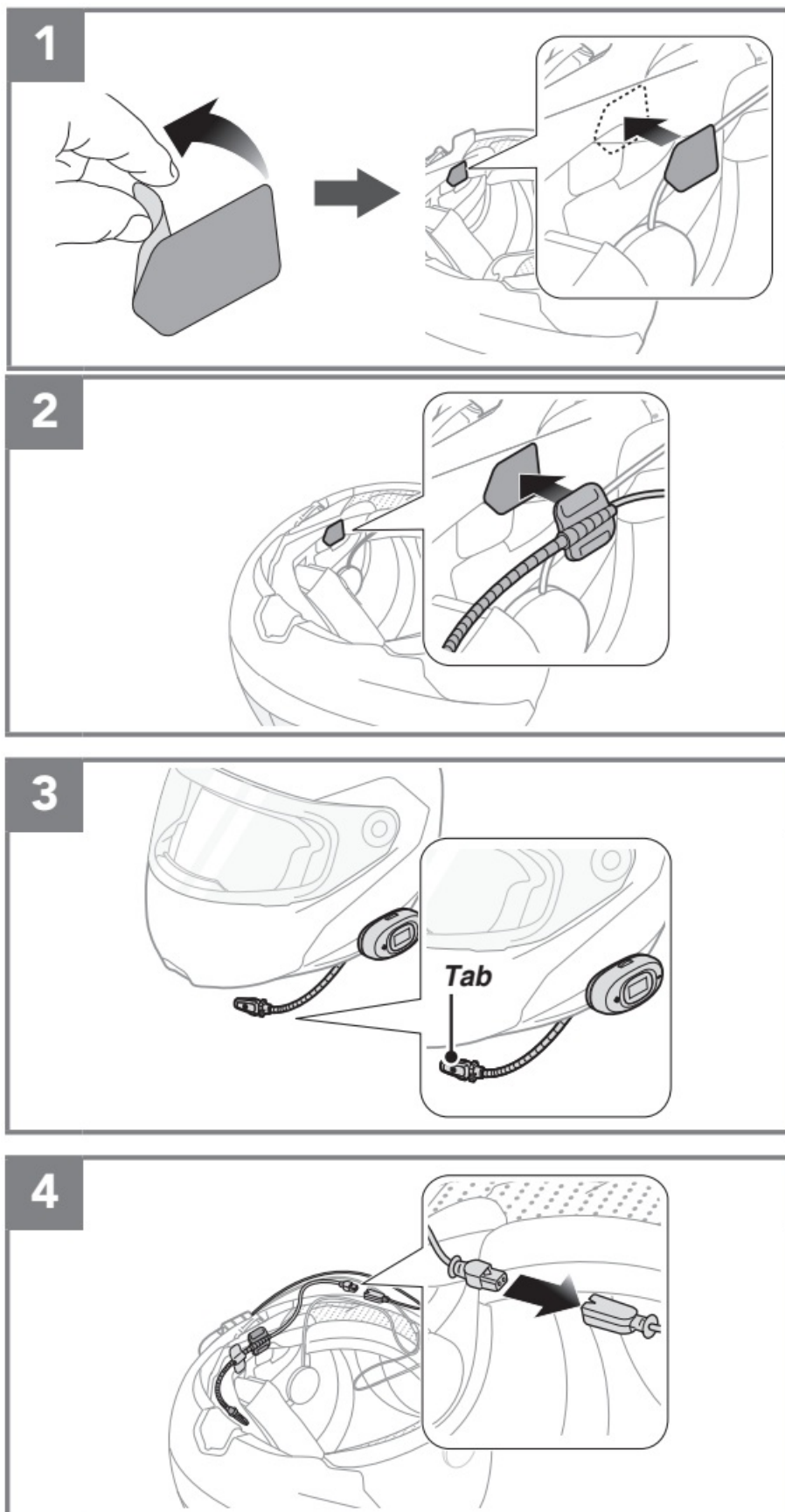
1. Attach the hook and loop fasteners for speakers to the ear pockets inside the helmet.
2. Attach the speakers to the hook and loop fasteners for speakers inside the helmet.



Note: If the helmet has deep ear pockets, you can use the speaker pads to bring the speakers closer to your ears.

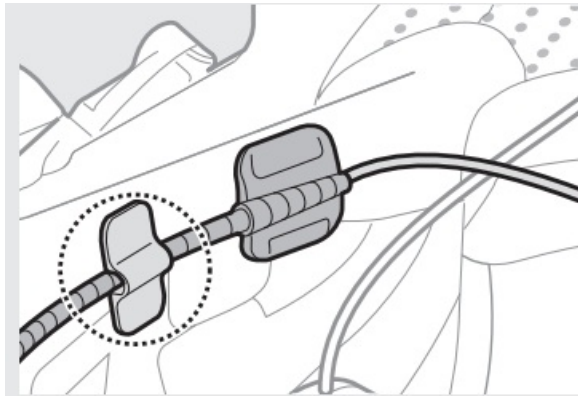
Installing the Wired Boom Microphone

1. Attach the hook and loop fastener for wired boom microphone on the inside surface of the left external shell.
2. Attach the wired boom microphone's mounting plate to the hook and loop fastener.
3. Adjust the head of the microphone so that the tab is facing away from your mouth.
4. Align the arrows on the main unit and microphone cables and insert the microphone cable into the microphone connector.

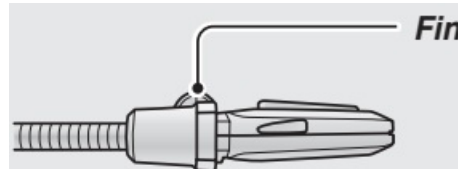


Note:

- You can use the boom microphone holder after attaching the hook and loop fastener for boom microphone holder on it to ensure secure installation.



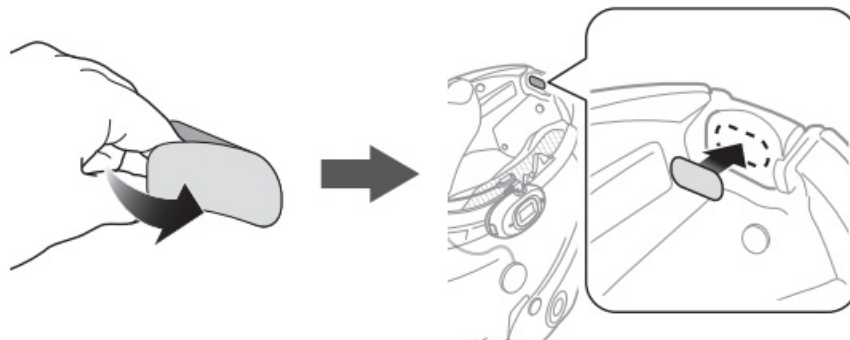
- Make sure that the microphone is located properly close to your mouth when you wear the helmet. Adjust the direction of the microphone so that the fin side of the microphone is facing outward, away from your lips.



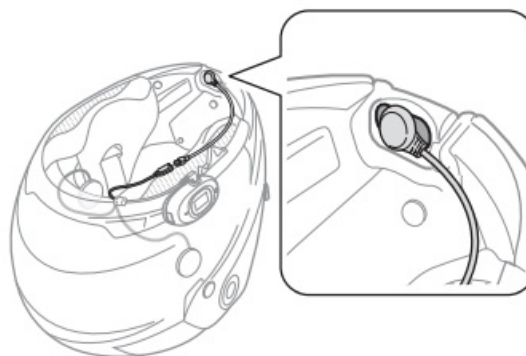
Installing the Wired Microphone

If you have a full face helmet, you can use the wired microphone.

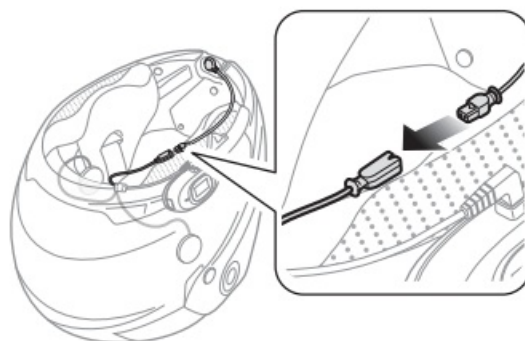
1. Peel off the cover of the hook and loop fastener for wired microphone to expose the adhesive tape. Then, attach the hook and loop fastener on the inside of the helmet's chin guard.



2. Attach the wired microphone to the hook and loop fastener for wired microphone.

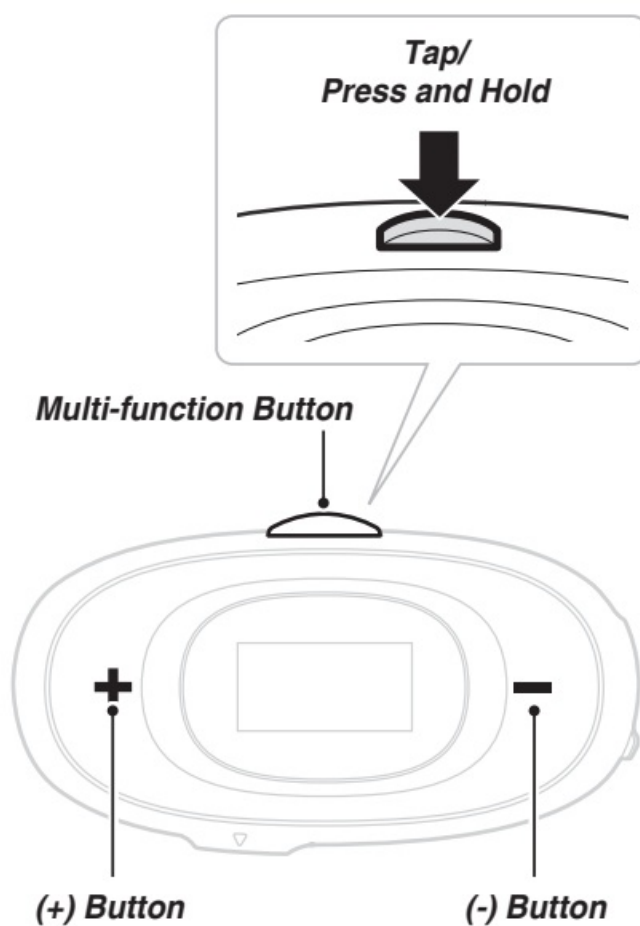


3. Align the arrows on the main unit and microphone cables and insert the microphone cable into the microphone connector.

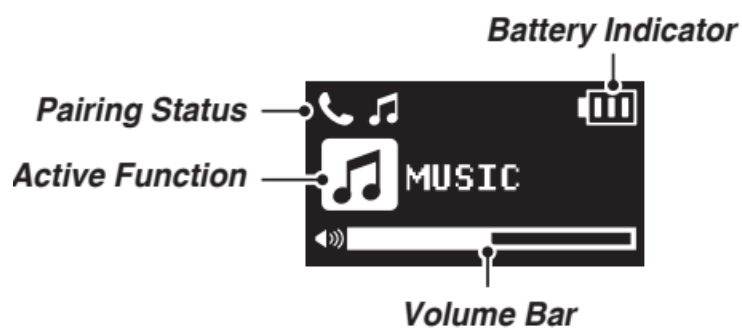


GETTING STARTED

Button

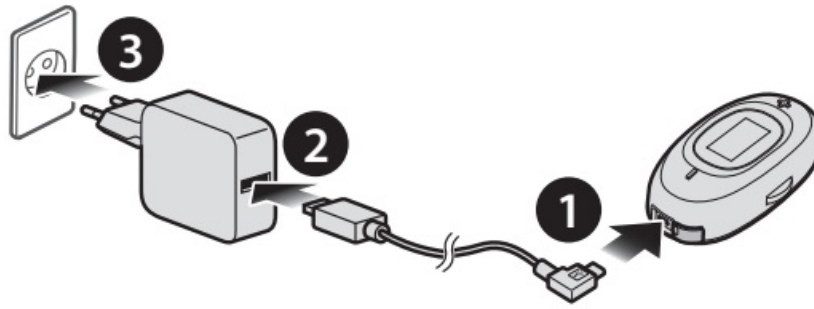


LCD Display



Charging the Headset

The headset can be charged using many common methods via the supplied USB power & data cable. Depending upon the charging method, the headset will be fully charged in about 2.5 hours.



It takes about 2.5 hours to be completely charged.

-

Charging Status LCD



Note: Any 3rd party USB charger can be used with Parani products if the charger is approved by either the FCC, CE, IC or other locally approved agencies that Parani accepts.

Powering On and Off

- To power on the headset, press and hold the (+) Button and (-) Button for 1 second.



- To power off the headset, tap the (+) Button and (-) Button.



Adjusting the Volume

You can raise or lower the volume by tapping the (+) Button or the (-) Button. Volume is set and maintained independently at different levels for each audio source (i.e., phone, intercom), even when the headset is rebooted.

Downloadable Parani Software

1. Parani Device Manager

The Parani Device Manager allows you to upgrade firmware and configure settings directly from your PC. For more information on downloading the Parani Device Manager, please visit parani.com.

PAIRING YOUR HEADSET WITH OTHER BLUETOOTH DEVICES

Before using the headset with other Bluetooth devices for the first time, they will need to be “paired.” This enables them to recognize and communicate with one another whenever they are within range. The headset can pair with multiple Bluetooth devices such as mobile phone, MP3 player, or GPS via Phone Pairing, Second Mobile Phone Pairing. The headset can also be paired with another Parani headset.

Phone Pairing

There are three ways to pair the phone.

1. Initially Pairing the A20

The headset will automatically enter the phone pairing mode when you initially turn on the headset or in the following situations:

- Rebooting after executing the Factory Reset feature; or
- Rebooting after executing the Delete All Pairings feature.

1. Press and hold the (+) Button and (-) Button for 1 second. You will hear a voice prompt, “Phone pairing”.



2. On your smartphone, search for Parani A20.
3. Enter 0000 for the PIN. Some smartphones may not ask for PIN.

Note:

- The phone pairing mode lasts for 3 minutes.
- To cancel phone pairing, tap the Multi-function Button.

2. Pairing When the A20 is Turned Off

1. While the headset is off, press and hold the (+) Button and (-) Button for 5 seconds. You will hear a voice prompt, “Phone pairing”.



2. On your smartphone, search for Parani A20.
3. Enter 0000 for the PIN. Some smartphones may not ask for PIN.

3. Pairing When the A20 is Turned On

1. While the headset is on, press and hold the Multi-function Button for 8 seconds. You will hear a voice

prompt, "Phone pairing".



2. On your smartphone, search for Parani A20.
3. Enter 0000 for the PIN. Some smartphones may not ask for PIN.

Second Mobile Phone Pairing

1. To enter the configuration menu, press and hold the Multi-function Button for 12 seconds until you hear a voice prompt, "Configuration menu".
2. Tap the (+) Button until you hear a voice prompt, "Second mobile phone pairing".



3. On your smartphone, search for Parani A20.
4. Enter 0000 for the PIN. Some smartphones may not ask for the PIN.

MOBILE PHONE USAGE

Using Phone Functions

- **Answering a call**

Tap the Multi-function Button.

- **Ending a call**

Tap the Multi-function Button.

- **Rejecting a call**

Press and hold the Multi-function Button for 2 seconds.

- **Make a Call with Voice dialer**

Press and hold the Multi-function Button for 3 seconds in stand-by mode to activate the voice dialer of your mobile phone.



Speed Dialing

1. Assigning Speed Dial Presets

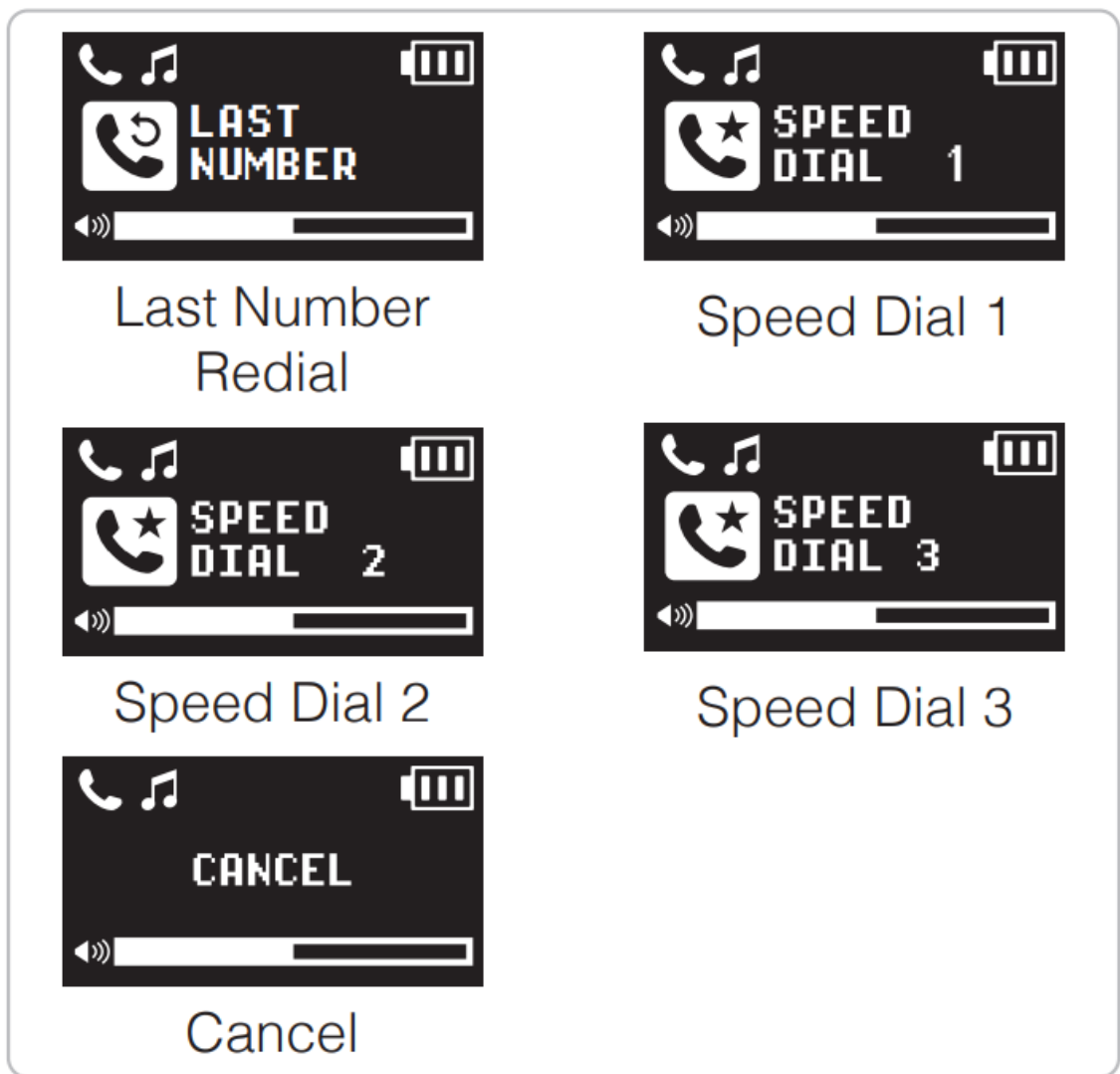
You need to assign speed dial numbers before using the speed dial. Speed Dial Presets could be assigned in the configuration menu.

2. Using Speed Dial Presets

1. Press and hold the (+) Button for 3 seconds and you will hear a voice prompt, "Speed dial".



2. Tap the (+) Button or the (-) Button to navigate between the menus. You will hear prompts for each menu item.
3. Tap the Multi-function Button to select a voice menu among the followings:



4. To redial the last number called, tap the Multi-function Button when you hear a voice prompt, “Last number redial”.
5. To call one of the speed dials, tap the Multi-function Button when you hear a voice prompt, “Speed Dial (#)”.
6. If you want to exit the speed dial immediately, tap the (+) Button or the (-) Button until you hear a voice prompt, “Cancel”, and tap the Multi-function Button.

STEREO MUSIC

- **Play/Pause music**

Press and hold the Multi-function Button for 1 second.

- **Track forward/back**

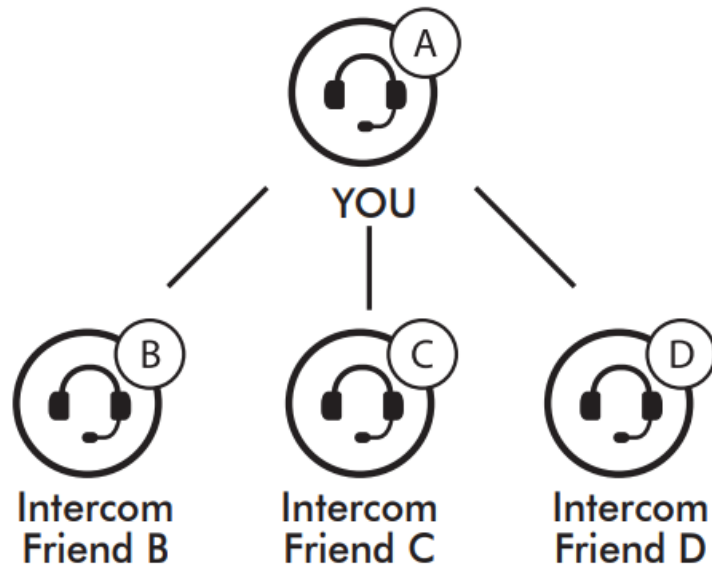
Press and hold the (+) Button or the (-) Button for 1 second.



BLUETOOTH INTERCOM

Intercom Pairing

The headset can be paired with up to three other Parani headsets for Bluetooth intercom conversation.



1. Press and hold the Multi-function Button of the headset A and B for 5 seconds until you hear a voice prompt, "Intercom pairing".
2. Tap the Multi-function Button on either headset and wait until the intercom connection is automatically established.



3. Repeat steps 1 and 2 to pair with Intercom Friends C & D.
4. The intercom pairing queue is 'Last-Come, First-Served'. If a headset has multiple paired headsets for intercom conversations, the last paired headset is set as first intercom friend. The previous intercom friend becomes second intercom friend, and third intercom friend.

Last-Come, First-Served



YOU



Intercom
Friend 1



YOU



Intercom
Friend 1



Intercom
Friend 2



YOU



Intercom
Friend 1



Intercom
Friend 2



Intercom
Friend 3

Two-way Intercom

You can start/end an intercom conversation with one of any intercom friends by tapping the Multi-function Button.



Intercom
Friend 1

= Tap the **Multi-function Button**.



Intercom
Friend 2

= Double tap the **Multi-function Button**.



Intercom
Friend 3

= Triple tap the **Multi-function Button**.

1. HD Intercom

HD Intercom enhances the two-way intercom audio from normal quality to HD quality. When you enter into a Multi-Way Intercom, HD Intercom will be automatically disabled. If this feature is disabled, the intercom audio will change to normal quality.

Note:

- HD intercom is only active for two-way intercom.
- HD intercom will become temporarily disabled when Audio Multitasking is enabled.

Multi-Way Intercom

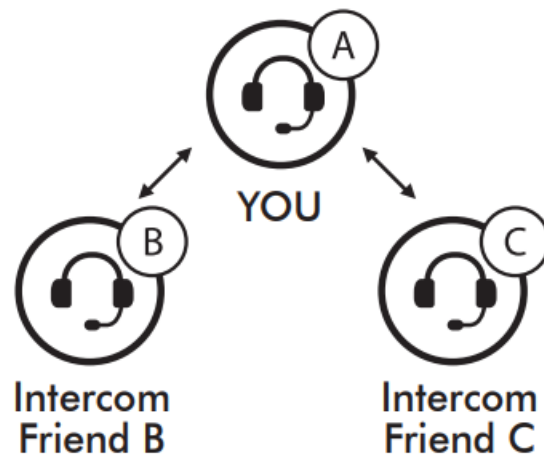
Multi-Way Intercom enables conference-call-style conversations with up to three intercom friends at the same time. While Multi-Way Intercom is in progress, mobile phone connection is temporarily disconnected. However, as soon as Multi-Way Intercom terminates, the mobile phone connection will be reestablished.



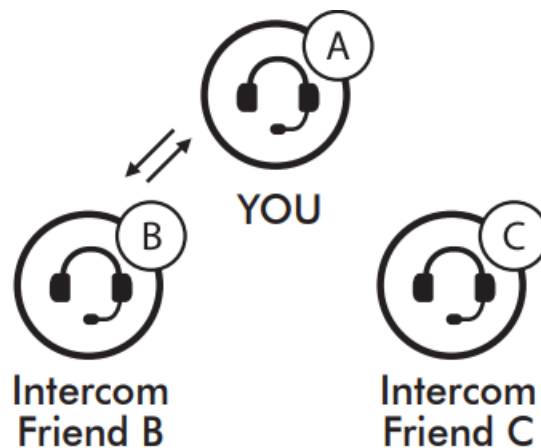
1. Start a Three-Way Intercom Conference

You (A) can have a three-way conference intercom with two other intercom friends (B & C) by establishing two intercom connections at the same time.

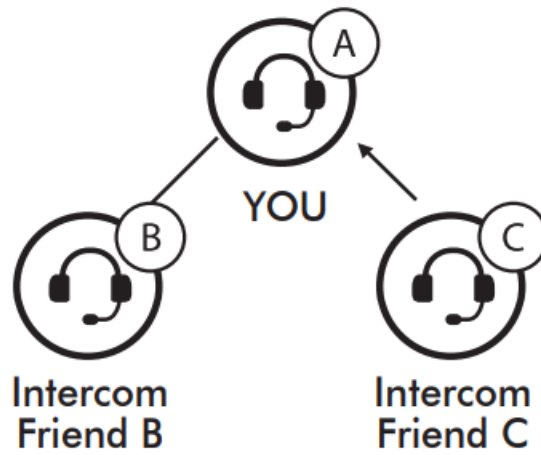
1. You (A) need to be paired with two other friends (B & C) for three-way conference intercom.



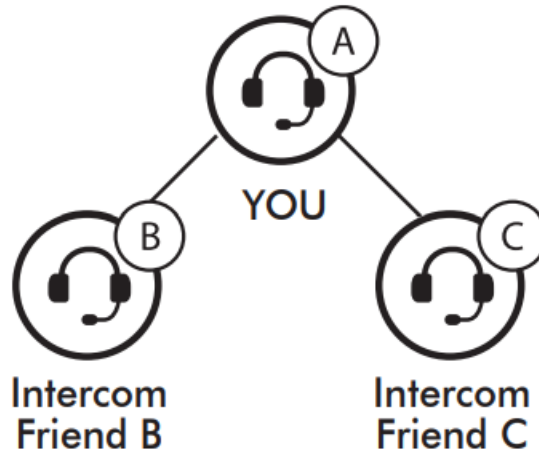
2. Start an intercom conversation with one of the two friends in your intercom group. For example, you (A) may start an intercom conversation with intercom friend (B). Or intercom friend (B) may start an intercom call with you (A).



3. The second intercom friend (C) may join the intercom by making an intercom call to you (A).

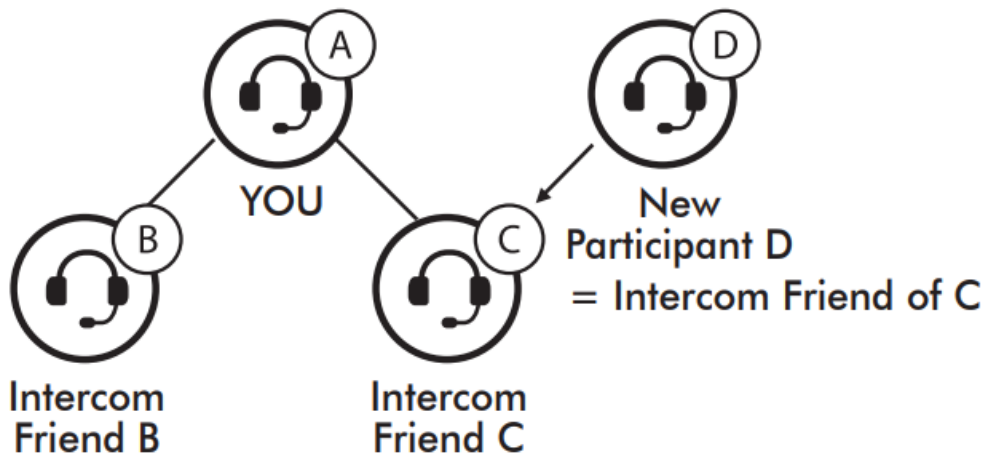


4. Now you (A) and two intercom friends (B & C) are having a three-way conference intercom.



2. Starting a Four-Way Intercom Conference

You can have four-way conference intercom with three other intercom friends by adding one more intercom participant to the three-way intercom. A new participant (D) can make it a Four-Way Intercom Conference by making an intercom call to either (B) or (C).



3. Ending Multi-Way Intercom

You can completely terminate the conference intercom or just disconnect an intercom connection with one of your active Intercom Friends.

- **Terminate all intercom connections**

Press and hold the Multi-function Button for 3 seconds.

- **Disconnect the intercom connection with one of the intercom friends**

When you disconnect the second friend (C), you will be disconnected with the third participant (D) as well.

This is because the third participant (D) is connected with you via the second friend (C). Disconnect (B) :

Tap the Multi-function Button. Disconnect (C) & (D) : Double tap the Multi-function Button.

GENERAL SETTINGS

Function Priority

The headset operates in the following order of priority:

A lower priority function is always interrupted by a higher priority function.




Configuration Menu




You can set the configuration of the headset by the voice menu instruction described below.


1. Press and hold the Multi-function Button for 12 seconds until you hear a voice prompt, "Configuration menu".



2. Tap the (+) Button or the (-) Button to navigate between the menus. You will hear voice prompts for each menu item.
3. You can enable/disable the feature or execute the command by tapping the Multi-function Button.

Configuration Setting	Enable/Disable or Execute
 Second Mobile Phone Pairing	None
 Speed Dial	Execute
 Voice Prompt	Enable/Disable

Configuration Setting	Enable/Disable or Execute
 Delete All Pairings	Execute
 Universal Intercom	Execute
 Factory Reset	Execute

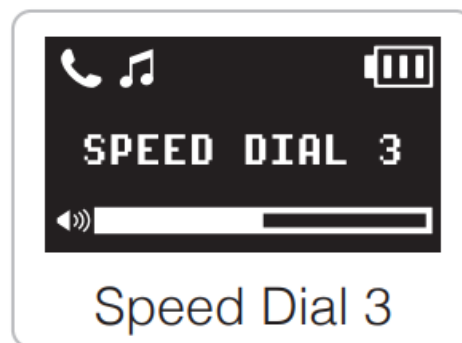
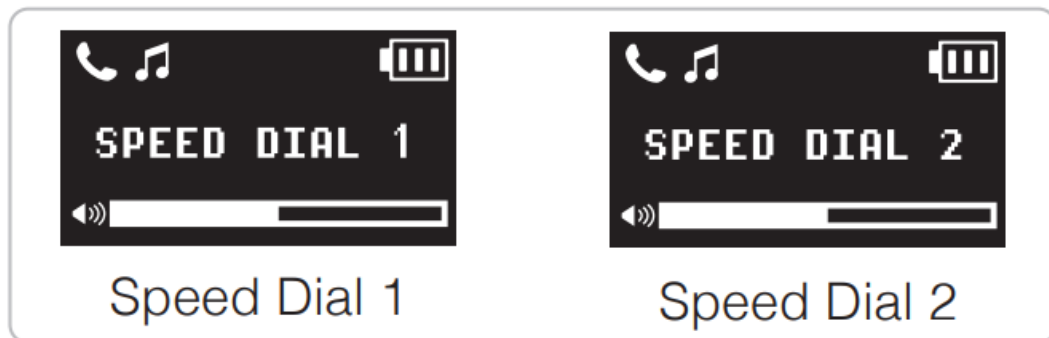
Configuration Setting	Enable/Disable or Execute
 Exit Configuration	Execute

Assigning Speed Dial

1. To assign a phone number as a speed dial, tap the (+) Button until you hear a voice prompt, “Speed dial”.



2. Tap the Multi-function Button, and you will hear a voice prompt, “Speed dial one” and “Phone connected”. Tap the (+) Button or (-) Button to select one of three speed dial numbers by hearing a voice prompt, “Speed dial (#)”.



3. Call a phone number you want to assign and you will hear a voice prompt, “Save speed dial (#)”. The phone number is automatically assigned to the selected speed dial number. Then the phone call will hang up immediately.
4. To exit the menu, tap the (+) Button or (-) Button until you hear a voice prompt, “Cancel”, and tap the Multi-function Button to confirm. You will then hear a voice prompt, “Cancel”.



Voice Prompt (Default: Enable)

You can disable voice prompts by configuration setting, but the following voice prompts are always on.

- Voice prompts for configuration setting menu
- Voice prompts for factory reset
- Voice prompts for speed dial

Delete All Pairings

Delete all Bluetooth pairing information.

Universal Intercom

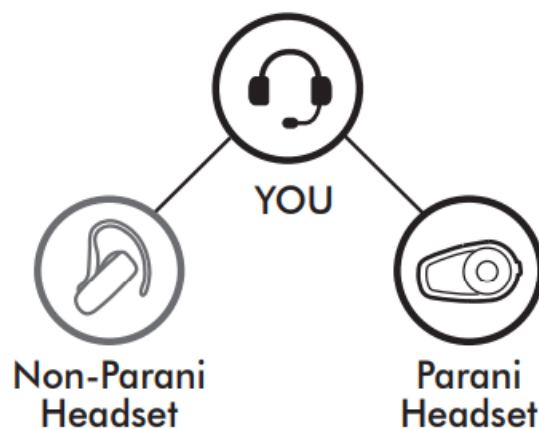
Universal Intercom allows you to have intercom conversations with users of non-Parani Bluetooth headsets. Non-Parani Bluetooth headsets can be connected to the Parani Bluetooth headset if they support the Bluetooth Hands-Free Profile (HFP). You can pair the headset with only one non-Parani headset at a time. The intercom distance depends on the performance of the Bluetooth headset to which it's connected.

When a non-Parani Bluetooth headset is paired with the headset, if another Bluetooth device is paired via Second Mobile Phone Pairing, it will be disconnected.

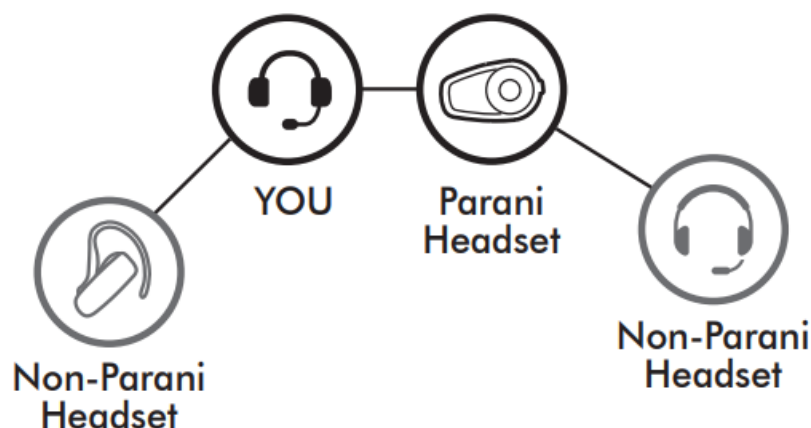
1. Press and hold the Multi-function Button for 12 seconds to enter the headset configuration menu. Tap the (+) Button or the (-) Button until you hear a voice prompt, "Universal intercom pairing".
2. Tap the Multi-function Button to enter into Universal Intercom Pairing mode.
3. Put the non-Parani Bluetooth headset in Pairing Mode. The headset will automatically pair with a non-Parani Bluetooth headset.
4. You can have a Two-Way Intercom or Multi-Way Intercom communication with up to three intercom friends using non-Parani headsets by following the procedures described below.

Note: You can have two-way or multi-way universal intercom communication using the same way as you do in a normal two-way and multi-way intercom. Please refer to section 7.2: "Two-way Intercom" and 7.3: "Multi-Way Intercom".

Example of a Three-way Universal Intercom



Example of a Four-way Universal Intercom



Note: Some non-Parani headsets may not support multi-way universal intercom.

Software Configuration Setting

You can change the settings of the headset through Parani Device Manager.

1. Audio Multitasking™ (Default: Disable)

Audio Multitasking allows you to hear the audio from two features simultaneously. When Audio Multitasking is enabled, intercom conversation can be overlaid with audio from the music or GPS app instructions from a smartphone in the background with reduced volume. Increasing or decreasing the volume of the audio in the foreground will also increase or decrease the volume of the overlaid audio in the background. The volume of the foreground audio can be adjusted using the headset. How much background audio that is heard can be adjusted using the Parani Device Manager.

Note:

1. Audio Multitasking will be activated during a two-way intercom conversation with a headset that also supports this feature.
2. When Audio Multitasking is disabled, the background audio source will return to its independent volume level.
3. For Audio Multitasking to work properly, you need to power the headset off and on. Please restart the headset.

2. Background Volume (Default: Level 5)

The Background Volume can be adjustable only when the Audio Multitasking turns on. Level 9 is the highest volume and 0 is the lowest.

Firmware Upgrades

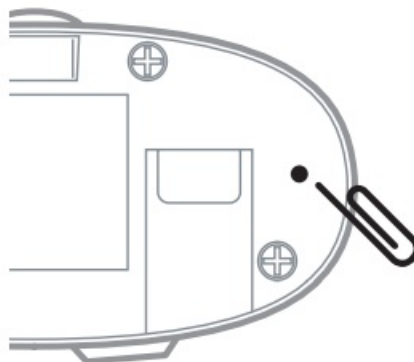
The headset supports firmware upgrades. You can update the firmware using the Parani Device Manager. Please visit the Parani website at parani.com to check the latest software downloads.

TROUBLESHOOTING

Fault Reset

When the headset is not working properly, you can easily reset the unit:

1. Locate the Pin-hole reset button below on the back of the main unit.
2. Gently insert a paperclip into the hole and tap the Fault Reset Button with light pressure.




3. The headset will shut down.

Note: Fault Reset will not restore the headset to factory default settings.

Copyright 2024 Sena Technologies Co., Ltd.
All rights reserved.
© 1998–2024 Sena Technologies Co., Ltd. All rights reserved.
Sena Technologies Co., Ltd. reserves the right to make any changes and improvements to its product without providing prior notice.

Documents / Resources

	<p>Parani A20 Motorcycle Intercom [pdf] User Guide A20 Motorcycle Intercom, A20, Motorcycle Intercom, Intercom</p>
---	--

References

- [🌐 Parani | Bluetooth Smart Helmet Headset – Parani US](#)
- [User Manual](#)

[Manuals+](#), [Privacy Policy](#)

This website is an independent publication and is neither affiliated with nor endorsed by any of the trademark owners. The "Bluetooth®" word mark and logos are registered trademarks owned by Bluetooth SIG, Inc. The "Wi-Fi®" word mark and logos are registered trademarks owned by the Wi-Fi Alliance. Any use of these marks on this website does not imply any affiliation with or endorsement.