


PARALLAX INC 40012 Ag9050 Power over Ethernet Module Instruction Manual

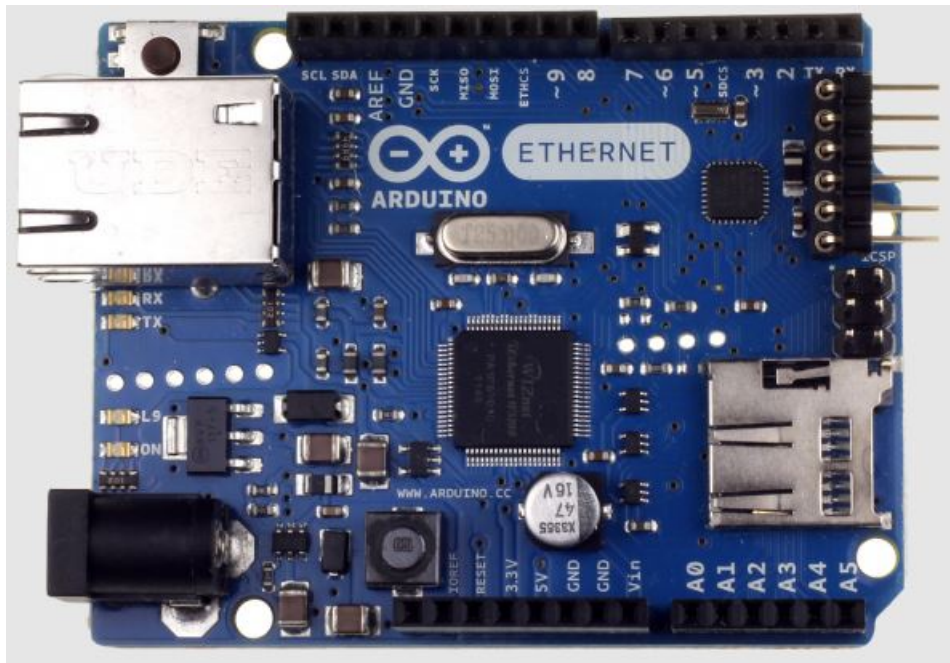
[Home](#) » [PARALLAX INC](#) » PARALLAX INC 40012 Ag9050 Power over Ethernet Module Instruction Manual 

Contents

- [1 PARALLAX INC 40012 Ag9050 Power over Ethernet Module](#)
- [2 Features](#)
- [3 Key Specifications](#)
- [4 Application Ideas](#)
- [5 Additional Items Required](#)
- [6 Assembly Instructions](#)
- [7 Documents / Resources](#)
 - [7.1 References](#)
- [8 Related Posts](#)

PARALLAX

PARALLAX INC 40012 Ag9050 Power over Ethernet Module



The Ag9050 Power over Ethernet Module is designed to be a drop-in Power over Ethernet (PoE) solution for the WIZnet W5200 Ethernet Board. As long as your network supports power over Ethernet the W5200 + QuickStart board can both be powered and communicate.

Features

- Power over Ethernet for your WIZnet W5200 Board and P8X32A Propeller QuickStart Board
- Regulated 5 V output powers your QuickStart Board and other peripherals
- Overload and short-circuit protection
- Industrial operating temperature range

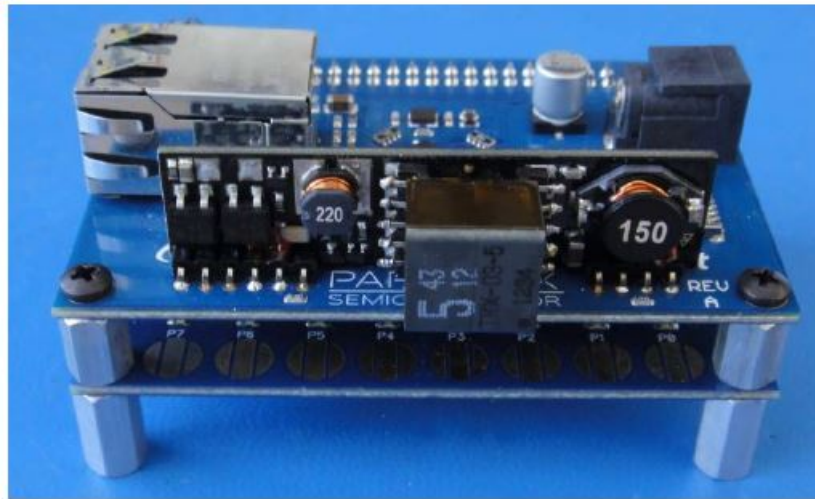
Key Specifications

- Power Requirements: Power Sourcing Equipment (PSE) or Midspan Equipment
- Power Output: 9 watt max power output (5 V @ 1.8 A)
- Communication Interface: Complies with IEEE 802.3af
- Operating temperature: -40 to +185 °F (-40 to +85 °C)
- Dimensions: 3.0 x 2.0 in (7.62 x 5.08 cm)

Application Ideas

- Remote IP based security system
- IP based home automation
- Long distance tethered robotics

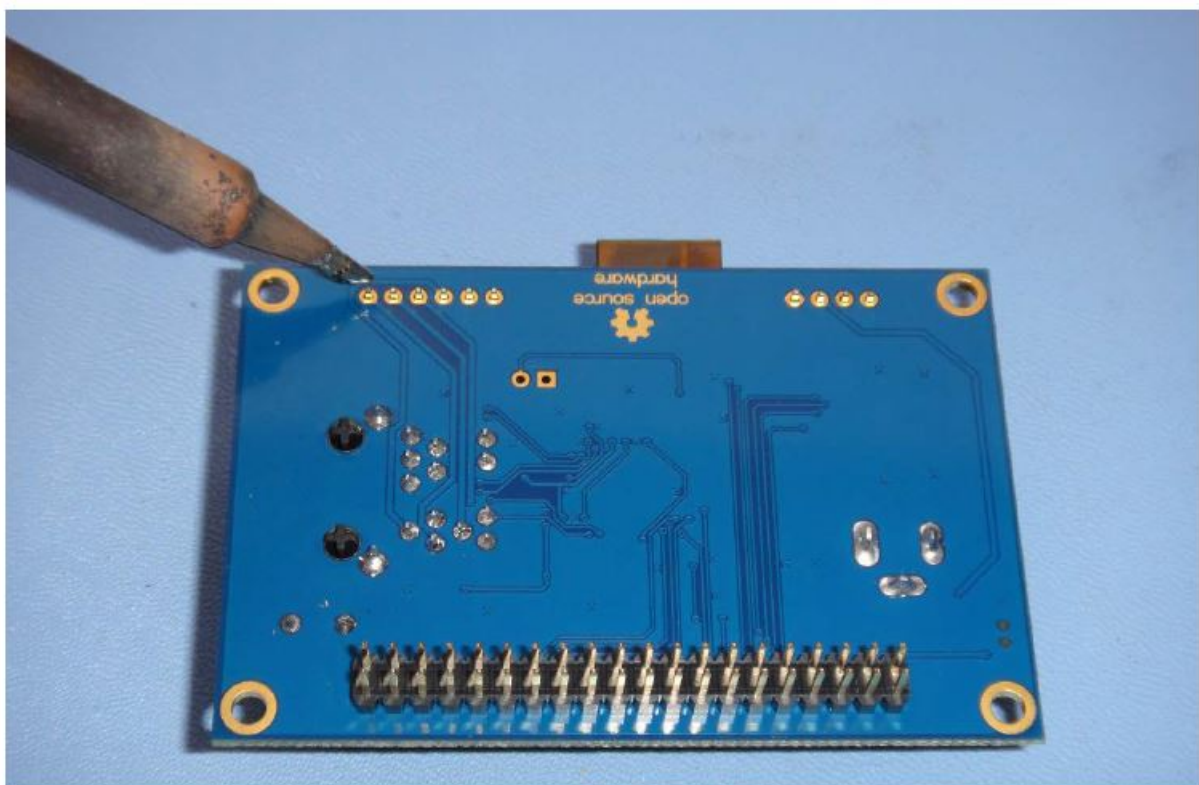
Additional Items Required



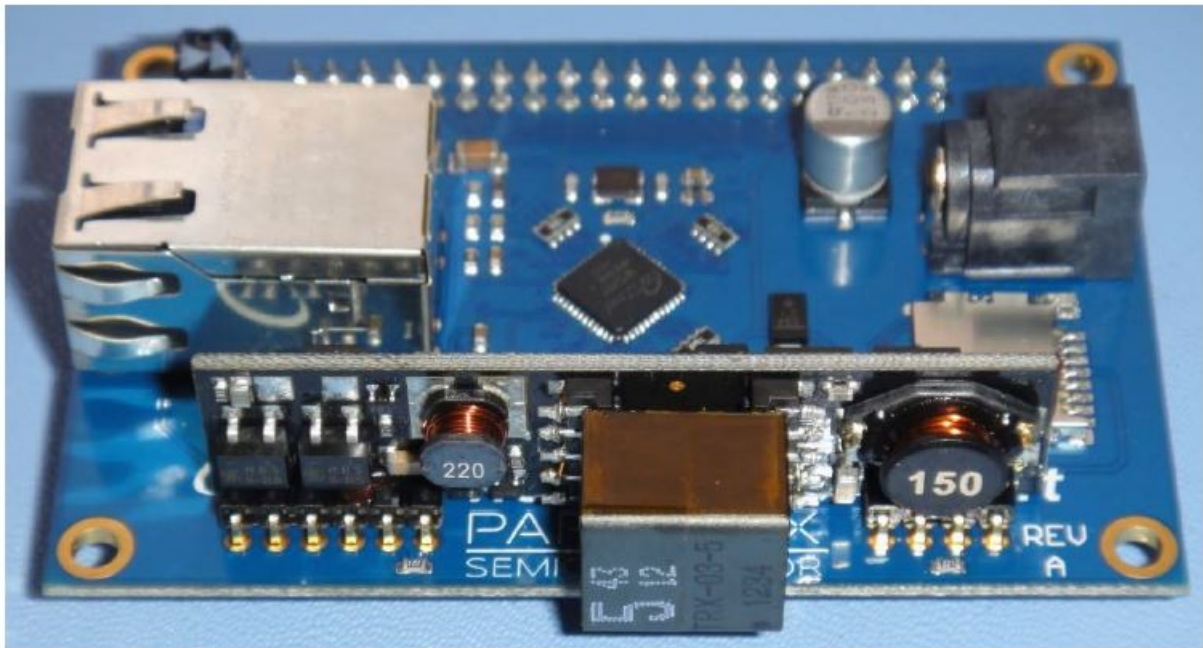
- Power Sourcing Equipment (PSE) or Midspan Equipment
- WIZnet W5200 Board (#40002)
- P8X32A Propeller QuickStart (#40000)
- Soldering iron
- Solder
- Safety glasses

Assembly Instructions

1. Make sure your QuickStart + W5200 boards have been safely powered down and carefully separated. Set the QuickStart board aside.
2. Carefully insert the Ag9050 Power over Ethernet module from the top down so that the module's large transformer is facing outward. The module is pin-keyed, so you cannot insert the module backwards.
3. Use your soldering iron to solder the Ag9050 module into place from the underside of the W5200 module. Apply solder to all of the module's pins. Make sure there are no accidental solder bridges.



4. Check that your board setup looks like this when you're done soldering.



5. Reattach your QuickStart Board and any other peripherals you may have added.
6. Connect an Ethernet cable to the W5200. The Ag9050 PoE module should automatically negotiate with Power Sourcing Equipment and begin supplying power to the QuickStart board.


Resources and Downloads

Check for the latest version of this document and datasheets from the Ag9050 Power over Ethernet Module product page. Go to www.parallax.com and search 40012.

Revision History

Version 1.0 – Original Document

Documents / Resources

	<p>PARALLAX INC 40012 Ag9050 Power over Ethernet Module [pdf] Instruction Manual 40012, Ag9050, Power over Ethernet Module, Ag9050 Power over Ethernet Module, 40012 Ag 9050 Power over Ethernet Module</p>
---	---

References

- [F Parallax Forums](#)
- [P Parallax Inc | Equip Your Genius®](#)